

Southern Utah University

FACILITIES MANAGEMENT

Fiscal Year 2023 | Annual Report



Dear Friends and Colleagues,

The Facilities Management department at SUU continues to play an essential role in supporting the core mission of the university. Our staff members make remarkable contributions and dedicate thousands of hours toward improving students' collegiate experience and preserving more than \$550M of State assets. These dedicated professionals have proven their level of expertise as they work to solve issues quickly and efficiently - often looking for an opportunity to go above and beyond.

The information contained in this report is reflective of the work ethic of the Facilities Management staff. Their response to the needs of the campus is documented in several thousand work orders completed throughout the year. Our leadership team continues to oversee critical infrastructure-related projects that keep deferred maintenance to a minimum. By investing more than \$4M per year in capital improvement projects, Facilities Management keeps campus infrastructure reliable and up to date. Our teams engage heavily in project planning, design, and execution of projects to ensure the interests of SUU and the State of Utah are protected. Without the oversight of our project managers and those who work with them, these projects would be far less successful.

Facilities Management continues to receive strong support from our administration. During this last year, we welcomed Tiger Funk as our new Vice President of Operations and appreciate his deep understanding of Facilities Management. President Mindy Benson, having served on campus for many years in previous roles, has a well-established commitment to keeping the buildings and grounds of SUU in top condition. We are proud to support President Benson as we move forward into what will surely be a remarkable future at SUU. Her vision and that of Facilities Management are aligned; our primary purpose is to foster student success. Beyond that, we continue our commitment to making SUU the best possible place for our employees to work and develop their professional talents - all of which will provide a return to SUU and those who share our campus by creating spaces that are welcoming, accessible, and foster a premier educational experience for our students.

Warm regards,



Assistant Vice President
Facilities Management



Work Orders

2,560 Corrective Maintenance Work Orders

1,470 Preventive Maintenance Work Orders

4,030 Total Work Orders Completed

Energy

Electrical Expense:

\$ 1,684,448

Natural Gas Expense:

\$ 1,010,067

More than \$ 936,612.76 in energy savings since 2007

For more information relating to our Conservation Efforts please visit:

<https://www.suu.edu/ad/facilities/energyconservation.html>

Campus Statistics

98 Maintained Buildings

1,904,002 square feet

157 Maintained Acres on Main Campus

1,032 Acres of Valley Farm Property;

2,629 Acres of Mountain Property;

69 Acres of Artificial Turf and Xeriscape

Employee Stats

Student Employees:



Average: 260

(Varies based on season)

165,411 Student Employee hours dedicated to campus

77 Full Time Employees

161,758 Full Time Employee hours dedicated to campus

Grounds

Over **2,600** Trees on Campus

130 trees planted in Fiscal Year 23

1,413 total net increase since 2010

12,266 square feet of Flower Beds and **213** seasonal pots maintained

Service Connection

Facilities Management provides a monitored phone number 24/7/365 for reporting campus maintenance issues **435.865.8888**

Capital Improvement Funding

\$4.7M Appropriated from the Utah State Legislature

10 Projects - Including: Roofing, Asphalt, ADA Enhancements, Chillers, Security Systems, Energy Upgrades, Utility Systems Upgrades.



Pathway to the Clock Tower

Mission

We honor our commitment to student success by providing an exceptional learning environment and opportunities which promote excellence at SUU.

Vision

We will improve the campus experience for all that join us at SUU by delivering exceptional facilities that are welcoming, accessible, and create a lasting impression. Facilities Management staff are engaged with the campus community in a professional and honorable manner, perform at the pinnacle of their abilities, and mentor students for future success.

Core Values

Honor, Mentorship, Culture, Professionalism.

Upcoming Capital Development Projects

Design is underway for the modern and innovative 44,000 square foot Music Center which will be located on the corner of University Boulevard and 300 West. Expected completion is 2025. The Business Building West design, which will connect to our existing Business Building is also in progress.

Tree Campus, USA

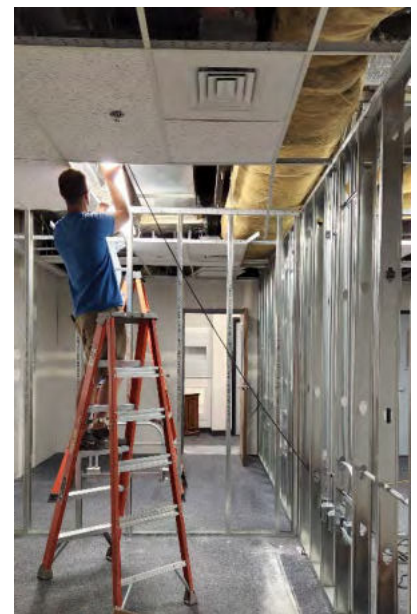


Lower Campus

Received the Tree Campus USA designation from the Arbor Day Foundation for the last seven years, recognizing effective urban forest management with more than 2,550 trees on campus. Only 7% of campuses nationally receive this designation.

Student Success

Facilities Management continues a longstanding commitment to student success by providing opportunities for students to learn. Facilities Management hires more than 260 student staff and interns to assist full-time staff. In these positions, student employees learn organizational skills, leadership traits, and gain technical expertise, which is applied to their degree programs and professional career choices.



Electronic Learning Center

FACILITIES MANAGEMENT LEADERSHIP TEAM

- Ben Johnson, Assistant Vice President for Facilities Management
- Sharrisa Turnbaugh, Administrative Assistant
- Jelisa Robison, Director of Business Operations
- Ralph Savage, Senior Managing Director of Facilities Management
- Shad Beckstrand, Director of Construction Services, Space Planning & Maintenance
- Barry Pearson, Director of Grounds and Gardens
- Quinn Mathews, Director of Utility Services, Campus Fire Marshal

The Eccles Coliseum and Stadium

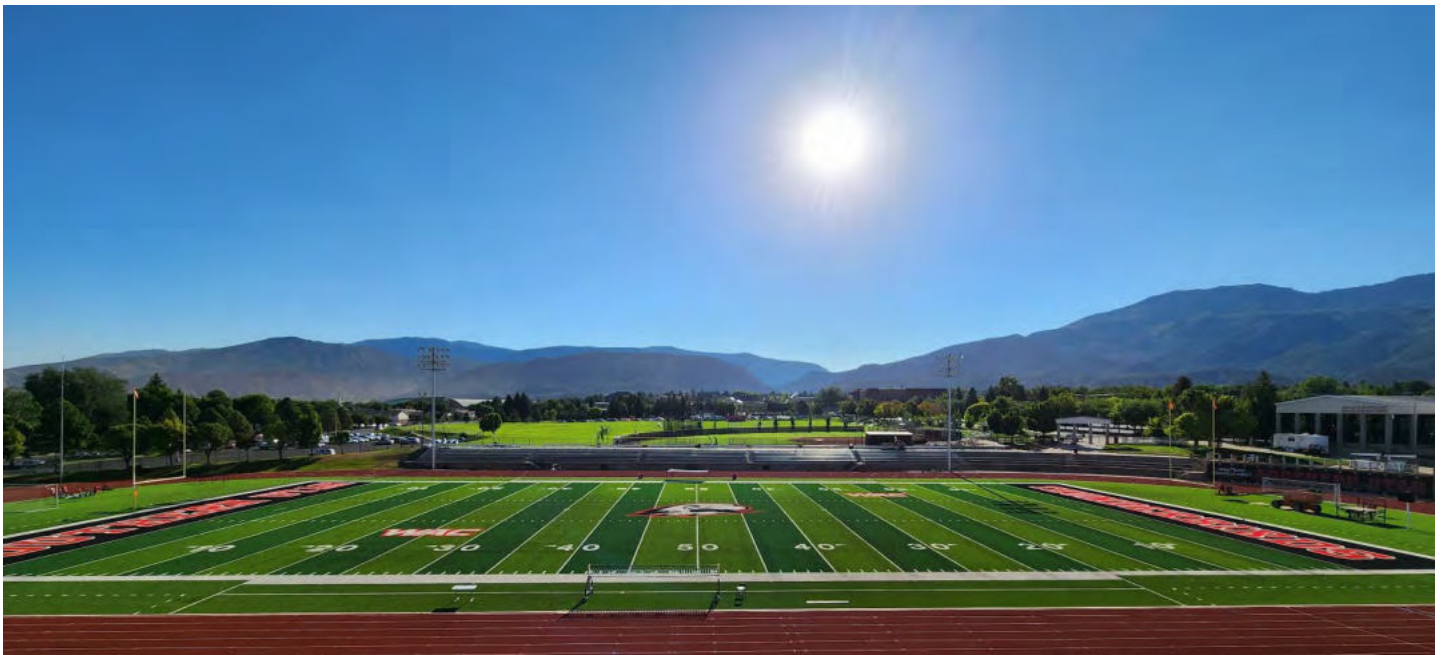


Photo Credit: Maquelle Johnson