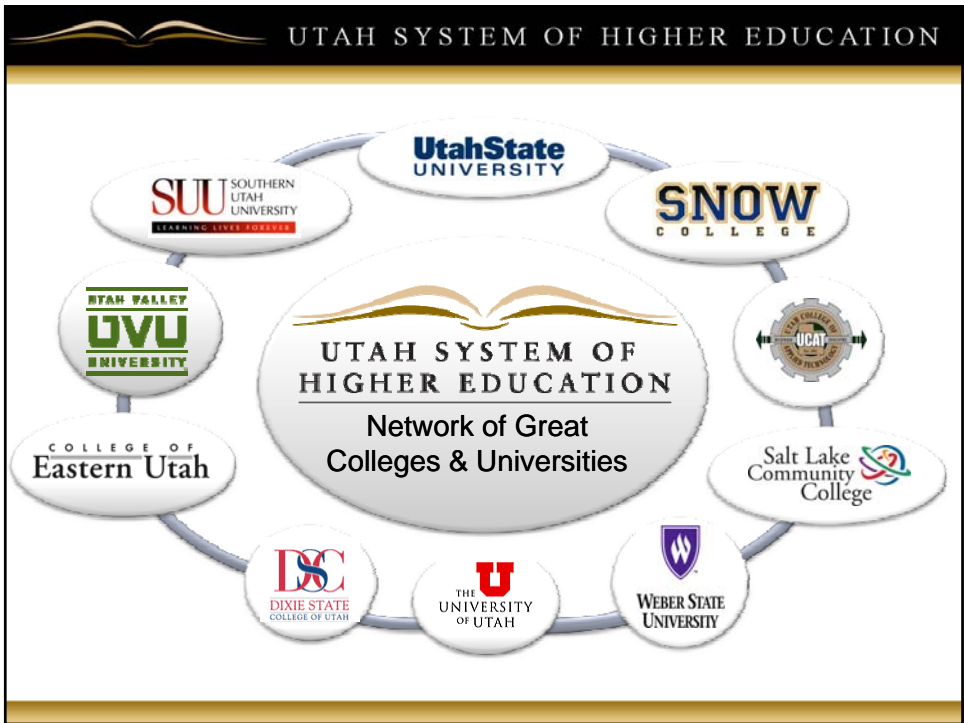


**Higher Education Appropriations Subcommittee**  
*William A. Sederburg, Commissioner of Higher Education*




**Higher Education Appropriations Subcommittee**  
*William A. Sederburg, Commissioner of Higher Education*

UTAH SYSTEM OF HIGHER EDUCATION

## A Vibrant Network of Institutions

- 10 Institutions
- 29,596 Employees (Fall 2007)
- 152,228 Students (94,149 FTE, as of Fall 2008)
  - Increase of 11,896 students since Fall 2007
- 25,415 certificates & degrees (2006-07)
- \$400-\$500 million/year to hubs for research and development
- Proportion of state-to-private funding for Buildings: \$590 million : \$1.1 billion
- 24,000 students received grant and scholarship aid through state-administered programs in 2008.



4

UTAH SYSTEM OF HIGHER EDUCATION

## Appreciate Support of this Subcommittee

- **2008 Special Session**
  - Protection from deeper budget cuts
  - flexibility on implementation




5

**Higher Education Appropriations Subcommittee**  
*William A. Sederburg, Commissioner of Higher Education*


UTAH SYSTEM OF HIGHER EDUCATION

## Three Parts


1. Summary of Dennis Jones' Presentation
  - Presented at Business Roundtable Discussion
  - Making report to Board of Regents
  - Available to committee
  - Full report on [utahsbr.edu](http://utahsbr.edu)
2. Comment on Budget Reductions
3. Report from the Campuses



Choosing Priorities for Ensuring  
the Future of Utah  
*Dr. Dennis Jones*



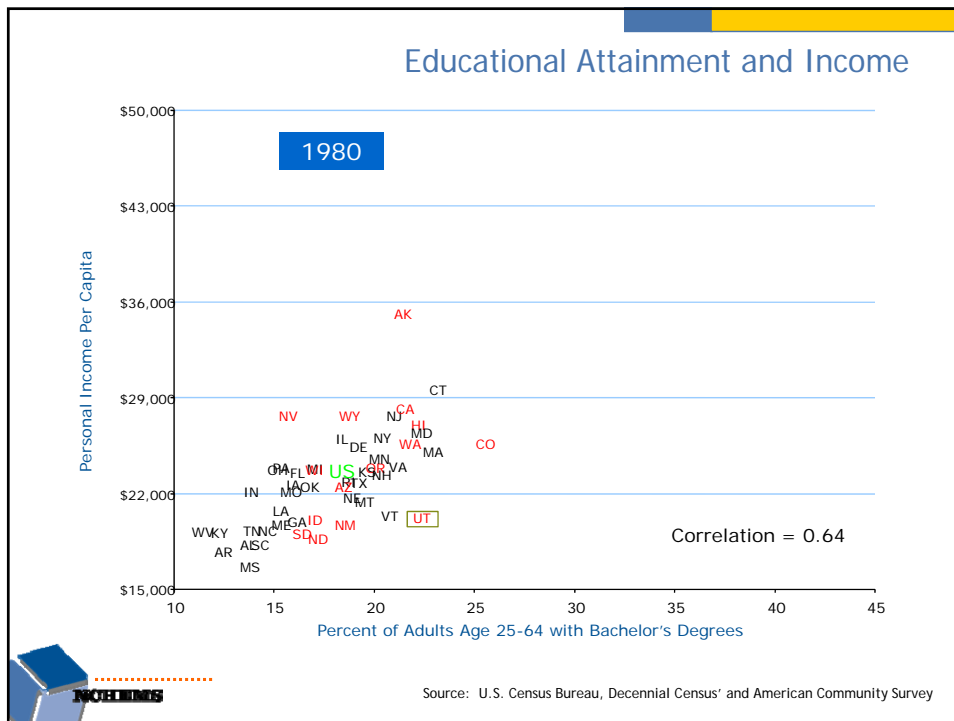
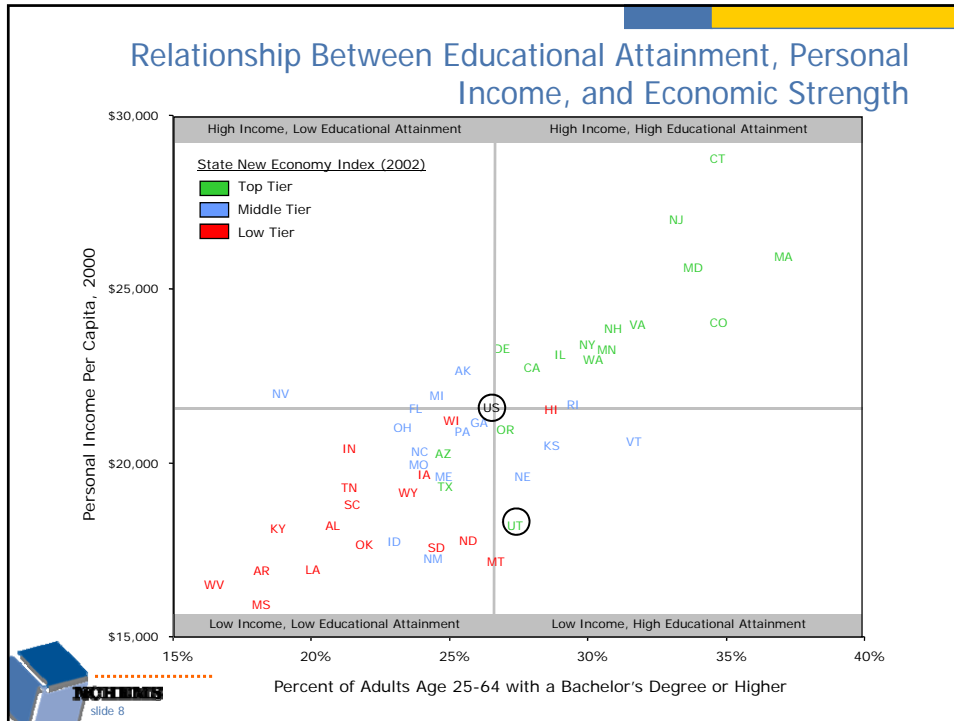
December 11, 2008  
Salt Lake City, Utah



**NCEMS**  
National Center for Higher Education Management Systems  
3035 Center Green Drive, Suite 150  
Boulder, Colorado 80301

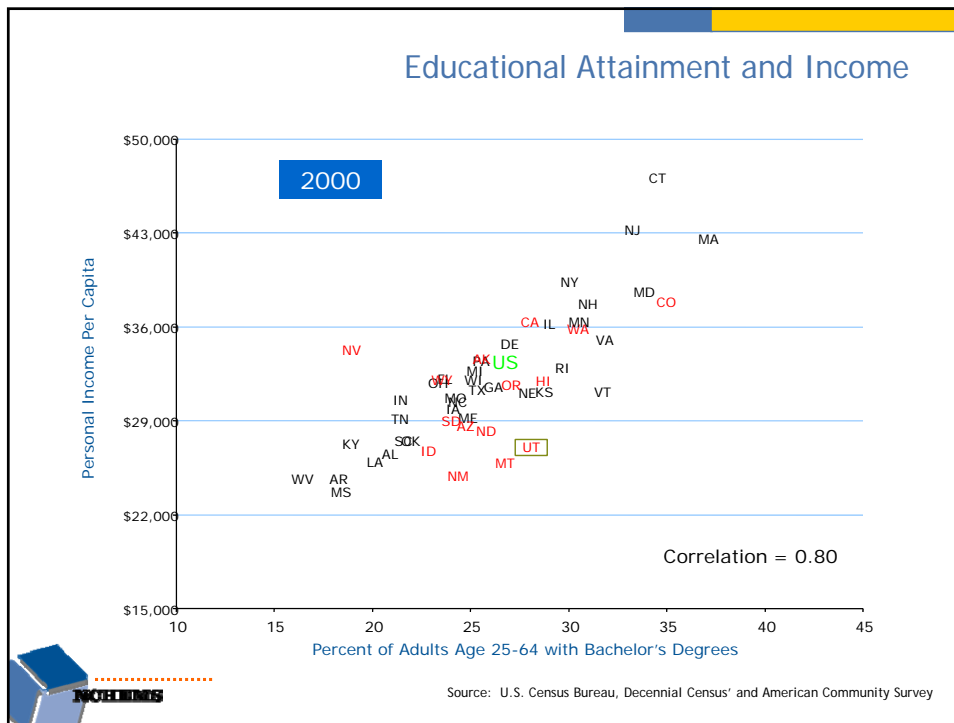
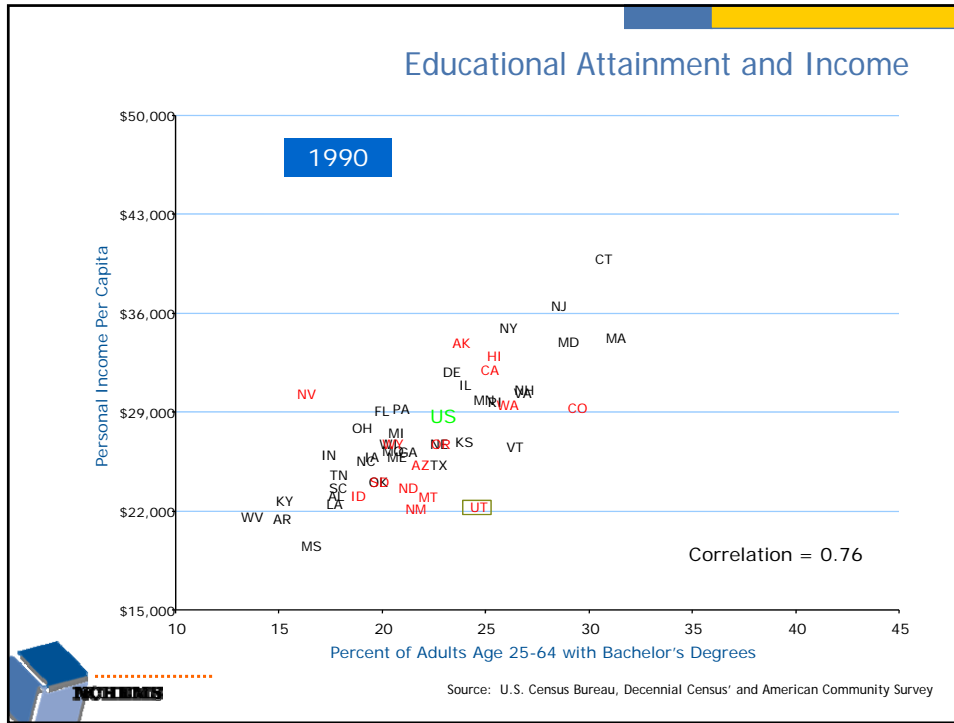
# Higher Education Appropriations Subcommittee

William A. Sederburg, Commissioner of Higher Education



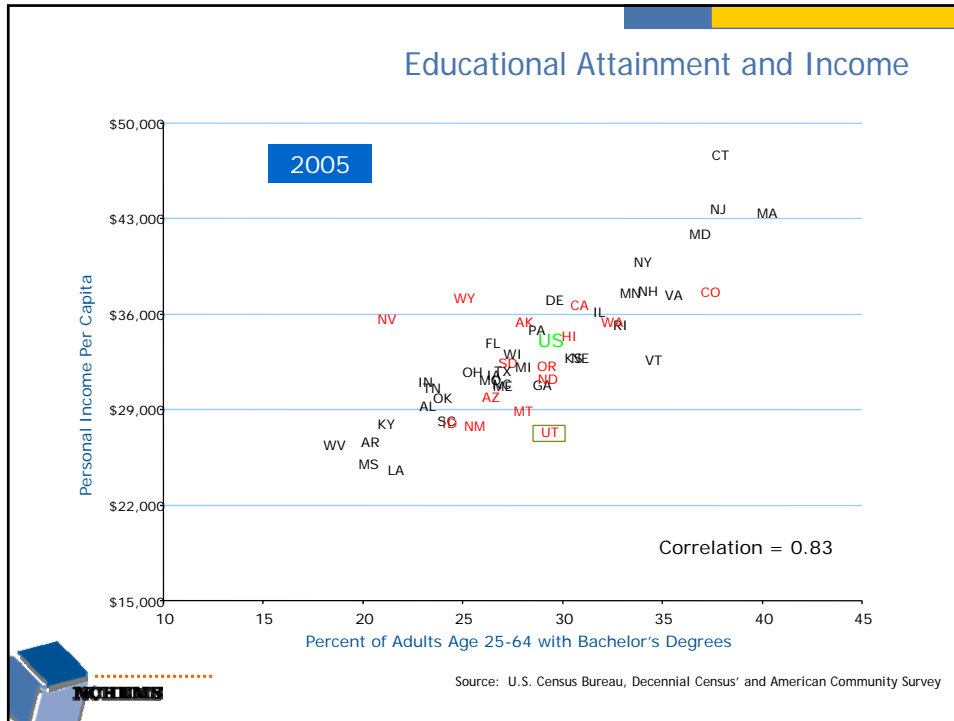
# Higher Education Appropriations Subcommittee

William A. Sederburg, Commissioner of Higher Education



# Higher Education Appropriations Subcommittee

William A. Sederburg, Commissioner of Higher Education

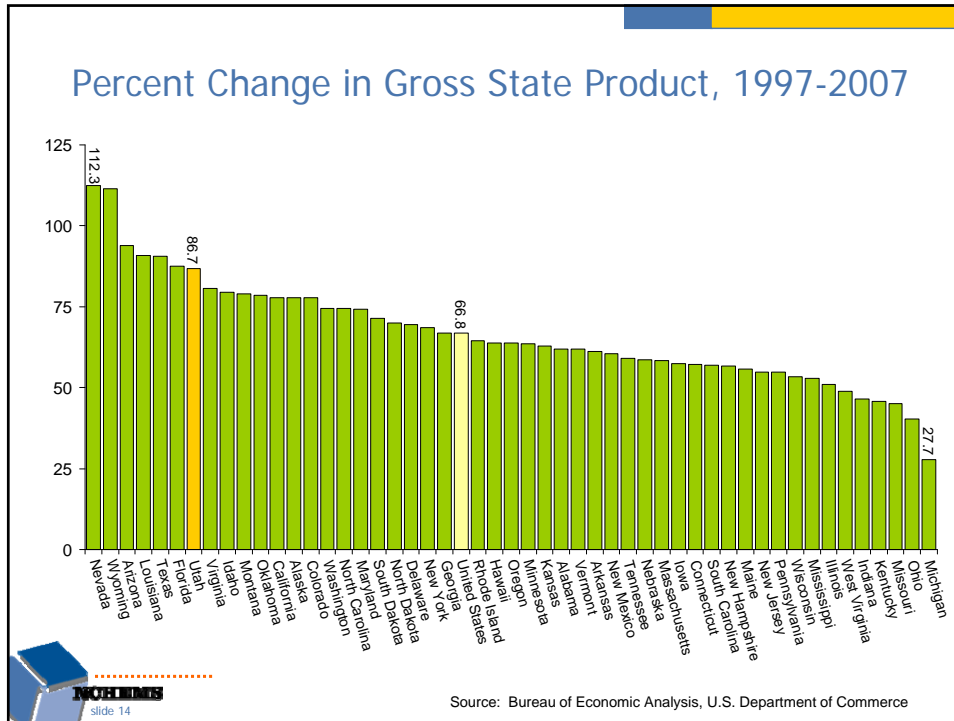


## UTAH'S STRENGTHS

slide 13

# Higher Education Appropriations Subcommittee

William A. Sederburg, Commissioner of Higher Education



### Utah Rankings on Key New Economy Scales

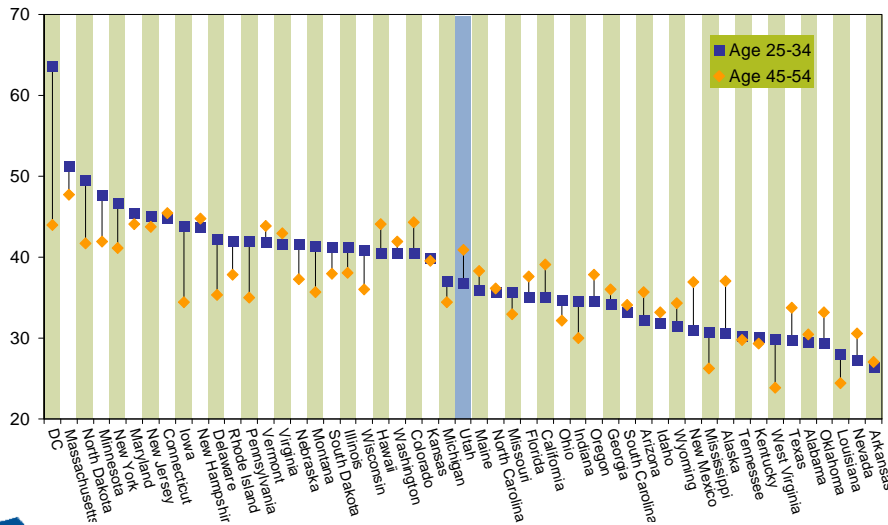
Overall Ranking	12
IT Professionals	19
Workforce Education	15
“Gazelle” Jobs	17
Fastest Growing Firms	4
Entrepreneurial Activity	17
Inventor Patents	2
High Tech Jobs	10
Scientists & Engineers	20
Patents	19
Industry Investment in R&D	28
Venture Capital	5
Technology in Schools	50

Source: The 2007 State New Economy Index

## SOME PROBLEMS CONFRONTING UTAH



Differences in College Attainment (Associate & Higher)  
 Between Younger & Older Adults - U.S., 2006

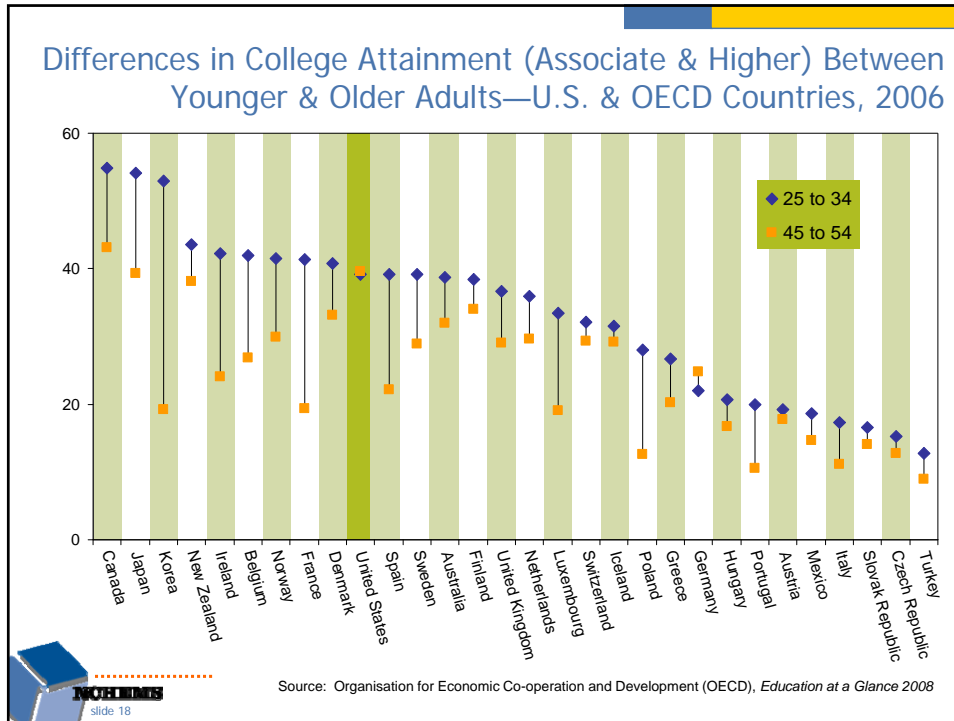


Source: U.S. Census Bureau, 2006 American Community Survey (ACS)



# Higher Education Appropriations Subcommittee

William A. Sederburg, Commissioner of Higher Education

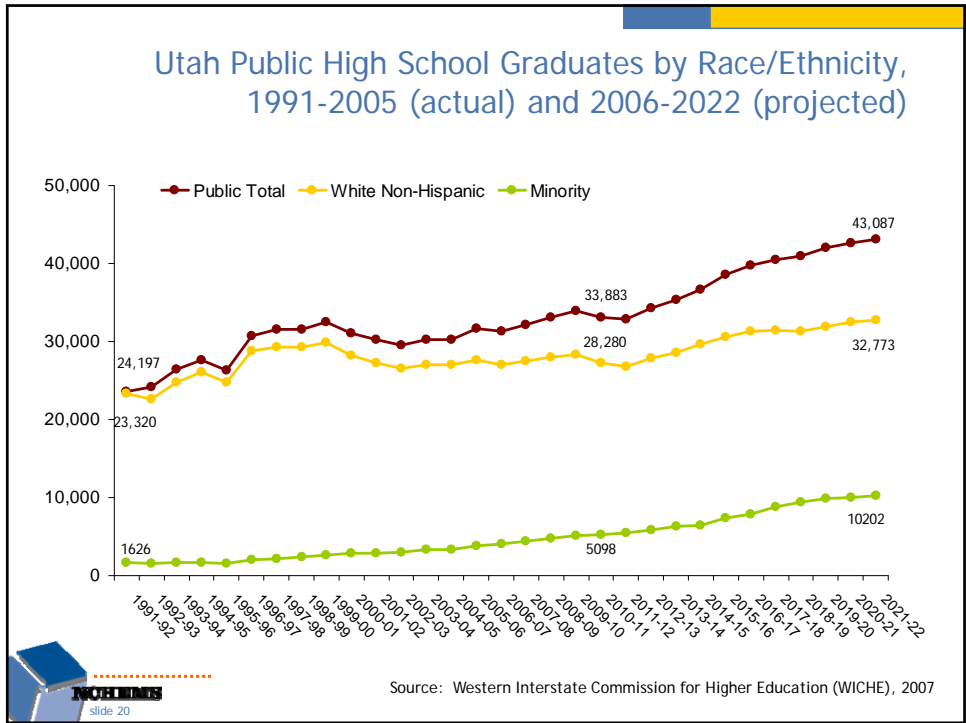


DEALING WITH A MORE DIVERSE POPULATION

NOELIMS slide 19

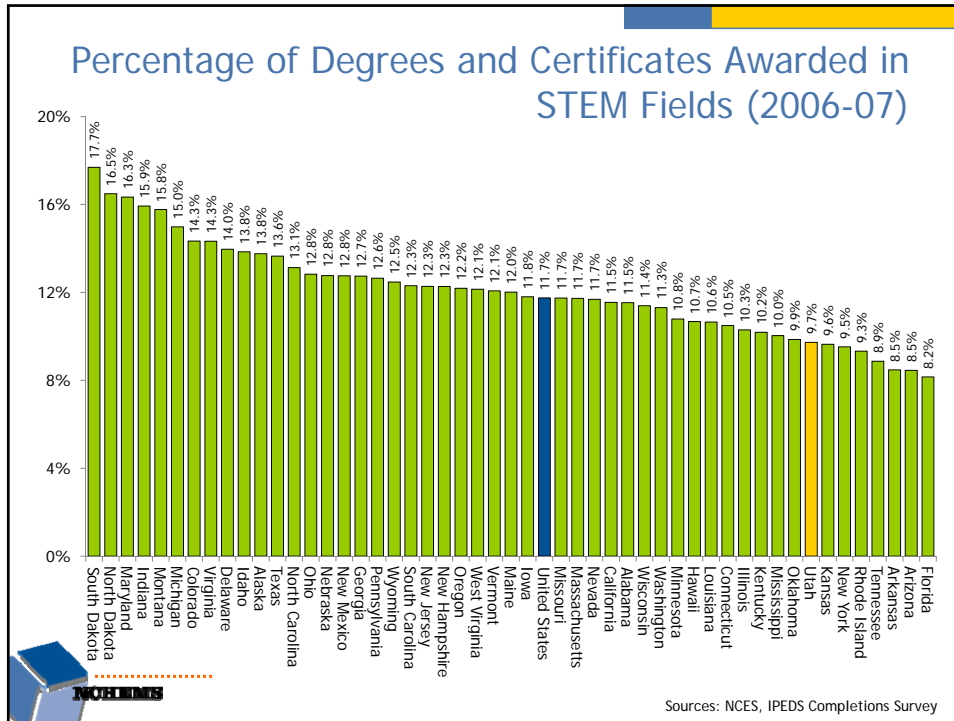
# Higher Education Appropriations Subcommittee

William A. Sederburg, Commissioner of Higher Education



**CREATING A SUFFICIENT NUMBER OF HIGH WAGE JOBS TO EFFECTIVELY UTILIZE THE SKILLS OF THE POPULATION**

**Higher Education Appropriations Subcommittee**  
*William A. Sederburg, Commissioner of Higher Education*



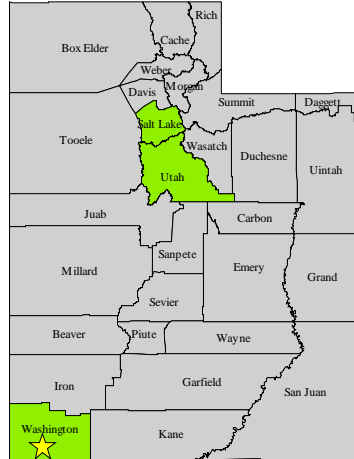
## ENSURING THE SUCCESS OF ALL REGIONS OF UTAH

slide 23

# Higher Education Appropriations Subcommittee

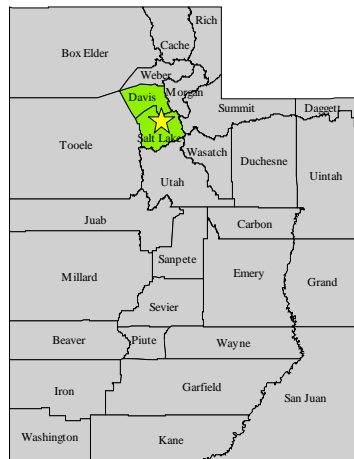
William A. Sederburg, Commissioner of Higher Education

## Counties from Which Dixie State College Receives 80% of its First-time Freshman Enrollments, Fall 2008



Source: Utah System of Higher Education

## Counties from Which University of Utah Receives 80% of its First-time Freshman Enrollments, Fall 2008

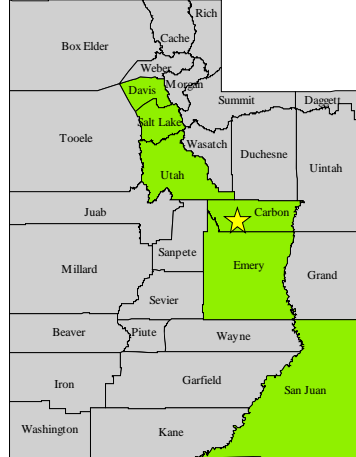


Source: Utah System of Higher Education

# Higher Education Appropriations Subcommittee

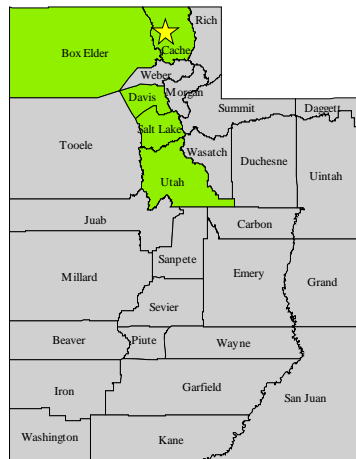
William A. Sederburg, Commissioner of Higher Education

## Counties from Which College of Eastern Utah Receives 80% of its First-time Freshman Enrollments, Fall 2008



Source: Utah System of Higher Education

## Counties from Which Utah State University Receives 80% of its First-time Freshman Enrollments, Fall 2008

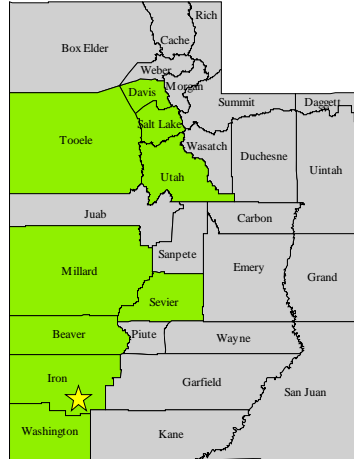


Source: Utah System of Higher Education

# Higher Education Appropriations Subcommittee

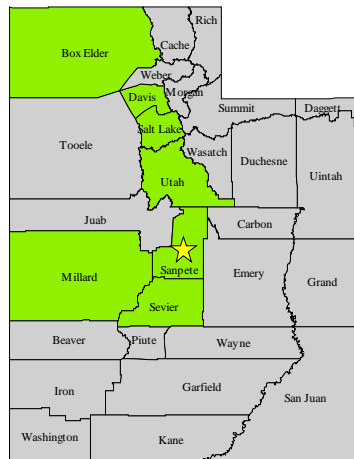
William A. Sederburg, Commissioner of Higher Education

## Counties from Which Southern Utah University Receives 80% of its First-time Freshman Enrollments, Fall 2008



Source: Utah System of Higher Education

## Counties from Which Snow College Receives 80% of its First-time Freshman Enrollments, Fall 2008

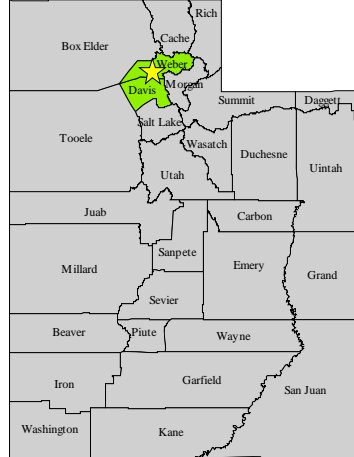


Source: Utah System of Higher Education

# Higher Education Appropriations Subcommittee

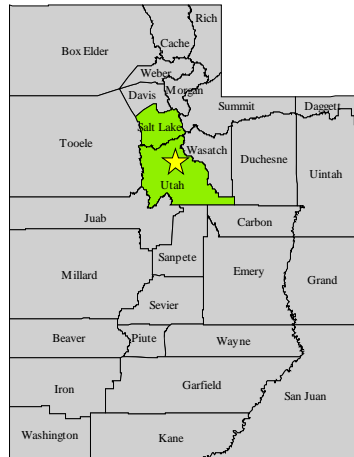
William A. Sederburg, Commissioner of Higher Education

## Counties from Which Weber State University Receives 80% of its First-time Freshman Enrollments, Fall 2008



Source: Utah System of Higher Education

## Counties from Which Utah Valley University Receives 80% of its First-time Freshman Enrollments, Fall 2008

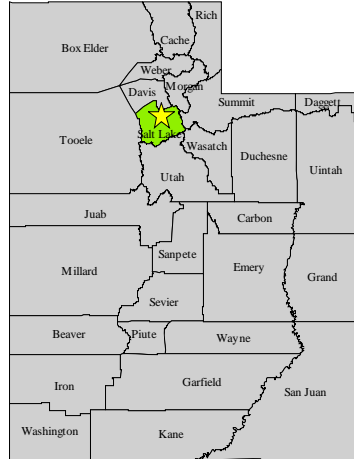


Source: Utah System of Higher Education

# Higher Education Appropriations Subcommittee

*William A. Sederburg, Commissioner of Higher Education*

Counties from Which Salt Lake Community College Receives 80% of its First-time Freshman Enrollments, Fall 2008



Source: Utah System of Higher Education

## MOVING FROM GOOD TO GREAT IN EDUCATION



# Higher Education Appropriations Subcommittee

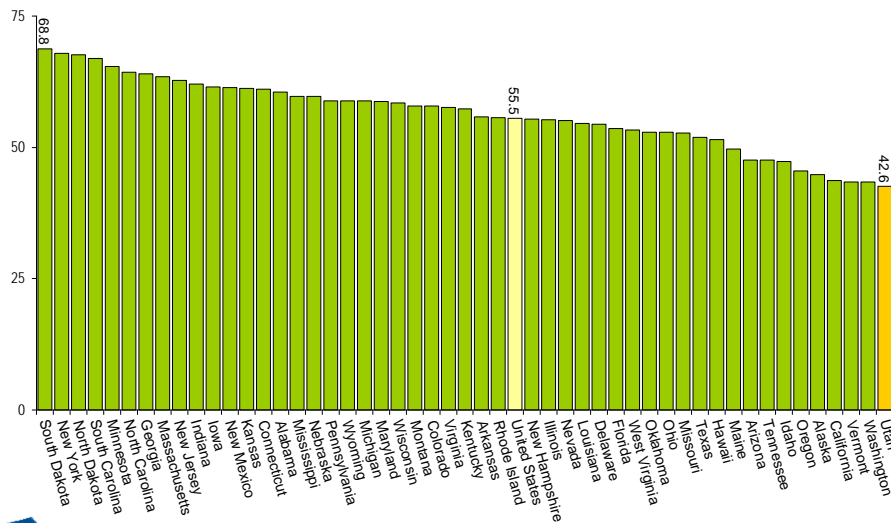
William A. Sederburg, Commissioner of Higher Education

## Utah Report Card, Measuring Up 2008

Performance Category	2008 Grade	Change Over Time
Preparation	B	↓
Participation	B-	↓
Affordability	F	↓
Completion	B+	↑
Benefits	B	↑
Learning	I	



## College-Going Rates—First-Time Freshmen Directly Out of High School as a Percent of Recent High School Graduates, 2004



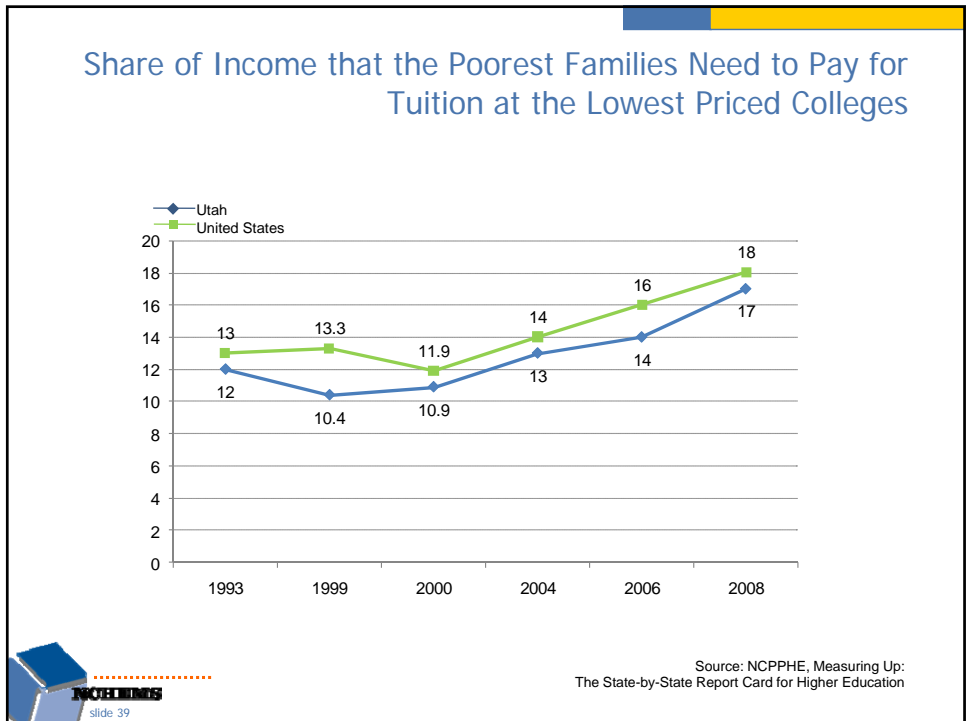
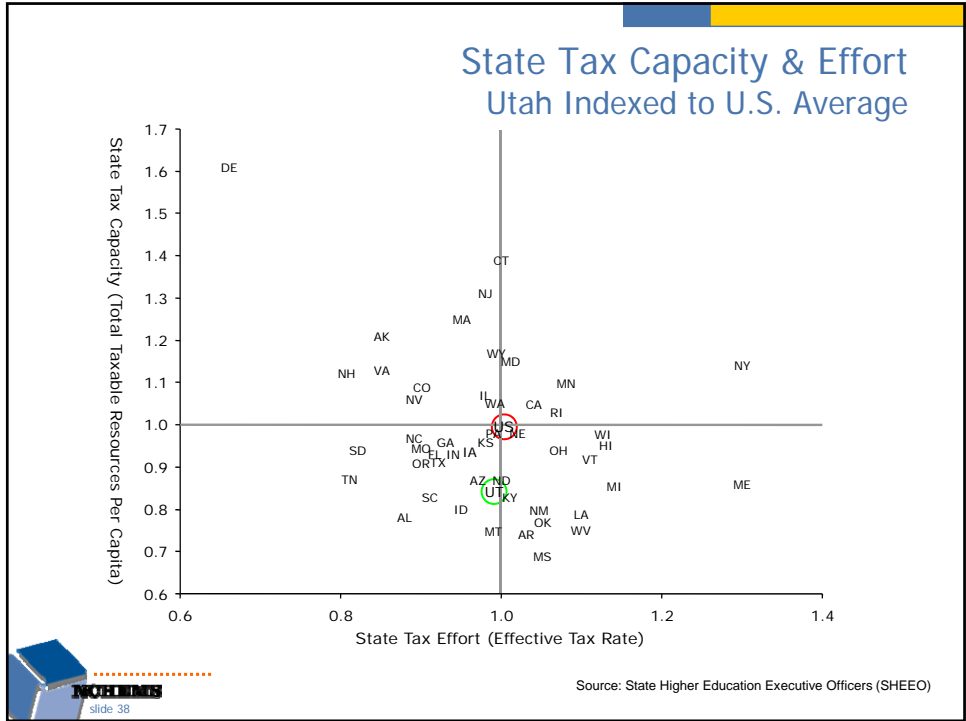
Source: Tom Mortenson, Postsecondary Opportunity (2004 data update 02-06-07)





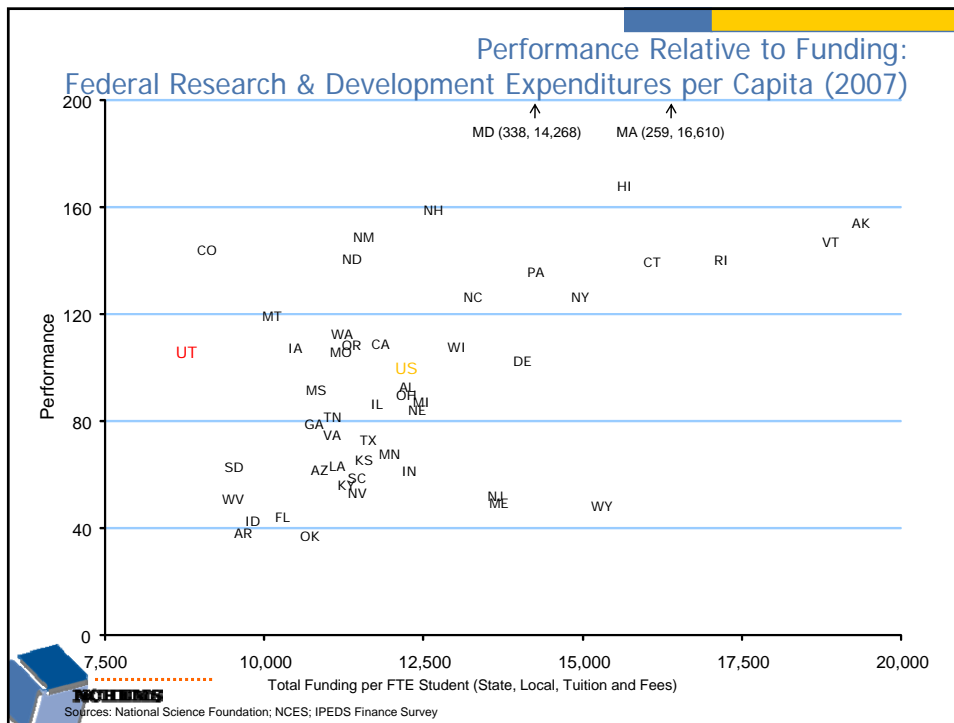
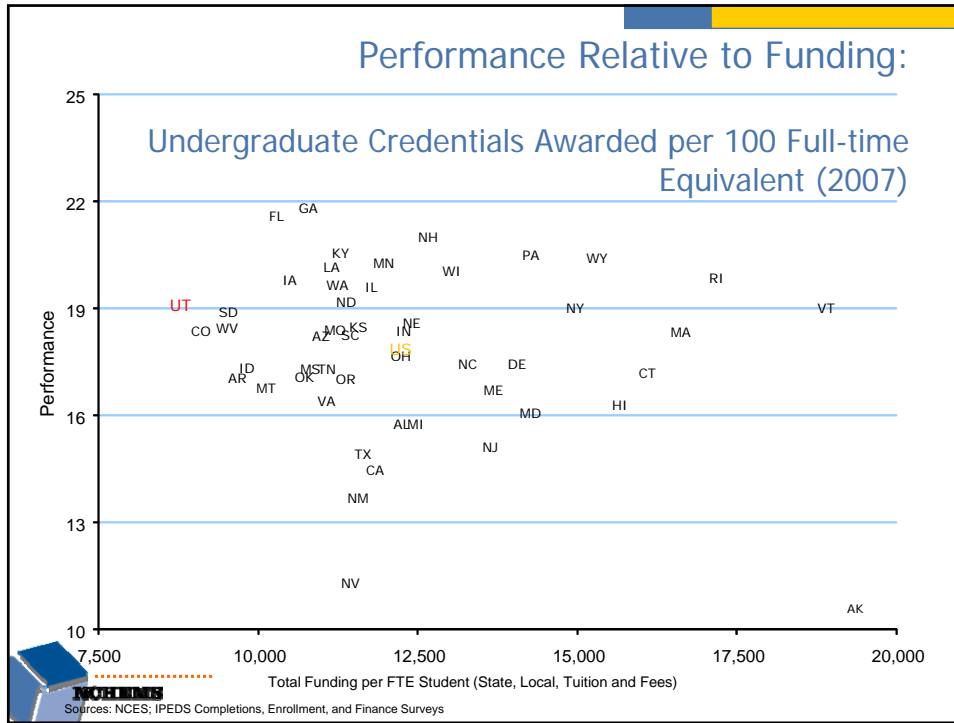
# Higher Education Appropriations Subcommittee

William A. Sederburg, Commissioner of Higher Education

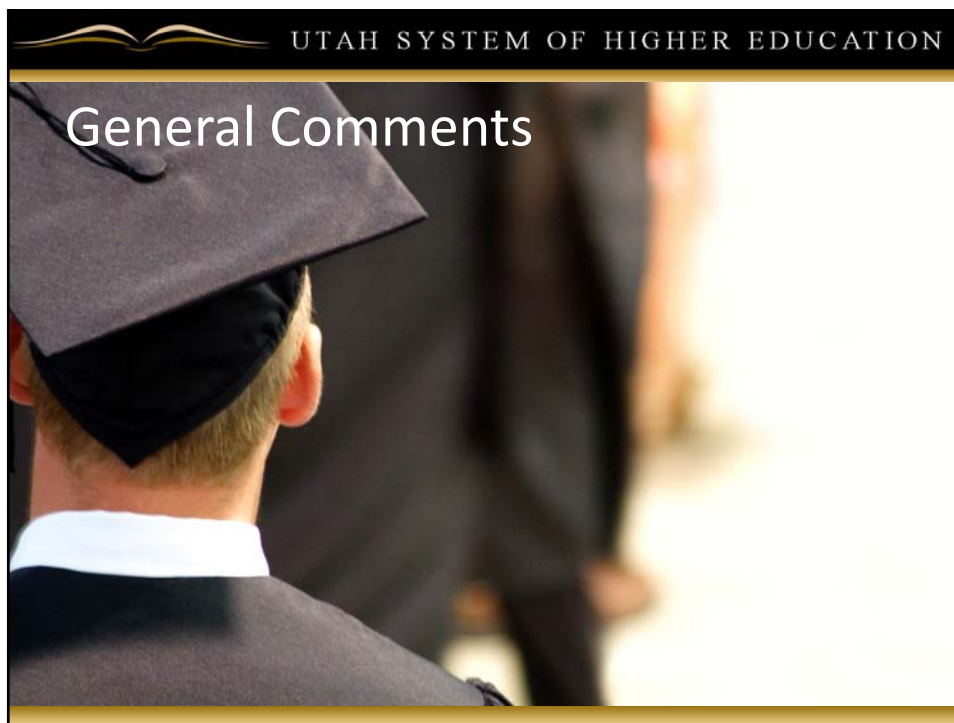
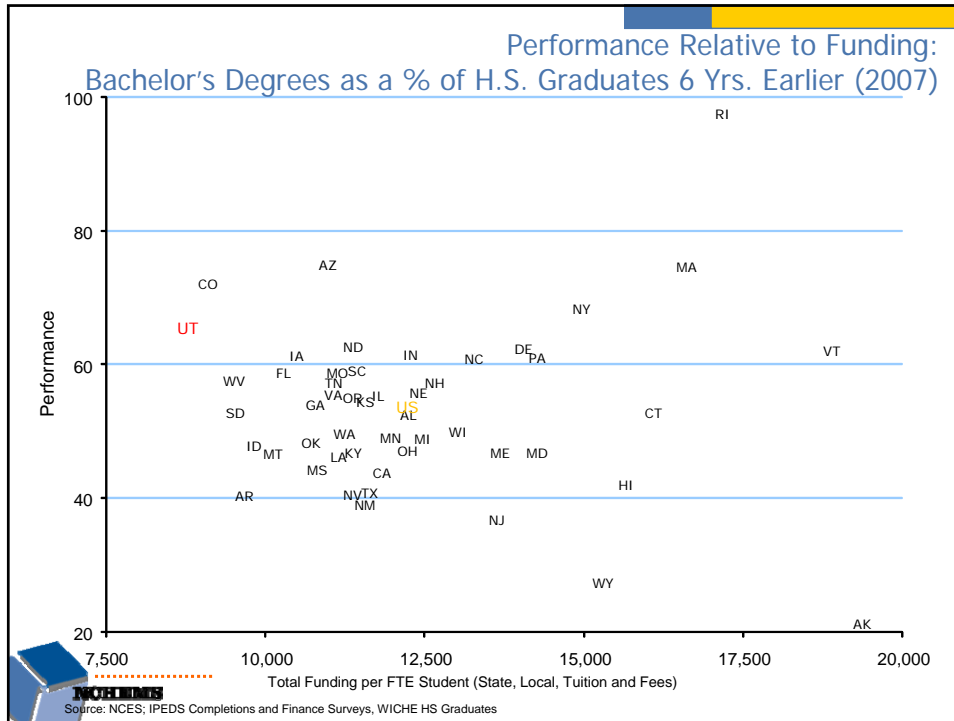


# Higher Education Appropriations Subcommittee

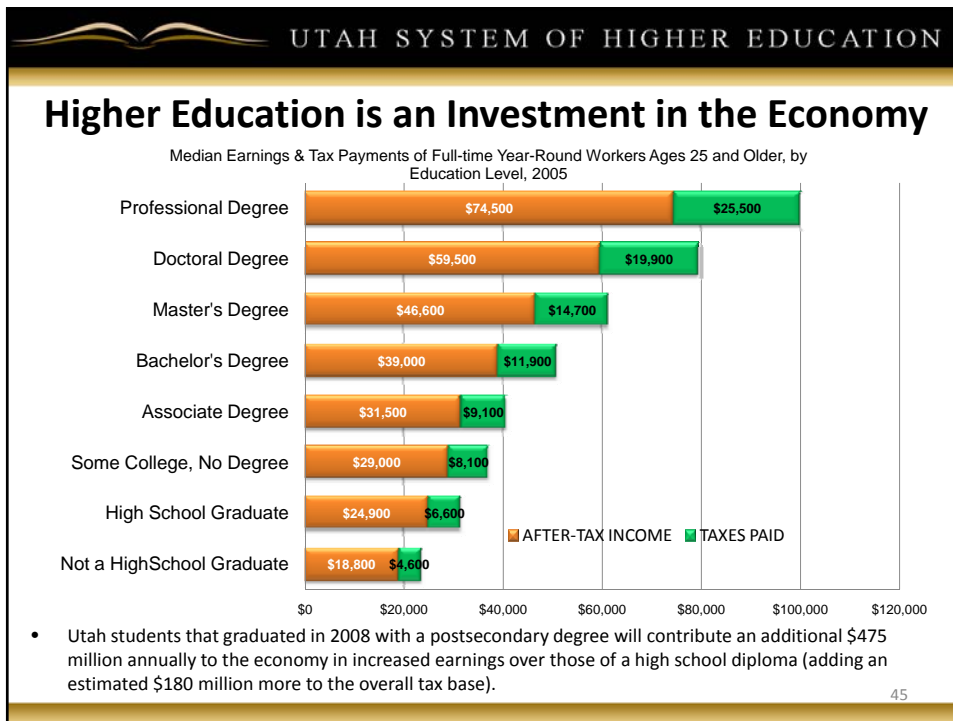
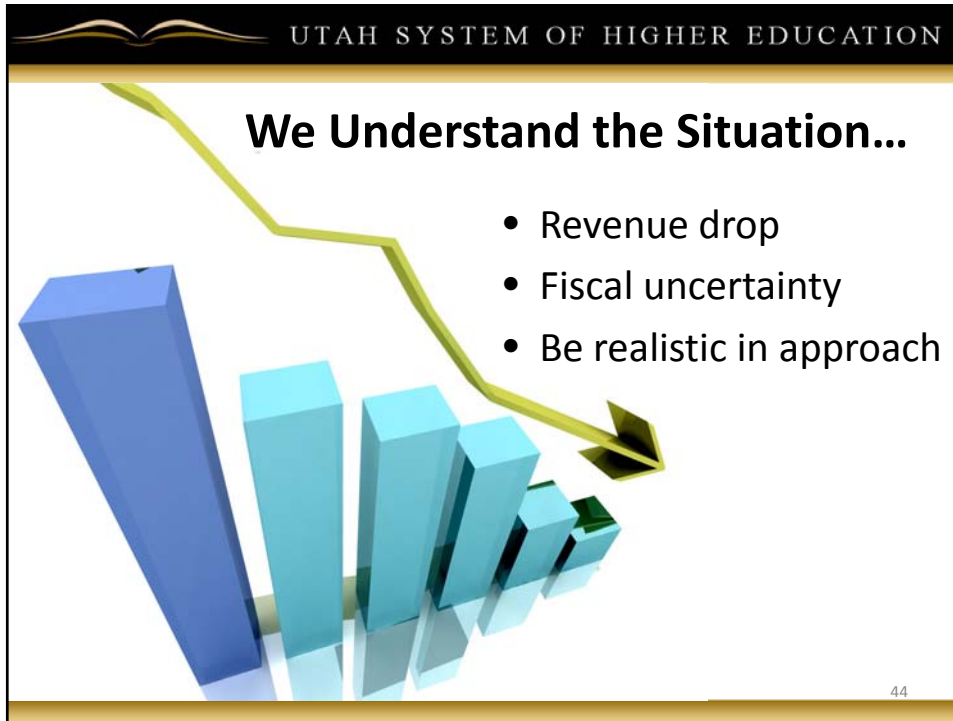
William A. Sederburg, Commissioner of Higher Education



**Higher Education Appropriations Subcommittee**  
*William A. Sederburg, Commissioner of Higher Education*



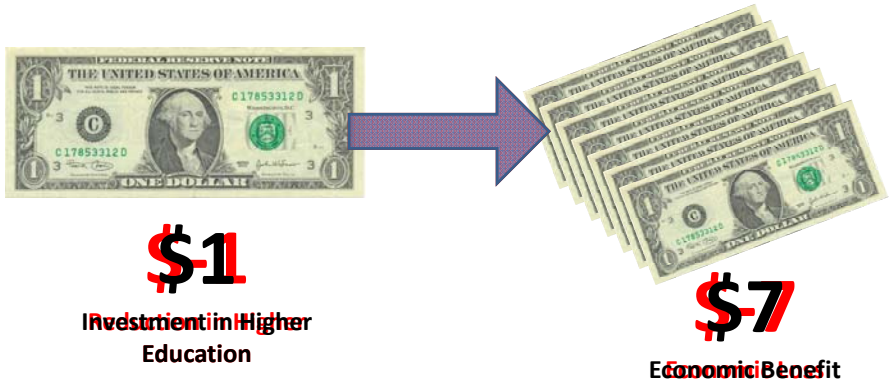
**Higher Education Appropriations Subcommittee**  
*William A. Sederburg, Commissioner of Higher Education*



**Higher Education Appropriations Subcommittee**  
*William A. Sederburg, Commissioner of Higher Education*

UTAH SYSTEM OF HIGHER EDUCATION

### The Multiplier Effect of Higher Education on the Economy



**\$1**  
Investment in Higher Education

**\$7**  
Economic Benefit

46

UTAH SYSTEM OF HIGHER EDUCATION

### Legislature has Recognized Higher Education's Role in Economic Growth

- USTAR
- Teacher Initiative
- Engineering Initiative
- Jobs Now






47

**Higher Education Appropriations Subcommittee**  
*William A. Sederburg, Commissioner of Higher Education*

UTAH SYSTEM OF HIGHER EDUCATION

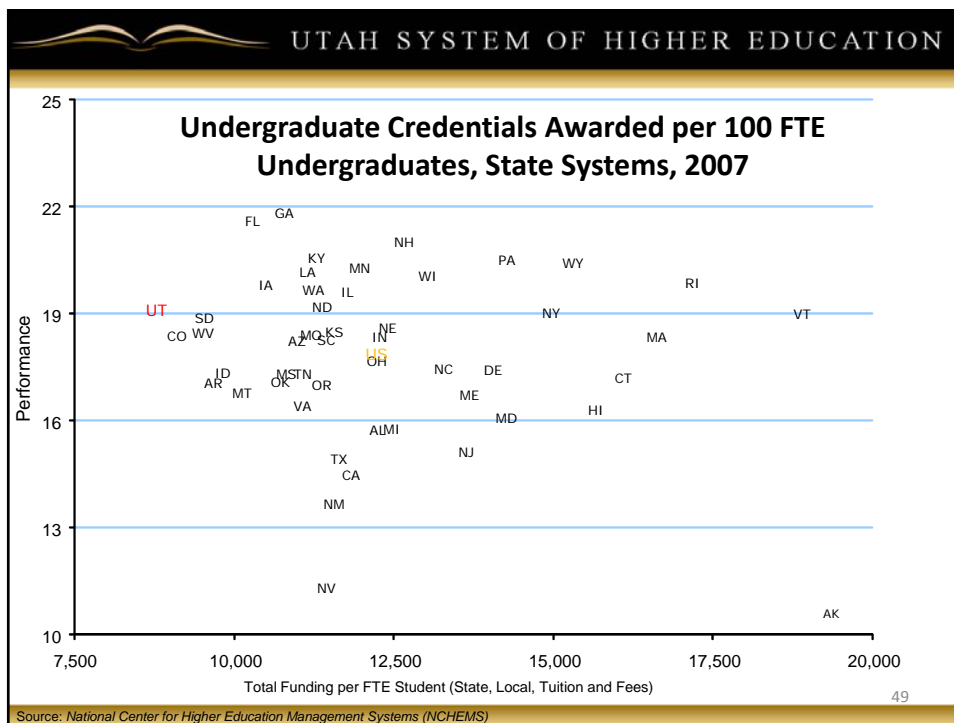
## Most Efficient State

- National study<sup>1</sup> says Utah graduates more students per dollar spent than any other state
- Among the top-ten in granting undergraduate credentials per FTE student.
- Resident Undergraduate tuition is 81% of WICHE State average.<sup>2</sup>

<sup>1</sup>National Center for Higher Education Management Systems (NCHEMS)  
<sup>2</sup>Western Interstate Compact for Higher Education (WICHE) states include AK, HI, WA, OR, CA, ID, NV, AZ, NM, UT, CO, WY, MT, ND, SD.

48



**Higher Education Appropriations Subcommittee**  
*William A. Sederburg, Commissioner of Higher Education*

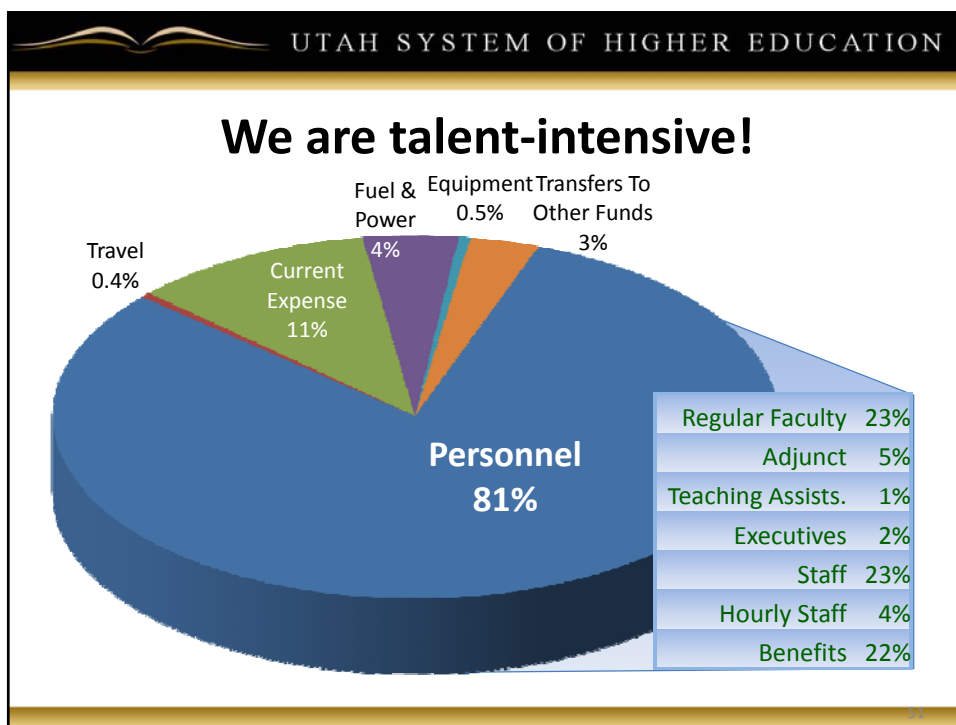
UTAH SYSTEM OF HIGHER EDUCATION

## The Squeeze on Higher Education

More Students

Budget Cuts

50



**Higher Education Appropriations Subcommittee**  
*William A. Sederburg, Commissioner of Higher Education*

UTAH SYSTEM OF HIGHER EDUCATION

## Principles & Approach to Cuts

1. Protect students.
2. Protect program quality.
3. Meet the economic needs of our state.
4. Be constructive participants in helping state policymakers meet fiscal challenges.
5. Be transparent in how cuts are made.




52

UTAH SYSTEM OF HIGHER EDUCATION

## Presidents' Dilemma

- How to implement a 7.5% budget cut for FY 2009 when:
  - Students are in the classroom
  - Faculty are on the job/contract
  - Any available reserves were used in initial 4% cut
  - Financial aid funds already disbursed to students (e.g. UCOPE)



**Higher Education Appropriations Subcommittee**  
*William A. Sederburg, Commissioner of Higher Education*

