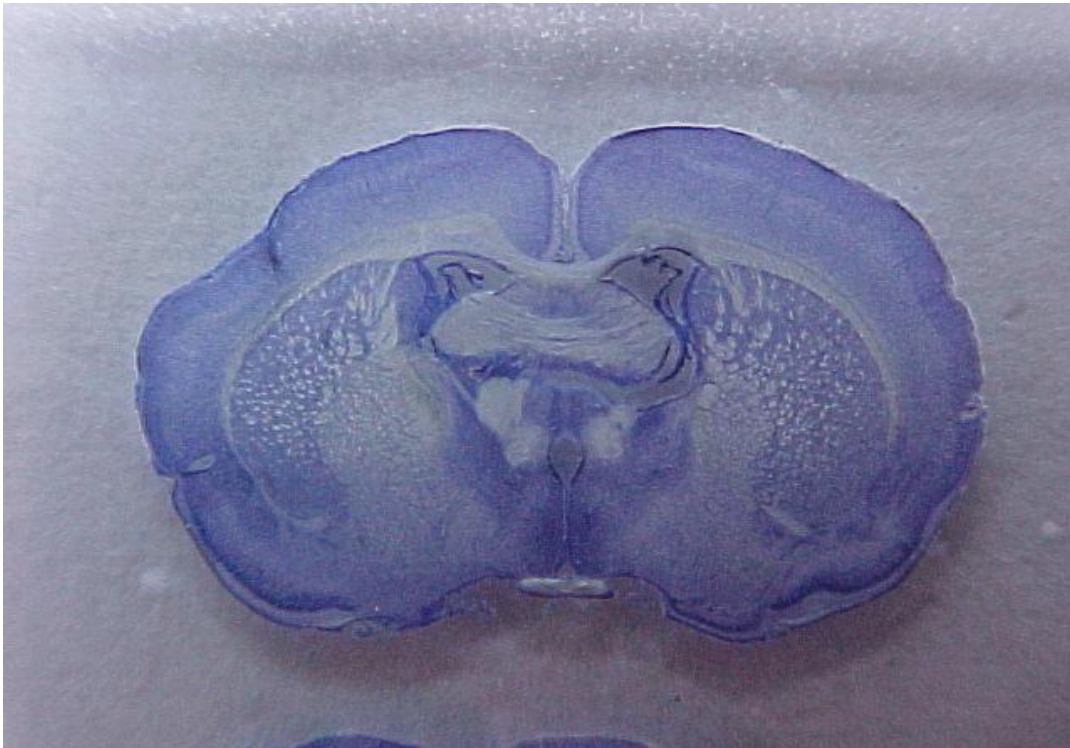


# Brain & Behavior Lab

Psychology 4511  
Spring Semester 2012

Instructor: Dr. Lynn White  
Five Thursday's 3:00-6:00 p.m.  
Email: [white\\_L@suu.edu](mailto:white_L@suu.edu)  
Pre-requisites: PSY 1010, PSY 4510

Office: GC 308, 586 x 7913  
Office hours: MWF 10:00-12:00  
Thursday: by appointment



## Course Description & Objectives

The intent of the lab is to give you hands on laboratory experience and training in the field of behavioral neuroscience. This will not only serve to enhance your appreciation for the interaction between physiology, the environment, and behavior, but also to develop some of the skills necessary to pursue graduate studies or a career in the same or a related field. It will help solidify the material learned in PSY 4510, as well as give you the information and experience necessary to make informed and responsible decisions concerning animal research.

## Laboratory Schedule

- Feb. 16: Humane Treatment & Use of Laboratory Rats  
Feb 23: Behavioral Inhibition and Stress Reactivity  
March 1: Stereotaxic Surgery: Hippocampal Lesions  
March 8: Perfusions & Histology  
March 22: Behavioral and HPA Analysis of Hippocampal Lesions

## Lab Exam – March 26-28 at the SUU testing center

This exam will be based on the materials and techniques learned in the laboratory exercises. It will consist of multiple choice, fill in the blanks, and short answer questions.

## Lab Summaries

Upon completion of each lab, you will be required to submit a typed summary of your notes, as well as the answers to any questions asked during the lab. I will give you guidelines for these notes before each lab. The purpose of this part of the course is to give you a written record of what you've learned, as well as something to study from for the lab exam. These notes will be worth 5 points each, and are due the Tuesday immediately following the lab (1/2 point/day if late). You will get full marks as long as the **effort** is there as well as the major ideas.

## Attendance

Attendance of the labs is **MANDATORY**. Should you miss a lab, there is no way to “re-do” it. Any student missing a lab will be required to write a 4 page (typed, double spaced) paper on a topic assigned by “yours truly”. The paper will be due within two weeks of the missed lab. and is worth 5 points. 1/2 point will be deducted from your grade for Perfusions & Histology each day you are late.

## Grading

lab summaries	25 points
lab exam	30 points

Your final grade in the course will be determined as;

A	52-55	C	40-41
A-	50-51	C-	38-39
B+	48-49	D+	36-37
B	46-47	D	34-35
B-	44-45	D-	32-33
C+	42-43	Fail	30-31

## Extra Credit

For those of you who would like to an opportunity to learn more and receive up to an additional 5% credit for it, there will be opportunities to become a “rat handler” and lab concierge. Rats need to be handled (e.g. petted) daily to be tamed, and I could use help setting up and cleaning the lab equipment and supplies. Depending on the number of handlers, you might need to go in 2x a week for 15 minutes. Concierges may need to put in 20 min. per lab for each of the 5 labs. If you are interested, let me know before the labs begin.

## Academic Integrity

Scholastic dishonesty will not be tolerated and is prosecuted to the fullest extent. You are expected to have read and understood the current issue of the student handbook (published by student services) regarding student responsibilities and rights, and the intellectual property policy, for information about procedures and about what constitutes acceptable on-campus behavior. Specific examples of cheating in this course include looking at or inquiring about someone else’s test answers, attempting to find out what was on a missed test from someone who already took it, copying another student’s lab assignment (entirely or in part), improperly referencing works used in a paper, failing to reference a source used in a paper, fabricating or falsifying data, and having someone else complete an assignment for you (in whole or in part).

## Assessment of Risk

As with many labs in the sciences, sharp knives and hazardous materials are used. However, I am trained with their use and every precaution will be taken to minimize the risk. Please inform me should you know or suspect you are pregnant so that additional safety precautions can be taken.

Another potential risk is that of being bitten/scratched/urinated/defecated on by one of the rats. Though I will instruct you on proper handling techniques, animals are unpredictable (as are you!) and I cannot guarantee that any of these things will not happen. You should make sure you are up to date on your tetanus just in case. Lastly, if you are allergic to rodents, cats, dogs etc... you may want to take appropriate precautions to avoid an allergy/asthma attack.

## Disclaimer

Information contained in this syllabus, other than the grading, late assignments, makeup work, and attendance policies, may be subject to change with advance notice, as deemed appropriate by the instructor.



## STATEMENTS REQUIRED IN COURSE SYLLABI

[Per SUU Policy 6.36](#)

**ACADEMIC INTEGRITY:** Scholastic dishonesty will not be tolerated and will be prosecuted to the fullest extent. You are expected to have read and understood the current issue of the student handbook (published by Student Services) regarding student responsibilities and rights, and the intellectual property policy, for information about procedures and about what constitutes acceptable on-campus behavior.

**ADA STATEMENT:** Students with medical, psychological, learning or other disabilities desiring academic adjustments, accommodations or auxiliary aids will need to contact the Southern Utah University Coordinator of Services for Students with Disabilities (SSD), in Room 206F of the Sharwan Smith Center or phone (435) 865-8022. SSD determines eligibility for and authorizes the provision of services.

**EMERGENCY MANAGEMENT STATEMENT:** In case of emergency, the University's Emergency Notification System (ENS) will be activated. Students are encouraged to maintain updated contact information using the link on the homepage of the *mySUU* portal. In addition, students are encouraged to familiarize themselves with the Emergency Response Protocols posted in each classroom. Detailed information about the University's emergency management plan can be found at <http://www.suu.edu/emergency>

**HEOA COMPLIANCE STATEMENT:** The sharing of copyrighted material through peer-to-peer (P2P) file sharing, except as provided under U.S. copyright law, is prohibited by law. Detailed information can be found at <http://www.suu.edu/it/p2p-student-notice.html>.