

General Information



MISSION STATEMENT

As a community of learners, Southern Utah University serves as a comprehensive regional university to encourage a lifelong love of learning, to foster academic excellence, to instill ethics and values and to honor thought in all its finest forms. Foremost to our role and central to our disciplines are superior teaching and quality service to students. Fundamental to our purpose are scholarly activities and public service.

Our mission is to provide students a personalized learning environment to foster meaningful experiences involving the mind, heart and hands, which:

1. Affirm integrity, the search for truth and respect for all people as the foundation of education;
2. Develop communication, analytic, creative and information gathering skills;
3. Prepare students as informed and responsible citizens and for effective roles in families and other societal organizations;
4. Afford opportunities for success in students' personal and professional lives by providing service and leadership experiences in a residential campus setting;
5. Enhance economic, technological and cultural development of the communities served.

Southern Utah University provides baccalaureate, applied technology, and selected graduate education. We address the unique needs of rural students and communities; serve as a major cultural center for southern Utah; and create partnerships with public and higher education, government, business and industry.

SOUTHERN UTAH UNIVERSITY

PROFILE

January 2004

Southern Utah University established: 1897
Public, Comprehensive, Coeducational, Masters I University
Accreditation: Northwest Association of Colleges and Schools
President: Steven D. Bennion
Calendar: Semester

Enrollment:

Fall Headcount 6,048
Fall FTE 4,946

Number of Fall Full-time Faculty: 205

Number of employees:

Contract 690
Non-student / Non-contract 133

Dorm capacity: 395

Average age (all students): 24.7

Degree programs:

Associate's 23
Bachelor's 55
Master's 12

Land and Facilities:

Campus Proper Acreage 129
Shakespearean Festival 4
Valley farm acreage 1,032
Mountain property 2,502
Other property 177
Total 3,844

Number of buildings: 76

No. of square feet in inventory: 1,312,804

Annualized FTE Student to FTE Faculty Ratio (Budget)

2002-03 Cost Study 21.53

Residency of Students:

Utah 5,497 90.9%
Non-Utah 551 9.1%

Utah Counties:

Southern 15 counties 3,469 57.4%
Northern 14 counties 1,452 24.0%
Out of State Residents 576 9.5%
Non-Utah 551 9.1%

Gender:

Male 2,731 45.2%
Female 3,317 54.8%

Ethnicity:

Asian 119 2.0%
Black 44 0.7%
Hispanic 106 1.8%
Native American 64 1.1%
Native Hawaiian
or Pacific Islander 24 0.4%
Other 19 0.3%
White 5,464 90.3%
Unspecified 208 3.4%

Six-year graduation rate for 1997 cohort:

32.9%

Average ACT score:

20.94

2002-03 Avg. Credit Hours Taught per FTE Faculty:

12.5

2002-03 Avg. Credits Earned Toward Graduation:

146.6

2002-03 Avg. Years for a Bachelor's Degree:

4.3

2002 Graduates with Bachelor Degrees Seeking Employment:

5%

GENERAL OFFICERS OF ADMINISTRATION

Office of the President

President Steven D. Bennion
Assistant Attorney General/Legal Counsel D. Michael Carter

Academic Affairs

Provost Abe Harraf
Associate Provost Michael D. Richards
Assistant Provost for Information Technology Glen Pryor

Administrative and Financial Services

Vice President Gregory Stauffer
Associate Vice President Dorian Page

Advancement and Regional Services

Vice President D. Mark Barton

Student Services

Vice President Georgia Beth Thompson
Associate Vice President & Dean of Students Neal L. Cox
Assistant Vice President Dale S. Orton

Deans

Dean, School of Applied Science and Technology Cynthia Wright
Dean, Business and Technology Carl Templin
Dean, School of Continuing and Professional Studies Carl Ellis
Dean, Education Bruce Barker
Dean, Humanities and Social Sciences Rodney D. Decker
Dean, Library Diana T. Graff
Dean, Performing and Visual Arts Charles Metten
Dean, Science Harold Ornes

Department Chairs

Accounting and Information Systems David S. Christensen
Applied Science Dan Dail
Applied Technology Richard Wittwer
Art Brian P. Hoover
Biology Kate Grandison
Communication Jon M. Smith
Economics and Finance Rhead S. Bowman
Elementary Education Jerry Bowler
English Kay K. Cook
Foreign Languages and Humanities James W. Harrison
Management and Marketing Alan Hamlin
Mathematics and Computer Science Mikhail M. Bouniaev
Music Bart Shanklin
Physical Education Craig Morrison
Physical Science and Engineering Robert Eves
Psychology Leslie N. Jones
Secondary Education Lee Montgomery
Social Sciences Earl Mulderink
Theatre Arts and Dance Terral S. Lewis

Accreditation of Programs
General University Accreditation: Northwest Association of Schools and Colleges.

<u>College</u>	<u>Department/Major</u>	<u>Agency</u>
Performing & Visual Arts	Music Music Education	National Association of Schools of Music
Business	Accounting Finance Management Marketing Master of Accountancy Master of Business Administration	Association of Collegiate Schools of Business
Education	Elementary Education Secondary Education Special Education Early Childhood Education Education Administrative/ Supervisory License Athletic Training	National Association of State Directors of Teacher Education and Certification National Council for Accreditation of Teacher Education National Athletic Training Association (Candidacy)
School of Applied Science & Technology	Automotive Applied Technology Education Family & Consumer Sciences Education	National Automotive Technicians Education Foundation/Automotive Service Excellence (NATEF/ASE) Utah State Office of Education Utah State Office of Education
Science	Nursing (w/ Weber State Univ.)	National League for Nursing Utah State Board of Nursing

Southern Utah University Peer Institutions

Boise State University
California State University at Dominguez Hills
Clarion University of Pennsylvania
Indiana University/Purdue University at Fort Wayne
University of North Florida
University of Northern Iowa
University of Wisconsin at Whitewater
Western Carolina University
Western Washington University
Youngstown State University

Association Memberships

- ▶ American Association of College of Nursing
- ▶ American Association of College Registrars and Admissions Officers
- ▶ American Association of Colleges for Teacher Education
- ▶ American Association for Higher Education
- ▶ American Association of State Colleges and Universities
- ▶ American Association of University Women
- ▶ American Council on Education
- ▶ American Library Association
- ▶ Association for the Advancement of Collegiate Schools of Business–International (AACSB International)
- ▶ Association for Supervision and Curriculum Development
- ▶ Association of American Colleges and Universities
- ▶ Association of Collegiate Business Schools and Programs (ACBSP)
- ▶ Association for Continuing Higher Education
- ▶ Association for Institutional Research
- ▶ The College Board
- ▶ Council for Advancement and Support of Education
- ▶ EDUCAUSE
- ▶ International Technology Education Association (ITEA)
- ▶ Mountain Plains Adult Education Association
- ▶ National Association of College and University Business Officers
- ▶ National Association of Rural Health
- ▶ National Association for Schools of Music
- ▶ National Association of Student Financial Aid Administrators
- ▶ National Business Education Association
- ▶ National Collegiate Athletic Association
- ▶ National League for Nursing
- ▶ National Rural Education Association
- ▶ North American Association of Summer Sessions

- ▶ Professional and Organizational Developmental Network in Higher Education (POD)
- ▶ Society for College and University Planning
- ▶ University Continuing Education Association (UCEA)
- ▶ Utah Academic Library Consortium
- ▶ Western Association of Summer Session Administrators
- ▶ Western Interstate Commission for Higher Education (WICHE)

* The above listing is only to be representative of the major types of memberships held by the University.

Clubs & Organizations

Club Categories

Academic Development

- **AKD Sociology Club**
- **Block and Bridle**
- **Education Club**
- **Elite Achievers**
- **Geology Club**
- **Lambda Pi Eta**
- **Mystery Writers & Poets Society**
- **Sigma Delta Omicron**
- **Student Council for Exceptional Children**
- **Student Reading Council**

Art and Entertainment

- **Ballroom Dance**
- **Film Club**
- **Masque Club**
- **Music Club**
- **Orchesis**
- **Power 91**
- **TV Club**
- **Waukeenyans**

Athletics and Recreation

- **Cheer Squad**
- **Climbing Club**
- **Crochet Club**
- **Mountain Biking Club**
- **Snowboard & Ski Club**
- **Swing Club**
- **Ultimate Frisbee Club**
- **Volleyball Club**

Professional Development

- **The Academy**
- **Alpha Epsilon Delta (AED)**
- **ASDA (Pre-Dental)**
- **CEO**
- **Delta Epsilon Chi (DEX)**
- **Engineering Club**
- **Phi Beta Lambda**
- **Pi Sigma Alpha**
- **Professional Accountancy Club (PAC)**
- **Psi Chi**
- **Society for Human Resource Management**
- **Society of Professional Journalists**
- **Student Nurses Association**
- **Vocational Industrial Clubs of America**

Service and Greeks

- **Alternative Spring Break (ASB)**
- **Earth Club**

- **Greek Life**
 - **Alpha Phi**
 - **Delta Psi Omega**
 - **Sigma Chi**
 - **Sigma Nu**

Support and Multicultural

- **Asian Club**
- **Campus Christian Fellowship**
- **College Democrats**
- **College Republicans**
- **Hispanic Club**
- **Latter-Day Saint Student Association (LDSSA)**
- **Native American Student Association (NASA)**
- **Newman Club**
- **PRIDE**
- **Polynesian Club**
- **Residential Housing Association**
- **SAFE**

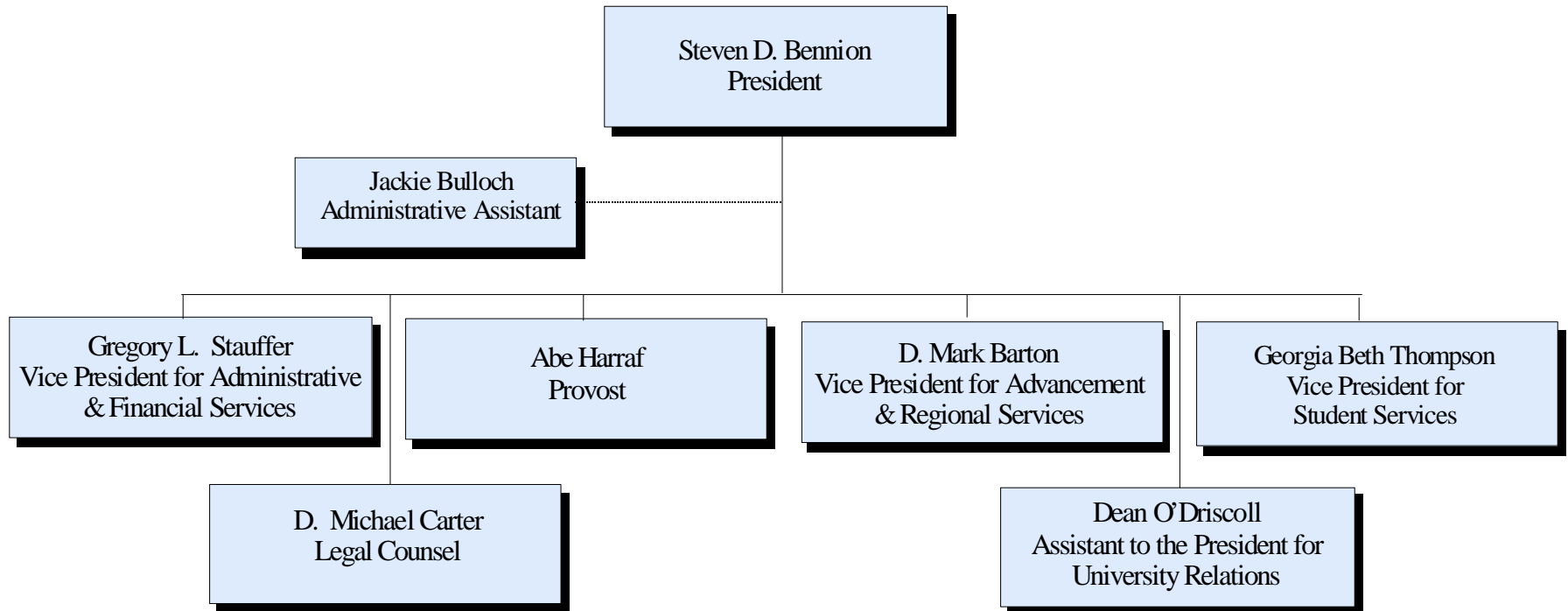
Note: For more information on any of these clubs or organizations please go to the SUU Clubs & Organizations web page at <http://www.suu.edu/orgs/>

Southern Utah University Presidents

Milton Bennion	1897-1900
J. Reuben Clark, Jr.	1900-1901
Nathan T. Porter	1901-1904
George W. Decker	1904-1913
Roy F. Homer	1913-1921
Peter V. Cardon	1921-1922
J. Howard Maughan	1922-1929
Henry Oberhansley	1929-1945
H. Wayne Driggs	1945-1951
Daryl Chase	1951-1953
Royden C. Braithwaite	1955-1978
Orville D. Carnahan	1978-1981
Gerald R. Sherratt	1982-1997
Steven D. Bennion	1997-

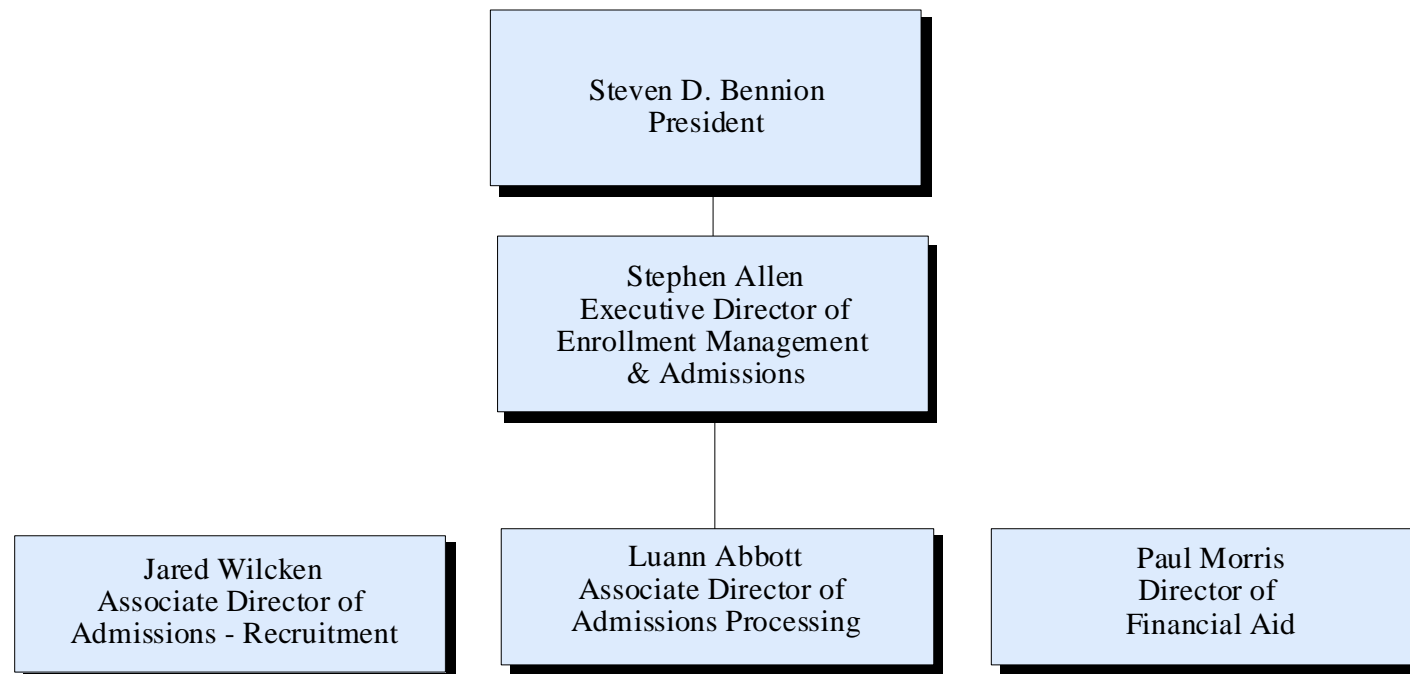
Southern Utah University

President's Council Organizational Chart



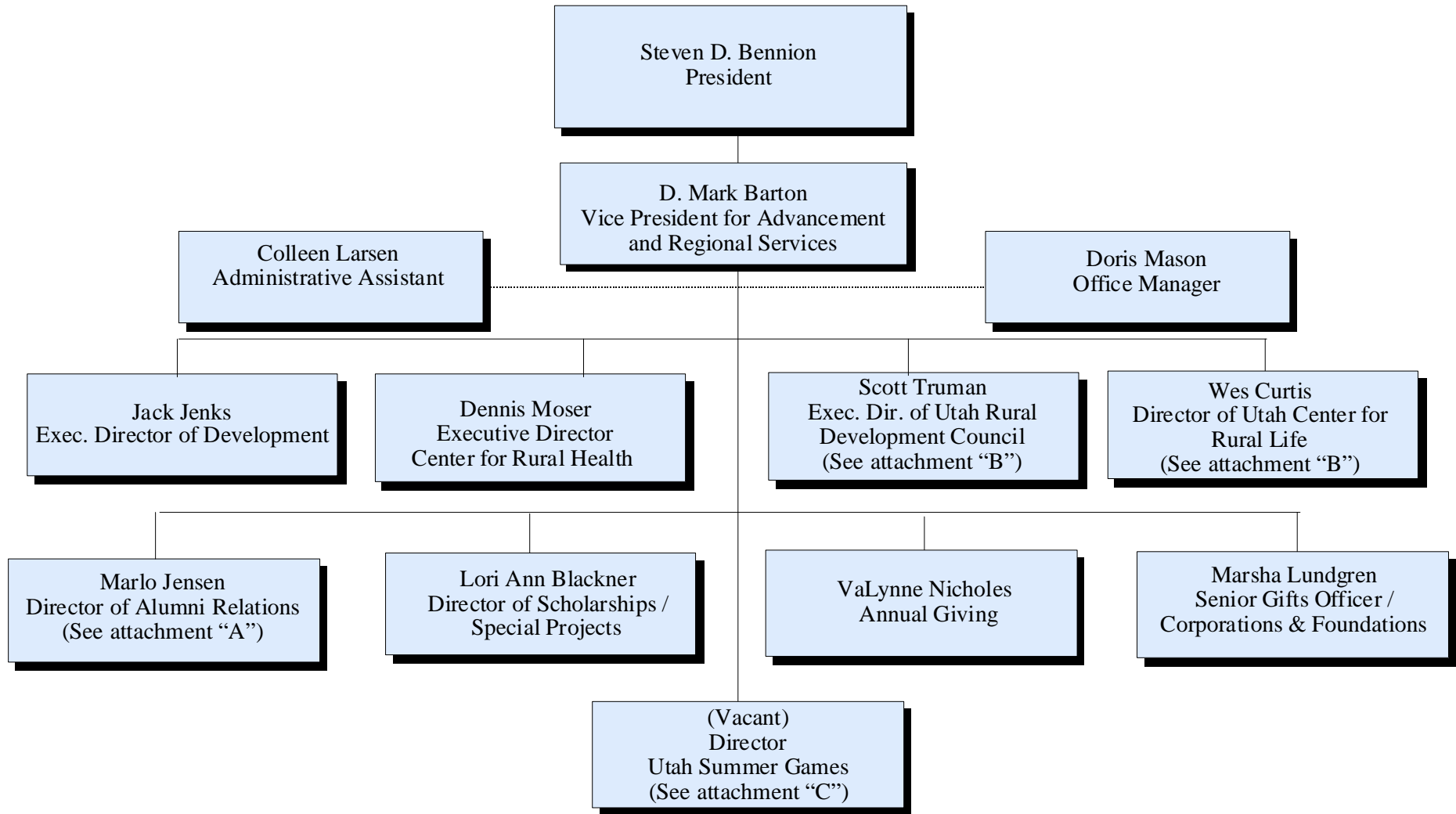
Southern Utah University

Enrollment Management & Admissions



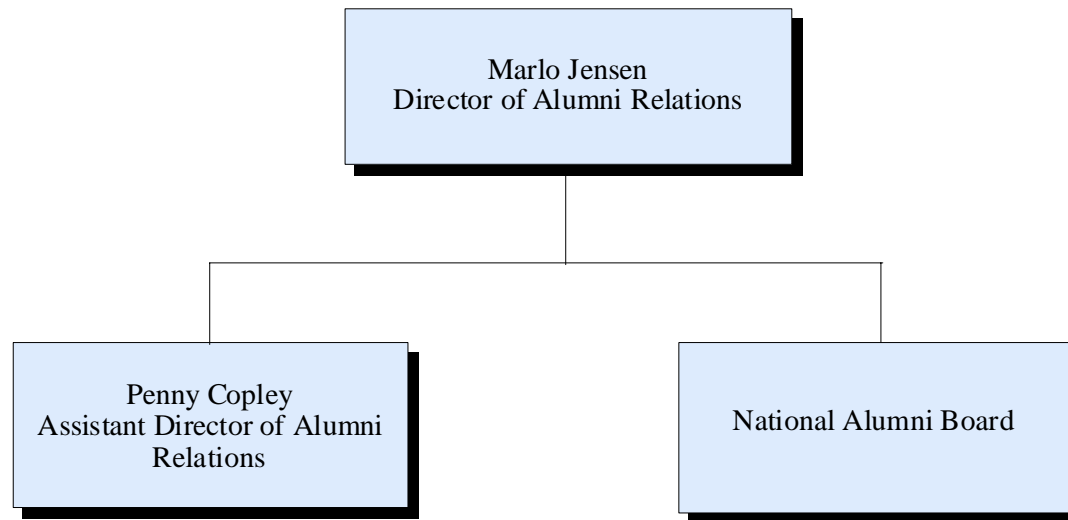
Southern Utah University

University Advancement Organizational Chart



Southern Utah University

University Advancement Organizational Chart Attachment "A" Alumni Relations

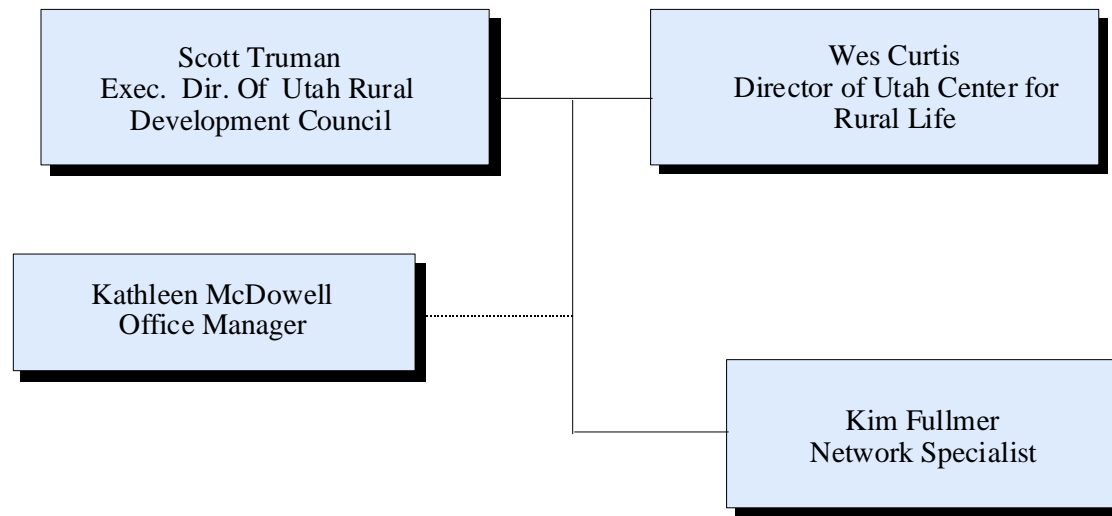


Southern Utah University

University Advancement Organizational Chart

Attachment "B"

Regional Services

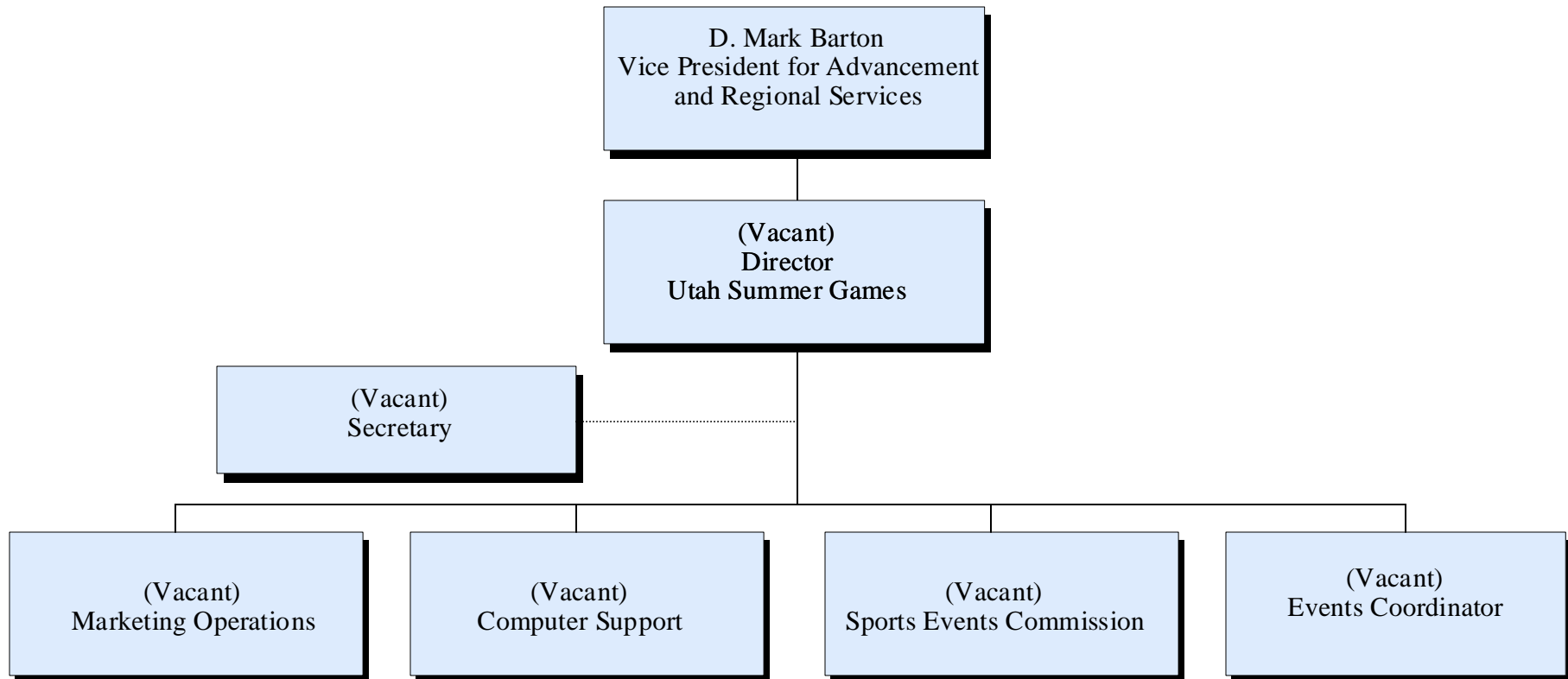


Southern Utah University

University Advancement Organizational Chart

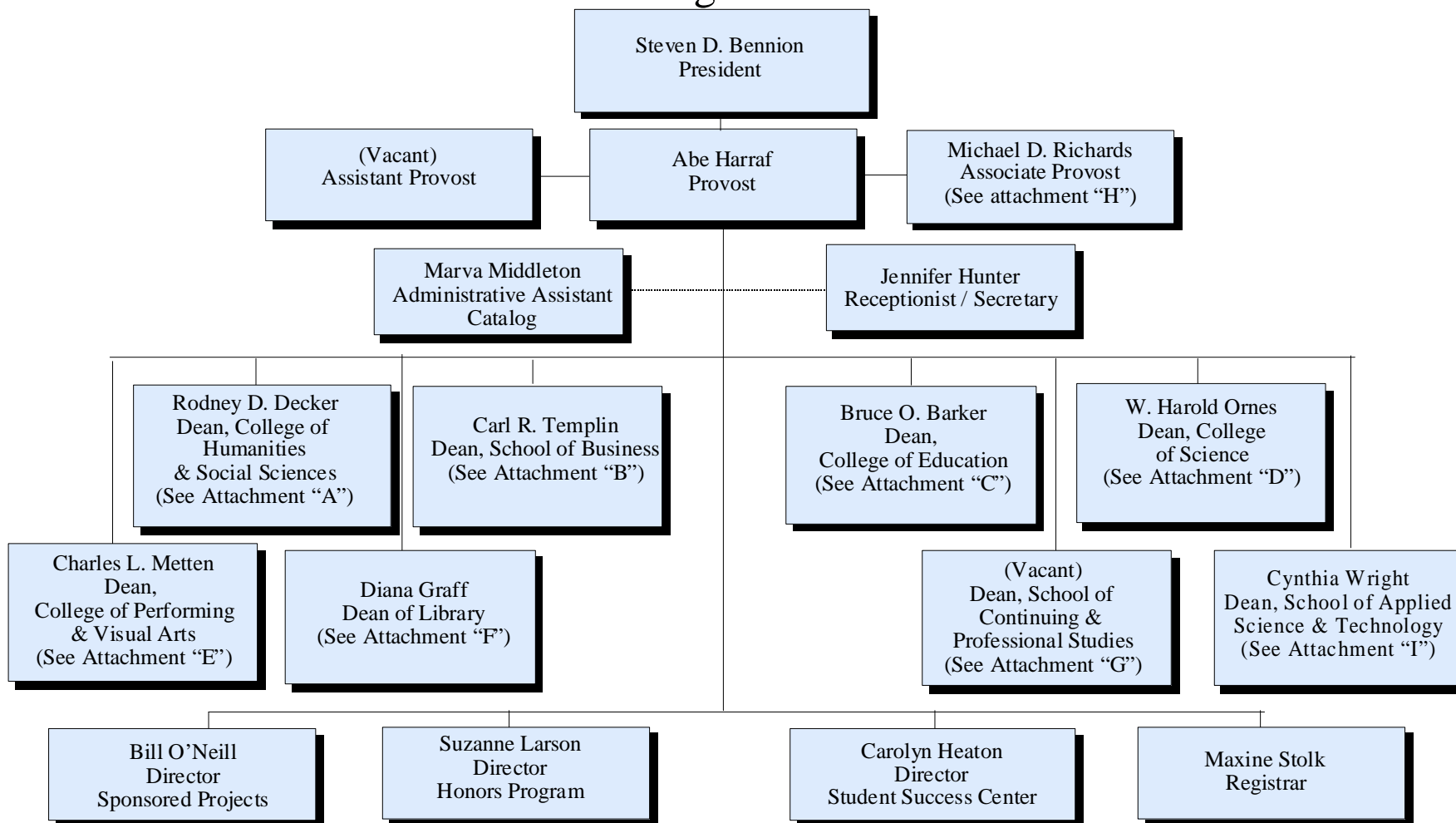
Attachment "C"

Utah Summer Games



Southern Utah University

Academics Organizational Chart

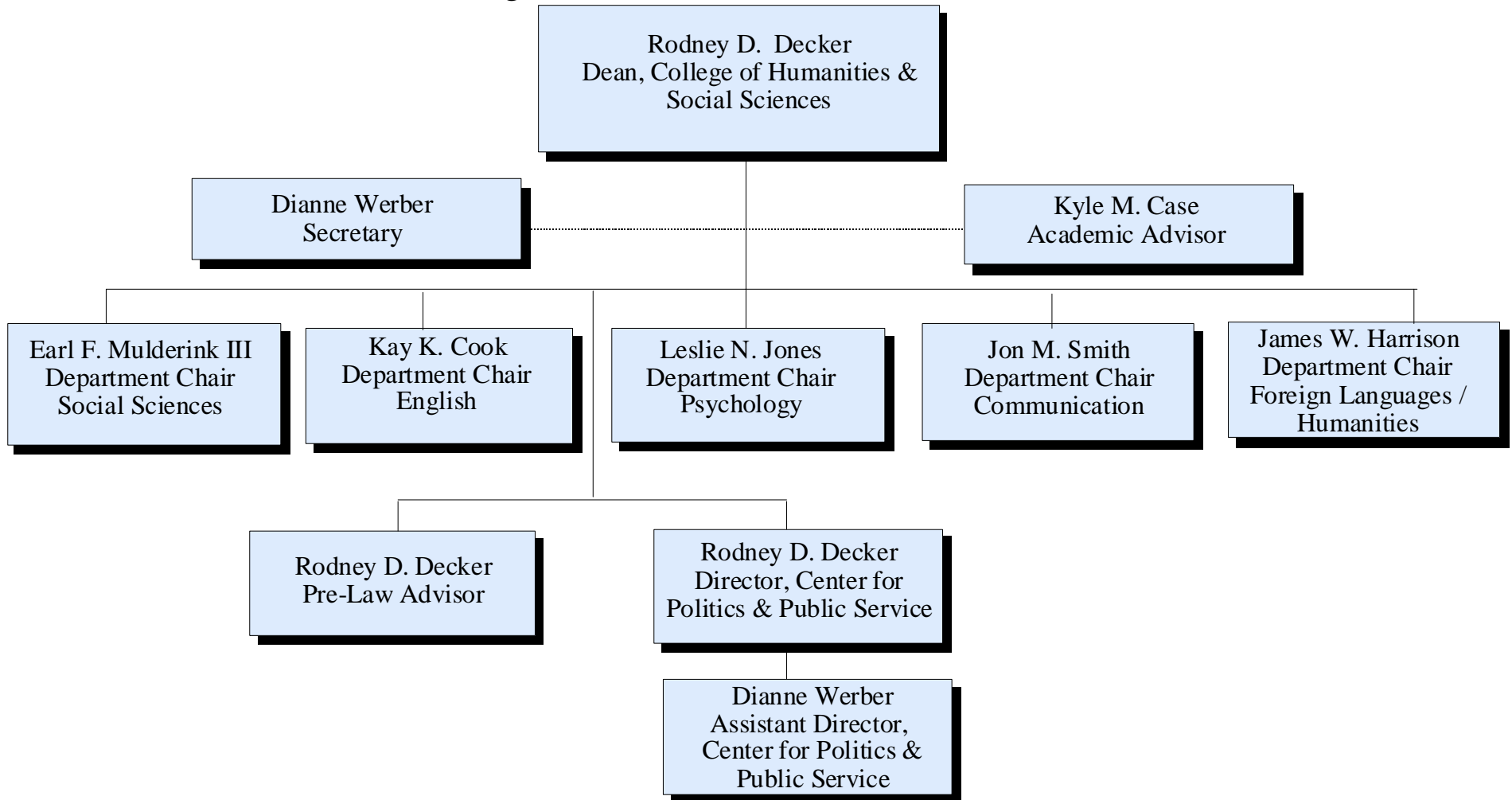


Southern Utah University

Academics Organizational Chart

Attachment "A"

College of Humanities & Social Sciences

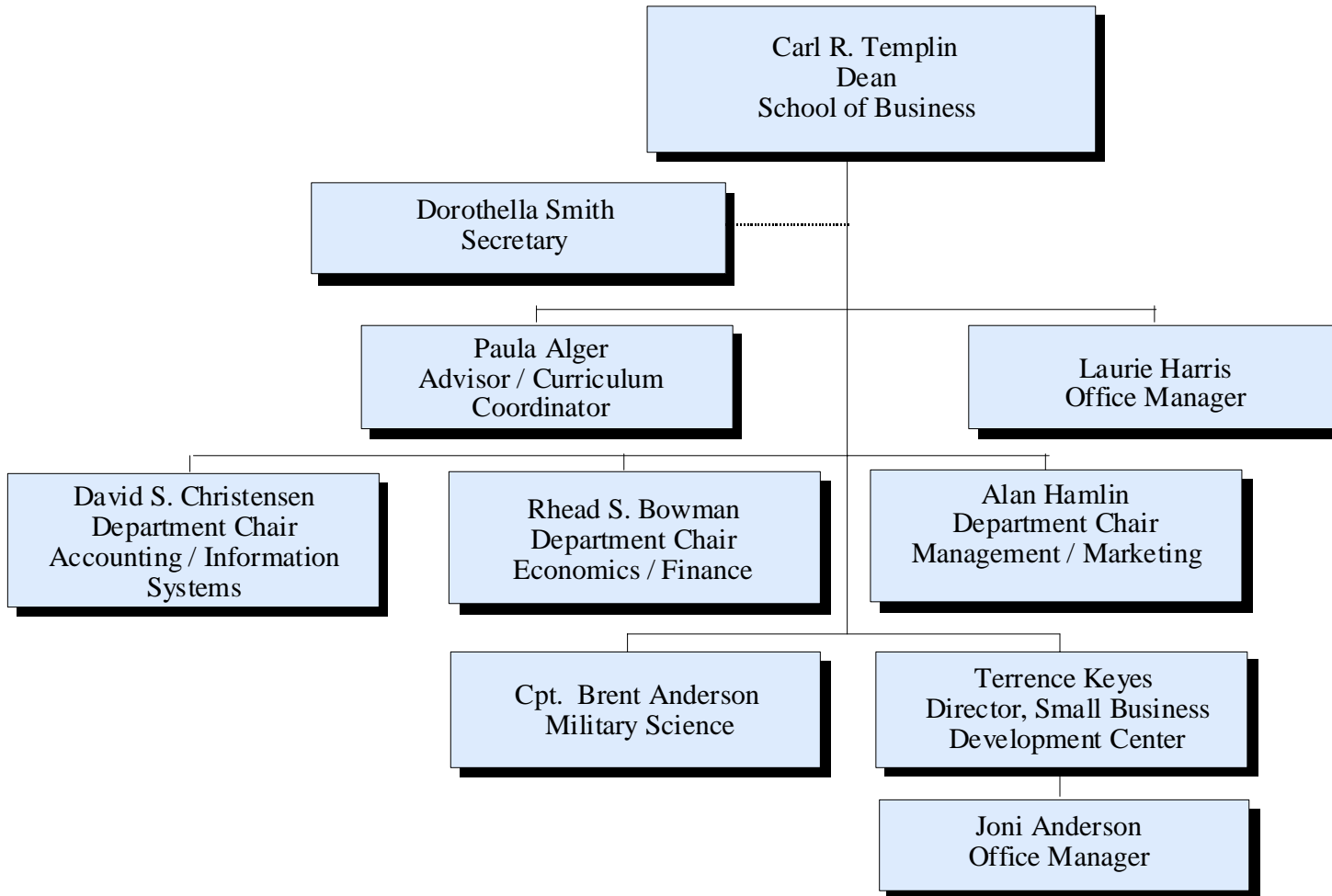


Southern Utah University

Academics Organizational Chart

Attachment "B"

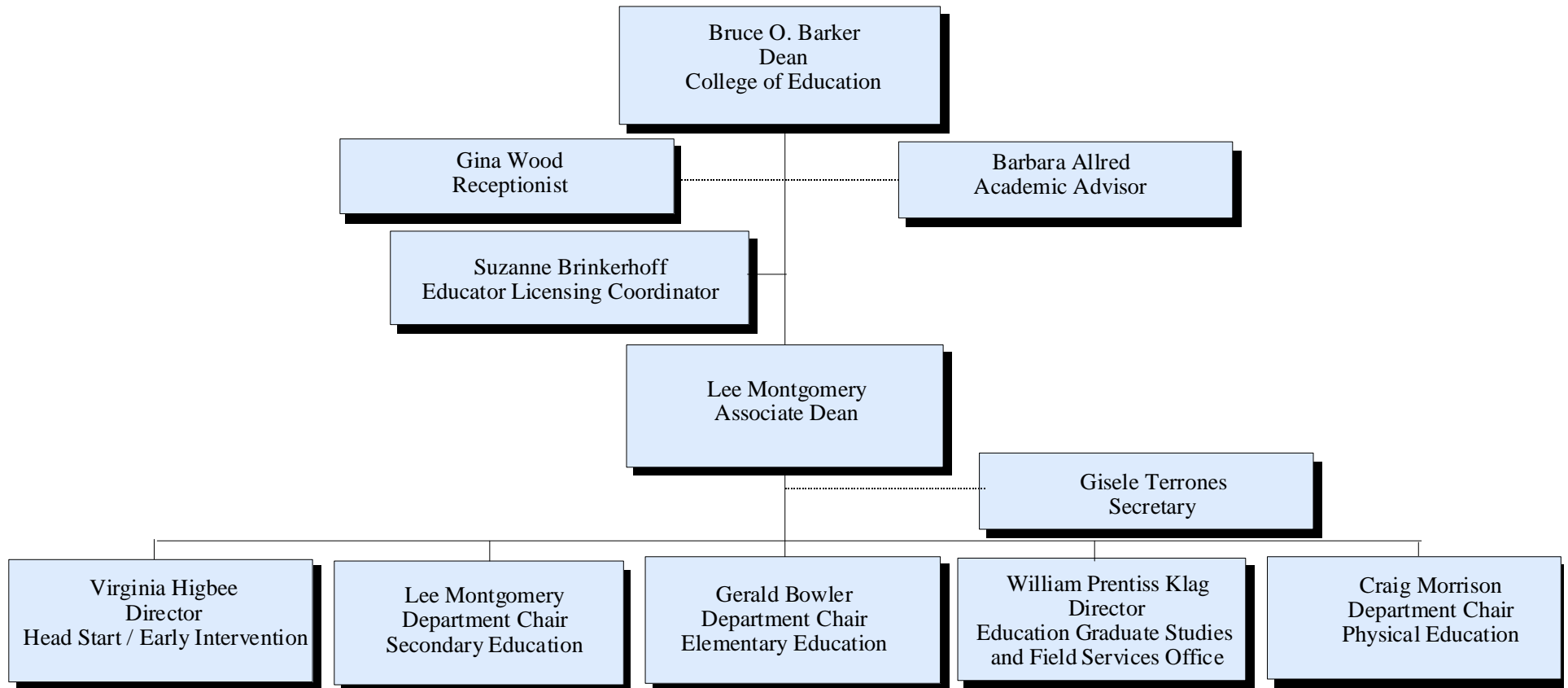
School of Business



Southern Utah University

Academic Organizational Chart

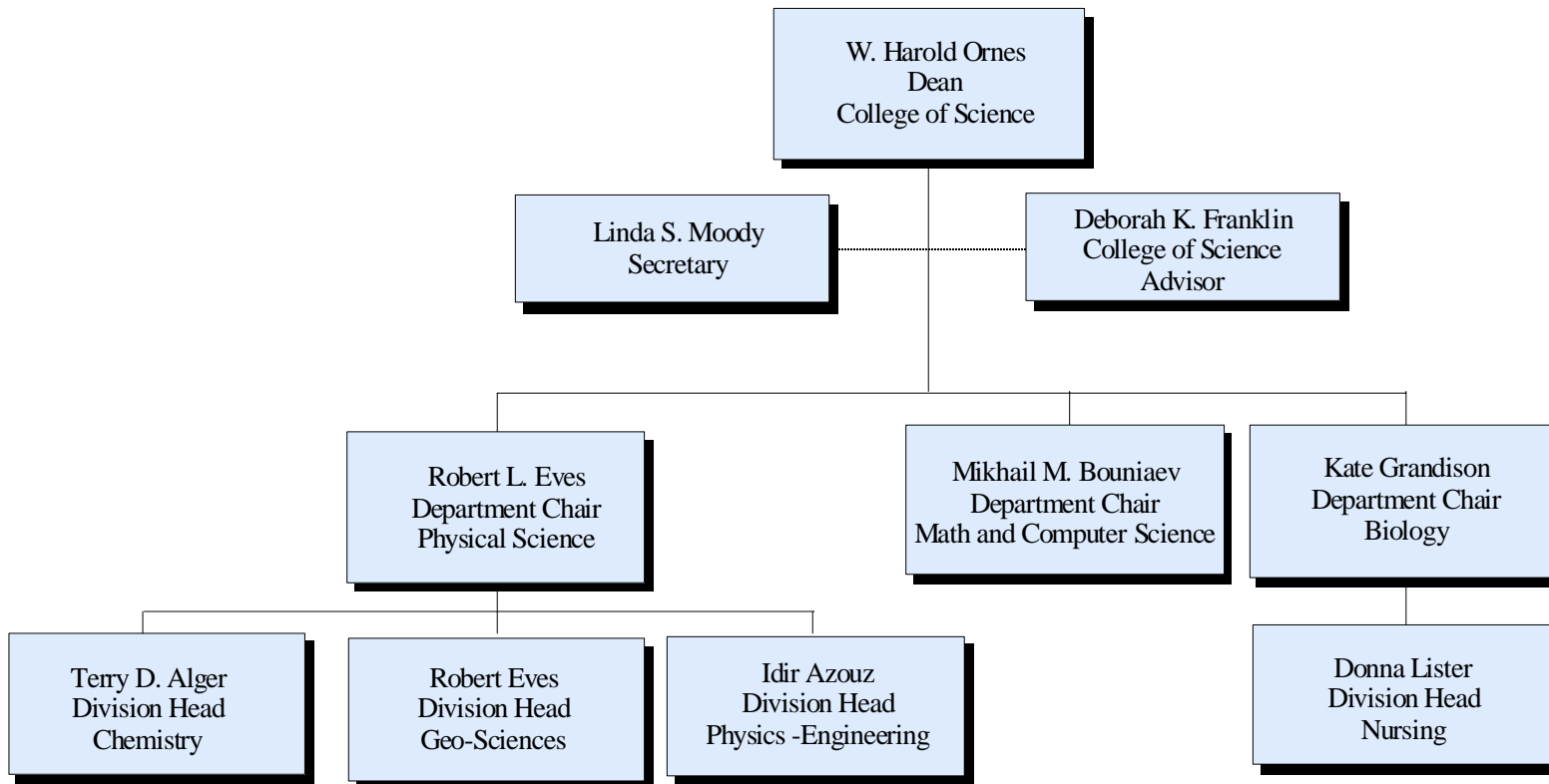
Attachment "C" College of Education



Southern Utah University

Academics Organizational Chart

Attachment "D" College of Science

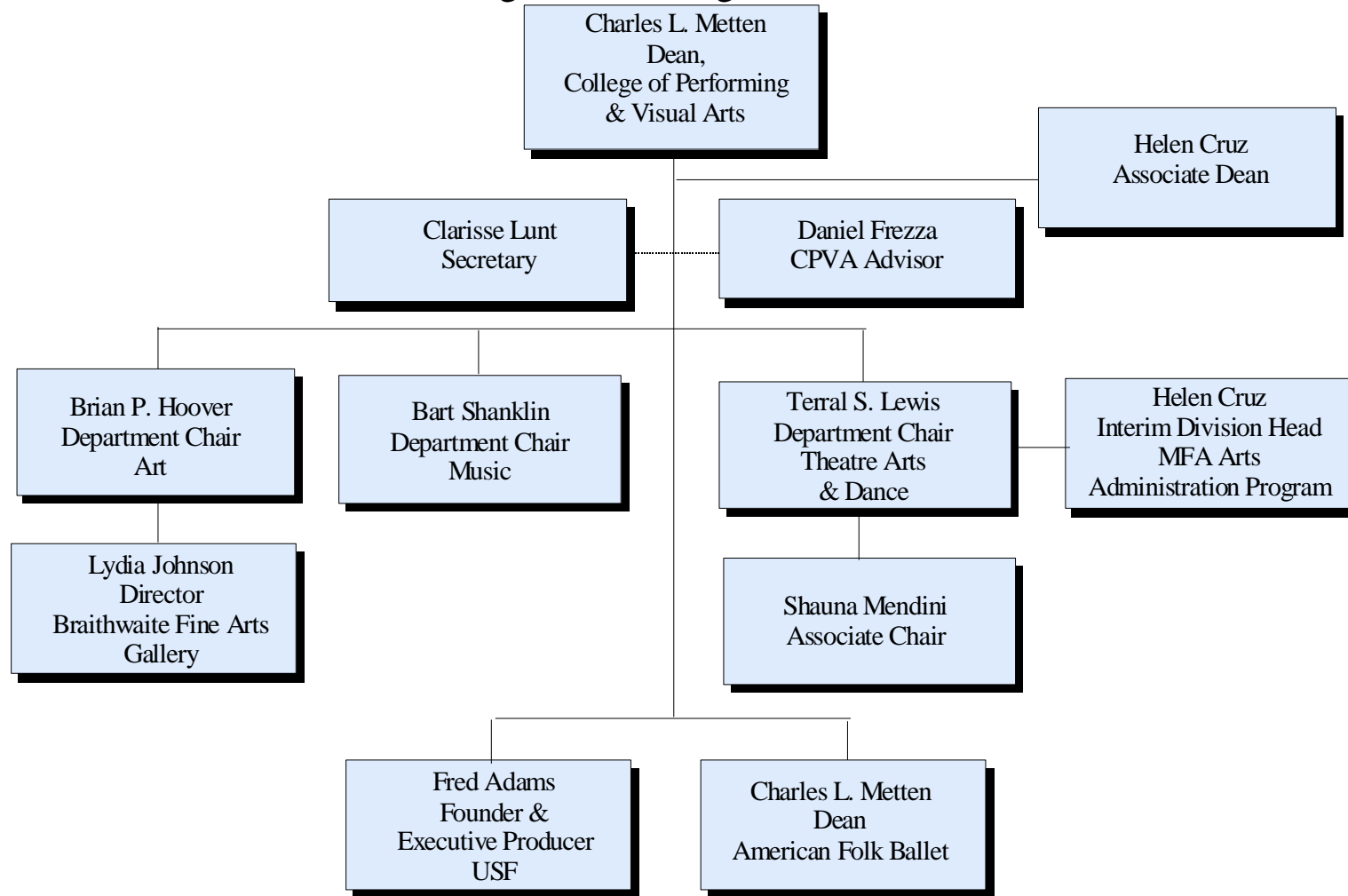


Southern Utah University

Academics Organizational Chart

Attachment 'E'

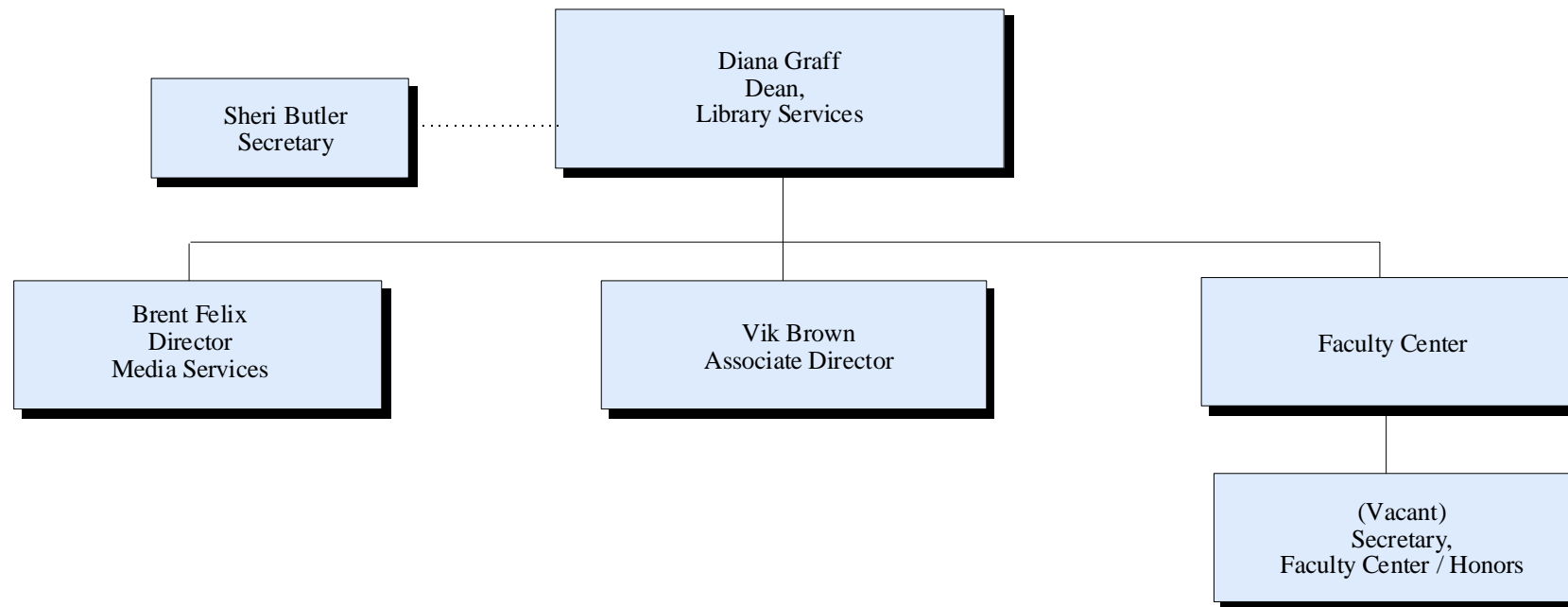
College of Performing & Visual Arts



Southern Utah University

Academics Organizational Chart

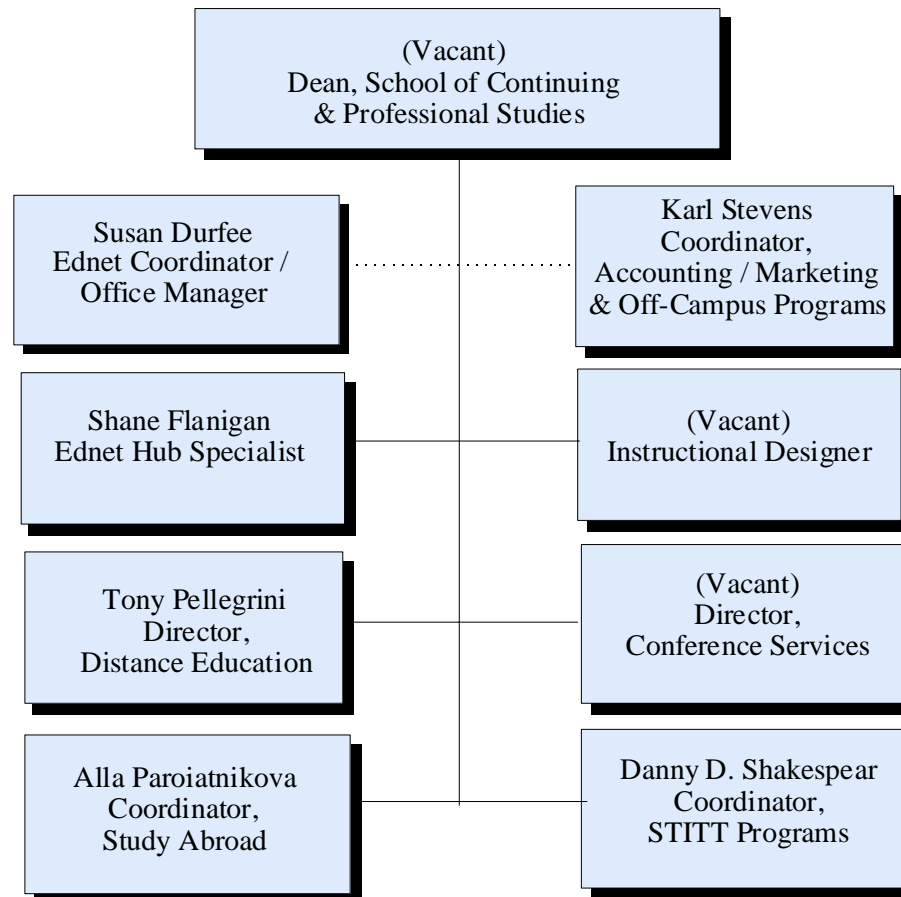
Dean, Library Services
Attachment "F"



Southern Utah University

Academics Organizational Chart

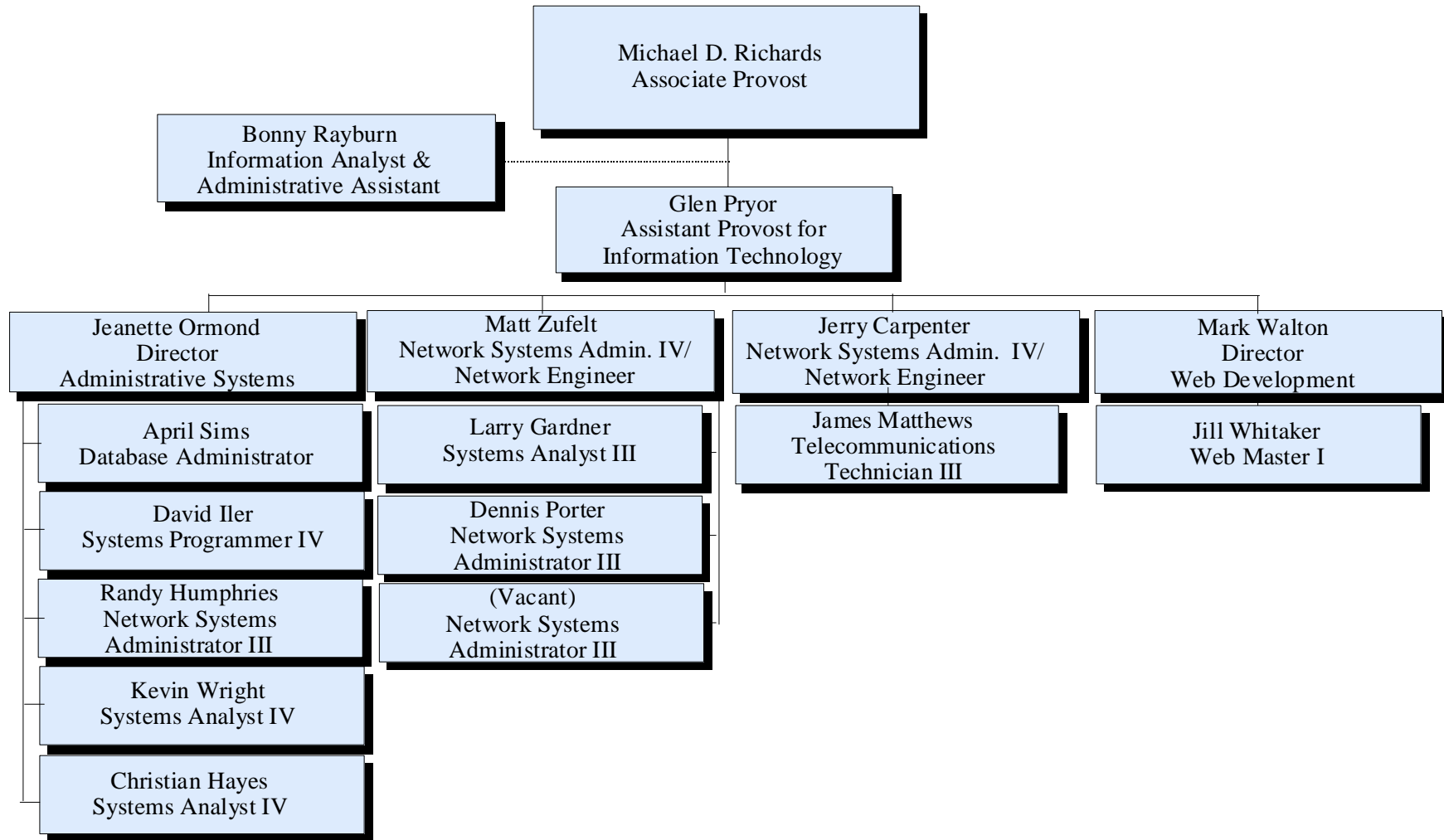
Dean, School of Continuing & Professional Studies
Attachment "G"



Southern Utah University

Academics Organizational Chart

Attachment "H"

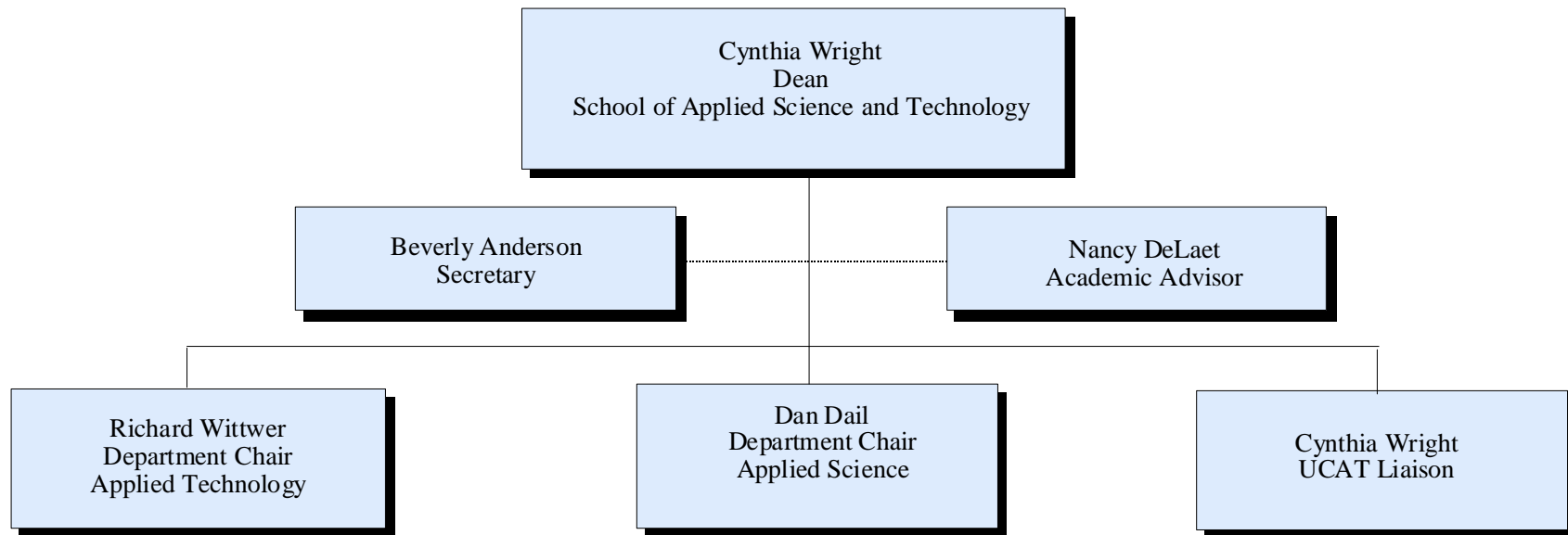


Southern Utah University

Academic Organizational Chart

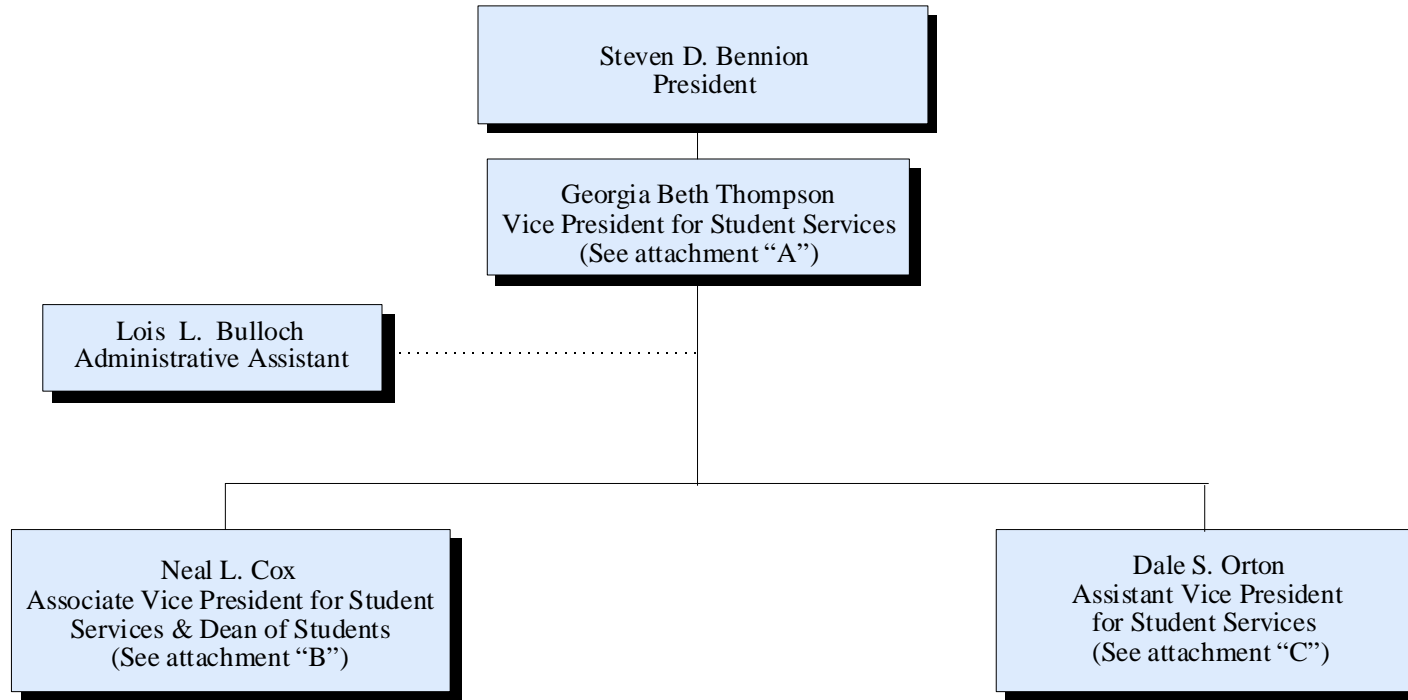
Attachment "I"

School of Applied Science and Technology



Southern Utah University

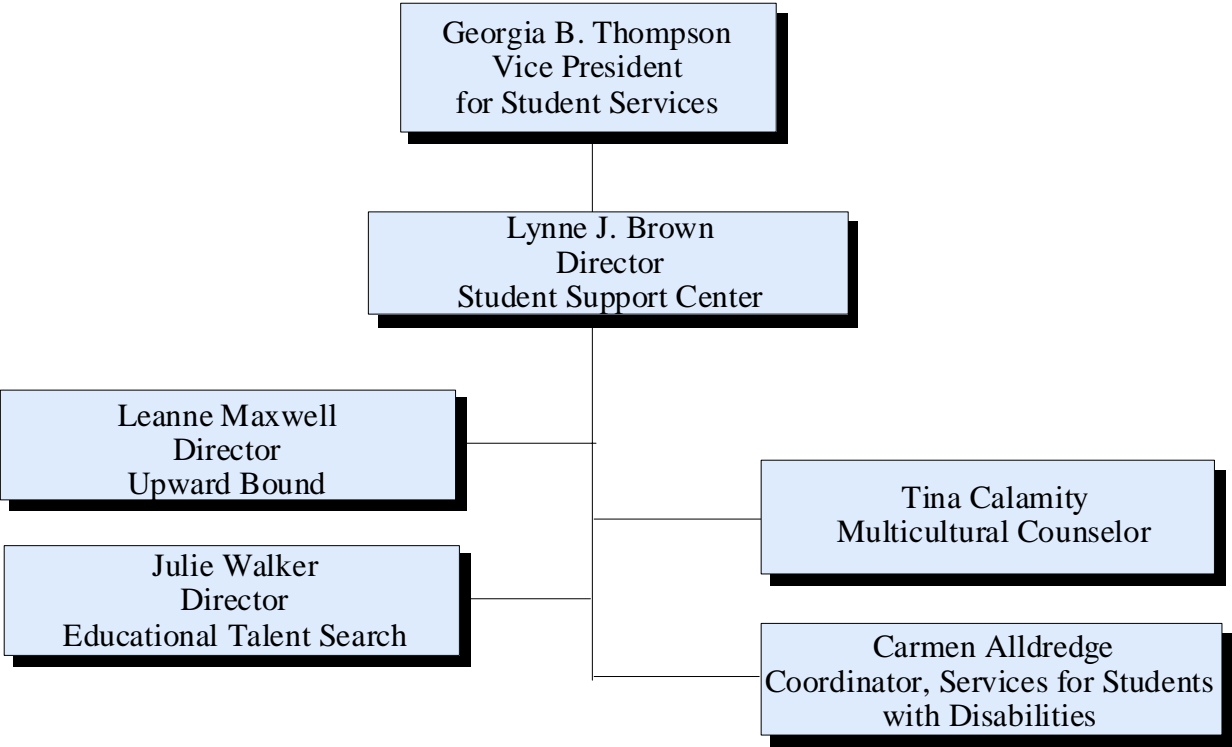
Student Services Organizational Chart



Southern Utah University

Student Services Organizational Chart

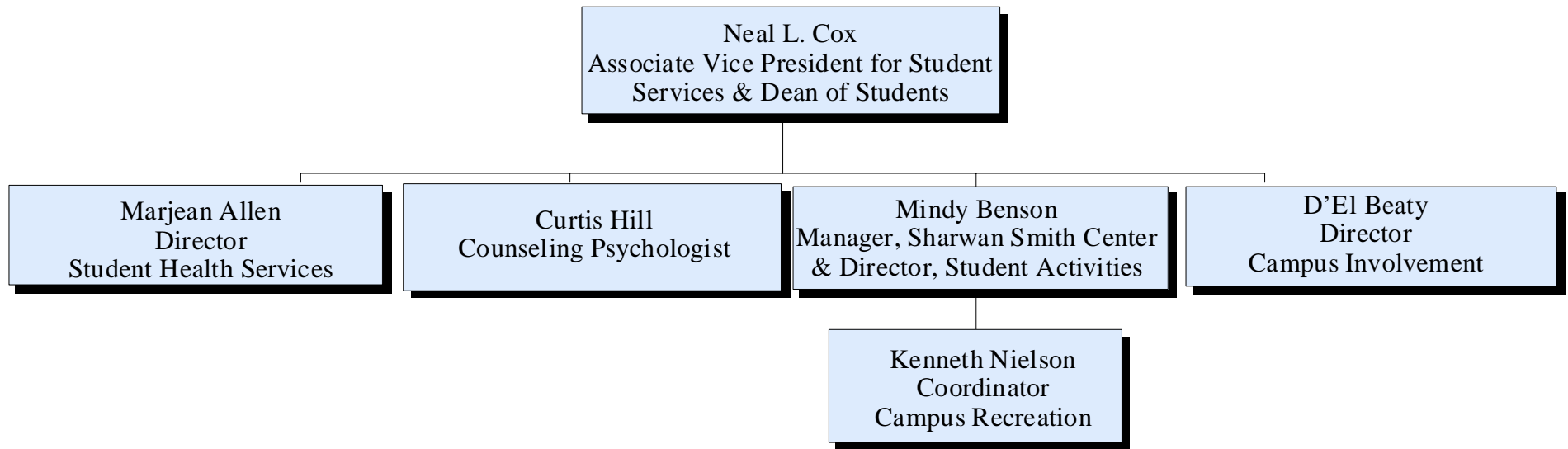
Attachment "A"



Southern Utah University

Student Services Organizational Chart

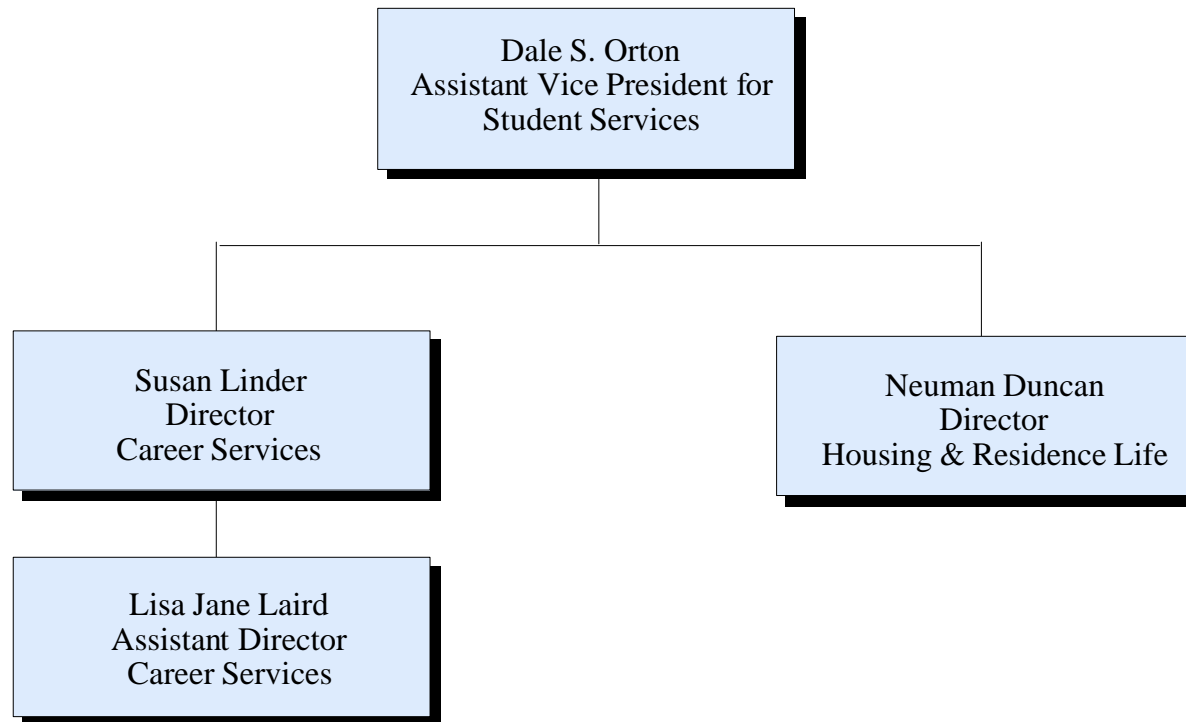
Attachment "B"



Southern Utah University

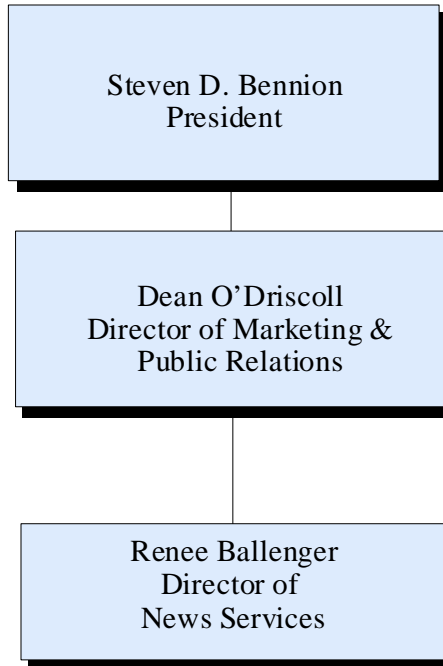
Student Services Organizational Chart

Attachment "C"



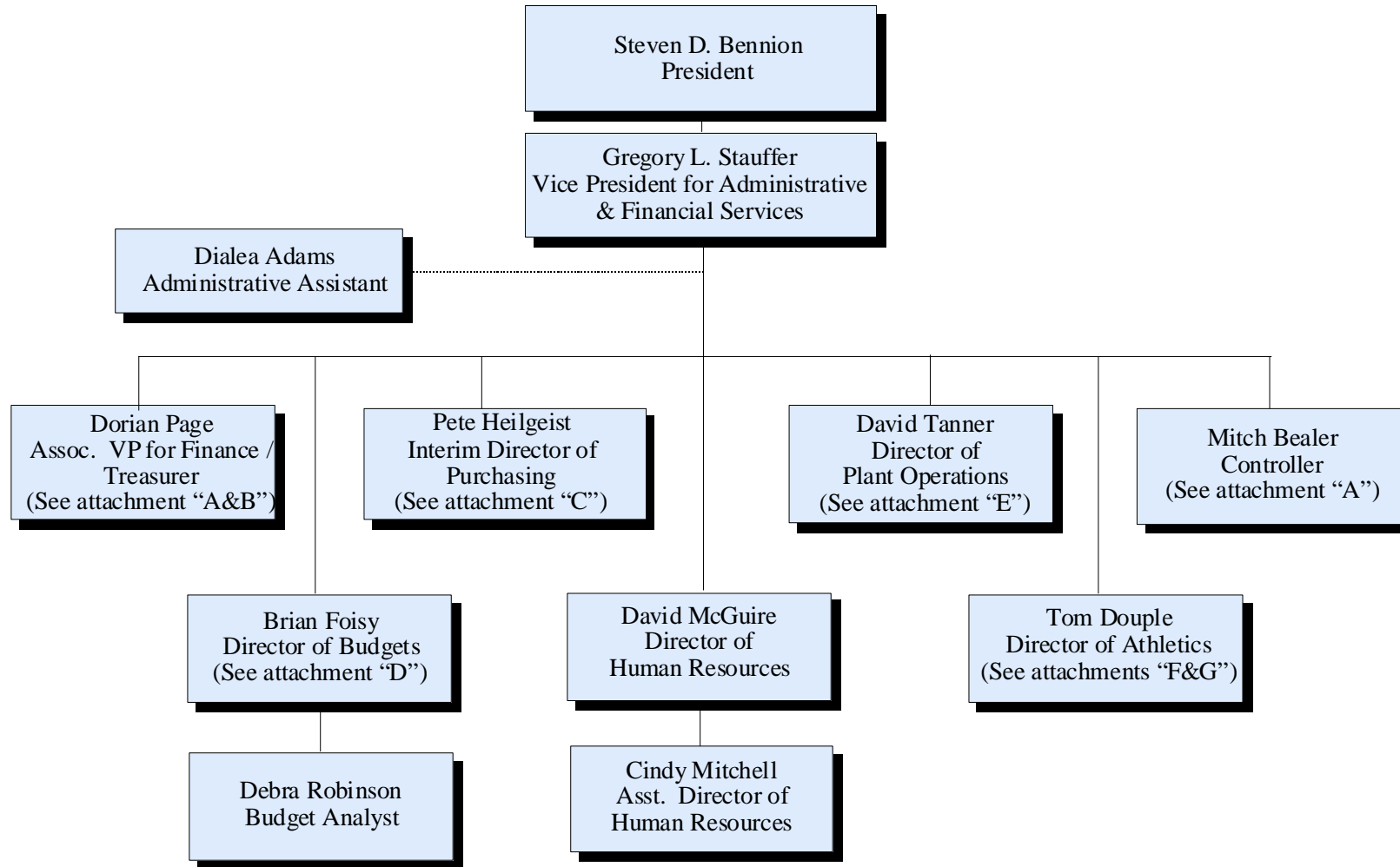
Southern Utah University

Public Relations Organizational Chart



Southern Utah University

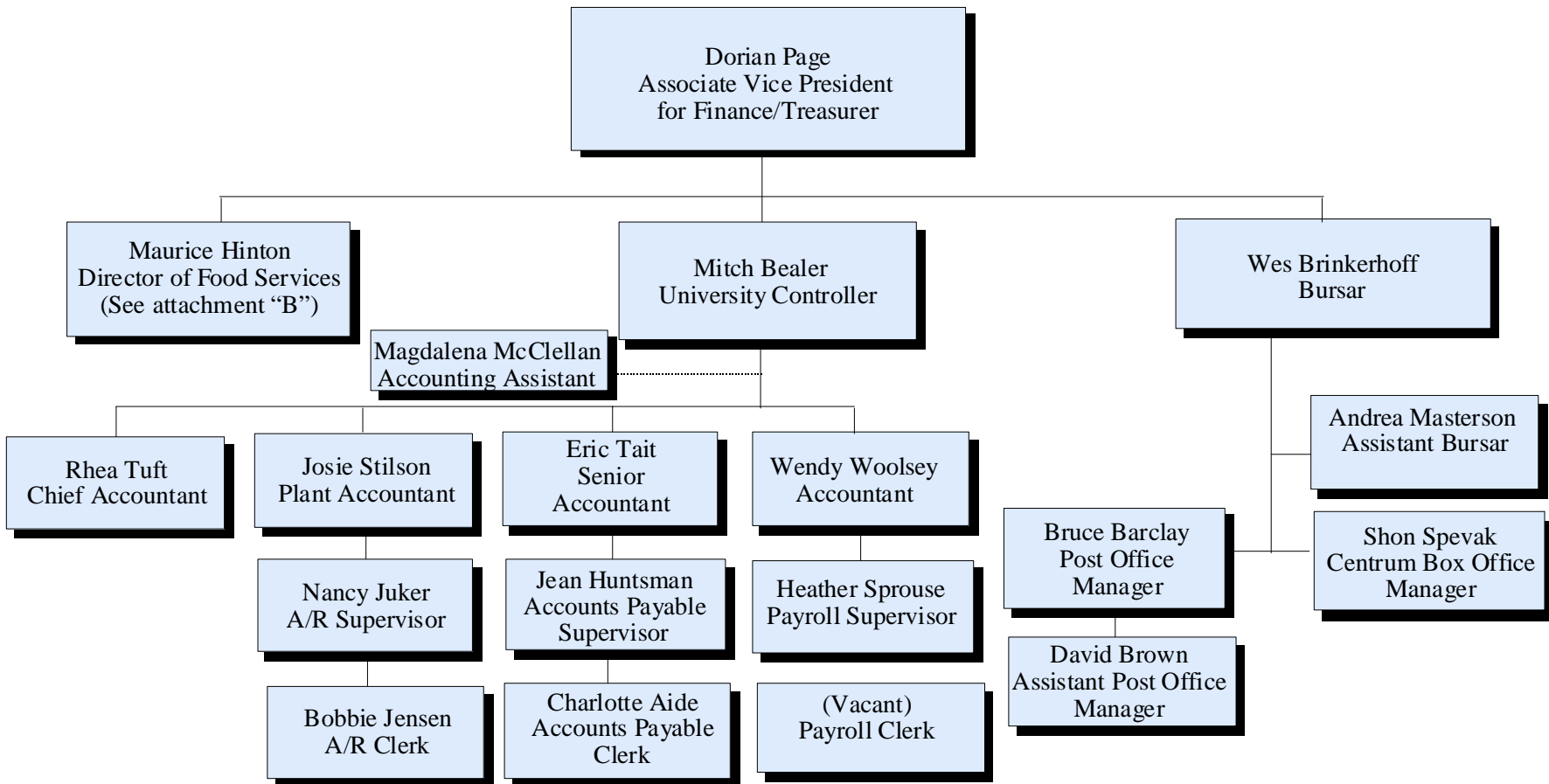
Administrative & Financial Services Organizational Chart



Southern Utah University

Administrative and Financial Services Organizational Chart

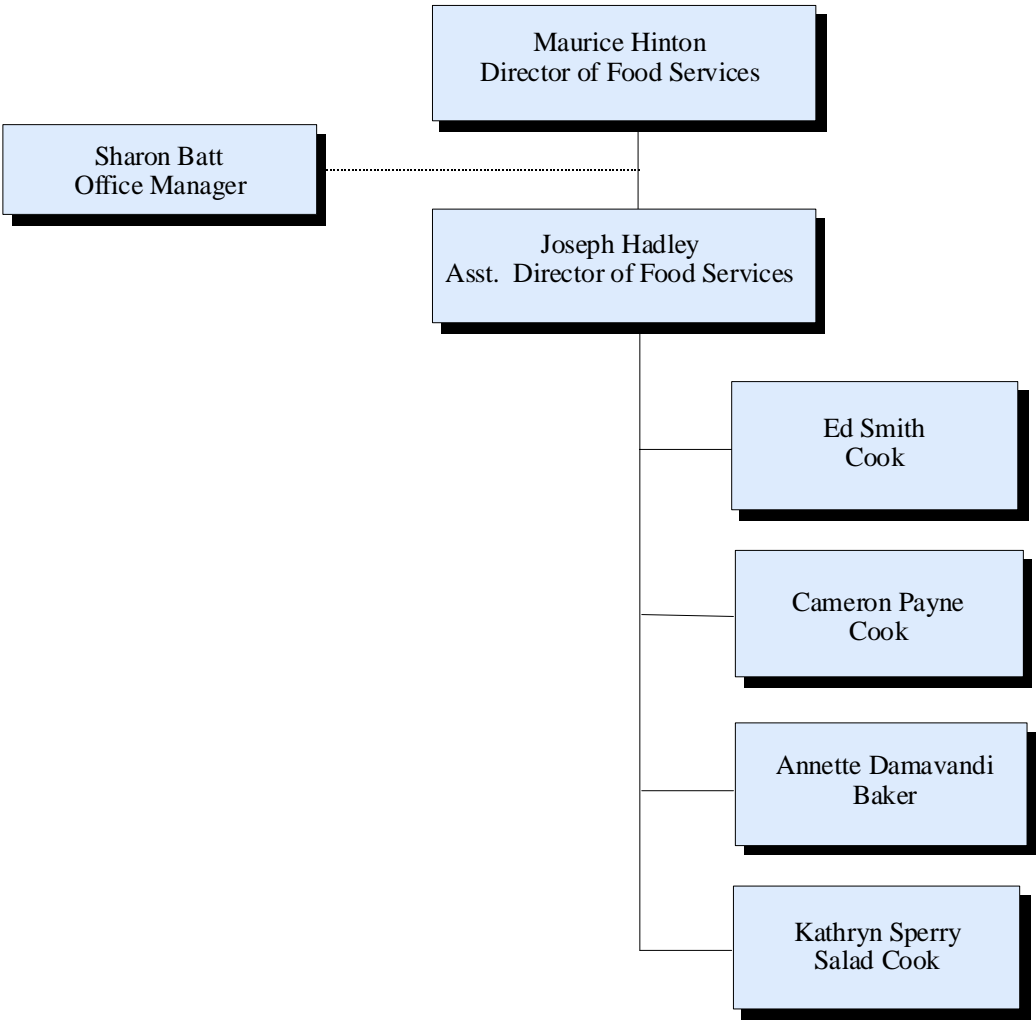
Attachment "A"



Southern Utah University

Administrative & Financial Services Organizational Chart

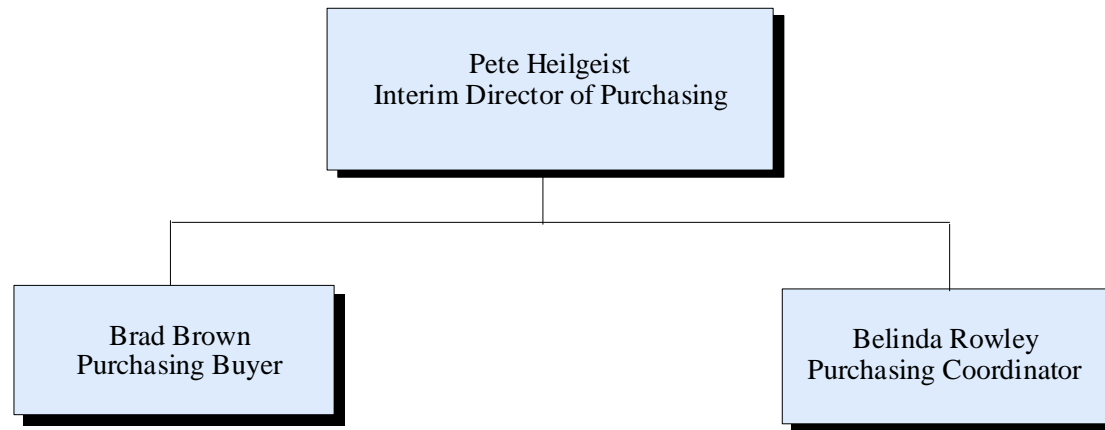
Attachment "B"



Southern Utah University

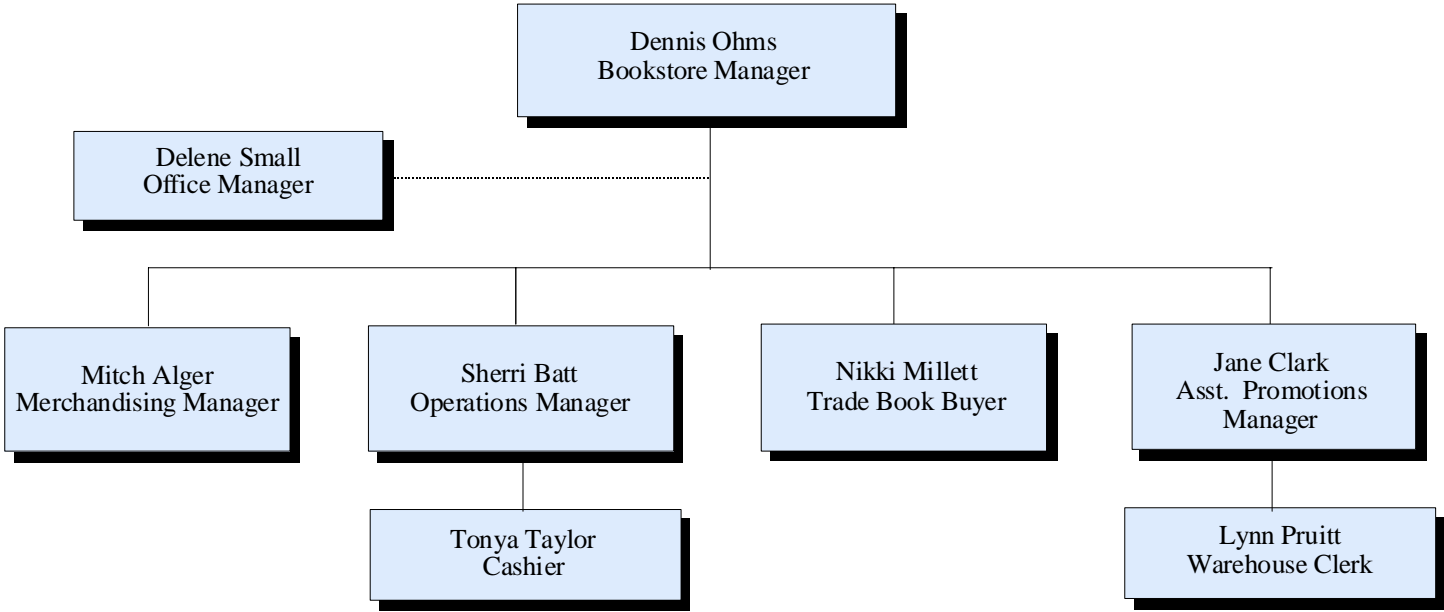
Administrative and Financial Services Organizational Chart

Attachment "C"



Southern Utah University

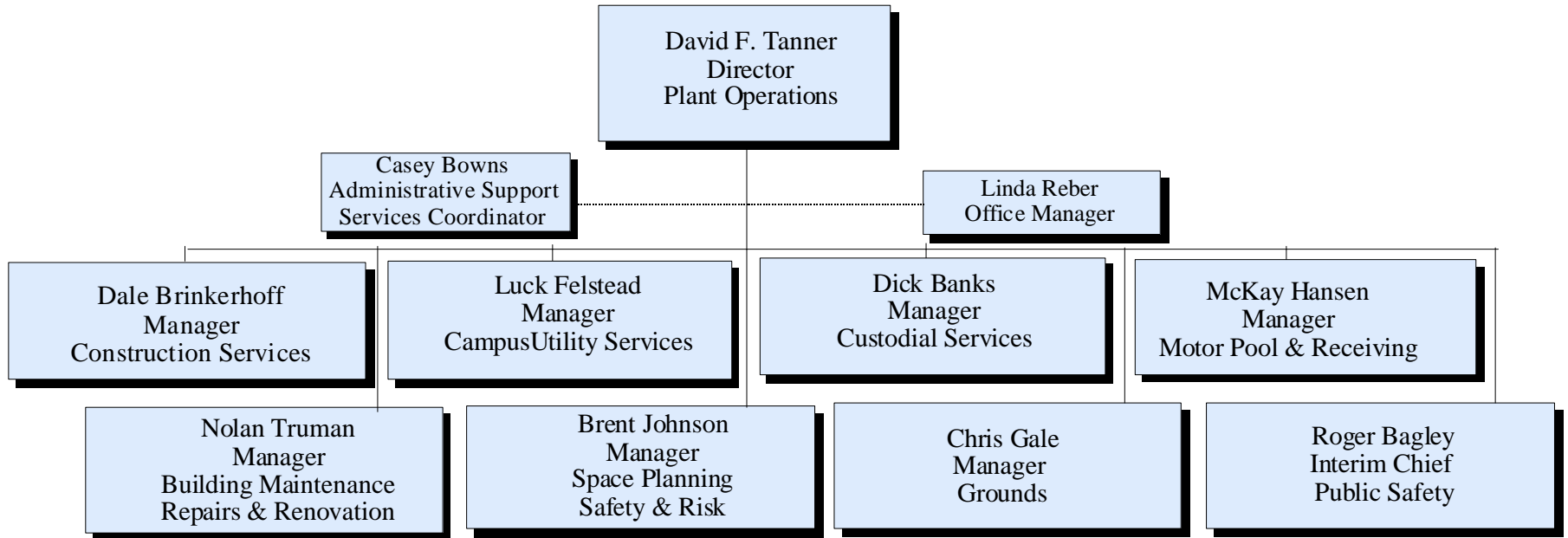
Administrative & Financial Services Organizational Chart Attachment "D"



Southern Utah University

Administrative & Financial Services Organizational Chart

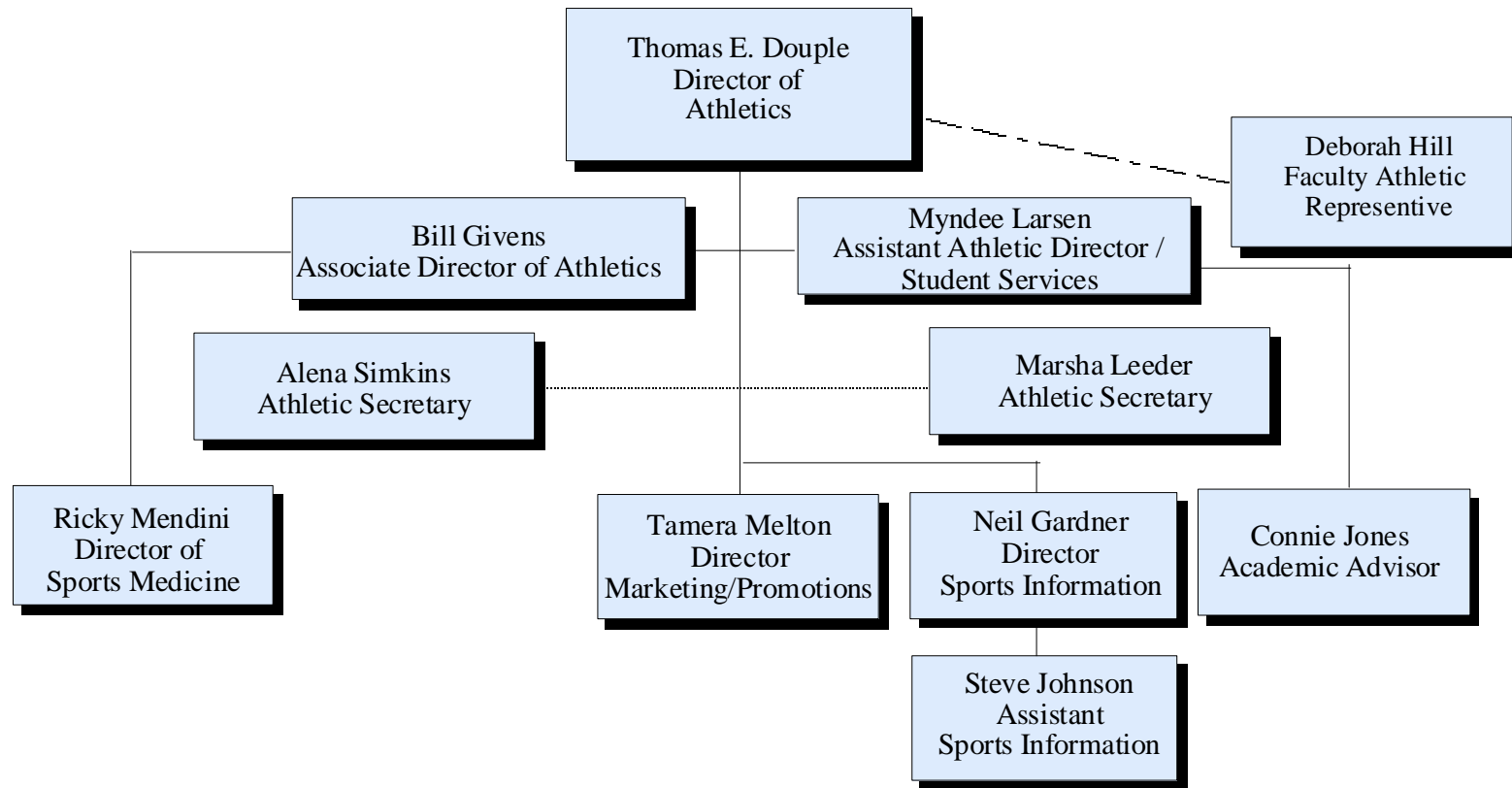
Attachment "E"



Southern Utah University

Administrative & Financial Services Organizational Chart

Attachment "F"



Southern Utah University

Administrative & Financial Services Organizational Chart

Attachment "G"

