



SUBJECT: MISSION STATEMENT

As a community of learners, Southern Utah University serves as a comprehensive regional university to encourage a lifelong love of learning, to foster academic excellence, to instill ethics and values, and to honor thought in all its finest forms. Foremost to its role and central to its disciplines are superior teaching and quality service to students. Scholarly activities and public service are fundamental to its purpose.

Within a personalized learning environment, the mission of Southern Utah University is to provide students meaningful experiences involving the mind, heart and hands, which:

- Affirm integrity, the search for the truth and respect for all people as the foundation of education;
- Develop communication, analytical, creative and information gathering skills;
- Prepare students as informed and responsible citizens and for effective roles in families and other societal organizations;
- Afford opportunities for success in students' personal and professional lives by providing service and leadership experiences in a residential campus setting;
- Enhance the economic, technological and cultural development of the communities served.

The University provides baccalaureate, applied technology, and selected graduate education. It addresses the unique needs of rural students and communities; serves as a major cultural center for Southern Utah; and creates partnerships with public and higher education, government, business, and industry.

SOUTHERN UTAH UNIVERSITY

PROFILE

January 2005

Southern Utah University established: 1897
 Public, Comprehensive, Coeducational, Masters I University
 Accreditation: Northwest Association of Colleges and Schools
 President: Steven D. Bennion
 Calendar: Semester

Enrollment:

Fall Headcount 6,672
 Fall FTE 5,246

Number of Fall Full-time Faculty: 220

Number of employees:

Contract 699
 Non-student / Non-contract 122

Dorm capacity: 700

Average age (all students): 25.3

Degree programs:

Associate's 21
 Bachelor's 57
 Master's 12

Land and Facilities:

Campus Proper Acreage 129
 Shakespearean Festival 6
 Valley farm acreage 1,032
 Mountain property 2,645
 Other property 177
 Total 3,989

Number of buildings: 74

No. of square feet in inventory: 1,431,604

Annualized FTE Student to FTE Faculty Ratio (Budget)

2003-04 Cost Study 20.35

Residency of Students:

Utah 6,111 91.6%
 Non-Utah 561 8.4%

Utah Counties:

Southern 15 counties 3,659 54.8%
 Northern 14 counties 1,736 26.0%
 Out of State Residents 716 10.7%
 Non-Utah 561 8.4%

Gender:

Male 2,905 43.5%
 Female 3,767 56.5%

Ethnicity:

Asian 112 1.7%
 Black 58 0.9%
 Hispanic 134 2.0%
 Native American 82 1.2%
 Native Hawaiian or Pacific Islander 47 0.7%
 Other 19 0.0%
 White 6,090 91.3%
 Unspecified 148 2.2%

Six-year graduation rate for 1998 cohort:

34%

Average ACT score:

21.16

2003-04 Avg. Credit Hours Taught per FTE Faculty:

12.2

2003-04 Avg. Credits Earned Toward Graduation:

150.03

2003-04 Avg. Years for a Bachelor's Degree:

4.4

2003 Graduates with Bachelor Degrees Seeking Employment:

3.7%

GENERAL OFFICERS OF ADMINISTRATION

Office of the President

President Steven D. Bennion
Assistant Attorney General/Legal Counsel D. Michael Carter

Academic Affairs

Provost Abe Harraf
Associate Provost Michael D. Richards
Assistant Provost for Information Technology Glen Pryor

Administrative and Financial Services

Vice President Gregory Stauffer
Associate Vice President Dorian Page

Advancement and Regional Services

Vice President D. Mark Barton

Student Services

Vice President Georgia Beth Thompson
Associate Vice President & Dean of Students Neal L. Cox
Assistant Vice President Dale S. Orton

Deans

Dean, Business Carl Templin
Dean, Computing, Integrated Engineering & Technology (Interim) Mikhail Bouniaev
Dean, Continuing and Professional Studies Carl Ellis
Dean, Education Bruce Barker
Dean, Humanities and Social Sciences Rodney D. Decker
Dean, Library Diana T. Graff
Dean, Performing and Visual Arts William Byrnes
Dean, Science Harold Ornes

Department Chairs

Accounting David S. Christensen
Agriculture & Nutrition Science Dan Dail
Art Eric Brown
Biology Kate Grandison
Communication Jon M. Smith
Computer Science & Information Systems Connie Nyman
Economics and Finance Rhead S. Bowman
Elementary Education Jerry Bowler
English Kay K. Cook
Foreign Languages and Humanities James W. Harrison
History and Sociology Earl Mulderink
Integrated Engineering & Technology Des Penny
Management and Marketing Alan Hamlin
Mathematics Richard Tebbs
Military Science Captain Brent Anderson
Music Bart Shanklin
Nursing Donna Lister
Physical Education (Interim) Jean Lopour
Physical Science Robert Eves
Political Science & Criminal Justice Lamar Jordan
Psychology Leslie N. Jones
Secondary Education Lee Montgomery
Theatre Arts and Dance Shauna Mendini

Accreditation of Programs
General University Accreditation: Northwest Association of Schools and Colleges.

<u>College</u>	<u>Department/Major</u>	<u>Agency</u>
Performing & Visual Arts	Music Music Education	National Association of Schools of Music
Business	Accounting Finance Management Marketing Master of Accountancy Master of Business Administration	Association of Collegiate Business Schools & Programs
Education	Elementary Education Secondary Education Special Education Early Childhood Education Education Administrative/ Supervisory License Family & Consumer Sciences Education Athletic Training	National Association of State Directors of Teacher Education and Certification National Council for Accreditation of Teacher Education Utah State Office of Education National Athletic Training Association (Candidacy)
Computing, Integrated Engineering & Technology	Automotive Technology Education	National Automotive Technicians Education Foundation/Automotive Service Excellence (NATEF/ASE) Utah State Office of Education
Science	Nursing Chemistry	Utah State Board of Nursing American Chemical Society (Candidacy)

Southern Utah University Peer Institutions

Boise State University
California State University at Dominguez Hills
Clarion University of Pennsylvania
Indiana University/Purdue University at Fort Wayne
University of North Florida
University of Northern Iowa
University of Wisconsin at Whitewater
Western Carolina University
Western Washington University
Youngstown State University

Association Memberships

- ▶ American Association of College of Nursing
- ▶ American Association of College Registrars and Admissions Officers
- ▶ American Association of Colleges for Teacher Education
- ▶ American Association of Family & Consumer Science
- ▶ American Association for Higher Education
- ▶ American Association of State Colleges and Universities
- ▶ American Association of University Women
- ▶ American Council on Education
- ▶ American Library Association
- ▶ Association for the Advancement of Collegiate Schools of Business–International (AACSB International)
- ▶ Association for Supervision and Curriculum Development
- ▶ Association of American Colleges and Universities
- ▶ Association of Collegiate Business Schools and Programs (ACBSP)
- ▶ Association of Collegiate Conference & Events Directors - International (ACCED-I)
- ▶ Association for Continuing Higher Education
- ▶ Association for Institutional Research
- ▶ The College Board
- ▶ Council for Advancement and Support of Education
- ▶ EDUCAUSE
- ▶ International Technology Education Association (ITEA)
- ▶ Microsoft Systems & Developer Network Academic Alliance (MSDNAA)
- ▶ Mountain Plains Adult Education Association
- ▶ National Academic Advising Association (NACADA)
- ▶ National Association of College and University Business Officers
- ▶ National Association of Rural Health
- ▶ National Association for Schools of Music
- ▶ National Association of Student Financial Aid Administrators
- ▶ National Athletic Training Association (Candidacy)

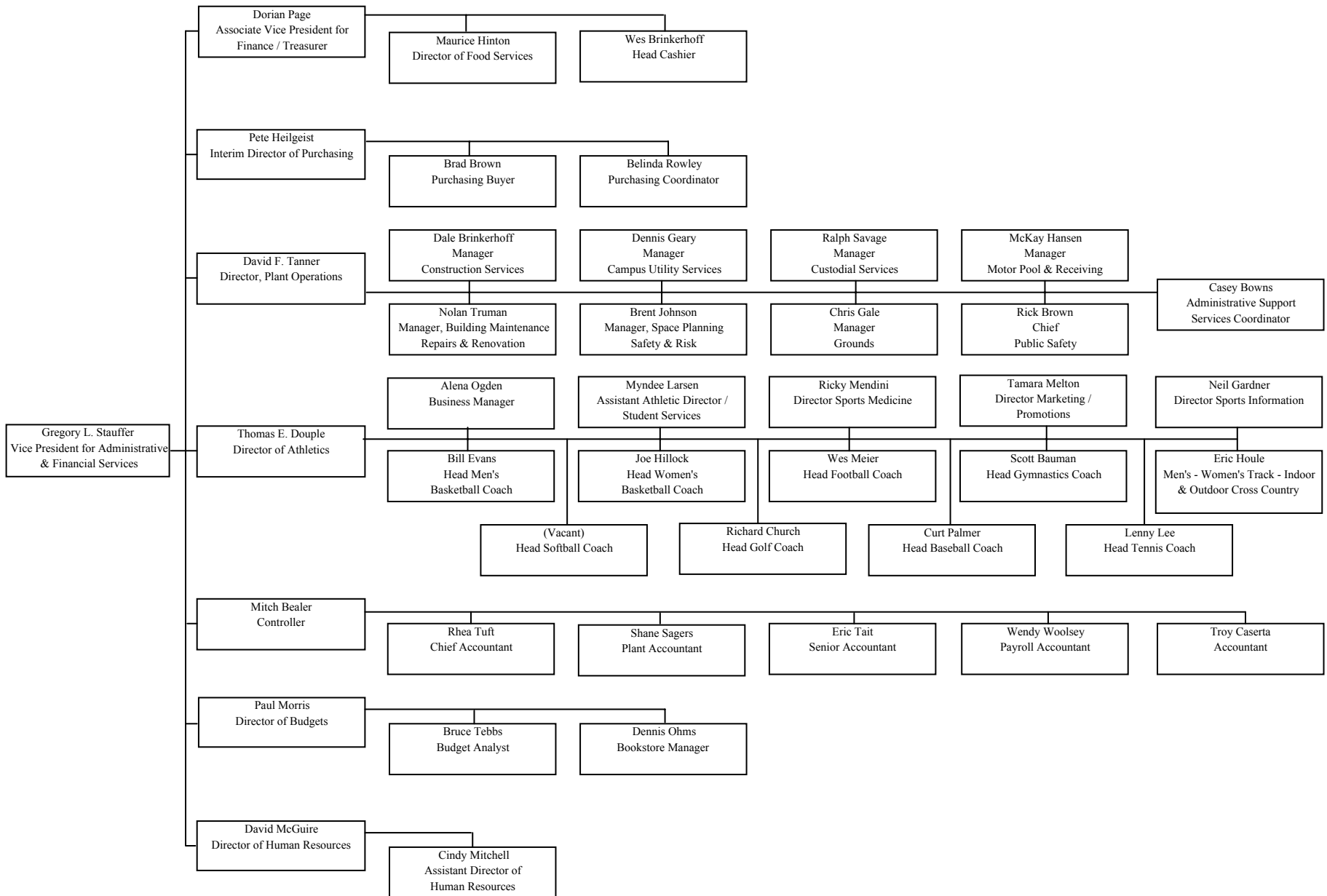
- ▶ National Business Education Association
- ▶ National Collegiate Athletic Association
- ▶ National Council for the Accreditation of Teacher Education (NCATE)
- ▶ National League for Nursing
- ▶ National Rural Education Association
- ▶ North American Association of Summer Sessions
- ▶ Novel Education Academic Partner (NEAP)
- ▶ Professional and Organizational Developmental Network in Higher Education (POD)
- ▶ Society for College and University Planning
- ▶ University Continuing Education Association (UCEA)
- ▶ Utah Academic Library Consortium
- ▶ Utah Association for Adult, Community & Continuing Education (UAACCE)
- ▶ Western Association of Summer Session Administrators
- ▶ Western Interstate Commission for Higher Education (WICHE)

* The above listing is only to be representative of the major types of memberships held by the University.

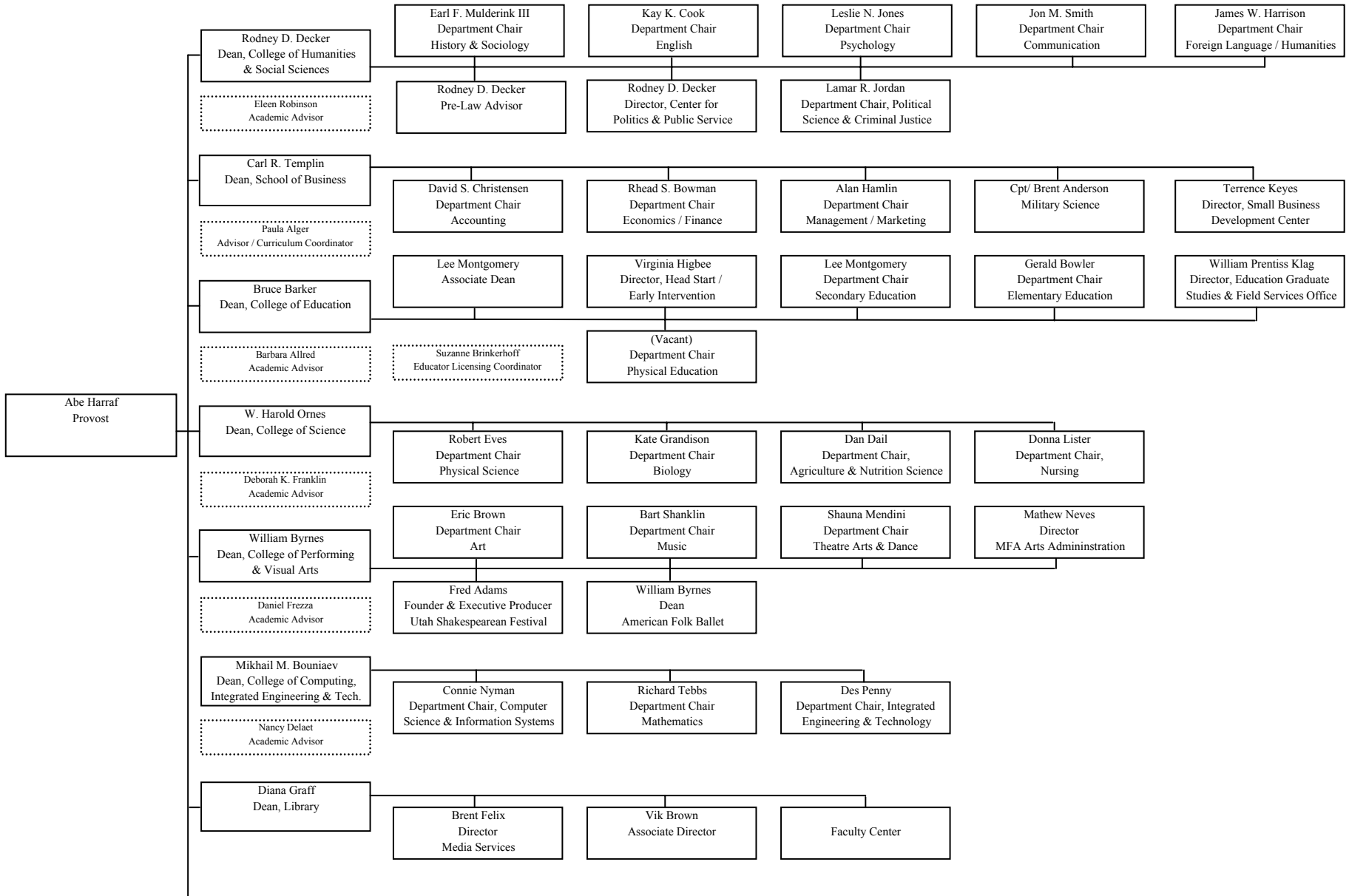
Southern Utah University Presidents

Milton Bennion	1897-1900
J. Reuben Clark, Jr.	1900-1901
Nathan T. Porter	1901-1904
George W. Decker	1904-1913
Roy F. Homer	1913-1921
Peter V. Cardon	1921-1922
J. Howard Maughan	1922-1929
Henry Oberhansley	1929-1945
H. Wayne Driggs	1945-1951
Daryl Chase	1951-1953
Royden C. Braithwaite	1955-1978
Orville D. Carnahan	1978-1981
Gerald R. Sherratt	1982-1997
Steven D. Bennion	1997-

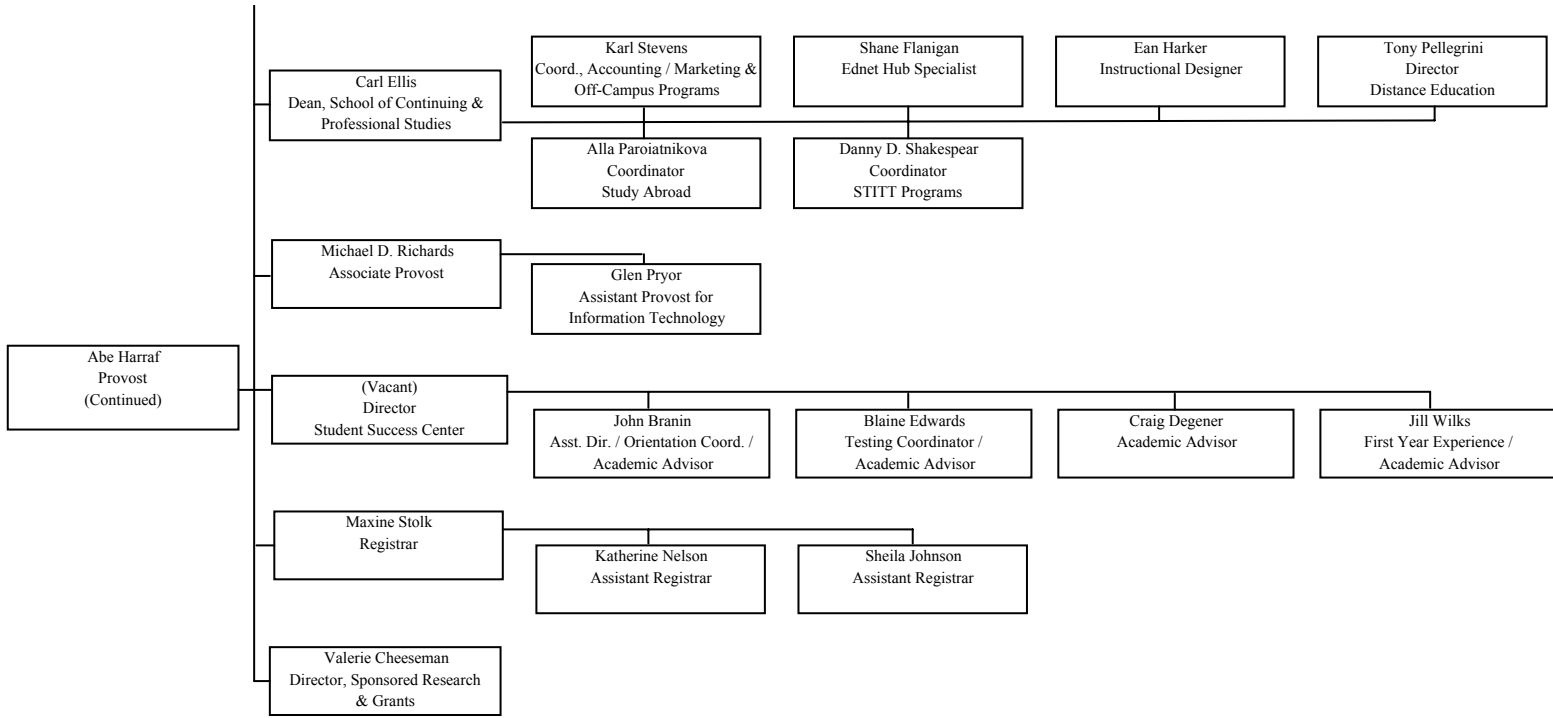
Southern Utah University
2004-05 Vice President for Administrative & Financial Services Organizational Chart
Attachment A



Southern Utah University
2004-05 Provost Organizational Chart
Attachment B



Southern Utah University
2004-05 Provost Organizational Chart
Attachment B



Southern Utah University
2004-05 Vice President for Student Services Organizational Chart
Attachment C

