

**SUU 2005 Fall Term Enrollment Statistics
Part A**

Fall Headcount Enrollment Statistics	Entry Status		Residency			Attendance		Mean	Total
	First Time	Returning	Out-of-State	In-State	Amer Ind In-State Tuition	Full-time	Part-time	Age	
Gender									
Female	1,147	2,743	479	3,387	24	2,582	1,308	25.2	3,890
Male	869	2,047	308	2,604	4	2,119	797	24.3	2,916
Unspecified	9	44	1	52	0	12	41	23.9	53
Ethnicity									
African-American	25	26	28	23	0	42	9	24.0	51
American Indian	33	60	2	63	28	78	15	24.3	93
Asian	29	60	57	32	0	76	13	23.0	89
Caucasian	1,760	4,348	589	5,519	0	4,167	1,941	24.9	6,108
Other	19	9	7	21	0	23	5	22.4	28
Unspecified	79	196	25	250	0	166	109	24.4	275
Hispanic	53	91	47	97	0	103	41	22.7	144
Pacific Islander	27	44	33	38	0	58	13	24.4	71
								24.8	6,859
Citizenship									
US Citizen	1,999	4,780	720	6,031	28	4,641	2,138	24.8	6,779
Non-Res Alien	22	46	66	2	0	66	2	22.3	68
Res Alien	2	7	0	9	0	3	6	38.0	9
Undocumented	2	1	2	1	0	3	0	19.7	3
Attendance									
Full-time	1,698	3,015	587	4,101	25	4,713	0	22.3	4,713
Part-time	327	1,819	201	1,942	3	0	2,146	30.2	2,146
Student Level									
New Freshmen	1,182	0	225	949	8	1,108	74	18.5	1,182
Other Freshmen	39	1,502	213	1,324	4	383	1,158	27.9	1,541
Sophomore	0	808	90	717	1	675	133	22.8	808
Junior	0	753	54	698	1	652	101	23.9	753
Senior	0	1,542	92	1,440	10	1,273	269	25.6	1,542
Graduate	165	229	19	375	0	113	281	34.9	394
New Transfers	639	0	95	540	4	509	130	24.1	639

**2005 Fall Term Demographic Statistics
Part B**

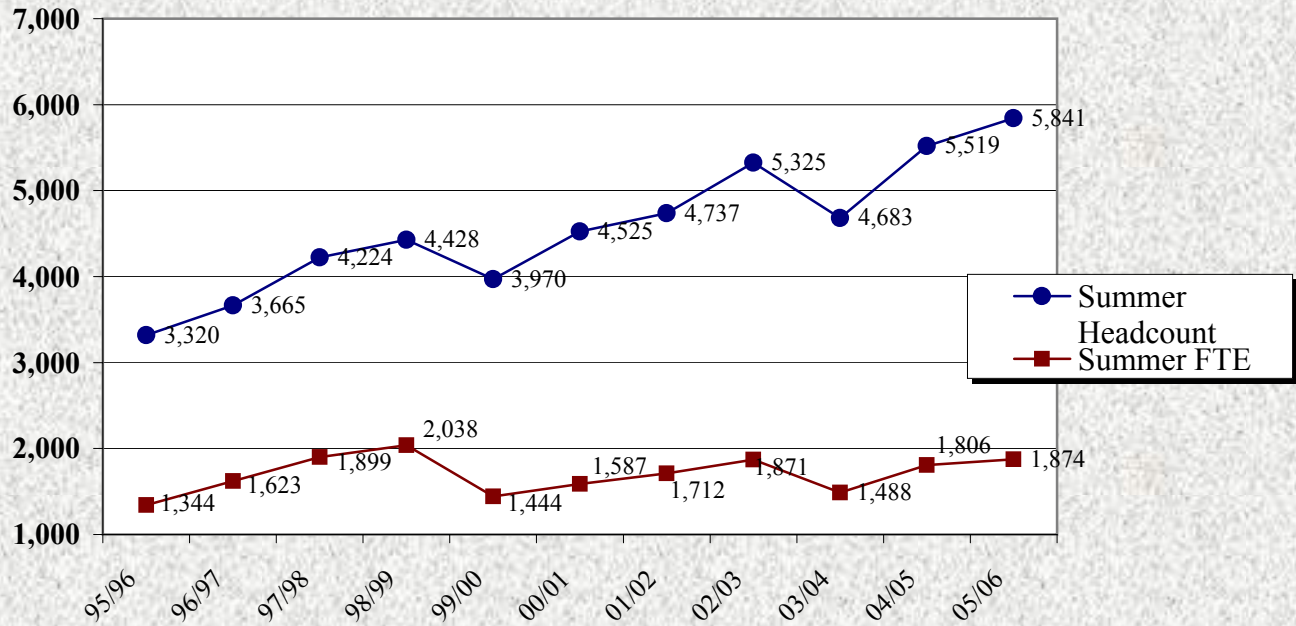
Fall Headcount Demographic Statistics	Gender			African Amer	Amer Indian	Caucasian	Other	Unspec	Hispanic	Asian	Pacific Islander	Total
	Female	Male	Unspec									
Gender												
Female	3,890			12	63	3,511	12	127	78	52	35	3,890
Male		2,916		39	30	2,584	16	108	66	37	36	2,916
Unspecified			53			13		40				53
Ethnicity												
African-American	12	39		51								51
American Indian	63	30			93							93
Caucasian	3,511	2,584	13			6,108						6,108
Other	12	16					28					28
Unspecified	127	108	40					275				275
Hispanic	78	66							144			144
Asian	52	37								89		89
Pacific Islander	35	36									71	71
												6,859
Citizenship												
US Citizen	3,849	2,877	53	49	93	6,093	26	274	137	44	63	6,779
Non-Res Alien	34	34		1		13	2	1	3	42	6	68
Res Alien	5	4		1		2			1	3	2	9
Undocumented	2	1							3			3
Attendance												
Full-time	2,582	2,119	12	42	78	4,167	23	166	103	76	58	4,713
Part-time	1,308	797	41	9	15	1,941	5	109	41	13	13	2,146
Student Level												
New Freshmen	708	473	1	15	20	1,006	13	49	37	23	19	1,182
Other Freshmen	952	566	23	6	20	1,372	2	71	37	21	12	1,541
Sophomore	490	317	1	7	7	745	0	18	20	5	6	808
Junior	411	340	2	2	7	687	1	28	9	14	5	753
Senior	798	741	3	9	25	1,381	6	56	26	19	20	1,542
Graduate	199	175	20	5	2	345	1	34	3	1	3	394
New Transfers	332	304	3	7	12	572	5	19	12	6	6	639
Mean Age	25.2	24.3	23.9	24.0	24.3	23.0	24.9	22.4	24.4	22.7	24.4	24.8

Student Demographic Summary
Fall 2003 to 2005

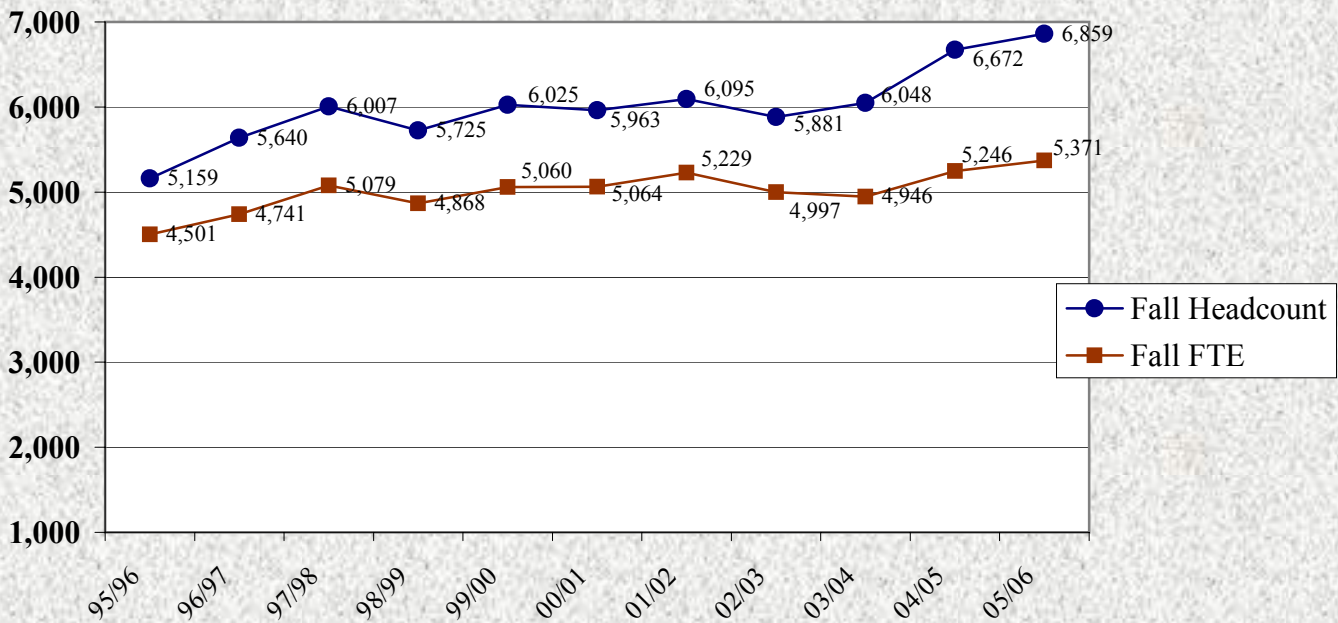
	2003 Number	2003 Percent	2004 Number	2004 Percent	2005 Number	2005 Percent
Age						
18 and under	1,136	18.8%	1,333	20.0%	1,426	20.8%
19-20	1,159	19.2%	1,137	17.0%	1,224	17.8%
21-22	1,203	19.9%	1,246	18.7%	1,192	17.4%
23-24	899	14.9%	879	13.2%	897	13.1%
25-29	736	12.2%	821	12.3%	882	12.9%
30-34	259	4.3%	319	4.8%	317	4.6%
35-39	153	2.5%	251	3.8%	243	3.5%
Over 39	503	8.3%	686	10.3%	657	9.6%
Others					21	0.3%
Totals	6,048	100.0%	6,672	100.0%	6,859	100.0%
Gender						
Male	2,731	45.2%	2,905	43.5%	2,916	42.5%
Female	3,317	54.8%	3,767	56.5%	3,890	56.7%
Unspecified					53	0.8%
Ethnic Background						
American Indian/Alaskan Native	64	1.1%	82	1.2%	93	1.4%
Asian	118	2.0%	112	1.7%	89	1.3%
Black	44	0.7%	58	0.9%	51	0.7%
Hispanic	106	1.8%	134	2.0%	144	2.1%
Pacific Islander	24	0.4%	47	0.7%	71	1.0%
Other	19	0.3%	1	0.0%	28	0.4%
White (Non-hispanic)	5,464	90.3%	6,090	91.3%	6,108	89.1%
Unspecified	208	3.4%	148	2.2%	275	4.0%
Asian or Pacific Islander	1	0.0%	0	0.0%	0	0.0%
Totals	6,048	100.0%	6,672	100.0%	6,859	100.0%
Marital Status						
Married	1,731	28.6%	2,106	31.6%	2,071	30.2%
Single	4,315	71.3%	4,561	68.4%	4,481	65.3%
Widowed	2	0.0%	5	0.1%	2	0.0%
Other					305	4.4%
Residency						
Non-Resident	551	9.1%	561	8.4%	788	11.5%
Resident	5,497	90.9%	6,111	91.6%	6,071	88.5%
Level						
Undergraduate	5,840	96.6%	6,381	95.6%	6,464	94.2%
Graduate	208	3.4%	291	4.4%	395	5.8%
Enrollment Status						
Part Time	1,672	27.6%	2,132	32.0%	2,146	31.3%
Full Time	4,376	72.4%	4,540	68.0%	4,713	68.7%
Totals	6,048	100.0%	6,672	100.0%	6,859	100.0%

Note: Percentages may not total due to rounding.

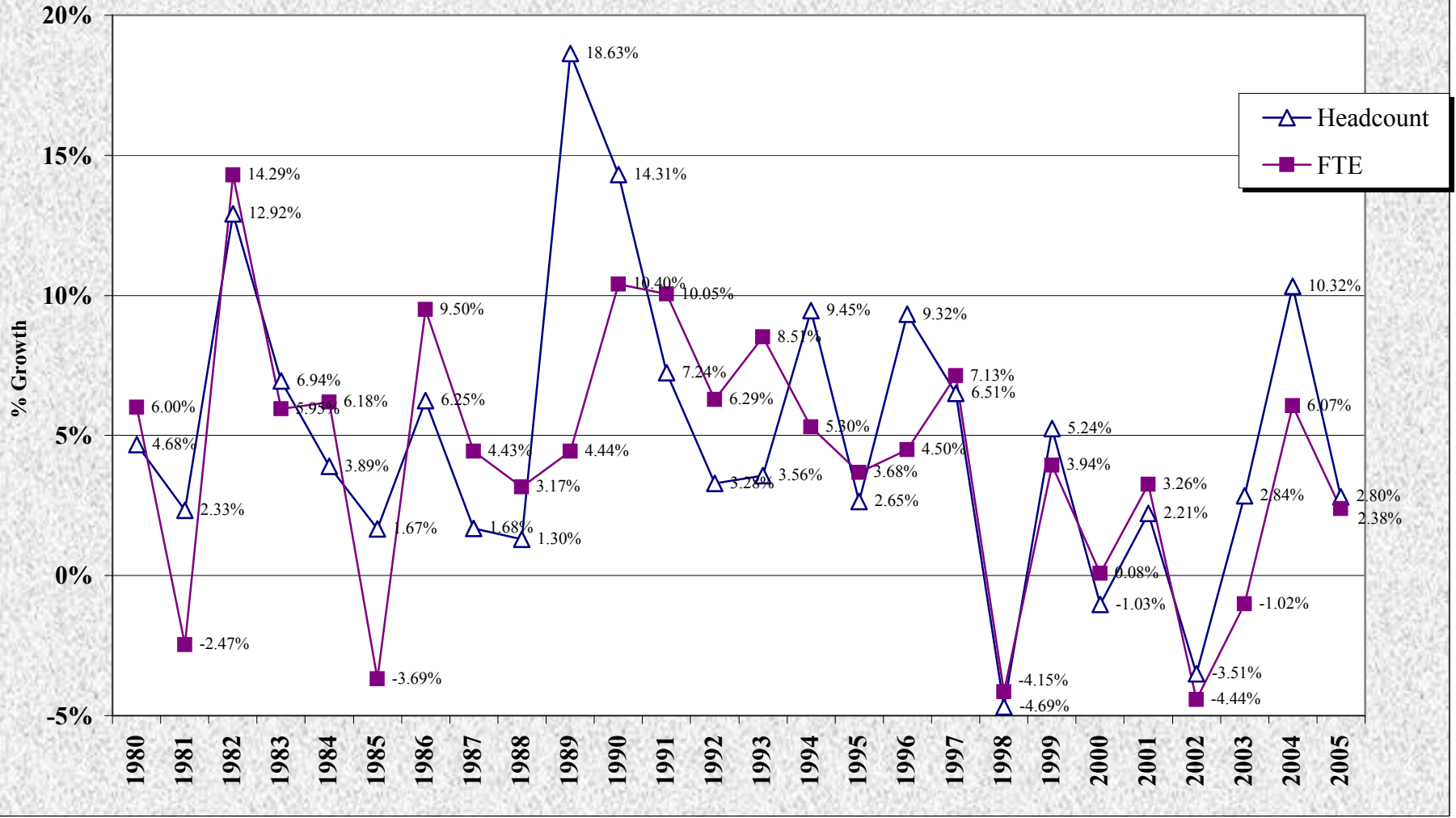
**Southern Utah University
Summer Enrollment History
1995/96 to 2005/06**



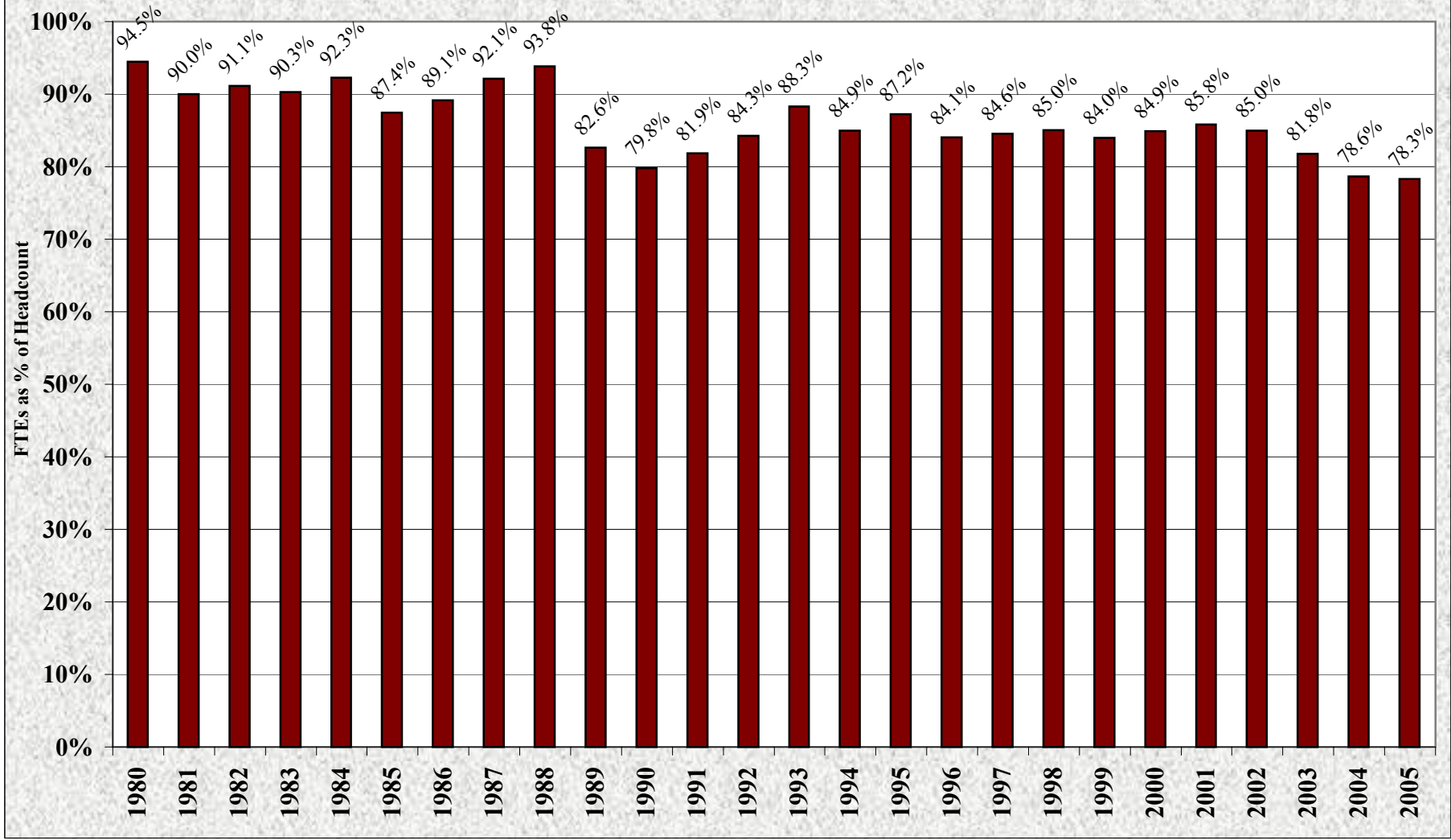
**Southern Utah University
Fall Enrollment History
1995/96 to 2005/06**



Southern Utah University Annual Growth Rates Fall Headcount & Fall FTE's Budget-Related and Self-Support Enrollments



Southern Utah University Relationship of FTEs to Fall Headcount



SUU Headcount Enrollment
1898 to 2005 (Fall)
Budget Related and Self-Support

Year	Enrollment	Year	Enrollment
1898	161	1952	403
1899	200	1953	310
1900	200	1954	416
1901	185	1955	427
1902	250	1956	505
1903	228	1957	544
1904	200	1958	706
1905	254	1959	750
1906	209	1960	772
1907	200	1961	963
1908	178	1962	935
1909	197	1963	1,004
1910	225	1964	1,256
1911	244	1965	1,635
1912	253	1966	1,676
1913	270	1967	1,797
1914	265	1968	1,830
1915	257	1969	1,765
1916	226	1970	2,037
1917	203	1971	1,927
1918	*	1972	1,789
1919	*	1973	1,620
1920	213	1974	1,860
1921	283	1975	1,883
1922	338	1976	1,912
1923	243	1977	1,884
1924	265	1978	1,798
1925	297	1979	1,966
1926	325	1980	2,058
1927	247	1981	2,106
1928	320	1982	2,378
1929	302	1983	2,543
1930	334	1984	2,642
1931	383	1985	2,589
1932	363	1986	2,821
1933	422	1987	2,941
1934	307	1988	3,436
1935	259	1989	3,629
1936	227	1990	4,135
1937	208	1991	4,293
1938	269	1992	4,434
1939	262	1993	4,592
1940	313	1994	5,026
1941	252	1995	5,159
1942	182	1996	5,640
1943	67	1997	6,007
1944	102	1998**	5,725
1945	149	1999	6,025
1946	388	2000	5,963
1947	446	2001	6,095
1948	428	2002	5,881
1949	443	2003	6,048
1950	385	2004	6,672
1951	357	2005	6,859

* Total not available

**Converted to a semester calendar

Southern Utah University Resident / Non-Resident Enrollment History
Fall 1990-91 through 2005-06

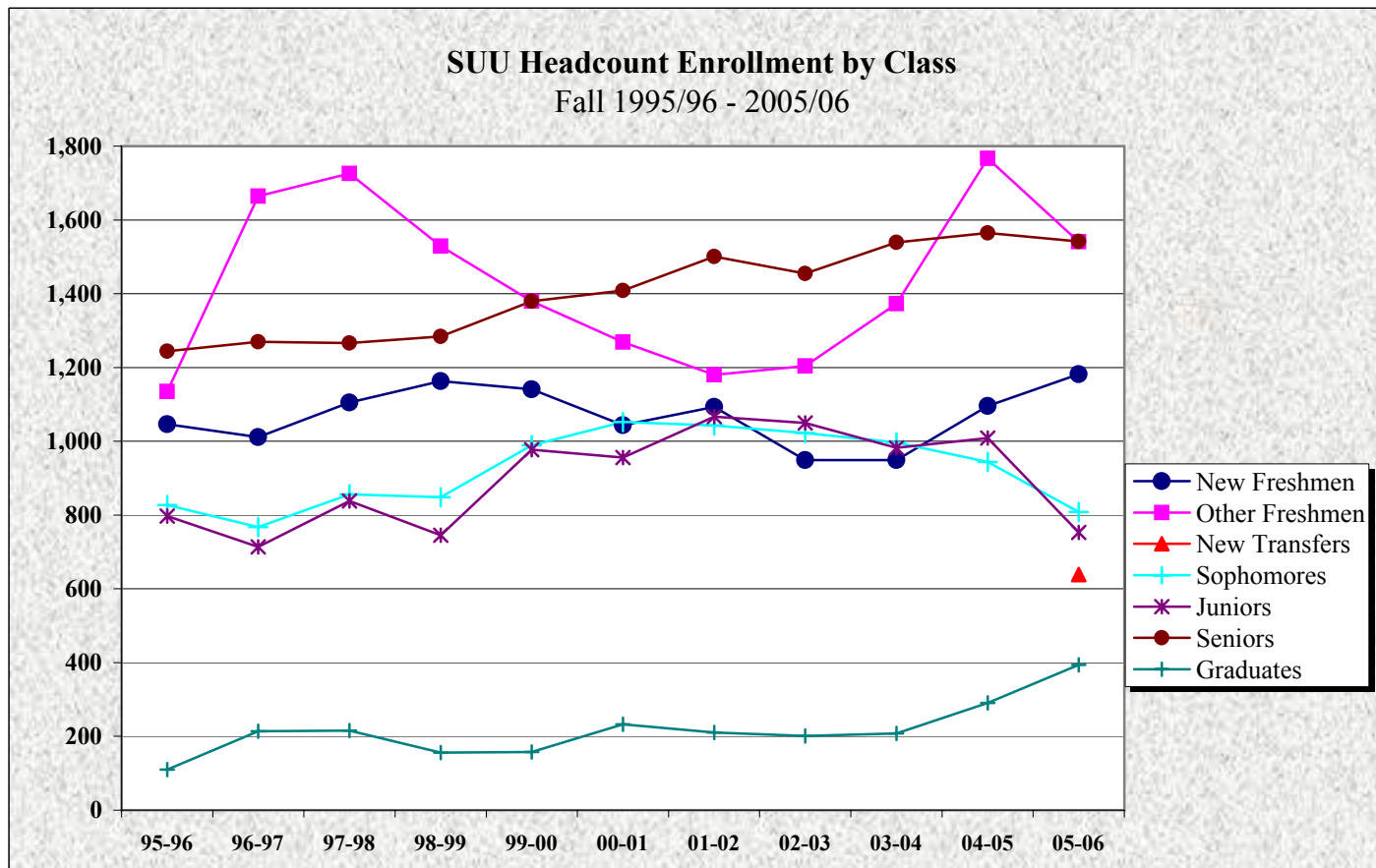
	Fall (3rd Week) Headcount			Fall (3rd Week) FTE		
	Resident	Non-Resedent	Total	Resident	Non-Resident	Total
1990-91	3,763	240	4,003	2,961	233	3,194
1991-92	3,994	299	4,293	3,224	291	3,515
1992-93	4,069	365	4,434	3,384	352	3,736
1993-94	4,229	363	4,592	3,711	343	4,054
1994-95	4,503	523	5,026	3,808	461	4,269
1995-96	4,647	512	5,159	4,037	464	4,501
1996-97	5,059	581	5,640	4,222	519	4,741
1997-98	5,359	648	6,007	4,487	592	5,079
1998-99	5,171	554	5,725	4,351	492	4,843
1999-00	5,439	586	6,025	4,508	516	5,024
2000-01	5,454	509	5,963	4,551	471	5,022
2001-02	5,569	526	6,095	4,654	518	5,172
2002-03	5,360	521	5,881	4,459	502	4,961
2003-04	5,497	551	6,048	4,439	508	4,947
2004-05	6,111	561	6,672	4,712	534	5,246
2005-06	6,071	788	6,859	4,737	634	5,371

Source: *SUU Third-Week Enrollment Report*

	End Of Term - Annualized FTE		
	Resident	Non-Resedent	Total
1990-91	3,163	276	3,439
1991-92	3,447	307	3,754
1992-93	3,533	405	3,938
1993-94	3,932	420	4,352
1994-95	4,092	491	4,583
1995-96	4,319	488	4,807
1996-97	4,611	542	5,153
1997-98	5,033	613	5,646
1998-99	5,189	542	5,731
1999-00	5,325	571	5,896
2000-01	5,450	528	5,978
2001-02	5,577	557	6,134
2002-03	5,327	538	5,865
2003-04	5106	540	5,646
2004-05	5588	567	6,155

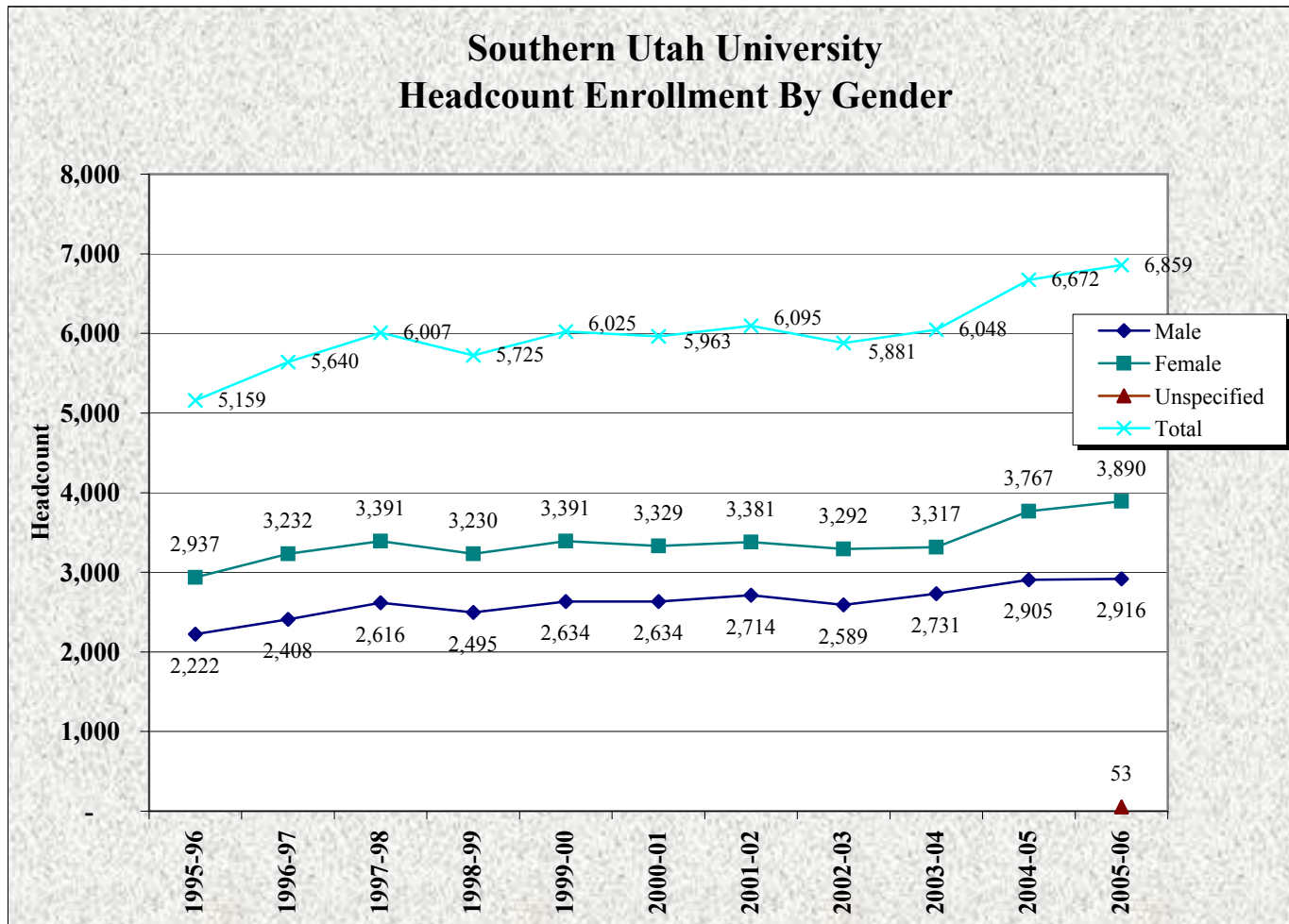
Source: *SUU End of Term Enrollment Report*

	<u>95-96</u>	<u>96-97</u>	<u>97-98</u>	<u>98-99</u>	<u>99-00</u>	<u>00-01</u>	<u>01-02</u>	<u>02-03</u>	<u>03-04</u>	<u>04-05</u>	<u>05-06</u>
New Freshmen	1,046	1,011	1,105	1,163	1,141	1,044	1,093	949	949	1,096	1,182
Other Freshmen	1,135	1,664	1,726	1,529	1,380	1,269	1,180	1,204	1,373	1,767	1,541
New Transfers											639
Sophomores	827	767	856	848	989	1,052	1,043	1,022	997	944	808
Juniors	797	714	838	745	977	956	1,067	1,050	982	1,009	753
Seniors	1,244	1,270	1,266	1,284	1,380	1,409	1,501	1,455	1,539	1,565	1,542
Graduates	110	214	216	156	158	233	211	201	208	291	394
Total	5,159	5,640	6,007	5,725	6,025	5,963	6,095	5,881	6,048	6,672	6,859

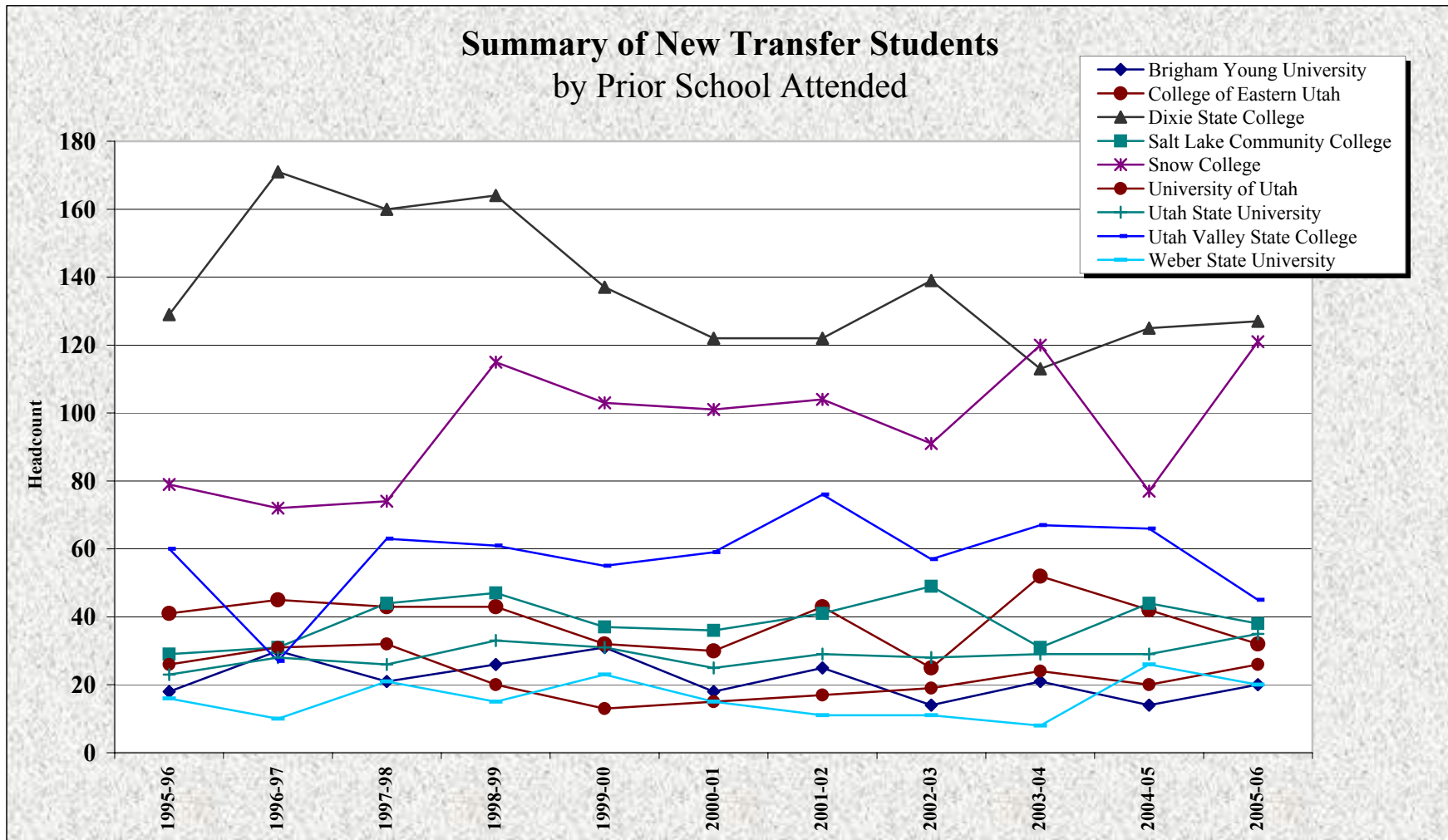


**Southern Utah University
Headcount Enrollment By Gender**

	1995-96	1996-97	1997-98	1998-99	1999-00	2000-01	2001-02	2002-03	2003-04	2004-05	2005-06
Male	2,222	2,408	2,616	2,495	2,634	2,634	2,714	2,589	2,731	2,905	2,916
Female	2,937	3,232	3,391	3,230	3,391	3,329	3,381	3,292	3,317	3,767	3,890
Unspecified											53
Total	5,159	5,640	6,007	5,725	6,025	5,963	6,095	5,881	6,048	6,672	6,859



Prior School	1995-96	1996-97	1997-98	1998-99	1999-00	2000-01	2001-02	2002-03	2003-04	2004-05	2005-06
Brigham Young University	18	30	21	26	31	18	25	14	21	14	20
College of Eastern Utah	41	45	43	43	32	30	43	25	52	42	32
Dixie State College	129	171	160	164	137	122	122	139	113	125	127
Salt Lake Community College	29	31	44	47	37	36	41	49	31	44	38
Snow College	79	72	74	115	103	101	104	91	120	77	121
University of Utah	26	31	32	20	13	15	17	19	24	20	26
Utah State University	23	28	26	33	31	25	29	28	29	29	35
Utah Valley State College	60	27	63	61	55	59	76	57	67	66	45
Weber State University	16	10	21	15	23	15	11	11	8	26	20
Total	421	445	484	524	462	421	468	433	465	443	464



**Summary of New Freshmen
by Utah High School Attended
2001-02 to 2005-06 (Fall)**

Institution Name	Institution State	2001-02	2002-03	2003-04	2004-05	2005-06
Alpine Life & Learning Center	UT		0	1	1	1
Alta High School	UT	16	8	7	19	12
Altamont High School	UT	4	0	0	2	
American Fork High School	UT	5	1	14	10	10
Aspen Ranch School	UT			1		
Bear River High School	UT	8	6	4	3	2
Beaver High School	UT	15	12	6	10	14
Ben Lomond High School	UT	1	0	0	5	
Big Water School	UT		0	0		2
Bingham High School	UT	11	22	7	9	20
Bonneville High School	UT	2	2	7	2	2
Bountiful High School	UT	6	3	10	8	7
Box Elder High School	UT	15	5	2	8	8
Brighton High School	UT	7	5	21	7	14
Browning Academy	UT		0	0		
Bryce Valley High School	UT	12	5	4	5	2
Cache High School	UT		0	0	1	
Canyon View High School	UT	93	64	64	71	69
Carbon High School	UT	3	2	0	4	2
Cedar City High School	UT	103	103	95	102	73
Cedar Mountain Academy	UT	0	2	0	2	
Cedar Ridge High School	UT		0	0	1	
Central High School	UT		0	1		
Christian Heritage School	UT			2		
Clearfield High School	UT	1	4	1	7	11
Copper Hills High School	UT	17	7	7	5	9
Cottonwood High School	UT	10	4	9	3	10
Cyprus High School	UT	7	2	7	8	5
Davis High School	UT	12	13	6	10	10
Delta High School	UT	34	23	26	20	18
Dixie High School	UT	1	3	6	8	13
Duchesne High School	UT	1	0	0	2	
Dugway High School	UT		0	0		1
East Carbon High School	UT		1	0		
East High School	UT	5	2	2	4	3
Emery County High School	UT	6	3	0	6	3
Enterprise High School	UT	10	11	11	3	2
Escalante High School	UT	5	2	5	3	3
Eskdale High School	UT				1	4
Fremont High School	UT	6	5	2	5	7
Garfield School	UT			1		
Grand County High School	UT	6	6	4	5	6
Granger High School	UT	8	6	5	8	5
Granite High School	UT	1	1	3	3	3
Grantsville High School	UT	6	4	0		13
Green River High School	UT		0	1	1	
Gunnison Valley High School	UT	7	7	5	8	6
Highland High School	UT	4	3	7	2	3
Hillcrest High School	UT	7	8	0	13	12
Horizonte Inst & Train Center	UT		0	0		
Hunter High School	UT	8	11	11	7	6

**Summary of New Freshmen
by Utah High School Attended
2001-02 to 2005-06 (Fall)**

Institution Name	Institution State	2001-02	2002-03	2003-04	2004-05	2005-06
Hurricane High School	UT	11	25	9	13	10
Independence High School	UT		0	0		
Intermountain Christian Academy	UT		0	0		
Jordan High School	UT	17	19	9	12	14
Juab High School	UT	8	2	7	9	7
Juan Diego High School	UT	0	1	2	5	3
Judge Memorial High School	UT		0	1		2
Kanab High School	UT	11	10	18	16	16
Kearns High School	UT	4	6	2	3	4
Layton High School	UT	7	4	7	14	15
Lehi High School	UT	6	7	5	5	15
Logan High School	UT	1	2	1	3	1
Lone Peak High School	UT	16	14	12	22	8
Manila High School	UT		1	0		
Manti High School	UT		2	2	1	4
Master Academy	UT		0	0		
Meridian School	UT		1	0		
Milford High School	UT	2	9	6	7	2
Millard High School	UT	15	10	6	14	16
Millcreek High School	UT		0	0	1	1
Monticello High School	UT	4	4	3	7	3
Monument Valley High School	UT				1	2
Morgan High School	UT	1	0	1	1	5
Mountain Crest High School	UT	7	4	6	6	1
Mountain View High School	UT	7	0	4	11	13
Murray High School	UT	8	7	8	9	5
Navajo Mountain High School	UT	0	1	0		
North Sanpete High School	UT	1	1	3	6	5
North Sevier High School	UT	3	11	2	6	7
North Summit High School	UT	1	6	1	1	1
Northridge High School	UT	9	3	7	2	6
Ogden High School	UT	1	2	0	2	2
Olympus High School	UT	4	9	7	3	7
Orem High School	UT	7	6	2	6	7
Panguitch High School	UT	7	4	9	16	5
Park City High School	UT	1	0	3	1	5
Parowan High School	UT	17	28	12	11	16
Payson High School	UT	11	7	6	15	13
Pine View High School	UT	11	17	10	7	17
Piute High School	UT	3	7	5	6	1
Pleasant Grove High School	UT	11	6	7	17	8
Provo High School	UT	2	3	3	2	1
Rich High School	UT	1	2	3		
Richfield High School	UT	26	13	14	13	16
Riverton High School	UT	8	11	17	17	17
Rowland Hall - St Mark's School	UT				1	
Roy High School	UT	3	1	0	2	3
Saint Josephs High School	UT	1	0	0		
San Juan High School	UT	3	3	8	8	2
Shiloah Valley Christian Schools	UT	2	0	0		
Sky View High School	UT	5	2	4	6	7

**Summary of New Freshmen
by Utah High School Attended
2001-02 to 2005-06 (Fall)**

Institution Name	Institution State	2001-02	2002-03	2003-04	2004-05	2005-06
Skyline High School	UT	9	3	8	11	12
Snow Canyon High School	UT	11	6	11	13	15
Sorenson's Ranch School Inc.	UT		0	1		
South Sevier High School	UT	9	14	13	5	7
South Summit High School	UT	3	2	0	1	
Southwest Education Academy	UT					3
Spanish Fork High School	UT	3	9	7	19	26
Springville High School	UT	11	4	15	17	18
Taylorville High School	UT	8	11	6	4	6
Timpanogas High School	UT	10	2	1	9	15
Timpview High School	UT	2	4	5	2	3
Tintic High School	UT		1	1	1	1
Tooele High School	UT	10	11	15	8	13
Tuacahn High School for Per Arts	UT	2	3	3	4	5
Uintah High School	UT	6	3	5	6	4
Union High School	UT	8	4	4		4
Valley High School	UT	2	4	1	9	3
Viewmont High School	UT	10	7	4	6	10
Wasatch Academy	UT	1	1	1	23	
Wasatch High School	UT	7	18	12		16
Wayne High School	UT	5	6	2	2	4
Weber High School	UT	4	5	0	2	10
Wendover High School	UT		0	0	3	
West Desert High School	UT		1	1		1
West High School	UT		0	1	2	
West Jordan High School	UT	11	1	10	11	18
West Ridge Academy	UT					1
Woods Cross High School	UT	8	4	6	7	4
Unknown	UT	1		0		
Total	UT	867	761	730	875	883
States Other Than Utah		189	217	201	190	283
General Education Diploma		13	9	18	31	16
Total		1,069	987	949	1,096	1,182

High School Graduates
(From Previous 12 Months)
From Nine Southern Utah Counties
Going on to SUU (Fall)
2003 to 2005

County	Total Graduates			Enrolled at SUU			Percent		
	2003	2004	2005	2003	2004	2005	2003	2004	2005
Beaver									
High School(s)									
Beaver	71	58	72	6	8	14	8%	14%	19%
Milford	26	27	27	5	8	2	19%	30%	7%
Garfield									
High School(s)									
Bryce Valley	20	21	18	3	4	1	15%	19%	6%
Escalante	18	18	10	4	3	2	22%	17%	20%
Panguitch	49	41	39	5	8	5	10%	20%	13%
Iron									
High School(s)									
Canyon View	189	182	195	56	53	54	30%	29%	28%
Cedar City	173	173	187	74	80	57	43%	46%	30%
Parowan	54	65	48	9	10	13	17%	15%	27%
Kane									
High School(s)									
Kanab	61	51	50	12	15	14	20%	29%	28%
Valley	28	26	26	1	6	2	4%	23%	8%
Washington									
High School(s)									
Dixie	255	245	245	6	6	11	2%	2%	4%
Enterprise	50	50	50	10	2	2	20%	4%	4%
Hurricane	205	181	171	8	10	8	4%	6%	5%
Pine View	325	365	324	10	7	17	3%	2%	5%
Snow Canyon	341	340	284	11	12	12	3%	4%	4%
Wayne									
High School(s)									
Wayne	37	41	48	1	2	4	3%	5%	8%
Millard									
High School(s)									
Delta	152	187	136	20	14	16	13%	7%	12%
Millard	75	72	80	3	11	16	4%	15%	20%
Piute									
High School(s)									
Piute	40	21	31	5	5	1	13%	24%	3%
Sevier									
High School(s)									
North Sevier	63	62	54	2	6	7	3%	10%	13%
Richfield	143	141	131	9	10	13	6%	7%	10%
South Sevier	99	83	92	11	3	4	11%	4%	4%

**Top Utah Feeder High Schools to SUU
for New Freshmen 2003 - 2005**

2003		2004		2005	
Cedar	95	Cedar	102	Cedar	73
Canyon View	64	Canyon View	71	Canyon View	69
Delta	26	Wasatch	23	Spanish Fork	26
Brighton	21	Lone Peak	22	Bingham	20
Kanab	18	Delta	20	Delta	18
Riverton	17	Alta	19	Springville	18
Springville	15	Spanish Fork	19	West Jordan	18
Tooele	15	Pleasant Grove	17	Payson	17
American Fork	14	Riverton	17	Pine View	17
Richfield	14	Springville	17	Riverton	17
South Sevier	13	Kanab	16	Kanab	16
Lone Peak	12	Panguitch	16	Millard	16
Parowan	12	Payson	15	Mountain View	16
Wasatch	12	Layton	14	Parowan	16
Enterprise	11	Millard	14	Richfield	16
Hunter	11	Hillcrest	13	Wasatch	16
Snow Canyon	11	Hurricane	13	Layton	15
		Richfield	13	Lehi	15
		Snow	13	Snow Canyon	15
		Jordan	12	Timpanogos	15
		Mountain View	12	Beaver	14
				Brighton	14
				Jordan	14

Utah Counties Providing Greatest Percentage of New Freshmen Enrollment (Fall) 2001 - 2005

	2001	2002	2003	2004	2005
Iron	21%	24%	23%	21%	17%
Salt Lake	16%	15%	17%	15%	16%
Utah	8%	7%	9%	13%	12%
Washington	4%	7%	5%	5%	6%
Davis	5%	4%	4%	5%	5%
Millard	5%	3%	3%	3%	3%
Tooele	2%	2%	2%	1%	2%
Sevier	3%	4%	3%	2%	2%
Weber	2%	2%	1%	2%	2%
Kane	1%	1%	2%	2%	2%
Beaver	2%	2%	1%	2%	2%
Wasatch	1%	2%	1%	2%	1%
Sanpete	1%	1%	1%	1%	1%
Box Elder	2%	1%	1%	1%	1%
San Juan	1%	1%	1%	2%	1%
Cache	1%	1%	1%	2%	1%

All Students by Class and Gender
2001-02 to 2005-06 (Fall)

Class	2001-02	%	2002-03	%	2003-04	%	2004-05	%	2005-06	%
New Freshmen *										
Male	409		382		402		439		473	
Female	684		567		547		657		708	
Unspecified									1	
Total	1,093	17.93%	949	16.14%	949	15.69%	1,096	16.43%	1,182	17.23%
Other Freshmen										
Male	543		511		580		688		566	
Female	637		693		793		1,079		952	
Unspecified									23	
Total	1,180	19.36%	1,204	20.47%	1,373	22.70%	1,767	26.48%	1,541	22.47%
New Transfers										
Male									304	
Female									332	
Unspecified									3	
Total									639	9.32%
Sophomores										
Male	457		434		448		425		317	
Female	586		588		549		519		490	
Unspecified									1	
Total	1,043	17.11%	1,022	17.38%	997	16.48%	944	14.15%	808	11.78%
Juniors										
Male	471		459		467		473		340	
Female	596		591		515		536		411	
Unspecified									2	
Total	1,067	17.51%	1,050	17.85%	982	16.24%	1,009	15.12%	753	10.98%
Seniors										
Male	721		688		726		749		741	
Female	780		767		813		816		798	
Unspecified									3	
Total	1,501	24.63%	1,455	24.74%	1,539	25.45%	1,565	23.46%	1,542	22.48%
Graduate										
Male	113		115		108		131		175	
Female	98		86		100		160		199	
Unspecified									20	
Total	211	3.46%	201	3.42%	208	3.44%	291	4.36%	394	5.74%
Total										
Male	2,714		2,589	44.02%	2,731	45.16%	2,905	43.54%	2,916	42.51%
Female	3,381		3,292	55.98%	3,317	54.84%	3,767	56.46%	3,890	56.71%
Unspecified									53	0.77%
Total	6,095	100.00%	5,881	100.00%	6,048	100.00%	6,672	100.00%	6,859	100.00%

All Students by Age and Gender
2001-02 to 2005-06 (Fall)

Age Group		2001-02	%	2002-03	%	2003-04	%	2004-05	%	2005-06	%
18 and under	Male	434		416		426		518		523	
	Female	835		728		710		815		897	
	Unspecified									6	
	Total	1,269	20.82%	1,144	19.45%	1,136	18.78%	1,333	19.98%	1,426	20.79%
19 - 20	Male	260		254		282		284		291	
	Female	973		957		877		853		930	
	Unspecified									3	
	Total	1,233	20.23%	1,211	20.59%	1,159	19.16%	1,137	17.04%	1,224	17.85%
21 - 22	Male	630		581		585		614		566	
	Female	689		653		618		632		623	
	Unspecified									3	
	Total	1,319	21.64%	1,234	20.98%	1,203	19.89%	1,246	18.68%	1,192	17.38%
23 - 24	Male	662		602		616		579		590	
	Female	263		268		283		300		303	
	Unspecified									4	
	Total	925	15.18%	870	14.79%	899	14.86%	879	13.17%	897	13.08%
25 - 29	Male	466		436		493		537		560	
	Female	202		212		243		284		316	
	Unspecified									6	
	Total	668	10.96%	648	11.02%	736	12.17%	821	12.31%	882	12.86%
30 - 34	Male	111		118		128		133		141	
	Female	100		110		131		186		174	
	Unspecified									2	
	Total	211	3.46%	228	3.88%	259	4.28%	319	4.78%	317	4.62%
35 - 39	Male	55		63		63		81		85	
	Female	72		75		90		170		156	
	Unspecified									2	
	Total	127	2.08%	138	2.35%	153	2.53%	251	3.76%	243	3.54%
Over 39	Male	96		119		138		159		158	
	Female	247		289		365		527		485	
	Unspecified									14	
	Total	343	5.63%	408	6.94%	503	8.32%	686	10.28%	657	9.58%
Others	Male									2	
	Female									6	
	Unspecified									13	
	Total									21	0.31%
Total	Male	2,714		2,589		2,731		2,905		2,916	
	Female	3,381		3,292		3,317		3,767		3,890	
	Unspecified									53	
	Total	6,095	100.00%	5,881	100.00%	6,048	100.00%	6,672	100.00%	6,859	100.00%

**New Freshmen by Age and Gender
2001-02 to 2005-06 (Fall)**

Age Group		2001-02	%	2002-03	%	2003-04	%	2004-05	%	2005-06	%
18 and under	Male	268		253		259		271		306	
	Female	599		488		451		529		594	
	Unspecified										
	Total	867	79.32%	741	78.08%	710	74.82%	800	72.99%	900	76.14%
19 - 20	Male	64		58		55		76		86	
	Female	68		63		64		91		101	
	Unspecified										
	Total	132	12.08%	121	12.75%	119	12.54%	167	15.24%	187	15.82%
21 - 22	Male	65		59		64		63		76	
	Female	8		9		8		8		8	
	Unspecified									1	
	Total	73	6.68%	68	7.17%	72	7.59%	71	6.48%	85	7.19%
23 - 24	Male	11		10		10		9		3	
	Female	2		3		5		6		3	
	Unspecified										
	Total	13	1.19%	13	1.37%	15	1.58%	15	1.37%	6	0.51%
25 - 29	Male	1		1		9		13		0	
	Female	5		1		10		11		1	
	Unspecified										
	Total	6	0.55%	2	0.21%	19	2.00%	24	2.19%	1	0.08%
30 - 34	Male			0		3		2		1	
	Female	1		1		3		3		0	
	Unspecified										
	Total	1	0.09%	1	0.11%	6	0.63%	5	0.46%	1	0.08%
35 - 39	Male			0		0		4		1	
	Female			0		1		4		1	
	Unspecified										
	Total	0	0.00%	0	0.00%	1	0.11%	8	0.73%	2	0.17%
Over 39	Male			1		2		1			
	Female	1		2		5		5			
	Unspecified										
	Total	1	0.09%	3	0.32%	7	0.74%	6	0.55%	0	0.00%
Total	Male	409		382		402		439		473	
	Female	684		567		547		657		708	
	Unspecified									1	
	Total	1,093	100.00%	949	100.00%	949	100.00%	1,096	100.00%	1,182	100.00%

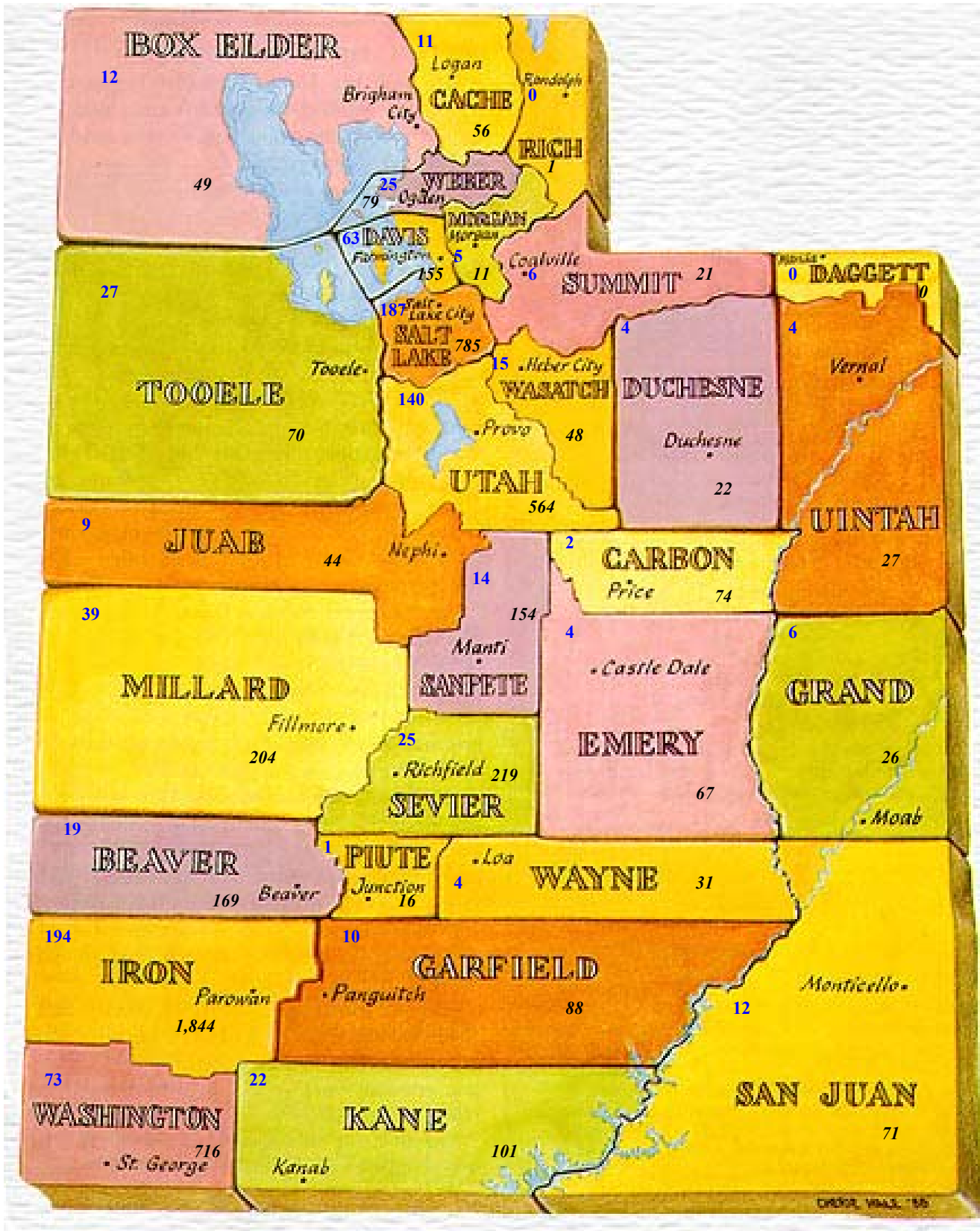
**All Students by County of Origin
2001-02 to 2005-06 (Fall)**

County	2001-02	2002-03	2003-04	2004-05	2005-06
Beaver	173	162	146	143	169
Box Elder	51	54	40	61	49
Cache	41	42	36	48	56
Carbon	44	41	47	48	74
Daggett	1	2	1		
Davis	144	127	117	146	155
Duchesne	46	38	23	17	22
Emery	66	58	75	73	67
Garfield	139	115	119	125	88
Grand	31	27	41	31	26
Iron	1,622	1,681	1,698	1,746	1,844
Juab	39	33	39	31	44
Kane	109	97	115	107	101
Millard	193	146	145	151	204
Morgan	7	8	3	3	11
Piute	29	19	23	20	16
Rich	4	4	6		1
Salt Lake	635	603	595	722	785
San Juan	62	69	57	80	71
Sanpete	129	121	128	163	154
Sevier	229	248	240	258	219
Summit	14	18	15	13	21
Tooele	73	58	64	72	70
Uintah	30	24	27	23	27
Utah	422	365	438	513	564
Wasatch	19	33	32	45	48
Washington	519	517	547	639	716
Wayne	49	40	49	44	31
Weber	64	58	55	73	79
Out of State - Resident	585	552	576	716	359
Total Utah Residents	5,569	5,360	5,497	6,111	6,071
Total Nonresidents	526	521	551	561	788
Total Students	6,095	5,881	6,048	6,672	6,859

Entering Freshmen by County of Origin
2001-02 to 2005-06 (Fall)

County	2001-02	2002-03	2003-04	2004-05	2005-06
Beaver	21	22	13	19	19
Box Elder	22	9	6	13	12
Cache	12	8	10	17	11
Carbon	3	4	0	3	2
Daggett	0	1	0		
Davis	51	37	37	52	63
Duchesne	13	4	4	4	4
Emery	6	2	1	6	4
Garfield	20	11	20	21	10
Grand	6	6	4	5	6
Iron	229	228	221	230	194
Juab	7	3	8	8	9
Kane	14	14	19	23	22
Millard	51	31	28	30	39
Morgan	1	0	1	1	5
Piute	8	3	5	4	1
Rich	1	2	3		
Salt Lake County	172	142	159	165	187
San Juan	7	6	11	16	12
Sanpete	10	11	12	12	14
Sevier	36	38	25	25	25
Summit	5	9	3	4	6
Tooele	18	15	16	10	27
Uintah	6	3	5	6	4
Utah County	88	70	82	137	140
Wasatch	6	18	12	22	15
Washington	44	62	47	58	73
Wayne	6	7	3	2	4
Weber	19	15	11	20	25
Out of State - Resident	29	27	21	23	24
Total Utah Residents	911	808	787	936	957
Total Non-Resident	182	141	162	160	225
Total	1,093	949	949	1,096	1,182

Southern Utah University Enrollment by Utah County of Origin, Fall 2005



NOTE: New Freshmen Enrollment – Bold

Total SUU Enrollment – Bold Italic

	2005	2004	2003	2002	2001	Total
	80	1	0	1	0	82
Alberta	0	0	0	0	1	1
Alaska	7	8	7	7	6	35
Alabama	0	0	0	0	0	0
Military - Pacific	1	0	0	0	0	1
Arkansas	1	0	0	0	0	1
American Samoa	0	1	0	1	1	3
Arizona	92	83	77	78	97	427
California	116	125	114	132	143	630
Colorado	29	33	34	33	38	167
Connecticut	2	3	1	3	4	13
Delaware	0	1	0	1	0	2
Florida	3	9	12	11	9	44
Georgia	2	0	2	2	2	8
Hawaii	15	11	7	7	9	49
Iowa	3	3	2	3	2	13
Idaho	28	35	39	42	51	195
Illinois	8	8	8	9	5	38
Indiana	7	5	3	2	3	20
Kansas	3	5	2	2	3	15
Kentucky	2	1	2	1	1	7
Louisiana	1	2	3	6	2	14
Massachusetts	4	4	2	0	2	12
Maryland	6	2	2	4	7	21
Maine	5	6	2	3	4	20
Michigan	5	1	5	6	5	22
Minnesota	14	22	13	10	9	68
Missouri	9	4	5	6	5	29
Mississippi	0	1	2	2	2	7
Montana	7	11	7	6	6	37
North Carolina	4	7	10	9	5	35
North Dakota	0	3	3	5	5	16
Nebraska	4	5	3	5	6	23
Newfoundland	1	0	0	0	0	1
New Hampshire	2	1	1	2	3	9
New Jersey	1	2	4	4	3	14
New Mexico	15	22	23	19	20	99
Nevada	388	571	422	372	362	2,115
New York	7	10	11	10	11	49
Ohio	11	8	6	5	6	36

	2005	2004	2003	2002	2001	Total
Oklahoma	1	3	3	2	2	11
Oregon	13	14	12	12	14	65
Pennsylvania	5	4	6	7	6	28
Puerto Rico	0	1	0	0	0	1
Rhode Island	0	1	1	1	2	5
South Carolina	1	1	0	1	0	3
South Dakota	0	6	1	3	3	13
Tennessee	4	3	1	3	3	14
Texas	21	20	24	20	17	102
Foreign	0	0	1	0	0	1
Utah	5,833	5,464	5,005	4,876	5,030	26,208
Virginia	15	17	16	13	25	86
Virgin Islands	1	1	1	1	0	4
Vermont	0	0	1	1	0	2
Washington	10	16	12	13	16	67
Wisconsin	6	7	12	8	8	41
West Virginia	0	0	1	3	1	5
Wyoming	20	34	34	26	27	141
Foreign	0	66	83	82	103	334
Unknown	46	0	0	0	0	46
Total	6,859	6,672	6,048	5,881	6,095	31,555

	2005	2004	2003	2002	2001	Total
	12	0	0	1	0	13
Alaska	3	3	3	0	1	10
Arizona	27	14	12	17	22	92
California	26	21	17	22	25	111
Colorado	9	9	9	6	7	40
Connecticut	0	2	0	1	0	3
Florida	0	2	2	1	2	7
Georgia	2	0	1	0	1	4
Hawaii	7	4	1	0	5	17
Iowa	1	0	0	0	0	1
Idaho	9	6	8	2	4	29
Illinois	1	2	3	0	1	7
Indiana	3	1	1	0	1	6
Kentucky	0	0	1	0	0	1
Louisiana	0	0	0	1	0	1
Massachusetts	0	1	2	0	0	3
Maryland	1	1	0	1	3	6
Maine	1	4	0	0	0	5
Michigan	2	0	1	0	1	4
Minnesota	2	0	4	2	3	11
Missouri	2	0	0	1	2	5
Montana	4	2	1	0	0	7
North Carolina	1	0	2	2	1	6
North Dakota	0	0	1	1	0	2
Nebraska	0	0	0	2	0	2
Newfoundland	1	0	0	0	0	1
New Hampshire	1	0	0	1	1	3
New Jersey	1	0	0	2	0	3
New Mexico	1	4	5	3	4	17
Nevada	88	63	71	71	85	378
New York	1	1	1	2	0	5
Ohio	2	2	0	1	1	6
Oklahoma	1	1	0	1	0	3
Oregon	2	5	0	0	5	12
Pennsylvania	2	1	2	1	2	8
South Carolina	1	1	0	0	0	2
South Dakota	0	0	0	1	0	1
Tennessee	2	1	0	0	0	3
Texas	6	1	2	7	2	18
Utah	945	921	774	789	888	4,317

	2005	2004	2003	2002	2001	Total
Virginia	4	2	2	1	3	12
Washington	4	10	1	0	3	18
Wisconsin	0	1	3	1	2	7
West Virginia	0	0	0	1	0	1
Wyoming	7	2	8	3	9	29
Foreign	0	8	11	4	9	32
Total	1,182	1,096	949	949	1,093	5,269

**All Students by Country of Citizenship
2001-02 to 2005-06 (Fall)**

Country	2001-02	2002-03	2003-04	2004-05	2005-06
Alberta, Canada	1	0	3		
Argentina	1	1		1	1
Australia	0	1			
Austria					2
Bermany			1		
Bolivia				1	2
Brazil	0	1			3
Br.Columbia, Canada	0	0			
Canada	0	1		1	
China			2	4	2
Columbia	2	2	1	1	
Czech Republic		2		1	1
Democratic Republic of The Congo				1	
Ecuador	2	0			
Egypt	2	3			
El Salvador	1	1	1	1	
England	0	1	1		
Fiji			1		
France					1
Germany	1	1		1	2
Ghana	1	1	1		2
Great Britain and Northern Ireland				1	
India	1	0	1		1
Indonesia	1	0			
Iran		1	1	2	2
Japan	57	46	51	39	43
Kenya	1	0			
Korea	13	7			
Laos	1	0			
Liberia		1	1		
Malaysia	1	0			
Mexico	5	5	6	3	4
Nauru				1	
Netherlands	1	0	1		
Netherlands Antilles					1
New Zealand				1	1
Northern Ireland		1	1		
Norway	1	1			
Ontario, Canada	1	0	1		
People's Rep. of China	2	2			
Peru	3	1	2	1	1
Philippines	3	0	1	2	2
Portugal	0	0			
Russia			2	2	
Saskatchewan, Canada	1	0			

All Students by Country of Citizenship
2001-02 to 2005-06 (Fall)

Country	2001-02	2002-03	2003-04	2004-05	2005-06
Saudi Arabia	2	0			
Slovakia			1	1	1
South Africa	0	1	1	1	1
South Korea			3	5	3
Soviet Union	5	5			
Spain	0	0			
Sweden					3
Switzerland	1	1			1
Taiwan	10	11	11	6	5
Tonga	2	0	2	3	2
Turkey	1	1			
Ukraine			1		
Venezuela	0	1	1	1	1
Yemen (Sanaa)	2	2			
Subtotal	126	102	99	81	88
Not Specified	1	1	4	1	
United States	5,968	5,778	5,945	6,590	6,771
Total	6,095	5,881	6,048	6,672	6,859

Entering Freshmen by Country of Citizenship
2001-02 to 2005-06 (Fall)

Country	2001-02	2002-03	2003-04	2004-05	2005-06
Alberta, Canada			1		
Brazil		1			
Canada	0	1			
China					1
Columbia	1	0			
Czechoslovakia	0	1			
El Salvador	1	0			
Ghana	0	0			
Indonesia	1	0			
Iran				1	
Japan	0	0	6	6	7
Korea	3	1			
Mexico			2		1
Ontario, Canada			1		
Peru			1		
Saudi Arabia	0	0			
South Africa	0	1			
South Korea					1
Soviet Union	1	0			
Taiwan	2	1	2	1	
Tonga	1	0			
Turkey	1	0			
Venezuela	0	1			
Yemen (Sanaa)	1	0			
Subtotal	12	7	13	8	10
Not Specified			2		
United States	1,081	942	934	1,088	1,172
Total	1,093	949	949	1,096	1,182

**All Students by Ethnic Background and Gender
2001-02 to 2005-06 (Fall)**

Ethnic Background		2001-02	2002-03	2003-04	2004-05	2005-06
American Indian or Alaskan Native	Male	24	25	26	36	30
	Female	39	43	38	46	63
	Total	63	68	64	82	93
Asian	Male	68	49	56	42	37
	Female	58	54	62	70	52
	Total	126	103	118	112	89
Black	Male	20	21	25	35	39
	Female	12	13	19	23	12
	Total	32	34	44	58	51
Hispanic	Male	51	46	45	64	66
	Female	55	56	61	70	78
	Total	106	102	106	134	144
Pacific Islander	Male	19	15	17	33	36
	Female	7	10	7	14	35
	Total	26	25	24	47	71
Other	Male	8	11	9	0	16
	Female	10	8	10	1	12
	Total	18	19	19	1	28
White (Non-hispanic)	Male	2,470	2,361	2,454	2,621	2,584
	Female	3,172	3,058	3,010	3,469	3,511
	Unspecified					13
Total	5,642	5,419	5,464	6,090	6,108	
Not Specified	Male	54	61	98	74	108
	Female	28	50	110	74	127
	Unspecified					40
	Total	82	111	208	148	275
Asian or Pacific Islander	Male			1	0	
	Female			0	0	
	Total			1	0	0
Total Students	Male	2,714	2,589	2,731	2,905	2,916
	Female	3,381	3,292	3,317	3,767	3,890
	Unspecified					53
	Total	6,095	5,881	6,048	6,672	6,859

Total Headcount Enrollment by Major & CIP Code
Fall 2001-02 to 2005-06

Proposed CIP Code	Major	2001-02	2002-03	2003-04	2004-05	2005-06
52.0301	Accounting	104	107	123	193	184
01.0102	Agriculture Science and Industries	31	43		44	35
01.0000	Agriculture, General	1		42		
50.0701	Art	99	61	42	64	53
50.0701	Art Composite		46	40	26	21
13.1302	Art Education			1	5	21
13.1302	Art Teacher Education			3	4	6
50.0704	Arts Administration	8	11	4	5	10
51.0913	Athletic Training	7	40	48	40	32
47.0604	Automotive Mechanics Technology	16	26	20	18	11
26.0101	Biology	285	278	277	307	284
13.1322	Biology Teacher Education	16	18	25	19	25
52.0201	Business Administration & Management	34	19	24	36	44
13.1303	Business Education Composite	36	12	2	3	6
48.0703	Cabinet Making and Millwork	3	5	4	2	3
14.0701	Chemical Engineering	2	2		1	1
40.0501	Chemistry		5	32	55	50
13.1323	Chemistry Teacher Education	2		4	2	5
40.0501	Chemistry-Professional Health Care	42	10		6	2
19.0706	Child Development			17		
15.1304	Civil Design	2	1	1		
14.0801	Civil Engineering	5	8	5	5	1
52.0408	Clerical Technology	5	1			
13.1331	Communication Education	4	2	2	2	1
09.0101	Communications	293	279	249	245	259
09.0101	Communication Professional					22
14.0901	Computer Engineering	3		1		1
11.0401	Computer Information Systems	135	19	4	1	
52.1204	Computer Information Systems	12				
11.0701	Computer Science	91	76	54	54	61
13.1321	Computer Teacher Education					
46.0403	Construction Management	14	19	36	47	61
46.0201	Construction Technology	25	27	13	22	9
43.0104	Criminal Justice	205	238	239	243	229
50.0301	Dance	51	36	34	34	28
13.1324	Dance Teacher Education			7	14	16
15.1302	Design Technology (CAD/CAM)	15	11	8		5
19.0706	Early Childhood Development	24	21		7	4
13.1316	Earth Science				1	
45.0601	Economics	1	3	9	23	23
13.0101	Education	145	146	155	222	293
13.1004	Education of the Gifted and Talented*					
14.1001	Electrical, Electronics & Communications Engineering	1	1	3		2
46.0302	Electrician	27	2	22	1	
47.0105	Electronic Technology	7	10	7	6	5
13.1202	Elementary Education & Teaching	665	607	536	538	486
13.1202	Level I Elementary License					1
13.1205	Level I Secondary License					2
15.0000	Engineering Technology	73	52	73	79	101
23.0101	English Language and Literature	136	129	102	103	100
13.1305	English Teacher Education			21	34	65
13.1308	Family & Consumer Science Teacher Education	22	23	29	31	20
19.0101	Family & Consumer Sciences	105	115	114	123	122
52.0801	Finance	27	26	27	54	55
16.0901	French Language and Literature	3	2	2	4	6
13.1325	French Teacher Education				2	
45.0799	Geographic Information Systems			1	3	1

Total Headcount Enrollment by Major & CIP Code
Fall 2001-02 to 2005-06

Proposed CIP Code	Major	2001-02	2002-03	2003-04	2004-05	2005-06
40.0601	Geology	16	17	23	29	32
40.0601	Geology and Earth Science	1	3	2		
16.0501	German Language and Literature	11	16	12	8	9
13.1326	German Teacher Education				1	2
50.0402	Graphic Design		3	29	33	34
54.0101	History	98	97	78	73	66
13.1328	History Teacher Education			16	32	40
52.0901	Hotel, Resort & Hospitality				4	21
11.0301	Information / Office Systems			1	6	
11.0401	Information Systems		115	102	53	36
11.0401	Information Systems Applications		16	8	9	7
13.13	Information Systems Teaching					
13.0501	Instructional Media Design (Library Media)					
13.0501	Instructional Media Design*					
14.1301	Integrated Engineering	18	44	38	41	61
50.0408	Interior Design	18	16	7	9	17
	International Business					
45.0901	International Relations					
01.0302	Livestock Farm Management	19	9	9	2	1
48.0501	Machine Tool Technology (CNC)	12	12	1	1	
52.0201	Management	37	34	56	192	211
52.1201	Management Information Systems	10	2			
52.0601	Managerial Economics	3	1			
52.1401	Marketing	13	27	44	64	94
	Marketing Teacher Education					
14.1801	Materials Engineering					
27.0101	Mathematics	49	38	32	32	37
13.1311	Mathematics Teacher Education	25	28	23	37	31
14.1901	Mechanical Engineering	4	4	6	1	3
52.0404	Medical Secretary	7	10	9		
51.0708	Medical Transcription	14	11	11	7	
29.0101	Military Science					
50.0901	Music	104	95	78	72	66
13.1312	Music Teacher Education			16	31	48
51.1601	Nursing	75	120	193	19	125
51.1614	Nursing Assistant Training	14	8	1		
52.0204	Office Management Technology	4	1		1	
22.0302	Paralegal	12	12	13	21	10
13.1314	Physical Education Teaching and Coaching	164	168	153	175	185
40.0101	Physical Science Education Composite	6	2			
13.1316	Physical Science Teacher Education	10	10	11	6	6
	Physics					
	Physics Teacher Education					
46.0501	Plumbing Apprenticeship		9			
46.0503	Plumbing Technology	11				
45.1001	Political Science	63	74	78	66	82
13.1317	Political Science Education					
51.0899	Pre-Allied Health	4	6	10	11	3
52.0101	Pre-Business	524	446	360	120	52
40.0501	Pre-Chemistry		39	38	18	32
51.1101	Pre-Dentistry Studies	44	48	49	54	42
14.0101	Pre-Engineering, General	22	11	30	33	9
03.0501	Pre-Forestry	7	11	5	8	2
22.0001	Pre-Law	22	16	21	15	15
51.1005	Pre-Medical Technology			5	4	3
51.1102	Pre-Medicine Studies	86	70	70	95	103
51.1601	Pre-Nursing				224	255

Total Headcount Enrollment by Major & CIP Code
Fall 2001-02 to 2005-06

Proposed CIP Code	Major	2001-02	2002-03	2003-04	2004-05	2005-06
51.1103	Pre-Pharmacy Studies	21	17	20	28	21
51.0806	Pre-Physical Therapy	29	21	16	31	22
51.1104	Pre-Veterinary Studies	24	12	10	11	11
42.0101	Psychology	238	220	254	265	255
13.1205	Secondary Education and Teaching					
52.0401	Secretarial Technology	19	4			
52.0299	Small Business Management Technology	10				
45.0101	Social Sciences	20	21			
13.1317	Social Sciences Teacher Education		82	30	30	30
45.1101	Sociology	89		88	87	58
13.1317	Sociology Education					
16.0905	Spanish Language and Literature	35	30	23	16	19
13.1330	Spanish Language Teacher Education			9	9	12
13.1001	Special Education Teaching (mild/moderate)	7	3	2	7	5
13.1309	Technology Teacher Education	37	32	28	26	16
50.0501	Theatre Arts	140	144	123	126	111
13.1324	Theatre Arts/Drama Teacher Education			6	7	18
	Subtotal	4,978	4,772	4,709	4,978	5,090
	Continuing Education	612	653	800	1,147	1,088
24.0102	General Education	496	444	435	414	616
30.9999	Multi/interdisciplinary Studies	9	4	10	5	7
	Non Degree Seeking			86	123	57
	Utah Electronic College		8	8	5	1
	Total	6,095	5,881	6,048	6,672	6,859

ENROLLMENT STATISTICS
SCHOOL OF CONTINUING AND PROFESSIONAL STUDIES

	1999~00		2000~01		2001~02		2002~03		2003~04		2004~05	
	CREDIT	NON	CREDIT	NON	CREDIT	NON	CREDIT	NON	CREDIT	NON	CREDIT	NON
EVENING/ENRICHMENT PROGRAMS	888	367	893	380	1,167	654	741	67	539	270	414	263
CONFERENCE SERVICES	314	39,024	357	43,006	351	48,677	381	40,640	257	47,904	272	46,566
<i>Concurrent</i>	198		264	397	255	396	257		260		2	
<i>CEU's</i>		150		3.2		2.4		2.4	4			
INTERNATIONAL STUDIES											5	3
DISTANCE LEARNING												
<i>Independent Study</i>	342		417		627		396		183		DEPARTMENTS	
<i>At-Site</i>	5,074		6,393		6,730		9,722		8,296		12,247	
<i>Internet</i>	236		463		449		583		992		2365	
CONCURRENT	328											
<i>Internet</i>	143		197		124		226		440		538	
<i>Adjunct</i>	580		620		411		761		481		813	
<i>Summer School Concurrent</i>	51		108		92		111		54		29	
EDNET												
<i>Concurrent</i>	320		389		344		201		344		212	
<i>Undergraduate</i>	710		617		307		230		116		202	
<i>Graduate</i>	104		197		286		338		535		510	
SNOW COLLEGE SOUTH CENTER	293		287		189		160		175		184	
ST. GEORGE UNIVERSITY CENTER	873		436		567		173		58		55	
TOTALS	10,454	39,541	11,638	43,786	11,899	49,729	14,280	40,709	12,734	48,174	17,848	46,832

Source: School of Continuing and Professional Studies