



---

**SUBJECT: MISSION STATEMENT**

---

**Introduction:**

In a rapidly changing global community, higher education institutions must educate students to be critical thinkers, effective communicators, lifelong learners and individuals who demonstrate integrity and empathy as they pursue their lives' ambitions. Capitalizing on our unique environment, Southern Utah University will prepare her graduates to excel in these areas by emphasizing the following core values: Academic Excellence, Community and Social Responsibility, and Involvement and Personal Growth.

**Our Heritage:**

Through our more than 107 year history, Southern Utah University has evolved from a teacher training institution to our current role as a comprehensive, regional university offering graduate, baccalaureate, associate and technical programs. From the time of her founding, SUU has placed students first by featuring personalized and participative classes, combined with competent, qualified and supportive faculty, staff and administration. People of the region look to the University for skill development opportunities, major academic specialties, outreach services, cultural and athletic activities, economic and business development, and regional archives

**Our Vision:**

Southern Utah University will be nationally recognized as a premier regional university where exemplary faculty and staff, personalized learning, and academic integrity, enable students and graduates to honor thought in all its finest forms and to excel in life.

**Our Mission:**

Southern Utah University is a comprehensive regional institution committed to providing an excellent education through a diverse, dynamic, and personalized learning environment.

# SOUTHERN UTAH UNIVERSITY

## PROFILE

January 2006

Southern Utah University established: 1897  
Public, Comprehensive, Coeducational, Masters I University  
Accreditation: Northwest Association of Colleges and Schools  
President: Steven D. Bennion  
Calendar: Semester

### Enrollment:

Fall Headcount 6,859  
Fall FTE 5,371

**Number of Fall Full-time Faculty:** 216

### Number of employees:

Contract 670  
Non-student / Non-contract 182

**Dorm capacity:** 700

**Average age (all students):** 24.8

### Land and Facilities:

Campus Proper Acreage 130  
Shakespearean Festival 6  
Valley farm acreage 1,032  
Mountain property 2,629  
Other property 194  
Total 3,991

**Number of buildings:** 81

**No. of square feet in inventory:** 1,431,604

### Annualized FTE Student to FTE Faculty Ratio (Budget)

2004-05 Cost Study 18.93

### Student Residency Enrollment Status:

Resident 6,071 88.5%  
Non-Resident 788 11.5%

### Utah Counties:

Southern 15 counties 3,824 55.8%  
Northern 14 counties 1,888 27.5%  
Out of State Residents 359 5.2%  
Non-Utah 788 11.5%

### Gender:

Male 2,916 42.5%  
Female 3,890 56.7%  
Non-specified 53 .8%

### Ethnicity:

Asian 89 1.3%  
African-American 51 0.7%  
Hispanic 144 2.1%  
American Indian 93 1.4%  
Pacific Islander 71 1.0%  
Other 28 0.4%  
Caucasian 6,108 89.1%  
Unspecified 275 4.0%

**Six-year graduation rate for 1999 cohort:** 31%

**Average ACT score:** 21.58

**2004-05 Avg. Credit Hours Taught per FTE Faculty:** 11.9

**2004-05 Avg. Credits Earned Toward Graduation:** 149.94

**2004-05 Avg. Years for a Bachelor's Degree:** 4.5

**2004 Graduates with Bachelor Degrees Seeking Employment:** 3%

# GENERAL OFFICERS OF ADMINISTRATION

## Office of the President

President ..... Steven D. Bennion  
Assistant Attorney General/Legal Counsel ..... D. Michael Carter

## Academic Affairs

Provost ..... Abe Harraf  
Associate Provost (Interim) ..... Lee Montgomery  
Assistant Provost for Information Technology ..... Glen Pryor

## Administrative and Financial Services

Vice President ..... Gregory Stauffer  
Associate Vice President ..... Dorian Page

## Advancement and Regional Services

Vice President ..... D. Mark Barton

## Student Services

Vice President ..... Georgia Beth Thompson  
Associate Vice President & Dean of Students ..... Neal L. Cox  
Assistant Vice President ..... Dale S. Orton

## Deans

Dean, Business ..... Carl Templin  
Dean, Computing, Integrated Engineering & Technology ..... Mikhail Bouniaev  
Dean, Continuing and Professional Studies ..... Carl Ellis  
Dean, Education ..... Bruce Barker  
Dean, Humanities and Social Sciences ..... Rodney D. Decker  
Dean, Library ..... Diana T. Graff  
Dean, Performing and Visual Arts ..... William Byrnes  
Dean, Science ..... Harold Ornes

## Department Chairs

Accounting ..... David S. Christensen  
Agriculture & Nutrition Science ..... Cindy Wright  
Art ..... Eric Brown  
Biology ..... Kate Grandison  
Communication ..... Jon M. Smith  
Computer Science & Information Systems ..... Nasser Tadayon  
Economics and Finance ..... Joe Baker  
Elementary Education ..... Jerry Bowler  
English ..... Kay K. Cook  
Foreign Languages and Humanities ..... James W. Harrison  
History and Sociology ..... Curtis Bostick  
Integrated Engineering & Technology ..... Richard Wittwer  
Management and Marketing ..... Alan Hamlin  
Mathematics (Interim) ..... Eric Freden  
Military Science ..... Captain Brent Anderson  
Music ..... Carol Ann Modesitt  
Nursing ..... Donna Lister  
Physical Education ..... Rick Lambson  
Physical Science ..... Robert Eves  
Political Science & Criminal Justice ..... Lamar Jordan  
Psychology ..... Leslie N. Jones  
Secondary Education ..... (Vacant)  
Theatre Arts and Dance ..... Shauna Mendini

**Accreditation of Programs**  
**General University Accreditation: Northwest Association of Schools and Colleges.**

---

<u>College</u>	<u>Department/Major</u>	<u>Agency</u>	
<b>Performing &amp; Visual Arts</b>			
	Dance	National Association of Schools of Dance	
	Dance Education	National Association of Schools of Dance	
	Music	National Association of Schools of Music	
	Music Education		
<b>Business</b>			
	Accounting	Association of Collegiate Business Schools & Programs	
	Finance		
	Management		
	Marketing		
	Master of Accountancy		
	Master of Business Administration		
<b>Education</b>			
	Elementary Education	National Association of State Directors of Teacher Education and Certification National Council for Accreditation of Teacher Education	
	Secondary Education		
	Special Education		
	Early Childhood Education		
	Education Administrative/ Supervisory License		
	Family & Consumer Sciences Education		
	Athletic Training		
			Utah State Office of Education
			National Athletic Training Association
<b>Computing, Integrated Engineering &amp; Technology</b>			
	Automotive	National Automotive Technicians Education Foundation/Automotive Service Excellence (NATEF/ASE)	
	Technology Education	Utah State Office of Education	
<b>Science</b>			
	Nursing	Utah State Board of Nursing	
	Chemistry	American Chemical Society (Candidacy)	

## **Southern Utah University Peer Institutions**

Boise State University  
California State University at Dominguez Hills  
Clarion University of Pennsylvania  
Indiana University/Purdue University at Fort Wayne  
University of North Florida  
University of Northern Iowa  
University of Wisconsin at Whitewater  
Western Carolina University  
Western Washington University  
Youngstown State University

## **Association Memberships**

- ▶ American Association of College of Nursing
- ▶ American Association of College Registrars and Admissions Officers
- ▶ American Association of Colleges for Teacher Education
- ▶ American Association of Family & Consumer Science
- ▶ American Association for Higher Education
- ▶ American Association of State Colleges and Universities
- ▶ American Association of University Women
- ▶ American College Theatre Festival
- ▶ American College Dance Festival
- ▶ American Council on Education
- ▶ American Library Association
- ▶ Association for the Advancement of Collegiate Schools of Business–International (AACSB International)
- ▶ Association for Supervision and Curriculum Development
- ▶ Association of American Colleges and Universities
- ▶ Association of Arts Administration Educators
- ▶ Association of Collegiate Business Schools and Programs (ACBSP)
- ▶ Association of Collegiate Conference & Events Directors - International (ACCED-I)
- ▶ Association for Continuing Higher Education
- ▶ Association for Institutional Research
- ▶ The College Board
- ▶ Colorado Plateau Cooperative Ecosystem Studies Unit
- ▶ Council for Advancement and Support of Education
- ▶ EDUCAUSE
- ▶ International Council of Fine Arts Deans
- ▶ International Technology Education Association (ITEA)
- ▶ Microsoft Systems & Developer Network Academic Alliance (MSDNAA)
- ▶ Mountain Plains Adult Education Association
- ▶ National Academic Advising Association (NACADA)

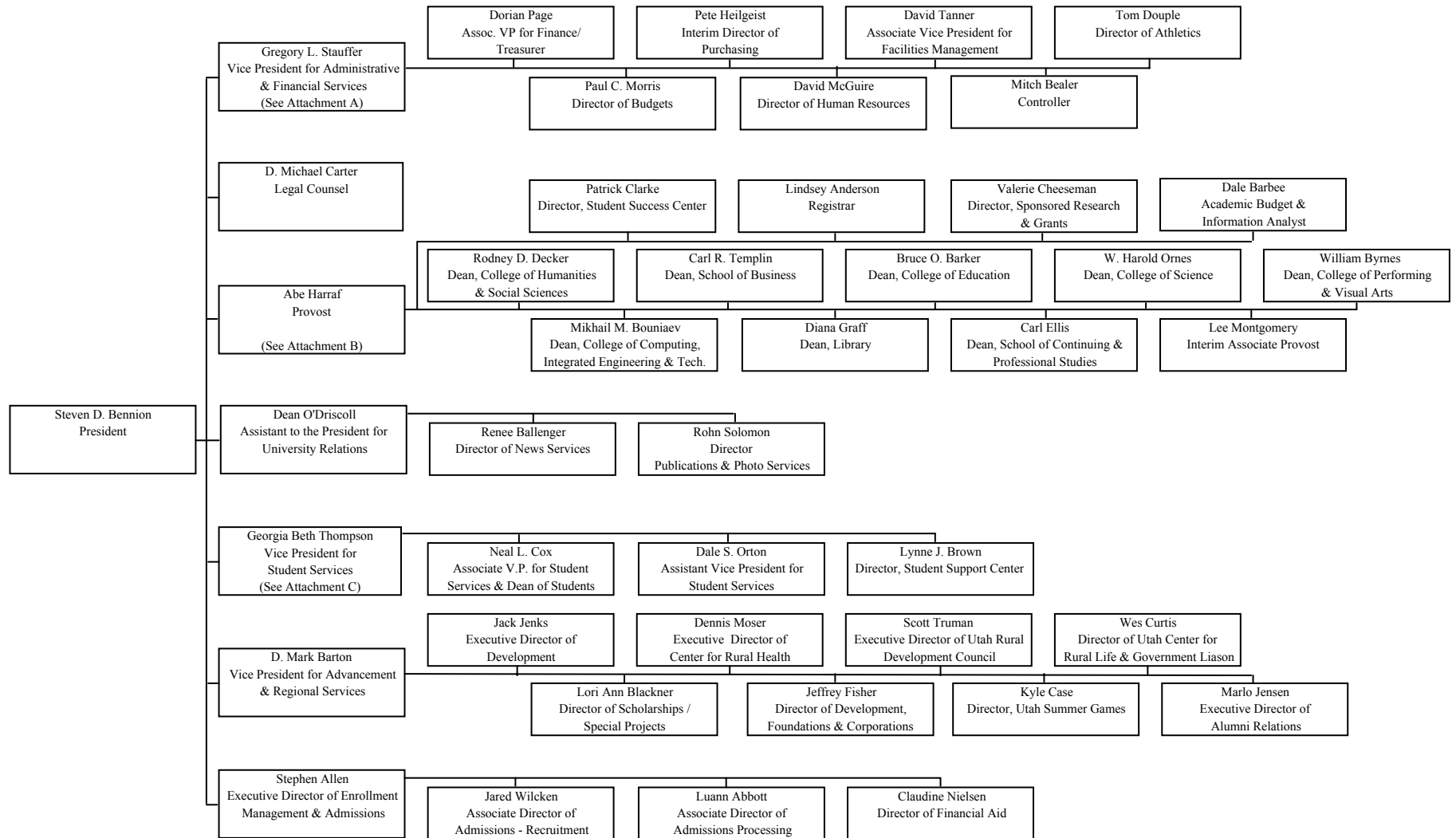
- ▶ National Association of College and University Business Officers
- ▶ National Association of Rural Health
- ▶ National Association of Schools of Dance
- ▶ National Association of Schools of Music
- ▶ National Association of Student Financial Aid Administrators
- ▶ National Athletic Training Association
- ▶ National Business Education Association
- ▶ National Collegiate Athletic Association
- ▶ National Council for the Accreditation of Teacher Education (NCATE)
- ▶ National Institute of Outdoor Drama
- ▶ National League for Nursing
- ▶ National Rural Education Association
- ▶ National Theatre Conference
- ▶ North American Association of Summer Sessions
- ▶ Novel Education Academic Partner (NEAP)
- ▶ Professional and Organizational Developmental Network in Higher Education (POD)
- ▶ Shakespeare Theatre Association of America
- ▶ Society for College and University Planning
- ▶ South Eastern Theatre Conference
- ▶ Theatre Communications Group
- ▶ United States Institute for Theatre Technology
- ▶ University Continuing Education Association (UCEA)
- ▶ Utah Academic Library Consortium
- ▶ Utah Association for Adult, Community & Continuing Education (UAACCE)
- ▶ Western Association of Summer Session Administrators
- ▶ Western Interstate Commission for Higher Education (WICHE)

\* The above listing is only to be representative of the major types of memberships held by the University.

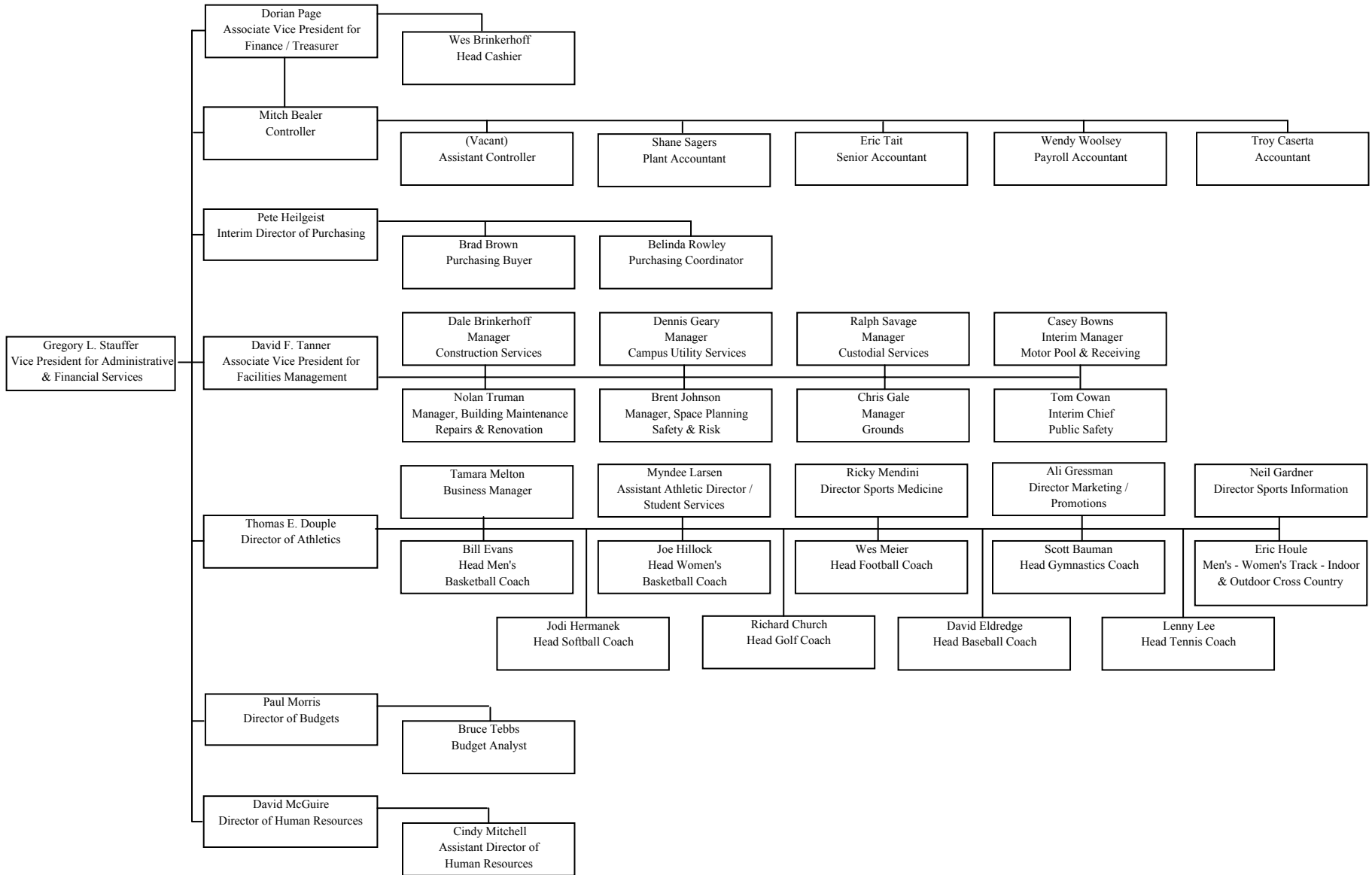
## Southern Utah University Presidents

Milton Bennion	1897-1900
J. Reuben Clark, Jr.	1900-1901
Nathan T. Porter	1901-1904
George W. Decker	1904-1913
Roy F. Homer	1913-1921
Peter V. Cardon	1921-1922
J. Howard Maughan	1922-1929
Henry Oberhansley	1929-1945
H. Wayne Driggs	1945-1951
Daryl Chase	1951-1953
Royden C. Braithwaite	1955-1978
Orville D. Carnahan	1978-1981
Gerald R. Sherratt	1982-1997
Steven D. Bennion	1997-

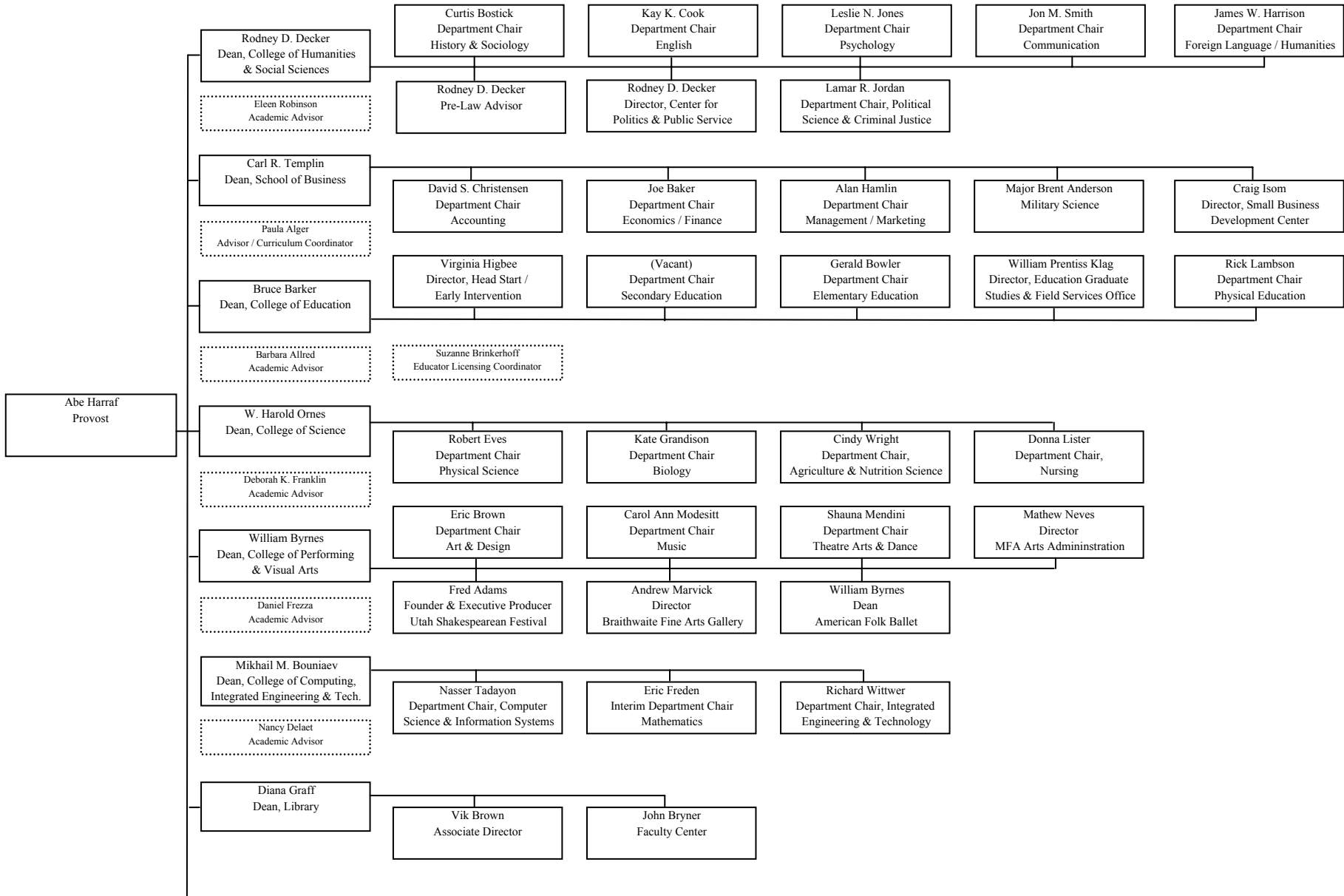
## Southern Utah University 2005-06 Administrative Organizational Chart



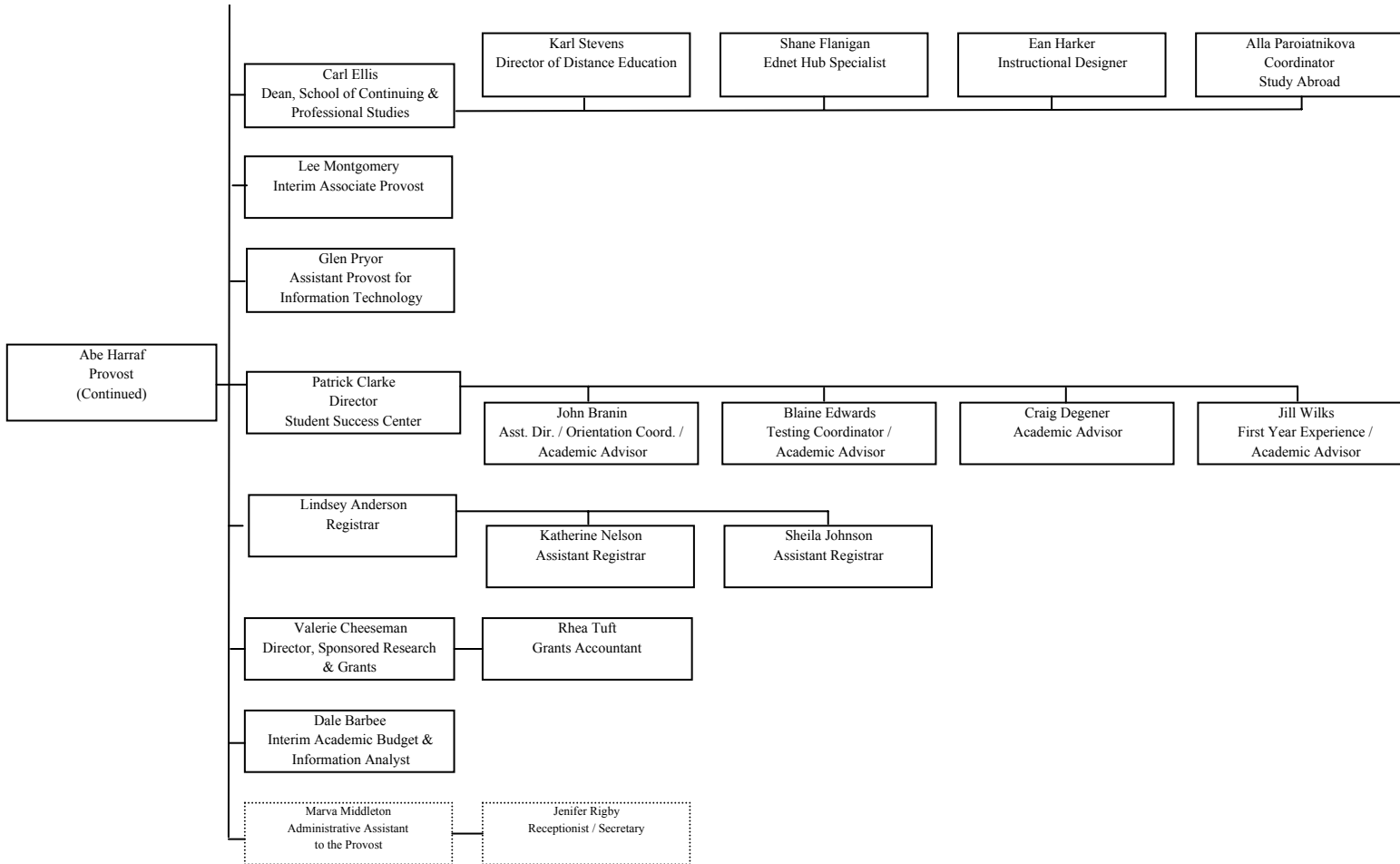
**Southern Utah University**  
**2005-06 Vice President for Administrative & Financial Services Organizational Chart**  
**Attachment A**



**Southern Utah University**  
**2005-06 Provost Organizational Chart**  
**Attachment B**



**Southern Utah University**  
**2005-06 Provost Organizational Chart**  
**Attachment B**



**Southern Utah University**  
**2005-06 Vice President for Student Services Organizational Chart**  
**Attachment C**

