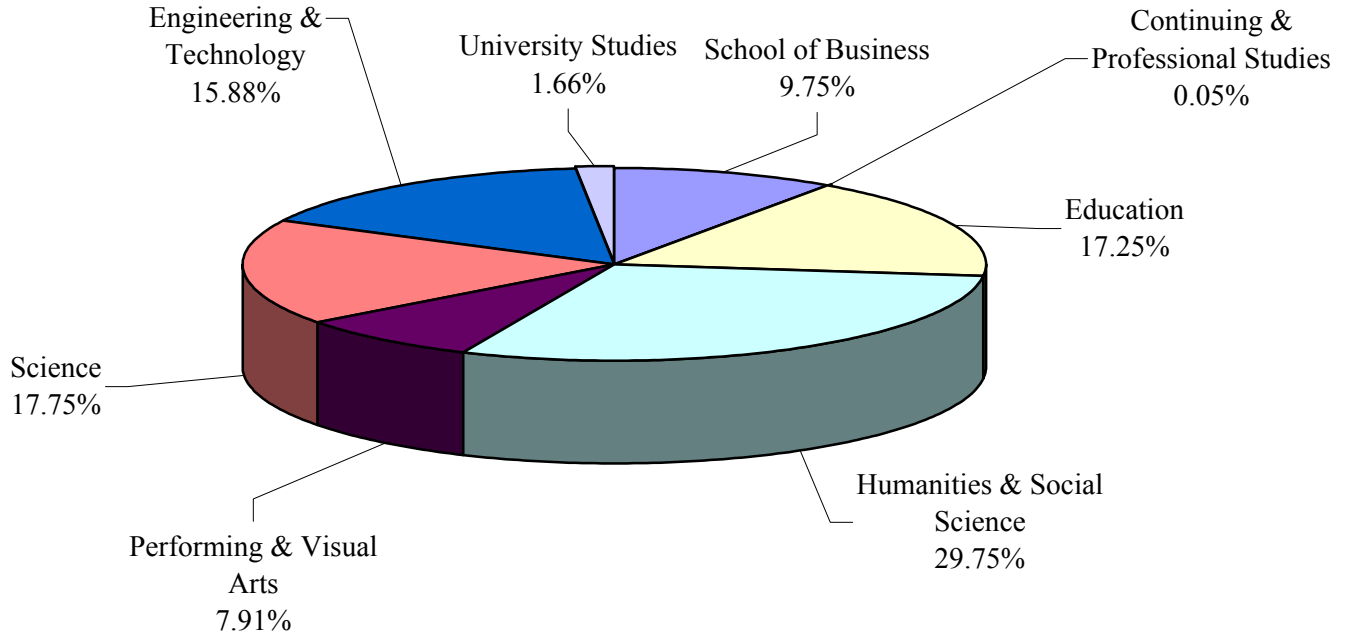
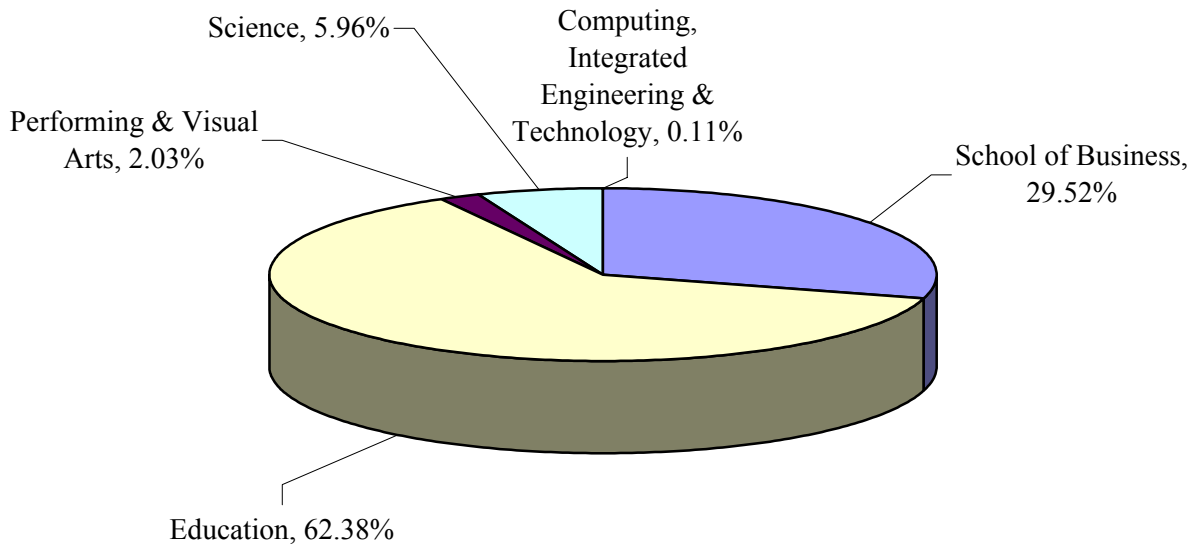


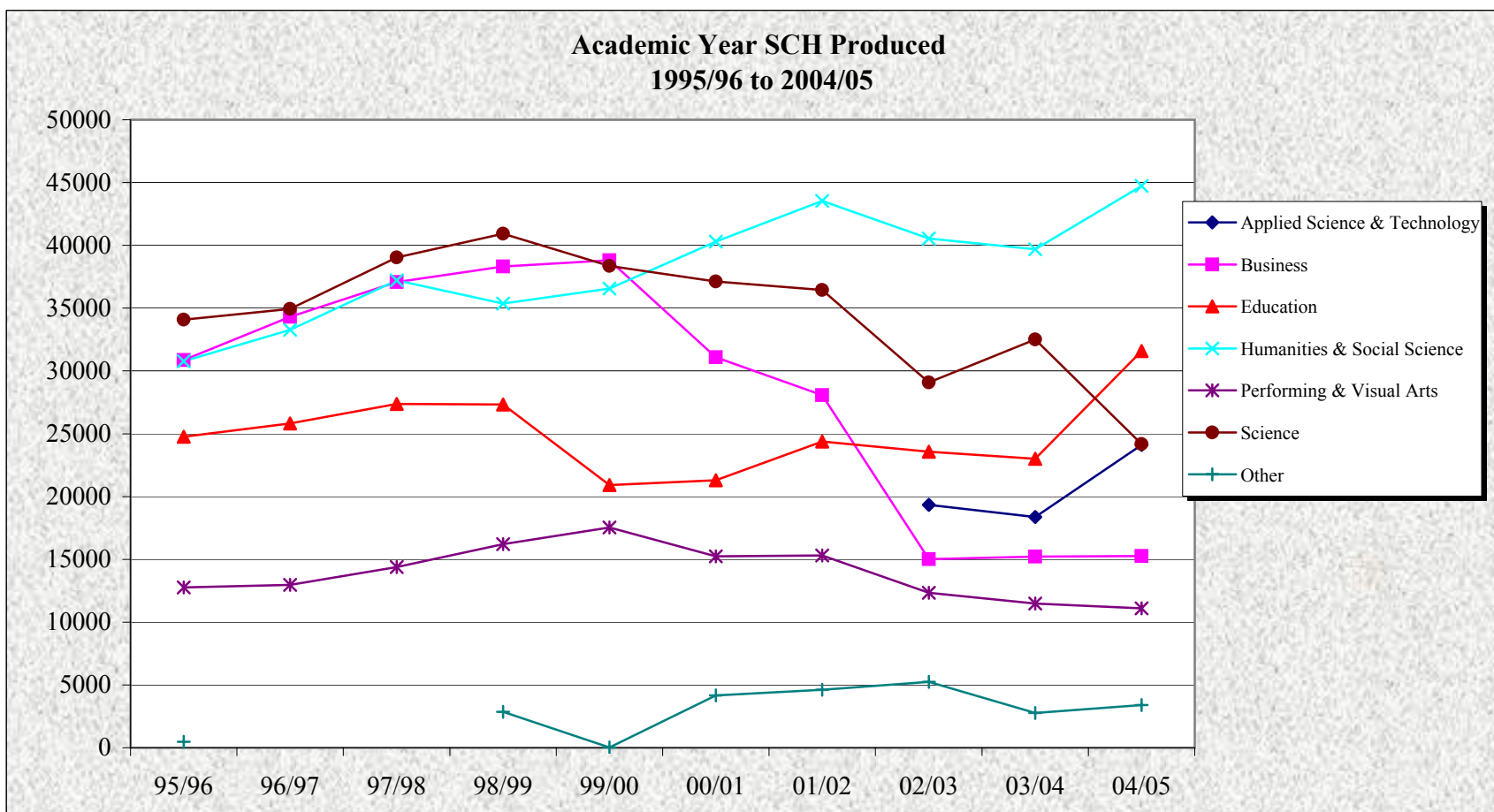
SUU Undergraduate SCH Fall 2005



SUU Graduate SCH Fall 2005



	95/96	96/97	97/98	98/99	99/00	00/01	01/02	02/03	03/04	04/05
Applied Science & Technology								19,331	18,374	24,109
Business	30,856	34,315	37,073	38,317	38,812	31,097	28,066	15,026	15,225	15,260
Education	24,771	25,819	27,378	27,339	20,904	21,306	24,391	23,561	23,001	31,596
Humanities & Social Science	30,783	33,266	37,212	35,366	36,552	40,292	43,546	40,538	39,694	44,737
Performing & Visual Arts	12,767	12,958	14,379	16,217	17,527	15,235	15,298	12,327	11,483	11,103
Science	34,088	34,932	39,030	40,933	38,351	37,129	36,443	29,093	32,507	24,178
Other	480			2,856	26	4,175	4,604	5,256	2,761	3,406
Total	133,745	141,290	155,073	161,028	152,172	149,234	152,348	145,132	143,045	154,389



Source: Third-Week Enrollment Report

* Beginning 00/01, "Other" category includes Continuing Ed Univ Studies

B Rayburn, Associate Provost's Office, 4/12/2006