



SUBJECT: MISSION STATEMENT

Introduction:

In a rapidly changing global community, higher education institutions must educate students to be critical thinkers, effective communicators, lifelong learners and individuals who demonstrate integrity and empathy as they pursue their lives' ambitions. Capitalizing on our unique environment, Southern Utah University will prepare her graduates to excel in these areas by emphasizing the following core values: Academic Excellence, Community and Social Responsibility, and Involvement and Personal Growth.

Our Heritage:

Through our more than 107 year history, Southern Utah University has evolved from a teacher training institution to our current role as a comprehensive, regional university offering graduate, baccalaureate, associate and technical programs. From the time of her founding, SUU has placed students first by featuring personalized and participative classes, combined with competent, qualified and supportive faculty, staff and administration. People of the region look to the University for skill development opportunities, major academic specialties, outreach services, cultural and athletic activities, economic and business development, and regional archives

Our Vision:

Southern Utah University will be nationally recognized as a premier regional university where exemplary faculty and staff, personalized learning, and academic integrity, enable students and graduates to honor thought in all its finest forms and to excel in life.

Our Mission:

Southern Utah University is a comprehensive regional institution committed to providing an excellent education through a diverse, dynamic, and personalized learning environment.

SOUTHERN UTAH UNIVERSITY

PROFILE

January 2007

Southern Utah University established: 1897
Public, Comprehensive, Coeducational, Masters I University
Accreditation: Northwest Association of Colleges and Schools
President: Michael T. Benson
Calendar: Semester

Enrollment:

Fall Headcount 7,029
Fall FTE 5,580

Number of Fall Full-time Faculty: 218

Number of employees:

Contract 653
Non-student / Non-contract 137

Dorm capacity: 730

Average age (all students): 24.7

Land and Facilities:

Campus Proper Acreage 130
Shakespearean Festival 6
Valley farm acreage 1,032
Mountain property 2,629
Other property 194
Total 3,991

Number of buildings: 82

No. of square feet in inventory: 1,442,563

Annualized FTE Student to FTE Faculty Ratio (Budget)

2005-06 Cost Study 18.48

Student Residency Enrollment Status:

Resident 6,021 88.5%
Non-Resident 1,008 11.5%

Utah Counties:

Southern 15 counties 3,468 49.4%
Northern 14 counties 1,773 25.2%
Out of State Residents 780 11.1%
Non-Utah 1,008 14.3%

Gender:

Male 2,923 41.6%
Female 4,097 58.3%
Non-specified 9 .1%

Ethnicity:

Asian 95 1.4%
African-American 58 0.8%
Hispanic 203 2.9%
American Indian 117 1.7%
Pacific Islander 71 1.0%
Other 42 0.6%
Caucasian 6,224 88.5%
Unspecified 219 3.1%

Six-year graduation rate for 2000 cohort: 33%

Average ACT score: 21.89

2005-06 Avg. Credit Hours Taught per FTE Faculty: 13.1

2005-06 Avg. Credits Earned Toward Graduation: 148.55

2005-06 Avg. Years for a Bachelor's Degree: 3.9

2005 Graduates with Bachelor Degrees Seeking Employment: 3%

GENERAL OFFICERS OF ADMINISTRATION

Office of the President

President (Interim) Gregory Stauffer
Assistant Attorney General/Legal Counsel D. Michael Carter

Academic Affairs

Provost Abe Harraf
Associate Provost Lee Montgomery
Assistant Provost for Information Technology Glen Pryor

Administrative and Financial Services

Vice President (Interim) Dorian Page
Associate Vice President Dorian Page

Advancement and Regional Services

Vice President D. Mark Barton

Student Services

Vice President Georgia Beth Thompson
Associate Vice President & Dean of Students Neal L. Cox
Assistant Vice President Dale S. Orton

Deans

Dean, Business Carl Templin
Dean, Computing, Integrated Engineering & Technology Mikhail Bouniaev
Dean, Continuing and Professional Studies Carl Ellis
Dean, Education Prent Klag
Dean, Humanities and Social Sciences Rodney D. Decker
Dean, Library Diana T. Graff
Dean, Performing and Visual Arts William Byrnes
Dean, Science Harold Ornes

Department Chairs

Accounting David S. Christensen
Agriculture & Nutrition Science Cindy Wright
Art Eric Brown
Biology Kate Grandison
Communication Jon M. Smith
Computer Science & Information Systems Nasser Tadayon
Economics and Finance Joe Baker
Elementary Education Jerry Bowler
English Kay K. Cook
Foreign Languages and Humanities James W. Harrison
History and Sociology Curtis Bostick
Integrated Engineering & Technology William Pratt
Management and Marketing Alan Hamlin
Mathematics (Interim) Eric Freden
Military Science Captain Robert Warden
Music Keith Bradshaw
Nursing Donna Lister
Physical Education Rick Lambson
Physical Science Robert Eves
Political Science & Criminal Justice Lamar Jordan
Psychology Luciane Berg
Secondary Education (Vacant)
Theatre Arts and Dance Shauna Mendini

**Southern Utah University
Accreditation of Programs**

General University Accreditation: Northwest Association of Schools and Colleges.

<u>College</u>	<u>Department/Major</u>	<u>Agency</u>
Performing & Visual Arts		
	Dance	National Association of Schools of Dance
	Dance Education	National Association of Schools of Dance
	Music	National Association of Schools of Music
	Music Education	
Business		
	Accounting	Association for the Advancement of Collegiate Business Schools - International (AACSB International)
	Finance	
	Management	
	Marketing	
	Master of Accountancy	
	Master of Business Administration	
Education		
	Elementary Education	National Council of Teachers of English (NCTE)
	Secondary Education	
	Special Education	
	Early Childhood Education	National Association of State Directors of Teacher Education and Certification National Council for Accreditation of Teacher Education
	Education Administrative/ Supervisory License	
	Family & Consumer Sciences	
	Education	Utah State Office of Education
	Athletic Training	National Athletic Training Association
Computing, Integrated Engineering & Technology		
	Technology Education	Utah State Office of Education
Science		
	Nursing	Utah State Board of Nursing Commission on Collegiate Nursing Education
	Chemistry	American Chemical Society (Candidacy)

Southern Utah University Peer Institutions

Boise State University
California State University at Dominguez Hills
Clarion University of Pennsylvania
Indiana University/Purdue University at Fort Wayne
University of North Florida
University of Northern Iowa
University of Wisconsin at Whitewater
Western Carolina University
Western Washington University
Youngstown State University

Association Memberships

- ▶ American Association of College of Nursing
- ▶ American Association of College Registrars and Admissions Officers
- ▶ American Association of Colleges for Teacher Education
- ▶ American Association of Family & Consumer Science
- ▶ American Association for Higher Education
- ▶ American Association of State Colleges and Universities
- ▶ American Association of University Women
- ▶ American College Theatre Festival
- ▶ American College Dance Festival
- ▶ American Council on Education
- ▶ American Library Association
- ▶ Association for the Advancement of Collegiate Schools of Business–International (AACSB International)
- ▶ Association for Supervision and Curriculum Development
- ▶ Association of American Colleges and Universities
- ▶ Association of Arts Administration Educators
- ▶ Association of Collegiate Business Schools and Programs (ACBSP)
- ▶ Association of Collegiate Conference & Events Directors - International (ACCED-I)
- ▶ Association for Continuing Higher Education
- ▶ Association for Institutional Research
- ▶ The College Board
- ▶ Colorado Plateau Cooperative Ecosystem Studies Unit
- ▶ Council for Advancement and Support of Education
- ▶ EDUCAUSE
- ▶ International Council of Fine Arts Deans
- ▶ International Technology Education Association (ITEA)
- ▶ Microsoft Systems & Developer Network Academic Alliance (MSDNAA)
- ▶ Mountain Plains Adult Education Association
- ▶ National Academic Advising Association (NACADA)

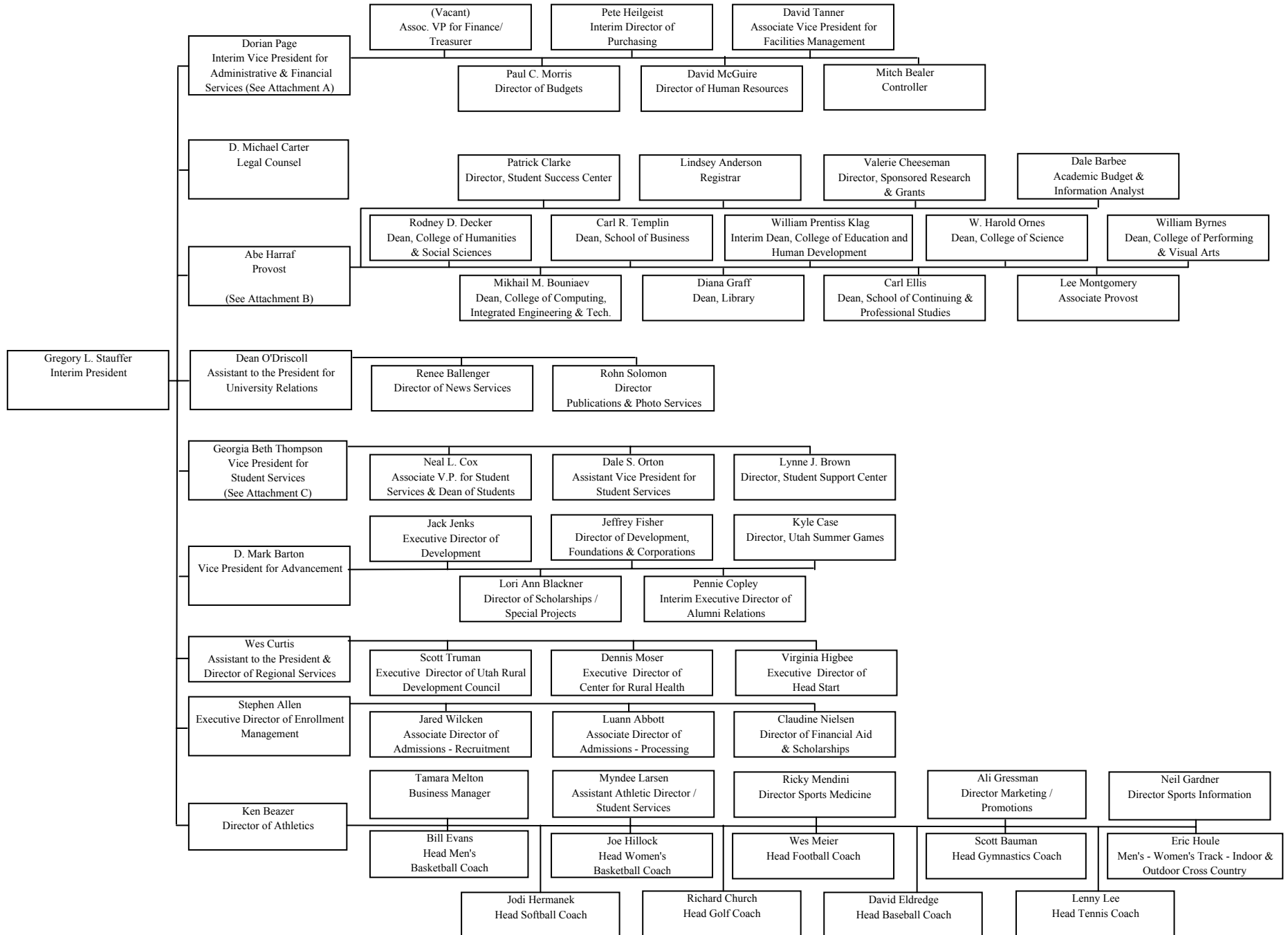
- ▶ National Association of College and University Business Officers
- ▶ National Association of Rural Health
- ▶ National Association of Schools of Dance
- ▶ National Association of Schools of Music
- ▶ National Association of Student Financial Aid Administrators
- ▶ National Athletic Training Association
- ▶ National Business Education Association
- ▶ National Collegiate Athletic Association
- ▶ National Council for the Accreditation of Teacher Education (NCATE)
- ▶ National Institute of Outdoor Drama
- ▶ National League for Nursing
- ▶ National Rural Education Association
- ▶ National Theatre Conference
- ▶ North American Association of Summer Sessions
- ▶ Novel Education Academic Partner (NEAP)
- ▶ Professional and Organizational Developmental Network in Higher Education (POD)
- ▶ Shakespeare Theatre Association of America
- ▶ Society for College and University Planning
- ▶ South Eastern Theatre Conference
- ▶ Theatre Communications Group
- ▶ United States Institute for Theatre Technology
- ▶ University Continuing Education Association (UCEA)
- ▶ Utah Academic Library Consortium
- ▶ Utah Association for Adult, Community & Continuing Education (UAACCE)
- ▶ Western Association of Summer Session Administrators
- ▶ Western Interstate Commission for Higher Education (WICHE)

* The above listing is only to be representative of the major types of memberships held by the University.

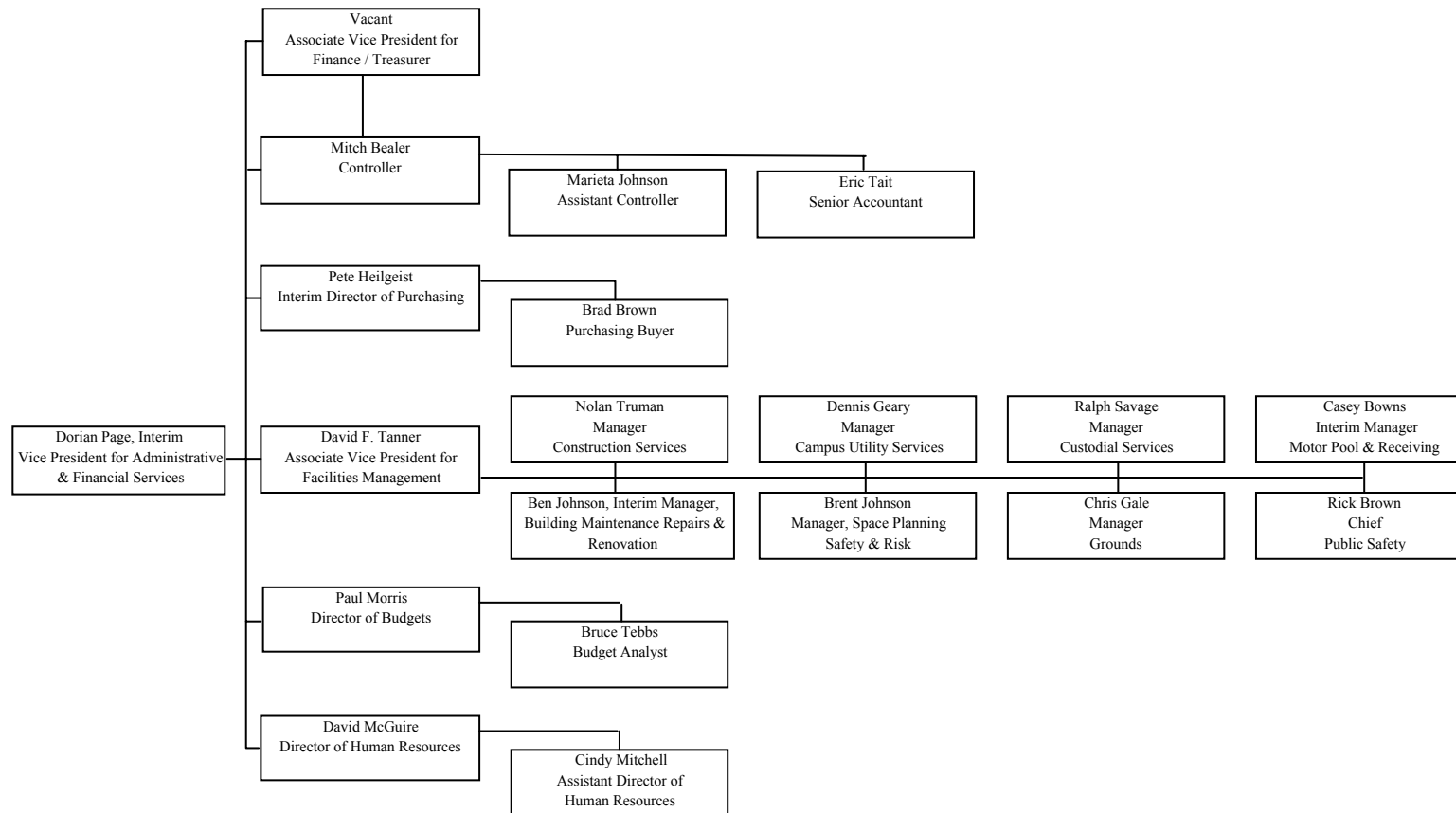
Southern Utah University Presidents

Milton Bennion	1897-1900
J. Reuben Clark, Jr.	1900-1901
Nathan T. Porter	1901-1904
George W. Decker	1904-1913
Roy F. Homer	1913-1921
Peter V. Cardon	1921-1922
J. Howard Maughan	1922-1929
Henry Oberhansley	1929-1945
H. Wayne Driggs	1945-1951
Daryl Chase	1951-1953
Royden C. Braithwaite	1955-1978
Orville D. Carnahan	1978-1981
Gerald R. Sherratt	1982-1997
Steven D. Bennion	1997-

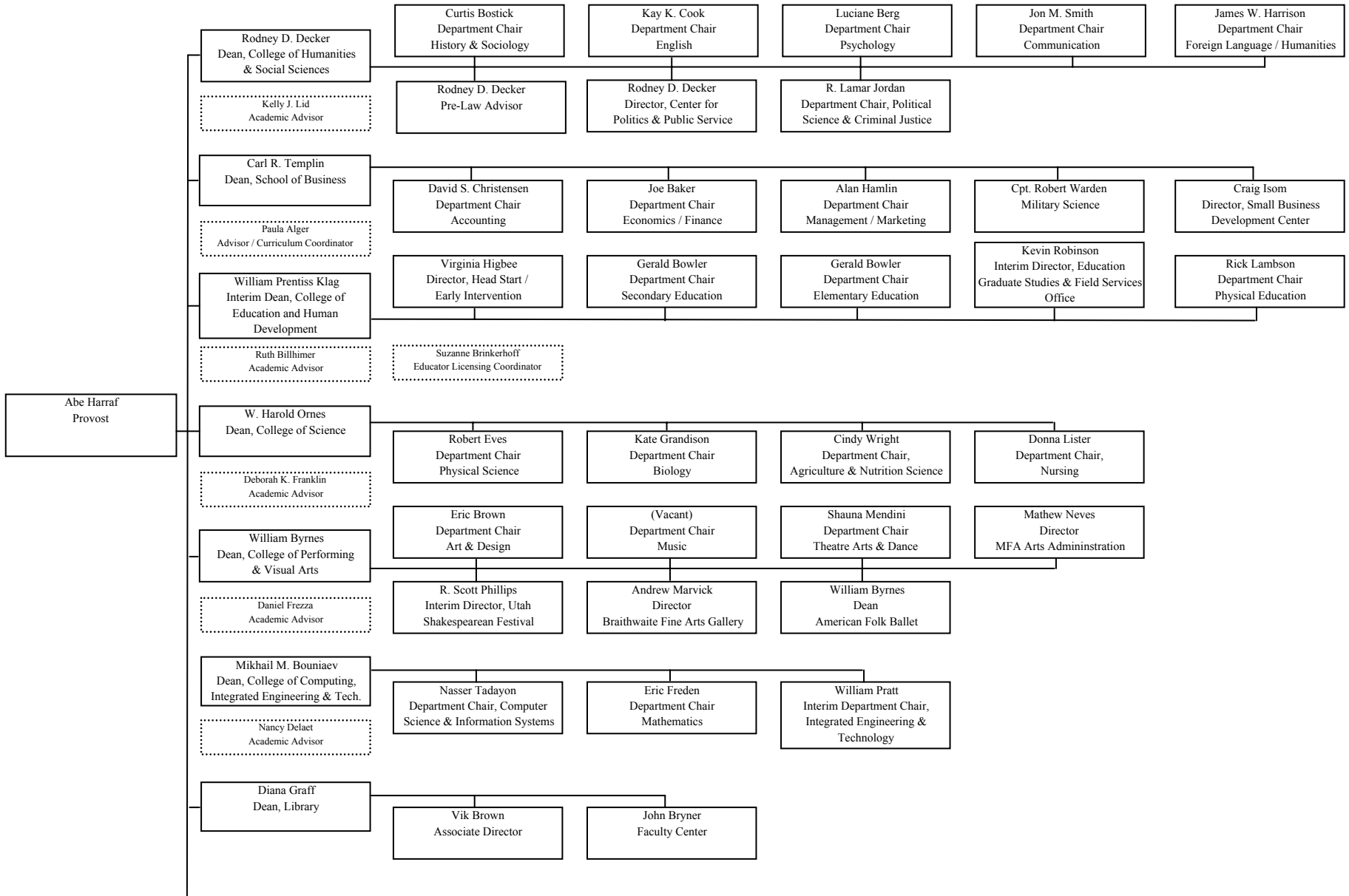
Southern Utah University 2006-07 Administrative Organizational Chart



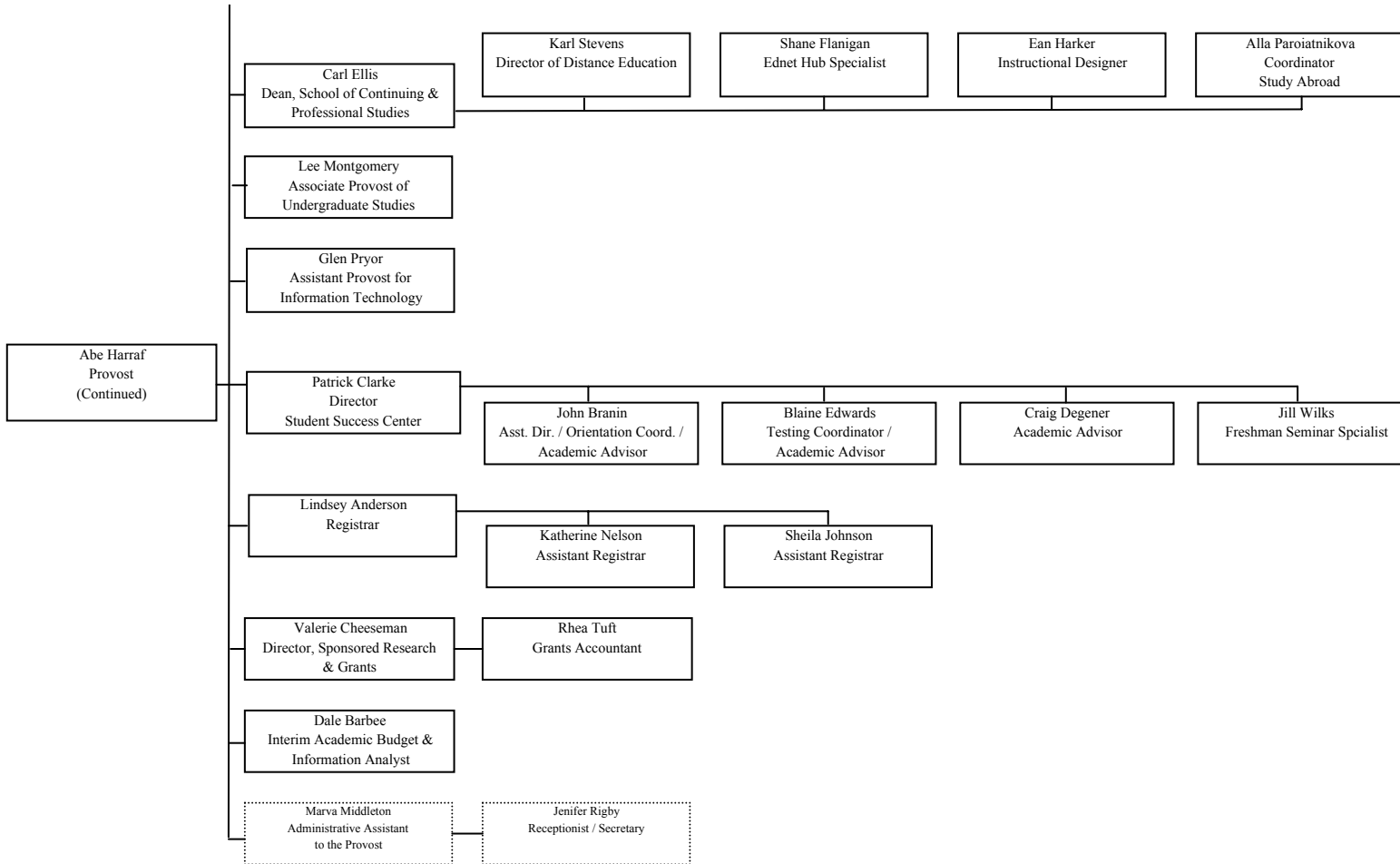
Southern Utah University
2006-07 Vice President for Administrative & Financial Services Organizational Chart
Attachment A



Southern Utah University
2006-07 Provost Organizational Chart
Attachment B



Southern Utah University
2006-07 Provost Organizational Chart
Attachment B



Southern Utah University
2006-07 Vice President for Student Services Organizational Chart
Attachment C

