

Southern Utah University
Full-time Instructional Faculty Headcount
by College and Department, Fall 2006-07 through 2008-09

College	Department	2006-07	2007-08	2008-09
Business	Accounting & Information Systems	5	5	6
	Economics & Finance	7	8	7
	Management & Marketing	10	10	11
	Military Science			
	Total	22	23	24
Computing, Integrated Engineering & Technology	Computer Sci & Information Systems	9	9	9
	Integrated Engineering & Tech	10	11	11
	Mathematics	13	12	12
	Total	32	32	32
Education	Elementary Education	10	18	14
	Physical Education	5	6	6
	Outdoor Recreation		1	1
	Secondary Education	6	6	9
	Graduate/Field Studies	6	1	1
	Total	27	32	31
Humanities & Social Sciences	Communication	10	11	11
	English	13	14	15
	Foreign Languages & Humanities	9	9	9
	History & Sociology	8	10	10
	Political Science & Criminal Justice	8	9	9
	Psychology	8	7	8
	Total	56	60	62
Library	Library	9	8	9
Total		9	8	9
Performing & Visual Arts	Art Design	8	9	10
	Master's of Fine Arts	1	1	1
	Music	9	9	9
	Theatre Arts	9	10	11
	Total	27	29	31
Science	Agriculture & Nutrition Sci	6	6	6
	Biology	12	13	11
	Nursing	9	8	9
	Physical Science	15	15	16
	Total	42	42	42
Grand Total		215	226	231

UTAH SYSTEM OF HIGHER EDUCATION
2009-10 BUDGET REQUEST
FORM S-11, Page 1

BRT

435-865-8729

Budget Related and Self Support Credit Related Instructional Faculty Teaching Workload

INSTITUTION: Southern Utah University

Enter data in green cells only

Fall 2008

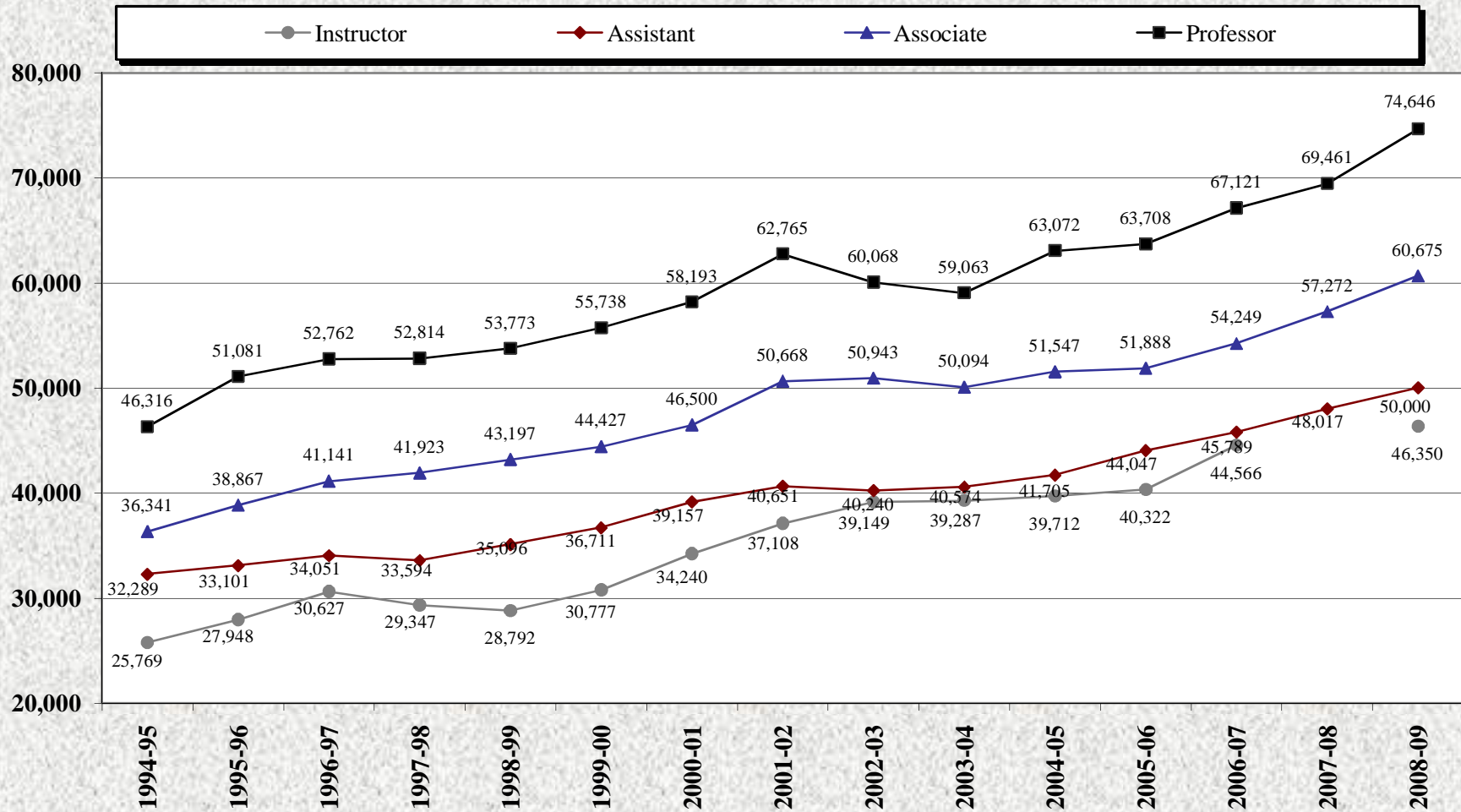
1. FACULTY FTE CENSUS COUNT

A. Total Institutional Instructional Faculty

238.3

Total Faculty Contact Hours	3,656.20	Total Instructional Credit Hours	3,918.20
Total Faculty FTE	238.3	Total Faculty FTE	238.3
Average Teaching Load per FTE Faculty	15.3	Average SCH per FTE Faculty	16.4

Average Full-time Faculty Salaries by Rank 1994-95 to 2008-09

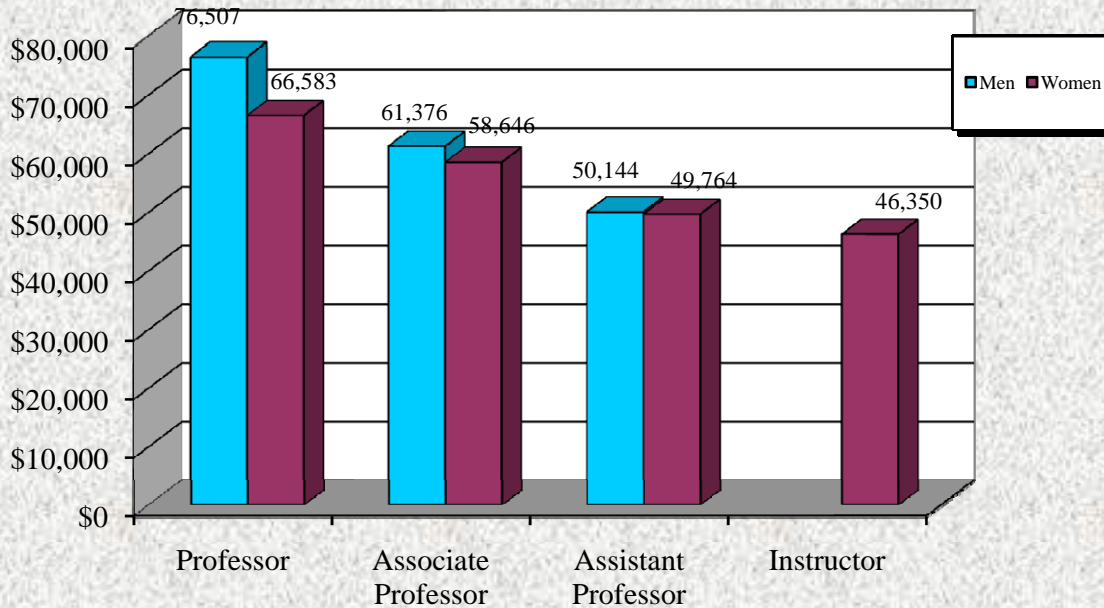


Source: IPEDS Faculty Salaries Report.

* Prior to 2000-01 information obtained from Human Resources Records

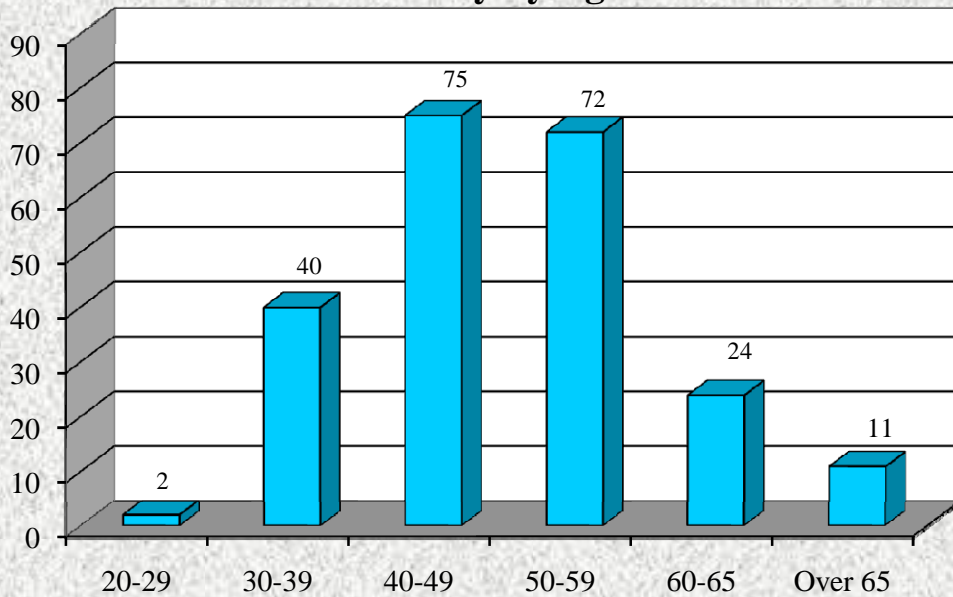
Fact Book, B Rayburn, Associate Provost's Office, 1/15/2009

Average Full-time Faculty Salaries by Rank and Gender 2008-09



Source: IPEDS Human Resource Report

Southern Utah University Full-Time Faculty by Age 2008-09



Source: SUU Human Resources Records

**Characteristics of Full-Time Faculty & Staff by Age
2008-09**

Program	Total	Over 65		60-65		50-59		40-49		30-39		20-29	
	#	#	%	#	%	#	%	#	%	#	%	#	%
Humanities and Social Science	58	2	3.4%	8	13.8%	15	25.9%	21	36.2%	12	20.7%	0	0.0%
Business	24	2	8.3%	4	16.7%	8	33.3%	8	33.3%	2	8.3%	0	0.0%
Education	31	0	0.0%	2	6.5%	18	58.1%	9	29.0%	2	6.5%	0	0.0%
Science	47	3	6.4%	3	6.4%	16	34.0%	14	29.8%	11	23.4%	0	0.0%
Library	7	1	14.3%	2	28.6%	1	14.3%	3	42.9%	0	0.0%	0	0.0%
Performing and Visual Arts	28	1	3.6%	3	10.7%	5	17.9%	11	39.3%	6	21.4%	2	7.1%
Computing, Integrated Engineering & Technology	29	2	6.9%	2	6.9%	9	31.0%	9	31.0%	7	24.1%	0	0.0%
Academic and Admin. Support	395	9	2.3%	49	12.4%	99	25.1%	97	24.6%	86	21.8%	55	13.9%
SUU	619	20	3.2%	73	11.8%	171	27.6%	172	27.8%	126	20.4%	57	9.2%

**Characteristics of Full-Time Faculty & Staff by Length of SUU Service
2008-09**

Program	Total	0-5 Years		6-10 Years		11-15 Years		16-20 Years		21-25 Years		Over 25 Years	
	#	#	%	#	%	#	%	#	%	#	%	#	%
Humanities and Social Science	58	24	41.4%	11	19.0%	9	15.5%	6	10.3%	3	5.2%	5	8.6%
Business	24	7	29.2%	6	25.0%	5	20.8%	2	8.3%	3	12.5%	1	4.2%
Education	31	14	45.2%	8	25.8%	4	12.9%	3	9.7%	0	%	2	6.5%
Science	47	27	57.4%	10	21.3%	3	6.4%	4	8.5%	1	2.1%	2	4.3%
Library	7	1	14.3%	1	14.3%	1	14.3%	1	14.3%	1	14.3%	2	28.6%
Performing and Visual Arts	28	15	53.6%	4	14.3%	4	14.3%	3	10.7%	1	3.6%	1	3.6%
Computing, Integrated Engineering & Technology	29	14	48.3%	9	31.0%	2	6.9%	1	3.4%	1	3.4%	2	6.9%
Academic and Admin. Support	395	213	53.9%	55	13.9%	59	14.9%	32	8.1%	21	5.3%	15	3.8%
SUU	619	315	50.9%	104	16.8%	87	14.1%	52	8.4%	31	5.0%	30	4.8%

**Characteristics of Full-Time Faculty by Rank and Gender
2008-09**

Division	Professor		Associate		Assistant		Instructor		Lecturer		Clinical Instructor		Other		Summary	
	Female	Male	Female	Male	Female	Male	Female	Male	Female	Male	Female	Male	Female	Male	Female	Male
Humanities and Social Science	1	12	5	9	7	19	0	0	1	3	0	0	0	1	14	44
Business	0	9	2	9	2	0	0	0	1	0	0	0	0	1	5	19
Education	1	4	4	5	12	5	0	0	0	0	0	0	0	0	17	14
Science	1	2	4	7	10	19	1	0	2	0	0	0	0	1	18	29
Library	0	1	1	4	0	1	0	0	0	0	0	0	0	0	1	6
Performing and Visual Arts	3	1	3	7	1	10	0	0	0	0	0	0	0	3	7	21
Computing, Integrated Engineering & Technology	0	1	1	12	4	8	0	0	1	0	0	0	0	2	6	23
University Total	6	30	20	53	36	62	1	0	5	3	0	0	0	8	68	156

- (1) Faculty on leave of absence are excluded.
- (2) Excludes academic administration and others in non-teaching positions.