



SUMMER 2013 • VOLUME 2 • ISSUE 2

INTRODUCTION
COMMUNITY ENGAGEMENT CENTER
CREATIVE ENGAGEMENT CENTER
OUTDOOR ENGAGEMENT CENTER
LEADERSHIP ENGAGEMENT CENTER
GLOBAL ENGAGEMENT CENTER
SCHOOL OF BUSINESS
COLLEGE OF EDUCATION & HUMAN
DEVELOPMENT
COLLEGE OF HUMANITIES &
SOCIAL SCIENCES
COLLEGE OF PERFORMING &
VISUAL ARTS
COLLEGE OF SCIENCE & ENGINEERING
SCHOOL OF CONTINUING AND
PROFESSIONAL STUDIES
UNIVERSITY COLLEGE
HONORS PROGRAM
LIBRARY
UGRASP
STUDENT SERVICES
FACULTY SCHOLARLY SUPPORT
FUND GRANTS

SUU

S U M M I T

Festival of Excellence

Showcases scholarly
and creative work
of students and
faculty alike





SUMMER 2013 • VOLUME 2 • ISSUE 2

INTRODUCTION

COMMUNITY ENGAGEMENT CENTER

CREATIVE ENGAGEMENT CENTER

OUTDOOR ENGAGEMENT CENTER

LEADERSHIP ENGAGEMENT CENTER

GLOBAL ENGAGEMENT CENTER

SCHOOL OF BUSINESS

COLLEGE OF EDUCATION & HUMAN
DEVELOPMENT

COLLEGE OF HUMANITIES &
SOCIAL SCIENCES

COLLEGE OF PERFORMING &
VISUAL ARTS

COLLEGE OF SCIENCE & ENGINEERING

SCHOOL OF CONTINUING AND
PROFESSIONAL STUDIES

UNIVERSITY COLLEGE

HONORS PROGRAM

LIBRARY

UGRASP

STUDENT SERVICES

FACULTY SCHOLARLY SUPPORT
FUND GRANTS



This table of contents is interactive. If you want to go straight to a specific school, college or area simply mouse over the text and click.

WELCOME

This issue of Summit celebrates SUU's roadmap goal of creating a "campus atmosphere nurturing and promoting intellectual stimulation" (Strategic Initiative 4.4). Both this print issue and the accompanying online issue present a wide range of faculty accomplishment, from publications and presentations, to performances and community engagement.

For many professors, academic conferences are a chance to meet with other professionals, share ideas, and come away invigorated with enthusiasm for their field. This semester, SUU has brought that same enthusiasm to campus through two inaugural programs, the EDGE Leadership Conference and the Festival of Excellence, both of which are described in this issue of Summit.

Additional articles focus on other aspects of our campus culture: scholarly organizations and advanced pedagogy. In Fall 2012, SUU became one of a select number of universities to host Phi Kappa Phi, arguably one of the most prestigious of the collegiate honor societies. This commitment to excellence at SUU is also reflected by the members of the iPadagogy group, a collection of professors dedicated to improving their classroom teaching through innovative uses of iPads in their classroom.

Like the recent Festival of Excellence, this issue of Summit is ultimately about showcasing the incredible richness of talent here on campus, particularly in our faculty.

Regards,

Brad Cook
SUU Provost

Director: Earl Mulderick

Website: <http://suu.edu/uc/ee/cec/>



Community Engagement Center

Center Highlights

For the fourth time, the CEC was awarded the 2013 President's Higher Education Community Service Honor Roll by the Corporation for National and Community Service was given the added honor of with Distinction.

During the month of December, Iron County Holiday Assistance, the county-wide Christmas benefit program overseen by the CEC provided presents to a record 1,061 children from 420 families. The program is a cooperative effort by Care and Share, Toys for Tots, The Volunteer Center of Iron County, and several area business, and managed by the CEC.

Community Engagement Center

2012 Service Learning Fellows

For the sixth successive year, the Faculty Service-Learning Committee announced a new group of *Service-Learning Fellows* to recognize "engaged educators who practice service-learning in an effective manner." Each Fellow received a \$750 honorarium, a handsome commemorative plaque, and public recognition through SUU's *University Journal*, press releases and web site provided plentiful positive publicity. The 2012 honorees were:

- Dr. Matt Barton, Department of Communication
- Professor Nica Clark, Department of Agriculture and Nutrition
- Dr. Britt Mace, Department of Psychology

Publications and Presentations

Pam Branin (associate director) presented two posters at the 15th Annual *Continuums of Service* Conference in Seattle in April 2011.

Pam Branin and Amy Brinkerhoff (former SUU VISTA, now coordinator of the Volunteer Center of Iron County) presented on SUU's oversight of the Iron County Holiday Assistance program at the Utah Campus Compact Engaged Faculty Institute in February 3-4, 2012, Moab, Utah.

Dr. Earl Mulderink presented a poster about SUU's Experiential Education Program at the Association of American Colleges and Universities conference in October 13-14, 2011, Long Beach, Calif.

Dr. Earl Mulderink presented a poster at the 15th Annual *Continuums of Service* Conference in Seattle in April 2011. In addition, he served on the program planning committee and facilitated a roundtable discussion about *A Crucible Moment*, a "national call to action" published in January 2012 by the American Association of Colleges and Universities.

SUU
SUMMIT

ONLINE

SUMMER 2013 • VOLUME 2 • ISSUE 2

INTRODUCTION

COMMUNITY ENGAGEMENT CENTER

CREATIVE ENGAGEMENT CENTER

OUTDOOR ENGAGEMENT CENTER

LEADERSHIP ENGAGEMENT CENTER

GLOBAL ENGAGEMENT CENTER

SCHOOL OF BUSINESS

COLLEGE OF EDUCATION & HUMAN
DEVELOPMENT

COLLEGE OF HUMANITIES &
SOCIAL SCIENCES

COLLEGE OF PERFORMING &
VISUAL ARTS

COLLEGE OF SCIENCE & ENGINEERING

SCHOOL OF CONTINUING AND
PROFESSIONAL STUDIES

UNIVERSITY COLLEGE

HONORS PROGRAM

LIBRARY

UGRASP

STUDENT SERVICES

FACULTY SCHOLARLY SUPPORT
FUND GRANTS



SUMMER 2013 • VOLUME 2 • ISSUE 2

- INTRODUCTION
- COMMUNITY ENGAGEMENT CENTER
- CREATIVE ENGAGEMENT CENTER
- OUTDOOR ENGAGEMENT CENTER
- LEADERSHIP ENGAGEMENT CENTER
- GLOBAL ENGAGEMENT CENTER
- SCHOOL OF BUSINESS
- COLLEGE OF EDUCATION & HUMAN DEVELOPMENT
- COLLEGE OF HUMANITIES & SOCIAL SCIENCES
- COLLEGE OF PERFORMING & VISUAL ARTS
- COLLEGE OF SCIENCE & ENGINEERING
- SCHOOL OF CONTINUING AND PROFESSIONAL STUDIES
- UNIVERSITY COLLEGE
- HONORS PROGRAM
- LIBRARY
- UGRASP
- STUDENT SERVICES
- FACULTY SCHOLARLY SUPPORT FUND GRANTS

In order to ensure the success of the program, the CEC coordinated fund and toy raising events, worked with business and non-profit sponsors, and managed the application and toy distribution process. Under the management of CEC staff, the program has gone to a more streamlined application process, as well as providing parents the opportunity to select the gifts their children receive.



2013 Service Learning Fellows Jacqueline Grant (top) & Peggy Wittwer

Leadership and Awards

Dr. Earl Mulderink was selected to represent SUU on the Utah Campus Compact's Steering Committee, chaired by President Matthew Holland of Utah Valley University, which met in Fall 2012.

Dr. Earl Mulderink also served on conference planning committees for the 15th Annual Continuums of Service Conference (April 2013 in Portland), sponsored by the Western Campus Compact Consortium, and the Utah Campus Compact Engaged Faculty Institute (February 2013 in Moab).

The Community Engagement Center (CEC) received an award of appreciation from the Cedar Band of Paiutes for its work with community youth. Student volunteers from the CEC partnered with the Paiute Drug Elimination Tutoring Program to staff tutoring sessions for children, ages five to fifteen.

Utah Campus Compact Engaged Faculty Institute

Supporting its mission as a Carnegie community engaged institution, SUU sent a ten-person team to the Utah Campus Compact Engaged Faculty Institute in Moab, Utah, on February 8-9, 2013. The two-day gathering focused on "The Engaged Campus" where SUU had the largest contingent of any attending universities. The following SUU faculty presented:

Dr. Steve Barney (psychology), SUU's faculty senate president, provided an overview of leave, rank and tenure policies that support engaged faculty and scholars.

Dr. Lisa Assante (business) and Dr. Wynne Summers (English) presented a panel exploring how faculty use visual media and artifacts to transform service-learning projects.

Dr. Earl Mulderink (CEC director) and Dr. Briget Eastep (Outdoor Engagement Center director) explained the evolution of SUU's experiential education program, EDGE (Education Designed to Give Experience), and the five distinctive "engagement centers."

Professor Nica Clark presented a poster on her service-learning course in community nutrition.

Pam Branin (CEC associate director) publicized SUU's unique "Service Saturday," an event held every August that helps students get involved in community service.

Director Todd Peterson

Website: <http://suu.edu/uc/ee/creative/>



TEDxSUU setup on the Church Auditorium stage

Creative Engagement Center

The Creative Engagement Center manages the “Creativity and Innovation” track within the SUU EDGE Program and advises students who have chosen a Creativity and Innovation EDGE Track. In addition to curricular matters, the Center and its advisory council also develops and oversees creativity based co-curricular activities. We also provide access to networks and resources for SUU students, faculty, and community members.

The Center recently partnered with the SUU’s Honors department to host a TEDxSUU event. TEDx events are independently organized and follow in the spirit of the global TED conferences that take place twice a year. TEDx events are based on the belief that ideas are powerful and can initiate change in a community.

Six speakers spoke at SUU’s TEDx event on a variety of topics, ranging from the anatomy of an apology, how thinking outside the box requires the existence of a box, the connections between science and fantasy novels, what has happened to male identity, and how ideas can be like the zombie apocalypse. The speakers were **Dr. Kevin Stein** (communication), **Dr. Helen Boswell** (biology), **Dr. Kyle Bishop** (English), **Michael Bahr** (Utah Shakespeare Festival education director), Melanie Skankey (art educator), and Chase Harrison (SUU student).

The event also featured a performance from the SUU Percussion Ensemble and a modern dance piece from SUU student dancers. Video content from TED.com was included in the night’s presentations.

The event was recorded and videos are available on YouTube. The event was livestreamed giving viewers a chance to watch the event from off campus. Next year’s event is already in the works. For information on this year’s event and future events, use the following contact information.

Facebook: facebook.com/tedxsuu

Twitter: @tedxsuu and/or #tedxsuu

Web: suu.edu/tedx



SUMMER 2013 • VOLUME 2 • ISSUE 2

INTRODUCTION

COMMUNITY ENGAGEMENT CENTER

CREATIVE ENGAGEMENT CENTER

OUTDOOR ENGAGEMENT CENTER

LEADERSHIP ENGAGEMENT CENTER

GLOBAL ENGAGEMENT CENTER

SCHOOL OF BUSINESS

COLLEGE OF EDUCATION & HUMAN DEVELOPMENT

COLLEGE OF HUMANITIES & SOCIAL SCIENCES

COLLEGE OF PERFORMING & VISUAL ARTS

COLLEGE OF SCIENCE & ENGINEERING

SCHOOL OF CONTINUING AND PROFESSIONAL STUDIES

UNIVERSITY COLLEGE

HONORS PROGRAM

LIBRARY

UGRASP

STUDENT SERVICES

FACULTY SCHOLARLY SUPPORT
FUND GRANTS



SUMMER 2013 • VOLUME 2 • ISSUE 2

INTRODUCTION
COMMUNITY ENGAGEMENT CENTER
CREATIVE ENGAGEMENT CENTER
OUTDOOR ENGAGEMENT CENTER
LEADERSHIP ENGAGEMENT CENTER
GLOBAL ENGAGEMENT CENTER
SCHOOL OF BUSINESS
COLLEGE OF EDUCATION & HUMAN DEVELOPMENT
COLLEGE OF HUMANITIES & SOCIAL SCIENCES
COLLEGE OF PERFORMING & VISUAL ARTS
COLLEGE OF SCIENCE & ENGINEERING
SCHOOL OF CONTINUING AND PROFESSIONAL STUDIES
UNIVERSITY COLLEGE
HONORS PROGRAM
LIBRARY
UGRASP
STUDENT SERVICES
FACULTY SCHOLARLY SUPPORT
FUND GRANTS

Director: Briget Eastep

Website: <http://suu.edu/uc/ee/outdoor/>



Harry Reid Outdoor Engagement Center

Center Highlights

The Harry Reid Outdoor Engagement Center is working on creating a process for faculty to get risk management, logistical, and monetary support for outdoor learning experiences. We will roll this out Fall 2013.

Harry Reid Outdoor Engagement Center

The Harry Reid Outdoor Engagement Center (HROEC) aims to involve SUU students and faculty in the outdoors at three levels. The first is recreational—"pure fun," as Director Briget Eastep terms it. The second level is that of skill development, providing opportunities for life-long learning, technical skills, leadership, and outdoor skills. The third level is career development, furthering an interest in geology, agricultural sciences and outdoor recreation.

Presentations

Dr. Briget Eastep presented "Outdoor Scholarship" at the SUU Festival of Excellence April 2013.

Seth Ohms (Intergovernmental Internship Cooperative (IICC) campus coordinator for HROEC) presented "SUU's IIC EDGE" at the SUU Festival of Excellence, April 2013.

Projects

The Bryce Canyon faculty retreat was held on April 13 as a day event open to families. The goal of the excursion was to promote interdisciplinary teaching, service learning and research by gathering in a beautiful place and interacting with Bryce Canyon National Park staff. The event included lunch and a guided hike.

The Intergovernmental Internship Cooperative is preparing for another summer season with internship opportunities in Zion, Bryce, Grand Canyon Parashant, Pipe Springs, Great Basin, local BLM offices, and the Dixie National Forest.

Pacesetters, a student outdoor leadership club, offered an outdoor activities every weekend and Wednesday this semester. In addition, Pacesetters will lead an Adventure Orientation for new students August 17–21. Adventure orientations have made a significant difference in the lives of thousands of college students and leaders across the country and administrators are excited to bring this opportunity to SUU students.



SUMMER 2013 • VOLUME 2 • ISSUE 2

INTRODUCTION
COMMUNITY ENGAGEMENT CENTER
CREATIVE ENGAGEMENT CENTER
OUTDOOR ENGAGEMENT CENTER
LEADERSHIP ENGAGEMENT CENTER
GLOBAL ENGAGEMENT CENTER
SCHOOL OF BUSINESS
COLLEGE OF EDUCATION & HUMAN
DEVELOPMENT
COLLEGE OF HUMANITIES &
SOCIAL SCIENCES
COLLEGE OF PERFORMING &
VISUAL ARTS
COLLEGE OF SCIENCE & ENGINEERING
SCHOOL OF CONTINUING AND
PROFESSIONAL STUDIES
UNIVERSITY COLLEGE
HONORS PROGRAM
LIBRARY
UGRASP
STUDENT SERVICES
FACULTY SCHOLARLY SUPPORT
FUND GRANTS

Outdoor EDGE projects have been inspiring this year with students participating in undergraduate research, completing internships and volunteering with public lands (through the IIC), working seasonally with scouts and other outdoor organizations, planning significant expeditions, leading outdoor clubs, creating art inspired by natural landscapes, and leading peers and youth in outdoor discovery excursions.

The Outdoor Education Series has also had another successful semester with guests from across the region: www.suu.edu/uc/ee/outdoor/documents/OESSpring2013.pdf.

Finally, six members of the Outdoor Engagement Faculty Committee traveled to Northern Arizona University and Prescott College to investigate how these two campuses practice outdoor engagement. The trip was a great learning experience that helped faculty focus on SUU's efforts. The faculty members included **Dr. Briget Eastep**, **Dr. Emily Dean**, assistant professor of anthropology; **Dr. Johnny McClean**, assistant professor of geology; **Emilee Ballard**, Student Services; **Anne Smith**, instructor of outdoor recreation; and **Jake Manning**, program coordinator, Outdoor Recreation in Parks and Tourism.



SUU students in Labyrinth Canyon during a Selected Field Trips course as part of a growing partnership between the Geology and Outdoor Recreation & Parks Tourism programs through the Harry Reid Outdoor Engagement Center

Interim Director: Katy Herbold

Website: <http://suu.edu/uc/ee/leadership/>



Leadership Engagement Center

Center Highlights

The Leadership Engagement Center hosted its first-ever Leadership Conference, "Lead, Share, Build: Together, Today, Tomorrow" February 28-March 1, 2013. Students and faculty presented on a variety of topics, from business leadership to education leadership, from the roles of women in leadership to the value of communication. More details about the leadership conference can be found in the print version of Summit, or online here: <http://www.suunews.com/news/2013/mar/03/suu-hosts-leadership-conference/>

To learn more about the Leadership Engagement Center or find out more about LEC events, stop by 561 W. University Blvd. or visit the LEC social media sites: On Facebook, SUU LEC; twitter.com/SUULEC; or suulec.blogspot.com. Calling 435-586-1910 will put you in touch with Brandy Holm, Student Liaison, Cindi Endter, Program Specialist, or Interim Director, Dr. Katy Herbold.

Leadership Engagement Center

This is the second year for the newly launched Leadership Engagement Center (LEC). The primary function of the LEC is to support students who are launching their EDGE Projects with a focus on leadership. Secondary to that, the LEC serves as an interactive, dynamic influence for SUU and the community to increase leadership understanding and skills in individuals, groups and organizations.

Projects

LEC administrators planned a study abroad opportunity for Maymester 2013, "**Rebels of the Renaissance**," which took students and other participants to various cities in Italy to study the leaders from that era whose leadership has had a lasting change in the world.



Dr. Katy Herbold addresses attendees at the University's first Leadership Conference

SUU
SUMMIT

ONLINE

SUMMER 2013 • VOLUME 2 • ISSUE 2

INTRODUCTION

COMMUNITY ENGAGEMENT CENTER

CREATIVE ENGAGEMENT CENTER

OUTDOOR ENGAGEMENT CENTER

LEADERSHIP ENGAGEMENT CENTER

GLOBAL ENGAGEMENT CENTER

SCHOOL OF BUSINESS

COLLEGE OF EDUCATION & HUMAN
DEVELOPMENT

COLLEGE OF HUMANITIES &
SOCIAL SCIENCES

COLLEGE OF PERFORMING &
VISUAL ARTS

COLLEGE OF SCIENCE & ENGINEERING

SCHOOL OF CONTINUING AND
PROFESSIONAL STUDIES

UNIVERSITY COLLEGE

HONORS PROGRAM

LIBRARY

UGRASP

STUDENT SERVICES

FACULTY SCHOLARLY SUPPORT
FUND GRANTS



SUMMER 2013 • VOLUME 2 • ISSUE 2

INTRODUCTION
COMMUNITY ENGAGEMENT CENTER
CREATIVE ENGAGEMENT CENTER
OUTDOOR ENGAGEMENT CENTER
LEADERSHIP ENGAGEMENT CENTER
GLOBAL ENGAGEMENT CENTER
SCHOOL OF BUSINESS
COLLEGE OF EDUCATION & HUMAN DEVELOPMENT
COLLEGE OF HUMANITIES & SOCIAL SCIENCES
COLLEGE OF PERFORMING & VISUAL ARTS
COLLEGE OF SCIENCE & ENGINEERING
SCHOOL OF CONTINUING AND PROFESSIONAL STUDIES
UNIVERSITY COLLEGE
HONORS PROGRAM
LIBRARY
UGRASP
STUDENT SERVICES
FACULTY SCHOLARLY SUPPORT FUND GRANTS

Director: Kurt Harris

Website: <http://suu.edu/uc/ee/global/>



Sargon Heinrich
Global Engagement Center

Center Highlights

In December 2012, **President Michael Benson** signed into effect an exchange agreement between SUU and the University College Zealand (Denmark) as well as a Memorandum of Understanding between SUU and Ariel University Center of Samaria (Israel).

Sargon Heinrich Global Engagement Center

Academic Conference

The Sargon Heinrich Global Engagement Center (GEC) hosted its third annual conference February 7-8, 2013. This year's topic was "Socio-economic Development in Africa: Challenges & Opportunities." In addition to keynote speaker Hassan Jallow, who is the lead prosecutor in the Rwanda war crimes trials, conference presenters included academics and professionals from the United Nations Educational, Scientific and Cultural Organization, the National Defense University, Interamerican University, University of California-Berkeley, Rutgers, University of Utah, and SUU. More info here: <http://www.suu.edu/news/2013/01/chief-prosecutor-in-rwanda-war-trials-coming-to-suu.html> and <http://www.suu.edu/academics/studyabroad/conference/>. A summary of Hassan Jallow's speech is found here: <http://www.suunews.com/news/2013/feb/10/prosecutor-talks-economics/> along with a video of a question and answer session with students: <http://www.suunews.com/videos/2013/feb/11/1082/>.

Faculty-led Study Abroad Programs

In May and June 2013, SUU students visited Austria, Botswana, France, Ghana, Guatemala, Ireland, Italy, Japan, Nepal, Spain, Swaziland and United Kingdom through the GEC.

Student Exchange Programs

In Fall 2012, 12 SUU students attended universities in China, France, Hungary, Ireland, the Netherlands, South Korea, Spain and Taiwan.

In that same semester 11 SUU students attended universities in the U.S. and Canada on the National Student Exchange Program in Fall 2012. They studied at Indiana University of Pennsylvania, Montana State University, Portland State Univ., the Univ. of Alabama, Univ. of Calgary, UMass Boston, Univ. of New Hampshire, Univ. of Oregon, Univ. of Wyoming, Western Oregon Univ., and William Paterson Univ. of New Jersey. Seven of these students are continuing their studies at the host universities in the spring semester.



SUMMER 2013 • VOLUME 2 • ISSUE 2

INTRODUCTION

COMMUNITY ENGAGEMENT CENTER

CREATIVE ENGAGEMENT CENTER

OUTDOOR ENGAGEMENT CENTER

LEADERSHIP ENGAGEMENT CENTER

GLOBAL ENGAGEMENT CENTER

SCHOOL OF BUSINESS

COLLEGE OF EDUCATION & HUMAN
DEVELOPMENT

COLLEGE OF HUMANITIES &
SOCIAL SCIENCES

COLLEGE OF PERFORMING &
VISUAL ARTS

COLLEGE OF SCIENCE & ENGINEERING

SCHOOL OF CONTINUING AND
PROFESSIONAL STUDIES

UNIVERSITY COLLEGE

HONORS PROGRAM

LIBRARY

UGRASP

STUDENT SERVICES

FACULTY SCHOLARLY SUPPORT
FUND GRANTS

An additional 13 SUU students departed to study abroad in the Spring 2013 semester in Austria, Germany, Greece, Ireland, Italy and Spain.

15 students—from Austria, Estonia, France, Germany, Mexico, Morocco, the Netherlands, and Taiwan—studied on exchange at SUU in the Fall 2012 semester. Three of these students from Morocco and the Netherlands, decided to stay at SUU for the next semester.

SUU welcomed to campus 12 new exchange students for the Spring 2013 semester. They came from China, Finland, France, Germany, Mexico, the Netherlands and Taiwan.

Campus Visits

November 11-13, 2012, SUU hosted on campus Japanese visitors from Okinawa International University (OKIU). The purpose of the visit was to discuss details on a pending exchange agreement and to familiarize OKIU representatives with SUU and Cedar City.

November 14-16, 2012, SUU hosted Matthew Marshall, Dean of the School of Creative & Performing Arts at Central Queensland University (Australia). In addition to visiting with SUU faculty in the College of Performing & Visual, Dean Marshall gave a classical guitar recital on campus.

SUU welcomed Judith Brown, director of the Theatre Program at Central Queensland University (Australia) January 6-24, 2013, to learn more about SUU's performing arts programs and to find ways for SUU and CQU students and faculty to collaborate on projects.

The Global Engagement Center and the Beverley Taylor Sorenson College of Education & Human Development hosted three visitors from Hokkaido University of Education (HUE) in Japan in January 2013. SUU and HUE are negotiating an exchange agreement that will include opportunities for HUE students to take ESL classes at SUU and for SUU students to take Japanese language and culture classes at HUE.

In February 2013, the GEC and the SUU School of Business hosted a campus visit by Richard Barnes, head of International Academic Development at Robert Gordon University in Scotland. SUU and RGU are working toward the signing of an exchange agreement between the two universities.

Partner Programs

In September 2012, GEC coordinator **Tessa McNeel** attended the European Association of International Educators Conference in Dublin, Ireland, to meet with representatives of current and potential partner universities.

In October 2012, **Director Dr. Kurt Harris** visited Tallinn Tech University (Estonia) and Oulu University (Finland) to discuss plans for expanding programs beyond student exchange, including the exchange of faculty.

A delegation of SUU faculty and staff, led by SUU's Director of Asian Operations **PC Hui**, visited 14 institutions in China in January 2013. In addition to recruiting students at several high schools, **Dean Jim McDonald, Director Kurt Harris**, and professors **Keith Bradshaw, Scott Hansen**, and **Pat Keehley** negotiated agreements with universities and colleges in Shanghai, Wuhan and Changsha.

Construction management professor **Boyd Fife** traveled to Tanzania in January and February 2013, to visit area university officials and businessmen with the intent to explore the possibility of employing SUU students and graduates in construction projects there.



SUMMER 2013 • VOLUME 2 • ISSUE 2

INTRODUCTION

COMMUNITY ENGAGEMENT CENTER

CREATIVE ENGAGEMENT CENTER

OUTDOOR ENGAGEMENT CENTER

LEADERSHIP ENGAGEMENT CENTER

GLOBAL ENGAGEMENT CENTER

SCHOOL OF BUSINESS

COLLEGE OF EDUCATION & HUMAN
DEVELOPMENTCOLLEGE OF HUMANITIES &
SOCIAL SCIENCESCOLLEGE OF PERFORMING &
VISUAL ARTS

COLLEGE OF SCIENCE & ENGINEERING

SCHOOL OF CONTINUING AND
PROFESSIONAL STUDIES

UNIVERSITY COLLEGE

HONORS PROGRAM

LIBRARY

UGRASP

STUDENT SERVICES

FACULTY SCHOLARLY SUPPORT
FUND GRANTS

Dean: Carl Templin

Website: <http://suu.edu/business/>Dixie Leavitt Business Building with The
Carter Carillon in the background

School of Business Highlights

Dr. Jeff Barnes won Outstanding Educator from the Utah Association of CPAs, 2012.

Students in **Dr. Joe Baker's** ECON 3480 course spent the semester performing a cost/benefit analysis on Cedar City's Aquatic Center. <http://www.suunews.com/news/2012/dec/05/study-finds-center-beneficial-city/>

SCHOOL OF BUSINESS

Accounting

Publications and Presentations

Dr. David Christensen, Professor Greg Powell (marketing), and **Dr. David Rees** published "Teaching Notes to Small Things First Things – A Pedagogical Tool for Accounting Students" in *Mountain Plains Journal of Business and Economics*, 2012.

Dr. David Christensen, Professor Greg Powell (marketing), and **Dr. David Rees** published "Small Things First Things – A Pedagogical Tool for Accounting Students" in *Mountain Plains Journal of Business and Economics*, 2012.

Dr. Amanda Wilford and **Dr. Lawrence Gordon** (U of Maryland) published "An Analysis of Multiple Consecutive Years of Material Weaknesses in Internal Control" in *The Accounting Review*, Nov. 2012.

Dr. Jeff Barnes, Dr. David Christensen, and **Dr. Taylor Stillman** (management and marketing) presented on "Leadership and Subordinate Effect in Utah's Certified Public Accounting Profession" at the SUU Leadership Conference, February 28-March 1, 2013.

Awards/Accomplishments

Dr. Jeff Barnes' dissertation was accepted by the University of Phoenix. He successfully defended his dissertation on February 7, 2013. His dissertation is titled "Organizational Behavior and Ethical Climate in Utah's Certified Public Accounting Profession" (2007 to 2013).

Dr. Jeff Barnes renewed his CPA licensure for the State of Utah, having earned 80 CPE hours and compliance with other regulatory requirements.

Projects

Dr. Jeff Barnes, Dr. Azmi Ahmad, and **Dr. Roy Johnson** completed SAP Training for Enterprise Resource Planning (ERP) at Chico State University, Summer 2012. Following the training, they submitted a report recommending integrating SAP ERP into School of Business curriculum.

Dr. Robin Boneck and **Dr. Jeff Barnes** advised the Volunteer Income Tax Assistance Program (VITA) on SUU's campus during spring semester. Approximately 750 federal and state returns were filed electronically by 60 participating accounting students, providing 2,200 hours of volunteer service.



SUMMER 2013 • VOLUME 2 • ISSUE 2

INTRODUCTION

COMMUNITY ENGAGEMENT CENTER

CREATIVE ENGAGEMENT CENTER

OUTDOOR ENGAGEMENT CENTER

LEADERSHIP ENGAGEMENT CENTER

GLOBAL ENGAGEMENT CENTER

SCHOOL OF BUSINESS

COLLEGE OF EDUCATION & HUMAN
DEVELOPMENT

COLLEGE OF HUMANITIES &
SOCIAL SCIENCES

COLLEGE OF PERFORMING &
VISUAL ARTS

COLLEGE OF SCIENCE & ENGINEERING

SCHOOL OF CONTINUING AND
PROFESSIONAL STUDIES

UNIVERSITY COLLEGE

HONORS PROGRAM

LIBRARY

UGRASP

STUDENT SERVICES

FACULTY SCHOLARLY SUPPORT
FUND GRANTS

Dr. Robin Boneck and **Dr. Jeff Barnes** gathered research data about 1) students' perceptions regarding usefulness and effectiveness of the VITA service learning experience for academic and professional development and 2) personal feelings about the substantial service opportunity extended to the local community, a pre- and post-gain analysis and content analysis mixed methods research project to include student authorship.

Economics & Finance

Publications and Presentations

Dr. David J. Berri published "Measuring Performance in the National Basketball Association" in *The Handbook of Sports Economics*, ed. Stephen Shmanske and Leo Kahane, Oxford University Press, 2012.

Dr. David J. Berri, along with Brad R. Humphreys and Rob Simmons, published "Valuing the Blind Side: Pay and Performance of Offensive Linemen in the NFL" in *The Economics of Sport*, ed. P. Rodriguez and J. Garcia, Edward Elgar Press, 2012.

Dr. David J. Berri presented "Moneyball and The NBA" at the SUU Festival of Excellence, April 9, 2013.



Dr. David Berri



SUMMER 2013 • VOLUME 2 • ISSUE 2

INTRODUCTION

COMMUNITY ENGAGEMENT CENTER

CREATIVE ENGAGEMENT CENTER

OUTDOOR ENGAGEMENT CENTER

LEADERSHIP ENGAGEMENT CENTER

GLOBAL ENGAGEMENT CENTER

SCHOOL OF BUSINESS

COLLEGE OF EDUCATION & HUMAN
DEVELOPMENT

COLLEGE OF HUMANITIES &
SOCIAL SCIENCES

COLLEGE OF PERFORMING &
VISUAL ARTS

COLLEGE OF SCIENCE & ENGINEERING

SCHOOL OF CONTINUING AND
PROFESSIONAL STUDIES

UNIVERSITY COLLEGE

HONORS PROGRAM

LIBRARY

UGRASP

STUDENT SERVICES

FACULTY SCHOLARLY SUPPORT
FUND GRANTS

Management, Marketing and Hospitality

Publications and Presentations

Dr. Gerald E. Calvasina presented "Protected Concerted Activity under the National Labor Relations Act and Employee use of Social Media" at the Allied Academies Spring International Meeting in Las Vegas, Nev., October 2012.

Dr. Gerald E. Calvasina, with Dr. Richard Calvasina and Dr. Eugene Calvasina, presented "Recent National Labor Relations Board (NLRB) Decisions and Non Union Employers" at the American Society of Business and Behavior Sciences in Las Vegas, Nev., February 2013.

Dr. Gerald E. Calvasina with M. Ramaswamy, R. V. Calvasina, and E. J. Calvasina published "Information Technology Driven Restructuring of Financial/Managerial Accounting Reports" (2012). *Proceedings, IACIS 2012 International Annual Conference*, Myrtle Beach, SC, October 2012.

Dr. Gerald E. Calvasina presented "Protected Concerted Activity under the National Labor Relations Act and Employee use of Social Media: Policy and Practice Issues for Employers" at the SUU Festival of Excellence, April 2013.

Dr. Alan Hamlin presented "Ethical Posture Comparisons between Male and Female International Business Students" at the Annual Conference of the Mountain Plains Management Association in Kearney, Neb., October 2012.

Dr. Alan Hamlin presented "International Student Attitudes Concerning Academic Dishonesty Situations" at the International Conference on Frontiers in Education in Las Vegas, Nev., July 2012.

Dr. Alan Hamlin published "A Comparison of University Efforts to Contain Academic Dishonesty" in the *Journal of Legal, Ethical, and Regulatory Issues*, November 2012.

Dr. Alan Hamlin presented on "Perceptions of International Students about Academic Dishonesty: How Cultural Differences Impact Effective Teaching and Business Abroad" at the SUU Leadership Conference, February 2013.

Dr. Roy Johnson presented "Ethical Leadership at the Top" at the SUU Leadership Conference, February 2013.

Dr. Emmett Steed and **Dr. Wayne Roberts** presented "Differences in Data Collection and Destination: The Southern Utah Visitor Study" at the International Academy of Business and Public Administration Disciplines, Las Vegas, Nev., October 2012.

Dr. Emmett Steed, Dr. Wayne Roberts, and Dr. Briget Eastep presented "Central/Southern Utah Visitor Profile" at the SUU Festival of Excellence, April 2013.

Dr. Emmett Steed and **Dr. Wayne Roberts** presented "Differences in Data Collection and Destination: The Southern Utah Visitor Study" at the SUU Festival of Excellence, April 2013.

Interim Dean: Deb Hill

Website: <http://suu.edu/ed/>



Emma Eccles Jones Education Building
West Entrance

BEVERLEY TAYLOR SORENSON COLLEGE OF EDUCATION & HUMAN DEVELOPMENT

Teacher Education & Family Development

Publications and Presentations

Dr. Bruce O. Barker presented "Research-based Best Practices for Online Teaching and Learning" at the Lilly International Conference on College and University Teaching, Washington, D.C. in June 2012. His research was based on SUU's Master of Education program, which is delivered via distance learning technologies.

Dr. Thomas H. Cunningham presented "Measuring the Ethnocultural Empathy of Candidates for ESL Endorsement" at the Intermountain Teachers of English to Speakers of Other Languages (ITESOL) Conference, Utah Valley University, Orem, Utah October 2012.

Professor Rea Gubler and **Professor Artis Grady** presented "Bread, A Common Cultural Thread for All Ages" at the SUU Festival of Excellence, April 2013.

Professor Karen Houser presented "Full 'STEAM' Ahead: An Early Childhood Experience with STEM (Plus Art)" at the SUU Festival of Excellence, April 2013.

Dr. Michiko Kobayashi presented "International Students' Perceptions of Online Learning: Benefits and Challenges" at the SUU Festival of Excellence, April 2013.

Dr. Michael McGarvey presented "Connecting Brain Research to the Classroom," at the 104th National Rural Education Association (NREA) Annual Convention and Research Symposium, in Cincinnati, Ohio, October 2012.

Dr. Michael McGarvey presented "Connecting Brain Research to the Classroom" at the SUU Festival of Excellence, April 2013.

Professor Kim Mendenhall presented "Reaching Struggling Readers with the ACCEPT Intervention" at the SUU Festival of Excellence, April 2013.

College Highlights

Dr. Tony Pellegrini and **Dr. Katy Herbold** have been providing professional development courses for Utah teachers. This has been done as a service project through the Utah State Office of Education On Track professional development system. They are providing courses for interested teachers free of charge on several topics, including classroom management, working with students from poverty, use of data to guide instruction and authentic instruction, among others.

SUU
SUMMIT

ONLINE

SUMMER 2013 • VOLUME 2 • ISSUE 2

INTRODUCTION

COMMUNITY ENGAGEMENT CENTER

CREATIVE ENGAGEMENT CENTER

OUTDOOR ENGAGEMENT CENTER

LEADERSHIP ENGAGEMENT CENTER

GLOBAL ENGAGEMENT CENTER

SCHOOL OF BUSINESS

COLLEGE OF EDUCATION & HUMAN
DEVELOPMENT

COLLEGE OF HUMANITIES &
SOCIAL SCIENCES

COLLEGE OF PERFORMING &
VISUAL ARTS

COLLEGE OF SCIENCE & ENGINEERING

SCHOOL OF CONTINUING AND
PROFESSIONAL STUDIES

UNIVERSITY COLLEGE

HONORS PROGRAM

LIBRARY

UGRASP

STUDENT SERVICES

FACULTY SCHOLARLY SUPPORT
FUND GRANTS



SUMMER 2013 • VOLUME 2 • ISSUE 2

- INTRODUCTION
- COMMUNITY ENGAGEMENT CENTER
- CREATIVE ENGAGEMENT CENTER
- OUTDOOR ENGAGEMENT CENTER
- LEADERSHIP ENGAGEMENT CENTER
- GLOBAL ENGAGEMENT CENTER
- SCHOOL OF BUSINESS
- COLLEGE OF EDUCATION & HUMAN DEVELOPMENT
- COLLEGE OF HUMANITIES & SOCIAL SCIENCES
- COLLEGE OF PERFORMING & VISUAL ARTS
- COLLEGE OF SCIENCE & ENGINEERING
- SCHOOL OF CONTINUING AND PROFESSIONAL STUDIES
- UNIVERSITY COLLEGE
- HONORS PROGRAM
- LIBRARY
- UGRASP
- STUDENT SERVICES
- FACULTY SCHOLARLY SUPPORT FUND GRANTS

Dr. Nichole Wangsgard published “The Secret to Teaching the Trouble Maker” in *The Utah Special Educator*, March 2013.

Dr. Nichole Wangsgard presented “The Perceptions of Middle School Students with E/BD Regarding Bullying” at the 36th Annual Conference on Teacher Educators for Children with Behavioral Disorders in Tucson, Ariz., October 2012. A paper based on these findings is now under review at *The Journal of Special Education*.

Dr. Nichole Wangsgard presented “Valuable Tips for Helping Student with Emotional And Behavioral Disorders Succeed in the Classroom” at the 31st National Conference on the Training and Employment of Para-educators, Salt Lake City, Utah, April 2013.

Dr. Nichole Wangsgard presented “Valuable Tips for Helping Students with Emotional and Behavioral Disorders Succeed in the Classroom” at the SUU Festival of Excellence, April 2013.

Professor Peggy Wittwer and **Dr. Brian Ludlow** presented “Making STEM Steamy and The Fire Circle” at the SUU Festival of Excellence, April 2013.

Projects

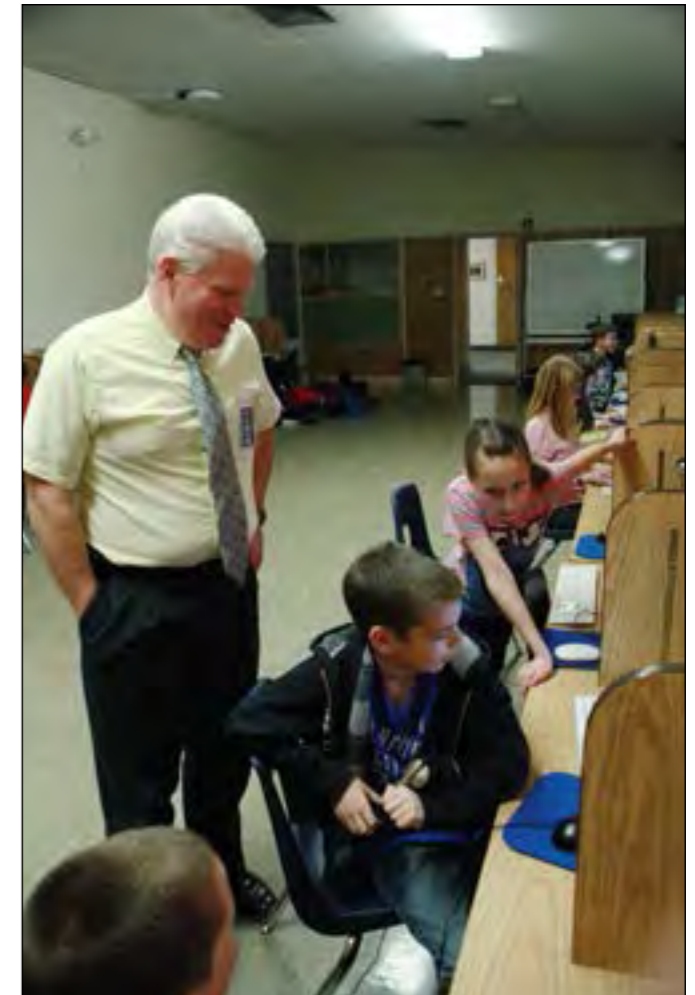
Dr. Bruce O. Barker developed a two-semester credit hour online course, “The Japanese Internment at Topaz, Utah, in World War II” for the Utah State Office of Education. The course serves as a professional development option for Social Studies teachers in Utah.

Physical Education & Human Performance

Publications and Presentations

Dr. Mark DeBeliso, McChesney, J.W., & Murdock, L.E. published “The Hand Grip ForceMap™ System” in the *International Journal of Science and Engineering Investigations*, (2012), 1:8, 76-78.

Dr. Mark DeBeliso, McChesney, J.W. and Murdock, L.E. published “Clinical Orthopedic Device Innovation: The Anchored Ankle Brace™ & Full Leg Support System™” in the *International Journal of Science and Engineering Investigations*, (2012), 1:11, 30-32.



STEAM after school computer program at North Elementary School



SUMMER 2013 • VOLUME 2 • ISSUE 2

- INTRODUCTION
- COMMUNITY ENGAGEMENT CENTER
- CREATIVE ENGAGEMENT CENTER
- OUTDOOR ENGAGEMENT CENTER
- LEADERSHIP ENGAGEMENT CENTER
- GLOBAL ENGAGEMENT CENTER
- SCHOOL OF BUSINESS
- COLLEGE OF EDUCATION & HUMAN DEVELOPMENT
- COLLEGE OF HUMANITIES & SOCIAL SCIENCES
- COLLEGE OF PERFORMING & VISUAL ARTS
- COLLEGE OF SCIENCE & ENGINEERING
- SCHOOL OF CONTINUING AND PROFESSIONAL STUDIES
- UNIVERSITY COLLEGE
- HONORS PROGRAM
- LIBRARY
- UGRASP
- STUDENT SERVICES
- FACULTY SCHOLARLY SUPPORT FUND GRANTS

Dr. Mark DeBeliso, McChesney, J.W., Sevene, T.G. et al. published “Polyurethane Replacement Insoles and Tibial Impact Acceleration Characteristics” in the *International Journal of Science and Engineering Investigations*, (2012), 1:9, 73-77.

Dr. Mark DeBeliso, Sevene, T.G., Berning J.M. et al. published “Physiological and Psychophysical Comparison between a One and Two-Handed Identical Lifting Task” in the *International Journal of Science and Engineering Investigations*, (2012), 1:9, 86-89.

Dr. Mark DeBeliso, Walsh, J., Adams, K.J. et al. presented “World Masters Games North American Body Mass Index Profile” at the fourth International Congress on Physical Activity and Public Health Australian Conference of Science and Medicine in Sport National Sports Injury Prevention Conference in Sydney, Australia. *Journal of Science and Medicine in Sport*, (2012), 15(6), S320.

Dr. Mark DeBeliso and McChesney, J.W. presented “Strength Testing Normative Values Using Tactile Array Technology” at the Western Society for Kinesiology and Wellness 57th Annual Conference in Reno, Nev., (October, 2012).

Dr. Camille Thomas presented “Emotional Intelligence: A Means to Improve Your Coaching” at the SUU Festival of Excellence, April 2013.

Projects

Dr. Ben Davidson took ten athletic training majors to St. George to provide athletic training services for athletes participating in women’s softball and men’s and women’s volleyball at the Huntsman World Senior Games (October 12, 2012). This provided an opportunity for our students to work with a different age group (50 plus years of age) of athletes than they normally see since they normally work with college age athletes. It is a very positive experience for them to see the difference it makes in your life when you keep yourself in good shape. They also are surprised at how competitive these athletes are.

Graduate Studies in Education

Publications and Presentations

Dr. Katy Herbold presented at the Scholarship of Teaching and Engagement (SoTE) Conference with members of the Education Designed to Give Experience (EDGE)



Dr. Camille Thomas instructing students in yoga class



SUMMER 2013 • VOLUME 2 • ISSUE 2

INTRODUCTION

COMMUNITY ENGAGEMENT CENTER

CREATIVE ENGAGEMENT CENTER

OUTDOOR ENGAGEMENT CENTER

LEADERSHIP ENGAGEMENT CENTER

GLOBAL ENGAGEMENT CENTER

SCHOOL OF BUSINESS

COLLEGE OF EDUCATION & HUMAN
DEVELOPMENTCOLLEGE OF HUMANITIES &
SOCIAL SCIENCESCOLLEGE OF PERFORMING &
VISUAL ARTS

COLLEGE OF SCIENCE & ENGINEERING

SCHOOL OF CONTINUING AND
PROFESSIONAL STUDIES

UNIVERSITY COLLEGE

HONORS PROGRAM

LIBRARY

UGRASP

STUDENT SERVICES

FACULTY SCHOLARLY SUPPORT
FUND GRANTS

team on March 29 at Utah Valley University. The team presented on SUU's unique approach to experiential education.

Dr. Deb Hill presented "SmartSchool Technology" at SUU's Festival of Excellence, April 9, 2013; she also presented "The Last Backpack Generation" at the Festival.

Dr. Brian Ludlow (Teacher Education) and **Dr. Tony Pellegrini** presented "It's All About the Instruction, Baby!" at the SUU Leadership Conference, February 28-March 1, 2013.

Dr. David Lund presented "Google Power" at the SUU Festival of Excellence, April 9, 2013.

Dr. Tony Pellegrini presented "Defining Quality in K-20 Instruction and Programs" at the SUU Festival of Excellence, April 9, 2013.

Dr. Bart Reynolds presented "Implementing Fiscal and Educational Rationale for Implementing and Experiential Learning Model" at the SUU Festival of Excellence, April 9, 2013.

Projects

On behalf of the Beverley Taylor Sorenson Center for Innovative Education, **Dr. Prent Klag** collected data at the North Elementary Partnership School to assess the effectiveness of programs implemented and facilitated in the last year, including: the STEAM (science, technology, engineering, art, math) curricular focus and the integrated curriculum units developed at the school; the "Leader in Me" School-wide Transformation and Self-Responsibility program; the Pre-Service Elementary Teacher Education "Block" Program at North Elementary; the SUU Preschool at North; the North Family and Community Involvement Program; the several student engagement and enhancement programs at North Elementary (artsFUSION, Polar Expeditions, various after school clubs, Student Ambassador Program, etc.)

Awards and Leadership

Dr. Deb Hill was appointed dean of the Beverley Taylor Sorenson College of Education and Human Development. She previously served as interim dean.



Elementary Education display at Festival of Excellence

Dean: James McDonald

Website: <http://suu.edu/hss/>



Centrum Arena North Entrance

HSS Highlights

The 2012 cover design of the Kolob Canyon Review (designed by student Mitch Grimshaw) was selected from thousands of projects as a Featured Project by the AIGA (the national design organization): <http://portfolios.aiga.org>

COLLEGE OF HUMANITIES & SOCIAL SCIENCES

Communication

Publications and Presentations

Dr. Matt Barton and **Dr. Kevin Stein** presented "Yeah, There's an App for That: Using Smart Phone Apps in Public Speaking Instruction" at the National Communication Association Conference in Orlando, Flor., November 2012.

Dr. Lindsey A. Harvell, Dr. Norman C. H. Wong (University of Oklahoma) and Kylie J. Harrison (University of Oklahoma) published "Clearing the Smoke: Assessing Nonsmokers' Emotional Reactions to Gain and Loss Framed Antismoking PSAs and their Impact on Behavioral Intentions to Promote Smoking Cessation" in *Health Communication*, 2012.

Dr. Lindsey A. Harvell and Michael W. Pfau (University of Oklahoma) published "The Factors that Contribute to the Persuasiveness of Political Advertising Messages" in *Iowa Journal of Communication*, 2012.

Dr. Lindsey A. Harvell, Gwendelyn S. Nisbett (University of North Texas) and Claude H. Miller (University of Oklahoma) presented "Plane Crashes: The Effects of News Regarding Our Fear of Death" at the National Communication Association, Orlando, FL, 2012.

Dr. Patricia Paystrup presented "Moving to Action: Structuring Problem-solving Messages with Monroe's Motivated Sequence" at the SUU Leadership Conference, February 2013.

Sage Platt (director, Speech and Presentation Center), with a group of students, presented on "Leadership in Group Facilitation" at the SUU Leadership Conference, February 2013.

Dr. Kevin Smith, **Dr. Matt Barton** and Paul Turman published "In the Dark at Texas Tech: News Coverage Involving the Image Repair Discourse of Mike Leach and Adam James" in the edited volume *Repairing the Athlete's Image: Studies in Sports Image Restoration*, 2013 (Eds J. R. Blaney, L. R. Lippert, & J. S. Smith).

Dr. Kevin Stein and **Dr. Matt Barton** presented "Political, Media, and Citizen *Kategoria* following Barack Obama's 'Global Apology Tour'" at the National Communication Association Conference in Orlando, Flor., November 2012.

SUU
SUMMIT

ONLINE

SUMMER 2013 • VOLUME 2 • ISSUE 2

INTRODUCTION

COMMUNITY ENGAGEMENT CENTER

CREATIVE ENGAGEMENT CENTER

OUTDOOR ENGAGEMENT CENTER

LEADERSHIP ENGAGEMENT CENTER

GLOBAL ENGAGEMENT CENTER

SCHOOL OF BUSINESS

COLLEGE OF EDUCATION & HUMAN DEVELOPMENT

COLLEGE OF HUMANITIES & SOCIAL SCIENCES

COLLEGE OF PERFORMING & VISUAL ARTS

COLLEGE OF SCIENCE & ENGINEERING

SCHOOL OF CONTINUING AND PROFESSIONAL STUDIES

UNIVERSITY COLLEGE

HONORS PROGRAM

LIBRARY

UGRASP

STUDENT SERVICES

FACULTY SCHOLARLY SUPPORT FUND GRANTS



SUMMER 2013 • VOLUME 2 • ISSUE 2

INTRODUCTION

COMMUNITY ENGAGEMENT CENTER

CREATIVE ENGAGEMENT CENTER

OUTDOOR ENGAGEMENT CENTER

LEADERSHIP ENGAGEMENT CENTER

GLOBAL ENGAGEMENT CENTER

SCHOOL OF BUSINESS

COLLEGE OF EDUCATION & HUMAN
DEVELOPMENT

COLLEGE OF HUMANITIES &
SOCIAL SCIENCES

COLLEGE OF PERFORMING &
VISUAL ARTS

COLLEGE OF SCIENCE & ENGINEERING

SCHOOL OF CONTINUING AND
PROFESSIONAL STUDIES

UNIVERSITY COLLEGE

HONORS PROGRAM

LIBRARY

UGRASP

STUDENT SERVICES

FACULTY SCHOLARLY SUPPORT
FUND GRANTS

Dr. Jon Smith and **Professor Anne Smith** presented "The Fulbright Experience in Swaziland: A Small Country with Big Smiles" at the SUU Festival of Excellence, April 2013.

English

Publications and Presentations

Dr. James Aton presented "The Art and Life of Jimmie F. Jones" at the SUU Festival of Excellence, April 2013.

Dr. Kyle Bishop presented "To Live, to Die, or to Go Zombie: Teenage Anxiety in *The Forest of Hands and Teeth*" at the Rocky Mountain Modern Language Association, Sixty-Sixth Annual Convention in Boulder, Colorado, October 2012. He also presented a variation of this speech at the SUU Festival of Excellence, April 2013.

Dr. Kyle Bishop presented "'We Are the Walking Dead!': Why Zombies Matter" as the 2012 Tanner Distinguished Faculty Lecturer.

Dr. Bryce Christensen presented "T'ao Ch'ien and the Romantic Paradox: Adoring Nature for an Urban Readership" at the joint annual convention of the Popular Culture Association Conference and the American Culture Association, Boston, Massachusetts, April 2012.

Dr. Bryce Christensen published a book of poetry, *The Portals of Sheol' and Other Poems* with White Violet Press, 2012. One of the poems in this collection ("English 101") has been nominated for a Pushcart Prize.

Dr. Bryce Christensen published the poem "Travel Magazine—Revised" in *First Things* November 2012: 31.

Dr. Bryce Christensen published "Tragedy Without Tears? Confronting the Temporal Contradictions in C.P. Snow's Understanding of Tragedy in a Scientific World" in *Philament*, November 2012: 15-30.

Dr. Bryce Christensen presented "A God or a Biological By-Product? Rethinking the Imaginative Place of Man in the Post-Copernican Cosmos" at the Rocky Mountain Modern Language Association, Boulder, Colo., October 2012.

Dr. Bryce Christensen presented "Tragedy Without Tears? Confronting the Contradictions in C.P. Snow's Gospel of Science" at the SUU Festival of Excellence, April 2013.

Dr. Julia Combs presented "Mother Knows Best: Ethos in Dorothy Leigh's Seventeenth-Century Conduct Manual *The Mother's Blessing*" at the 66th Annual Rocky Mountain Modern Language Association Convention in Boulder, Colo., October 2012.

Professor Charles Cuthbertson presented "'Seeds Blowin' Up the Highway': Archetypes and Relevance in the Lyrics of Bruce Springsteen" at the 66th Annual Rocky Mountain Modern Language Association Convention in Boulder, Colo., October 12, 2012. Professor Cuthbertson also presented on this topic at the SUU Festival of Excellence, April 2013.

Dr. Danielle Dubrasky presented "'Ruin and Light': A Poetry Reading" at the SUU Festival of Excellence, April 9, 2013.

Dr. Nozomi Irei presented a paper, "Mishima's Cinematic Image vs. Literary Image; Haptic Space and the Unrepresentable" at the 66th Annual Rocky Mountain Modern Language Association Convention in Boulder, Colo., October 2012. She also served as chair of the Special Topics section discussing "Blanchot and the Space of Literature".



SUMMER 2013 • VOLUME 2 • ISSUE 2

INTRODUCTION

COMMUNITY ENGAGEMENT CENTER

CREATIVE ENGAGEMENT CENTER

OUTDOOR ENGAGEMENT CENTER

LEADERSHIP ENGAGEMENT CENTER

GLOBAL ENGAGEMENT CENTER

SCHOOL OF BUSINESS

COLLEGE OF EDUCATION & HUMAN
DEVELOPMENT

COLLEGE OF HUMANITIES &
SOCIAL SCIENCES

COLLEGE OF PERFORMING &
VISUAL ARTS

COLLEGE OF SCIENCE & ENGINEERING

SCHOOL OF CONTINUING AND
PROFESSIONAL STUDIES

UNIVERSITY COLLEGE

HONORS PROGRAM

LIBRARY

UGRASP

STUDENT SERVICES

FACULTY SCHOLARLY SUPPORT
FUND GRANTS

Dr. Todd Petersen presented "Audioscape Storytelling" at the SUU Festival of Excellence, April 2013.

Dr. Jessica Tvordi presented "To 'Corrupteth With Ydolles, and Stynkyng Sodometry': Early Tudor Protestant Propaganda and the Theatre of John Bale" at the SUU Festival of Excellence, April 2013.

Awards and Leadership

Dr. Darrell Spencer's story "Can I Help Who's Next?" (originally published in the *Idaho Review*) was listed in Best American Short Stories 2012 in the "Other Distinguished Stories 2011".

Dr. Julia Combs successfully defended her Ph.D. dissertation "'Carefull' Ethos: The Construction of Ethos in Dorothy Leigh's *The Mother's Blessing*" in July 2012 at the University of Nevada Las Vegas.

Foreign Language & Philosophy

Publications and Presentations

Dr. Jim Harrison presented "Translatio Imperii, das Annolied and German Mythic History" at the 66th Annual Rocky Mountain Modern Language Association Convention in Boulder, Colo., October 2012. He presented on this topic at the SUU Festival of Excellence, April 2013.

Dr. Rachel Kirk published "The Father, Hugo Chavez, and the Holy Spirit: Power from Oratory" in *Critical Issues in Justice and Politics*, December 2012.

History , Sociology , Anthropology

Publications and Presentations

Dr. Emily Dean presented "Viracocha and the Volcano: The Archaeology of the Southern Vilcanota River Valley, Peru" at the SUU Festival of Excellence, April 2013.

Dr. Shobha Hamal Gurung and **Dr. Danielle Dubrasky** presented "Interdisciplinary Leadership through Women and Gender Studies" at the SUU Leadership Conference, February 2013.

Dr. Shobha Hamal Gurung presented "Nepali Female Migrants in US Informal Economic Sectors: From Women's Agency to Transnational Community-Building" at the SUU Festival of Excellence, April 2013.

Dr. James McDonald (Dean of HSS), John Hawkins, and Walter Randolph Adams edited the new book, *Crisis of Governance in Maya Guatemala: Indigenous Responses to a Failing State*. The book was released April 2013, by the University of Oklahoma Press.

Dr. James McDonald presented "The Real 2012 in Maya Guatemala: Coping with Multiple Forms of Governance in a Violent Neoliberal World" at the SUU Festival of Excellence, April 2013.

Dr. Mark Miller has a book, *Claiming Cherokee: The Five Tribes and the Politics of Indian Identity*, forthcoming from University of Oklahoma Press.



SUMMER 2013 • VOLUME 2 • ISSUE 2

INTRODUCTION

COMMUNITY ENGAGEMENT CENTER

CREATIVE ENGAGEMENT CENTER

OUTDOOR ENGAGEMENT CENTER

LEADERSHIP ENGAGEMENT CENTER

GLOBAL ENGAGEMENT CENTER

SCHOOL OF BUSINESS

COLLEGE OF EDUCATION & HUMAN
DEVELOPMENT

COLLEGE OF HUMANITIES &
SOCIAL SCIENCES

COLLEGE OF PERFORMING &
VISUAL ARTS

COLLEGE OF SCIENCE & ENGINEERING

SCHOOL OF CONTINUING AND
PROFESSIONAL STUDIES

UNIVERSITY COLLEGE

HONORS PROGRAM

LIBRARY

UGRASP

STUDENT SERVICES

FACULTY SCHOLARLY SUPPORT
FUND GRANTS

Dr. Earl Mulderink presented "New Bedford's Civil War" at the SUU Festival of Excellence, April 2013.

Dr. Michelle Orihel presented "The Republican Society of South Carolina and the Success of Transatlantic Republicanism, ca. 1793-95" at the SUU Festival of Excellence, April 2013.

Dr. Michael Ostrowsky presented "A Psychosocial Model of Violent Behavior among Sports Spectators" at the SUU Festival of Excellence, April 2013.

Dr. Larry Ping published "Gustav Freytag, the Reichsgründung and the National Liberal Origins of the Sonderweg" in *Central European History*, 45.4 (December 2012).

Dr. Larry Ping presented "Lincoln and Bismarck: Nation-building in the Nineteenth Century" at the SUU Festival of Excellence, April 2013.

Dr. Kholoud Al-Qubbaj edited the collection *Dimensions of Global Diversity*, forthcoming from Cognella Academic Publishing.

Awards and Leadership

Dr. Randle Hart received the SUU Distinguished Educator Award, 2011-12.

Political Science & Criminal Justice

Publications and Presentations

Dr. Bradley Cook (provost) spoke at the closing session of the SUU Leadership Conference, "Lead, Share, Build: Together, Today, Tomorrow" on March 1, 2013.

Dr. Bradley Cook (provost) presented "Pre-Mortality and Islam" at SUU's Festival of Excellence, April 2013.

Dr. John Howell presented "Not Just for Trekkies Anymore: Using *Star Trek* to Teach Political Science" at the Weber State University Teaching and Learning Symposium, April 2013.

Dr. G. Michael Stathis presented "Imperial Restoration? Barack Obama and American Foreign Policy," at the 2013 Annual Meeting of The Western Political Science Association in Hollywood California in March. He also acted as the discussant for a panel entitled "Theoretical Approaches to International Relations: Placing International Mediation in International Relations Theory." Dr. Stathis presented this same topic at the SUU Festival of Excellence, April 2013.

Projects

Dr. Michael G. Stathis is a continuing guest on the program SitRep for the British Forces Broadcasting System, speaking on American foreign policy and international relations.



SUMMER 2013 • VOLUME 2 • ISSUE 2

INTRODUCTION

COMMUNITY ENGAGEMENT CENTER

CREATIVE ENGAGEMENT CENTER

OUTDOOR ENGAGEMENT CENTER

LEADERSHIP ENGAGEMENT CENTER

GLOBAL ENGAGEMENT CENTER

SCHOOL OF BUSINESS

COLLEGE OF EDUCATION & HUMAN
DEVELOPMENT

COLLEGE OF HUMANITIES &
SOCIAL SCIENCES

COLLEGE OF PERFORMING &
VISUAL ARTS

COLLEGE OF SCIENCE & ENGINEERING

SCHOOL OF CONTINUING AND
PROFESSIONAL STUDIES

UNIVERSITY COLLEGE

HONORS PROGRAM

LIBRARY

UGRASP

STUDENT SERVICES

FACULTY SCHOLARLY SUPPORT
FUND GRANTS

Psychology

Publications and Presentations

Dr. G. E. Kawika Allen presented “Examining Perceived Attitudes of Counseling between LDS Religious Leaders and Mental Health Therapists” at the SUU Festival of Excellence, April 2013.

Dr. Steve Barney presented “Engagement-Friendly Rank and Tenure Models” at the Utah Campus Compact Faculty Retreat in Moab, Utah on February 2013. He presented a variation of this topic at the SUU Festival of Excellence, April 2013.

Dr. Grant Corser and Steven Hyde presented “Prosocial and Antisocial Behaviors Toward Middle Easterners as Propagated by Mortality Salience” at the SUU Festival of Excellence, April 2013.

Dr. David Schwalb and Barbara J. Schwalb presented “Fathers in Cultural Context” at University of Nevada-Las Vegas to its Department of Anthropology, September 2012.

Dr. David Schwalb and J. Nakazawa published “Fathering in Japan: Entering an Era of Involvement with Children” in a book that Dr. Schwalb edited with Barbara J. Schwalb and Michael E. Lamb, published by Routledge, September 2012.

Dr. David Schwalb presented “American Fathers: A Cultural Perspective” at the SUU Festival of Excellence, April 2013.

Dr. Garrett Strosser presented “Evaluating the Construct of Cultural Distance in Bicultural Mexican Americans” at the Society for Personality and Social Psychology, New Orleans, La., January 2013.

Dr. Garrett Strosser, along with several students, presented “Evaluating Outgroup Membership and Moral Foundations Theory to Increase Awareness of Mexican Cartel Violence in Liberals and Conservatives” at the SUU Festival of Excellence, April 2013.

Dr. Lynn White (department chair) presented “Assess This! The What and How of Assessing Psychology Department Goals and Student Learning Outcomes” at the SUU Festival of Excellence, April 2013.

Awards and Leadership

Dr. David Schwalb was appointed to the editorial board of the journal *Fathering: A Journal of Theory, Research, and Practice about Men as Fathers*.

Dr. G. E. Kawika Allen was selected to be interviewed by a widely viewed news media forum to address concerns of psychological difficulties and suicide, specifically among Pacific Islanders, in November 2012. The interview can be found here: <http://www.youtube.com/user/PolyOneMedia>.

Hispanic Center for Academic Excellence

Presentations

Dr. Gabriel Ferreyra-Orozco presented “Judicial Corruption and Drug Trafficking in Mexico” at the SUU Festival of Excellence, April 2013.

Dean: Shauna Mendini

Website: <http://suu.edu/pva/>



South Hall West Entrance

CPVA Highlights

Professor Peter Sham, co-chair of Theatre Arts & Dance, has been selected by the Kennedy Center American College Theater Festival to receive its Faculty Recognition Medallion. Sham was honored for his outstanding contributions to teaching and producing theatre as well as for his commitment to the American College Theatre Festival.

Professor Carol Ann Modesitt led SUU vocal students to a second place victory in the undergraduate category at the National Opera Association Competition. Four SUU students performed a scene from *The Old Maid and the Thief*.

COLLEGE OF PERFORMING & VISUAL ARTS

Art & Design

Publications and Presentations

Professor Jeremias Paul presented "Mikado: Photographs by Jeremias Paul" at SUU's Festival of Excellence, April 2013.

One of **Professor Deborah K Snider's** art quilts was accepted for inclusion the forthcoming book, *Art Quilt Portfolio: People and Portraits*, in spring 2013.

Professor Deborah K. Snider presented "An Unsuspecting Leader" at the SUU Leadership Conference, February, 2013.

Professor Deborah K. Snider presented "From Pink to Red Hot: Valuing the Scale of 21st Century Art Education" at the SUU Festival of Excellence, April 2013.

Professor Carrie Trenholm presented "Making Glass Mosaics in Ravenna, Italy" at the SUU Festival of Excellence, April 2013.

Projects and Exhibitions

Professor Eric Brown, chair, participated in an art exhibition entitled, "Land of Contrast: An Artist's Diary of the Dixie National Forest" art exhibit, November 16, 2012 to January 18, 2013. The exhibit featured art by SUU faculty members including **Professor Arlene Braithwaite** and **Professor Carrie Trenholm**. The exhibition was sponsored by the Dixie National Forest and Dixie State College Sears Museum Gallery in the Eccles Fine Art Center. The work was inspired by the Dixie National Forest's varied landscape of color, elevation, geology, scenery, and natural resources. The stated intent was to inspire the public to explore and make lasting connections to the Forest.

SUU
SUMMIT

ONLINE

SUMMER 2013 • VOLUME 2 • ISSUE 2

INTRODUCTION

COMMUNITY ENGAGEMENT CENTER

CREATIVE ENGAGEMENT CENTER

OUTDOOR ENGAGEMENT CENTER

LEADERSHIP ENGAGEMENT CENTER

GLOBAL ENGAGEMENT CENTER

SCHOOL OF BUSINESS

COLLEGE OF EDUCATION & HUMAN
DEVELOPMENT

COLLEGE OF HUMANITIES &
SOCIAL SCIENCES

COLLEGE OF PERFORMING &
VISUAL ARTS

COLLEGE OF SCIENCE & ENGINEERING

SCHOOL OF CONTINUING AND
PROFESSIONAL STUDIES

UNIVERSITY COLLEGE

HONORS PROGRAM

LIBRARY

UGRASP

STUDENT SERVICES

FACULTY SCHOLARLY SUPPORT
FUND GRANTS



SUMMER 2013 • VOLUME 2 • ISSUE 2

INTRODUCTION

COMMUNITY ENGAGEMENT CENTER

CREATIVE ENGAGEMENT CENTER

OUTDOOR ENGAGEMENT CENTER

LEADERSHIP ENGAGEMENT CENTER

GLOBAL ENGAGEMENT CENTER

SCHOOL OF BUSINESS

COLLEGE OF EDUCATION & HUMAN
DEVELOPMENTCOLLEGE OF HUMANITIES &
SOCIAL SCIENCESCOLLEGE OF PERFORMING &
VISUAL ARTS

COLLEGE OF SCIENCE & ENGINEERING

SCHOOL OF CONTINUING AND
PROFESSIONAL STUDIES

UNIVERSITY COLLEGE

HONORS PROGRAM

LIBRARY

UGRASP

STUDENT SERVICES

FACULTY SCHOLARLY SUPPORT
FUND GRANTS

Professor Brian Hoover and **Dr. Helen Boswell** (biology) collaborated to publish a novel, "MYTHOLOGY. MYTHOLOGY," written by Boswell, features the original oil painting created by Hoover as the art for the book's cover. The novel was published in September 2012, and the novel's oil painting will be displayed in Brian's gallery in Salt Lake City later this year.

Professor Deborah K. Snider curated the highly successful Everything in Between: Art Quilts, Fabric Collage and Embroidery at the Braithwaite Fine Arts Gallery in fall 2013 and coordinated all its subsequent well-attended workshops.

Professor Deborah K. Snider was a guest performer in the fall 2013 Satellite Salon concert, *Common Threads*, creating a community quilt during the second act. Her art quilts were featured in two exhibitions, *Rivers & Streams*, at the Taiwan Art Quilt Society, and *Art Educator as Artist* at the Hammond Regional Art Center in Louisiana.

Music

Publications , Presentations and Performances

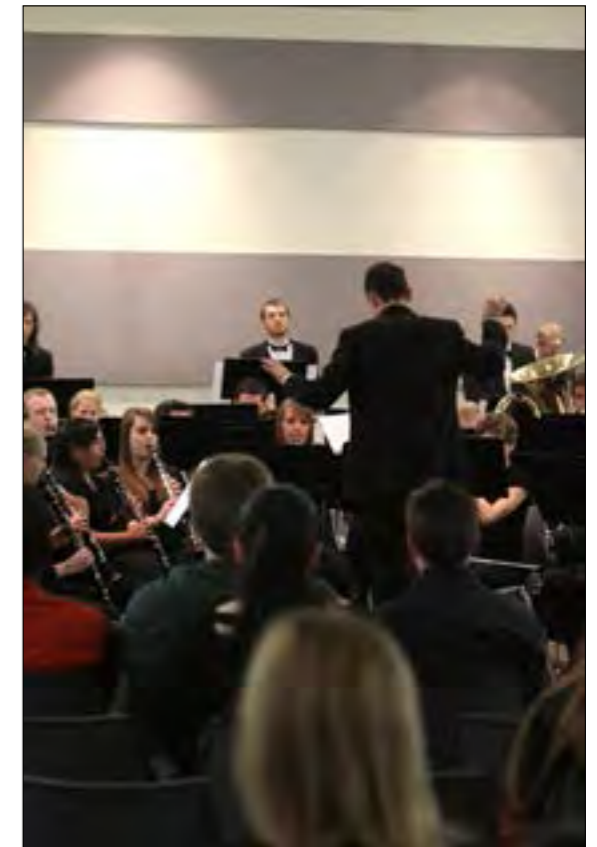
Dr. Adam Lambert led the SUU Wind Symphony in a performance of "Parkour and a Prayer for Higashi Nihon" at SUU's Festival of Excellence, April 2013.

Professor Carol Ann Modesitt and Barbara Hill Moore (Southern Methodist University) presented "Looking Good, Singing Great! How to Dress for Audition Success" and performed on a Cabaret Session on the Music of Harold Arlen in Portland, Ore.

Dr. Virginia Stitt and the music department hosted Thomas Stacy, English horn of the New York Philharmonic (retired) for a four-day residency in October. Students performed in master classes, participated in Q&A sessions, and heard Stacy perform on oboe d'amore and English horn, with assistance from **Dr. Willem van Schalkwyk** (piano) and **Dr. Lynn Vartan** (percussion).

Dr. Lynn Vartan (percussion) recently finished recording her first solo CD, *Dancing on the Head of a Pin*, which is now available. Marimba One, a custom marimba manufacturer, contracted Vartan to design her own series of mallets which includes color, weight and shape to be sold as "Lynn Vartan" Mallets. Vartan also recently appeared as guest soloist with the St. Helena Symphony (Montana) and performed to a packed house of 1800.

The Department of Music's String Ensemble (under the direction of **Dr. Xun Sun**), Piano Ensemble (**Dr. Christian Bohnenstengel**) and Woodwind Ensemble (**Dr. Virginia Stitt**) collaborated with dancers (choreographed by **Dean Shauna Mendini**) and Associate Dean **Dr. Eric Freden** (harpichord) on a performance of excerpts from Jean-Baptiste Lully's tragédie en musique *Phaëton* at the SUU Festival of Excellence, April 2013.



Orchestra performance during
2013 Festival of Excellence



SUMMER 2013 • VOLUME 2 • ISSUE 2

INTRODUCTION

COMMUNITY ENGAGEMENT CENTER

CREATIVE ENGAGEMENT CENTER

OUTDOOR ENGAGEMENT CENTER

LEADERSHIP ENGAGEMENT CENTER

GLOBAL ENGAGEMENT CENTER

SCHOOL OF BUSINESS

COLLEGE OF EDUCATION & HUMAN
DEVELOPMENT

COLLEGE OF HUMANITIES &
SOCIAL SCIENCES

COLLEGE OF PERFORMING &
VISUAL ARTS

COLLEGE OF SCIENCE & ENGINEERING

SCHOOL OF CONTINUING AND
PROFESSIONAL STUDIES

UNIVERSITY COLLEGE

HONORS PROGRAM

LIBRARY

UGRASP

STUDENT SERVICES

FACULTY SCHOLARLY SUPPORT
FUND GRANTS

Theatre Arts and Dance

Publications and Presentations

Professor Richard Bugg and students Natalie Spengler and Zachary Trotter presented "Hippolytus - A Study in Creative Theatre" at the SUU Festival of Excellence, April 2013.

Dr. William Byrnes presented "The Utah Shakespeare Festival: An Evolving Arts Leadership Partnership" at the SUU Festival of Excellence, April 2013.

Dean Shauna Mendini, and **Chair Keith Bradshaw** and **Chair Kay Anderson** presented "The Dream of Helen" at the SUU Festival of Excellence, April 2013.

Professor Denise Purvis presented a movement workshop regarding dance pedagogy in the high school environment at an international conference on somatics-based dance technique. She shared practical approaches to engaging interpersonal and intrapersonal learners in class for high school teachers.

Professor Peter Sham and **Brad Carroll** performed during the opening session of SUU Festival of Excellence, April 2013.

Professor Brian Swanson participated in a panel of educators and professionals in discussing and offering strategies to prevent burnout within the industry at the United States Institute for Theatre Technology Annual Conference in Milwaukee, Wis., March 2013.

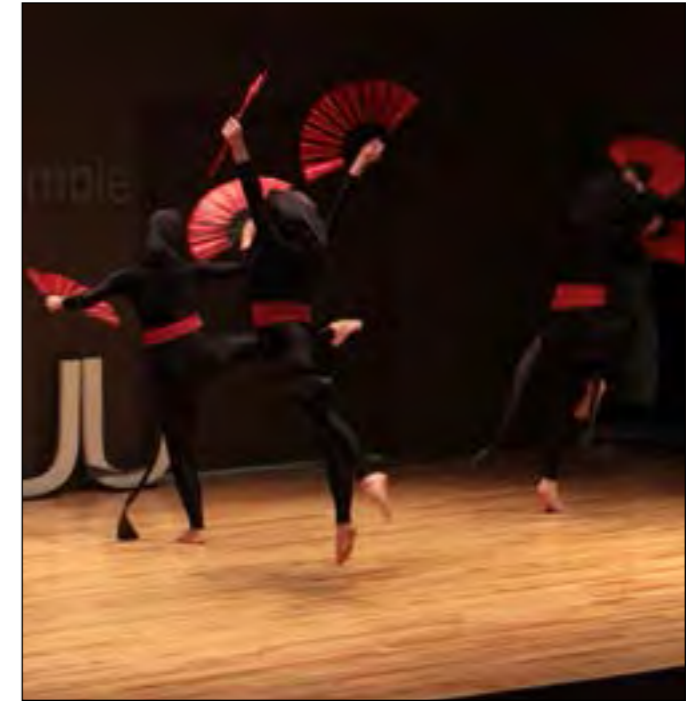
Projects

Professor Jarrod Bray traveled to Boston, Mass., to design the scenery and provide consultation on the production *The Long Christmas Dinner*, an opera by Paul Hindemith. The production was produced by Opera-Hub, a non-profit opera company whose mission is to develop new audiences throughout New England by producing avante-garde works that are free to the public.

Arts Administration Graduate Programs

Publications and Presentations

Dr. James Marchant and Todd Dellinger (assistant professor at Rider University), presented on "Challenging and Provocative Work in the Higher Education Classroom" at the Association of Arts Administration Educators Conference in New Orleans, LA, in March 2013.



SUU Dance Ensemble performs at 2013 TEDxSUU



SUMMER 2013 • VOLUME 2 • ISSUE 2

INTRODUCTION
COMMUNITY ENGAGEMENT CENTER
CREATIVE ENGAGEMENT CENTER
OUTDOOR ENGAGEMENT CENTER
LEADERSHIP ENGAGEMENT CENTER
GLOBAL ENGAGEMENT CENTER
SCHOOL OF BUSINESS
COLLEGE OF EDUCATION & HUMAN
DEVELOPMENT
COLLEGE OF HUMANITIES &
SOCIAL SCIENCES
COLLEGE OF PERFORMING &
VISUAL ARTS
COLLEGE OF SCIENCE & ENGINEERING
SCHOOL OF CONTINUING AND
PROFESSIONAL STUDIES
UNIVERSITY COLLEGE
HONORS PROGRAM
LIBRARY
UGRASP
STUDENT SERVICES
FACULTY SCHOLARLY SUPPORT
FUND GRANTS

Dr. James Marchant took first year master of fine arts students to Washington, D.C. in April 2013 to attend the Emerging Arts Leaders Symposium where they attended sessions by leaders in the field and network with other emerging leaders. The students also attended National Arts Advocacy Day, which is sponsored by Americans for the Arts.

Awards and Leadership

Dr. James Marchant was elected to replace Ray Inkel as President of the Cedar City Arts Council in Fall 2012.

Braithwaite Fine Arts Gallery

Projects

Reece Summers, director of Braithwaite Fine Arts Gallery, worked in conjunction with The Friends of the Braithwaite Fine Arts Gallery and their fundraising efforts that recently amounted to a three-year total to \$75,000 – donated to the forthcoming Southern Utah Museum of Art.

Center for Shakespeare Studies

Presentations

Professor Don Weingust presented a paper in the seminar “Contemporary Actors as Evidence” at the annual meeting of the Shakespeare Association of America, in March 2013 in Toronto, Ontario, Canada. The paper, “Personness, Passionating and Original Practices” continues a long-running dialogue in print and conference sessions with the seminar’s leader, University of Pennsylvania professor Cary Mazer, on Shakespearean performance practice, history and theory. The conversation will find its next expression in print as part of Weingust’s current book project on “Original Practices in Shakespearean Performance,” forthcoming from publishing company, Palgrave Macmillan.



Students views Braithwaite Fine Arts Gallery exhibit during 2013 Festival of Excellence

Dean: Robert Eves

Website: <http://suu.edu/cose/>



SUU Science Building

College Highlights

The Department of Computer Science and Information Systems (CSIS) recently received notice that their information security curriculum has been recognized and certified as meeting the national training standards for *Information Systems Security (INFOSEC) Professionals, NSTISSI No. 4011*. SUU's CSIS program will formally be recognized during the 17th Colloquium for Information Systems Security Education (CISSE) in June 2013 in Mobile, Ala. According to feedback received from NIETP "SUU appears to have a firm grasp of necessary requirements [needed to meet the standard] and did a good job in presenting curriculum."

This means students and potential employers can be assured that they're getting a quality education in Information Assurance (Security) from SUU.

WALTER MAXWELL GIBSON COLLEGE OF SCIENCE AND ENGINEERING

Agriculture and Nutrition

Publications and Presentations

Dr. Randall Violett advises the Range club at SUU. In February 2013, taking six students to represent the University to the International Society for Range Management in Oklahoma City, Okla. It is a competition called the Range Cup and SUU placed 12th out of 20 universities.

Professor Nica Clark, Professor Artis Grady, Professor Matt Schmidt, and Dr. Cynthia Wright mentored a variety of undergraduate research projects in Spring 2013, which culminated in poster presentations at UCUR, the Utah Academy of Dietetics and Nutrition Annual Meeting, and SUU's Festival of Excellence.

Professor Dean Winward presented "Rubber Rabbitbrush Control with Various Herbicides and Two Different Application Techniques" at the SUU Festival of Excellence, April 2013.

Biology

Publications and Presentations

Professor Bonnie Bain and Heather Shumway presented "Feeding Strategies and Prey Preferences in Predacious Leeches" at the SUU Festival of Excellence, April 2013.

Dr. Helen Boswell presented on the links between science and fantasy in a TEDxSUU presentation on March 27, 2013.

Dr. Frederic Govedich and student Heather Shumway presented "Turkish Pycs" at the SUU Festival of Excellence, April 2013.

Dr. William Heyborne published "Using Big-box Biology to Teach Diversity." *American Biology Teacher* 75.2 (2012): 133-134.



SUMMER 2013 • VOLUME 2 • ISSUE 2

INTRODUCTION

COMMUNITY ENGAGEMENT CENTER

CREATIVE ENGAGEMENT CENTER

OUTDOOR ENGAGEMENT CENTER

LEADERSHIP ENGAGEMENT CENTER

GLOBAL ENGAGEMENT CENTER

SCHOOL OF BUSINESS

COLLEGE OF EDUCATION & HUMAN
DEVELOPMENT

COLLEGE OF HUMANITIES &
SOCIAL SCIENCES

COLLEGE OF PERFORMING &
VISUAL ARTS

COLLEGE OF SCIENCE & ENGINEERING

SCHOOL OF CONTINUING AND
PROFESSIONAL STUDIES

UNIVERSITY COLLEGE

HONORS PROGRAM

LIBRARY

UGRASP

STUDENT SERVICES

FACULTY SCHOLARLY SUPPORT
FUND GRANTS



SUMMER 2013 • VOLUME 2 • ISSUE 2

INTRODUCTION

COMMUNITY ENGAGEMENT CENTER

CREATIVE ENGAGEMENT CENTER

OUTDOOR ENGAGEMENT CENTER

LEADERSHIP ENGAGEMENT CENTER

GLOBAL ENGAGEMENT CENTER

SCHOOL OF BUSINESS

COLLEGE OF EDUCATION & HUMAN
DEVELOPMENTCOLLEGE OF HUMANITIES &
SOCIAL SCIENCESCOLLEGE OF PERFORMING &
VISUAL ARTS

COLLEGE OF SCIENCE & ENGINEERING

SCHOOL OF CONTINUING AND
PROFESSIONAL STUDIES

UNIVERSITY COLLEGE

HONORS PROGRAM

LIBRARY

UGRASP

STUDENT SERVICES

FACULTY SCHOLARLY SUPPORT
FUND GRANTS

The Walter Maxwell Gibson College of Science and Engineering is utilizing proceeds from two endowments and a National Science Foundation (NSF) grant to assist students in the successful completion of undergraduate studies at SUU and better prepare students for post-graduate programs and employment.

- The Walter Maxwell Gibson Endowment funded fellowships to support students conducting research. Support during 2012-13 was given to eight undergraduate students. Direct research support to students amounted to more than \$20,000. Additionally, materials and travel associated with research funding exceeded \$9,000. Research was conducted in chemistry, biology and geology disciplines.
- The L. S. and Alene Skaggs Research Endowment supported 12 students, awarding more than \$10,000 for research. Primarily used for materials and travel related to research, students were supported in projects in the areas of nutrition, biology and chemistry
- 15 students at SUU majoring in science, technology, engineering and mathematics (STEM) disciplines have received \$100,000 in scholarship funds for fiscal year 2012-13 through the S-STEM Grant from the NSF. In addition, the students are mentored and immersed in research training, scholarly seminars and career-related workshops

Projects

Dr. Helen Boswell and **Professor Brian Hoover** (art and design Department) collaborated to publish a novel, *MYTHOLOGY. MYTHOLOGY*, written by Boswell, features an original oil painting by Hoover as the book's cover. The novel was published in September 2012 and the *MYTHOLOGY* oil painting will be displayed in Hoover's gallery in Salt Lake City later this year.

Computer Science & Information Systems

Publications and Presentations

Dr. Nathan Barker, with Laurie Harris, and Connie Nyman, presented "A Comparison of Student Performance: Traditional versus On-line in a Skills Based Computer Applications Course" at the SUU Festival of Excellence, April 2013.

Dr. Shalini Kesar presented a workshop "Transferring Creativity into the Classroom" in collaboration with multi-disciplinary peers at AABBS in Las Vegas, Nev., 2012.

Dr. Shalini Kesar presented at a workshop, "Bringing Creativity into the Classroom via Technology" at the 16th Annual Meeting of the American Association of Behavioral and Social Sciences, Las Vegas, NV, 14-15 February 2013.

Dr. Shalini Kesar presented "The STEAM Project" at the 16th Annual Meeting of the American Association of Behavioral and Social Sciences (AABSS). The meeting was held at Harrah's Las Vegas, Nev., February 2013.

Dr. Shalini Kesar presented "The STEAM Effort" at the SUU Festival of Excellence, April 2013.

Dr. Dezhi Wu and Dr. Katia Passerini will publish "Uncovering Knowledge-based Time-Management Practices: Implications for Project Management" in *International Journal of Managing Projects in Business*, forthcoming 2013.

Benjamin Ngugi, **Dr. Dezhi Wu**, and Jonathan Frank published "Biometric Keypad Reliability: Typing Pattern Stability and Authentication Accuracy" in *Journal of Information Systems Security*, 2012.

Dr. Dezhi Wu and Dr. Katia Passerini published "Temporal Knowledge: Understanding Time Management through Knowledge Management Lens" in *Journal of Information Science and Technology* 8.2 (2012): 17-34.

Dr. Dezhi Wu published "Time Management Quality and Temporal Structure Usage in Calendar Systems" in Proceedings of the International Conference on Information Systems (ICIS 2012) SIG Cognitive Research Workshop, Orlando, Flor., December 2012.



SUMMER 2013 • VOLUME 2 • ISSUE 2

INTRODUCTION

COMMUNITY ENGAGEMENT CENTER

CREATIVE ENGAGEMENT CENTER

OUTDOOR ENGAGEMENT CENTER

LEADERSHIP ENGAGEMENT CENTER

GLOBAL ENGAGEMENT CENTER

SCHOOL OF BUSINESS

COLLEGE OF EDUCATION & HUMAN
DEVELOPMENTCOLLEGE OF HUMANITIES &
SOCIAL SCIENCESCOLLEGE OF PERFORMING &
VISUAL ARTS

COLLEGE OF SCIENCE & ENGINEERING

SCHOOL OF CONTINUING AND
PROFESSIONAL STUDIES

UNIVERSITY COLLEGE

HONORS PROGRAM

LIBRARY

UGRASP

STUDENT SERVICES

FACULTY SCHOLARLY SUPPORT
FUND GRANTS

Dr. Dezhi Wu and Iris Reychav published "Fostering Professional Learning Communities through Knowledge Sharing: The Role of User-Centeredness and School Website Usability" in the International Conference on Information Systems SIG Cognitive Research Workshop Orlando, Flor., December 2012.

Dr. Dezhi Wu and Iris Reychav published "Understanding Learners' Social and Psychological Needs in a Mobile Learning Environment" in Proceedings of the International Conference on Information Systems SIGED in Orlando, Flor., December 2012.

Dr. Dezhi Wu, Iris Reychav, Nir Shvalb, and Ben-Moshe Boaz published "Virtual Labs: Experiencing Internet-based 3D Spatial Training" in the International Conference on Information Systems SIGED in Orlando, Flor., December 2012.

Dr. Dezhi Wu and Iris Reychav published "M-Learning on iPad: An Exploration of User Learning Experiences on Road Safety" in Proceedings of the International Conference on Information Systems HCI in Orlando, Flor., December 2012.

Dr. Dezhi Wu, Karen Patten, and Katia Passerini published "IT Professionals' Time Management Strategies for Value-Added Knowledge Creation in Projects" in Proceedings of Northeast Decision Sciences Institute 2013 Annual Conference, Brooklyn, NY, April 2013.

Dr. Dezhi Wu presented "Virtual Labs: Experiencing Internet-Based 3D Spatial Training" at the SUU Festival of Excellence, April 2013.

Projects

Dr. Shalini Kesar with two of her students conducted an after school STEAM project with the North Elementary Computer Club, Fall 2012 and Spring 2013. This project was showcased as a "best practices project" in December 2012 in the *Utah Women and Education Initiative (UWED)* website: <http://www.utahwomenandeducation.org/resources/best-practice/southern-utah-university-and-north-star-elementary-stem-initiative/>. This is the outcome of a need to increase the number of Utah women holding degrees.

Awards and Leadership

Dr. Shalini Kesar is a member of organizing committee for "Award for Aspirations in Computing," hosted for the first time in Utah, by the National Center for Women & Information Technology. It awarded more than 1,800 young women at the high school level across the nation and for the first time in Utah. Karen Miller, recent SUCCESS Academy graduate received the national award for her computing and IT aptitude, leadership ability, academic history, and her plans for post-secondary education.

Dr. Shalini Kesar, assistant director of the Center of Excellence for Teaching and Learning, facilitated a faculty workshop for "Exploring Scholarly Activities." The workshop engaged in guiding, discussing activities designed to address key questions within the context of each participant's research. Topics included; increasing publications, augmenting classroom practices with research activities, and exploring funding options to support scholarly work.

Dr. Shalini Kesar was responsible for the "Women in Leadership" strand for the conference "Lead, Share, Build: Together, Today, Tomorrow" hosted by the SUU Leadership Engagement Center, February 2013.

Grants

Professor Cecily Heiner and Nora Valletta were awarded a research grant from the Utah Komen Affiliate to investigate low mammogram rates in Utah. The title of their project is "Computing for the Cure: Understanding and Improving the Mammogram Rate in Utah."



SUMMER 2013 • VOLUME 2 • ISSUE 2

INTRODUCTION

COMMUNITY ENGAGEMENT CENTER

CREATIVE ENGAGEMENT CENTER

OUTDOOR ENGAGEMENT CENTER

LEADERSHIP ENGAGEMENT CENTER

GLOBAL ENGAGEMENT CENTER

SCHOOL OF BUSINESS

COLLEGE OF EDUCATION & HUMAN
DEVELOPMENTCOLLEGE OF HUMANITIES &
SOCIAL SCIENCESCOLLEGE OF PERFORMING &
VISUAL ARTS

COLLEGE OF SCIENCE & ENGINEERING

SCHOOL OF CONTINUING AND
PROFESSIONAL STUDIES

UNIVERSITY COLLEGE

HONORS PROGRAM

LIBRARY

UGRASP

STUDENT SERVICES

FACULTY SCHOLARLY SUPPORT
FUND GRANTS

Dr. Shalini Kesar was awarded an NSF CE21 Grant, "Introductory Computer Science Course for Utah High Schools." Kesar is one of the Key Senior Personnel—SUU partners, where other primary investigators include faculty from Utah Valley University and Westminster College. This three year grant/project will introduce a new computer science course to Utah high schools. It will train and support 100 Utah teachers to teach sciences courses. Allowing schools to use already hired technology teachers to instruct computer courses after being certified through five workshops, one of which will be held at SUU.

Engineering Technology & Construction Management

Publications and Presentations

Professor Richard Cozzens presented on "TICE Team Leadership" at the SUU Leadership Conference, February 2013. Speaking about challenges the Technology Intensive Concurrent Enrollment (TICE) Team faced while creating a successful introductory engineering course.

Integrated Engineering

Publications and Presentations

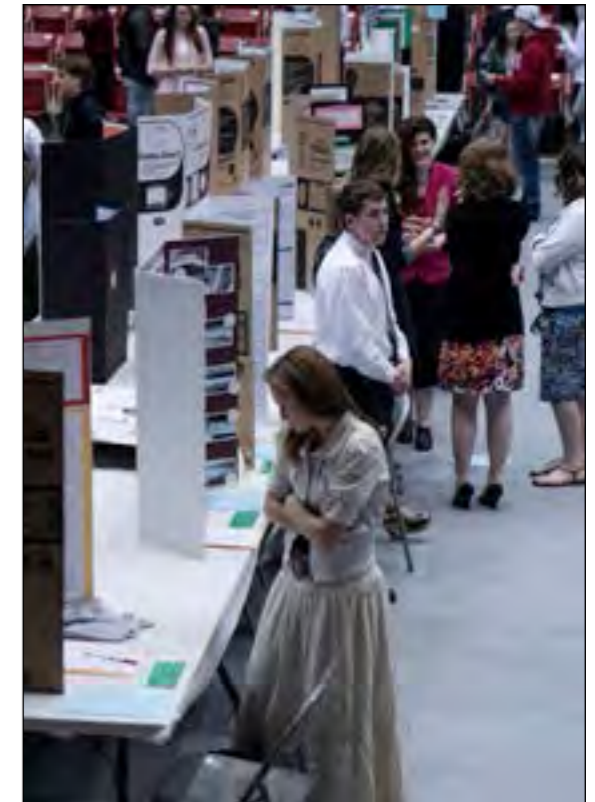
Dr. Glen Longhurst co-authored "In Situ Measurement of Tritium Permeation through Stainless Steel," published in *Journal of Nuclear Materials* 437 (2013) 373-379. Other authors are Walter G. Luscher and David J. Senor of Pacific Northwest National Laboratory and Kevin K. Clayton of the Idaho National Laboratory.

Dr. Thad Morton presented "Quantitatively Assessing Academic Rigor in Experiential Education: A Pilot Study in the Green River Area" at SUU Festival of Excellence, April 2013.

Dr. Thad Morton paper, "Estimating the mean flow field in combustion chambers," has been accepted for publication in *International Journal of Engine Research*, 2013.

Dr. John Murray presented "DesignBuildBLUFF: Coyote Architecture on the Colora" at the SUU Festival of Excellence, April 2013.

Dr. Des Penny, represented by student and co-author Arlo Fawson, presented a paper, "Approximate Analysis of Frames Subjected to Vertical Loads," at the Annual Conference of the Utah Academy of Sciences, Arts, and Letters, April 2013 at Utah Valley University and submitted for publication in the journal of the conference.



Students browse displays at science and engineering fair



SUMMER 2013 • VOLUME 2 • ISSUE 2

INTRODUCTION

COMMUNITY ENGAGEMENT CENTER

CREATIVE ENGAGEMENT CENTER

OUTDOOR ENGAGEMENT CENTER

LEADERSHIP ENGAGEMENT CENTER

GLOBAL ENGAGEMENT CENTER

SCHOOL OF BUSINESS

COLLEGE OF EDUCATION & HUMAN
DEVELOPMENTCOLLEGE OF HUMANITIES &
SOCIAL SCIENCESCOLLEGE OF PERFORMING &
VISUAL ARTS

COLLEGE OF SCIENCE & ENGINEERING

SCHOOL OF CONTINUING AND
PROFESSIONAL STUDIES

UNIVERSITY COLLEGE

HONORS PROGRAM

LIBRARY

UGRASP

STUDENT SERVICES

FACULTY SCHOLARLY SUPPORT
FUND GRANTS

The Department of Integrated Engineering faculty sponsored the Annual Engineering Week in February 2013. The three day event included engineering competitions for students, a guest speaker (Jon P. Christensen of Intermountain Power), and concluded with an awards banquet.

Mathematics

Publications and Presentations

Dr. Seth Armstrong presented "Numerical Analysis for a Lotka-Volterra System Involving Diffusion Terms" at the SUU Festival of Excellence, April 2013.

Dr. Seth Armstrong and Dr. Jianlong Han published "A Method for Numerical Analysis of a Lotka-Volterra Food Web Model" in the *International Journal of Numerical Analysis and Modeling B*. 3(3)(2012).

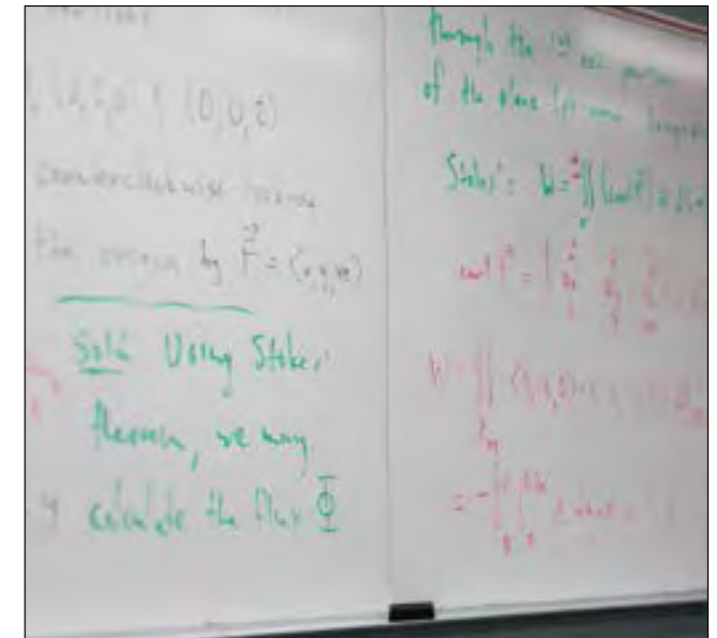
Dr. Said Bahi presented "Determinants of Service Quality in Higher Education" at the SUU Festival of Excellence, April 2013.

Dr. Eric Freden presented "History of the Harpischord" at the SUU Festival of Excellence, April 2013.

Dr. Derek Hein and Dinesh G. Sarvate (College of Charleston, SC) presented "Decompositions of Lambda K_n Using Stanton-type Graphs" at the 26th Midwest Conference on Combinatorics, Cryptography and Computing at Southern Utah University in Cedar City, Utah, held in October 2012. Dr. Hein also served as the chair of the organizing committee for this conference. The presentation was a result of collaborative mathematics research.

Dr. Derek Hein presented "Decompositions of Lambda K_n using Stanton-Type Graphs" at the SUU Festival of Excellence, April 9, 2013.

Dr. Andreas Weingartner published "On the diophantine equation $\prod x_i = \sum x_i$ " in *Integers* 12 (2012): A 57. The paper is available for download at <http://www.westga.edu/~integers/vol12.html>.





SUMMER 2013 • VOLUME 2 • ISSUE 2

INTRODUCTION

COMMUNITY ENGAGEMENT CENTER

CREATIVE ENGAGEMENT CENTER

OUTDOOR ENGAGEMENT CENTER

LEADERSHIP ENGAGEMENT CENTER

GLOBAL ENGAGEMENT CENTER

SCHOOL OF BUSINESS

COLLEGE OF EDUCATION & HUMAN
DEVELOPMENT

COLLEGE OF HUMANITIES &
SOCIAL SCIENCES

COLLEGE OF PERFORMING &
VISUAL ARTS

COLLEGE OF SCIENCE & ENGINEERING

SCHOOL OF CONTINUING AND
PROFESSIONAL STUDIES

UNIVERSITY COLLEGE

HONORS PROGRAM

LIBRARY

UGRASP

STUDENT SERVICES

FACULTY SCHOLARLY SUPPORT
FUND GRANTS

Nursing

Publications and Presentations

Dr. Donna Lister presented "Learning Nursing: Perspectives of Practicing Nurses" at the SUU Festival of Excellence, April 2013.

Professor Claudia Kreipl presented "Effect of Therapeutic Touch on PTSD clients" at the SUU Festival of Excellence, April 2013.

Professor Rebecca Rasmussen and **Professor Shelley Sanderson** presented "Using Popular Culture as a Creative Teaching Strategy" at the Nurse Educators: On a Journey of Excellence conference in Philadelphia, Penn. in October 2012.

Dr. Cynthia Wright presented "Using Online Video Demonstrations in a Culinary Arts Class" at the SUU Festival of Excellence, April 2013.

Awards

Dr. Donna J. A. Lister completed her Ph.D. November 2012, after successful defense of her dissertation "Perspectives of Practicing Registered Nurses on the Importance of Learning Experiences in Nursing School" at Walden University.

Physical Science

Publications and Presentations

Dr. Bruce Howard presented "Novel Therapeutics" at the SUU Festival of Excellence, April 2013.

Dr. C. Frederick Lohrengel and **Dr. Paul R. Larson** published "Determining Atmospheric Pressure Using a Water Barometer" in *The Physics Teacher* 50 (2012): 563-565.

Dr. C. Frederick Lohrengel and **Dr. Paul R. Larson** presented "A New, More Accurate Climate Map for Utah" at the SUU Festival of Excellence, April 2013.

Dr. Jonny S. MacLean presented "Quantitatively Assessing Academic Rigor in Experiential Education: A Pilot Study in the Green River Area" at the SUU Festival of Excellence, April 2013.

Dr. Nathan Werner and student Stephan Maman presented "Chemical Modification to Identify and Maximize the Anticancer Activity of Theaflavins from Black Tea" at the SUU Festival of Excellence, April 2013.



Dr. Donna Lister with students in the Nursing department facilities



SUMMER 2013 • VOLUME 2 • ISSUE 2

INTRODUCTION

COMMUNITY ENGAGEMENT CENTER

CREATIVE ENGAGEMENT CENTER

OUTDOOR ENGAGEMENT CENTER

LEADERSHIP ENGAGEMENT CENTER

GLOBAL ENGAGEMENT CENTER

SCHOOL OF BUSINESS

COLLEGE OF EDUCATION & HUMAN
DEVELOPMENTCOLLEGE OF HUMANITIES &
SOCIAL SCIENCESCOLLEGE OF PERFORMING &
VISUAL ARTS

COLLEGE OF SCIENCE & ENGINEERING

SCHOOL OF CONTINUING AND
PROFESSIONAL STUDIES

UNIVERSITY COLLEGE

HONORS PROGRAM

LIBRARY

UGRASP

STUDENT SERVICES

FACULTY SCHOLARLY SUPPORT
FUND GRANTS

Projects

Dr. Johnny S. MacLean led the Geology 4000 students (Selected Field Trips) on a Spring Break field trip to Labyrinth Canyon. 10 geology students and two outdoor recreation students accompanied MacLean. The five-day trip was designed to give students real-world experience in classroom topics. Further details can be found via SUU News: <http://www.suunews.com/news/2013/mar/20/geology-class-paddles-down-green-river/>

Dr. Nathan Werner attended the SUU Teaching Academy and the Red Rocks Great Teaching Retreat and completed a certification for online instruction. In addition, he initiated three new cutting-edge research projects with four SUU students. Together they're studying (1) synthesis of antibiotics for the treatment of Gram-negative pathogens, (2) semisynthetic modification of anticancer polyphenols, and (3) the preparation of phosphine ligands for use in transition-metal catalyzed reactions.

Dr. MacKay Steffensen and **Dr. Daniel Eves**, along with faculty from Snow College and University of Utah, are developing curriculum for the Technology Intensive Concurrent Enrollment (TICE) Chemistry 1110, Elementary Chemistry.



Dr. Johnny MacLean with SUU geology majors and outdoor recreation & parks tourism majors on the Selected Field Trips course on the banks of the Green River in Labyrinth Canyon during 2013 spring break

Dean: Mark Atkinson

Website: <http://www.suu.edu/scps/>



R. Haze Hunter Conference Center

College Highlights

Dean Mark Atkinson and **Dr. Michiko Kobayashi** have created an initiative for an online teaching certificate for SUU faculty. The certificate involves an eight-hour online course, designed by Kobayashi, teaches the pedagogical theory and practice behind effective online teaching. Faculty receive a certificate upon completion, signed by the Provost. The course is self-paced and available in Canvas. Those interested should contact Kyle Bishop to register.

SCHOOL OF CONTINUING & PROFESSIONAL STUDIES

Publications and Presentations

Dean Mark Atkinson presented best practices to the EDGE center directors about engaging online learners with synchronous technologies. One of which was Nearpod software, an iPad application allowing instructors to share a presentation with other Apple devices.

Dean Mark Atkinson presented "Preservice School Teachers as Learners in a 3-D Virtual Space: Second Life" at the SUU Festival of Excellence, April 2013.

Dr. Karl Stevens published "Contributing Factors to a Successful Course Development Process" in *The Journal of Continuing Higher Education* 62.1 (2013): 2-11. These results were subsequently also presented at SUU's Festival of Excellence, April 2013.

Projects

Professor Lori Perry developed a writing guide for ESL students, which has received positive feedback from student users.

The ESL faculty had their first professional development meeting, where they collaborated on a new curriculum map, trained on updated SUU standards for syllabi development, and received technology training (including things like Nearpod, mentioned above).

Dr. Andrea Stiefvater is working with the EDGE center directors to develop ways to involve SUU ESL learners with experiential learning, for the purpose of helping them learn not just in a classroom with a focus on SUU engagement centers.

Dean Mark Atkinson hosted a company called *The View*, an academic 3-D virtual environment for teaching and learning. The learners connect with an instructor in a video game like environment to help engage them with content. Examples include virtual trips to the Great Wall of China and role playing a mock supreme court. There are also theater productions accessed by use of an avatar.

SUU
SUMMIT

ONLINE

SUMMER 2013 • VOLUME 2 • ISSUE 2

INTRODUCTION

COMMUNITY ENGAGEMENT CENTER

CREATIVE ENGAGEMENT CENTER

OUTDOOR ENGAGEMENT CENTER

LEADERSHIP ENGAGEMENT CENTER

GLOBAL ENGAGEMENT CENTER

SCHOOL OF BUSINESS

COLLEGE OF EDUCATION & HUMAN
DEVELOPMENT

COLLEGE OF HUMANITIES &
SOCIAL SCIENCES

COLLEGE OF PERFORMING &
VISUAL ARTS

COLLEGE OF SCIENCE & ENGINEERING

SCHOOL OF CONTINUING AND
PROFESSIONAL STUDIES

UNIVERSITY COLLEGE

HONORS PROGRAM

LIBRARY

UGRASP

STUDENT SERVICES

FACULTY SCHOLARLY SUPPORT
FUND GRANTS



SUMMER 2013 • VOLUME 2 • ISSUE 2

INTRODUCTION

COMMUNITY ENGAGEMENT CENTER

CREATIVE ENGAGEMENT CENTER

OUTDOOR ENGAGEMENT CENTER

LEADERSHIP ENGAGEMENT CENTER

GLOBAL ENGAGEMENT CENTER

SCHOOL OF BUSINESS

COLLEGE OF EDUCATION & HUMAN
DEVELOPMENT

COLLEGE OF HUMANITIES &
SOCIAL SCIENCES

COLLEGE OF PERFORMING &
VISUAL ARTS

COLLEGE OF SCIENCE & ENGINEERING

SCHOOL OF CONTINUING AND
PROFESSIONAL STUDIES

UNIVERSITY COLLEGE

HONORS PROGRAM

LIBRARY

UGRASP

STUDENT SERVICES

FACULTY SCHOLARLY SUPPORT
FUND GRANTS

Dean: Patrick Clarke

Website: <http://www.suu.edu/uc/>



Sharwan Smith Student Center

UNIVERSITY COLLEGE

Presentations and Publications

Associate Dean Jeb Branin gave the keynote address at the 2013 Utah Advising and Orientation Association Conference at Snowbird Resort.

Michael Carmine and **Professor Phil Roche** presented "Power Searching with Google" at the SUU Festival of Excellence, April 2013.

Dr. David Lunt presented "Athletics, Victory, and the Right to Rule in Ancient Greece" at the SUU Festival of Excellence, April 2013.

Seth Ohms presented "SUU's IIC EDGE" at the SUU Festival of Excellence, April 2013.

Dean Dr. Patrick Clarke presented "Faith Based Cultural Force at a Regional Public Institution: Faculty Socialization In A Shifting Community Context" at the SUU Festival of Excellence, April 2013.



SUMMER 2013 • VOLUME 2 • ISSUE 2

INTRODUCTION

COMMUNITY ENGAGEMENT CENTER

CREATIVE ENGAGEMENT CENTER

OUTDOOR ENGAGEMENT CENTER

LEADERSHIP ENGAGEMENT CENTER

GLOBAL ENGAGEMENT CENTER

SCHOOL OF BUSINESS

COLLEGE OF EDUCATION & HUMAN
DEVELOPMENTCOLLEGE OF HUMANITIES &
SOCIAL SCIENCESCOLLEGE OF PERFORMING &
VISUAL ARTS

COLLEGE OF SCIENCE & ENGINEERING

SCHOOL OF CONTINUING AND
PROFESSIONAL STUDIES

UNIVERSITY COLLEGE

HONORS PROGRAM

LIBRARY

UGRASP

STUDENT SERVICES

FACULTY SCHOLARLY SUPPORT
FUND GRANTS

Honors Program

Presentations and Publications

Director Matt Nickerson and **Dr. Kyle Bishop** escorted 12 honors students to the Western Regional Honors Conference in Flagstaff, Ariz., April 2013. Dr. Bishop will be presenting "30 Days of Experiential Education".

Dr. Johnny MacLean presented "Honors and the National Parks: Assessing the Academic Rigor of Experiential Education" at the National Collegiate Honors Council Conference in Boston, Mass., in November 2012.

Prof. Matt Nickerson presented "The More the Merrier! Allowing Each Student to Choose His or Her Own Textbook" at the National Collegiate Honors Council Conference in Boston, Mass., in November 2012. He presented a variation of this speech at the SUU Festival of Excellence, April 2013.

Professor Matt Nickerson presented "National Parks as Campus, Classroom and Laboratory" at the SUU Festival of Excellence, April 2013.

Dr. Todd Petersen (English) and **Professor Matt Nickerson** presented "TEDx Summit in Doha, Qatar" at the SUU Festival of Excellence, April 2013.

Projects

Director Matt Nickerson organized a Partners in the Parks excursion for attendees of the National Collegiate Honors Council Conference conference, November 2012. Over 25 participants experienced presentations by National Park Rangers and behind the scene tours of multiple historic sites throughout Boston, Mass.

In February 2013, **Director Matt Nickerson** and **Dr. Briget Eastep**, Outdoor Engagement Center Director, escorted students on the annual overnight trip to the Cedar Breaks Yurt.

The Honors Program hosted six MAD Lectures throughout the academic year to help faculty, students and members of the community to share their passion during a one-hour presentation open to all members of the SUU community. Faculty presenters included **Dr. Kyle Bishop**, **Prof. Alisa Petersen** and **Dr. Bradley Cook**.

The Honors Program co-hosted the annual TEDxSUU event in conjunction with the Center for Creativity and Innovation. The night featured SUU faculty, students and members of the community. Presenters included: **Prof. Michael Bahr**, **Dr. Kevin Stein**, **Dr. Helen Boswell**, and **Dr. Kyle Bishop**.



SUU Honors students and faculty work together to set up for the 2013 TEDxSUU event



SUMMER 2013 • VOLUME 2 • ISSUE 2

INTRODUCTION
 COMMUNITY ENGAGEMENT CENTER
 CREATIVE ENGAGEMENT CENTER
 OUTDOOR ENGAGEMENT CENTER
 LEADERSHIP ENGAGEMENT CENTER
 GLOBAL ENGAGEMENT CENTER
 SCHOOL OF BUSINESS
 COLLEGE OF EDUCATION & HUMAN
 DEVELOPMENT
 COLLEGE OF HUMANITIES &
 SOCIAL SCIENCES
 COLLEGE OF PERFORMING &
 VISUAL ARTS
 COLLEGE OF SCIENCE & ENGINEERING
 SCHOOL OF CONTINUING AND
 PROFESSIONAL STUDIES
 UNIVERSITY COLLEGE
 HONORS PROGRAM
 LIBRARY
 UGRASP
 STUDENT SERVICES
 FACULTY SCHOLARLY SUPPORT
 FUND GRANTS

Dean: John Eye

Website: <http://www.li.suu.edu/>

Gerald R. Sherratt Library

LIBRARY

Faculty Publications and Presentations

Professor Richard Eissinger and **Tyree Jensen** presented "Co-Teaching Online Courses in Canvas: A View from the Trenches!" at the Southern Utah Education Conference in St. George, Utah, October 2012.

Professor Lorilyn Felix presented "Exploring the Future of Technical Services" at the Utah Library Association in Provo, Utah, May 2013.

Professor Stephen Irving presented "Intellectual Freedom in the World of Social Media and Google" at the Mountain Plains Library Association Conference in La Vista, Neb, October 2012.

Professor Stephen Irving presented "Taking Control of the Big Data in a Digital Age," at the Utah Library Association, Provo, UT, May 2013.

Professor Scott Lanning presented "Determinants of Success in an Online Information Literacy Course," at the Utah Library Association in Provo, Utah, May 2013.

Professor Linda Liebhardt presented "Utah Library Association Paraprofessional Certificate" at the SUU Festival of Excellence, April 2013.

Professor Matt Nickerson presented "The More, the Merrier: Allowing Students to Choose their Own Textbook," at the National Collegiate Honors Council Conference, Boston, Mass., November 2012.

Professor Verlene Schafer presented "The Re-education of Administration: What Administrators Need to Know about the Role of Libraries, Librarians, and Information Literacy," at the Utah Library Association, Provo, Utah, May 2013.

Projects

In 2010, the Sherratt Library began digitizing the Iron County Record, a local newspaper which began publication in the 1890s. The library was able to digitize the years 1891-1940 with the support of the National Endowment for the Humanities. The Friends of the Library have been able to raise enough funds to digitize through 1961 and may be viewed through *Utah Digital Newspapers* at digitalnewspapers.org.

The Sherratt Library was invited by the Union Pacific Railroad to provide a photograph display for their 150th anniversary celebration in Salt Lake City on July 24. The photographs are from the Special Collections photograph collection and were on exhibit in the Grand Hall of the Union Pacific Depot. University Archivist, **Paula Mitchell**, represented the Library and met with visitors and answered their questions about the historic photographs on display.



SUMMER 2013 • VOLUME 2 • ISSUE 2

- INTRODUCTION
- COMMUNITY ENGAGEMENT CENTER
- CREATIVE ENGAGEMENT CENTER
- OUTDOOR ENGAGEMENT CENTER
- LEADERSHIP ENGAGEMENT CENTER
- GLOBAL ENGAGEMENT CENTER
- SCHOOL OF BUSINESS
- COLLEGE OF EDUCATION & HUMAN DEVELOPMENT
- COLLEGE OF HUMANITIES & SOCIAL SCIENCES
- COLLEGE OF PERFORMING & VISUAL ARTS
- COLLEGE OF SCIENCE & ENGINEERING
- SCHOOL OF CONTINUING AND PROFESSIONAL STUDIES
- UNIVERSITY COLLEGE
- HONORS PROGRAM
- LIBRARY
- UGRASP
- STUDENT SERVICES
- FACULTY SCHOLARLY SUPPORT FUND GRANTS

Director: Dr. Paul Spruell

Website: <http://suu.edu/ugrasp/>



Bennion Administration Building

Undergraduate Research & Scholarship Program

The Undergraduate Research and Scholarship Program (UGRASP) at SUU is committed to fostering a community of scholars across all disciplines. As part of its mission, the program will encourage and support student-mentor collaborations in research and creative expression, preparing students to become the scholars, scientists, and leaders of tomorrow.

With national participation in undergraduate research at an all-time high, SUU is taking a leadership role by including research as a major emphasis in its new academic roadmap. UGRASP administrators eagerly anticipate the many ways in which students might best be served by the program.

Perhaps the most direct contribution of UGRASP is to provide funding for undergraduate research and scholarship conduction and dissemination. Grant awards of up to \$500 are available to students from all disciplines across campus.

Another highlight of the yearly activities of UGRASP was the annual *Utah Conference on Undergraduate Research* (UCUR), which was held at Utah State University in February. Based off the prestigious National Conference on Undergraduate Research, UCUR is a statewide conference dedicated to the dissemination of student research and creative activity. UGRASP will cover all expenses for students who present at this conference.

Vice President: Dr. Donna Eddleman

Website: <http://www.suu.edu/ss/vp/>



SUU's circle of Omicron Delta Kappa, the national leadership honor society, gives a donation to The Canyon Creek Women's Crisis Center located in Cedar City

Student Services

Presentations and Publications

Vice President of Student Services Donna Eddleman presented "Why Women Leaders Have a Role to Play: Challenging Common Stereotypes and Seizing Opportunity" at the SUU Leadership Conference, February 2013. This workshop focused on helping participants think critically about common stereotypes of women in leadership positions.

Projects and Grants

Lynne Brown and **Mark Davis** (Advancement Office and Student Support Center)

Jake Johnson and **Dr. Bill Heyborne** (advisors to the Omicron Delta Kappa Honor Society) participated in the Red Rock Relay fundraising effort. 11 students from SUU's Circle of Omicron Delta Kappa completed the 187-mile Red Rock Relay to raise funds for the honor society and the Canyon Creek Women's Crisis Center (CCWCC). On October 3, 2012 the members presented the CCWCC with a check for \$1,080 which will go to the Center's efforts to create an outreach center for the public.

Awards

Carmen Alldredge won the Friend of ASPIRE award at the ASPIRE regional conference, Billings, Mont., October 2012. Carmen is being recognized with the top regional ASPIRE award for a non-TRIO person who has supported the ideals and goals of TRIO programs and students.

SUU
SUMMIT

ONLINE

SUMMER 2013 • VOLUME 2 • ISSUE 2

INTRODUCTION

COMMUNITY ENGAGEMENT CENTER

CREATIVE ENGAGEMENT CENTER

OUTDOOR ENGAGEMENT CENTER

LEADERSHIP ENGAGEMENT CENTER

GLOBAL ENGAGEMENT CENTER

SCHOOL OF BUSINESS

COLLEGE OF EDUCATION & HUMAN
DEVELOPMENT

COLLEGE OF HUMANITIES &
SOCIAL SCIENCES

COLLEGE OF PERFORMING &
VISUAL ARTS

COLLEGE OF SCIENCE & ENGINEERING

SCHOOL OF CONTINUING AND
PROFESSIONAL STUDIES

UNIVERSITY COLLEGE

HONORS PROGRAM

LIBRARY

UGRASP

STUDENT SERVICES

FACULTY SCHOLARLY SUPPORT
FUND GRANTS



SUMMER 2013 • VOLUME 2 • ISSUE 2

- INTRODUCTION
- COMMUNITY ENGAGEMENT CENTER
- CREATIVE ENGAGEMENT CENTER
- OUTDOOR ENGAGEMENT CENTER
- LEADERSHIP ENGAGEMENT CENTER
- GLOBAL ENGAGEMENT CENTER
- SCHOOL OF BUSINESS
- COLLEGE OF EDUCATION & HUMAN DEVELOPMENT
- COLLEGE OF HUMANITIES & SOCIAL SCIENCES
- COLLEGE OF PERFORMING & VISUAL ARTS
- COLLEGE OF SCIENCE & ENGINEERING
- SCHOOL OF CONTINUING AND PROFESSIONAL STUDIES
- UNIVERSITY COLLEGE
- HONORS PROGRAM
- LIBRARY
- UGRASP
- STUDENT SERVICES
- FACULTY SCHOLARLY SUPPORT FUND GRANTS

Faculty Scholarly Support Fund Grants

Fall 2011- Spring 2012

Congratulations to the following faculty on being awarded grants for their research, presentations, and other special projects. For more information go to <http://www.suu.edu/academics/provost/pfdvl/>

September Grant Cycle

School of Business



Gerald Calvasina



Alan Hamlin



Griffin Edwards



Wayne Roberts



SUMMER 2013 • VOLUME 2 • ISSUE 2

INTRODUCTION
COMMUNITY ENGAGEMENT CENTER
CREATIVE ENGAGEMENT CENTER
OUTDOOR ENGAGEMENT CENTER
LEADERSHIP ENGAGEMENT CENTER
GLOBAL ENGAGEMENT CENTER
SCHOOL OF BUSINESS
COLLEGE OF EDUCATION & HUMAN DEVELOPMENT
COLLEGE OF HUMANITIES & SOCIAL SCIENCES
COLLEGE OF PERFORMING & VISUAL ARTS
COLLEGE OF SCIENCE & ENGINEERING
SCHOOL OF CONTINUING AND PROFESSIONAL STUDIES
UNIVERSITY COLLEGE
HONORS PROGRAM
LIBRARY
UGRASP
STUDENT SERVICES
FACULTY SCHOLARLY SUPPORT FUND GRANTS

Walter Maxwell Gibson College of Science and Engineering



Sarah Brown



James R. Chisholm



Mark Coleburg



Eric Freden



Jennifer Hargrave



Derek Hein

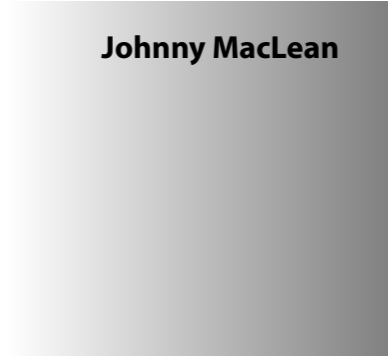


SUMMER 2013 • VOLUME 2 • ISSUE 2

- INTRODUCTION
- COMMUNITY ENGAGEMENT CENTER
- CREATIVE ENGAGEMENT CENTER
- OUTDOOR ENGAGEMENT CENTER
- LEADERSHIP ENGAGEMENT CENTER
- GLOBAL ENGAGEMENT CENTER
- SCHOOL OF BUSINESS
- COLLEGE OF EDUCATION & HUMAN DEVELOPMENT
- COLLEGE OF HUMANITIES & SOCIAL SCIENCES
- COLLEGE OF PERFORMING & VISUAL ARTS
- COLLEGE OF SCIENCE & ENGINEERING
- SCHOOL OF CONTINUING AND PROFESSIONAL STUDIES
- UNIVERSITY COLLEGE
- HONORS PROGRAM
- LIBRARY
- UGRASP
- STUDENT SERVICES
- FACULTY SCHOLARLY SUPPORT FUND GRANTS



Jana Lunt



Johnny MacLean



Christopher Monson

Beverly Taylor Sorenson College of Education and Human Development



Michael McGarvey



Nichole Wangsgard





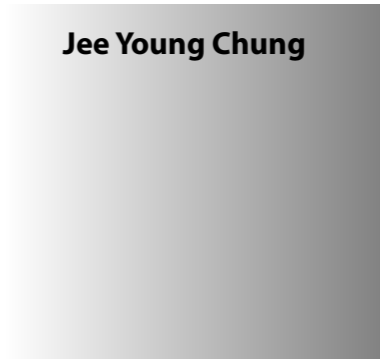
SUMMER 2013 • VOLUME 2 • ISSUE 2

INTRODUCTION
 COMMUNITY ENGAGEMENT CENTER
 CREATIVE ENGAGEMENT CENTER
 OUTDOOR ENGAGEMENT CENTER
 LEADERSHIP ENGAGEMENT CENTER
 GLOBAL ENGAGEMENT CENTER
 SCHOOL OF BUSINESS
 COLLEGE OF EDUCATION & HUMAN DEVELOPMENT
 COLLEGE OF HUMANITIES & SOCIAL SCIENCES
 COLLEGE OF PERFORMING & VISUAL ARTS
 COLLEGE OF SCIENCE & ENGINEERING
 SCHOOL OF CONTINUING AND PROFESSIONAL STUDIES
 UNIVERSITY COLLEGE
 HONORS PROGRAM
 LIBRARY
 UGRASP
 STUDENT SERVICES
 FACULTY SCHOLARLY SUPPORT FUND GRANTS

College of Humanities and Social Sciences



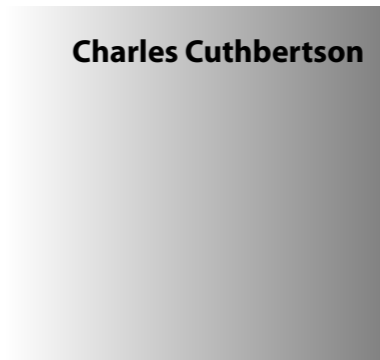
Bryce Christensen



Jee Young Chung



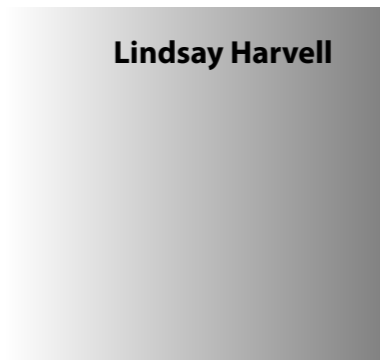
Julia Combs



Charles Cuthbertson



James W. Harrison



Lindsay Harvell



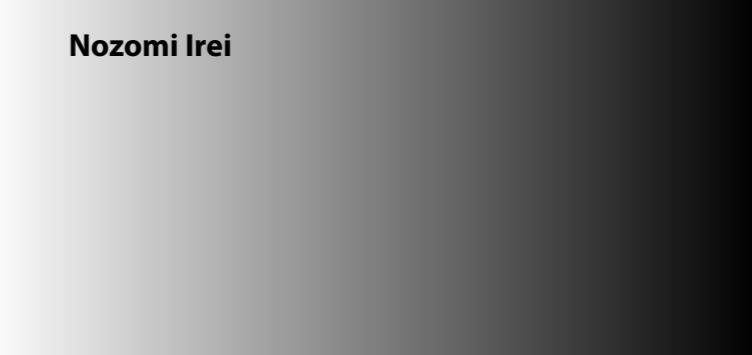


SUMMER 2013 • VOLUME 2 • ISSUE 2

- INTRODUCTION
- COMMUNITY ENGAGEMENT CENTER
- CREATIVE ENGAGEMENT CENTER
- OUTDOOR ENGAGEMENT CENTER
- LEADERSHIP ENGAGEMENT CENTER
- GLOBAL ENGAGEMENT CENTER
- SCHOOL OF BUSINESS
- COLLEGE OF EDUCATION & HUMAN DEVELOPMENT
- COLLEGE OF HUMANITIES & SOCIAL SCIENCES
- COLLEGE OF PERFORMING & VISUAL ARTS
- COLLEGE OF SCIENCE & ENGINEERING
- SCHOOL OF CONTINUING AND PROFESSIONAL STUDIES
- UNIVERSITY COLLEGE
- HONORS PROGRAM
- LIBRARY
- UGRASP
- STUDENT SERVICES
- FACULTY SCHOLARLY SUPPORT FUND GRANTS



John Howell



Nozomi Irei



Michelle Orihel



David W. Schwalb



Charla Strosser



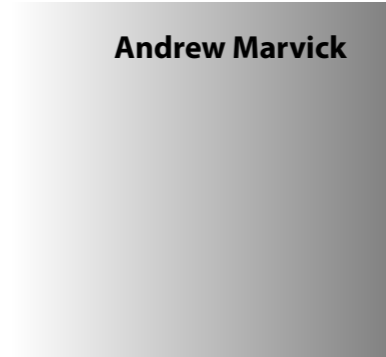
SUMMER 2013 • VOLUME 2 • ISSUE 2

- INTRODUCTION
- COMMUNITY ENGAGEMENT CENTER
- CREATIVE ENGAGEMENT CENTER
- OUTDOOR ENGAGEMENT CENTER
- LEADERSHIP ENGAGEMENT CENTER
- GLOBAL ENGAGEMENT CENTER
- SCHOOL OF BUSINESS
- COLLEGE OF EDUCATION & HUMAN DEVELOPMENT
- COLLEGE OF HUMANITIES & SOCIAL SCIENCES
- COLLEGE OF PERFORMING & VISUAL ARTS
- COLLEGE OF SCIENCE & ENGINEERING
- SCHOOL OF CONTINUING AND PROFESSIONAL STUDIES
- UNIVERSITY COLLEGE
- HONORS PROGRAM
- LIBRARY
- UGRASP
- STUDENT SERVICES
- FACULTY SCHOLARLY SUPPORT FUND GRANTS

College of Performing and Visual Arts



James Marchant



Andrew Marvick



November Grant Cycle

School of Business



Gerald Calvasina



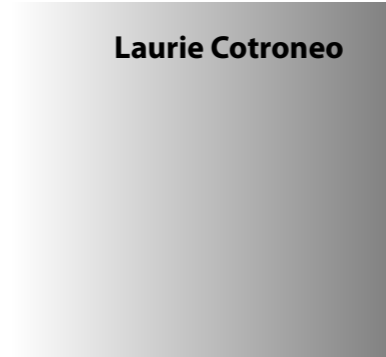
SUMMER 2013 • VOLUME 2 • ISSUE 2

- INTRODUCTION
- COMMUNITY ENGAGEMENT CENTER
- CREATIVE ENGAGEMENT CENTER
- OUTDOOR ENGAGEMENT CENTER
- LEADERSHIP ENGAGEMENT CENTER
- GLOBAL ENGAGEMENT CENTER
- SCHOOL OF BUSINESS
- COLLEGE OF EDUCATION & HUMAN DEVELOPMENT
- COLLEGE OF HUMANITIES & SOCIAL SCIENCES
- COLLEGE OF PERFORMING & VISUAL ARTS
- COLLEGE OF SCIENCE & ENGINEERING
- SCHOOL OF CONTINUING AND PROFESSIONAL STUDIES
- UNIVERSITY COLLEGE
- HONORS PROGRAM
- LIBRARY
- UGRASP
- STUDENT SERVICES
- FACULTY SCHOLARLY SUPPORT FUND GRANTS

Walter Maxwell Gibson College of Science and Engineering



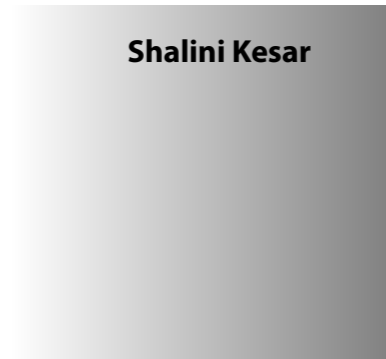
Jim Brandt



Laurie Cotroneo



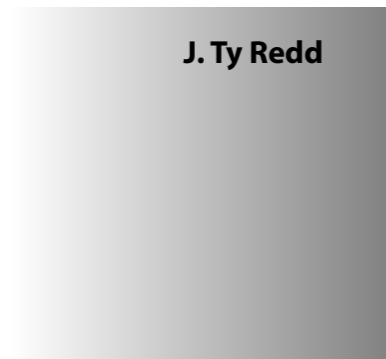
Jon Karpel



Shalini Kesar



Paul R. Larson



J. Ty Redd





SUMMER 2013 • VOLUME 2 • ISSUE 2

- INTRODUCTION
- COMMUNITY ENGAGEMENT CENTER
- CREATIVE ENGAGEMENT CENTER
- OUTDOOR ENGAGEMENT CENTER
- LEADERSHIP ENGAGEMENT CENTER
- GLOBAL ENGAGEMENT CENTER
- SCHOOL OF BUSINESS
- COLLEGE OF EDUCATION & HUMAN DEVELOPMENT
- COLLEGE OF HUMANITIES & SOCIAL SCIENCES
- COLLEGE OF PERFORMING & VISUAL ARTS
- COLLEGE OF SCIENCE & ENGINEERING
- SCHOOL OF CONTINUING AND PROFESSIONAL STUDIES
- UNIVERSITY COLLEGE
- HONORS PROGRAM
- LIBRARY
- UGRASP
- STUDENT SERVICES
- FACULTY SCHOLARLY SUPPORT FUND GRANTS



Gretchen Rimmasch



Robert Robertson



Mackay Steffensen

Beverly Taylor Sorenson College of Education and Human Development



Karen Houser



Michiko Kobayashi

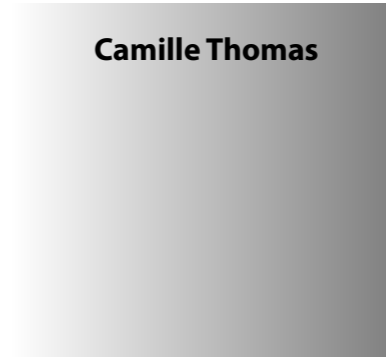


SUMMER 2013 • VOLUME 2 • ISSUE 2

- INTRODUCTION
- COMMUNITY ENGAGEMENT CENTER
- CREATIVE ENGAGEMENT CENTER
- OUTDOOR ENGAGEMENT CENTER
- LEADERSHIP ENGAGEMENT CENTER
- GLOBAL ENGAGEMENT CENTER
- SCHOOL OF BUSINESS
- COLLEGE OF EDUCATION & HUMAN DEVELOPMENT
- COLLEGE OF HUMANITIES & SOCIAL SCIENCES
- COLLEGE OF PERFORMING & VISUAL ARTS
- COLLEGE OF SCIENCE & ENGINEERING
- SCHOOL OF CONTINUING AND PROFESSIONAL STUDIES
- UNIVERSITY COLLEGE
- HONORS PROGRAM
- LIBRARY
- UGRASP
- STUDENT SERVICES
- FACULTY SCHOLARLY SUPPORT FUND GRANTS



Brian Lyons



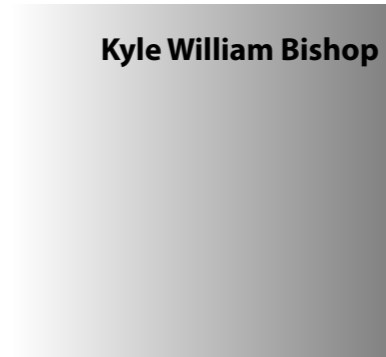
Camille Thomas



College of Humanities and Social Sciences



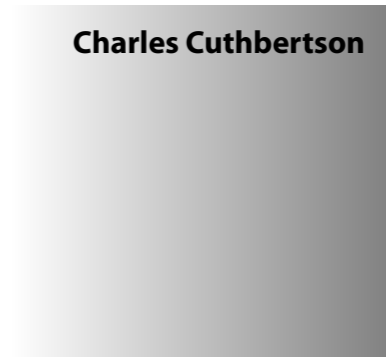
GE Kawika Allen



Kyle William Bishop



Bryce Christensen



Charles Cuthbertson



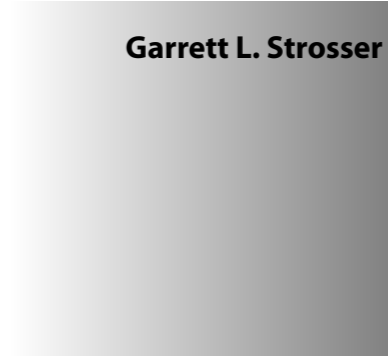


SUMMER 2013 • VOLUME 2 • ISSUE 2

- INTRODUCTION
- COMMUNITY ENGAGEMENT CENTER
- CREATIVE ENGAGEMENT CENTER
- OUTDOOR ENGAGEMENT CENTER
- LEADERSHIP ENGAGEMENT CENTER
- GLOBAL ENGAGEMENT CENTER
- SCHOOL OF BUSINESS
- COLLEGE OF EDUCATION & HUMAN DEVELOPMENT
- COLLEGE OF HUMANITIES & SOCIAL SCIENCES
- COLLEGE OF PERFORMING & VISUAL ARTS
- COLLEGE OF SCIENCE & ENGINEERING
- SCHOOL OF CONTINUING AND PROFESSIONAL STUDIES
- UNIVERSITY COLLEGE
- HONORS PROGRAM
- LIBRARY
- UGRASP
- STUDENT SERVICES
- FACULTY SCHOLARLY SUPPORT FUND GRANTS



David W. Schwab



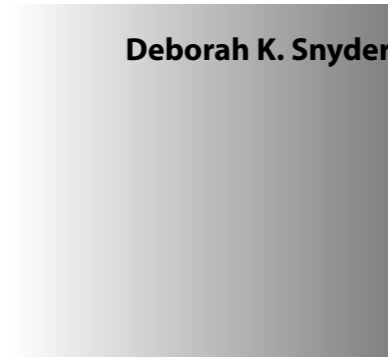
Garrett L. Strosser



College of Performing and Visual Arts



Andrew Marvick



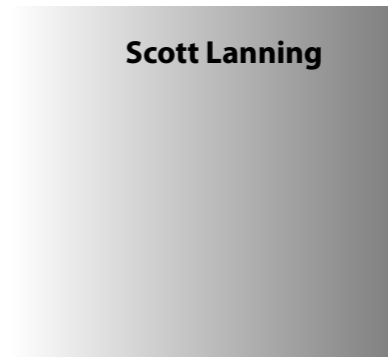
Deborah K. Snyder



Library



Richard Eissinger



Scott Lanning





SUMMER 2013 • VOLUME 2 • ISSUE 2

- INTRODUCTION
- COMMUNITY ENGAGEMENT CENTER
- CREATIVE ENGAGEMENT CENTER
- OUTDOOR ENGAGEMENT CENTER
- LEADERSHIP ENGAGEMENT CENTER
- GLOBAL ENGAGEMENT CENTER
- SCHOOL OF BUSINESS
- COLLEGE OF EDUCATION & HUMAN DEVELOPMENT
- COLLEGE OF HUMANITIES & SOCIAL SCIENCES
- COLLEGE OF PERFORMING & VISUAL ARTS
- COLLEGE OF SCIENCE & ENGINEERING
- SCHOOL OF CONTINUING AND PROFESSIONAL STUDIES
- UNIVERSITY COLLEGE
- HONORS PROGRAM
- LIBRARY
- UGRASP
- STUDENT SERVICES
- FACULTY SCHOLARLY SUPPORT FUND GRANTS



Phil Roche



Verlene Schafer



April Grant Cycle

School of Business



**Sophitmanee
Sukalakamala**

Walter Maxwell Gibson College of Science and Engineering



Chad Gasser



Jianlong Han





SUMMER 2013 • VOLUME 2 • ISSUE 2

- INTRODUCTION
- COMMUNITY ENGAGEMENT CENTER
- CREATIVE ENGAGEMENT CENTER
- OUTDOOR ENGAGEMENT CENTER
- LEADERSHIP ENGAGEMENT CENTER
- GLOBAL ENGAGEMENT CENTER
- SCHOOL OF BUSINESS
- COLLEGE OF EDUCATION & HUMAN DEVELOPMENT
- COLLEGE OF HUMANITIES & SOCIAL SCIENCES
- COLLEGE OF PERFORMING & VISUAL ARTS
- COLLEGE OF SCIENCE & ENGINEERING
- SCHOOL OF CONTINUING AND PROFESSIONAL STUDIES
- UNIVERSITY COLLEGE
- HONORS PROGRAM
- LIBRARY
- UGRASP
- STUDENT SERVICES
- FACULTY SCHOLARLY SUPPORT FUND GRANTS



Nasser Tadayon



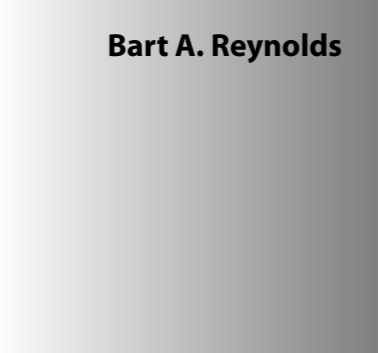
Cynthia Wright



Beverly Taylor Sorenson College of Education and Human Development



Tony Pellegrini



Bart A. Reynolds



College of Humanities and Social Sciences



Kyle William Bishop



Matthew H. Barton



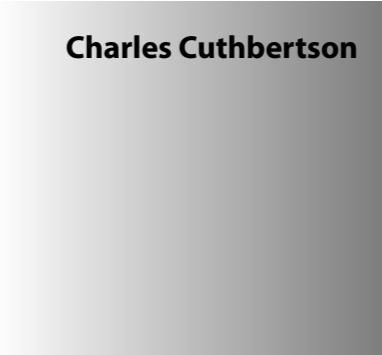


SUMMER 2013 • VOLUME 2 • ISSUE 2

- INTRODUCTION
- COMMUNITY ENGAGEMENT CENTER
- CREATIVE ENGAGEMENT CENTER
- OUTDOOR ENGAGEMENT CENTER
- LEADERSHIP ENGAGEMENT CENTER
- GLOBAL ENGAGEMENT CENTER
- SCHOOL OF BUSINESS
- COLLEGE OF EDUCATION & HUMAN DEVELOPMENT
- COLLEGE OF HUMANITIES & SOCIAL SCIENCES
- COLLEGE OF PERFORMING & VISUAL ARTS
- COLLEGE OF SCIENCE & ENGINEERING
- SCHOOL OF CONTINUING AND PROFESSIONAL STUDIES
- UNIVERSITY COLLEGE
- HONORS PROGRAM
- LIBRARY
- UGRASP
- STUDENT SERVICES
- FACULTY SCHOLARLY SUPPORT FUND GRANTS



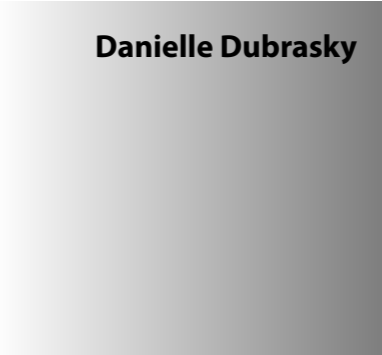
Bryce Christensen



Charles Cuthbertson



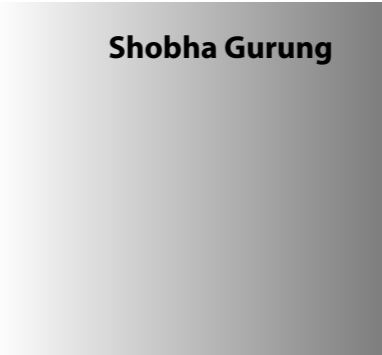
Emily Marie Dean



Danielle Dubrasky



Kirk Fitzpatrick



Shobha Gurung



James W. Harrison



Paul Husselbee





SUMMER 2013 • VOLUME 2 • ISSUE 2

- INTRODUCTION
- COMMUNITY ENGAGEMENT CENTER
- CREATIVE ENGAGEMENT CENTER
- OUTDOOR ENGAGEMENT CENTER
- LEADERSHIP ENGAGEMENT CENTER
- GLOBAL ENGAGEMENT CENTER
- SCHOOL OF BUSINESS
- COLLEGE OF EDUCATION & HUMAN DEVELOPMENT
- COLLEGE OF HUMANITIES & SOCIAL SCIENCES
- COLLEGE OF PERFORMING & VISUAL ARTS
- COLLEGE OF SCIENCE & ENGINEERING
- SCHOOL OF CONTINUING AND PROFESSIONAL STUDIES
- UNIVERSITY COLLEGE
- HONORS PROGRAM
- LIBRARY
- UGRASP
- STUDENT SERVICES
- FACULTY SCHOLARLY SUPPORT FUND GRANTS



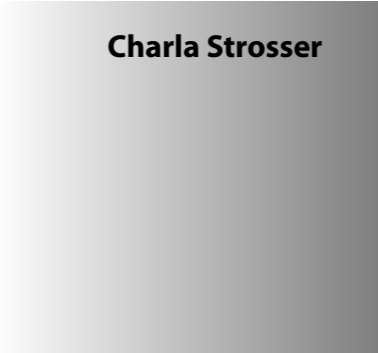
Michael Ostrowsky



Patricia Paystrup



Kevin A. Stein



Charla Strosser

