



SPRING 2014 • VOLUME 3 • ISSUE 1

INTRODUCTION  
COMMUNITY ENGAGEMENT CENTER  
CREATIVE ENGAGEMENT CENTER  
OUTDOOR ENGAGEMENT CENTER  
LEADERSHIP ENGAGEMENT CENTER  
GLOBAL ENGAGEMENT CENTER  
SCHOOL OF BUSINESS  
COLLEGE OF EDUCATION & HUMAN  
DEVELOPMENT  
COLLEGE OF HUMANITIES &  
SOCIAL SCIENCES  
COLLEGE OF PERFORMING &  
VISUAL ARTS  
COLLEGE OF SCIENCE & ENGINEERING  
SCHOOL OF CONTINUING AND  
PROFESSIONAL STUDIES  
UNIVERSITY COLLEGE  
HONORS PROGRAM  
LIBRARY  
UGRASP  
STUDENT SERVICES  
FACULTY SCHOLARLY SUPPORT  
FUND GRANTS

SOUTHERN UTAH UNIVERSITY PROVOST'S OFFICE, PROFILING FACULTY EXCELLENCE • Spring 2014

# SUU

## S U M M I T



# Community Engagement Center



SPRING 2014 • VOLUME 3 • ISSUE 1

INTRODUCTION

COMMUNITY ENGAGEMENT CENTER

CREATIVE ENGAGEMENT CENTER

OUTDOOR ENGAGEMENT CENTER

LEADERSHIP ENGAGEMENT CENTER

GLOBAL ENGAGEMENT CENTER

SCHOOL OF BUSINESS

COLLEGE OF EDUCATION & HUMAN  
DEVELOPMENT

COLLEGE OF HUMANITIES &  
SOCIAL SCIENCES

COLLEGE OF PERFORMING &  
VISUAL ARTS

COLLEGE OF SCIENCE & ENGINEERING

SCHOOL OF CONTINUING AND  
PROFESSIONAL STUDIES

UNIVERSITY COLLEGE

HONORS PROGRAM

LIBRARY

UGRASP

STUDENT SERVICES

FACULTY SCHOLARLY SUPPORT  
FUND GRANTS



# WELCOME

This issue of Summit illustrates some of the many ways that faculty and staff at Southern Utah University model “an academic community wherein collaboration, diversity, respect for all people, concern for the environment, civility, and shared governance are cultivated” (from the university’s Core Theme “Social and Community Responsibility”). In particular, these values are embodied by the faculty and staff of the Community Engagement Center and those engaged with service learning.

The Community Engagement Center is one of the oldest and largest of the engagement centers on campus. And though much of its work centers around providing service opportunities for students (and helping students identify their own opportunities), the CEC also supports efforts of faculty and staff who want to connect their academic work—particularly teaching and research—to the surrounding community.

Additional articles focus on exemplary educators at SUU, including four individuals who have recently been recognized for outstanding efforts in service learning, and Dean of Education, Dr. Deb Hill, who recently returned from a Fulbright to Finland. In an interview, Dr. Earl Mulderink (director of the CEC) explains the evolving nature of service learning—and why the university is considering a shift from “service learning” to “community-engaged learning.”

Despite the variety of approaches to community engagement, each of the individuals and institutions profiled in this issue shares a common goal: to enrich the learning and heighten the engagement of students at SUU.



**This table of contents is interactive. If you want to go straight to a specific school, college or area simply mouse over the text and click.**

Regards,

**Brad Cook**  
SUU Provost

Director: Earl Mulderink

Website: <http://suu.edu/uc/cec/>



Community Engagement Center

### Center Highlights

For the first time, the CEC was awarded the 2013 President's Higher Education Community Service Honor Roll with Distinction by the Corporation for National and Community Service. This represents the fourth successive year that SUU has been named to this service Honor Roll.

# Community Engagement Center

## Publications and Presentations

The CEC collaborated with the Women and Gender Studies Program in planning and hosting an academic conference focused on domestic violence with the theme of "Men, Women, & Violence: Everyone Matters." CEC Director Dr. Earl Mulderink served on the planning committee and was pleased to invite keynote presenter Michele Weldon of Northwestern University and author of *I Closed My Eyes*. The two-day conference, held in the Hunter Conference Center on March 27 and 28, 2013, encouraged interaction among students, faculty, staff, community partners, and social work professionals, many of whom were able to earn CEU's. See SUU press release at <http://suu.edu/news/2013/03/women--gender-studies-conference-to-prove-everyone-matters.html>

**Dr. Earl Mulderink** and Rita Osborn (Director of SUU's Rural Health Scholars Program) co-presented "Matching Theory and Practice in International Service-Learning (ISL)" at the 4th Asia-Pacific Regional Conference on Service-Learning, Lingnan University, Hong Kong, June 4-6, 2013.

**Pam Branin** (associate director) co-presented at the Utah Leadership Academy annual conference in May 2013, with Mike Moon of Weber State University's Community Involvement Center.

**Pam Branin** presented on a panel representing SUU's EDGE program at the conference on the Scholarship of Teaching and Engagement, Utah Valley University, May 2013.

## Leadership

**Dr. Earl Mulderink** (Director CEC) represented SUU on the Steering Committee of the Utah Campus Compact and the UCC's Faculty Development Network, and helped plan the Moab Engaged Faculty Institute in February 2013.

**Dr. Earl Mulderink** also served on conference planning committees for the 15th Annual Continuums of Service Conference (April 2013 in Portland), sponsored by the Western Campus Compact Consortium.

SUU  
SUMMIT

ONLINE

SPRING 2014 • VOLUME 3 • ISSUE 1

INTRODUCTION

COMMUNITY ENGAGEMENT CENTER

CREATIVE ENGAGEMENT CENTER

OUTDOOR ENGAGEMENT CENTER

LEADERSHIP ENGAGEMENT CENTER

GLOBAL ENGAGEMENT CENTER

SCHOOL OF BUSINESS

COLLEGE OF EDUCATION & HUMAN  
DEVELOPMENT

COLLEGE OF HUMANITIES &  
SOCIAL SCIENCES

COLLEGE OF PERFORMING &  
VISUAL ARTS

COLLEGE OF SCIENCE & ENGINEERING

SCHOOL OF CONTINUING AND  
PROFESSIONAL STUDIES

UNIVERSITY COLLEGE

HONORS PROGRAM

LIBRARY

UGRASP

STUDENT SERVICES

FACULTY SCHOLARLY SUPPORT  
FUND GRANTS



SPRING 2014 • VOLUME 3 • ISSUE 1

INTRODUCTION

COMMUNITY ENGAGEMENT CENTER

CREATIVE ENGAGEMENT CENTER

OUTDOOR ENGAGEMENT CENTER

LEADERSHIP ENGAGEMENT CENTER

GLOBAL ENGAGEMENT CENTER

SCHOOL OF BUSINESS

COLLEGE OF EDUCATION & HUMAN  
DEVELOPMENT

COLLEGE OF HUMANITIES &  
SOCIAL SCIENCES

COLLEGE OF PERFORMING &  
VISUAL ARTS

COLLEGE OF SCIENCE & ENGINEERING

SCHOOL OF CONTINUING AND  
PROFESSIONAL STUDIES

UNIVERSITY COLLEGE

HONORS PROGRAM

LIBRARY

UGRASP

STUDENT SERVICES

FACULTY SCHOLARLY SUPPORT  
FUND GRANTS



**Student volunteering at the Iron County  
Holiday Assistance Program**

**Pam Branin** (Associate Director CEC) serves as a member of the Iron County Volunteer Center Advisory Board, the USU Youth and Families with Promise/4H Advisory Board, as well as the Planning Committee for the 2013 Lieutenant Governor's Conference on Service. In addition, she is the lead organizer for the Iron County Holiday Assistance Program and chairs the "Community of Interest" group for the Utah Campus Compact

**Veronica Cazares** (administrative assistant) participated in a number of professional development events that included the Lead, Share, Build Leadership Conference at SUU, February 28 - March 1, 2013. She has also continued to serve as an Iron County Court Appointed Special Advocate (CASA).

**Gabrielle Strand** (program coordinator) participated in Utah Campus Compact AmeriCorps Program Campus Coordinator Trainings, and she continues as an Iron County Court Appointed Special Advocate (CASA).

**Patricia Palmer** (VISTA volunteer) attended Utah Campus Compact trainings in Bear Lake, Utah, and Provo, Utah, along with participating in an online grants-writing course by the Corporation for National and Community Service and VISTA in Spring 2013.

### Utah Campus Compact

Since 2011, the CEC has partnered with Utah Campus Compact in a grant through the Corporation for National and Community Service that provides SUU with one of eleven VISTAs (Volunteers in Service to America) within the state. VISTAs focus on leveraging campus resources to meet poverty-related community needs and encourage Utah college students to be civically-engaged citizens by expanding service learning capabilities at each institution.

**Pat Palmer** began her one-year term in November 2012 and has since updated our community partner directory and expanded it with websites and social media information. She has also developed a video series about local volunteer opportunities, such as those with Canyon Creek Women's Crisis Center, The Family Support Center of Southwestern Utah, Iron County Children's Justice Center, and Iron County Care & Share. Pat has been involved also with supporting CEC programs that include Bread & Soup Nite, Iron County Holiday Assistance Program, Flamingo Flock Patrol, and the annual Thank You & Recognition Event.

The CEC continued to support SUU student participants in the federal AmeriCorps Scholarship program, with funding and logistical support from the Utah Campus



SPRING 2014 • VOLUME 3 • ISSUE 1

## INTRODUCTION

COMMUNITY ENGAGEMENT CENTER

CREATIVE ENGAGEMENT CENTER

OUTDOOR ENGAGEMENT CENTER

LEADERSHIP ENGAGEMENT CENTER

GLOBAL ENGAGEMENT CENTER

SCHOOL OF BUSINESS

COLLEGE OF EDUCATION & HUMAN  
DEVELOPMENT

COLLEGE OF HUMANITIES &  
SOCIAL SCIENCES

COLLEGE OF PERFORMING &  
VISUAL ARTS

COLLEGE OF SCIENCE & ENGINEERING

SCHOOL OF CONTINUING AND  
PROFESSIONAL STUDIES

UNIVERSITY COLLEGE

HONORS PROGRAM

LIBRARY

UGRASP

STUDENT SERVICES

FACULTY SCHOLARLY SUPPORT  
FUND GRANTS

Compact. Administered through the CEC by Gabrielle Strand, the 2012-2013 program had 48 student members who received on average an award of \$1,175, for a total value of over \$56,000 to SUU students. These students (drawn from the Nursing, Education, and Rural Health Scholars programs) engaged in 14,400 hours of service.

Engaged Faculty Institute. Supporting its mission as a Carnegie community-engaged institution, SUU sent a ten-person team to the Utah Campus Compact Engaged Faculty Institute in Moab, UT, on February 8-9, 2013. The two-day gathering focused on "The Engaged Campus." SUU had the largest contingent among Utah's colleges and universities, along with the largest number of presenters (eight). After hearing about SUU's engagement initiatives, a colleague from a Wasatch Front school told the crowd, "You guys are rocking down there!" SUU presenters included **Dr. Lisa Assante** (Business); **Dr. Steve Barney** (Psychology and Faculty Senate President); **David Baxley** (HSS Student); **Pam Branin** (CEC); **Professor Nica Clark** (Nutrition); **Dr. Briget Eastep** (Outdoor Engagement Center, Physical Education); **Dr. Earl Mulderink** (CEC and History); **Dr. Wynne Summers** (English). Dr. Mulderink and Dr. Eastep co-presented "Enhancing Engagement Through Experiential Education: SUU's EDGE Program."

## Awards

The Community Engagement Center hosted an end-of-year celebratory event in the Starlight Room on April 17, 2013. Advertised as a campus and community recognition event, the gala included public recognition of the 2013 Service-Learning Fellows and Utah Campus Compact honorees.

The 2013 Service Learning Fellows are: **Dr. Jacqueline Grant** (Biology) and **Professor Peggy Wittwer** (Education). Dr. Grant promotes service learning in the Biology capstone course, Conservation Biology. Professor Wittwer champions service learning in traditional and unique environments, including the Mountain Center Summer Science Camp and various courses in Education.

The 2013 Utah Campus Compact Honorees include the following: The 2013 SUU Civically Engaged Scholar is **Professor Dean Winward** (Agriculture), for 2013 SUU Civically Engaged Scholar, and **Rita Osborn** (Associate Director for the Utah Center for Rural Health) for 2013 SUU Civically Engaged Staff. The 2013 SUU Civically Engaged Student is David Baxley. The 2013 SUU Committed Community Partner is the Reverend Susan Allman of St. Jude's Episcopal Church. More information on these awards can be found here: <http://www.utahcampuscompact.org/awards/ucc-awards-southern-utah-university>

<http://www.utahcampuscompact.org/awards/ucc-awards-southern-utah-university>

The Community Engagement Center was honored to receive SUU's High Altitude Award for Spring 2013 with an announcement made by interim President Rich Kendell at the university's opening meeting in August 2013. Offered twice each year, this award highlights a department or office for "exceptional dedication to quality service."

Director Todd Peterson

Website: <http://suu.edu/uc/creative/>



TEDxSUU setup on the Church Auditorium stage

# Creative Engagement Center

The Creative Engagement Center manages the “Creativity and Innovation” track within the SUU EDGE Program and advises students who have chosen a Creativity and Innovation EDGE Track. In addition to curricular matters, the Center and its advisory council also develop and oversee creativity-based co-curricular activities. We also provide access to networks and resources for SUU students, faculty, and community members.

The SUU Creativity Center recently partnered with the SUU Honors department to host a TEDxSUU event. TEDx events are independently organized and follow in the spirit of the global TED conferences that take place twice a year. TEDx events are based on the belief that ideas are powerful and can initiate change in a community.

Six speakers spoke on a variety of topics, ranging from the anatomy of an apology, how thinking outside the box requires the existence of a box, the connections between science and fantasy novels, what has happened to male identity, and how ideas can be like the zombie apocalypse. The speakers were **Dr. Kevin Stein** (Communication), **Dr. Helen Boswell** (Biology), **Dr. Kyle Bishop** (English), **Michael Bahr** (Education Director, Utah Shakespeare festival), Melanie Skankey (Art Educator), and Chase Harrison (SUU student). The event also featured a performance from the SUU Percussion Ensemble and a modern dance piece from SUU student dancers. Video content from TED.com was included in the night’s presentations.

The event was recorded, and videos are available on YouTube (or from the TEDxSUU’s facebook page: [facebook.com/tedxsuu](https://www.facebook.com/tedxsuu)). The event was also livestreamed, giving viewers a chance to watch the event from off campus. Next year’s event is already in the works for 2014. For information on this year’s event and future events, use the following contact information.

Facebook: [facebook.com/tedxsuu](https://www.facebook.com/tedxsuu)

Twitter: @tedxsuu and/or #tedxsuu

Web: [suu.edu/tedx](http://suu.edu/tedx)



SPRING 2014 • VOLUME 3 • ISSUE 1

INTRODUCTION

COMMUNITY ENGAGEMENT CENTER

CREATIVE ENGAGEMENT CENTER

OUTDOOR ENGAGEMENT CENTER

LEADERSHIP ENGAGEMENT CENTER

GLOBAL ENGAGEMENT CENTER

SCHOOL OF BUSINESS

COLLEGE OF EDUCATION & HUMAN DEVELOPMENT

COLLEGE OF HUMANITIES & SOCIAL SCIENCES

COLLEGE OF PERFORMING & VISUAL ARTS

COLLEGE OF SCIENCE & ENGINEERING

SCHOOL OF CONTINUING AND PROFESSIONAL STUDIES

UNIVERSITY COLLEGE

HONORS PROGRAM

LIBRARY

UGRASP

STUDENT SERVICES

FACULTY SCHOLARLY SUPPORT FUND GRANTS



SPRING 2014 • VOLUME 3 • ISSUE 1

- INTRODUCTION
- COMMUNITY ENGAGEMENT CENTER
- CREATIVE ENGAGEMENT CENTER
- OUTDOOR ENGAGEMENT CENTER
- LEADERSHIP ENGAGEMENT CENTER
- GLOBAL ENGAGEMENT CENTER
- SCHOOL OF BUSINESS
- COLLEGE OF EDUCATION & HUMAN DEVELOPMENT
- COLLEGE OF HUMANITIES & SOCIAL SCIENCES
- COLLEGE OF PERFORMING & VISUAL ARTS
- COLLEGE OF SCIENCE & ENGINEERING
- SCHOOL OF CONTINUING AND PROFESSIONAL STUDIES
- UNIVERSITY COLLEGE
- HONORS PROGRAM
- LIBRARY
- UGRASP
- STUDENT SERVICES
- FACULTY SCHOLARLY SUPPORT FUND GRANTS

Director: Briget Eastep

Website: <http://suu.edu/uc/outdoor/>



Harry Reid Outdoor Engagement Center

### Center Highlights

The Harry Reid Outdoor Engagement Center is currently working on a process for faculty to get risk management, logistical, and monetary support for outdoor learning experiences. This program has begun on a case by case basis Fall 2013 and will put it out formally when HROEC updates their website.

# Harry Reid Outdoor Engagement Center

Driven by our mission,

*Inspired by southern Utah's diverse naturescape, The Harry Reid Center for Outdoor Engagement fosters interdisciplinary learning, service, civic engagement, advanced research, and student scholarship. The center brings together students, faculty, and community members from across the globe to explore new and innovative outdoor themes; construct forums where knowledge is shared debated, and disseminated; and create new vistas of understanding and stewardship opportunities in a myriad of engaged learning environments. The center's unique focus of outdoor engagement serves to inspire all individuals to progressively engage in outdoor learning, service, and leadership that actively improve the outdoor experience for everyone.*

The HROEC would like to share our accomplishments and initiatives from 2013's summer and fall. From our mission we celebrate outdoor learning opportunities by promoting interdisciplinary learning, service, scholarship, stewardship, and leadership.

The Harry Reid Outdoor Engagement Center (HROEC) aims to involve SUU students and faculty in the outdoors at three levels. The first is recreational—"pure fun," as director Briget Eastep terms it. The second level is that of skill development: providing opportunities for life-long learning, technical skills, leadership, and outdoor skills. The third level is that of career development; for instance, furthering an interest in geology, agricultural sciences, outdoor recreation, and so forth.

### Presentations

**Dr. Briget Eastep** (HROEC Director), B. Lindley, and Marcia Gilles presented "Higher Education and Public Lands: Using Partnerships to Create Experiential Learning Opportunities." Association for Experiential Education International Conference, Denver, CO, October 31.

**Dr. Briget Eastep** and **Jacob Manning** (Guest Lecturer in Outdoor Recreation in Parks and Tourism) presented "Into the Woods and Out of Your Comfort Zone? Why Not?" at the Utah Women In Higher Education Workshop, Southern Utah University, October 4.



SPRING 2014 • VOLUME 3 • ISSUE 1

- INTRODUCTION
- COMMUNITY ENGAGEMENT CENTER
- CREATIVE ENGAGEMENT CENTER
- OUTDOOR ENGAGEMENT CENTER
- LEADERSHIP ENGAGEMENT CENTER
- GLOBAL ENGAGEMENT CENTER
- SCHOOL OF BUSINESS
- COLLEGE OF EDUCATION & HUMAN DEVELOPMENT
- COLLEGE OF HUMANITIES & SOCIAL SCIENCES
- COLLEGE OF PERFORMING & VISUAL ARTS
- COLLEGE OF SCIENCE & ENGINEERING
- SCHOOL OF CONTINUING AND PROFESSIONAL STUDIES
- UNIVERSITY COLLEGE
- HONORS PROGRAM
- LIBRARY
- UGRASP
- STUDENT SERVICES
- FACULTY SCHOLARLY SUPPORT FUND GRANTS

**Active Research Projects**

**Dr. Emily Dean** (Anthropology) and **Dr. Briget Eastep** are currently researching “Leave No Trace: Investigating 50 years of backpacking impacts in the southwest.”

**Dr. Briget Eastep** and **David Maxwell** (GIS/GPS lab director) are working on a project, “Monitoring Recreation Impacts in Red Cliff Desert Reserve.”

**Projects**

The Bryce Canyon Faculty retreat was held on April 13 as a day event open to families. The goal of the excursion was to promote interdisciplinary teaching, service learning, and research by gathering in a beautiful place and interacting with Bryce Canyon National Park staff. The event included lunch and a guided hike.

Outdoor EDGE projects have been inspiring this year. Students are participating in undergraduate research, completing internships or volunteering with public lands (through the IIC), working seasonally with scouts and other outdoor organizations, planning significant expeditions, leading outdoor clubs, creating art inspired by natural landscapes, and leading peers and youth in outdoor discovery excursions.

The Outdoor Education Series had a full schedule this fall considering the outdoors from many different perspectives, including drumming, gear, hot springs, wrens, outdoor cooking, outdoor documentaries, elk migration, canyoneering research, and SUU’s outdoor program turning ten.



**Students working on an outdoor service project**



Interim Director: Katy Herbold

Website: <http://suu.edu/uc/leadership/>



Leadership Engagement Center

### Center Highlights

The LEC hosted their first, successful Leadership Conference (Lead, Share, Build) February 28 - March 1, 2013. Students and faculty presented on a variety of topics, from business leadership to education leadership, from the roles of women in leadership to the value of communication.

To learn more about the Leadership Engagement Center or find out more about LEC events, stop by 561 W. University Blvd. or visit the LEC social media sites: On Facebook, SUU LEC; [twitter.com/SUULEC](https://twitter.com/SUULEC); or [suulec.blogspot.com](http://suulec.blogspot.com). Calling 435-586-1910 will put you in touch with Brandy Holm, Student Liaison, Cindi Endter, Program Specialist, or Interim Director, Dr. Katy Herbold.

# Leadership Engagement Center

This is the second year for the newly launched Leadership Engagement Center. The primary function of the LEC is to support students who are launching their EDGE Projects with a focus on leadership. Secondary to that, the LEC serves as an interactive, dynamic influence for SUU and the community to increase leadership understanding and skills in individuals, groups and organizations.

### Projects

The Leadership Engagement center has submitted a request to offer the Rebels of the Renaissance: A Field Study of Change Leadership in Rome, Florence and Venice. The study abroad opportunities will be for Spring Break, Maymester and/or summer, if approved.

The Leadership Engagement Center hosted a Pecha Kucha Night this Fall, on November 6, 2013. Pecha Kucha is a presentation format in which the presenter does a brief, informal sharing of a topic using a 20 slide presentation with each slide lasting just 20 seconds, making each presentation less than 7 minutes. This fast paced, fun event is an opportunity for students and faculty to share their work and ideas.

Finally, the LEC is collaborating with Women and Gender Studies for a conference on leadership in Spring 2014.



SPRING 2014 • VOLUME 3 • ISSUE 1

INTRODUCTION

COMMUNITY ENGAGEMENT CENTER

CREATIVE ENGAGEMENT CENTER

OUTDOOR ENGAGEMENT CENTER

LEADERSHIP ENGAGEMENT CENTER

GLOBAL ENGAGEMENT CENTER

SCHOOL OF BUSINESS

COLLEGE OF EDUCATION & HUMAN DEVELOPMENT

COLLEGE OF HUMANITIES & SOCIAL SCIENCES

COLLEGE OF PERFORMING & VISUAL ARTS

COLLEGE OF SCIENCE & ENGINEERING

SCHOOL OF CONTINUING AND PROFESSIONAL STUDIES

UNIVERSITY COLLEGE

HONORS PROGRAM

LIBRARY

UGRASP

STUDENT SERVICES

FACULTY SCHOLARLY SUPPORT FUND GRANTS



SPRING 2014 • VOLUME 3 • ISSUE 1

INTRODUCTION  
COMMUNITY ENGAGEMENT CENTER  
CREATIVE ENGAGEMENT CENTER  
OUTDOOR ENGAGEMENT CENTER  
LEADERSHIP ENGAGEMENT CENTER  
GLOBAL ENGAGEMENT CENTER  
SCHOOL OF BUSINESS  
COLLEGE OF EDUCATION & HUMAN DEVELOPMENT  
COLLEGE OF HUMANITIES & SOCIAL SCIENCES  
COLLEGE OF PERFORMING & VISUAL ARTS  
COLLEGE OF SCIENCE & ENGINEERING  
SCHOOL OF CONTINUING AND PROFESSIONAL STUDIES  
UNIVERSITY COLLEGE  
HONORS PROGRAM  
LIBRARY  
UGRASP  
STUDENT SERVICES  
FACULTY SCHOLARLY SUPPORT FUND GRANTS

Director: Kurt Harris

Website: <http://suu.edu/uc/global/>



Sargon Heinrich  
Global Engagement Center

### Center Highlights

SUU's Global Engagement Center continues to work toward establishing an American cultural center at Hunan Normal University in China. Undergraduate Business student, Alecia Hunter, spent part of spring semester and summer helping get the center up and running. This fall, Dr. Kevin Stein (Communication) takes over as deputy director, assisted by Jay Sorenson, a graduate student in professional communication. An opening ceremony for the center is planned for January 2014.

# Sargon Heinrich Global Engagement Center

## Academic Conference

The Sargon Heinrich Global Engagement Center Conference, held February 7-8 this year, was titled "Socio-economic Development in Africa." Attendees totaled nearly 500 at the events. The keynote speaker was Hassan Jallow, chief prosecutor of the International Criminal Tribunal for Rwanda, the court established by the United Nations to try those responsible for the Rwandan genocide in 1994; a dozen other presenters with a wide range of experience also shared their expertise at the conference.

## Publications and Presentations

Dr. Kurt Harris (director), along with students Sarah Rose Webber and Stephanie George presented "Experiential Education and the Excellence Edge" at the AAC&U General Education and Assessment Conference, Boston MA, March 2, 2013. They presented to an audience of approx. 100 educators the theory behind the value of experiential education, how SUU created its EDGE program, and what the early results of the EDGE program have been.

## Student Exchange programs

Over 200 SUU students and 35 faculty members traveled abroad on University-related study, service, research, and teaching activities last year.

The Global Engagement Center added eight universities to its list of places SUU students can study on exchange for one or two semesters: the new partners are in Argentina, Denmark, France, Germany, Japan (Sapporo and Okinawa), Scotland, and South Korea.

## EDGE program

Currently, 85 students have completed or proposed Global EDGE projects.



SPRING 2014 • VOLUME 3 • ISSUE 1

INTRODUCTION

COMMUNITY ENGAGEMENT CENTER

CREATIVE ENGAGEMENT CENTER

OUTDOOR ENGAGEMENT CENTER

LEADERSHIP ENGAGEMENT CENTER

GLOBAL ENGAGEMENT CENTER

SCHOOL OF BUSINESS

COLLEGE OF EDUCATION & HUMAN  
DEVELOPMENT

COLLEGE OF HUMANITIES &  
SOCIAL SCIENCES

COLLEGE OF PERFORMING &  
VISUAL ARTS

COLLEGE OF SCIENCE & ENGINEERING

SCHOOL OF CONTINUING AND  
PROFESSIONAL STUDIES

UNIVERSITY COLLEGE

HONORS PROGRAM

LIBRARY

UGRASP

STUDENT SERVICES

FACULTY SCHOLARLY SUPPORT  
FUND GRANTS

Dean: Carl Templin

Website: <http://suu.edu/business/>



Dixie Leavitt Business Building with The Carter Carillon in the background

### School of Business Highlights

**Dr. Alan Hamlin** served as the conference chair for the 55th Annual Mountain Plains Management Conference, which was held at Southern Utah University, October 16-19, 2013. Dr. Hamlin was assisted in conference planning by **Dr. Gerald Calvasina** and **Dr. David Tufte**.

The Mountain Plains Management Conference is an annual gathering of scholars and others interested in sharing research and discussing relevant and contemporary issues in all areas of business, including Management, Marketing, Finance, Economics, Accounting, Computer Information Systems, and other related areas.

# SCHOOL OF BUSINESS

## Accounting

### Publications and Presentations

**Dr. Jeff Barnes, Dr. David Christensen, and Dr. Tyler Stillman** (Management) published "Organizational Leadership and Subordinate Effect in the CPA Profession" in the Journal of Applied Business Research 29/5 (Sep/Oct 2013): 1567-1582.

**Dr. Jeff Barnes, Dr. David Christensen, and Dr. Tyler Stillman** presented "Organizational Leadership and Subordinate Effect in a Western State's CPA Profession" at the 2013 Leadership Engagement Conference, Cedar City, UT, 28 February 2013.

**Dr. Jeff Barnes** published his dissertation, "Organizational Leadership and Ethical Climate in Utah's Public Accounting Profession" in the Pro Quest Dissertation Database (April 2013).

**Dr. David Christensen and Dr. Robin Boneck** published "Escalating Commitment to a Failing Project: The Case of the A-12 Stealth Bomber" in the IMA Educational Case Journal 6/3 (September 2013).

**Dr. David Christensen and Dr. Robin Boneck** published "Teaching Notes to Escalating Commitment to a Failing Project: The Case of the A-12 Stealth Bomber" in the IMA Educational Case Journal 6/3 (September 2013).

Dr. Lawrence A. Gordon and **Dr. Amanda L. Wilford** published "An Analysis of Multiple Consecutive Years of Material Weaknesses in Internal Control," in The Accounting Review 87 (6): 2027 - 2060.

### Awards/Accomplishments

**Professor Robin Boneck** won the "Red-handed Award," for quality service to the VITA program.

**Professor Mary Pearson** was selected as SUU's Outstanding Educator.

**Dr. David Rees** was designated the 2013 Beta Gamma Sigma Outstanding Business Educator.



SPRING 2014 • VOLUME 3 • ISSUE 1

INTRODUCTION

COMMUNITY ENGAGEMENT CENTER

CREATIVE ENGAGEMENT CENTER

OUTDOOR ENGAGEMENT CENTER

LEADERSHIP ENGAGEMENT CENTER

GLOBAL ENGAGEMENT CENTER

SCHOOL OF BUSINESS

COLLEGE OF EDUCATION & HUMAN  
DEVELOPMENT

COLLEGE OF HUMANITIES &  
SOCIAL SCIENCES

COLLEGE OF PERFORMING &  
VISUAL ARTS

COLLEGE OF SCIENCE & ENGINEERING

SCHOOL OF CONTINUING AND  
PROFESSIONAL STUDIES

UNIVERSITY COLLEGE

HONORS PROGRAM

LIBRARY

UGRASP

STUDENT SERVICES

FACULTY SCHOLARLY SUPPORT  
FUND GRANTS

The conference has a long tradition, dating back many decades. The gathering is informal, and presentations include everything from publishable articles and formal papers to discussion-oriented abstracts. This year the conference had 49 papers presented by 48 registered participants from 18 geographically diverse states, including Washington, Massachusetts, South Dakota, Iowa, Texas, Nebraska and Idaho. The luncheon speaker was R. Scott Phillips of the Utah Shakespeare Festival, and the keynote was Eric Leavitt, President of the Leavitt Group and Chair of the SUU Board of Trustees. All of the feedback Dr. Hamlin received about the conference was very positive, including many comments about the quality of the facilities and the high level of presentations.

## Economics & Finance

### Publications and Presentations

**Dr. David J. Berri** and Martin Schmidt's essay, "On the Evaluation of Kickers in the National Football League" has been accepted by the International Journal of Sport Finance for publication.

**Dr. David J. Berri** and Anthony Krautman published "Understanding the WNBA On and Off the Court" in Handbook on the Economics of Women in Sports, edited by Eva Marikova Leeds and Michael Leeds. Edward Elgar Press. pp. 132-155.

**Dr. David J. Berri** published "One More Reason to Pay College Athletes: If players were paid, market forces would work against competitive imbalance" at Time.com (August 17, 2013).

**Dr. David J. Berri**, Rob Simmons, Lee Panas, and Jennifer Van Gilder presented "Does Defense Get You Paid in Baseball?" at the Western Economic Association, Seattle, Washington: June, 2013.

**Dr. David J. Berri**, Robert Brown, Dan Rascher, Andy Martinelli, and Arturo Galleti presented "Exploitation and College Basketball" at the Western Economic Association; Seattle, Washington, June, 2013.

**Dr. Steven Evans** published "A Comparison of the Greek and American Financial Crises: Another Perspective" in The Journal of Economics and Economic Education Research. 14.2 (2012):32.

**Dr. David Tufte**, **Dr. Kyle Bishop** (English), and **Professor Mary Jo Tufte** (Biology) collaborated on "What Happens Next? What Economics Reveals about the Endgame of a Zombie Apocalypse," which is forthcoming in The Economics of the Undead, eds. Craig Whitman and James P. Dow. Published by Rowman and Littlefield.

### Awards

**Dr. David J. Berri** was awarded a Board of Trustees Award (for Outstanding Scholar), Southern Utah University, 2013, for his journal and book publications in the area of Sports Economics.



SPRING 2014 • VOLUME 3 • ISSUE 1

INTRODUCTION

COMMUNITY ENGAGEMENT CENTER

CREATIVE ENGAGEMENT CENTER

OUTDOOR ENGAGEMENT CENTER

LEADERSHIP ENGAGEMENT CENTER

GLOBAL ENGAGEMENT CENTER

SCHOOL OF BUSINESS

COLLEGE OF EDUCATION & HUMAN  
DEVELOPMENT

COLLEGE OF HUMANITIES &  
SOCIAL SCIENCES

COLLEGE OF PERFORMING &  
VISUAL ARTS

COLLEGE OF SCIENCE & ENGINEERING

SCHOOL OF CONTINUING AND  
PROFESSIONAL STUDIES

UNIVERSITY COLLEGE

HONORS PROGRAM

LIBRARY

UGRASP

STUDENT SERVICES

FACULTY SCHOLARLY SUPPORT  
FUND GRANTS

## Management, Marketing and Hospitality

### Publications and Presentations

**Dr. Azmi Ahmad** published "Determinants of Service Quality in Higher Education: Underlying Structure of Students and Teachers' Perceptions" in the European Journal of Management in 2013.

**Dr. Azmi Ahmad** presented "Determinants of Service Quality in Higher Education" at the IABE Winter Conference in March of 2013.

**Dr. Azmi Ahmad** presented "Dimensions of Service Quality in Higher Education: Underlying Structure of Students and Faculty Perception" at the March 2012 MAA Regional Meeting.

**Dr. Lisa Assante**, with Sophitmanee Sukalakamala, Hsing Ivan Wen, and Dorothy A. Knudson published "Identifying Optimal Communication Mix for Strategic Destination Image Formation: A Case Study of Austria" in the Journal of Management and Marketing Research

**Dr. Lisa Assante** presented "Transformative Peer Group Projects through Artifact and Visual Media" at the Utah Campus Compact 2013 Moab Faculty Retreat.

**Dr. Gerald E. Calvasina**, with R. V. Calvasina and E. J. Calvasina published "'Smokin' in the Boys (Girls) Room' – Regulating Employee Lifestyle: Legal, Policy, And Employee relations Issues for Employers." Journal of Business and Behavioral Sciences, 25.1 (Spring 2013): 107 – 119.

**Dr. Gerald E. Calvasina**, with R. V. Calvasina and E. J. Calvasina published "Protected Concerted Activity Under The National Labor Relations Act And Employer Use of Social Media" in Business Studies Journal 5.2 (2013): 59 – 67.

**Dr. Gerald E. Calvasina**, with R. V. Calvasina and E. J. Calvasina published "Recent National Labor Relations Board (NLRB) Decisions and Non-union Employers" in the proceedings for the American Society of Business and Behavioral Sciences Conference, February 2013.

**Dr. Alan Hamlin** and Dr. Greg Powell published "A Comparison of University Efforts to Contain Academic Dishonesty" in the Journal of Legal, Ethical and Regulatory Issues in January of 2013.

**Dr. Alan Hamlin** and James Frost presented "Perceptions of International Students about Academic Dishonesty: How Cultural Differences Impact Effective Teaching and Business Abroad" at the First Annual Southern Utah University Leadership Conference, Cedar City, Utah, February 28, 2013. The paper was published in conference proceedings.

**Dr. Alan Hamlin** and James Frost presented "University Student Perceptions About Technology-Driven Privacy Issues" at the 55th Annual Mountain Plains Management Conference, Cedar City, Utah, October 17, 2013.

**Dr. Roy Johnson** published "Cable TV, Public Education, AZT, and A Shared Pond: Three Case Incidents in Government, Business and Ethics" in the Journal of Business Case Studies in the summer of 2013.

**Dr. Roy Johnson** presented "Ethical Leadership at the Top" at the SUU Leadership Conference in 2013.

**Dr. Amy Moore** presented "Health Interventions for Native Americans: Results from a Priming Experiment" and "Lessons from an Experimental Approach to Native American Health Care" at the Northeast Native Health Network Conference at Northeastern University in Boston, MA, April 2013.

**Dean Carl Templin** served as a member of a peer review team for a Maintenance of Accreditation visit this year. He also attended the AACSB-International International Conference and Annual Meeting of the April 7-9 in Chicago, Illinois where he received updated information on changes to AACSB accreditation standards which will be in place for the School's next Maintenance of Accreditation visit in 2015-2016.

Dean: Deb Hill

Website: <http://suu.edu/ed/>



Emma Eccles Jones Education Building  
West Entrance

# BEVERLEY TAYLOR SORENSON COLLEGE OF EDUCATION & HUMAN DEVELOPMENT

## Teacher Education & Family Development

### Publications and Presentations

**Dr. Bruce O. Barker** presented "The Future of Online Instruction in Traditional Higher Education" at the Lilly International Conference on College and University Teaching, Washington D. C., May 2013. This presentation highlighted the role of online teaching in the delivery of graduate education programs.

**Dr. Shawn Christiansen** published, "A Nation without Children: A Discussion of Fertility Decline in Japan," in NCFR Report, Family Focus on Global Families (2013): F18-F20.

**Dr. Shawn Christiansen** and **Professor Matthew Schmidt** (Nutrition) published "Using Study Abroad as a Context for Teaching Family and Consumer Sciences," NCFR Report, Family Focus on Global Families (2013).

**Dr. Shawn Christiansen** and Professor Matthew Schmidt (Nutrition) presented "Using Study Abroad and Experiential Education to Learn about Japanese Family Life, Culture, and Nutrition" at the 5th Annual SoTe Conference: Engage learning: Bridging the gap. March 29, 2013, Utah Valley University.

**Dr. Shawn Christiansen** presented "Using Feminist-Informed Systems Theory in Understanding and Treating Family Violence" at the 2nd Annual SUU Women and Gender Studies Conference: Men, Women, and Violence, March 28, 2013, Cedar City, UT.

### College Highlights

**Dr. Deb Hill** (Dean of the College of Education and Human Development) recently returned from a Fulbright Specialist grant, where she spent six weeks studying and teaching at the University of Applied Science in Oulu, Finland. (For more details, see the print version of Summit).



SPRING 2014 • VOLUME 3 • ISSUE 1

INTRODUCTION

COMMUNITY ENGAGEMENT CENTER

CREATIVE ENGAGEMENT CENTER

OUTDOOR ENGAGEMENT CENTER

LEADERSHIP ENGAGEMENT CENTER

GLOBAL ENGAGEMENT CENTER

SCHOOL OF BUSINESS

COLLEGE OF EDUCATION & HUMAN  
DEVELOPMENT

COLLEGE OF HUMANITIES &  
SOCIAL SCIENCES

COLLEGE OF PERFORMING &  
VISUAL ARTS

COLLEGE OF SCIENCE & ENGINEERING

SCHOOL OF CONTINUING AND  
PROFESSIONAL STUDIES

UNIVERSITY COLLEGE

HONORS PROGRAM

LIBRARY

UGRASP

STUDENT SERVICES

FACULTY SCHOLARLY SUPPORT  
FUND GRANTS



SPRING 2014 • VOLUME 3 • ISSUE 1

INTRODUCTION  
 COMMUNITY ENGAGEMENT CENTER  
 CREATIVE ENGAGEMENT CENTER  
 OUTDOOR ENGAGEMENT CENTER  
 LEADERSHIP ENGAGEMENT CENTER  
 GLOBAL ENGAGEMENT CENTER  
 SCHOOL OF BUSINESS  
 COLLEGE OF EDUCATION & HUMAN DEVELOPMENT  
 COLLEGE OF HUMANITIES & SOCIAL SCIENCES  
 COLLEGE OF PERFORMING & VISUAL ARTS  
 COLLEGE OF SCIENCE & ENGINEERING  
 SCHOOL OF CONTINUING AND PROFESSIONAL STUDIES  
 UNIVERSITY COLLEGE  
 HONORS PROGRAM  
 LIBRARY  
 UGRASP  
 STUDENT SERVICES  
 FACULTY SCHOLARLY SUPPORT  
 FUND GRANTS



**A statue outside City Hall, Oulu Finland.  
 Photo taken by Deb Hill.**

**Professor Rea Gubler** and **Professor Artis Grady** presented “Call to Action! Childhood Obesity is Everyone’s Problem” during a webinar for the American Association of Family and Consumer Sciences, April 2013. The professors presented a similar topic at SUU’s Family and Consumer Sciences annual inservice training workshop in April 2013.

**Professor Rea Gubler** and **Professor Artis Grady** presented “Bread: A Common Cultural Thread for All Ages” at the Hawaii University International Conference of Arts, Humanities, and Social Sciences, January 2013.

**Professor Karen Houser** presented “Full ‘STEAM’ ahead: An Early Childhood Experience with STEM (Plus Art)” at the Hawaii International Conference on Education, 2013.

**Dr. Michiko Kobayashi**, along with K. Kusano, S. Frederiksen, L. Jones, Y. Mukoyama, T. Yamagishi, and H. Ishizuka published “The Effects of ICT Environment on Teachers’ Attitudes and Technology Integration in Japan and the U.S.” in *Journal of Information Technology Education: Innovations in Practice*, 12 (2013): 29-43.

**Dr. Michiko Kobayashi’s** article, “Supporting Academic Success of International Students in Online Learning: Difficulties in Transition to U.S. Universities,” in *Online Classroom*, is currently in press.

**Dr. Michiko Kobayashi** presented “Using Web 2.0 in Online Learning: What Students Said About VoiceThread” at the Association for the Advancement of Computing in Education, World Conference on Educational Media and Technology, Victoria, BC, Canada, 2013.

**Dr. Michiko Kobayashi** presented “Think Globally, Go Beyond Campus: Developing Cultural Consciousness Through Online Collaboration” at the Society of Information Technology and Teacher Education Conference, New Orleans, LA, March 2013.

**Dr. James McCoy** presented “Essential Questions for Deeper Learning” at the Utah Academy of Sciences, Arts, and Letters, Utah Valley University, April 2013.

**Professor Carrie Trenholm** presented “Beverley Taylor Sorenson Arts Specialists Sharing Best Visual Arts Lesson Plans” at the Utah Art Education Association meeting, St. George, UT, February 23, 2013.

**Professor Carrie Trenholm** presented “You’ve Got Mail: Collage Art Postcards” at the Mountain West Arts Conference, West Valley City, UT, May 2, 2013.

**Dr. Nichole Wangsgard** published “The Secret to Teaching the Trouble Maker” in *The Utah Special Educator*, March 2013. This publication will help general education teachers and special education teachers to meet the demands of students who misbehave in the classroom.



SPRING 2014 • VOLUME 3 • ISSUE 1

INTRODUCTION

COMMUNITY ENGAGEMENT CENTER

CREATIVE ENGAGEMENT CENTER

OUTDOOR ENGAGEMENT CENTER

LEADERSHIP ENGAGEMENT CENTER

GLOBAL ENGAGEMENT CENTER

SCHOOL OF BUSINESS

COLLEGE OF EDUCATION & HUMAN  
DEVELOPMENT

COLLEGE OF HUMANITIES &  
SOCIAL SCIENCES

COLLEGE OF PERFORMING &  
VISUAL ARTS

COLLEGE OF SCIENCE & ENGINEERING

SCHOOL OF CONTINUING AND  
PROFESSIONAL STUDIES

UNIVERSITY COLLEGE

HONORS PROGRAM

LIBRARY

UGRASP

STUDENT SERVICES

FACULTY SCHOLARLY SUPPORT  
FUND GRANTS

**Dr. Nichole Wangsgard** presented: "Valuable Tips for Helping Student with Emotional and Behavioral Disorders Succeed in the Classroom" at the 31st National Conference on the Training and Employment of Para-educators, Salt Lake City, UT, April 2013. This presentation helps para-educators who work in general and special education classrooms meet the needs of students with E/BD. Practical strategies and interventions were outlined during a 90 minutes presentation.

**Dr. Nichole Wangsgard** published two chapters in *The ABC's of Classroom Management*, which appeared September 12, 2013. Dr. Wangsgard worked closely with the editors of Kappa Delta Pi to help them create a wonderful user friendly book to help teachers manage their classroom. The chapters she wrote, as well as the chapter written by other experts, will help teachers have the tools to reach all students more effectively.

### Awards

**Dr. Prent Klag, Dr. Shawn Christiansen, Professor Rea Gubler, Dr. Carmel White, Professor Karen Houser, and Dr. Deb Hill** were awarded \$60,000 from the Emma Eccles Jones Foundation for the SUU Early Childhood Enhancement Education Project.

**Professor Carrie Trenholm** received a \$1,000,000 Endowment for the ArtsFUSION program from the Sorenson Legacy Foundation.

**Professor Peggy Wittwer** has been named a 2013 Service Learning Fellow.

### Projects

**Professor Peggy Wittwer** and **Dr. Brian Ludlow** have been integral to establishing North Elementary School as a STEAM school, through a partnership between SUU and Iron County School District. Through the partnership, Professors and students from SUU work with local schools to provide better STEAM learning opportunities; SUU supplies resources to supplement educational practices; Pre-service Block students are provided with service learning opportunities by taking over classes so in-service teachers can participate in professional development courses with SUU faculty members. Professor Wittwer and Dr. Ludlow have been particularly involved with the Project Learning Tree, Block Practicum, and STEM activities, where they run faculty development activities, supervise pre-service teachers, Teach Polar Expeditions, do training for the STEM Emphasis, serve as members of the ICSD-SUU partnership Committee, and are on the STEAMROLLERS committee. Other SUU faculty involved with the STEM program include **Professor Karen Houser** (Director of the SUU preschool and member of partnership committee), **Dr. Prent Klag, Dr. John Taylor** (Biology), **Professor Carrie Trenholm** (Art Education), **Dr. Deb Hill** (Dean, College of Education), and **Shalini Kesar** (CSIS).

**Dr. Brian Ludlow** and **Professor Peggy Wittwer** run the Project Learning Tree Certification at the Southern Utah University Cabin. They take seniors in the Elementary Education Block on an overnight activity to provide them with an experiential learning activity the leads to a national certification with Project Learning Tree and Project Wild. The students are also involved in various team building activities, student presentations, and integrated inquiry-based learning opportunities. They read and discuss Aldo Leopold's "The Land Ethic" and discuss its implications in small and large groups as they consider issues related to the environment.

**Dr. Thomas H. Cunningham** organized and coordinated the 2013 Red Rock Great Teaching Retreat, Kanab, UT, February 28-March 2, 2013, attended by faculty from Southern Utah University, Weber State University, Utah State University, and Snow College.





SPRING 2014 • VOLUME 3 • ISSUE 1

INTRODUCTION

COMMUNITY ENGAGEMENT CENTER

CREATIVE ENGAGEMENT CENTER

OUTDOOR ENGAGEMENT CENTER

LEADERSHIP ENGAGEMENT CENTER

GLOBAL ENGAGEMENT CENTER

SCHOOL OF BUSINESS

COLLEGE OF EDUCATION & HUMAN DEVELOPMENT

COLLEGE OF HUMANITIES & SOCIAL SCIENCES

COLLEGE OF PERFORMING & VISUAL ARTS

COLLEGE OF SCIENCE & ENGINEERING

SCHOOL OF CONTINUING AND PROFESSIONAL STUDIES

UNIVERSITY COLLEGE

HONORS PROGRAM

LIBRARY

UGRASP

STUDENT SERVICES

FACULTY SCHOLARLY SUPPORT FUND GRANTS

## Physical Education & Human Performance

### Publications and Presentations

**Dr. Mark DeBeliso**, J.W. McChesney, D.D. Fichtner, and L. E. Murdock published "Grip Norms and Reliability of the Hand Grip ForceMap System" in the Journal of Hand Surgery (Euro Vo), published online 27 May, 2013.

**Dr. Mark DeBeliso**, T.G. Sevene, K.J. Adams, et al. published "The Effects of a Back-Belt on Lumbar Disc Deformation during Stoop Type Lifting" in the International Journal of Science and Engineering Investigations, 2.16 (2013): 1-10.

**Dr. Mark DeBeliso**, J. Walsh, M. Climstein, et al. published "Masters Athletes: No Evidence of Increased Incidence of Injury in Football Code Athletes" in Advances in Physical Education, 3.1 (2013): 36-42.

**Dr. Mark DeBeliso**, J. Walsh, M. Climstein, et al. published "Body Mass Index for Athletes Participating in Swimming at the World Masters Games" in the Journal of Sports Medicine and Physical Fitness, 53 (2013): 162-168.

**Dr. Mark DeBeliso**, T.G. Sevene, C. Harris, et al. published "Metabolic Response to Repetitive Lifting Tasks: Predetermined vs. Self-Selected Pace" in the International Journal of Science and Engineering Investigations, 2.16 (2013): 68-71.

**Dr. Camille Thomas** presented "Emotional Intelligence: A Means to Improve Your Coaching" at the AAHPERD National Conference in Charlotte, NC, 2013.

### Awards

**Dr. Mark DeBeliso's** paper, "The Effects of a Back-Belt on Lumbar Disk Deformation during Stoop Type Lifting" won the best paper award from the International Journal of Science and Engineering Investigations.

## Graduate Studies in Education

### Publications and Presentations

**Dr. Katy Herbold** presented at the Scholarship of Teaching and Engagement (SoTE) Conference with members of the Education Designed to Give Experience (EDGE) team on March 29 at Utah Valley University. The team presented on SUU's unique approach to experiential education.



**Professor Julie Taylor working with Physical Education student Tagert Smith**



SPRING 2014 • VOLUME 3 • ISSUE 1

INTRODUCTION

COMMUNITY ENGAGEMENT CENTER

CREATIVE ENGAGEMENT CENTER

OUTDOOR ENGAGEMENT CENTER

LEADERSHIP ENGAGEMENT CENTER

GLOBAL ENGAGEMENT CENTER

SCHOOL OF BUSINESS

COLLEGE OF EDUCATION & HUMAN  
DEVELOPMENT

COLLEGE OF HUMANITIES &  
SOCIAL SCIENCES

COLLEGE OF PERFORMING &  
VISUAL ARTS

COLLEGE OF SCIENCE & ENGINEERING

SCHOOL OF CONTINUING AND  
PROFESSIONAL STUDIES

UNIVERSITY COLLEGE

HONORS PROGRAM

LIBRARY

UGRASP

STUDENT SERVICES

FACULTY SCHOLARLY SUPPORT  
FUND GRANTS

**Dr. Katy Herbold** presented "To the Flipped Classroom and Beyond!" at the Association for the Advancement of Computing in Education, World Conference on Educational Media and Technology, Victoria, BC, Canada, 2013.

**Dr. Prent Klag** presented "Engaging the Elementary School Community in Innovative and Meaningful STEM Activities" at the National Science Teachers Association's Annual Conference, San Antonio, TX, April 12, 2013.

**Dr. Brian Ludlow** (Teacher Education) and Dr. Tony Pellegrini presented "It's All About the Instruction, Baby!" at the SUU Leadership Conference, February 28-March 1, 2013.

**Dr. Brian Ludlow** and **Professor Wittwer** presented "Making STEM 'STEAMY': A Successful Higher Education and K-6 Education Partnership," at the 11th Annual Hawaii International Conference on Education, January 2013.

**Dr. Brian Ludlow** presented "Worst to First: Overcoming the Achievement Gap by Addressing Core Instruction and Providing Strong Leadership: One School's 'Cinderella Story!'" at the Lead, Share, Build Leadership Conference, Southern Utah University, February 2013.

**Dr. Kimberly Mendenhall**, with B. O'Keefe, R.E. O'Neill, and L. Hawken presented "Adapting Core Curriculum to Enable Practical Tier 2 Interventions" at the UMTSS Conference, Salt Lake City, 2013. They presented a similar poster at the Association for Behavior Analysis International, Minneapolis, MN, 2013.

**Dr. Kimberly Mendenhall**, with N. Suchey, B.V. O'Keefe, and R.E. O'Neill published "Adapting a School's Reading Curriculum Materials as a Tier II Intervention," in *The Utah Special Educator* 35.3 (2013): 118-121.

**Dr. Lee Montgomery** and A.W. Rhoades presented "Character Education in a Utah Elementary STEAM School" at the Oxford Roundtable on Education, Oxford, England, March 10, 2013.

**Dr. Tony Pellegrini** and **Dr. Bart Reynolds** presented "Student Teacher Perceptions of University Supervisor Support" at the 5th Annual Scholarship of Teaching and Engagement Conference, Utah Valley University, Orem, UT, March 2013. They presented a variation of the same topic at the Utah Rural Schools Conference at SUU, in July 2013.

**Dr. Tony Pellegrini** presented "Social Networking in Undergraduate Programs" at the Utah Rural Schools Conference, SUU, Cedar City, UT, July 2013.

**Dr. Tony Pellegrini** presented "Social Networking in Undergraduate Programs" at the Teaching and Learning Symposium, Weber State University, Ogden, UT, April 2013.

**Dr. Tony Pellegrini** presented "Social Media Tools Being Used in Education" at the 4th Annual Excellence in Technology Conference, SUU, May 2013.

**Dr. Bart Reynolds** presented "Experiential Learning Model Applied to Administrative Interns" at the Utah Valley University 28th Annual Expanding Your Horizons conference, 2013.

Dean: James McDonald

Website: <http://suu.edu/hss/>



Centrum Arena North Entrance

### HSS Highlights

The College of HSS is pioneering a new writing-across-the curriculum program Fall semester. The **Writing Fellows** program, modelled after similar programs at universities like Brown and Brigham Young University, helps support writing in a variety of disciplines by assigning student tutors to work individually with students in writing-intensive courses. The initial program has four student tutors assigned to work with three writing courses taught by **Dr. Johnny MacLean** (Biology), **Dr. Camille Thomas** (Physical Education and Human Performance) and **Dr. Grant Corser** (Psychology). The program is overseen by **Dr. Julia Combs** (English) and **Dr. Rosalyn Eves** (English).

# COLLEGE OF HUMANITIES & SOCIAL SCIENCES

## Communication

### Publications and Presentations

**Dr. Jee-Young Chung** has an article, "Text Me When It Becomes Dangerous: Exploring the Determinants of College Students' Adoption of Mobile-based Text Alerts Short Message Service," in *Computer in Human Behavior*.

**Dr. Jee-Young Chung** presented "Facebook Tips from Experts?: An Empirical Analysis of Leading U.S. PR Firms' Facebook Pages" at the Korean Academic Society for Public Relations Biannual Conference, Sejong City, Korea.

**Dr. Lindsey A. Harvell**, with Norman C. H. Wong (U of Oklahoma) and Necati Anaz (Necmettin Erbakan University) published "Comparing Two Modes of Presentation on Perceptions of Flu Threat and Attributions for its Global Outbreak" in the *European Journal of Geography* 4. 2 (2013): 17-33. This project emphasized how the presentation of information (such as an outbreak of the H1N1 flu) can affect how individuals process the message and subsequent behavior. This interdisciplinary research is important to the fields of communication and geography.

**Dr. Lindsey A. Harvell**, with Gwendelyn S. Nisbett (University of North Texas) and Glenn J. Hansen (University of Oklahoma) published "Analyzing Journalistic Approaches of Supreme Court Hearings: A Longitudinal Study" in the *Iowa Journal of Communication* (currently in press). This project emphasized how news organizations cover Supreme Court nominee hearings and how this affects the processing of the information. This interdisciplinary research is important in the fields of communication, journalism, and political science.

**Dr. Lindsey A. Harvell**, with Gwendelyn S. Nisbett (University of North Texas), Norman C.H. Wong (University of Oklahoma), and Yanavey McCloskey (Southern Utah University) presented "Apocalyptic Doom: How Religion and Mortality Salience Affect Fears of the 2012 Mayan Prophecy" at the Central States Communication Association, Kansas City, MO, April 2013. This paper further investigates the idea of social death salience as it relates to traditional death salience and how they interact with religion and fears of the 2012 Mayan prophecy. This groundbreaking research continues to extend Terror Management Theory.

SUU  
SUMMIT

ONLINE

SPRING 2014 • VOLUME 3 • ISSUE 1

INTRODUCTION

COMMUNITY ENGAGEMENT CENTER

CREATIVE ENGAGEMENT CENTER

OUTDOOR ENGAGEMENT CENTER

LEADERSHIP ENGAGEMENT CENTER

GLOBAL ENGAGEMENT CENTER

SCHOOL OF BUSINESS

COLLEGE OF EDUCATION & HUMAN  
DEVELOPMENT

COLLEGE OF HUMANITIES &  
SOCIAL SCIENCES

COLLEGE OF PERFORMING &  
VISUAL ARTS

COLLEGE OF SCIENCE & ENGINEERING

SCHOOL OF CONTINUING AND  
PROFESSIONAL STUDIES

UNIVERSITY COLLEGE

HONORS PROGRAM

LIBRARY

UGRASP

STUDENT SERVICES

FACULTY SCHOLARLY SUPPORT  
FUND GRANTS



SPRING 2014 • VOLUME 3 • ISSUE 1

INTRODUCTION

COMMUNITY ENGAGEMENT CENTER

CREATIVE ENGAGEMENT CENTER

OUTDOOR ENGAGEMENT CENTER

LEADERSHIP ENGAGEMENT CENTER

GLOBAL ENGAGEMENT CENTER

SCHOOL OF BUSINESS

COLLEGE OF EDUCATION & HUMAN  
DEVELOPMENT

COLLEGE OF HUMANITIES &  
SOCIAL SCIENCES

COLLEGE OF PERFORMING &  
VISUAL ARTS

COLLEGE OF SCIENCE & ENGINEERING

SCHOOL OF CONTINUING AND  
PROFESSIONAL STUDIES

UNIVERSITY COLLEGE

HONORS PROGRAM

LIBRARY

UGRASP

STUDENT SERVICES

FACULTY SCHOLARLY SUPPORT  
FUND GRANTS

**Dr. Lindsey A. Harvell** and Gwendelyn S. Nisbett (U of North Texas) presented “Death and Taxes: How We Use Religion to Navigate Political Decisions” at the Association for Education in Journalism & Mass Communication Mid-Winter, Norman, Oklahoma, March 2013. This paper further investigates the idea of social death salience as it relates to traditional death salience and how they interact with religion and political decisions. This groundbreaking research continues to extend Terror Management Theory. This interdisciplinary research is directly relevant to the fields of psychology, political science, and communication.

**Sage Platt** (director, Speech and Presentation Center), along with a group of students, presented on “Leadership in Group Facilitation” at the SUU Leadership Conference, February 28-March 1, 2013.

**Dr. Kevin Smith, Dr. Matt Barton** and Paul Turman published “In the Dark at Texas Tech: News Coverage Involving the Image Repair Discourse of Mike Leach and Adam James” in the edited volume *Repairing the Athlete’s Image: Studies in Sports Image Restoration*, 2013 (Eds J. R. Blaney, L. R. Lippert, & J. S. Smith). At the height of the 2009 College Bowl Season, Texas Tech University shocked the sports world when it announced that head coach Mike Leach would be fired costing him \$800,000 dollars in bonus pay. The announcement came amidst allegations that Leach had abused sophomore wide receiver Adam James (son of ESPN analyst and former SMU standout Craig James) by confining him to a dark electrical closet at the team’s workout facility. This work advanced our understanding of newspaper coverage of the apologetic situation by examining discourse offered in response to specific apologies (antapologia). It further extended our understanding of antapologia in the Mike Leach controversy and develops a theoretical framework for how news organizations cover sports apologies.

### Awards

**Dr. Lindsey A. Harvell** received the Top Faculty Paper Award from the Central States Communication Association, Kansas City, MO, 2013.

## English

### Publications and Presentations

**Dr. James Aton** published *Jim Jones: The San Blas Years*, Cedar City: Southern Utah UP, 2013. This is the catalog for the show of the same name, “Jim Jones: the San Blas Years,” at the Braithwaite Gallery which opened in September. Dr. Aton also curated the show.





SPRING 2014 • VOLUME 3 • ISSUE 1

INTRODUCTION

COMMUNITY ENGAGEMENT CENTER

CREATIVE ENGAGEMENT CENTER

OUTDOOR ENGAGEMENT CENTER

LEADERSHIP ENGAGEMENT CENTER

GLOBAL ENGAGEMENT CENTER

SCHOOL OF BUSINESS

COLLEGE OF EDUCATION & HUMAN  
DEVELOPMENT

COLLEGE OF HUMANITIES &  
SOCIAL SCIENCES

COLLEGE OF PERFORMING &  
VISUAL ARTS

COLLEGE OF SCIENCE & ENGINEERING

SCHOOL OF CONTINUING AND  
PROFESSIONAL STUDIES

UNIVERSITY COLLEGE

HONORS PROGRAM

LIBRARY

UGRASP

STUDENT SERVICES

FACULTY SCHOLARLY SUPPORT  
FUND GRANTS

**Dr. Kyle Bishop** published "Battling Monsters and Becoming Monstrous: Human Devolution in *The Walking Dead*" in *Monster Culture in the 21st Century: A Reader* edited by Marina Levina and Diem-My T. Bui. London: Bloomsbury, 2013: 73-85. Dr. Bishop was asked to contribute a chapter for a reader on 21st century monsters. He wrote an analysis of *The Walking Dead* and how the characters in it can only survive the post-apocalyptic landscape by becoming monstrous themselves. In other words, modern monster narratives such as this one continue to act as morality tales, warning us to hold on to our humanity even when faced with the most desperate of odds. As the television series is extremely popular right now, my contributions represent an important beginning to the scholarly discourse surrounding the text.

**Dr. Bryce Christensen's** poetry collection, *'The Portals of Sheol' and Other Poems*, published in 2012 and received national attention this past summer through a positive review in American Library Association's *Booklist*: <http://www.booklistonline.com/The-Portals-of-Sheol-and-Other-Poems-Bryce-Christensen/pid=6244050> One of the poems in this collection (namely, "English 101") was nominated for a Pushcart Prize.

**Dr. Bryce Christensen** published "A God or a Biological By-Product? Rethinking the Imaginative Place of Man in the Post-Copernican Cosmos" in *The Human: Journal of Literature and Culture* 1 (2013): 77-86.

**Dr. Bryce Christensen** published a sonnet, "Collections" in *Trinacria* 9 (2013): 69. The poem was nominated for a 2014 Pushcart Prize.

**Dr. Bryce Christensen** presented "'White Clouds that Never End': The Poetry of Wang Wei as Buddhist Koan" at the joint annual convention of the Popular Culture Association Conference and the American Culture Association, Washington Marriot Wardman Park, 28 March 2013.

**Dr. Julia Combs** presented "There's No Place Like Home: Constructing Ethos in Dorothy Leigh's Seventeenth-Century Conduct Manual" at the *Fourth Global Conference of Place and Space: Exploring Critical Issues* at Mansfield College, Oxford, England, September, 2013. This paper has also been accepted for publication in the February issue of the *Ben Johnson Journal*. In this presentation and paper, Dr. Combs argue that from within the supposed confinement of the domestic sphere, Dorothy Leigh specifically, actively, and successfully engages political policies, social issues, and religious debates as if she were, as she describes herself, "a man and a preacher." *The Mother's Blessing* is a rich and compelling example of rhetoric that transcended barriers of gender and genre to become one of the most popular conduct books of the early seventeenth century.

**Dr. Julie Simon** won first place from the Utah Arts Council original writing competition, for her novel *The Ghost Town Preservation Society*.

## Foreign Language & Philosophy

### Publications and Presentations

**Dr. Rachel Kirk** published "The Effects of Processing Instruction with and without Output" in *Hispania*, March 2013. This article detailed the first study to test the results of Processing Instruction (PI) alone and PI used in conjunction with Output (production practice). The results indicated that output practice did not affect students' acquisition of specific grammatical structures when compared to the results of PI alone. However, if students devoted more time to production than to the structured input activities of PI, their results were significantly lower. In other words, for higher levels of acquisition of a foreign language, students should devote more time to input (listening or reading) than to production (speaking or writing).



SPRING 2014 • VOLUME 3 • ISSUE 1

INTRODUCTION

COMMUNITY ENGAGEMENT CENTER

CREATIVE ENGAGEMENT CENTER

OUTDOOR ENGAGEMENT CENTER

LEADERSHIP ENGAGEMENT CENTER

GLOBAL ENGAGEMENT CENTER

SCHOOL OF BUSINESS

COLLEGE OF EDUCATION & HUMAN  
DEVELOPMENT

COLLEGE OF HUMANITIES &  
SOCIAL SCIENCES

COLLEGE OF PERFORMING &  
VISUAL ARTS

COLLEGE OF SCIENCE & ENGINEERING

SCHOOL OF CONTINUING AND  
PROFESSIONAL STUDIES

UNIVERSITY COLLEGE

HONORS PROGRAM

LIBRARY

UGRASP

STUDENT SERVICES

FACULTY SCHOLARLY SUPPORT  
FUND GRANTS

## History , Sociology , Anthropology

### Publications and Presentations

**Dr. Kholoud Al-Qubbaj** edited the collection *Dimensions of Global Diversity*, forthcoming from Cognella Academic Publishing.

**Dr. Shobha Hamal Gurung** and **Dr. Danielle Dubrasky** (English) presented “Interdisciplinary Leadership through Women and Gender Studies” at the SUU Leadership Conference, February 28-March 1, 2013. Their presentation discussed how the interdisciplinary approach to the Women and Gender Studies minor provides students with a broad foundation for later professional careers.

**Dr. Shobha Hamal Gurung** presented “Nepali Migrant Women, their Husbands, and their Transnational Lives: Power and Paradoxes” at the American Sociological Association, New York, August 2013.

**Dr. Shobha Hamal Gurung** was an invited guest lecturer at Padma Kanya Multiple College-Tribhuvan University, Kathmandu, Nepal, June 2013.

**Dr. Shobha Hamal Gurung** presented “Teaching Service Learning Courses: Possibilities and Challenges” at the Sociologists for Women in Society conference, New Mexico, February 2013.

**Dr. Shobha Hamal Gurung** published “Shifting Gender Roles and Shifting Power Relations: Immigrant/Migrant Nepali Families in New York and Los Angeles” in *Living Diaspora—Family, Education and Identity*, edited by Georgina Tsolidis’ London: Springer Publishing Company.

**Dr. Shobha Hamal Gurung** and Bandana Purkayastha published “Gendered Labor: Experiences of Nepali Women Within Pan-Ethnic informal Labor Markets in Boston and New York” in *Immigrant Women Workers in the Neoliberal Age*, edited by Nilda Flores-Gonzalez et al. Chicago: University of Illinois Press, 2013.

**Dr. James McDonald** (Dean of HSS), John Hawkins, and Walter Randolph Adams edited the new book, *Crisis of Governance in Maya Guatemala: Indigenous Responses to a Failing State*. The book was released April 19, 2013, by the University of Oklahoma Press.

**Dr. Mark Miller** published *Claiming Cherokee: The Five Tribes and the Politics of Indian Identity*, Norman: U of Oklahoma P, 2013. This is the first book that focuses on the Five “Civilized” Tribes and their battle to enforce strict standards for recognizing indigenous people and Indian tribes in modern America. It details the Cherokee Nation and other tribes’ efforts to protect tribal sovereignty, indigenous identity, and Native American resources in the United States today.



SUU Anthropology students with petroglyphs in field school



SPRING 2014 • VOLUME 3 • ISSUE 1

INTRODUCTION

COMMUNITY ENGAGEMENT CENTER

CREATIVE ENGAGEMENT CENTER

OUTDOOR ENGAGEMENT CENTER

LEADERSHIP ENGAGEMENT CENTER

GLOBAL ENGAGEMENT CENTER

SCHOOL OF BUSINESS

COLLEGE OF EDUCATION & HUMAN  
DEVELOPMENT

COLLEGE OF HUMANITIES &  
SOCIAL SCIENCES

COLLEGE OF PERFORMING &  
VISUAL ARTS

COLLEGE OF SCIENCE & ENGINEERING

SCHOOL OF CONTINUING AND  
PROFESSIONAL STUDIES

UNIVERSITY COLLEGE

HONORS PROGRAM

LIBRARY

UGRASP

STUDENT SERVICES

FACULTY SCHOLARLY SUPPORT  
FUND GRANTS

**Dr. Earl Mulderink** participated in the National Endowment for the Humanities Summer Institute at the Georgia Historical Society in Savannah, Georgia, in June 2013. He was one of 23 scholars selected for a two-week seminar that explored Georgia's history with a focus on black Americans and slavery. Dr. Mulderink's project was titled "African-American History and Experience in Georgia's Lowcountry."

**Dr. Earl Mulderink** gave a radio interview on Civil War Talk radio, a national internet-based show, on April 19, 2013, for an hour-long discussion of his book, *New Bedford's Civil War*.

### Awards

**Dr. James McDonald** travelled to '[Ecole de Gouvernance et d'Economie](#) (EGE Rabat) in Rabat, Morocco as a Fulbright Specialist to act as a consultant and a specialist in October and November of 2013.

**Dr. Michelle Orihel** received a research fellowship from the David Library of the American Revolution, for her project "The Contest over the Founding: The Democratic-Republican Societies and the Troubled Beginnings of Opposition Politics in America," in Washington Crossing, PA. With the support of the fellowship, Dr. Orihel spent one month at that library researching my current book project on opposition politics in 1790s America.

## Political Science & Criminal Justice

### Publications and Presentations

**Dr. Bradley Cook** (Provost) spoke at the closing session of the SUU Leadership Conference, "Lead, Share, Build: Together, Today, Tomorrow" on March 1, 2013.

**Dr. John Howell** presented "Not Just for Trekkies Anymore: Using Star Trek to Teach Political Science" at the Weber State University Teaching and Learning Symposium, April 5, 2013.

**Dr. Carl Franklin** published "Measuring the Association Between a Public Administrator's Level of Education and the Administrator's Willingness to Use Alternative Funding Resources," in the *International Journal of Social Science Research* 1.1. (Summer 2013).

**Dr. G. Michael Stathis** presented a paper, "Imperial Restoration? Barack Obama and American Foreign Policy," at the 2013 Annual Meeting of The Western Political Science Association in Hollywood California in April. He also acted as the discussant for a panel entitled "Theoretical Approaches to International Relations: Placing International Mediation in International Relations Theory."

### Projects

**Dr. Michael G. Stathis** is a continuing guest on the program SITREP for the British Forces Broadcasting System, speaking on American foreign policy and international relations. "SITREP" is a weekly radio program on the British Forces Radio System out of London which goes out live and on-line...the topics are usually political and military with emphasis on current global affairs. Dr. Stathis writes, "I started to participate as something of a regular guest for an American point of view or source of expertise in 2001. The format is as a news program and open discussion with regular commentators in London...I of course do my bit over the phone at 6:30 in the morning on the occasional Thursday. As I tell my students, I always know when there is something afoot in world affairs when I get an e-mail or phone call from London requesting



SPRING 2014 • VOLUME 3 • ISSUE 1

INTRODUCTION

COMMUNITY ENGAGEMENT CENTER

CREATIVE ENGAGEMENT CENTER

OUTDOOR ENGAGEMENT CENTER

LEADERSHIP ENGAGEMENT CENTER

GLOBAL ENGAGEMENT CENTER

SCHOOL OF BUSINESS

COLLEGE OF EDUCATION & HUMAN  
DEVELOPMENT

COLLEGE OF HUMANITIES &  
SOCIAL SCIENCES

COLLEGE OF PERFORMING &  
VISUAL ARTS

COLLEGE OF SCIENCE & ENGINEERING

SCHOOL OF CONTINUING AND  
PROFESSIONAL STUDIES

UNIVERSITY COLLEGE

HONORS PROGRAM

LIBRARY

UGRASP

STUDENT SERVICES

FACULTY SCHOLARLY SUPPORT  
FUND GRANTS

my presence on the program. It also gives me a chance to see certain issues from a British or European perspective which can be very interesting and useful here. It has also given us the opportunity to keep tabs on the status of the so-called 'special relationship' between the United Kingdom and the United States which may be tested at times but remains strong. The program has also allowed moments when I have promoted Cedar City, Southern Utah University, and southern Utah in general on a global podium...it is still a bit strange to be listening to the program and hear one of the commentators say 'We are now going to Cedar City, Utah and Michael Stathis who is professor of political science and international relations at Southern Utah University.' It is a great deal of fun as well."

### Awards

**Dr. Michael G. Stathis** and **Dr. Bradley Cook** (Provost) co-authored a paper, "Democracy and Islam: Promises and Perils for the Arab Spring Protests," published in the *Journal of Global Responsibility* 3: 2 (2012, which was recognized as Outstanding Paper winner, *Literati Network Award for Excellence*, 2013.

## Psychology

### Publications and Presentations

**Dr. David Shwalb**, with B. J. Shwalb and M. Takahashi published *Hajimete no shinrigaku eigo ronbun: Kochoshinpan* [How to publish psychology articles in English, New Edition]. Kyoto: Kitaoji Shobo, 2013. (in Japanese)

### Leadership and Awards

**Dr. Grant Corser** was appointed the director for the Center of Excellence for Teaching and Learning.



Dean: Shauna Mendini

Website: <http://suu.edu/pva/>



South Hall West Entrance

### CPVA Highlights

The Sorenson Legacy Foundation donated a \$6 million gift to create the Beverley Taylor Sorenson Center for the Arts, as well as ongoing support for ArtsFUSION. The Center will serve as home to the Southern Utah Museum of Art (SUMA) and the new Shakespeare Theatre. The Friends of the Braithwaite Fine Arts Gallery came together to contribute \$25,000 to SUMA.

An on-line Master of Arts in Arts Administration program was approved by the Utah State Board of Regents and was made available for students fall semester 2013.

CPVA hosted a delegation of artists/scholars from Beijing, China, who

# COLLEGE OF PERFORMING & VISUAL ARTS

## Art & Design

### Publications and Presentations

**Professor Jeff Hanson** presented "What Language Looks Like" and conducted a workshop on typographic poster design as part of a faculty exchange at Renmin University, Beijing, China, in May 2013.

**Dr. Andrew Marvick** published an article on the American still-life painter Luigi Lucioni for the journal of *The Cincinnati Museum of Art*.

**Professor Deborah K. Snider** has an art quilt appearing in *Art Quilt Portfolio: People and Portraits*, Spring 2013.

**Professor Deborah K. Snider** presented "An Unsuspecting Leader" at the SUU Leadership Conference, February 28-March 1. Her presentation examined the components that contribute to those who move and shape the world in visionary and exciting ways.

### Projects and Exhibitions

**Professor Jessica Gerlach's** design project, "What's So Important about Water?" and corresponding essay was published in *Groundwater: The Art, Design, and Science of Dry River*, edited by Ellen McMahon, Ander Monson, and Beth Weinstein, and published by the Confluence for Creative Inquiry, 2013.

**Professor Susan Harris** exhibited her work in the *Faculty and Assistants Exhibition* of the Sally D. Francisco Gallery at Peter's Valley Craft Center in Layton, NJ. She also began researching for the forthcoming exhibit, *Fifty from Six: Contemporary Ceramic Art from Six Rocky Mountain States*, which she will be curating in the Braithwaite Gallery.

**Dr. Andrew Marvick** mounted an exhibition of watercolors at the Renmin School of Art in Beijing, China, entitled "Day Corrupted and Enriched by Night."

### Awards and Leadership

**Dr. Andrew Marvick** has been invited to join the editorial board of ALMSD, an internationally recognized scholarly association focusing on Symbolist art, literature, and music.



SPRING 2014 • VOLUME 3 • ISSUE 1

INTRODUCTION

COMMUNITY ENGAGEMENT CENTER

CREATIVE ENGAGEMENT CENTER

OUTDOOR ENGAGEMENT CENTER

LEADERSHIP ENGAGEMENT CENTER

GLOBAL ENGAGEMENT CENTER

SCHOOL OF BUSINESS

COLLEGE OF EDUCATION & HUMAN DEVELOPMENT

COLLEGE OF HUMANITIES & SOCIAL SCIENCES

COLLEGE OF PERFORMING & VISUAL ARTS

COLLEGE OF SCIENCE & ENGINEERING

SCHOOL OF CONTINUING AND PROFESSIONAL STUDIES

UNIVERSITY COLLEGE

HONORS PROGRAM

LIBRARY

UGRASP

STUDENT SERVICES

FACULTY SCHOLARLY SUPPORT FUND GRANTS



SPRING 2014 • VOLUME 3 • ISSUE 1

INTRODUCTION

COMMUNITY ENGAGEMENT CENTER

CREATIVE ENGAGEMENT CENTER

OUTDOOR ENGAGEMENT CENTER

LEADERSHIP ENGAGEMENT CENTER

GLOBAL ENGAGEMENT CENTER

SCHOOL OF BUSINESS

COLLEGE OF EDUCATION & HUMAN  
DEVELOPMENT

COLLEGE OF HUMANITIES &  
SOCIAL SCIENCES

COLLEGE OF PERFORMING &  
VISUAL ARTS

COLLEGE OF SCIENCE & ENGINEERING

SCHOOL OF CONTINUING AND  
PROFESSIONAL STUDIES

UNIVERSITY COLLEGE

HONORS PROGRAM

LIBRARY

UGRASP

STUDENT SERVICES

FACULTY SCHOLARLY SUPPORT  
FUND GRANTS

participated in SUU celebrating the legacy of Helen Foster Snow with a series of events that culminated in remarks by the guests and performance by SUU's Opus Chamber Choir, Percussion Ensemble, dancers from the Department of Theatre Arts and Dance, and duet by **Dr. Xun Sun** and **Dr. Lynn Vartan** performing a variation from **Dr. Keith Bradshaw's** compositions from the *Dream of Helen*.

## Music

### Publications , Presentations and Performances

**Dr. Keith Bradshaw** and **Dean Shauna Mendini** presented "Transformative Education Through Cross-Cultural Collaboration" at the COPLAC conference at Shepherd University, West Virginia, June 2013, where they discussed their work with the Hubei Opera and Dance Drama Theater and SUU students to produce the *Dream of Helen*.

**Professor Carol Ann Modesitt** presented and sang at the national conference of the National Opera Association in January 2013 in Portland Oregon.

The Department of Music presented Mozart's *Don Giovanni* in both English and Italian at the Heritage Center Theatre. **Professor Carol Ann Modesitt** directed the production along with music director **Dr. Willem van Schalkwyk** and conductor **Dr. Xun Sun**.

### Projects

**Dr. Keith Bradshaw** composed *Canyons Concerto* for **Dr. Lynn Vartan**, which was premiered November 9, 2013, by the Orchestra of Southern Utah. It will be performed again in May 2014 with the Hubei Symphony in Wuhan China. "*Canyon Concerto* is based on four areas of Southern Utah: Bryce Canyon, Goblin Valley, Arches, and Zion's," Bradshaw explained on the Orchestra of Southern Utah's Website (<http://osucedarcity.blogspot.com>). "Each of the four movements treat formations in these areas, such as The Gossips in Arches, and Hoodoos in Bryce, imagining each coming to life, dancing, playing, chatting, or just visiting. The piece is written for my talented colleague, percussionist Dr. Lynn Vartan, who has contributed significantly to this work, beginning with an idea and seeing it come to life." Vartan performed as guest soloist for the premiere.

## Theatre Arts and Dance

### Publications and Presentations

**Professor Denise Purvis** (Dance) presented at the International Somatics in Dance Technique conference in Brockport, NY, in June 2013. As part of the conference, she premiered a solo of her own choreography in an adjudicated concert.



SPRING 2014 • VOLUME 3 • ISSUE 1

INTRODUCTION

COMMUNITY ENGAGEMENT CENTER

CREATIVE ENGAGEMENT CENTER

OUTDOOR ENGAGEMENT CENTER

LEADERSHIP ENGAGEMENT CENTER

GLOBAL ENGAGEMENT CENTER

SCHOOL OF BUSINESS

COLLEGE OF EDUCATION & HUMAN  
DEVELOPMENT

COLLEGE OF HUMANITIES &  
SOCIAL SCIENCES

COLLEGE OF PERFORMING &  
VISUAL ARTS

COLLEGE OF SCIENCE & ENGINEERING

SCHOOL OF CONTINUING AND  
PROFESSIONAL STUDIES

UNIVERSITY COLLEGE

HONORS PROGRAM

LIBRARY

UGRASP

STUDENT SERVICES

FACULTY SCHOLARLY SUPPORT  
FUND GRANTS

**Professor Brian Swanson** (Theatre) participated in a panel of educators and professionals in discussing and offering strategies to prevent burnout within the industry at the United States Institute for Theatre Technology (USITT) Annual Conference in Milwaukee, WI, in March 2013. This conference is international in nature bringing designers and technicians from around the world to meet and discuss issues of importance for both the academic and professional aspects of the industry.

### Projects

**Professor Kay Andersen** taught in Mexico City at the Estudio Profesional de Danza de Ema Pulido for their summer 2013 intensive. He also taught in Salt Lake City as a faculty member of the summer intensive Move-it Workshop of the Ririe-Woodbury Dance Company.

**Professor Paul C. Ocampo** taught dance improvisation workshop at the National Taiwan University of Arts in July 2013 and ballet technique class in Manila Philippines in June 2013.

**Dr. Keith Bradshaw** and **Professor Peter Sham** are currently working on a musical based on the Mountain Meadows Massacre.

**Professor Peter Sham** and **Brad Carroll** (Artist in residence, Music)'s musical, *Lend Me a Tenor*, is in preparation for a Broadway debut in 2014-15.

The Department of Theatre Arts and Dance hosted the American College Dance Festival (ACDF) Northwest Regional Conference, March 12-15, 2013. Under the supervision of **Professor Kay Andersen**, the Department of Dance hosted nearly 300 students and dance educators who attended the Northwest Regional Conference.

## Arts Administration Graduate Programs

### Publications and Presentations

**Dr. James Marchant**, with Todd Dellinger (Assistant Professor at Rider University), presented on "Challenging and Provocative Work in the Higher Education Classroom" at the Association of Arts Administration Educators Conference in New Orleans, LA, in March 2013.

In April 2013, **Dr. James Marchant** took first year MFA students to Washington, D.C., to attend the Emerging Arts Leaders Symposium where they attended sessions by leaders in the field and had the opportunity to network with other emerging leaders. The students also attended National Arts Advocacy Day, which is sponsored by Americans for the Arts. The students spent a day learning how to lobby and advocate for the arts. They then spent a day lobbying and advocating for the arts on Capitol Hill.

### Awards and Leadership

**Professor Rachel Bishop** was hired as the Director of Arts Administration, beginning Fall 2013.



SPRING 2014 • VOLUME 3 • ISSUE 1

INTRODUCTION

COMMUNITY ENGAGEMENT CENTER

CREATIVE ENGAGEMENT CENTER

OUTDOOR ENGAGEMENT CENTER

LEADERSHIP ENGAGEMENT CENTER

GLOBAL ENGAGEMENT CENTER

SCHOOL OF BUSINESS

COLLEGE OF EDUCATION & HUMAN  
DEVELOPMENT

COLLEGE OF HUMANITIES &  
SOCIAL SCIENCES

COLLEGE OF PERFORMING &  
VISUAL ARTS

COLLEGE OF SCIENCE & ENGINEERING

SCHOOL OF CONTINUING AND  
PROFESSIONAL STUDIES

UNIVERSITY COLLEGE

HONORS PROGRAM

LIBRARY

UGRASP

STUDENT SERVICES

FACULTY SCHOLARLY SUPPORT  
FUND GRANTS



**PVA students attend the opening of *Jim Jones: The San Blas Years* at The Braithwaite Gallery.**

## Braithwaite Fine Arts Gallery

The Braithwaite Gallery showcased the early art of renowned Utah artist in *Jim Jones: The San Blas Years*. Curated by **Dr. Jim Aton**, SUU Professor of English and author of a forthcoming biography of Jim Jones.

## Center for Shakespeare Studies

### Presentations

**Professor Don Weingust** presented a paper in the seminar “Contemporary Actors as Evidence” at the annual meeting of the Shakespeare Association of America, in March 2013 in Toronto, Ontario, Canada. Weingust’s paper, “Personness, Passionating and Original Practices” (the latter term a reference to ways some present-day practitioners expect that Shakespeare and his theatrical colleagues performed) continues a long-running dialogue in print and conference sessions with the seminar’s leader, University of Pennsylvania professor Cary Mazer, on questions of Shakespearean performance practice, history and theory. The conversation will find its next expression in print as part of Weingust’s current book project on *Original Practices in Shakespearean Performance*, forthcoming from Palgrave Macmillan.

Dean: Robert Eves

Website: <http://suu.edu/cose/>



SUU Science Building

### College Highlights

#### FRESHMEN INTEREST GROUPS

In an effort to further SUU's engagement effort, Freshman Interest Groups (commonly known as FIGs) were initiated for incoming freshmen who are declared majors in agriculture & nutrition, biology, nursing, and physical science. For freshman in the FIG program, courses were selected for by a WMG COSE Academic Advisor to ensure the correct courses are being taken. This program also involves faculty mentors in each discipline who work closely with FIG students and conduct additional study groups and participate with them in extra-curricular activities. Following a recent campus visit by nationally renowned enrollment management specialist Charles Schroeder, Dean Patrick Clarke (University College) reported, "Charles has never seen a more successful implementation of a model like

# WALTER MAXWELL GIBSON COLLEGE OF SCIENCE AND ENGINEERING

## Agriculture and Nutrition

### Publications and Presentations

**Dr. Chad L. Gasser** published "Considerations on Puberty in Replacement Beef Heifers," in the *Journal of Animal Science*, 91.3 (2013): 1336-1340.

**Dr. Chad L. Gasser** presented "Considerations on Timing of Calving Season" at The 6th Annual Cowman's Reproduction Workshop in Alton, UT (September 2013). He has contributed to this workshop in conjunction with Utah State University Extension and University of Arizona Extension each year since it began in 2008.

**Professor Artis Grady** and **Professor Rea Gubler** (Education) presented Call to Action!: Childhood Obesity is Everyone's Problem for the American Association of Family and Consumer Sciences National Professional Webinar Series (2013).

**Professor Matthew C. Schmidt** and **Dr. Shawn L. Christiansen** (Teacher Education and Human Development) presented "Using Study Abroad as a Context for Teaching Family and Consumer Sciences" at the 5th annual Scholarship of Teaching and Engagement Conference, Utah Valley University, Orem, UT, March 28-9, 2013.

**Professor Matthew C. Schmidt** and **Dr. Shawn L. Christiansen** (Teacher Education and Human Development) presented a poster, "A Comparison of Elementary School Lunch Between the United States and Japan" at the 2013 Food and Nutrition Conference and Expo, Houston, TX, October 2013.

**Professor Matthew C. Schmidt** published "The Effect of Education on Hydration Status of Female Collegiate Gymnasts at Southern Utah University" in the *Big Sky Journal*, 2013.

**Dr. Randall Violett**, with Sara Davis, Boyd Barney, Jason Carlile, Mitch Bayles, and Dr. Randall Violett, presented "Native vs. Non-native Re-vegetation of Pinyon pine (*Pinus edulis*) and Utah Juniper (*Juniperus osteosperma*) Ecosystems" at the Society for Range Management International meeting, SRM Rangeland cup competition, Oklahoma City, OK, 2013.



SPRING 2014 • VOLUME 3 • ISSUE 1

INTRODUCTION

COMMUNITY ENGAGEMENT CENTER

CREATIVE ENGAGEMENT CENTER

OUTDOOR ENGAGEMENT CENTER

LEADERSHIP ENGAGEMENT CENTER

GLOBAL ENGAGEMENT CENTER

SCHOOL OF BUSINESS

COLLEGE OF EDUCATION & HUMAN  
DEVELOPMENT

COLLEGE OF HUMANITIES &  
SOCIAL SCIENCES

COLLEGE OF PERFORMING &  
VISUAL ARTS

COLLEGE OF SCIENCE & ENGINEERING

SCHOOL OF CONTINUING AND  
PROFESSIONAL STUDIES

UNIVERSITY COLLEGE

HONORS PROGRAM

LIBRARY

UGRASP

STUDENT SERVICES

FACULTY SCHOLARLY SUPPORT  
FUND GRANTS



SPRING 2014 • VOLUME 3 • ISSUE 1

INTRODUCTION

COMMUNITY ENGAGEMENT CENTER

CREATIVE ENGAGEMENT CENTER

OUTDOOR ENGAGEMENT CENTER

LEADERSHIP ENGAGEMENT CENTER

GLOBAL ENGAGEMENT CENTER

SCHOOL OF BUSINESS

COLLEGE OF EDUCATION & HUMAN  
DEVELOPMENT

COLLEGE OF HUMANITIES &  
SOCIAL SCIENCES

COLLEGE OF PERFORMING &  
VISUAL ARTS

COLLEGE OF SCIENCE & ENGINEERING

SCHOOL OF CONTINUING AND  
PROFESSIONAL STUDIES

UNIVERSITY COLLEGE

HONORS PROGRAM

LIBRARY

UGRASP

STUDENT SERVICES

FACULTY SCHOLARLY SUPPORT  
FUND GRANTS

ours in its first iteration. He indicated the [FIG] students had nothing but very positive things to say about the cohort registration and how much they appreciated being placed into the right classes their first semester. They also commented on how well the Living Learning piece is going in the Residence Hall in that the students living on the COSE floor are truly developing a sense of identity related to their majors, they are 'working hard' together on their common homework assignments, and that their overall satisfaction seems to be through the roof. As Charles left our wrap up meeting, he made it clear he is going be talking a lot about our efforts as he travels around the country."

#### ENGINEERING TECHNOLOGY GAINS SPECIALIZED ACCREDITATION

The SUU Engineering Technology program with its emphases in Computer Added Drafting/Computer Assisted Machining (CAD/CAM), Electronic Engineering Technology (EET), and Architecture/Civil Design has been accredited by ABET, a nonprofit, non-governmental organization that accredits college and university programs in the disciplines of applied science, computing, engineering, and engineering technology. This is the fourth SUU program to gain ABET accreditation (the other three being Computer Science, Information Systems, and Integrated Engineering).

#### iUTAH EPSCoR GRANT

SUU involvement grows in iUTAH (innovative Urban Transitions and Aridregion Hydro-sustainability), a

**Dr. Cynthia B. Wright** and **Nica Clark**, RD, published an abstract, "Study of A1c and Body Fat among SUU Students, Staff, and Faculty" in the *Journal of Nutrition Education and Behavior* (2013). This abstract was the end-product of the mentoring of Susie Peterson, Alyssa Simon, Madison Wray, Jessica Brown, Emily Clendening, and Sierra Gish in an undergraduate research project. The students also presented this project at the annual meeting of the Utah Academy of Nutrition and Dietetics held in Ogden, UT, 2013.

**Dr. Cynthia B. Wright** presented "Calcium needs during stages of growth and development" and "The Facts about Juicing and Green Smoothies" at the Utah School Nutrition Association Annual Meeting in St. George, UT, 2013.

#### Projects

Professors **Artis Grady** and **Matthew Schmidt** served as mentors for three student research projects that were presented at the Utah Academy of Nutrition and Dietetics Annual Meeting in Ogden, UT (2013). The research projects and others involved included: "Use of Complementary and Alternative Medicines at Southern Utah University" with students Brian Grady and Heather Peatross. "Developing Recipes that Reduce Overall Fat Content in Baked Desserts with Common Foods as Fat Substitutes" with students Kaylee Briggs, Samantha Hirschi, Sarah Miller, and Kylie Stringham. "Breast in Show: A Comparison of Message Styles Regarding Breastfeeding" with Dr. Lionel Grady (CoHSS) and students Megan Domgaard and Alisa Montano.

**Professor Matthew C. Schmidt** is the co-director of the Family Life and Nutrition Study Abroad Program to Japan. He and Dr. Shawn Christiansen (EDUC) have taken a group of students to Japan for 3 weeks each of the past four summers.

**Professors Matthew Schmidt** and **Dr. Grant Corser** (Psychology), served as mentors for two students whose research project was presented at the Rocky Mountain Psychological Association in Denver, CO, 2013. The research project was "He is not fat, unhealthy, lazy, etc., he plays football: A social cognitive bias in person perception evaluations" with students Michael Saucedo and Wendy Gale.

**Dr. Randall Violett** assisted with the "2013 Utah Natural Resources Field School" Gooseberry Administrative Site Fishlake National Forest July 29- August 1, 2013. Served as a camp educator for 29 high school students from across Utah.

#### Awards

**Professor Matthew C. Schmidt** received Outstanding Contributor Award 2013, Honors Program at Southern Utah University.



SPRING 2014 • VOLUME 3 • ISSUE 1

INTRODUCTION

COMMUNITY ENGAGEMENT CENTER

CREATIVE ENGAGEMENT CENTER

OUTDOOR ENGAGEMENT CENTER

LEADERSHIP ENGAGEMENT CENTER

GLOBAL ENGAGEMENT CENTER

SCHOOL OF BUSINESS

COLLEGE OF EDUCATION & HUMAN  
DEVELOPMENT

COLLEGE OF HUMANITIES &  
SOCIAL SCIENCES

COLLEGE OF PERFORMING &  
VISUAL ARTS

COLLEGE OF SCIENCE & ENGINEERING

SCHOOL OF CONTINUING AND  
PROFESSIONAL STUDIES

UNIVERSITY COLLEGE

HONORS PROGRAM

LIBRARY

UGRASP

STUDENT SERVICES

FACULTY SCHOLARLY SUPPORT  
FUND GRANTS

statewide effort dedicated to maintaining and improving water sustainability in Utah. Funded by the National Science Foundation's EPSCoR program (Experimental Program to Stimulate Competitive Research), this five-year, \$20 million competitive award will assist in building the human and research infrastructure needed to sustainably manage Utah's water resources. SUU biologists from WMG COSE have joined the extensive iUtah team to serve in leadership (Dr. Paul Spruell), external engagement (Dr. Jacqueline Grant), and research roles (Drs. Betsy Bancroft and Terri Hildebrand). The iUtah grant provides opportunities for SUU undergraduates to engage in research at research intensive universities throughout the state with its iFellows summer research program and supports related faculty research. The iUtah grant is the state's largest EPSCoR award to date.

**Professor Dean Winward** received the Utah Campus Compact's 2013 SUU Award for Civically Engaged Scholar for his work with the Agriculture club and upper-division Agricultural Leadership courses.

## Biology

### Publications and Presentations

**Betsy Bancroft**, N. J. Baker, T.S. Garcia published "A Meta-analysis of the Effects of Pesticides and Fertilizers on Survival and Growth of Amphibians" in *Science of the Total Environment* 44 (2103): 150-56.

**Dr. Helen Boswell** presented on the links between science and fantasy in a TEDxSUU presentation on March 27, 2013.

**Dr. Helen Boswell** was the keynote speaker at the Banned Book Weeks Event at SUU. She spoke on "The Importance of Intellectual Freedom," on 24 September 2013.

**Dr. Frederic Govedich, Dr. Paul Spruell** and T. Wood presented "Strength in Numbers: Behavioral Response of Speckled Dace and Virgin Spinedace to Invasive Crayfish" at the Annual Utah Conference on Undergraduate Research, February 22, 2013, Logan, UT.

**Dr. Frederic Govedich**, with H. Shumway and B.A. Bain presented "Feeding Strategies and Prey Preferences in Predacious Leeches" at the Annual Utah Conference on Undergraduate Research, February 22, 2013, Logan, UT.

**Dr. Frederic Govedich**, with W. E. Moser and D.J. Klemm published "Annelida Hirudinea (Leeches)" in Reference Module in Earth Systems and Environmental Sciences, Encyclopedia of Inland Waters, Elsevier, 2013.

**Dr. William Heyborne** and S. P. Mackessy published "Identification and Characterization of a Taxon-specific Three-Finger Toxin from the Venom of the Green Vinesnake (*Oxybelis fulgidus*; family Columbridae)" in *Biochimie* 95.10 (2013): 1923-1932.

**Dr. William Heyborne** published "Using Big Box Biology to Teach Diversity" in *The American Biology Teacher* 75.2 (2013): 133-34.

**Dr. Terri Hildebrand, Professor Mary Jo Tufte**, P. Manwill, and H. Kansagra presented "Antimicrobial properties of essential oils isolated from Anthoxanthum species against soil bacteria" at the Annual Utah Conference on Undergraduate Research, February 22, 2013, Logan, UT.

**Dr. Paul Spruell** and S. Miller presented "Ability of Wolf Spider's (Lycosidae) to Assess their Nutritional Needs and Deficiencies" at the Annual Utah Conference on Undergraduate Research, February 22, 2013, Logan, UT.



SPRING 2014 • VOLUME 3 • ISSUE 1

INTRODUCTION

COMMUNITY ENGAGEMENT CENTER

CREATIVE ENGAGEMENT CENTER

OUTDOOR ENGAGEMENT CENTER

LEADERSHIP ENGAGEMENT CENTER

GLOBAL ENGAGEMENT CENTER

SCHOOL OF BUSINESS

COLLEGE OF EDUCATION & HUMAN  
DEVELOPMENT

COLLEGE OF HUMANITIES &  
SOCIAL SCIENCES

COLLEGE OF PERFORMING &  
VISUAL ARTS

COLLEGE OF SCIENCE & ENGINEERING

SCHOOL OF CONTINUING AND  
PROFESSIONAL STUDIES

UNIVERSITY COLLEGE

HONORS PROGRAM

LIBRARY

UGRASP

STUDENT SERVICES

FACULTY SCHOLARLY SUPPORT  
FUND GRANTS

**Dr. Matthew Weeg**, with M. Barney and J. Keeler presented “Fire Retardant as an Environmental Risk Factor Contributing to Parkinson’s Disease” at the Annual Utah Conference on Undergraduate Research, February 22, 2013, Logan, UT.

**Dr. John R. Taylor**, with Andrea Bornemeier and Amber Van Alfen (National Parks Service), and Cameron Jack (undergraduate) published “Bat Research and Interpretive Programming: Increasing Public Interest in Pipe Spring National Monument” in *Park Science* 30.1 (Summer 2013). Scientific research with Pipe Spring National Monument served as the focal point for the creation of new interpretive programming. These programs attracted hundreds of park visitors who came to learn about bats, salamanders, stars and insects.

**Dr. John R. Taylor**, with Andrea Bornemeier and Amber Van Alfen (National Parks Service), and Cameron Jack (undergraduate) presented “Synergistic Relationship between Scientific Research and the National Park Service” at the 2th Biennial Conference of the Science & Management on the Colorado Plateau. Flagstaff, AZ, September 2013.

**Dr. John R. Taylor** published “How to Do It: A Simply Inquiry-Based Lab for Teaching Osmosis” in *American Biology Teacher*, October 2013. This simple inquiry-based lab was designed to teach the principle of osmosis while also providing an experience for students to use the skills and practices commonly found in science. Students first design their own experiment using very basic equipment and supplies, which generally results in mixed, but poor outcomes. Classroom “talk and argument” is then used to determine how their experiments could be changed to gather more reliable data. The final assessment consists of both formal and subjective testing, requiring students to explain their design choices.

### Awards

**Dr. Jacqueline Grant**, curator of the Garth and Jerri Frehner Museum of Natural History, was named a 2013 Service Learning Fellow.

**Dr. John R. Taylor** received the 2013 SUU Distinguished Educator Award.

## Computer Science & Information Systems

### Publications and Presentations

**Dr. Nathan Barker, Professor Constance Nyman**, and **Professor Laurie Harris** presented “A Comparison of Student Performance: Traditional Versus On-Line in a Skills-Based Computer Applications Course” at the *American Association of Behavioral and Social Sciences*, Las Vegas, NV, February 2013.



**SUU students participating in the  
Rural Health Scholars program**





SPRING 2014 • VOLUME 3 • ISSUE 1

INTRODUCTION

COMMUNITY ENGAGEMENT CENTER

CREATIVE ENGAGEMENT CENTER

OUTDOOR ENGAGEMENT CENTER

LEADERSHIP ENGAGEMENT CENTER

GLOBAL ENGAGEMENT CENTER

SCHOOL OF BUSINESS

COLLEGE OF EDUCATION & HUMAN  
DEVELOPMENT

COLLEGE OF HUMANITIES &  
SOCIAL SCIENCES

COLLEGE OF PERFORMING &  
VISUAL ARTS

COLLEGE OF SCIENCE & ENGINEERING

SCHOOL OF CONTINUING AND  
PROFESSIONAL STUDIES

UNIVERSITY COLLEGE

HONORS PROGRAM

LIBRARY

UGRASP

STUDENT SERVICES

FACULTY SCHOLARLY SUPPORT  
FUND GRANTS

**Dr. Cecily Heiner** presented “Practical Ultra-Portable Intelligent Tutoring Systems (PUPITS): An Interactive Event” at the conference on Artificial Intelligence in Education (AIED) in Memphis, TN, 2013.

**Dr. Shalini Kesar** presented a workshop (in collaboration with two colleagues), “Bringing Creativity into the Classroom via Technology” at the 16th Annual Meeting of the American Association of Behavioral and Social Sciences (AABSS). The meeting was held at Harrah’s Las Vegas, NV, 14-15 February 2013.

**Dr. Shalini Kesar** presented “The STEAM Project” at the 16th Annual Meeting of the American Association of Behavioral and Social Sciences (AABSS). The meeting was held at Harrah’s Las Vegas, NV, 14-15 February 2013.

**Dr. Shalini Kesar** presented “How do We Decide What is Right?: Using Triple-Loop Learning in Context of Management of Computer Crime” at *Ethicomp* 2013, Kolding Denmark, June 2013.

**Dr. Shalini Kesar** presented “Rethinking Education: STEM becomes a STEAM project” at *Ethicomp* 2013, Kolding Denmark, June 2013.

**Dr. Shalini Kesar** was invited to participate in Academic resources workshop, NCWIT, Tucson, Arizona, 2013.

**Dr. Dezhi Wu** and Dr. Katia Passerini will publish “Uncovering Knowledge-based Time-Management Practices: Implications for Project Management” in *International Journal of Managing Projects in Business*, Forthcoming 2013.

**Dr. Dezhi Wu** presented “IT Professionals’ Time Management Strategies for Value-Added Knowledge Creation in Projects” at the Northeast Decision Science Institute 2013, New York, April 2013.

**Dr. Dezhi Wu**, Karen Patten, and Katia Passerini published “IT Professionals’ Time Management Strategies for Value-Added Knowledge Creation in Projects” in Proceedings of Northeast Decision Sciences Institute 2013 Annual Conference, Brooklyn, NY, April 2013.

### Projects

**Dr. Shalini Kesar** has run a Computer Club at North Elementary School since Fall 2012, holding six weekly sessions in Spring 2013 and Fall 2013. She facilitated a Computer Club (NECC). This is a first of its kind computer club that aims to engage both girls and boys (3rd through – 5th grade) in computer related activities. The NECC is an out- of-school weekly activity, where Dr. Kesar has designed a set of hands-on/minds-on activities to spark the young students’ creativity and imagination while gaining knowledge and learning about computers. Undergraduate students are also involved in this outreach STEAM project. The long-term objective is to also motivate and recruit diverse groups of students that represent a pool from females, under-representative and/or minorities.

**Dr. Shalini Kesar** gave a guest lecture and met with faculty at Universitat Rovira i Virgili, Tarragona, Spain to discuss pedagogy and potential for future collaborations, June 2013.

### Awards and Leadership

**Dr. Cecily Heiner** received a subaward from the National Science Foundation (NSF) through Illinois State University to investigate Web Services in introductory computer science courses.



SPRING 2014 • VOLUME 3 • ISSUE 1

INTRODUCTION

COMMUNITY ENGAGEMENT CENTER

CREATIVE ENGAGEMENT CENTER

OUTDOOR ENGAGEMENT CENTER

LEADERSHIP ENGAGEMENT CENTER

GLOBAL ENGAGEMENT CENTER

SCHOOL OF BUSINESS

COLLEGE OF EDUCATION & HUMAN  
DEVELOPMENT

COLLEGE OF HUMANITIES &  
SOCIAL SCIENCES

COLLEGE OF PERFORMING &  
VISUAL ARTS

COLLEGE OF SCIENCE & ENGINEERING

SCHOOL OF CONTINUING AND  
PROFESSIONAL STUDIES

UNIVERSITY COLLEGE

HONORS PROGRAM

LIBRARY

UGRASP

STUDENT SERVICES

FACULTY SCHOLARLY SUPPORT  
FUND GRANTS

## Engineering Technology & Construction Management

### Publications and Presentations

**Professor Richard Cozzens** presented on "TICE Team Leadership" at the SUU Leadership Conference, February 28-March 1, 2013. He spoke about the challenges that the Technology Intensive Concurrent Enrollment (TICE) Team faced for creating a successful introductory engineering course.

**Professor Richard Cozzens**, Professor Isabelle Borisova, J. Farner, T. Paskett, E. Perez presented "Development of an Open-Source Concurrent Enrollment Course that Introduces Students to the Engineering Design and Documentation Process" at the 120th ASEE Annual Conference and Exposition, Atlanta, GA, June 2013.

**Professor Richard Cozzens**, Professor Isabelle Borisova, and Dr. Shalini Kesar (CSIS) presented "Bringing Creativity into the Classroom via Technology: Using Tech as a Pedagogical Tool" at the American Association of Behavioral and Social Sciences, Las Vegas, LV, February 2013.

**Professor Richard Cozzens** published "Autodesk Inventor 2014 Workbook" with *SDC Publications*, September 2013.

**Professor Matthew Edwards** published an Instruction Manual for *Modern Arch Structures* (whitepaper, internal document).

**Dr. L. Scott Hansen** published "Autodesk Inventor 2014: A Tutorial Introduction" with *SDC Publications*, April 2013.

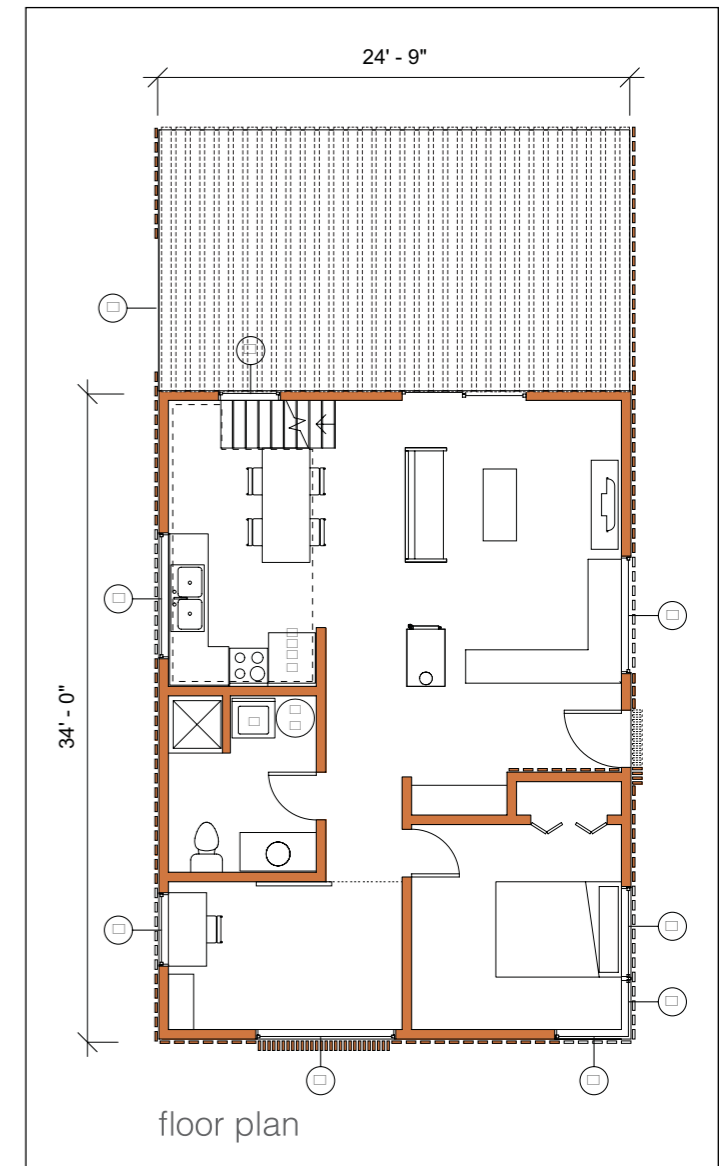
### Awards and Grants

**Professor Richard Cozzens**, **Professor Isabelle Borisova**, and **Dr. Shalini Kesar** (CSIS) received a grant (\$1,875,000) from USHE/USOE for *Technology Intensive Concurrent Enrollment*, July 2012-December 2013.

## Integrated Engineering

### Publications and Presentations

**Dr. Glen Longhurst** co-authored "In Situ Measurement of Tritium Permeation through Stainless Steel," published in *Journal of Nuclear Materials* 437 (2013) 373-379. Other authors are Walter G. Luscher and David J. Senior of Pacific Northwest National Laboratory and Kevin K. Clayton of the Idaho National Engineering laboratory.



Billjohn Residence Architectural Drawings



SPRING 2014 • VOLUME 3 • ISSUE 1

INTRODUCTION

COMMUNITY ENGAGEMENT CENTER

CREATIVE ENGAGEMENT CENTER

OUTDOOR ENGAGEMENT CENTER

LEADERSHIP ENGAGEMENT CENTER

GLOBAL ENGAGEMENT CENTER

SCHOOL OF BUSINESS

COLLEGE OF EDUCATION & HUMAN  
DEVELOPMENT

COLLEGE OF HUMANITIES &  
SOCIAL SCIENCES

COLLEGE OF PERFORMING &  
VISUAL ARTS

COLLEGE OF SCIENCE & ENGINEERING

SCHOOL OF CONTINUING AND  
PROFESSIONAL STUDIES

UNIVERSITY COLLEGE

HONORS PROGRAM

LIBRARY

UGRASP

STUDENT SERVICES

FACULTY SCHOLARLY SUPPORT  
FUND GRANTS

**Dr. Glenn Longhurst** presented "Measuring the Permeability of Hydrogen in Metals" at the 4th North American Materials Education Symposium, Philadelphia, PA, March 2013.

**Dr. Thad Morton** published "Estimating the Mean Flow Field in Combustion Chambers" in *International Journal of Engine Research*, July 2013.

**Dr. John Murray** presented "DesignBuildBLUFF: Coyote Architecture of the Colorado Plateau" at the AAAS 94th Annual Meeting of the Pacific Division, Las Vegas, NV, June 2013.

**Dr. Des Penny**, represented by student and co-author Arlo Fawson, presented a paper entitled, "Approximate Analysis of Frames Subjected to Vertical Loads," at the Annual Conference of the Utah Academy of Sciences, Arts, and Letters, April 12, 2013 at Utah Valley University, Orem, Utah. It will subsequently be submitted for publication in the journal of the conference.

## Projects

**Dr. John Murray**, with Professor Rick Sommerfeld (University of Colorado, Denver), and CU graduate students, are designing and building pro-bono sustainable Houses as part of the DesignBuildBLUFF project. Dr. Murray's ENGR 3095 Engineering Design Lab II class project for the spring of 2013 involved contributing to the architecture, thermal design, and daylighting analysis of an 800 square foot, pro bono home, the 'Billjohn House,' for Navajo clients Harvey and Hilda Billjohn. They worked in conjunction with Professor Rick Sommerfeld, College of Architecture & Planning at the University of Colorado, Denver, and his graduate students. Following an initial meeting with the client, a site visit and survey, and a formal client needs assessment on the Navajo Reservation, communication between SUU students and University of Colorado students took place primarily via the Internet, cell phone, and interactive video conferencing technology. The project is currently being completed on the reservation under the auspices of the non-profit organization DesignBuildBLUFF. Construction is currently underway by University of Colorado students.

## Mathematics

### Publications and Presentations

**Dr. Seth Armstrong** (department chair) presented "Numerical Analysis of a Lotka-Volterra System with Diffusion" at the MAA Intermountain Section Meeting, Rexburg, ID, April 2013.

**Dr. Said Bahi** presented "Determinant of Service Quality in Higher Ed" at the IABE-2013 Winter Meeting, Orlando, FL, April 2013.

**Dr. Said Bahi**, A. Ahmad, and A. Ross published "Determinant of Service Quality in Higher Education: Underlying Structure of Students and teachers Perceptions" in the *European Journal of Management* 13.1 (2013).

**Dr. Said Bahi**, A. Ahmad, and A. Ross published "An Algorithm for Finding Non-Negative Minimal norm Solutions of Linear Systems" in the *International Journal of Numerical Analysis and Modeling*. 10.3 (2013).

**Dr. James Brandt** published "Classroom Activities for Introducing Equivalence Relations" in *PRIMUS: Problems, Resources, and Issue in Mathematics undergraduate Studies* 23.2 (2013): 150-60.

**Dr. Jianlong Han** presented "A Nonlocal Evolution Equation" at the MAA Intermountain Section Meeting, Rexburg, ID, April 2013.



SPRING 2014 • VOLUME 3 • ISSUE 1

INTRODUCTION

COMMUNITY ENGAGEMENT CENTER

CREATIVE ENGAGEMENT CENTER

OUTDOOR ENGAGEMENT CENTER

LEADERSHIP ENGAGEMENT CENTER

GLOBAL ENGAGEMENT CENTER

SCHOOL OF BUSINESS

COLLEGE OF EDUCATION & HUMAN  
DEVELOPMENT

COLLEGE OF HUMANITIES &  
SOCIAL SCIENCES

COLLEGE OF PERFORMING &  
VISUAL ARTS

COLLEGE OF SCIENCE & ENGINEERING

SCHOOL OF CONTINUING AND  
PROFESSIONAL STUDIES

UNIVERSITY COLLEGE

HONORS PROGRAM

LIBRARY

UGRASP

STUDENT SERVICES

FACULTY SCHOLARLY SUPPORT  
FUND GRANTS

**Dr. Derek W. Hein** presented "Decompositions of Lambda Kn on Stanton-type Graphs: A Small Case" at the MAA Intermountain Section Meeting, Rexburg, ID, April 2013.

**Dr. Derek W. Hein** and Dinesh G. Sarvate (College of Charleston, Charleston, SC) presented "Decompositions of Lambda Kn using Stanton-type Graphs" at The 27th Midwestern Conference on Combinatorics and Combinatorial Computing (MCCCC27), Southwestern University, Georgetown, TX, October 19-20, 2013. This contributed talk contains results obtained during a collaborative research visit to the College of Charleston during the week of May 6-10, 2013. Both of these projects have been funded by the Faculty Scholarly Support Fund at Southern Utah University.

**Dr. Jana Lunt** presented "The Story of Mathematics: Using Definitions in Teaching" at the International Institute for SoTL Scholars and Mentors, Los Angeles, CA, June 2013.

**Dr. Mark Meilstrup**, with J.W. Cannon and A. Zastrow, published "The Period Set of a Map from the Cantor Set to Itself" in *Discrete and Continuous Dynamical Systems-A* 33.7 (2013): 2667-79.

**Dr. Andreas Weingartner** and Roger Baker published "Some Applications of the Double Large Sieve" in *Monatshefte für Mathematik* 170 (2013): 261-304. The authors get new estimates for exponential sums and apply them to problems in number theory.

**Dr. Andreas Weingartner**, Roger Baker, W.D. Banks, J. Brüdern, and I. Shparlinski published "Piatetski-Shapiro Sequences" in *Acta Arithmetica* 157.1 (2013): 37-68.

## Nursing

### Publications and Presentations

**Dr. Donna Lister** presented "Learning Nursing: Perspectives of Practicing Nurses" at the SUU Festival of Excellence, April 9, 2013.

**Professor Claudia Kreipl** presented "Effect of Therapeutic Touch on PTSD clients" at the SUU Festival of Excellence, April 9, 2013.

**Professor Rebecca Rasmussen** and **Professor Shelley Sanderson** presented a poster on "Using Popular Culture as a Creative Teaching Strategy" at the Nurse Educators: On a Journey of Excellence conference in Philadelphia, PA. The conference was hosted by Villanova College of Nursing, 25 October 2012.

**Dr. Cynthia Wright** presented "Using Online Video Demonstrations in a Culinary Arts Class" at the SUU Festival of Excellence, April 9, 2013.

### Awards

**Dr. Donna J. A. Lister** completed her PhD November 25, 2012, after successful defense of her dissertation "Perspectives of Practicing Registered Nurses on the Importance of Learning Experiences in Nursing School" at Walden University.



SPRING 2014 • VOLUME 3 • ISSUE 1

INTRODUCTION

COMMUNITY ENGAGEMENT CENTER

CREATIVE ENGAGEMENT CENTER

OUTDOOR ENGAGEMENT CENTER

LEADERSHIP ENGAGEMENT CENTER

GLOBAL ENGAGEMENT CENTER

SCHOOL OF BUSINESS

COLLEGE OF EDUCATION & HUMAN  
DEVELOPMENT

COLLEGE OF HUMANITIES &  
SOCIAL SCIENCES

COLLEGE OF PERFORMING &  
VISUAL ARTS

COLLEGE OF SCIENCE & ENGINEERING

SCHOOL OF CONTINUING AND  
PROFESSIONAL STUDIES

UNIVERSITY COLLEGE

HONORS PROGRAM

LIBRARY

UGRASP

STUDENT SERVICES

FACULTY SCHOLARLY SUPPORT  
FUND GRANTS

## Physical Science

### Publications and Presentations

**Dr. Bruce Howard** presented "Novel Therapeutics" at the SUU Festival of Excellence, April 9, 2013.

**Dr. C. Frederick Lohrengel** and **Dr. Paul R. Larson** published "Determining Atmospheric Pressure Using a Water Barometer" in *The Physics Teacher* 50 (2012): 563-565.

**Dr. C. Frederick Lohrengel** and **Dr. Paul R. Larson** presented "A New, More Accurate Climate Map for Utah" at the SUU Festival of Excellence, April 9, 2013.

**Dr. Jonny S. MacLean** presented "Quantitatively Assessing Academic Rigor in Experiential Education: A Pilot Study in the Green River Area" at the SUU Festival of Excellence, April 9, 2013.

**Dr. Nathan Werner** and student Stephan Maman presented "Chemical Modification to Identify and Maximize the Anticancer Activity of Theaflavins from Black Tea" at the SUU Festival of Excellence, April 9, 2013.

### Projects

**Dr. Johnny S. MacLean** led the Geology 4000 students (Selected Field Trips) on a Spring Break field trip to Labyrinth Canyon. Ten geology students and two outdoor recreation in parks and tourism students accompanied Dr. MacLean. The five-day trip was designed to give students real-world experience in classroom topics. Further details can be found via SUU News: <http://www.suunews.com/news/2013/mar/20/geology-class-paddles-down-green-river/>

**Dr. Nathan Werner** attended the Southern Utah University Teaching Academy and the Red Rocks Great Teaching Retreat to enrich my pedagogy. He also completed a certification for on-line instruction at SUU. In addition, he initiated 3 new cutting-edge research projects with four SUU students. Together they are studying the (1) Synthesis of antibiotics for the treatment of Gram-negative pathogens, (2) Semisynthetic modification of anticancer polyphenols, and (3) The preparation of phosphine ligands for use in transition-metal catalyzed reactions.

**Dr. MacKay Steffensen** and **Dr. Daniel Eves**, along with faculty from Snow College and University of Utah, have been developing curriculum for the Technology Intensive Concurrent Enrollment (TICE) Chemistry 1110, Elementary Chemistry.



**Geology Club members paddle on the Green River in Labyrinth Canyon during Spring Break**

Dean: Mark Atkinson

Website: <http://www.suu.edu/scps/>



R. Haze Hunter Conference Center

### College Highlights

In 2013-14, SUU will offer more online learning courses, to incorporate the load of other universities that will no longer serve Southern Utah. This will require greater adoption of synchronous communication technologies (web-based), such as web conferencing and televideo.

SCPS began administering the Bachelor of General Studies (BGS) in September. The Director of SUU Online will act as the initial point of contact for prospective students, while the University College provides advising.

# SCHOOL OF CONTINUING & PROFESSIONAL STUDIES

## Publications and Presentations

**Dr. Mark Atkinson** presented "Video Game Experience Effects on Transactional Distance Gap of Learners in 3-D" at the AECT (Association for Educational Communication and Technology), Anaheim, CA, November 2013.

**Bob Goodman** (Associate Coordinator, ESL program) attended the International TESOL conference, Dallas, TX, March 2013.

**Dr. Karl Stevens** published "Contributing Factors to a Successful Course Development Process" in *The Journal of Continuing Higher Education* 62.1 (2013): 2-11.

**Dr. Karl Stevens** presented on Margin Theory at the University Professional & Continuing Education Association's Region West conference in Tucson, AZ, in October 2013. His topic focused on the amount of responsibility we place on our students in relation to what resources we provide them to bear up that burden. Subsequently, he published an article on the same topic on EvolLLLution.com, an online higher education news outlet, titled "A Gallon of Milk or a Degree?" The text can be found here: <http://www.evolllution.com/opinions/gallon-milk-degree/>

**Dr. Andrea Stiefvater** (coordinator, ESL program) and **Bob Goodman** attended the TESOL national conference in Dallas, TX, March 2013.

**Mindy Young**, an instructor in the ESL program, presented "Empirical Study of the Theatrical Approach to Language Learning (T.A.L.L.)" at the TESOL National Conference, in Dallas, TX, March 2013. Her session demonstrated how a theatrical pedagogy can dramatically improve English learning experience and effectiveness. It explained the theoretical foundation and showed the step-by-step process, in addition to providing guidelines and support materials so the audience can try T.A.L.L. in their own classrooms.

SUU  
SUMMIT

ONLINE

SPRING 2014 • VOLUME 3 • ISSUE 1

INTRODUCTION

COMMUNITY ENGAGEMENT CENTER

CREATIVE ENGAGEMENT CENTER

OUTDOOR ENGAGEMENT CENTER

LEADERSHIP ENGAGEMENT CENTER

GLOBAL ENGAGEMENT CENTER

SCHOOL OF BUSINESS

COLLEGE OF EDUCATION & HUMAN  
DEVELOPMENT

COLLEGE OF HUMANITIES &  
SOCIAL SCIENCES

COLLEGE OF PERFORMING &  
VISUAL ARTS

COLLEGE OF SCIENCE & ENGINEERING

SCHOOL OF CONTINUING AND  
PROFESSIONAL STUDIES

UNIVERSITY COLLEGE

HONORS PROGRAM

LIBRARY

UGRASP

STUDENT SERVICES

FACULTY SCHOLARLY SUPPORT  
FUND GRANTS



SPRING 2014 • VOLUME 3 • ISSUE 1

INTRODUCTION

COMMUNITY ENGAGEMENT CENTER

CREATIVE ENGAGEMENT CENTER

OUTDOOR ENGAGEMENT CENTER

LEADERSHIP ENGAGEMENT CENTER

GLOBAL ENGAGEMENT CENTER

SCHOOL OF BUSINESS

COLLEGE OF EDUCATION & HUMAN  
DEVELOPMENT

COLLEGE OF HUMANITIES &  
SOCIAL SCIENCES

COLLEGE OF PERFORMING &  
VISUAL ARTS

COLLEGE OF SCIENCE & ENGINEERING

SCHOOL OF CONTINUING AND  
PROFESSIONAL STUDIES

UNIVERSITY COLLEGE

HONORS PROGRAM

LIBRARY

UGRASP

STUDENT SERVICES

FACULTY SCHOLARLY SUPPORT  
FUND GRANTS

Dean: Patrick Clarke

Website: <http://www.suu.edu/uc/>



Sharwan Smith Student Center

### College Highlights

University College Dean Dr. Patrick Clarke and Director of Global Engagement Dr. Kurt Harris worked in partnership with Dr. Patricia Keehley, the Director of Masters of Public Administration, to design and implement the first graduate level study abroad program at SUU: <http://suu.edu/news/2013/08/mpa-in-the-u.k.--graduate-studies-across-the-pond.html>

University College, led by the academic advising team, in partnership with the College of Science and Engineering designed and implemented 13 Science Learning Communities wherein students were cohorted together in

# UNIVERSITY COLLEGE

## Presentations and Publications

Associate Dean **Jeb Branin** was invited to give the keynote address, "Creativity at the Pinnacle of Success," at the 2013 Utah Advising and Orientation Association Conference at Snowbird Resort.

**Jeb Branin** (Associate Dean) was the moderator of SUU's Raft Debate Convocation, involving **Professor Ellen Treanor** (Professional-in-Residence, Communications), **Professor Mary Pearson** (Accounting), **Dr. Shawn Christiansen** (Chair, Family and Consumer Science), **Professor Peter Sham** (Associate Chair, Theater Arts and Dance), **Dr. Ty Redd** (Chair, Physical Sciences), **Dr. Kyle Bishop** (Chair, English).

**Andrea Donovan** (HSS Academic Advisor) and Taynya Blackhorse (Northern Ute/ Navajo Community Educator) presented "Indigenous-Led Mentorship: Social Justice Social Work Innovations in a Rural, Conservative Environment" at the Canadian Association for Social Work Education Annual National Conference held in conjunction with the Canadian Federation for the Humanities and Social Sciences, Victoria, British Columbia, Canada, June 2013. The presentation was on collaborative social justice-based retention initiative that supports Indigenous students at SUU who experience greater barriers to educational attainment and a linked disproportionate attrition rates in higher education. Andrea is a member of an interdisciplinary/interdepartmental and cross-agency team at SUU comprised of members from various student services and the Paiute Indian Tribe of Utah, the presentation highlights our collaborative work at SUU. The presentation specifically foregrounded recent work on campus policy designed to address attrition in marginalized groups. This work is not being done at any other university in Utah at this point.

This was a significant opportunity to demonstrate and to deepen leadership from SUU. The Canadian Association for Social Work Education (CASWE) is a partnered association recognized by the Council for Higher Education Accreditation and the only accrediting agency for social work in Canada. Andrea's advising duties frequently include working with students who are interested in social justice social work. Participating in this conference deepened her ability to provide referrals and current information. Her participation in this conference supported her to contribute to SUU partnerships with community agencies such as The Paiute Indian Tribe of Utah, as well as with other social service agencies SUU frequently partners with for student service learning and internship initiatives and opportunities linked with departments across campus and the EDGE Program.



SPRING 2014 • VOLUME 3 • ISSUE 1

INTRODUCTION

COMMUNITY ENGAGEMENT CENTER

CREATIVE ENGAGEMENT CENTER

OUTDOOR ENGAGEMENT CENTER

LEADERSHIP ENGAGEMENT CENTER

GLOBAL ENGAGEMENT CENTER

SCHOOL OF BUSINESS

COLLEGE OF EDUCATION & HUMAN  
DEVELOPMENT

COLLEGE OF HUMANITIES &  
SOCIAL SCIENCES

COLLEGE OF PERFORMING &  
VISUAL ARTS

COLLEGE OF SCIENCE & ENGINEERING

SCHOOL OF CONTINUING AND  
PROFESSIONAL STUDIES

UNIVERSITY COLLEGE

HONORS PROGRAM

LIBRARY

UGRASP

STUDENT SERVICES

FACULTY SCHOLARLY SUPPORT  
FUND GRANTS

6-12 credits worth of courses directly related to their majors. Cohort registration ensures that students can get into the classes they need during the appropriate semester and helps eliminate bottlenecks in required courses. This also allows students to build a strong sense of community as they study with the same students in multiple classes and affords the advisors and instructors the ability to introduce programs and activities for the group. The program has drawn praise from nationally recognized higher education consultants (for more information, see the College of Science highlights).

**Katya Konkle** (Academic Advisor) and Brittney Hernandez presented “Off the Beaten Path: Developmental Advising in Prescriptive Majors” at 2013 Annual Utah Advising and Orientation Association Conference, Snowbird Resort, Utah, May 2013.

**Katya Konkle** (Academic Advisor) presented “Creating an Advising Manual from Scratch” at the 2013 Annual Utah Advising and Orientation Association Conference, Snowbird Resort, Utah, May 2013.

#### Awards

**Lindsay Fullerton** received the Academic Partnership Award from the Utah Humanities Council at their Human Ties Celebration, July 2013 in SLC, UT. This award is for the work done with the Venture Program.



**Tawny Caldwell, a senior graphic design major, completed her EDGE requirements by collaborating a student from North Elementary School, and other volunteers to transform a paper-sized painting into a life-sized mural.**





SPRING 2014 • VOLUME 3 • ISSUE 1

INTRODUCTION

COMMUNITY ENGAGEMENT CENTER

CREATIVE ENGAGEMENT CENTER

OUTDOOR ENGAGEMENT CENTER

LEADERSHIP ENGAGEMENT CENTER

GLOBAL ENGAGEMENT CENTER

SCHOOL OF BUSINESS

COLLEGE OF EDUCATION & HUMAN  
DEVELOPMENT

COLLEGE OF HUMANITIES &  
SOCIAL SCIENCES

COLLEGE OF PERFORMING &  
VISUAL ARTS

COLLEGE OF SCIENCE & ENGINEERING

SCHOOL OF CONTINUING AND  
PROFESSIONAL STUDIES

UNIVERSITY COLLEGE

HONORS PROGRAM

LIBRARY

UGRASP

STUDENT SERVICES

FACULTY SCHOLARLY SUPPORT  
FUND GRANTS

Director: Professor Matt Nickerson

Website: <http://www.suu.edu/honors/>

# Honors Program

## Presentations and Publications

In April 2013, Honors Director **Matt Nickerson** and **Dr. Kyle Bishop** (English) escorted 12 honors students to the Western Regional Honors Conference in Flagstaff, AZ. **Dr. Bishop** presented "30 Days of Experiential Education".

## Projects

In February 2013, Honors Director **Matt Nickerson** and **Dr. Briget Eastep**, Outdoor Engagement Center Director, escorted honors students from across the country on the annual overnight trip to the Cedar Breaks Yurt.

The Honors Program co-hosted the annual TEDxSUU event in conjunction with the Center for Creativity and Innovation. Held in the Sterling Church Auditorium, the night featured SUU faculty, SUU Students and members of the community. Presenters included: **Prof. Michael Bahr** (Utah Shakespeare Festival, Education Director), **Dr. Kevin Stein** (Communications), **Dr. Helen Boswell** (Biology), and **Dr. Kyle Bishop** (English).

Currently in its 6th year, Partners in the Parks is collaboration between Southern Utah University (SUU) Honors Program and Cedar Breaks National Monument in cooperation with the National Collegiate Honors Council (NCHC). These program leaders organize, support, and facilitate academic adventures throughout the country. Projects are hosted by collegiate honors programs in cooperation with a regional park(s) to offer students week long, in-depth, experiential learning opportunities. Students interact with park rangers and university faculty in both instructional and recreational seminars for park experiences that go well beyond the standard tourist fare. PITP Projects are designed to provide specific and meaningful experiences in the areas of Education, Stewardship, and Recreation. The following professors directed projects over the summer months.

**Professor Matthew Nickerson** and **Dr. Todd Petersen** co-directed the Grand Canyon/Parashant project in May.

**Dr. Johnny MacLean** directed the Sequoia/King's Canyon project in August.

**Dr. Briget Eastep** and **Dr. Jacqueline Grant** co-directed the Great Basin project in August.

## Leadership

Professor **Matthew Nickerson** served as a judge during the annual Shakespeare competition, viewing and critiquing 19 acts by high school students from 5 different states.



**Dr. Johnny MacLean leading the  
2013 Sequoia Partners in the Parks Project**

Dean: John Eye

Website: <http://www.li.suu.edu/>



Gerald R. Sherratt Library

# LIBRARY

## Faculty Publications and Presentations

**Professor Richard Eissinger** and **Professor Scott Lanning** presented "A View from the Trenches" at an SUU LunchBytes, 7 March 2013.

**Dr. John Eye** and **Professor Vik Brown** published "Establishing a Friends of the Library Advisory Board" in *The Bottom Line: Managing Library Finances* 26.1 (2013): 25-30. This article aims to describe how a Friends of the library group was formed to support the collections and services of a small academic library. A case study approach is used to articulate how a friends group can be established to generate revenue for library collections and services. A discussion is used to review concepts supporting how a friends group may be created to provide financial support as well as community outreach and influence. A friends group can not only add financial stability but also bring much needed positive attention toward various elements of the library enterprise. Friends can help manage special projects or exhibits, allowing library staff to focus on other duties. By reaching out to constituents as ambassadors for the library, a friends group can help promote and add value to the library's role and impact in the community.

**Professor Loraly Felix** presented "Introduction to MARC Records and RDA" at the Southwest Utah Media Specialists (SUMS) Conference in Cedar City, UT, February 2013. This presentation provided a general overview of MARC cataloging records as well as a brief summary of the new cataloging Standard RDA and its impact on cataloging in school libraries. Becoming more knowledgeable about MARC records and the new cataloging standards will help school library media specialists perform their cataloging duties more proficiently.

**Professor Loraly Felix** presented "Exploring the Future of Technical Services" at the Utah Library Association, Provo, UT, May 2013. During the past several decades, libraries have moved from a print based environment to one that includes numerous online systems and digital resources. New technology has been the catalyst for many of the changes in libraries, and those transformations have frequently directly impacted Technical Services. This presentation provided an overview about new trends and recent developments such as BISAC Classification, RDA, Patron Driven Acquisitions, and Cloud-based Library Services and considered how they are affecting libraries and more specifically Technical Services staff.

**Professor Stephen Irving** presented "Taking Control of the Big Data in a Digital Age," at the Utah Library Association, Provo, UT, May 2013.

SUU  
SUMMIT

ONLINE

SPRING 2014 • VOLUME 3 • ISSUE 1

INTRODUCTION

COMMUNITY ENGAGEMENT CENTER

CREATIVE ENGAGEMENT CENTER

OUTDOOR ENGAGEMENT CENTER

LEADERSHIP ENGAGEMENT CENTER

GLOBAL ENGAGEMENT CENTER

SCHOOL OF BUSINESS

COLLEGE OF EDUCATION & HUMAN  
DEVELOPMENT

COLLEGE OF HUMANITIES &  
SOCIAL SCIENCES

COLLEGE OF PERFORMING &  
VISUAL ARTS

COLLEGE OF SCIENCE & ENGINEERING

SCHOOL OF CONTINUING AND  
PROFESSIONAL STUDIES

UNIVERSITY COLLEGE

HONORS PROGRAM

LIBRARY

UGRASP

STUDENT SERVICES

FACULTY SCHOLARLY SUPPORT  
FUND GRANTS



SPRING 2014 • VOLUME 3 • ISSUE 1

INTRODUCTION

COMMUNITY ENGAGEMENT CENTER

CREATIVE ENGAGEMENT CENTER

OUTDOOR ENGAGEMENT CENTER

LEADERSHIP ENGAGEMENT CENTER

GLOBAL ENGAGEMENT CENTER

SCHOOL OF BUSINESS

COLLEGE OF EDUCATION & HUMAN  
DEVELOPMENT

COLLEGE OF HUMANITIES &  
SOCIAL SCIENCES

COLLEGE OF PERFORMING &  
VISUAL ARTS

COLLEGE OF SCIENCE & ENGINEERING

SCHOOL OF CONTINUING AND  
PROFESSIONAL STUDIES

UNIVERSITY COLLEGE

HONORS PROGRAM

LIBRARY

UGRASP

STUDENT SERVICES

FACULTY SCHOLARLY SUPPORT  
FUND GRANTS

**Professor Scott Lanning** and **Professor Phil Roche** presented “Determinants of Success in an Online Information Literacy Course” at the Utah Library Association Annual Conference, Provo, UT, May 2103.

This presentation examined the statistical information gathered from two analyses of LM 1010 classes. The first analysis looked at external factors that contribute to student success in an online class, like ACT scores and school districts. The second analysis examined internal factors of the online course to determine what added in student success in the class, like time spent viewing the course, and number of emails sent to the professor.

**Professor Verlene Schafer** presented “All the Bells and Whistler’s Mother: Tips and Tricks to Fully Using EBSCOhost” at Southern Utah Educators Conference (SUECON), St. George, UT, 2013. This presentation gives educators and librarians a better understanding of some of the underused tools available in EBSCOhost databases. This presentations helps attendees become familiar with searching an EBSCOhost database, reviews various databases that are age appropriate for elementary, junior high and high school students, and the option of searching multiple databases at one time. Also covered are creating accounts to preserve searches and articles using the folder option, creating personalized folders and sharing folders. It also covers creating journal alerts for notifications when the latest copy of a specific journal becomes available.

**Professor Verlene Schafer** presented “The Re-education of Administration: What Administrators Need to Know about the Role of Libraries, Librarians, and Information Literacy” at the Utah Library Association Conference in Provo, UT, May 2013. Library media programs can sometime be undervalued by administration because they don’t understand the many roles librarians fill as well as the importance of information literacy in academic success and in the role of being a lifelong learner who uses information wisely. Using Southern Utah University’s LM Program curriculum as a framework a review of each course will highlight the roles that librarians fill that administrators need to know about, and appreciate in order for the library to be properly staffed, the space used effectively, and for information literacy to be a part of the regular school curriculum as well as a lifelong skill. Courses include: collection development, cataloging, technology, reference, literature, management and instruction, and practical experience. This presentation will help librarians develop strategies to advocate for their programs and their classroom space with in-house administration and can be applied to district administrators or even city and state level for library support as well as collaboratively when working with other teachers.

### Awards

**Professor Janet Seegmiller** received the 2013 Charles Redd Center for Western Studies Award for publication of “Selling the Scenery: Chauncey and Gronway Parry and the Birth of Utah’s Tourism and Movie Industries” in *Utah Historical Quarterly*, Summer 2012. She received the award at the Utah State History Annual Conference, Salt Lake City, UT, September 2013.

### Projects

The Sherratt Library was invited by the Union Pacific Railroad to provide a photograph display for their 150th anniversary celebration in Salt Lake City on July 24th. The photographs are from our Special Collections photograph collection and were on exhibit in the Grand Hall of the Union Pacific Depot. University Archivist **Paula Mitchell** represented the Library, meeting with visitors and answering their questions about the historic photographs on display. The photographs were associated with Union Pacific’s role in the early settlement of Cedar City and southern Utah, and provided a striking backdrop for the anniversary celebration.



SPRING 2014 • VOLUME 3 • ISSUE 1

INTRODUCTION

COMMUNITY ENGAGEMENT CENTER

CREATIVE ENGAGEMENT CENTER

OUTDOOR ENGAGEMENT CENTER

LEADERSHIP ENGAGEMENT CENTER

GLOBAL ENGAGEMENT CENTER

SCHOOL OF BUSINESS

COLLEGE OF EDUCATION & HUMAN  
DEVELOPMENT

COLLEGE OF HUMANITIES &  
SOCIAL SCIENCES

COLLEGE OF PERFORMING &  
VISUAL ARTS

COLLEGE OF SCIENCE & ENGINEERING

SCHOOL OF CONTINUING AND  
PROFESSIONAL STUDIES

UNIVERSITY COLLEGE

HONORS PROGRAM

LIBRARY

UGRASP

STUDENT SERVICES

FACULTY SCHOLARLY SUPPORT  
FUND GRANTS

### National Library Week

National Library Week is celebrated every year in April. This year the Library sponsored two events. The first Librarylympics was held which consisted of a series of online, Facebook and live events that students participated to win prizes. A total of 50 contestants entered and student Michael Thompson won the grand prize of a Kindle Fire while Kedrik Hamblin and Shari Skougaard received Kindle Readers as runners-up. The event helped generate more usage of our online portals and library facility.

The second event was a library reception, sponsored jointly by the Library and the Friends of the Sherratt Library for local public and school librarians. The evening began with welcomes by Dean John Eye, and Chair of the Friends, Clayton Petty. Phil Roché gave a brief demonstration on how to access the Iron County Record online and then Janet Seegmiller conducted a tour of Special Collections. Though attendance was sparse, those who were there felt they were richly rewarded for their attendance.

### The Sky is an Open Vault: A Presentation of Student Poetry

The Library hosted an evening of readings of original poetry by Danielle Dubrasky's students. The readings were inspired by students' travels to the local mountains this past summer where they created poems based upon their stargazing experiences. Art work inspired by the poems was also on display for those in attendance to view. The poems and art work were displayed along the walls in the Garden Level throughout the semester. (February –April 2013)

### North Elementary Project Koha Project

This year an opportunity presented itself during Spring semester. North Elementary, a local elementary school, to help implement a new cataloging system called Koha. The school library had three book collections all in different check-out systems. The recataloging to the Koha system now enables them to catalog their take-home library and allows those items in their collections to be searched by subject and title for increased circulation. Previously there was not way to tell what was available, who had checked it out, or when it was due. Teachers can now search online and see what materials are available at a glance rather than coming to the library and combing through shelves of books. The Library and North Elementary were grateful to have the help of various volunteers most notably Penny Brown and Lorraine Warren, both members of the Friends of the Library, and Chris Haught from SCDC who helped train staff in the Koha system and volunteered several hours herself. We are looking forward to working with other schools in Iron Country School District adapt the Koha program too. Since this program is web-based, it is a possibility that we could work with ICSD to create an interlibrary loan program to improve shared resources between schools.



*"I Am Coming Home"*

written by **Wendell Hickman McGarry**

Director: Dr. Paul Spruell

Website: <http://suu.edu/ugrasp/>



Bennion Administration Building

# UNDERGRADUATE RESEARCH & SCHOLARSHIP PROGRAM

*“The Undergraduate Research and Scholarship Program (UGRASP) at Southern Utah University is committed to fostering a community of scholars across all disciplines. As part of its mission, the program will encourage and support student-mentor collaborations in research and creative expression, preparing students to become the scholars, scientists, and leaders of tomorrow.”*

With national participation in undergraduate research reaching an all-time high, SUU is taking a leadership role by including research as a major emphasis in its new academic roadmap. The Undergraduate Research and Scholarship Program (UGRASP) eagerly anticipates the many ways in which students might best be served by the program.

Perhaps the most direct contribution of UGRASP is to provide funding for undergraduate research and scholarship conduction and dissemination. Grant awards of up to \$500 are available to students from all disciplines across campus.

Another highlight of the yearly activities of UGRASP includes the annual Utah Conference on Undergraduate Research (UCUR) in the spring, this year held at Utah State University in February. Based off the prestigious National Conference on Undergraduate Research, UCUR is a statewide conference dedicated to the dissemination of student research and creative activity. This year Brigham Young University will be hosting the state-wide event. UGRASP will cover all expenses for students who present at this conference.

UGRASP will also co-host the Festival of Excellence at SUU in February.



SPRING 2014 • VOLUME 3 • ISSUE 1

- INTRODUCTION
- COMMUNITY ENGAGEMENT CENTER
- CREATIVE ENGAGEMENT CENTER
- OUTDOOR ENGAGEMENT CENTER
- LEADERSHIP ENGAGEMENT CENTER
- GLOBAL ENGAGEMENT CENTER
- SCHOOL OF BUSINESS
- COLLEGE OF EDUCATION & HUMAN DEVELOPMENT
- COLLEGE OF HUMANITIES & SOCIAL SCIENCES
- COLLEGE OF PERFORMING & VISUAL ARTS
- COLLEGE OF SCIENCE & ENGINEERING
- SCHOOL OF CONTINUING AND PROFESSIONAL STUDIES
- UNIVERSITY COLLEGE
- HONORS PROGRAM
- LIBRARY
- UGRASP
- STUDENT SERVICES
- FACULTY SCHOLARLY SUPPORT FUND GRANTS



SPRING 2014 • VOLUME 3 • ISSUE 1

INTRODUCTION

COMMUNITY ENGAGEMENT CENTER

CREATIVE ENGAGEMENT CENTER

OUTDOOR ENGAGEMENT CENTER

LEADERSHIP ENGAGEMENT CENTER

GLOBAL ENGAGEMENT CENTER

SCHOOL OF BUSINESS

COLLEGE OF EDUCATION & HUMAN  
DEVELOPMENT

COLLEGE OF HUMANITIES &  
SOCIAL SCIENCES

COLLEGE OF PERFORMING &  
VISUAL ARTS

COLLEGE OF SCIENCE & ENGINEERING

SCHOOL OF CONTINUING AND  
PROFESSIONAL STUDIES

UNIVERSITY COLLEGE

HONORS PROGRAM

LIBRARY

UGRASP

STUDENT SERVICES

FACULTY SCHOLARLY SUPPORT  
FUND GRANTS

Interim Vice President: Dr. Stephen Allen

Website: <http://www.suu.edu/ss/vp/>



SUU's circle of Omicron Delta Kappa, the national leadership honor society, gives a donation to The Canyon Creek Women's Crisis Center located in Cedar City

### College Highlights

The 174 Southern Utah University Student Association (SUUSA) clubs on campus contributed 1,642 approved service hours during 2013, including a Paint the Town Red event in August 2013 (co-sponsored with Cedar City and the Downtown Retail Alliance) that drew over 2,500 students to Cedar City's historic main street.

SUUSA and the Michael O. Leavitt Center for Politics and Public Service participated in the Count My Vote program and petition for removal of the caucus system in Utah. In addition, the Leavitt Center scheduled and sponsored 74 from August-November 2013, with over 7,000 attendees.

# Student Services

## Presentations and Publications

**Dr. Curtis Hill** (Director of Counseling and Psychological Services) and **Blaine Edwards**, CMHC, presented "Growing a Group Program: Success Achieved and Lessons Learned" at the Utah University College counseling Center Conference, Park City, UT, 1. Nov. 2013. Over the last twelve years Southern Utah University (SUU) has developed a robust and successful group program. Moving from essentially no group counseling available to successfully supporting up to nine groups each semester. This presentation used a timeline format to report on the many challenges and successes that our center has experienced over the years. Topics included staff contribution, recruiting participants, establishing a referral and orientation system, overcoming scheduling concerns, developing physical facilities, collaboration with other entities on campus, and training for group therapists.

**Dr. Curtis Hill** (Director of Counseling and Psychological Services) and Dr. Kawika Allen presented "Current Attitudes about Counseling and Collaboration between LDS Religious Leaders and Mental Health Therapists in the Rural West" at the Utah University College counseling Center Conference, Park City, UT, 1. Nov. 2013. Little research has examined potential barriers in the collaboration process between mental health therapists and Latter-day Saint (LDS) religious leaders. This study sought to examine perceptions LDS religious leaders and mental health therapists have of each other and of the collaboration process. Using both quantitative and qualitative methods, researchers discovered that mental health therapists are more open to collaborating with religious leaders than religious leaders are with mental health practitioners. Misunderstanding the role of a therapist in the developmental process was a common theme and barrier for religious leaders when considering a referral for mental health services. Other barriers included; both therapists and religious leaders tended to mistrust each other, religious leaders hoped for quick symptom relief when referring a member of their congregation and became frustrated when that did not occur, therapists worry that LDS religious leaders lack training and competence when mental health issues are present. Researchers suggested that mental health counselors may be more effective in working with religious leaders if they did a better job of clarifying their values and goals for therapy.



SPRING 2014 • VOLUME 3 • ISSUE 1

INTRODUCTION

COMMUNITY ENGAGEMENT CENTER

CREATIVE ENGAGEMENT CENTER

OUTDOOR ENGAGEMENT CENTER

LEADERSHIP ENGAGEMENT CENTER

GLOBAL ENGAGEMENT CENTER

SCHOOL OF BUSINESS

COLLEGE OF EDUCATION & HUMAN  
DEVELOPMENT

COLLEGE OF HUMANITIES &  
SOCIAL SCIENCES

COLLEGE OF PERFORMING &  
VISUAL ARTS

COLLEGE OF SCIENCE & ENGINEERING

SCHOOL OF CONTINUING AND  
PROFESSIONAL STUDIES

UNIVERSITY COLLEGE

HONORS PROGRAM

LIBRARY

UGRASP

STUDENT SERVICES

FACULTY SCHOLARLY SUPPORT  
FUND GRANTS

In October, **Jared Hallows** (Financial Aid and Scholarships) presented “Algorithmic Budgeting in Banner” at the Cohesion Summit conference in Salt Lake City. Powerful automation of period-based budgeting can be produced for the financial aid office using algorithmic budgeting. This presentation offered a quick overview (with step-by-step instructions) on how to set up and use period budgeting.

### Leadership

**Kirk Blake** (Assistant Director of Admissions) is President-Elect for the Utah Council, an organization of admissions professionals from the state of Utah with the interest of promoting Utah higher education opportunities to the state’s population.

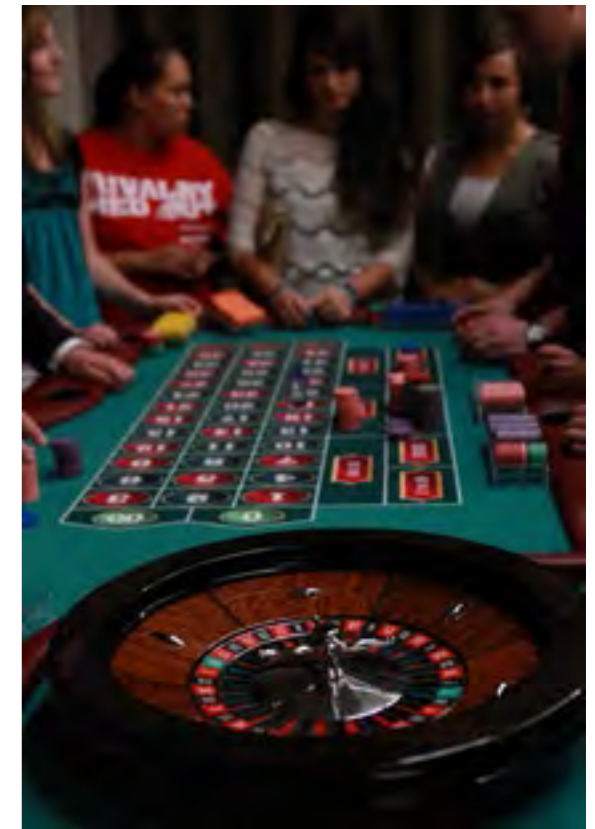
**Liz Wallis** (Admissions) will be serving as co-chair for the UACRAO (Utah Association of Collegiate Registrars and Admissions Officers) annual conference to be held at SUU in June 2014.

**Keri Mecham** (Director of Student Involvement and Leadership) served as President/President-elect of the Utah Professionals of Student Involvement and Leadership (UPSIL) from Summer 2011-13. Her responsibilities included planning and coordination of 4 professional conferences and two student conferences, lead committee, brought in keynote speakers and presenters, budget, etc. She was also a Workshop Facilitator at the Utah Leadership Academy (May 2013).

### Awards

**John Shafer**, Student Support Services Academic Coordinator, was awarded the highest recognition for TRIO personnel at the October ASPIRE-TRIO Conference in Ft Collins CO. The Art Quinn Memorial Award is the most prestigious award ASPIRE presents each year. The award recipient is selected by the Executive Board and is based on the following criteria: The recipient is an ASPIRE member or retiree who has worked in TRiO for ten years or more; has excelled in providing services and or support to TRiO and or ASPIRE at the local, state, or regional levels; and demonstrates an unselfish and sincere desire to assist students beyond the general expectations of the project guidelines. John has served 8 years as ASPIRE treasurer and was re-elected to this office at the last meeting.

The **Student Support Center** and **Center for Women and Families** are delighted to be awarded a four year CCAMPIS grant from the US Department of Education. Child Care Access Means Parents In School (CCAMPIS) is funded \$129,000 per year to assist low income parents with child care costs. This assistance is available to both undergraduate and graduate students attending SUU. Please visit with the Center for Women and Families for more information and application forms for spring 2014.



Students attending “Casino Night”, an annual event sponsored by The Student Activities Board and Freshman Board



SPRING 2014 • VOLUME 3 • ISSUE 1

- INTRODUCTION
- COMMUNITY ENGAGEMENT CENTER
- CREATIVE ENGAGEMENT CENTER
- OUTDOOR ENGAGEMENT CENTER
- LEADERSHIP ENGAGEMENT CENTER
- GLOBAL ENGAGEMENT CENTER
- SCHOOL OF BUSINESS
- COLLEGE OF EDUCATION & HUMAN DEVELOPMENT
- COLLEGE OF HUMANITIES & SOCIAL SCIENCES
- COLLEGE OF PERFORMING & VISUAL ARTS
- COLLEGE OF SCIENCE & ENGINEERING
- SCHOOL OF CONTINUING AND PROFESSIONAL STUDIES
- UNIVERSITY COLLEGE
- HONORS PROGRAM
- LIBRARY
- UGRASP
- STUDENT SERVICES
- FACULTY SCHOLARLY SUPPORT FUND GRANTS

# Faculty Scholarly Support Fund Grant

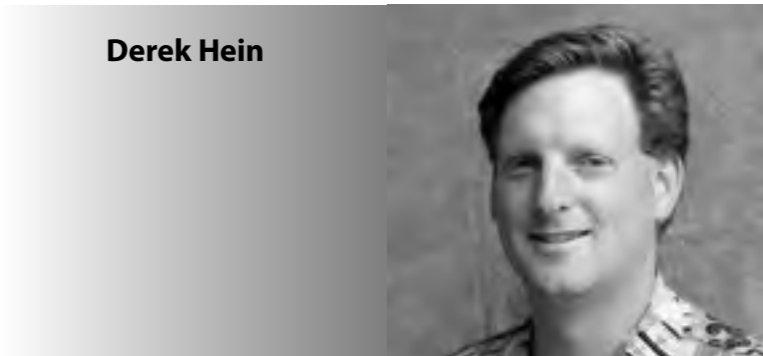
Congratulations to the following faculty on being awarded grants for their research, presentations, and other special projects. For more information go to <http://www.suu.edu/academics/provost/pfdvl/>

## April 2013 Grant Cycle

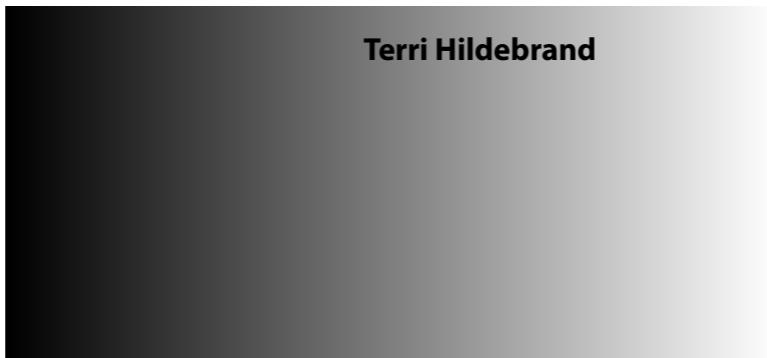
### Walter Maxwell Gibson College of Science and Engineering



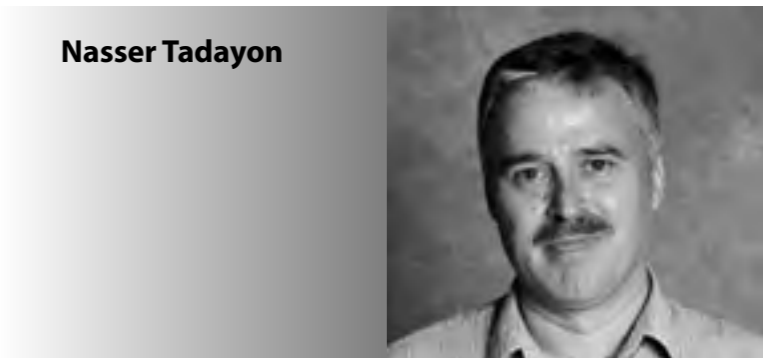
**Richard Cozzens**



**Derek Hein**



**Terri Hildebrand**



**Nasser Tadayon**





SPRING 2014 • VOLUME 3 • ISSUE 1

- INTRODUCTION
- COMMUNITY ENGAGEMENT CENTER
- CREATIVE ENGAGEMENT CENTER
- OUTDOOR ENGAGEMENT CENTER
- LEADERSHIP ENGAGEMENT CENTER
- GLOBAL ENGAGEMENT CENTER
- SCHOOL OF BUSINESS
- COLLEGE OF EDUCATION & HUMAN DEVELOPMENT
- COLLEGE OF HUMANITIES & SOCIAL SCIENCES
- COLLEGE OF PERFORMING & VISUAL ARTS
- COLLEGE OF SCIENCE & ENGINEERING
- SCHOOL OF CONTINUING AND PROFESSIONAL STUDIES
- UNIVERSITY COLLEGE
- HONORS PROGRAM
- LIBRARY
- UGRASP
- STUDENT SERVICES
- FACULTY SCHOLARLY SUPPORT FUND GRANTS



**Andreas Weingartner**



**Cynthia Wright**

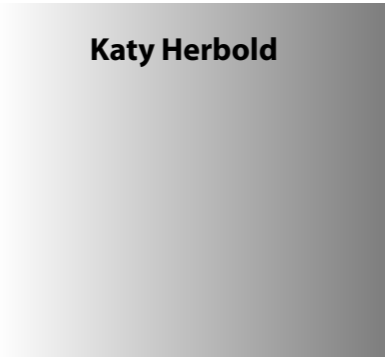


**Dezhi Wu**

**Beverly Taylor Sorenson College of Education and Human Development**



**Bruce Barker**



**Katy Herbold**





SPRING 2014 • VOLUME 3 • ISSUE 1

- INTRODUCTION
- COMMUNITY ENGAGEMENT CENTER
- CREATIVE ENGAGEMENT CENTER
- OUTDOOR ENGAGEMENT CENTER
- LEADERSHIP ENGAGEMENT CENTER
- GLOBAL ENGAGEMENT CENTER
- SCHOOL OF BUSINESS
- COLLEGE OF EDUCATION & HUMAN DEVELOPMENT
- COLLEGE OF HUMANITIES & SOCIAL SCIENCES
- COLLEGE OF PERFORMING & VISUAL ARTS
- COLLEGE OF SCIENCE & ENGINEERING
- SCHOOL OF CONTINUING AND PROFESSIONAL STUDIES
- UNIVERSITY COLLEGE
- HONORS PROGRAM
- LIBRARY
- UGRASP
- STUDENT SERVICES
- FACULTY SCHOLARLY SUPPORT FUND GRANTS

**College of Humanities and Social Sciences**



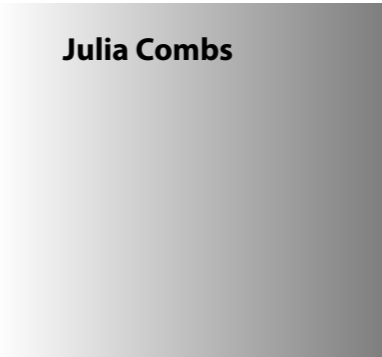
**Matt Barton**



**Kyle Bishop**



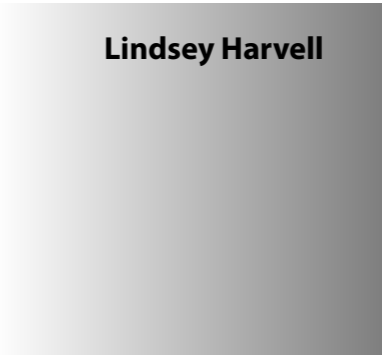
**Bryce Christensen**



**Julia Combs**



**Danielle Dubrasky**



**Lindsey Harvell**



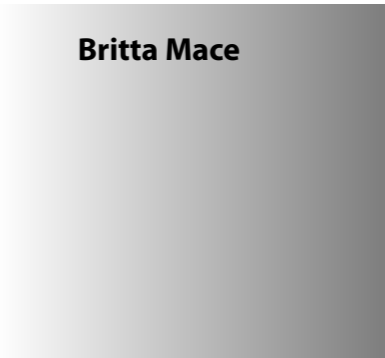


SPRING 2014 • VOLUME 3 • ISSUE 1

- INTRODUCTION
- COMMUNITY ENGAGEMENT CENTER
- CREATIVE ENGAGEMENT CENTER
- OUTDOOR ENGAGEMENT CENTER
- LEADERSHIP ENGAGEMENT CENTER
- GLOBAL ENGAGEMENT CENTER
- SCHOOL OF BUSINESS
- COLLEGE OF EDUCATION & HUMAN DEVELOPMENT
- COLLEGE OF HUMANITIES & SOCIAL SCIENCES
- COLLEGE OF PERFORMING & VISUAL ARTS
- COLLEGE OF SCIENCE & ENGINEERING
- SCHOOL OF CONTINUING AND PROFESSIONAL STUDIES
- UNIVERSITY COLLEGE
- HONORS PROGRAM
- LIBRARY
- UGRASP
- STUDENT SERVICES
- FACULTY SCHOLARLY SUPPORT FUND GRANTS



**Paul Husselbee**



**Britta Mace**



**Mark Miller**



**Pat Paystrup**



**Charla Strosser**



SPRING 2014 • VOLUME 3 • ISSUE 1

INTRODUCTION  
COMMUNITY ENGAGEMENT CENTER  
CREATIVE ENGAGEMENT CENTER  
OUTDOOR ENGAGEMENT CENTER  
LEADERSHIP ENGAGEMENT CENTER  
GLOBAL ENGAGEMENT CENTER  
SCHOOL OF BUSINESS  
COLLEGE OF EDUCATION & HUMAN DEVELOPMENT  
COLLEGE OF HUMANITIES & SOCIAL SCIENCES  
COLLEGE OF PERFORMING & VISUAL ARTS  
COLLEGE OF SCIENCE & ENGINEERING  
SCHOOL OF CONTINUING AND PROFESSIONAL STUDIES  
UNIVERSITY COLLEGE  
HONORS PROGRAM  
LIBRARY  
UGRASP  
STUDENT SERVICES  
FACULTY SCHOLARLY SUPPORT FUND GRANTS

**College of Performing and Visual Arts**



**Keith Bradshaw**



**Jeffrey Hanson**



**James Marchant**



**Andrew Marvick**



**Shauna Mendini**

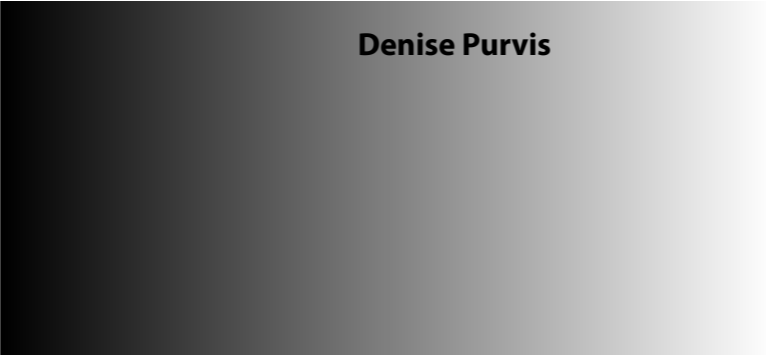


**Paul Ocampo**



SPRING 2014 • VOLUME 3 • ISSUE 1

- INTRODUCTION
- COMMUNITY ENGAGEMENT CENTER
- CREATIVE ENGAGEMENT CENTER
- OUTDOOR ENGAGEMENT CENTER
- LEADERSHIP ENGAGEMENT CENTER
- GLOBAL ENGAGEMENT CENTER
- SCHOOL OF BUSINESS
- COLLEGE OF EDUCATION & HUMAN DEVELOPMENT
- COLLEGE OF HUMANITIES & SOCIAL SCIENCES
- COLLEGE OF PERFORMING & VISUAL ARTS
- COLLEGE OF SCIENCE & ENGINEERING
- SCHOOL OF CONTINUING AND PROFESSIONAL STUDIES
- UNIVERSITY COLLEGE
- HONORS PROGRAM
- LIBRARY
- UGRASP
- STUDENT SERVICES
- FACULTY SCHOLARLY SUPPORT FUND GRANTS



**Denise Purvis**



**Brian Swanson**



**Dr. Lynn Vartan**



**Don Weingust**

**Library**



**Loralyn Felix**



**Steven Irving**



SPRING 2014 • VOLUME 3 • ISSUE 1

- INTRODUCTION
- COMMUNITY ENGAGEMENT CENTER
- CREATIVE ENGAGEMENT CENTER
- OUTDOOR ENGAGEMENT CENTER
- LEADERSHIP ENGAGEMENT CENTER
- GLOBAL ENGAGEMENT CENTER
- SCHOOL OF BUSINESS
- COLLEGE OF EDUCATION & HUMAN DEVELOPMENT
- COLLEGE OF HUMANITIES & SOCIAL SCIENCES
- COLLEGE OF PERFORMING & VISUAL ARTS
- COLLEGE OF SCIENCE & ENGINEERING
- SCHOOL OF CONTINUING AND PROFESSIONAL STUDIES
- UNIVERSITY COLLEGE
- HONORS PROGRAM
- LIBRARY
- UGRASP
- STUDENT SERVICES
- FACULTY SCHOLARLY SUPPORT FUND GRANTS



**Scott Lanning**



**Verlene Schafer**

## FSSF Grants September 2013 Grant Cycle

### School of Business



**Wayne Roberts**



**Emmett Steed**



**Tyler Stillman**



SPRING 2014 • VOLUME 3 • ISSUE 1

INTRODUCTION  
 COMMUNITY ENGAGEMENT CENTER  
 CREATIVE ENGAGEMENT CENTER  
 OUTDOOR ENGAGEMENT CENTER  
 LEADERSHIP ENGAGEMENT CENTER  
 GLOBAL ENGAGEMENT CENTER  
 SCHOOL OF BUSINESS  
 COLLEGE OF EDUCATION & HUMAN DEVELOPMENT  
 COLLEGE OF HUMANITIES & SOCIAL SCIENCES  
 COLLEGE OF PERFORMING & VISUAL ARTS  
 COLLEGE OF SCIENCE & ENGINEERING  
 SCHOOL OF CONTINUING AND PROFESSIONAL STUDIES  
 UNIVERSITY COLLEGE  
 HONORS PROGRAM  
 LIBRARY  
 UGRASP  
 STUDENT SERVICES  
 FACULTY SCHOLARLY SUPPORT FUND GRANTS

**Walter Maxwell Gibson College of Science and Engineering**



**Jennifer Hargrave**



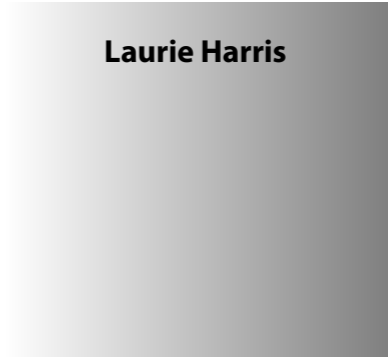
**Cecily Heiner**



**Laurie Mauger**



**Matt Schmidt**



**Laurie Harris**



**Johnny MacLean**



**Chris Monson**



**Randall Violett**



SPRING 2014 • VOLUME 3 • ISSUE 1

- INTRODUCTION
- COMMUNITY ENGAGEMENT CENTER
- CREATIVE ENGAGEMENT CENTER
- OUTDOOR ENGAGEMENT CENTER
- LEADERSHIP ENGAGEMENT CENTER
- GLOBAL ENGAGEMENT CENTER
- SCHOOL OF BUSINESS
- COLLEGE OF EDUCATION & HUMAN DEVELOPMENT
- COLLEGE OF HUMANITIES & SOCIAL SCIENCES
- COLLEGE OF PERFORMING & VISUAL ARTS
- COLLEGE OF SCIENCE & ENGINEERING
- SCHOOL OF CONTINUING AND PROFESSIONAL STUDIES
- UNIVERSITY COLLEGE
- HONORS PROGRAM
- LIBRARY
- UGRASP
- STUDENT SERVICES
- FACULTY SCHOLARLY SUPPORT FUND GRANTS

**Beverly Taylor Sorenson College of Education and Human Development**



**Tom Cunningham**



**Kim Mendenhall**

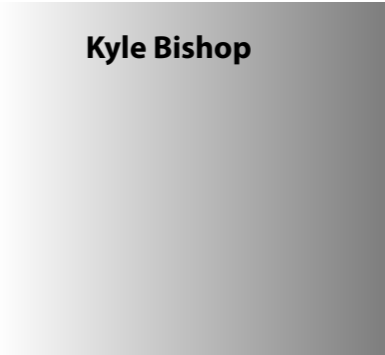


**Nichole Wangsgard**

**College of Humanities and Social Sciences**



**Lisa Arter**



**Kyle Bishop**







SPRING 2014 • VOLUME 3 • ISSUE 1

INTRODUCTION  
 COMMUNITY ENGAGEMENT CENTER  
 CREATIVE ENGAGEMENT CENTER  
 OUTDOOR ENGAGEMENT CENTER  
 LEADERSHIP ENGAGEMENT CENTER  
 GLOBAL ENGAGEMENT CENTER  
 SCHOOL OF BUSINESS  
 COLLEGE OF EDUCATION & HUMAN DEVELOPMENT  
 COLLEGE OF HUMANITIES & SOCIAL SCIENCES  
 COLLEGE OF PERFORMING & VISUAL ARTS  
 COLLEGE OF SCIENCE & ENGINEERING  
 SCHOOL OF CONTINUING AND PROFESSIONAL STUDIES  
 UNIVERSITY COLLEGE  
 HONORS PROGRAM  
 LIBRARY  
 UGRASP  
 STUDENT SERVICES  
 FACULTY SCHOLARLY SUPPORT FUND GRANTS



**Bryce Christensen**



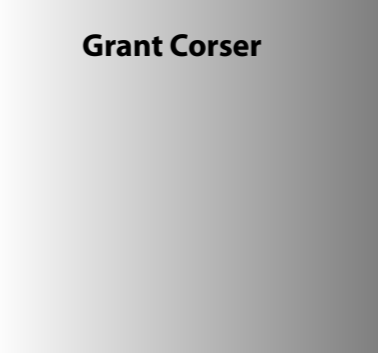
**Emily Dean**



**Todd Petersen**



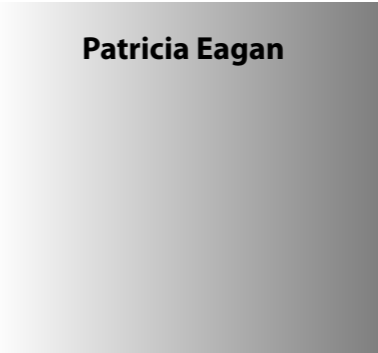
**Joy Sterrantino**



**Grant Corser**



**Patricia Eagan**



**Jennifer Sorensen**



**Charla Strosser**

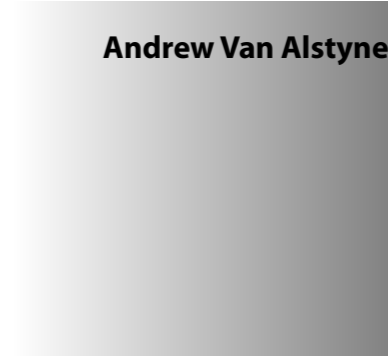


SPRING 2014 • VOLUME 3 • ISSUE 1

INTRODUCTION  
 COMMUNITY ENGAGEMENT CENTER  
 CREATIVE ENGAGEMENT CENTER  
 OUTDOOR ENGAGEMENT CENTER  
 LEADERSHIP ENGAGEMENT CENTER  
 GLOBAL ENGAGEMENT CENTER  
 SCHOOL OF BUSINESS  
 COLLEGE OF EDUCATION & HUMAN DEVELOPMENT  
 COLLEGE OF HUMANITIES & SOCIAL SCIENCES  
 COLLEGE OF PERFORMING & VISUAL ARTS  
 COLLEGE OF SCIENCE & ENGINEERING  
 SCHOOL OF CONTINUING AND PROFESSIONAL STUDIES  
 UNIVERSITY COLLEGE  
 HONORS PROGRAM  
 LIBRARY  
 UGRASP  
 STUDENT SERVICES  
 FACULTY SCHOLARLY SUPPORT FUND GRANTS



**Garrett Strosser**



**Andrew Van Alstyne**



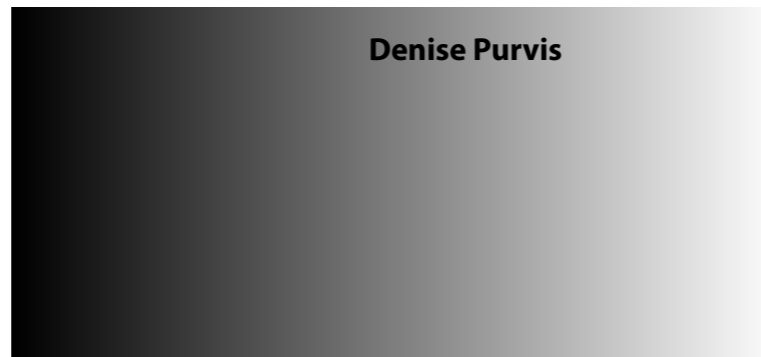
**College of Performing and Visual Arts**



**Keith Bradshaw**



**Jessica Gerlach**



**Denise Purvis**



SPRING 2014 • VOLUME 3 • ISSUE 1

INTRODUCTION  
COMMUNITY ENGAGEMENT CENTER  
CREATIVE ENGAGEMENT CENTER  
OUTDOOR ENGAGEMENT CENTER  
LEADERSHIP ENGAGEMENT CENTER  
GLOBAL ENGAGEMENT CENTER  
SCHOOL OF BUSINESS  
COLLEGE OF EDUCATION & HUMAN  
DEVELOPMENT  
COLLEGE OF HUMANITIES &  
SOCIAL SCIENCES  
COLLEGE OF PERFORMING &  
VISUAL ARTS  
COLLEGE OF SCIENCE & ENGINEERING  
SCHOOL OF CONTINUING AND  
PROFESSIONAL STUDIES  
UNIVERSITY COLLEGE  
HONORS PROGRAM  
LIBRARY  
UGRASP  
STUDENT SERVICES  
FACULTY SCHOLARLY SUPPORT  
FUND GRANTS

**Library**



**Steven Irving**



**Matt Nickerson**



**Verlene Schafer**