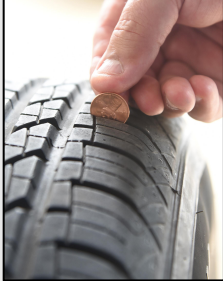


DATE: 08/29/2022

TOOLBOX TALK

WINTER DRIVING



Check tires for proper tread wear, tire pressure, or damage



Increase following distance for bad weather. Normal conditions require at least a 4 second following distance. Add a few seconds during adverse conditions.

Winter driving is the most difficult driving season. Snow and ice can make even the most routine drive dangerous. Before winter weather arrives, make sure your vehicle is in good condition. Keep in mind how you and your vehicle may be affected by the elements and be prepared for emergency situations.

Vehicle Checks

Prior-to-use inspections should be second nature before using any university equipment, including University trucks and vehicles. Preparation for winter weather conditions require more than just a visual inspection.

- Check coolant level
- Check condition and power output of batteries
- Check brakes for wear or damage
- Inspect tires for wear and proper inflation
- Test heater, defroster, and fans for proper operation
- Inspect windshield for cracks, they will expand when glass is heated from inside
- Replace worn windshield wiper blades and check wiper fluid levels

Getting Behind the Wheel

- Clear all ice, snow and dirt off of windows mirrors and lights
- Clear snow from all vehicle surfaces-snow sliding off roof can block windshield
- Know condition of road surface, touch brakes to measure effectiveness
- Reduce speed over bridges; suspended surfaces often freeze before roads
- Anti Lock braking systems (ABS) are only effective when full pressure is applied
- If your vehicle is not equipped with ABS, pump your brakes when stopping to retain steering control
- Use headlights any time there are adverse weather conditions

Pedestrians

- Pedestrian's vision may be compromised by bulky winter clothing or weather
- Snow on cars and plowed piles obstruct driver's view of pedestrians
- Slippery roads present hazards for both drivers and pedestrians

Emergency Preparedness

- Plan ahead! Know your route and anticipate road conditions and road and pedestrian traffic.
- Warm clothing: hat, gloves, coat and boots should be worn or kept in car
- Flashlight with new batteries
- First aid kit
- Small shovel
- Cell phone

**FACILITIES
MANAGEMENT
SAFETY & RISK**

385 South 1275
West Cedar City,
UT 84720
(435) 865-8141