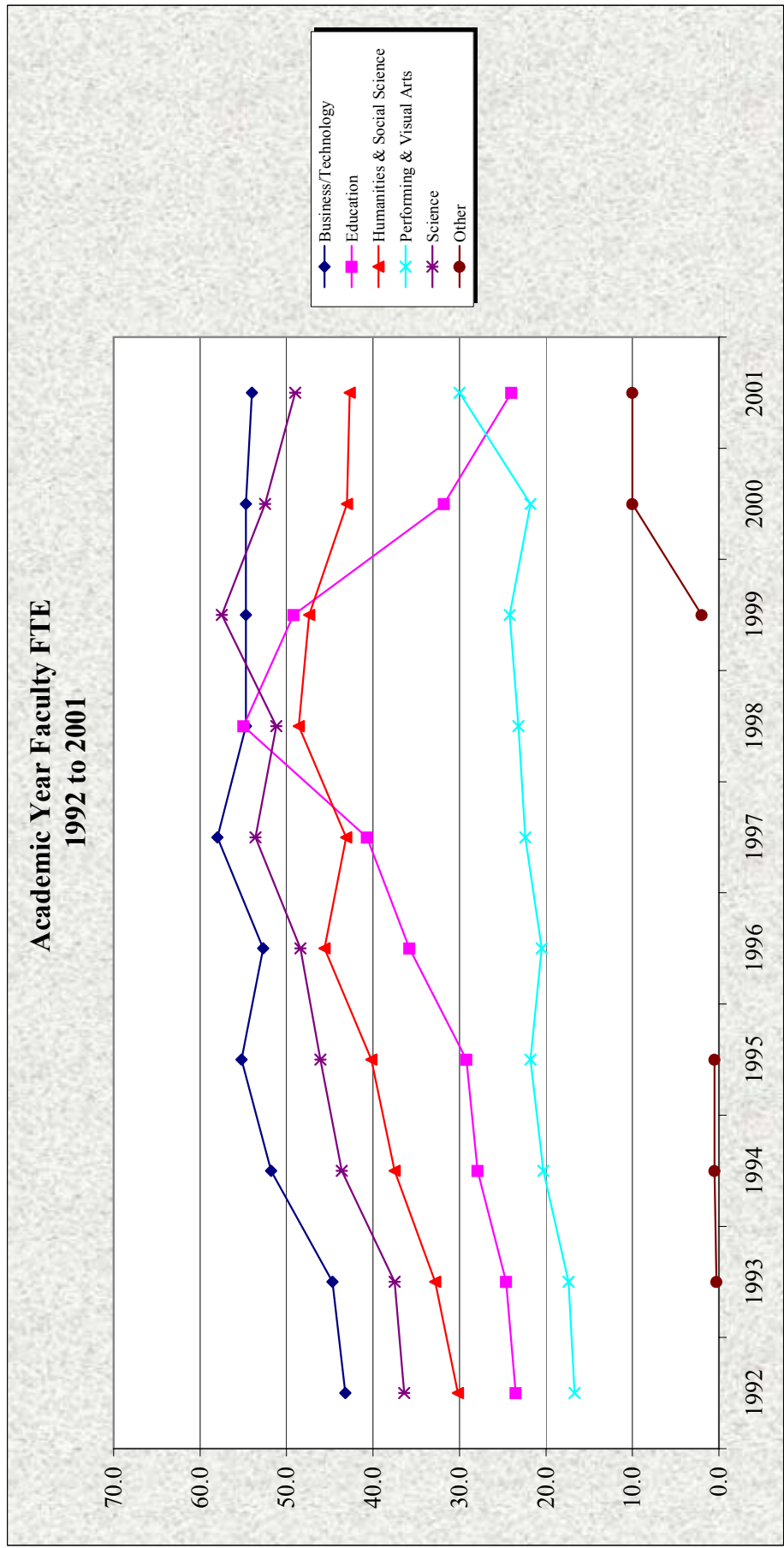


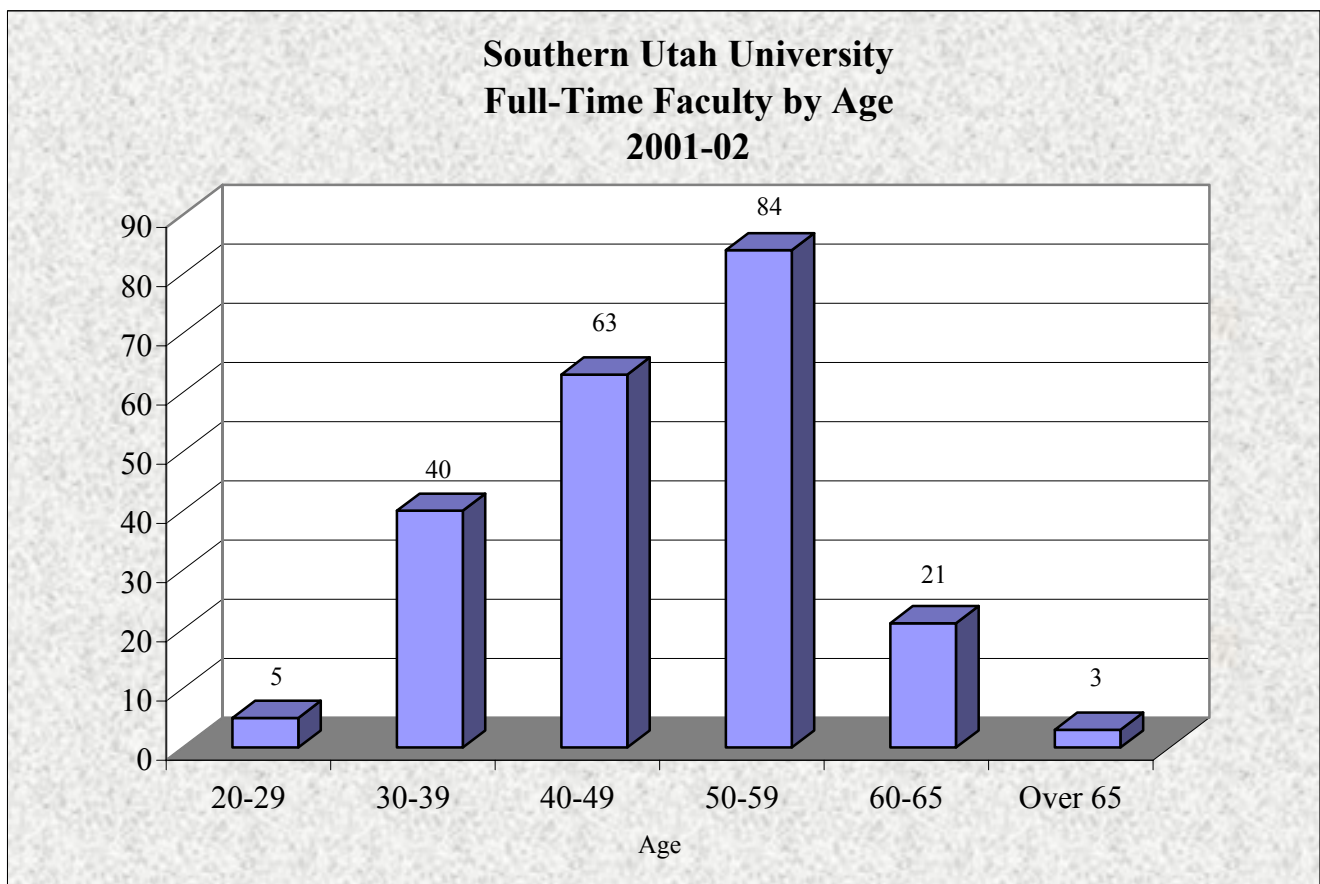
# **Information on Faculty and Staff**

**Southern Utah University  
Academic Year Contract Faculty FTE  
1992 to 2001**

	1992	1993	1994	1995	1996	1997	1998	1999	2000	2001
Business/Technology	43.2	44.7	51.8	55.2	52.7	58.0	54.7	54.7	54.7	54.0
Education	23.5	24.6	27.9	29.2	35.8	40.7	55.0	49.2	31.8	24.0
Humanities & Social Science	30.2	32.8	37.5	40.2	45.6	43.1	48.6	47.4	43.0	42.7
Performing & Visual Arts	16.7	17.4	20.3	21.8	20.5	22.4	23.2	24.2	21.8	30.0
Science	36.4	37.5	43.6	46.1	48.4	53.6	51.2	57.5	52.5	49.0
Other		0.3	0.5	0.5				2.0	10.0	10.0
<b>Total</b>	<b>150.0</b>	<b>157.3</b>	<b>181.6</b>	<b>193.0</b>	<b>203.0</b>	<b>217.8</b>	<b>232.7</b>	<b>235.0</b>	<b>213.8</b>	<b>209.7</b>



Age Group	Number	%
20-29	5	2.3%
30-39	40	18.5%
40-49	63	29.2%
50-59	84	38.9%
60-65	21	9.7%
Over 65	3	1.4%
<b>Total</b>	<b>216</b>	<b>100.0%</b>



Source: SUU Human Resources Records.

**Average Faculty Loads Per Headcount Faculty\***  
1999-00 to 2001-02

	Average Number of Sections Per Headcount Faculty*			Average Number of Credit Hours Taught Per Headcount Faculty*			Average Number of Different Preparations Per Headcount Faculty*		
	1999-00	2000-01	2001-02	1999-00	2000-01	2001-02	1999-00	2000-01	2001-02
	Business	4.2	4.1	3.8	12.0	11.5	9.5	2.7	2.8
Business Education/CIS	4.0	2.9	3.3	11.3	8.2	9.5	3.6	2.8	2.9
Bus., Tech., & Short Term Intensive Training	1.0			4.0			1.0		
Communication	4.1			11.5			2.4		
STIT	1.4	1.5	1.1	4.4	4.6	5.4	1.1	1.1	1.1
Technology	3.8	4.4	3.7	11.8	14.2	11.8	3.2	3.3	3.0
<b>Business</b>	<b>3.8</b>	<b>3.7</b>	<b>3.8</b>	<b>11.0</b>	<b>10.8</b>	<b>10.6</b>	<b>2.7</b>	<b>2.7</b>	<b>2.7</b>
<b>Continuing Education</b>	<b>4.5</b>	<b>9.0</b>	<b>2.5</b>	<b>0.9</b>	<b>1.0</b>	<b>3.0</b>	<b>1.0</b>	<b>1.0</b>	<b>1.0</b>
Physical Education	3.3	3.4	3.2	4.9	5.1	4.5	2.6	2.7	2.6
Teacher Education	4.9	5.3	4.3	14.3	13.6	10.9	2.8	2.9	2.6
<b>Education</b>	<b>4.3</b>	<b>4.5</b>	<b>3.4</b>	<b>10.4</b>	<b>10.1</b>	<b>10.2</b>	<b>2.7</b>	<b>2.8</b>	<b>2.6</b>
<b>General Education</b>	<b>2.5</b>			<b>5.1</b>			<b>1.4</b>		
Communication		4.0	4.0		10.1	10.3		2.3	2.4
Honors		4.5	5.0		9.5	9.0		3.0	4.0
Language and Literature	3.7	4.2	3.9	11.7	13.7	12.4	2.4	2.7	2.6
Psychology	5.2	3.5	5.0	15.6	10.5	15.3	3.2	2.5	3.4
Social Sciences	4.2	4.3	4.6	12.6	12.9	14.3	3.6	3.5	3.4
<b>Humanities and Social Science</b>	<b>4.1</b>	<b>4.1</b>	<b>4.2</b>	<b>12.5</b>	<b>12.0</b>	<b>12.4</b>	<b>2.9</b>	<b>2.8</b>	<b>2.8</b>
Art	3.4	2.8	3.3	10.1	8.1	10.4	2.9	2.3	2.7
Music	5.1	5.5	5.4	10.1	10.5	10.6	4.6	5.3	4.9
Theatre Arts	3.0	3.9	3.6	7.1	9.4	8.7	2.2	2.8	2.6
<b>Performing &amp; Visual Arts</b>	<b>3.8</b>	<b>4.1</b>	<b>4.1</b>	<b>8.7</b>	<b>9.4</b>	<b>9.7</b>	<b>3.1</b>	<b>3.5</b>	<b>3.3</b>
Biology	4.7	5.7	4.9	10.6	12.5	10.9	3.6	4.2	3.5
Family & Consumer Science	7.0	6.6	6.9	14.9	13.9	14.4	3.4	3.7	3.7
Mathematics/Computer Science	3.2	3.5	3.6	11.2	12.3	12.7	2.5	3.0	2.9
Physical Science	6.1	5.9	5.0	11.6	11.8	11.0	4.5	4.4	3.8
<b>Science</b>	<b>5.0</b>	<b>5.3</b>	<b>4.9</b>	<b>11.8</b>	<b>12.5</b>	<b>12.1</b>	<b>3.4</b>	<b>3.8</b>	<b>3.5</b>
<b>University Studies</b>		<b>2.4</b>	<b>4.2</b>		<b>5.6</b>	<b>9.2</b>		<b>1.4</b>	<b>1.7</b>
<b>University</b>	<b>4.1</b>	<b>4.3</b>	<b>4.1</b>	<b>10.7</b>	<b>10.9</b>	<b>10.5</b>	<b>2.9</b>	<b>3.0</b>	<b>2.9</b>

Source: Third-Week Enrollment Report, SUU Registrar's Office.

Note: These data are derived from course information and should not be confused with faculty workload studies or budgeted FTE information.

\*All data are for headcount faculty, not FTE faculty. Hence, even part-time faculty are treated as full-time faculty. Thus, numbers of sections,

**UTAH SYSTEM OF HIGHER EDUCATION  
2002-2003 BUDGET REQUEST  
FORM S-11, Page 1**

Date: 28-Nov-01

Initials: BR

**ANALYSIS OF FACULTY TEACHING WORKLOAD**

INSTITUTION: Southern Utah University

Enter data in green cells only

Fall 2001

**1. FACULTY FTE CENSUS COUNT**

A. Faculty FTEs supported by Appropriated Instructional Funding (See Section 1A of instructions)	190.8
B. Other Faculty FTEs Supported by State Appropriations (See Section 1B of Instructions)	0.0
C. Faculty FTEs Supported with Funds Other than State Appropriations (See Section 1C of instructions)	0.0
D. Total Institutional Faculty (Total of A, B & C above)	190.8

**2. DETAIL OF LINE 1A-- INSTRUCTIONAL FACULTY FTE BY**

**INSTRUCTIONAL LEVEL/BY FACULTY RANK**

----FACULTY RANK----

----INSTRUCTIONAL LEVEL----	(1)	(2)	(3)	(4)	(5)
	FULL PROF	ASSOC PROF	ASST PROF		
A. VOCATIONAL	0.4	9.4	5.4	8.9	24.0
B. LOWER DIVISION	10.4	22.2	22.7	20.2	75.4
C. UPPER DIVISION	9.9	30.1	26.8	15.9	82.7
D. BASIC GRADUATE	0.6	5.5	2.1	0.5	8.6
E. ADVANCED GRADUATE	0.0	0.0	0.0	0.0	0.0
F. TOTAL ALL LEVELS	21.3	67.1	56.9	45.5	190.8

----See Separate Document for Instructions----

Total Faculty Contact Hours 2444.4  
Total Faculty FTE 190.8  
Average Teaching Load per FTE Faculty 12.8

**Number and Source of Highest Degrees of Full-time Tenure-Track Faculty  
2001-2002**

Institution Granting Highest Degree	Number of Degrees			
	Doctor	Master	Bachelor	Total
Academy of Art College-San Francisco		1		1
Arizona State University	7	2		9
Brigham Young University	14	9		23
Colorado State University	2			2
Drake University		1		1
Eastern Kentucky University		1		1
Florida State University		1		1
Indiana State University		1		1
Iowa State University	1			1
Kansas City Conservatory		1		1
Louisiana State University	1			1
Mankato State University		1		1
McGill University	1			1
Michigan State University	1			1
Moscow State Pedagogical University	1			1
National Theatre Conservatory		1		1
New Mexico State University	1			1
New York University		1		1
North Carolina Central University		1		1
Northern Illinois University		1		1
Ohio University	2	1		3
Pennsylvania State University	2			2
Purdue University	3			3
Southern Illinois University	1			1
Southern Utah University		3		3
Southwest Missouri State University		1		1
Spalding University	1			1
St. Cloud State University	1			1
Stanford University		1		1
State University of New York at Buffalo	2	1		3
Syracuse University	1			1
Texas Technical University	3			3
University of Alabama		1		1
University of Arizona	3	2		5
University of British Columbia		1		1
University of California - Davis	3			3
University of California - Santa Barbara	1			1
University of California - Riverside	1			1
University of Colorado	3			3
University of Connecticut		1		1
University of Florida	1			1
University of Georgia	1			1
University of Houston	2			2
University of Illinois - Urbana		1		1
University of Iowa	2			2
University of Kansas	1			1
University of Maine	1			1
University of Michigan	1			1

Source: Provost's Office

**Number and Source of Highest Degrees of Full-time Tenure-Track Faculty  
2001-2002**

Institution Granting Highest Degree	Number of Degrees			
	Doctor	Master	Bachelor	Total
University of Mississippi	2			2
University of Missouri - St. Louis	1			1
University of Nebraska	2			2
University of Nebraska-Lincoln		1		1
University of Nevada - Las Vegas	3			3
University of Nevada - Reno	1			1
University of New Mexico		1		1
University of North Carolina	3			3
University of North Texas	1			1
University of Northern Colorado	2			2
University of Oregon	2	1		3
University of Pittsburgh	2			2
University of Tennessee	2			2
University of Texas	1			1
University of Texas A&M	1			1
University of Tulsa	1			1
University of Utah	16	4		20
University of Washington	1			1
University of Wisconsin-Madison	3			3
University of Wyoming	3			3
Utah State University	12	15		27
Virginia Polytechnical Institute	1			1
Virginia State University		1		1
Washington State University	2			2
Wayne State University		1		1
Wichita State University		1		1
<b>Total</b>	<b>127</b>	<b>60</b>	<b>0</b>	<b>187</b>

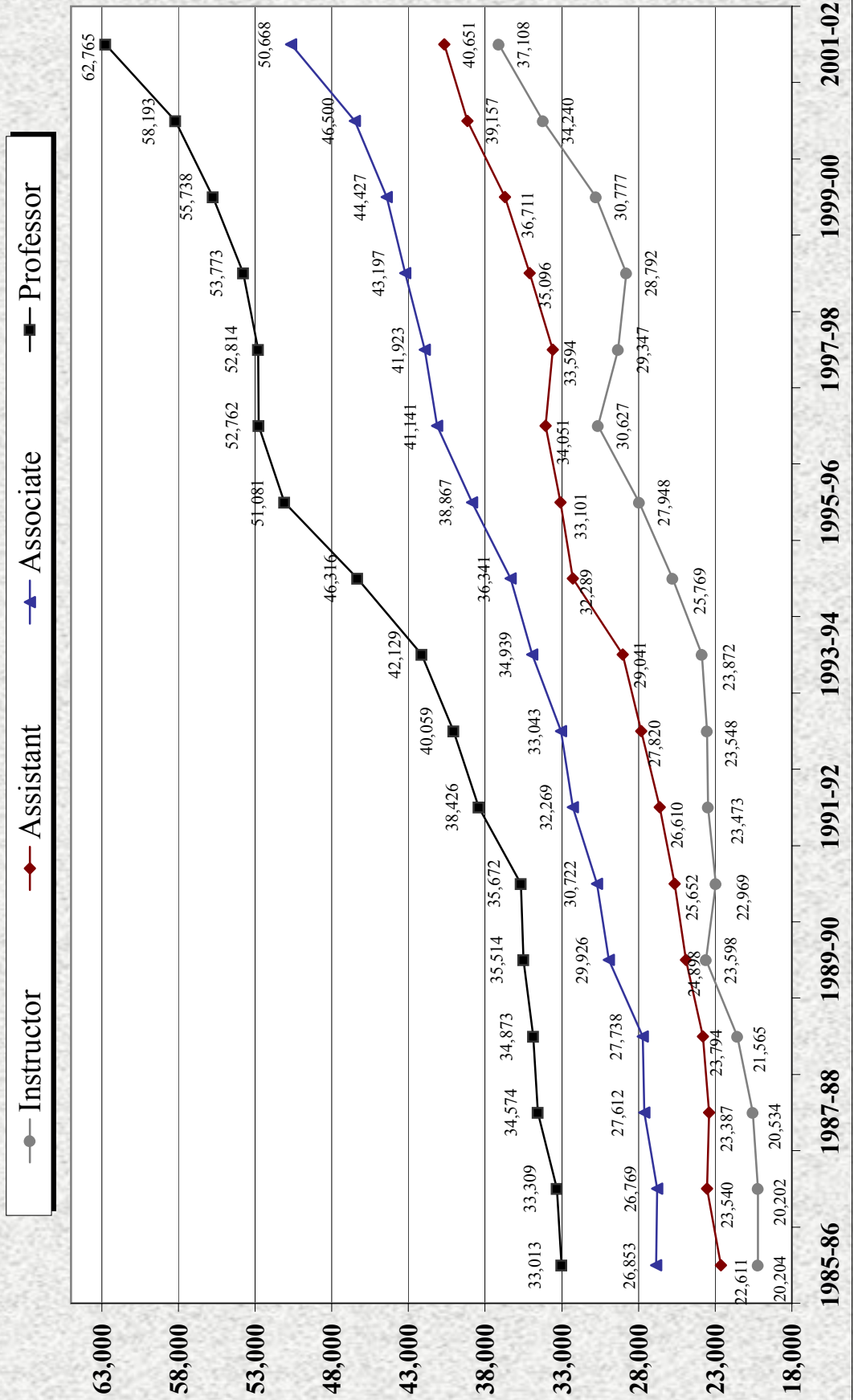
**Distribution of Tenure among Contract Faculty  
1998-99 to 2001-02**

(Excludes academic administration and others in non-teaching positions,  
but includes contract faculty who are in non-tenure-track positions.)

School	#Tenured 1998-99	#Tenured 1999-00	#Tenured 2000-01	#Tenured 2001-02	Total # Faculty 2001-02	2001-02 Tenured Faculty as % of 2001-02 Total Faculty
Business/Technology	30	30	29	22	46	48%
Education	16	14	13	10	30	33%
Library	6	6	6	6	11	55%
Science	26	28	27	24	54	44%
Humanities & Social Science	20	20	19	22	56	39%
Performing & Visual Arts	7	7	9	9	26	35%
<b>Total Tenured</b>	<b>105</b>	<b>105</b>	<b>103</b>	<b>93</b>	<b>223</b>	<b>42%</b>

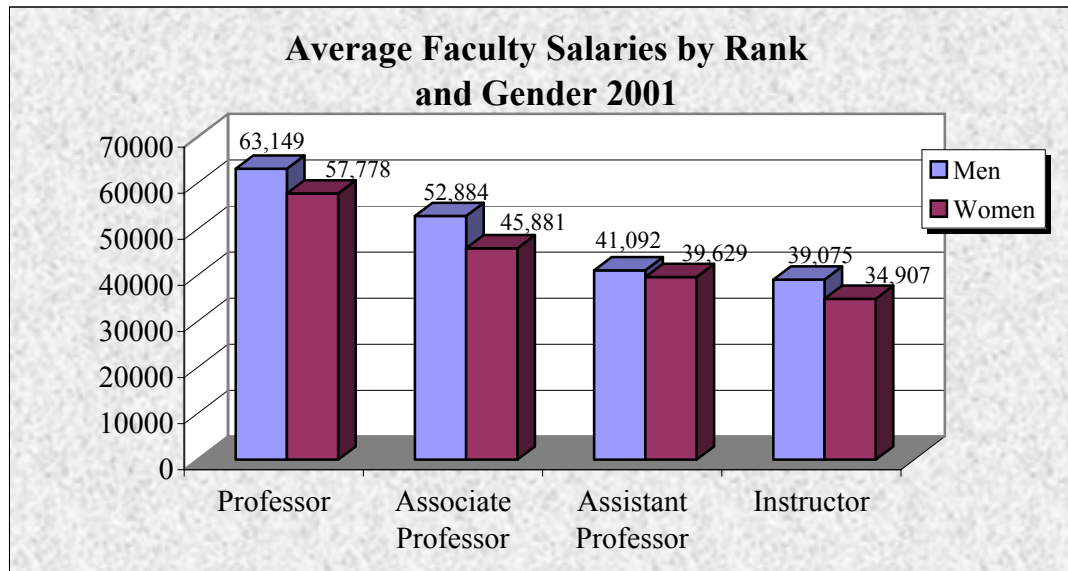


# Average Faculty Salaries by Rank 1985-86 to 2000-01



Source: IPEDS Faculty Salaries Report.  
\* Prior to 2000-01 information obtained from Human Resources Records

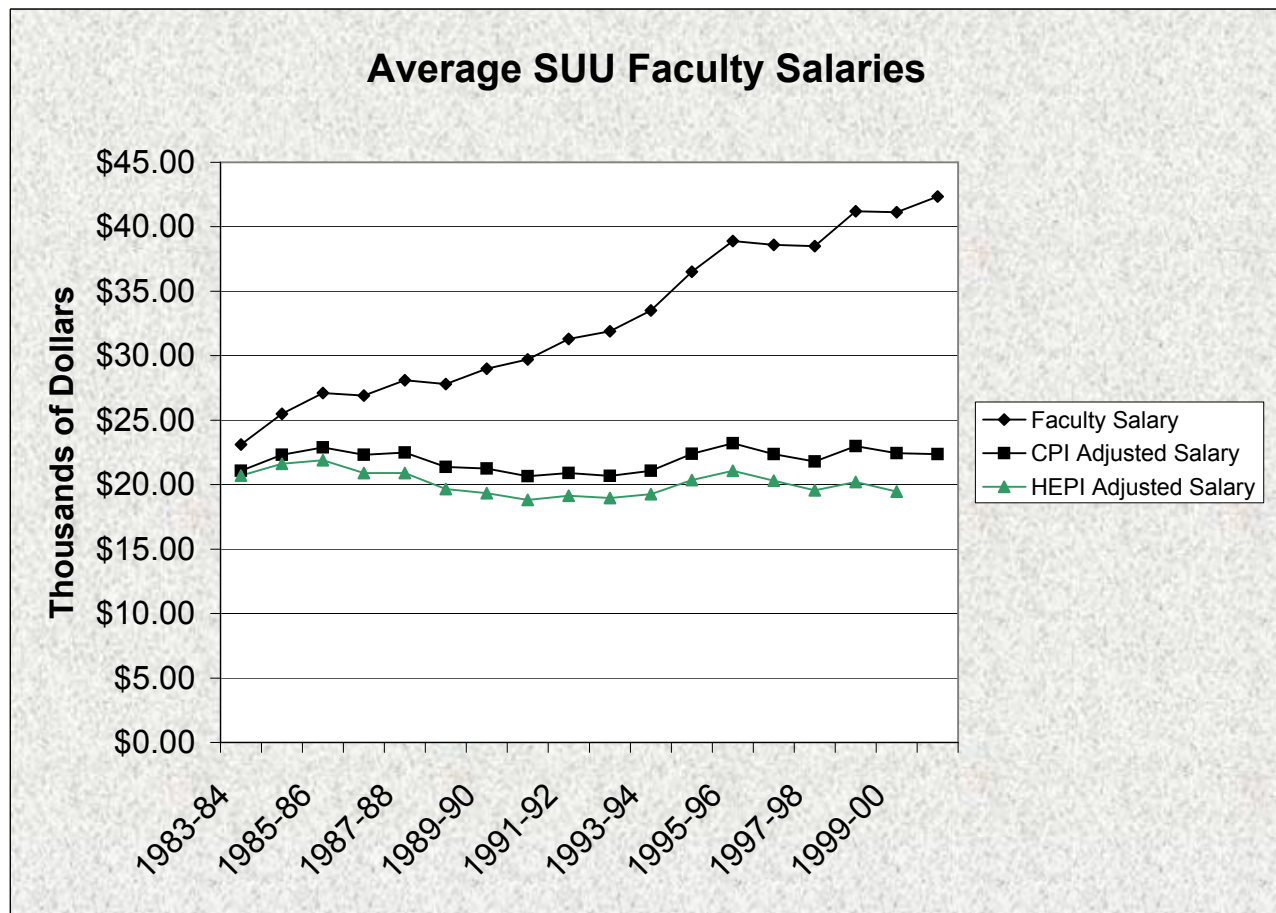
	Men	Women
Professor	\$63,149	\$57,778
Associate Professor	\$52,884	\$45,881
Assistant Professor	\$41,092	\$39,629
Instructor	\$39,075	\$34,907



# Southern Utah University Average Faculty Salaries

1983-84 through 2000-01  
(Dollars in thousands)

Academic Year	Faculty Salary	CPI Adjusted Salary	HEPI Adjusted Salary	HEP Index	Annual Average CPI Index
1981-82	\$22.20	\$22.20	\$22.20	93.9	90.9
1982-83	\$22.90	\$21.57	\$21.50	100.0	96.5
1983-84	\$23.10	\$21.08	\$20.70	104.8	99.6
1984-85	\$25.50	\$22.31	\$21.61	110.8	103.9
1985-86	\$27.10	\$22.89	\$21.88	116.3	107.6
1986-87	\$26.90	\$22.31	\$20.89	120.9	109.6
1987-88	\$28.10	\$22.48	\$20.91	126.2	113.6
1988-89	\$27.80	\$21.36	\$19.66	132.8	118.3
1989-90	\$29.00	\$21.26	\$19.34	140.8	124.0
1990-91	\$29.70	\$20.66	\$18.82	148.2	130.7
1991-92	\$31.30	\$20.89	\$19.15	153.5	136.2
1992-93	\$31.90	\$20.67	\$18.96	158.0	140.3
1993-94	\$33.50	\$21.07	\$19.26	163.3	144.5
1994-95	\$36.50	\$22.39	\$20.36	168.3	148.2
1995-96	\$38.90	\$23.20	\$21.08	173.3	152.4
1996-97	\$38.60	\$22.36	\$20.29	178.6	156.9
1997-98	\$38.50	\$21.80	\$19.55	184.9	160.5
1998-99	\$41.20	\$22.98	\$20.21	191.4	163.0
1999-00	\$41.14	\$22.45	\$19.46	198.5	166.6
2000-01	\$42.35	\$22.36			172.2
2001-02	\$45.79				



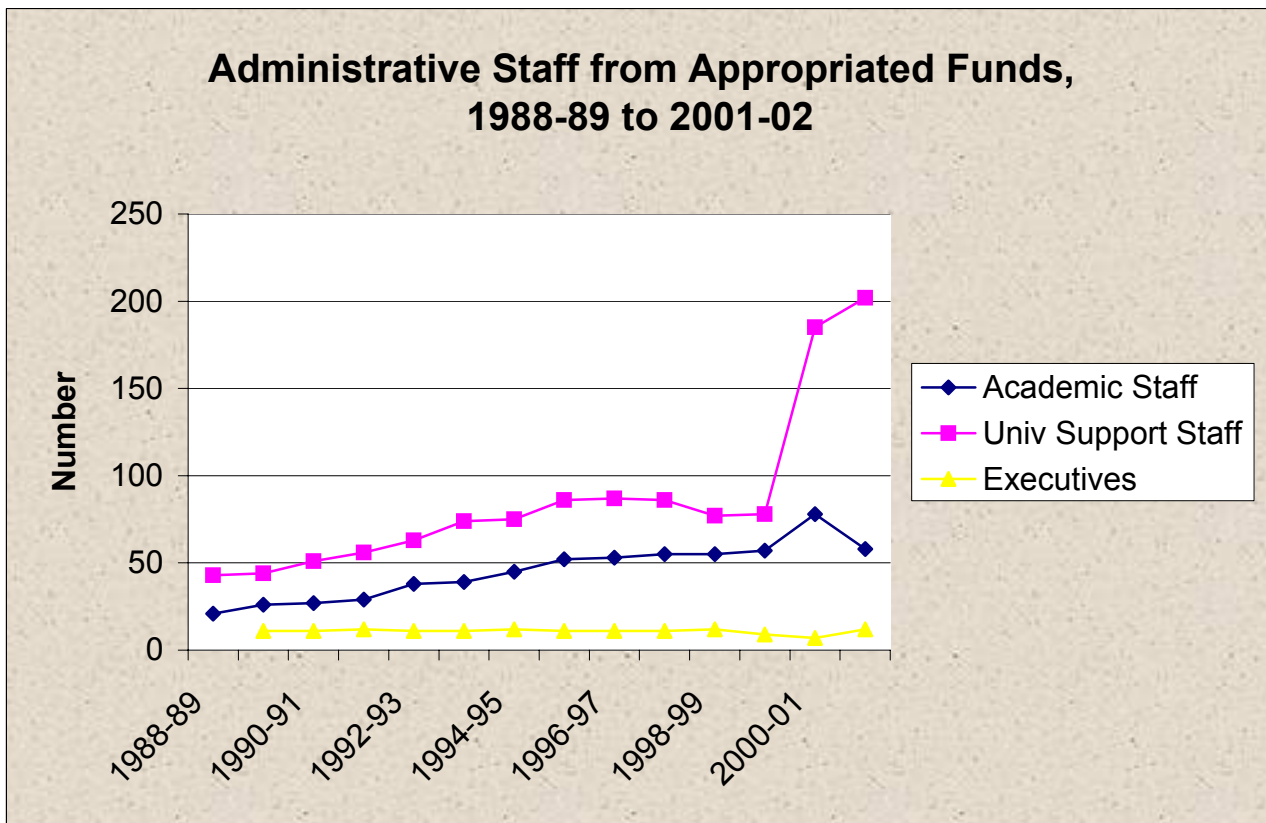
Source: USHE Data Books. SUU Human Resources Office. Data does not reconcile to IPEDS data.  
\*Higher Education Price Index published by Research Associates of Washington  
Salaries adjusted to base year 1981-82

## Administrative Staff from Appropriated Funds

19-Feb-02

(Numbers of Staff Postions)

Year	Academic Staff	Univ Support Staff	Executives
1988-89	21	43	
1989-90	26	44	11
1990-91	27	51	11
1991-92	29	56	12
1992-93	38	63	11
1993-94	39	74	11
1994-95	45	75	12
1995-96	52	86	11
1996-97	53	87	11
1997-98	55	86	11
1998-99	55	77	12
1999-00	57	78	9
2000-01	78	185	7
2001-02	58	202	12



\*The State Board of Regents re-classified executive employees beginning in 2001.

Note: Staff are periodically re-classified to appropriated accounts and within budget classifications.

Source: SUU Human Resources records

**Characteristics of Personnel by Age  
2000-01**

Program	Total	Over 65		60-65		50-59		40-49		30-39		20-29	
	#	#	%	#	%	#	%	#	%	#	%	#	%
Humanities and Social Science	56	0	0.0%	6	10.7%	19	33.9%	12	21.4%	14	25.0%	5	8.9%
Business	42	0	0.0%	6	14.3%	16	38.1%	14	33.3%	6	14.3%	0	0.0%
Education	33	0	0.0%	4	12.1%	15	45.5%	13	39.4%	1	3.0%	0	0.0%
Science	50	2	4.0%	8	16.0%	22	44.0%	9	18.0%	6	12.0%	3	6.0%
Library	10	1	10.0%	1	10.0%	3	30.0%	4	40.0%	1	10.0%	0	0.0%
Performing and Visual Arts	23	1	4.3%	0	0.0%	11	47.8%	5	21.7%	6	26.1%	0	0.0%
Other													
Academic and Admin. Support	404	4	1.0%	24	5.9%	115	28.5%	121	30.0%	86	21.3%	54	13.4%
SUU	618	8	1.3%	49	7.9%	201	32.5%	178	28.8%	120	19.4%	62	10.0%

**Characteristics of Personnel by Length of SUU Service  
2000-01**

Program	Total	0-5 Years		6-10 Years		11-15 Years		16-20 Years		21-25 Years		Over 25 Years	
	#	#	%	#	%	#	%	#	%	#	%	#	%
Humanities and Social Science	56	27	48.2%	7	12.5%	9	16.1%	2	3.6%	2	3.6%	9	16.1%
Business	42	19	45.2%	7	16.7%	10	23.8%	1	2.4%	3	7.1%	2	4.8%
Education	33	16	48.5%	8	24.2%	4	12.1%	1	3.0%	2	6.1%	2	6.1%
Science	50	19	38.0%	11	22.0%	5	10.0%	4	8.0%	1	2.0%	10	20.0%
Library	10	2	20.0%	4	40.0%	1	10.0%	1	10.0%	0	0.0%	2	20.0%
Performing and Visual Arts	23	13	56.5%	6	26.1%	1	4.3%	1	4.3%	1	4.3%	1	4.3%
Other													
Academic and Admin. Support	404	213	52.7%	97	24.0%	40	9.9%	27	6.7%	16	4.0%	11	2.7%
SUU	618	309	50.0%	140	22.7%	70	11.3%	37	6.0%	25	4.0%	37	6.0%

**Characteristics of Full-Time Faculty by Rank and Gender  
2000-01**

Division	Professor		Associate		Assistant		Instructor		Lecturer		Summary	
	Female	Male	Female	Male	Female	Male	Female	Male	Female	Male	Female	Male
Humanities an Social Science	1	13	3	10	3	11	0	0	9	4	16	38
Business	0	4	3	16	2	10	0	3	0	2	5	35
Education	0	2	6	7	7	8	1	0	1	0	15	17
Science	1	13	5	13	2	6	1	0	5	4	14	36
Library	0	0	1	4	1	3	0	0	0	0	2	7
Performing and Visual Arts	0	2	4	5	1	8	0	1	1	0	6	16
<b>University Total</b>	<b>2</b>	<b>34</b>	<b>22</b>	<b>55</b>	<b>16</b>	<b>46</b>	<b>2</b>	<b>4</b>	<b>16</b>	<b>10</b>	<b>58</b>	<b>149</b>

- (1) Faculty on leave of absence are excluded.
- (2) Excludes academic administration and others in non-teaching positions.