

# **SUU Enrollment Statistics**

### SUU 2002 Fall Term Enrollment Statistics

Fall Headcount Enrollment Statistics	Entry Status		Residency		Attendance		Location				Mean Age	Total
	First Time	Returning	Out-of-State	In-State	Full-time	Part-time	On-Campus	St. George	Richfield	Multiple		
<b>Gender</b>												
Female	882	2,410	292	3,000	2,460	832	3,215	26	31	20	23.7	3,292
Male	657	1,932	229	2,360	2,036	553	2,574	10	0	5	24.3	2,589
<b>Ethnicity</b>												
American Indian or Alaskan Native	21	47	2	66	53	15	68	0	0	0	25.7	68
Asian	14	89	68	35	94	9	103	0	0	0	22.3	103
Black	7	27	10	24	27	7	34	0	0	0	24.6	34
Hispanic	31	71	17	85	84	18	101	0	0	1	23.7	102
Native Hawaiian or Pacific Islander	4	21	5	20	20	5	24	1	0	0	22.2	25
Other	3	16	3	16	14	5	19	0	0	0	25.2	19
White	1,406	4,013	392	5,027	4,118	1,301	5,332	34	30	23	24.0	5,419
Unspecified	53	58	24	87	86	25	108	1	1	1	23.6	111
												<b>5,881</b>
<b>Citizenship</b>												
USA-Citizen	1,529	4,249	445	5,333	4,406	1,372	5,688	35	31	24	24.0	5,778
Nonresident	10	93	76	27	90	13	101	1	0	1	24.5	103
<b>Attendance</b>												
Full-time	1,366	3,130	482	4,014	4,496	0	4,466	16	3	11	22.3	4,496
Part-time	173	1,212	39	1,346	0	1,385	1,323	20	28	14	29.3	1,385
<b>Student Level</b>												
New Freshmen	949	0	141	808	905	44	949	0	0	0	19.5	949
Other Freshmen	138	1,066	98	1,106	520	684	1,183	7	12	2	24.6	1,204
Sophomore	159	863	123	899	882	140	1,008	1	11	2	22.5	1,022
Junior	197	853	73	977	925	125	1,041	0	3	6	23.5	1,050
Senior	48	1,407	78	1,377	1,216	239	1,425	17	5	8	26.2	1,455
Graduate	39	115	8	146	46	108	139	9	0	6	33.9	154
Graduate (non-matriculated)	9	38	0	47	2	45	44	2	0	1	41.7	47

## 2002 Fall Term Demographic Statistics

Fall Headcount Demographic Statistics	Gender		Ethnicity							Total	
	Female	Male	Amer Ind Alaskan	Asian	Black	Hispanic	Hawaiian/ Pac Islander	Other	White		Unspec
<b>Gender</b>											
Female	3,292		43	54	13	56	10	8	3,058	50	3,292
Male		2,589	25	49	21	46	15	11	2,361	61	2,589
<b>Ethnicity</b>											
Amer Indian or Alaskan Native	43	25	68								
Asian	54	49		103							
Black	13	21			34						
Hispanic	56	46				102					
Hawaiian or Pacific Islander	10	15					25				
Other	8	11						19			
White	3,058	2,361							5,419		
Unspecified	50	61								111	
<b>Total</b>											<b>5,881</b>
<b>Citizenship</b>											
USA-Citizen	3,237	2,541	68	36	33	90	25	15	5,400	111	5,778
Nonresident	55	48	0	67	1	12	0	4	19	0	103
<b>Attendance</b>											
Full-time	2,460	2,036	53	94	27	84	20	14	4,118	86	4,496
Part-time	832	553	15	9	7	18	5	5	1,301	25	1,385
<b>Student Level</b>											
New Freshmen	567	382	11	10	3	25	3	2	864	31	949
Other Freshmen	693	511	18	25	6	23	4	7	1,092	29	1,204
Sophomore	588	434	13	20	7	12	5	3	940	22	1,022
Junior	591	459	6	15	7	12	2	3	991	14	1,050
Senior	767	688	17	32	11	30	11	4	1,335	15	1,455
Graduate	69	85	2	1	0	0	0	0	151	0	154
Graduate (non-matriculated)	17	30	1	0	0	0	0	0	46	0	47
<b>Location</b>											
On-Campus	3,215	2,574	68	103	34	101	24	19	5,332	108	5,789
St. George	26	10	0	0	0	0	1	0	34	1	36
Richfield	31	0	0	0	0	0	0	0	30	1	31
Multiple	20	5	0	0	0	1	0	0	23	1	25
Mean Age	23.7	24.3	25.7	22.3	24.6	23.7	22.2	25.2	24.0	23.6	24.0

**Student Demographic Summary**  
**Fall 2000 to 2002**

	<b>2000</b>	<b>2000</b>	<b>2001</b>	<b>2001</b>	<b>2002</b>	<b>2002</b>
	<b>Number</b>	<b>Percent</b>	<b>Number</b>	<b>Percent</b>	<b>Number</b>	<b>Percent</b>
<b>Age</b>						
18 and under	1,219	20.4%	1,269	20.8%	1,144	19.5%
19-20	1,230	20.6%	1,233	20.2%	1,211	20.6%
21-22	1,293	21.7%	1,319	21.6%	1,234	21.0%
23-24	842	14.1%	925	15.2%	870	14.8%
25-29	649	10.9%	668	11.0%	648	11.0%
30-34	206	3.5%	211	3.5%	228	3.9%
35-39	148	2.5%	127	2.1%	138	2.3%
Over 39	376	6.3%	343	5.6%	408	6.9%
Totals	5,963	100.0%	6,095	100.0%	5,881	100.0%
<b>Gender</b>						
Male	2,634	44.2%	2,714	44.5%	2,589	44.0%
Female	3,329	55.8%	3,381	55.5%	3,292	56.0%
<b>Ethnic Background</b>						
American Indian/Alaskan Native	57	1.0%	63	1.0%	68	1.2%
Asian	145	2.4%	126	2.1%	103	1.8%
Black	35	0.6%	32	0.5%	34	0.6%
Hispanic	106	1.8%	106	1.7%	102	1.7%
Native Hawaiian or Pacific Islander*	29	0.5%	26	0.4%	25	0.4%
Other	10	0.2%	18	0.3%	19	0.3%
White (Non-hispanic)	5,581	93.6%	5,642	92.6%	5,419	92.1%
Unspecified			82	1.3%	111	1.9%
Totals	5,963	100.0%	6,095	100.0%	5,881	100.0%
<b>Marital Status</b>						
Married	1,493	25.0%	1,579	25.9%	1,608	27.3%
Single	4,469	74.9%	4,514	74.1%	4,270	72.6%
Widowed	1	0.0%	2	0.0%	3	0.1%
<b>Residency</b>						
Non-Resident	509	8.5%	526	8.6%	521	8.9%
Resident	5,454	91.5%	5,569	91.4%	5,360	91.1%
<b>Level</b>						
Undergraduate	5,730	96.1%	5,884	96.5%	5,680	96.6%
Graduate	233	3.9%	211	3.5%	201	3.4%
<b>Enrollment Status</b>						
Part Time	1,454	24.4%	1,439	23.6%	4,496	76.4%
Full Time	4,509	75.6%	4,656	76.4%	1,385	23.6%
<b>Totals</b>	<b>5,963</b>	<b>100.0%</b>	<b>6,095</b>	<b>100.0%</b>	<b>5,881</b>	<b>100.0%</b>

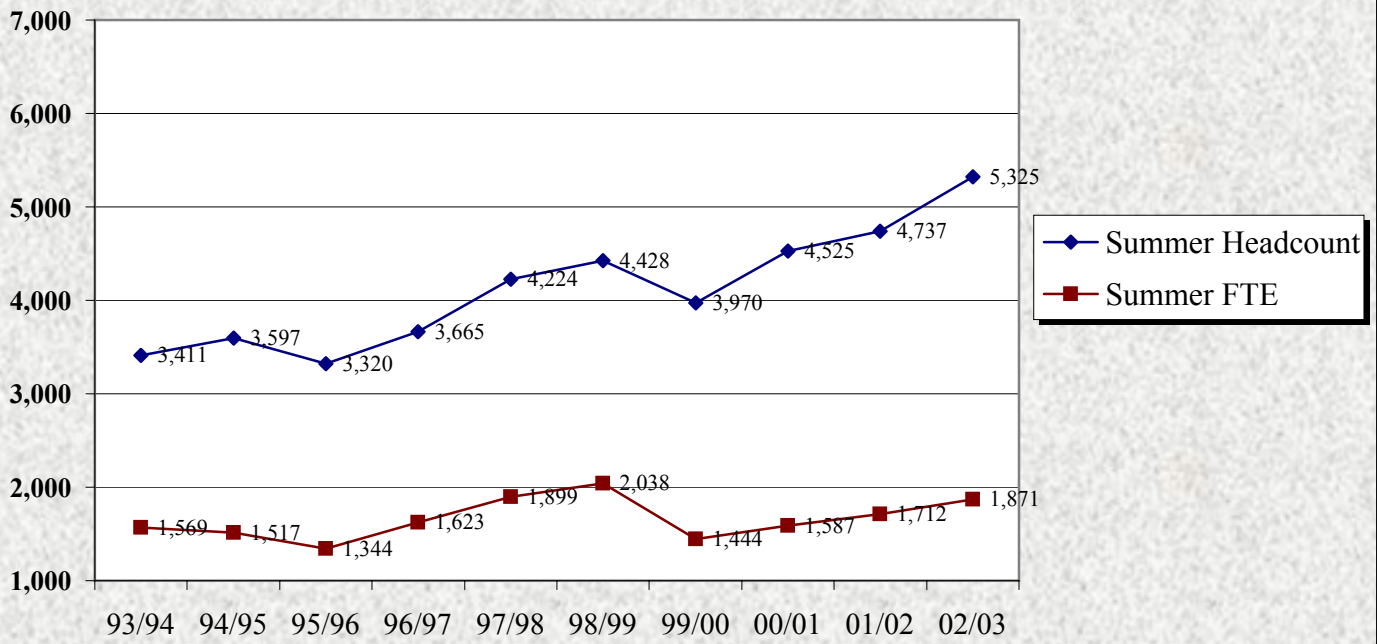
\*Prior to 1999 included in Asian or Pacific Islander total.

Source: Third-Week Enrollment Report, SUU Registrar's Office.

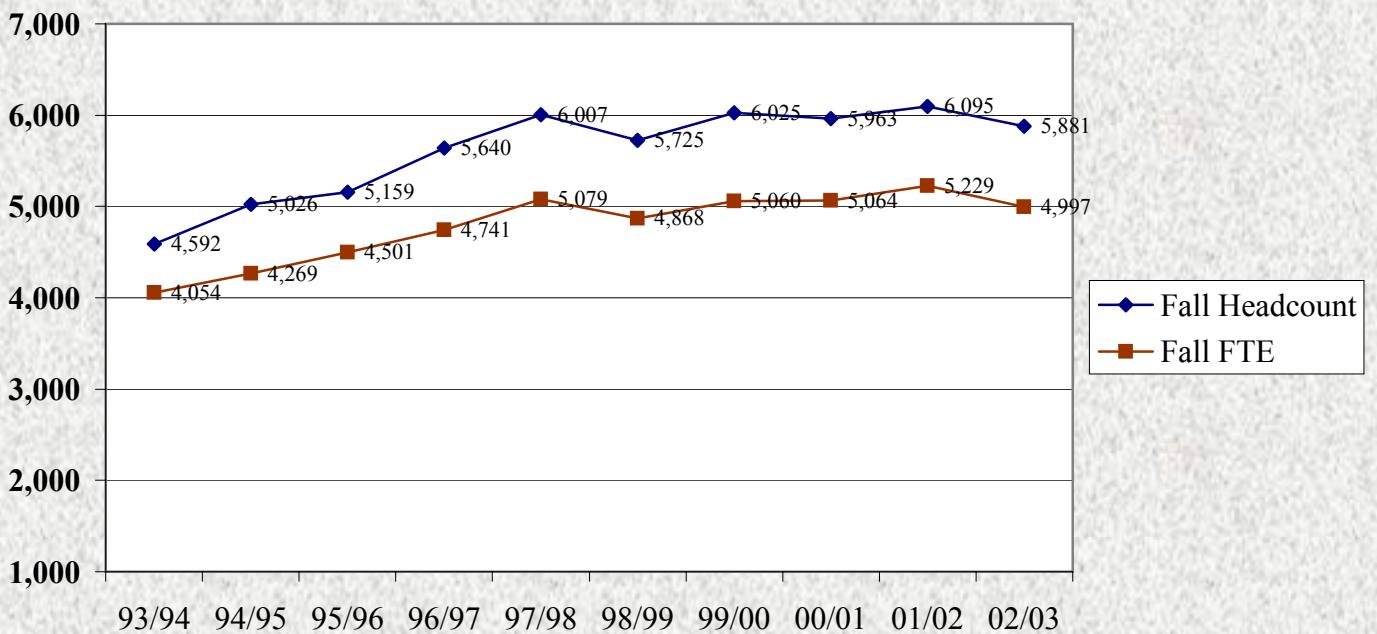
	93/94	94/95	95/96	96/97	97/98	98/99	99/00	00/01	01/02	02/03
Summer Headcount	3,411	3,597	3,320	3,665	4,224	4,428	3,970	4,525	4,737	5,325
Summer FTE	1,569	1,517	1,344	1,623	1,899	2,038	1,444	1,587	1,712	1,871

	93/94	94/95	95/96	96/97	97/98	98/99	99/00	00/01	01/02	02/03
Fall Headcount	4,592	5,026	5,159	5,640	6,007	5,725	6,025	5,963	6,095	5,881
Fall FTE	4,054	4,269	4,501	4,741	5,079	4,868	5,060	5,064	5,229	4,997

**Southern Utah University**  
**Summer Enrollment History**  
 1993/94 to 2002/03

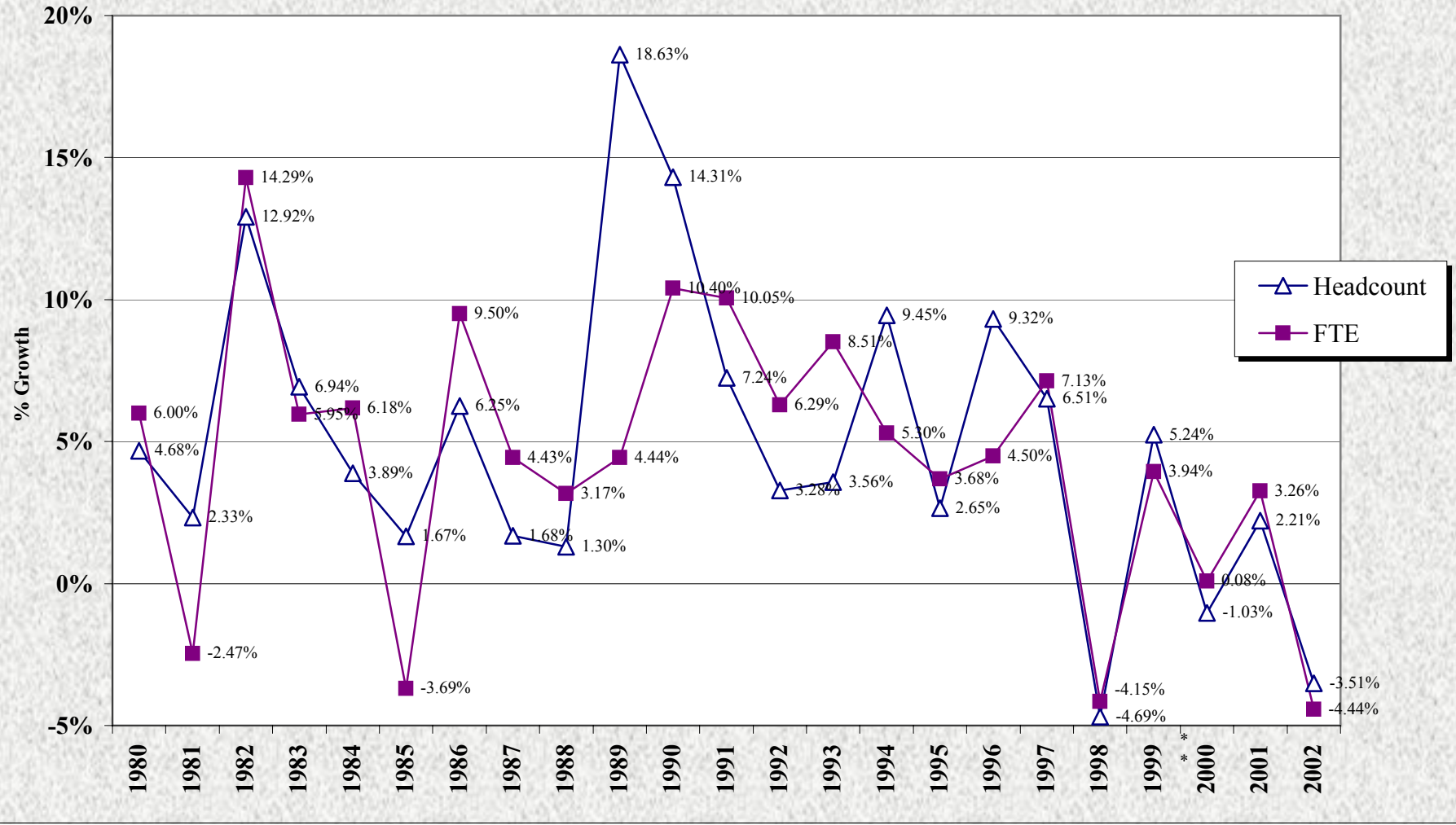


**Southern Utah University**  
**Fall Enrollment History**  
 1993-94 to 2002/03



Note: Percentages may not total due to rounding.

## Southern Utah University Annual Growth Rates Fall Headcount & Fall FTE's Budget-Related and Self-Support Enrollments



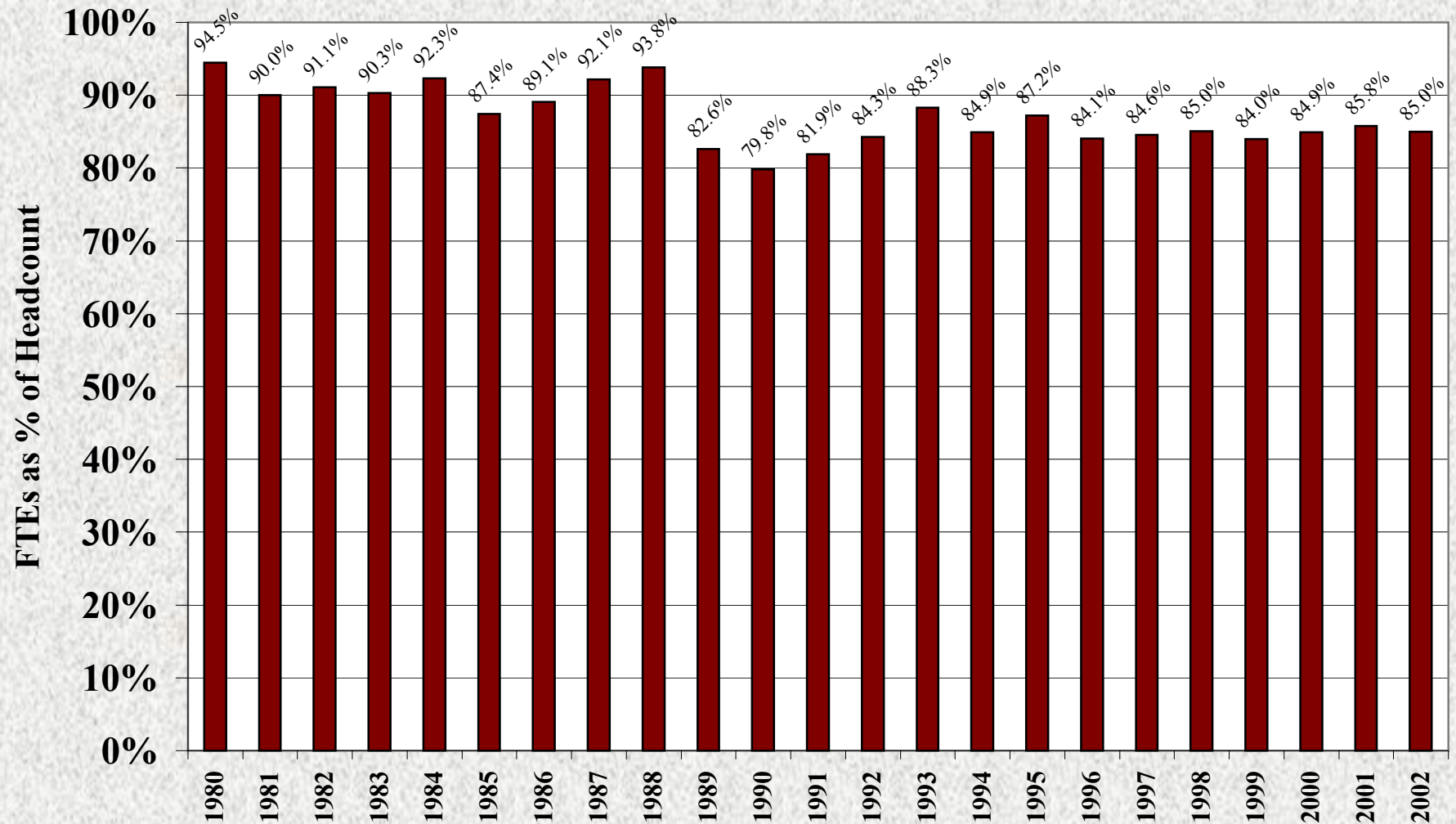
\* Semester Conversion

Source: Third-Week Enrollment Report, SUU Registrar's Office.



# Southern Utah University

## Relationship of FTEs to Fall Headcount



**SUU Headcount Enrollment**  
**1898 to 2001 (Fall)**  
**Budget Related and Self-Support**

Year	Enrollment	Year	Enrollment
1898	161	1951	357
1899	200	1952	403
1900	200	1953	310
1901	185	1954	416
1902	250	1955	427
1903	228	1956	505
1904	200	1957	544
1905	254	1958	706
1906	209	1959	750
1907	200	1960	772
1908	178	1961	963
1909	197	1962	935
1910	225	1963	1,004
1911	244	1964	1,256
1912	253	1965	1,635
1913	270	1966	1,676
1914	265	1967	1,797
1915	257	1968	1,830
1916	226	1969	1,765
1917	203	1970	2,037
1918	*	1971	1,927
1919	*	1972	1,789
1920	213	1973	1,620
1921	283	1974	1,860
1922	338	1975	1,883
1923	243	1976	1,912
1924	265	1977	1,884
1925	297	1978	1,798
1926	325	1979	1,966
1927	247	1980	2,058
1928	320	1981	2,106
1929	302	1982	2,378
1930	334	1983	2,543
1931	383	1984	2,642
1932	363	1985	2,589
1933	422	1986	2,821
1934	307	1987	2,941
1935	259	1988	3,436
1936	227	1989	3,629
1937	208	1990	4,135
1938	269	1991	4,293
1939	262	1992	4,434
1940	313	1993	4,592
1941	252	1994	5,026
1942	182	1995	5,159
1943	67	1996	5,640
1944	102	1997	6,007
1945	149	1998**	5,725
1946	388	1999	6,025
1947	446	2000	5,963
1948	428	2001	6,095
1949	443	2002	5,881
1950	385		

\* Total not available

\*\*Converted to a semester calendar

Source: Special Collections, Library; Registrar's Third-Week Enrollment Report.

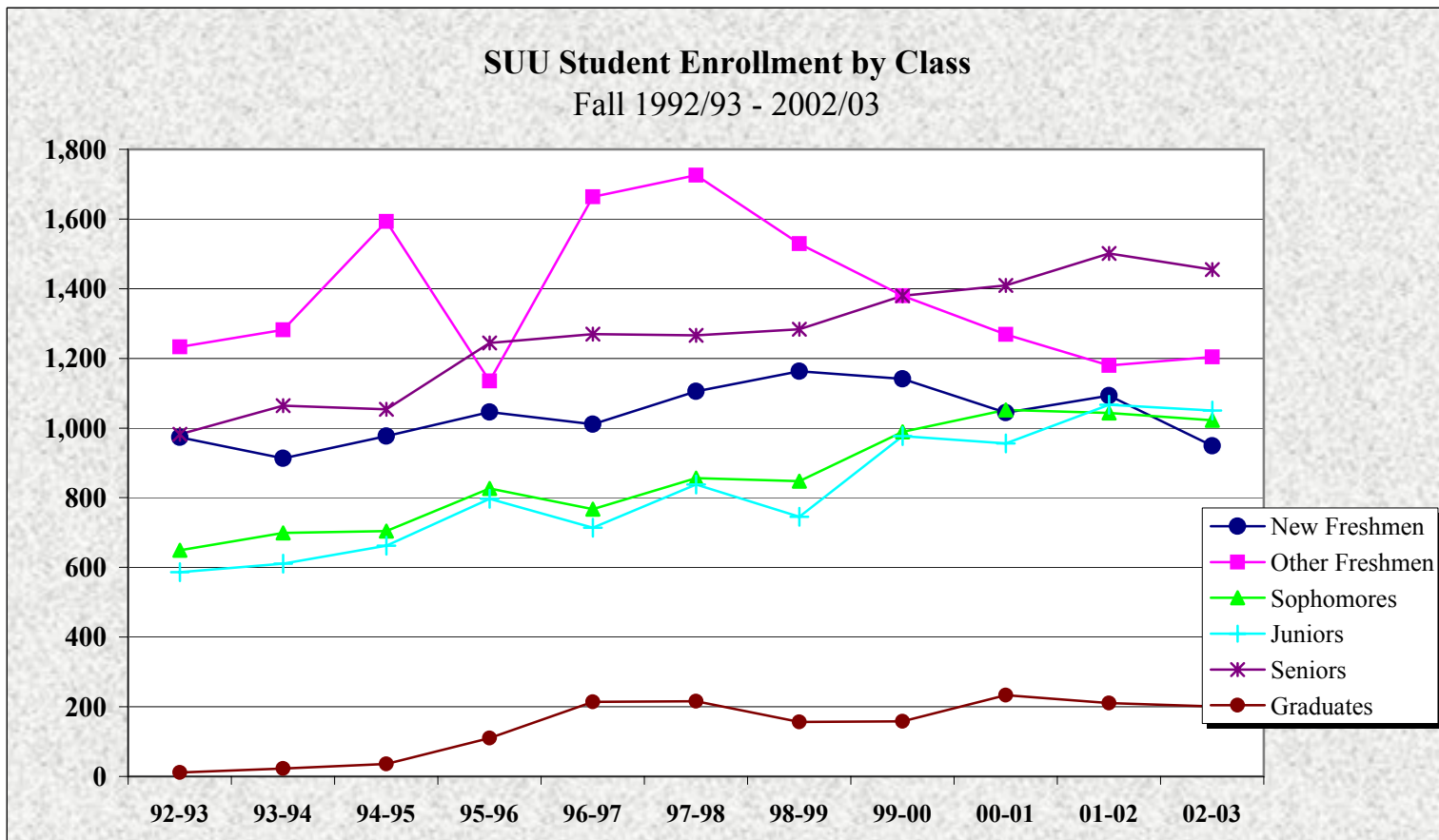
**BUDGET-RELATED AND SELF-SUPPORT ENROLLMENTS**  
**Enrollment History and Projections from 1990-91 to 2002-03**

**BOLD = Regents' Projection**

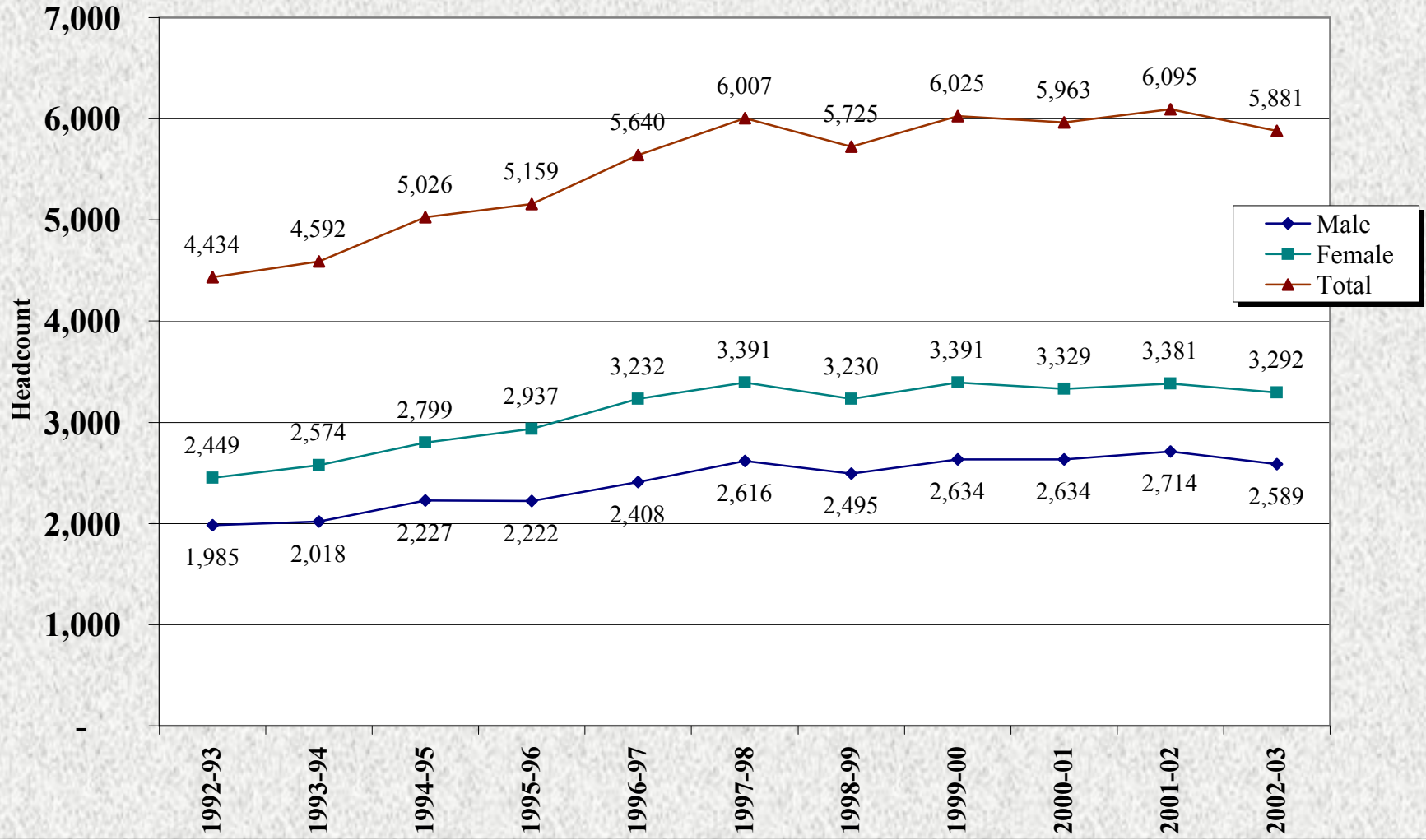
Year	Fall (3rd Week) Headcount			Fall (3rd Week) FTE			EOY Academic Year			EOY Annualized Year		
	Res	Nonres	Total	Res	Nonres	Total	Res	Nonres	Total	Res	Nonres	Total
<b>3rd Wk Actuals:</b>												
1990-91	3,763	240	4,003	2,961	233	3,194	2,869	216	3,085	3,163	276	3,439
1991-92	3,994	299	4,293	3,224	291	3,515	3,076	271	3,347	3,447	307	3,754
1992-93	4,069	365	4,434	3,384	352	3,736	3,115	312	3,427	3,533	405	3,938
1993-94	4,229	363	4,592	3,711	343	4,054	3,512	317	3,829	3,932	420	4,352
1994-95	4,503	523	5,026	3,808	461	4,269	3,653	425	4,078	4,092	491	4,583
1995-96	4,647	512	5,159	4,037	464	4,501	3,918	441	4,359	4,319	488	4,807
1996-97	5,059	581	5,640	4,222	519	4,741	4,122	490	4,612	4,611	542	5,153
1997-98	5,359	648	6,007	4,487	592	5,079	4,466	547	5,013	5,033	613	5,646
1998-99	5,171	554	5,725	4,351	492	4,843	4,562	490	5,052	5,189	542	5,731
1999-00	5,439	586	6,025	4,508	516	5,024	4,664	503	5,167	5,325	571	5,896
2000-01	5,454	509	5,963	4,551	471	5,022	4,722	464	5,186	5,450	528	5,978
2001-02	5,569	526	6,095	4,654	518	5,172	NA	NA	NA	5,577	557	6,134
2002-03	5,360	521	5,881	4,459	502	4,961	<b>4,700</b>	<b>494</b>	<b>5,194</b>	<b>5,575</b>	<b>554</b>	<b>6,129</b>
<b>2006-07</b>			<b>7,200</b>			<b>6,080</b>						<b>7,310</b>
<b>2011-12</b>			<b>7,870</b>			<b>6,620</b>						<b>8,070</b>
<b>2016-17</b>			<b>8,590</b>			<b>7,200</b>						<b>8,900</b>
<b>2021-22</b>			<b>9,510</b>			<b>7,930</b>						<b>9,930</b>

Source: USHE Board of Regents Agendas and Data Book.

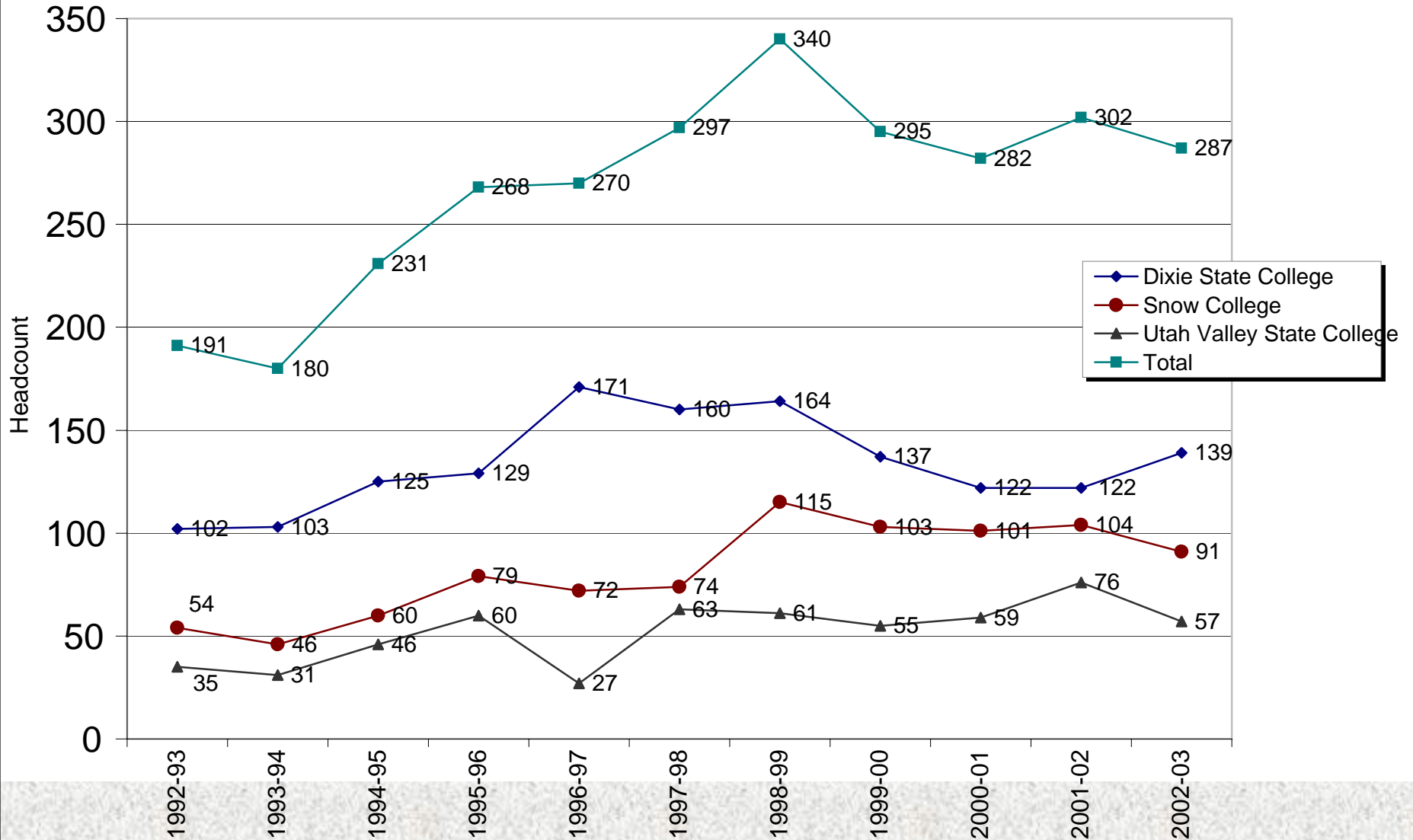
	<u>92-93</u>	<u>93-94</u>	<u>94-95</u>	<u>95-96</u>	<u>96-97</u>	<u>97-98</u>	<u>98-99</u>	<u>99-00</u>	<u>00-01</u>	<u>01-02</u>	<u>02-03</u>
<b>New Freshmen</b>	973	913	977	1,046	1,011	1,105	1,163	1,141	1,044	1,093	949
<b>Other Freshmen</b>	1,233	1,282	1,593	1,135	1,664	1,726	1,529	1,380	1,269	1,180	1,204
<b>Sophomores</b>	649	699	704	827	767	856	848	989	1,052	1,043	1,022
<b>Juniors</b>	586	611	662	797	714	838	745	977	956	1,067	1,050
<b>Seniors</b>	982	1,064	1,054	1,244	1,270	1,266	1,284	1,380	1,409	1,501	1,455
<b>Graduates</b>	11	23	36	110	214	216	156	158	233	211	201
<b>Total</b>	4,434	4,592	5,026	5,159	5,640	6,007	5,725	6,025	5,963	6,095	5,881



## Southern Utah University Headcount Enrollment By Gender 1992-93 through 2002-03



## Summary of New Transfer Students by Prior School Attended 1992-93 through 2002-03 (Fall)



**Summary of New Freshmen  
by Utah High School Attended  
1998-99 to 2002-03 (Fall)**

Institution Name	Institution State	1998-99	1999-00	2000-01	2001-02	2002-03
Alpine Life & Learning Center	UT		1			0
Alta High School	UT	8	13	8	16	8
Altamont High School	UT		1		4	0
American Fork High School	UT	7	10	7	5	1
Bear River High School	UT	6	11	5	8	6
Beaver High School	UT	11	11	15	15	12
Ben Lomond High School	UT	3		2	1	0
Big Water School	UT	1				0
Bingham High School	UT	31	25	18	11	22
Bonneville High School	UT	8	1	5	2	2
Bountiful High School	UT	5	4	3	6	3
Box Elder High School	UT	6	7	10	15	5
Brighton High School	UT	4	10	8	7	5
Browning Academy	UT	1	1			0
Bryce Valley High School	UT	13	7	11	12	5
Cache High School	UT		1			0
Canyon View High School	UT	17	73	55	93	64
Carbon High School	UT	5	6	2	3	2
Cedar City High School	UT	140	102	108	103	103
Cedar Mountain Academy	UT	0	0	0	0	2
Cedar Ridge High School	UT		1			0
Central High School	UT		1			0
Clearfield High School	UT	3	2	7	1	4
Copper Hills High School	UT	8	16	11	17	7
Cottonwood High School	UT	4	9	5	10	4
Cyprus High School	UT	14	6	1	7	2
Davis High School	UT	17	9	9	12	13
Delta High School	UT	14	28	19	34	23
Dixie High School	UT	4	4	9	1	3
Duchesne High School	UT	2	4	4	1	0
Dugway High School	UT		3			0
East Carbon High School	UT	1				1
East High School	UT	4	2	5	5	2
Emery County High School	UT	9	14	10	6	3
Enterprise High School	UT	11	9	7	10	11
Escalante High School	UT	6	6	6	5	2
Fremont High School	UT		3	6	6	5
Grand County High School	UT	10	1	9	6	6
Granger High School	UT	15	16	16	8	6
Granite High School	UT	1	6	2	1	1
Grantsville High School	UT	5	2	4	6	4
Green River High School	UT	2				0
Gunnison Valley High School	UT	4	3	5	7	7
Highland High School	UT	3	5	1	4	3
Hillcrest High School	UT	9	4	2	7	8
Horizonte Inst & Train Center	UT			1		0
Hunter High School	UT	14	3	15	8	11
Hurricane High School	UT	9	4	15	11	25
Independence High School	UT		1			0
Intermountain Christian Academy	UT		1			0
Jordan High School	UT	29	13	7	17	19

**Summary of New Freshmen  
by Utah High School Attended  
1998-99 to 2002-03 (Fall)**

Institution Name	Institution State	1998-99	1999-00	2000-01	2001-02	2002-03
Juab High School	UT	11	12	4	8	2
Juan Diego High School	UT	0	0	0	0	1
Judge Memorial High School	UT	1	3			0
Kanab High School	UT	7	6	11	11	10
Kearns High School	UT	10	7	5	4	6
Layton High School	UT	4	7	12	7	4
Lehi High School	UT	1	11	8	6	7
Logan High School	UT	4	4	3	1	2
Lone Peak High School	UT	9	13	9	16	14
Manila High School	UT		1			1
Manti High School	UT	4	1	5		2
Master Academy	UT	1				0
Meridian School	UT	1				1
Milford High School	UT	6	13	10	2	9
Millard High School	UT	19	14	10	15	10
Millcreek High School	UT			1		0
Monticello High School	UT	3	4	5	4	4
Morgan High School	UT	5	1	2	1	0
Mountain Crest High School	UT	2	3	1	7	4
Mountain High School	UT			1		0
Mountain View High School	UT	9	9	11	7	0
Murray High School	UT	16	19	21	8	7
Navajo Mountain High School	UT	0	0	0	0	1
North Sanpete High School	UT	1	1		1	1
North Sevier High School	UT	5	10	7	3	11
North Summit High School	UT	2		1	1	6
Northridge High School	UT	3	6	6	9	3
Ogden High School	UT	2	1		1	2
Olympus High School	UT	7	9	3	4	9
Orem High School	UT	11	10	8	7	6
Panguitch High School	UT	17	14	14	7	4
Park City High School	UT	1	5	2	1	0
Parowan Christian School	UT			1		0
Parowan High School	UT	14	19	14	17	28
Payson High School	UT	4	7	6	11	7
Pine View High School	UT	13	5	7	11	17
Piute High School	UT	7	9	3	3	7
Pleasant Grove High School	UT	9	11	11	11	6
Provo High School	UT	10	6	4	2	3
Realms Of Inquiry	UT			1		0
Rich High School	UT	1	1	1	1	2
Richfield High School	UT	16	12	26	26	13
Riverton High School	UT			6	8	11
Roy High School	UT	5	3	4	3	1
Saint Josephs High School	UT				1	0
Salt Lake Christian Academy	UT					0
San Juan High School	UT	6	4	2	3	3
Shiloah Valley Christian Schools	UT	2	3	1	2	0
Sky View High School	UT	2	1	3	5	2
Skyline High School	UT	9	6	5	9	3
Snow Canyon High School	UT	8	9	12	11	6



**Summary of New Freshmen  
by Utah High School Attended  
1998-99 to 2002-03 (Fall)**

<b>Institution Name</b>	<b>Institution State</b>	<b>1998-99</b>	<b>1999-00</b>	<b>2000-01</b>	<b>2001-02</b>	<b>2002-03</b>
Sorenson's Ranch School Inc.	UT	1				0
South Sevier High School	UT	11	13	9	9	14
South Summit High School	UT	5	2		3	2
Spanish Fork High School	UT	4	6	11	3	9
Springville High School	UT	12	8	21	11	4
Tabiona High School	UT	2				0
Taylorsville High School	UT	17	13	14	8	11
The Waterford School	UT		1			0
Timpanogas High School	UT	8	12	9	10	2
Timpview High School	UT	14	5	4	2	4
Tintic High School	UT			3		1
Tooele High School	UT	12	19	13	10	11
Tuacahn High School for Per Arts	UT			4	2	3
Uintah High School	UT	14	7	6	6	3
Union High School	UT	2	9	3	8	4
Valley High School	UT	4	5	4	2	4
Viewmont High School	UT	14	11	10	10	7
Wasatch Academy	UT	1	1	2	1	1
Wasatch High School	UT	6	15	4	7	18
Wayne High School	UT	2	11	2	5	6
Weber Basin High School	UT	1				0
Weber High School	UT	5	2	1	4	5
Wendover High School	UT	3	1			0
West Desert High School	UT	1				1
West High School	UT	8	2			0
West Jordan High School	UT	17	8	11	11	1
Woodland Hills School	UT	1				0
Woods Cross High School	UT	7	4	11	8	4
Unknown	UT				1	
<b>Total</b>	<b>UT</b>	<b>904</b>	<b>895</b>	<b>842</b>	<b>867</b>	<b>761</b>
States Other Than Utah		236	233	189	217	175
General Education Diploma		23	13	13	9	13
<b>Total</b>		<b>1163</b>	<b>1141</b>	<b>1044</b>	<b>1093</b>	<b>949</b>

# ENROLLMENT STATISTICS

## SCHOOL OF CONTINUING AND PROFESSIONAL STUDIES

	1996-97	1997-98	1998-99	1999-00	2000-01	2001-02
	CREDIT	CREDIT	CREDIT	CREDIT	CREDIT	CREDIT
EXTENDED DAY/EVENING SCHOOL	943	1,133	1,212	888	893	1,167
Summer School	3665	4,224	4,428	4,029	4,525	4,737
CONFERENCE SERVICES	366	158	149	314	357	351
Concurrent	275	271	235	198	264	255
CEU's	368	290	245	150	397	396
DISTANCE LEARNING					3.2	2.4
Independent Study						
At-Site	3,956	3,477	3,934	342	417	627
Internet	215		173	5,074	6,393	6,730
CONCURRENT			222	236	463	449
Internet			110	328		
Adjunct	103	414	286	143	197	124
Summer School Concurrent				580	620	411
EDNET				51	108	92
Concurrent			217	320	389	344
Undergraduate		330	339	710	617	307
Graduate				104	197	286
SNOW COLLEGE SOUTH CENTER	249	360	509	293	287	189
ST. GEORGE UNIVERSITY CENTER	1712	1681	1277	873	436	567
<b>TOTALS</b>	<b>11,269</b>	<b>12,048</b>	<b>13,091</b>	<b>14,483</b>	<b>16,163</b>	<b>16,636</b>