

SUU Enrollment Statistics

SUU 2003 Fall Term Enrollment Statistics

Fall Headcount Enrollment Statistics	Entry Status		Residency		Attendance		Location			Mean Age	Total
	First Time	Returning	Out-of-State	In-State	Full-time	Part-time	On-Campus	Richfield	Multiple		
Gender											
Female	899	2,418	289	3,028	2,309	1,008	3,282	23	12	24.7	3,317
Male	723	2,008	262	2,469	2,067	664	2,721	8	2	24.6	2,731
Ethnicity											
American Indian or Alaskan Native	18	46	2	62	46	18	64	0	0	26.7	64
Asian	27	91	71	47	72	46	118	0	0	23.1	118
Black	15	29	13	31	33	11	44	0	0	27.1	44
Hispanic	31	75	20	86	82	24	106	0	0	24.5	106
Native Hawaiian or Pacific Islander	13	11	6	18	21	3	24	0	0	22.9	24
Other	2	17	2	17	14	5	19	0	0	27.9	19
White	1,444	4,020	414	5,050	3,978	1,486	5,421	30	13	24.3	5,464
Unspecified	72	136	22	186	130	78	206	1	1	34.1	208
Asian and Pacific Islanders	0	1	1	0	0	1	1	0	0	24.0	1
											6,048
Citizenship											
USA-Citizen	1,600	4,345	472	5,473	4,314	1,631	5,900	31	14	24.7	5,945
Nonresident	22	81	79	24	62	41	103	0	0	24.2	103
Attendance											
Full-time	1,407	2,969	482	3,894	4,376	0	4,366	2	8	22.4	4,376
Part-time	215	1,457	69	1,603	0	1,672	1,637	29	6	30.4	1,672
Student Level											
New Freshmen	949	0	162	787	894	55	947	2	0	19.0	949
Other Freshmen	131	1,242	100	1,273	431	942	1,355	17	1	27.6	1,373
Sophomore	198	799	121	876	846	151	990	5	2	22.4	997
Junior	208	774	81	901	853	129	971	4	7	23.8	982
Senior	60	1,479	85	1,454	1,271	268	1,537	1	1	26.0	1,539
Graduate	41	97	2	136	47	91	137	0	1	33.7	138
Graduate (non-matriculated)	35	35	0	70	34	36	66	2	2	41.9	70

2003 Fall Term Demographic Statistics

Fall Headcount Demographic Statistics	Gender		Ethnicity								Asian/ Pac Isl	Total
	Female	Male	Amer Ind Alaskan	Asian	Black	Hispanic	Hawaiian/ Pac Isl	Other	White	Unspec		
Gender												
Female	3,317		38	62	19	61	7	10	3,010	110	0	3,317
Male		2,731	26	56	25	45	17	9	2,454	98	1	2,731
Ethnicity												
Amer Indian or Alaskan Native	38	26	64									
Asian	62	56		118								
Black	19	25			44							
Hispanic	61	45				106						
Hawaiian or Pacific Islander	7	17					24					
Other	10	9						19				
White	3,010	2,454							5,464			
Unspecified	110	98								208		
Asian / Pacific Islander	0	1									1	
Total												6,048
Citizenship												
USA-Citizen	3,266	2,679	63	48	42	95	22	17	5,449	208	1	5,945
Nonresident	51	52	1	70	2	11	2	2	15	0	0	103
Attendance												
Full-time	2,309	2,067	46	72	33	82	21	14	3,978	130	0	4,376
Part-time	1,008	664	18	46	11	24	3	5	1,486	78	1	1,672
Student Level												
New Freshmen	547	402	12	20	6	19	4	2	837	49	0	949
Other Freshmen	793	580	12	38	10	29	2	4	1,201	76	1	1,373
Sophomore	549	448	9	18	6	18	4	3	912	27	0	997
Junior	515	467	14	15	10	19	8	2	888	26	0	982
Senior	813	726	14	26	12	19	5	8	1,428	27	0	1,539
Graduate	60	78	1	1	0	2	0	0	133	1	0	138
Graduate (non-matriculated)	40	30	2	0	0	0	1	0	65	2	0	70
Location												
On-Campus	3,282	2,721	64	118	44	106	24	19	5,421	206	1	6,003
Richfield	23	8	0	0	0	0	0	0	30	1	0	31
Multiple	12	2	0	0	0	0	0	0	13	1	0	14
Mean Age	24.7	24.6	26.7	23.1	27.1	24.5	22.9	27.9	24.3	34.1	24.0	24.7

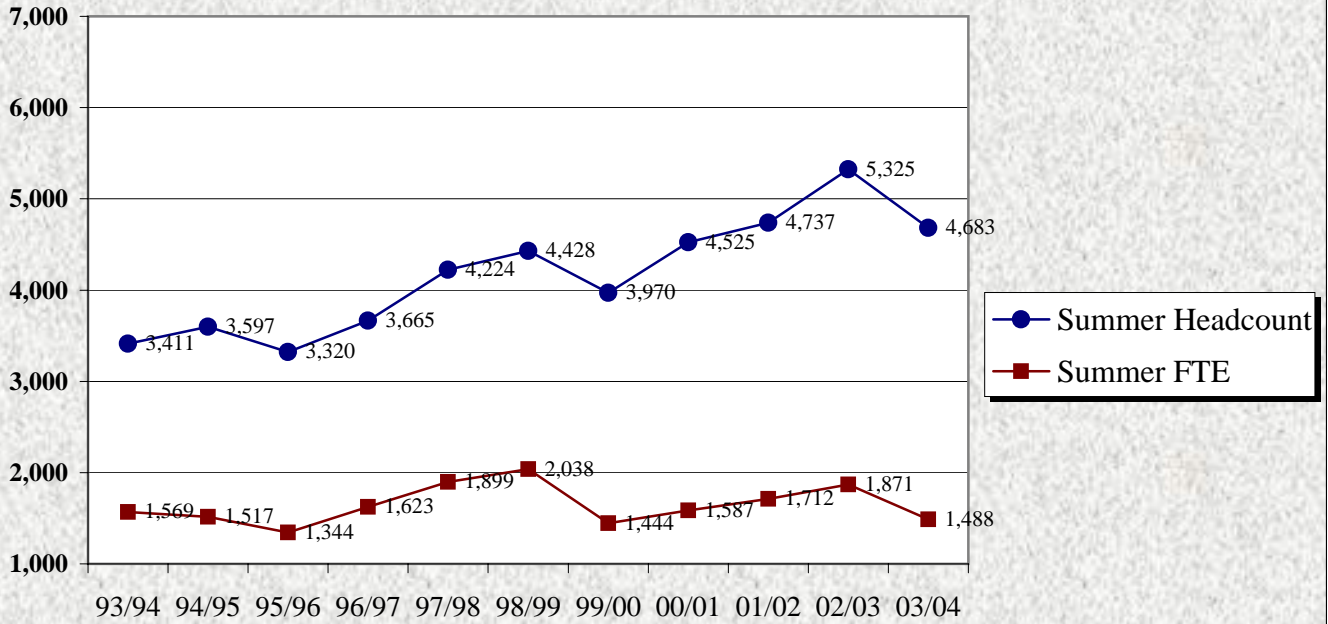
Student Demographic Summary
Fall 2001 to 2003

	2001 Number	2001 Percent	2002 Number	2002 Percent	2003 Number	2003 Percent
Age						
18 and under	1,269	20.8%	1,144	19.5%	1,136	18.8%
19-20	1,233	20.2%	1,211	20.6%	1,159	19.2%
21-22	1,319	21.6%	1,234	21.0%	1,203	19.9%
23-24	925	15.2%	870	14.8%	899	14.9%
25-29	668	11.0%	648	11.0%	736	12.2%
30-34	211	3.5%	228	3.9%	259	4.3%
35-39	127	2.1%	138	2.3%	153	2.5%
Over 39	343	5.6%	408	6.9%	503	8.3%
Totals	6,095	100.0%	5,881	100.0%	6,048	100.0%
Gender						
Male	2,714	44.5%	2,589	44.0%	2,731	45.2%
Female	3,381	55.5%	3,292	56.0%	3,317	54.8%
Ethnic Background						
American Indian/Alaskan Native	63	1.0%	68	1.2%	64	1.1%
Asian	126	2.1%	103	1.8%	118	2.0%
Black	32	0.5%	34	0.6%	44	0.7%
Hispanic	106	1.7%	102	1.7%	106	1.8%
Native Hawaiian or Pacific Islander*	26	0.4%	25	0.4%	24	0.4%
Other	18	0.3%	19	0.3%	19	0.3%
White (Non-hispanic)	5,642	92.6%	5,419	92.1%	5,464	90.3%
Unspecified	82	1.3%	111	1.9%	208	3.4%
Asian or Pacific Islander					1	0.0%
Totals	6,095	100.0%	5,881	100.0%	6,048	100.0%
Marital Status						
Married	1,579	25.9%	1,608	27.3%	1,731	28.6%
Single	4,514	74.1%	4,270	72.6%	4,315	71.3%
Widowed	2	0.0%	3	0.1%	2	0.0%
Residency						
Non-Resident	526	8.6%	521	8.9%	551	9.1%
Resident	5,569	91.4%	5,360	91.1%	5,497	90.9%
Level						
Undergraduate	5,884	96.5%	5,680	96.6%	5,840	96.6%
Graduate	211	3.5%	201	3.4%	208	3.4%
Enrollment Status						
Part Time	1,439	23.6%	1,385	23.6%	1,672	27.6%
Full Time	4,656	76.4%	4,496	76.4%	4,376	72.4%
Totals	6,095	100.0%	5,881	100.0%	6,048	100.0%

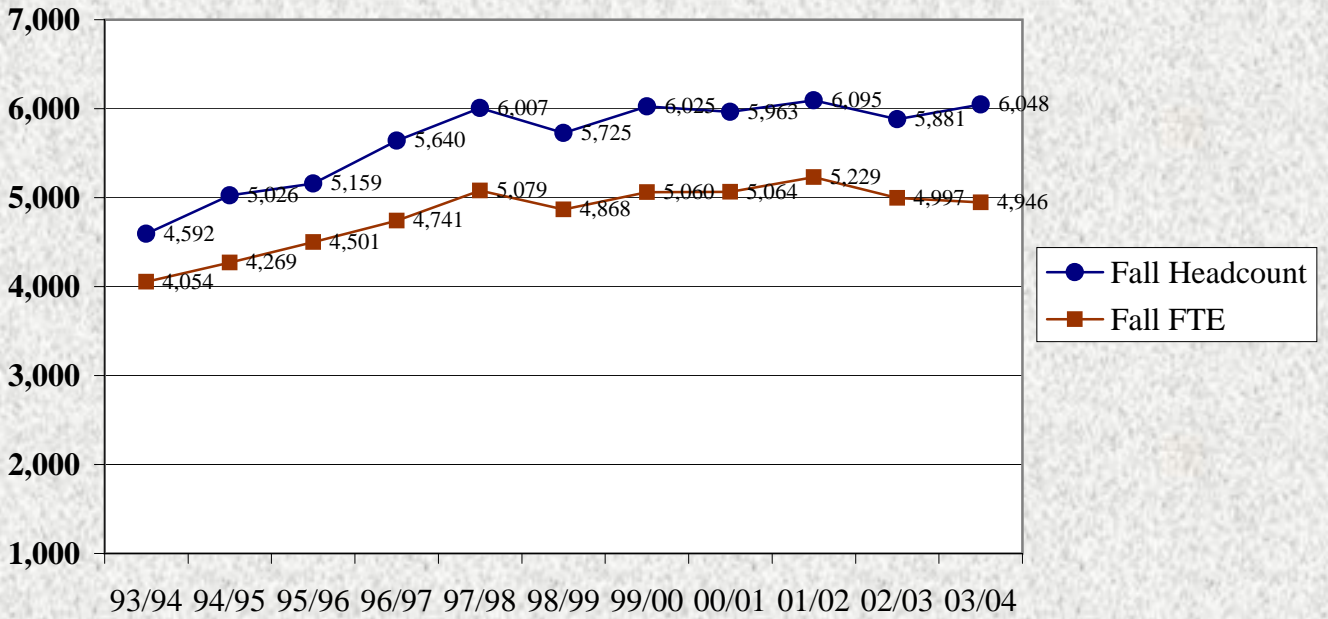
*Prior to 1999 included in Asian or Pacific Islander total.

Source: Third-Week Enrollment Report, SUU Registrar's Office.

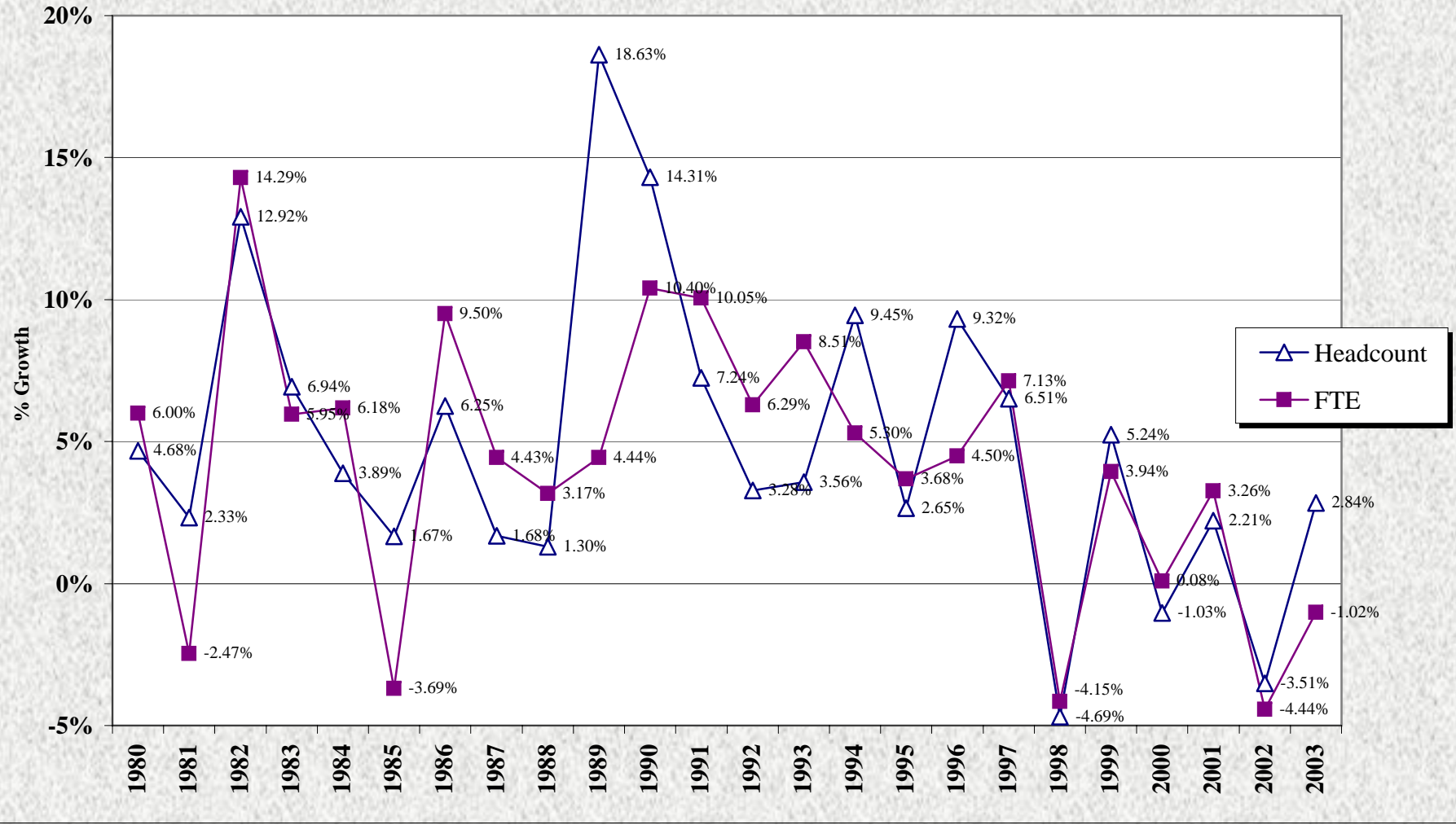
Southern Utah University
Summer Enrollment History
 1993/94 to 2003/04



Southern Utah University
Fall Enrollment History
 1993/94 to 2003/04



Southern Utah University
Annual Growth Rates
Fall Headcount & Fall FTE's
Budget-Related and Self-Support Enrollments

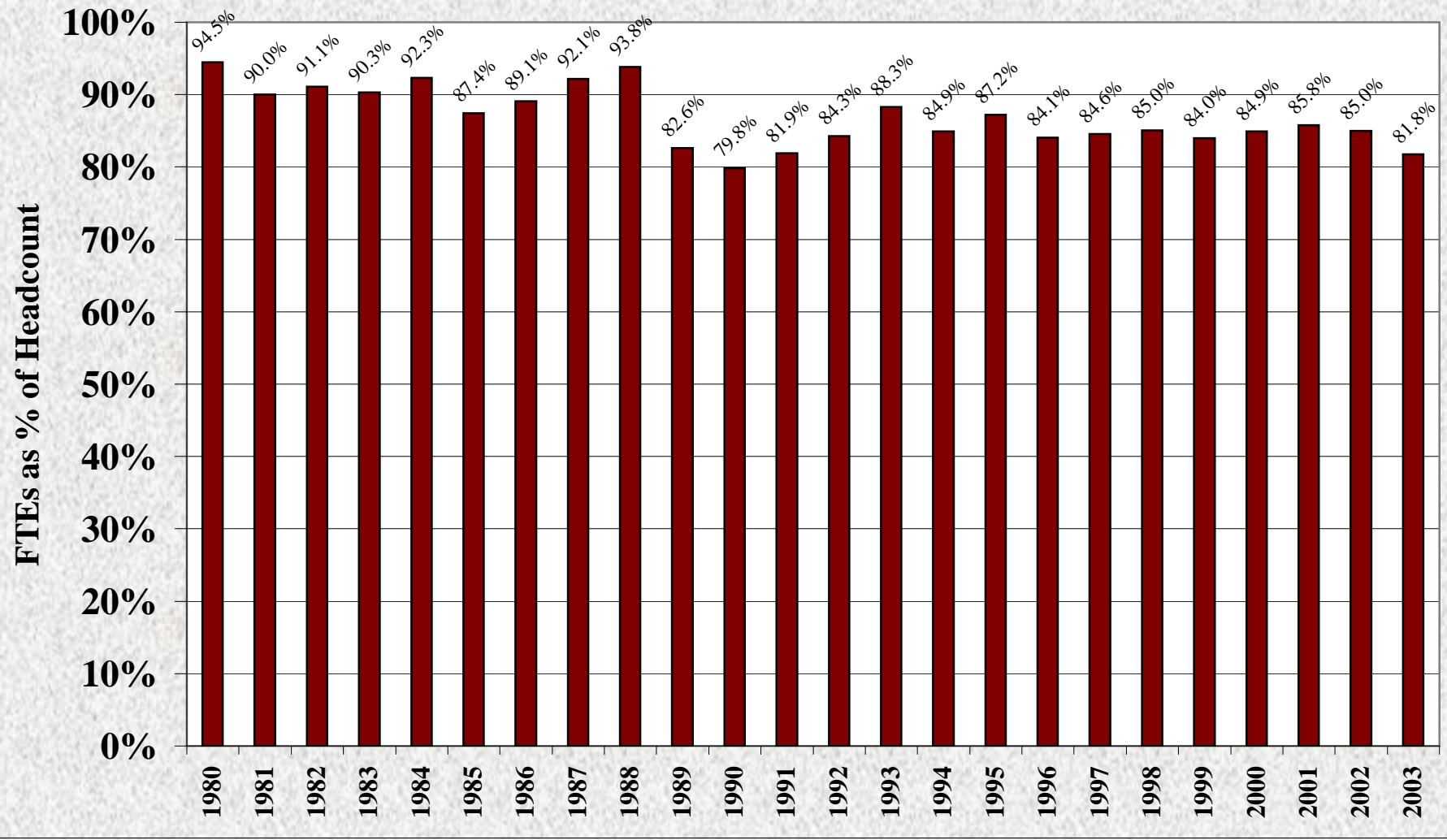


* Semester Conversion

Source: Third-Week Enrollment Report, SUU Registrar's Office.

Associate Provost's Office

Southern Utah University Relationship of FTEs to Fall Headcount



SUU Headcount Enrollment
1898 to 2003 (Fall)
Budget Related and Self-Support

Year	Enrollment	Year	Enrollment
1898	161	1951	357
1899	200	1952	403
1900	200	1953	310
1901	185	1954	416
1902	250	1955	427
1903	228	1956	505
1904	200	1957	544
1905	254	1958	706
1906	209	1959	750
1907	200	1960	772
1908	178	1961	963
1909	197	1962	935
1910	225	1963	1,004
1911	244	1964	1,256
1912	253	1965	1,635
1913	270	1966	1,676
1914	265	1967	1,797
1915	257	1968	1,830
1916	226	1969	1,765
1917	203	1970	2,037
1918	*	1971	1,927
1919	*	1972	1,789
1920	213	1973	1,620
1921	283	1974	1,860
1922	338	1975	1,883
1923	243	1976	1,912
1924	265	1977	1,884
1925	297	1978	1,798
1926	325	1979	1,966
1927	247	1980	2,058
1928	320	1981	2,106
1929	302	1982	2,378
1930	334	1983	2,543
1931	383	1984	2,642
1932	363	1985	2,589
1933	422	1986	2,821
1934	307	1987	2,941
1935	259	1988	3,436
1936	227	1989	3,629
1937	208	1990	4,135
1938	269	1991	4,293
1939	262	1992	4,434
1940	313	1993	4,592
1941	252	1994	5,026
1942	182	1995	5,159
1943	67	1996	5,640
1944	102	1997	6,007
1945	149	1998**	5,725
1946	388	1999	6,025
1947	446	2000	5,963
1948	428	2001	6,095
1949	443	2002	5,881
1950	385	2003	6048

* Total not available

**Converted to a semester calendar

Source: Special Collections, Library; Registrar's Third-Week Enrollment Report.

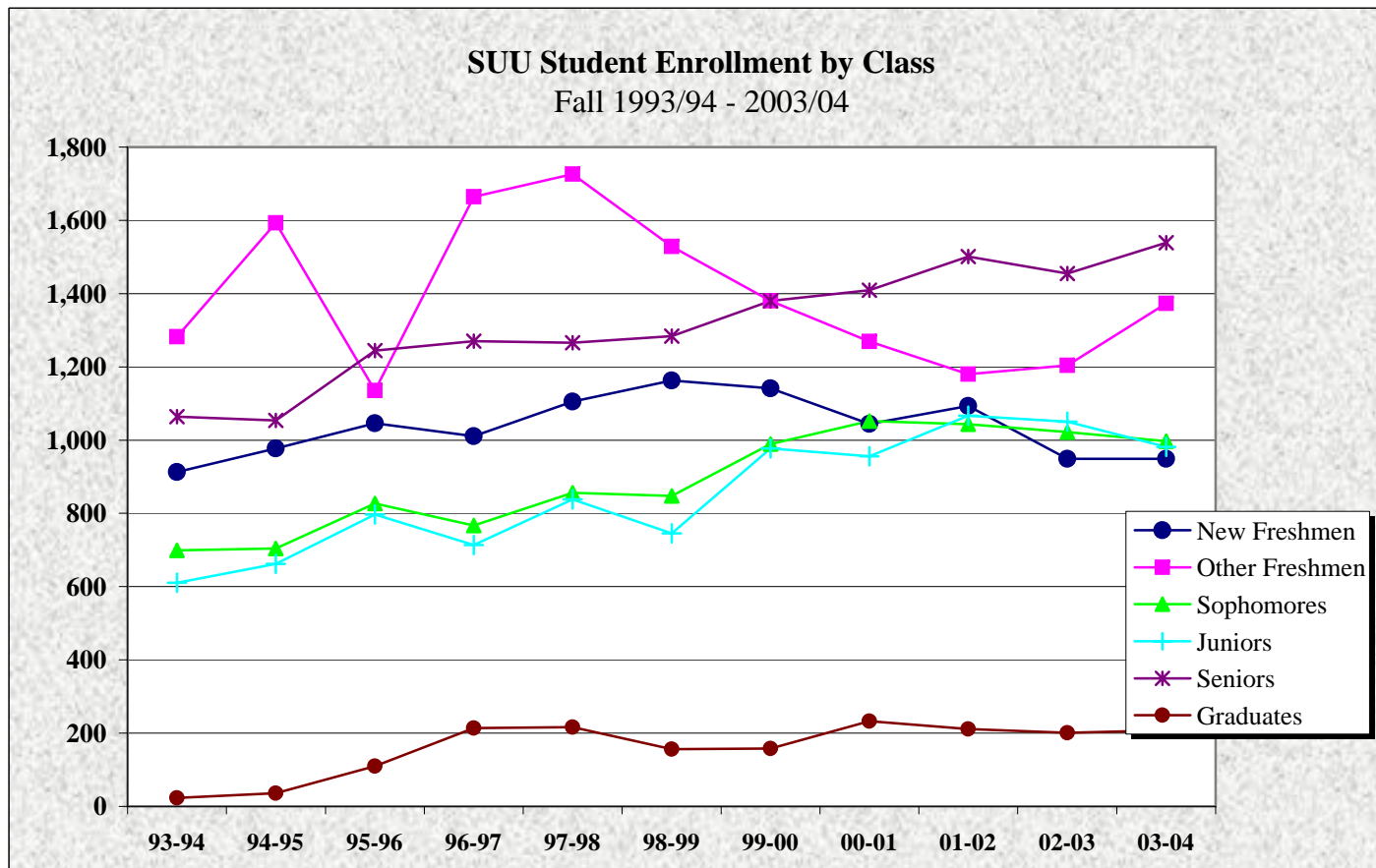
BUDGET-RELATED AND SELF-SUPPORT ENROLLMENTS
Enrollment History and Projections from 1990-91 to 2003-04

BOLD = Regents' Projection

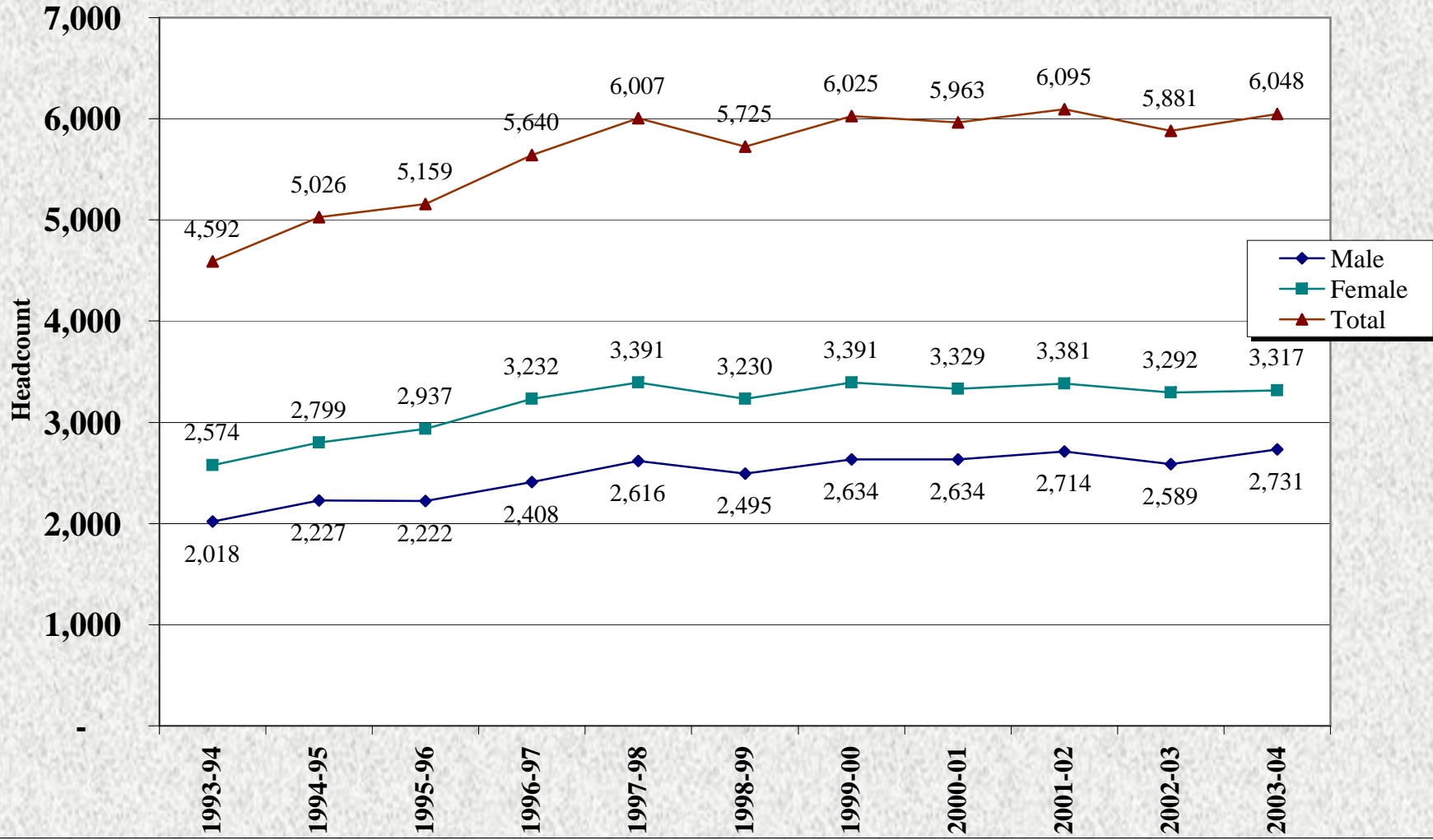
Year	Fall (3rd Week) Headcount			Fall (3rd Week) FTE			EOY Academic Year			EOY Annualized Year		
	Res	Nonres	Total	Res	Nonres	Total	Res	Nonres	Total	Res	Nonres	Total
3rd Wk Actuals:												
1990-91	3,763	240	4,003	2,961	233	3,194	2,869	216	3,085	3,163	276	3,439
1991-92	3,994	299	4,293	3,224	291	3,515	3,076	271	3,347	3,447	307	3,754
1992-93	4,069	365	4,434	3,384	352	3,736	3,115	312	3,427	3,533	405	3,938
1993-94	4,229	363	4,592	3,711	343	4,054	3,512	317	3,829	3,932	420	4,352
1994-95	4,503	523	5,026	3,808	461	4,269	3,653	425	4,078	4,092	491	4,583
1995-96	4,647	512	5,159	4,037	464	4,501	3,918	441	4,359	4,319	488	4,807
1996-97	5,059	581	5,640	4,222	519	4,741	4,122	490	4,612	4,611	542	5,153
1997-98	5,359	648	6,007	4,487	592	5,079	4,466	547	5,013	5,033	613	5,646
1998-99	5,171	554	5,725	4,351	492	4,843	4,562	490	5,052	5,189	542	5,731
1999-00	5,439	586	6,025	4,508	516	5,024	4,664	503	5,167	5,325	571	5,896
2000-01	5,454	509	5,963	4,551	471	5,022	4,722	464	5,186	5,450	528	5,978
2001-02	5,569	526	6,095	4,654	518	5,172	NA	NA	NA	5,577	557	6,134
2002-03	5,360	521	5,881	4,459	502	4,961	4,497	479	4,976	5,372	538	5,910
2003-04			6,048			4,945						
2007-08			6,620			5,560						6,720
2012-13			7,320			6,130						7,520
2017-18			8,090			6,740						8,980
2022-23			9,120			7,570						9,550

Source: USHE Board of Regents Agendas and Data Book.

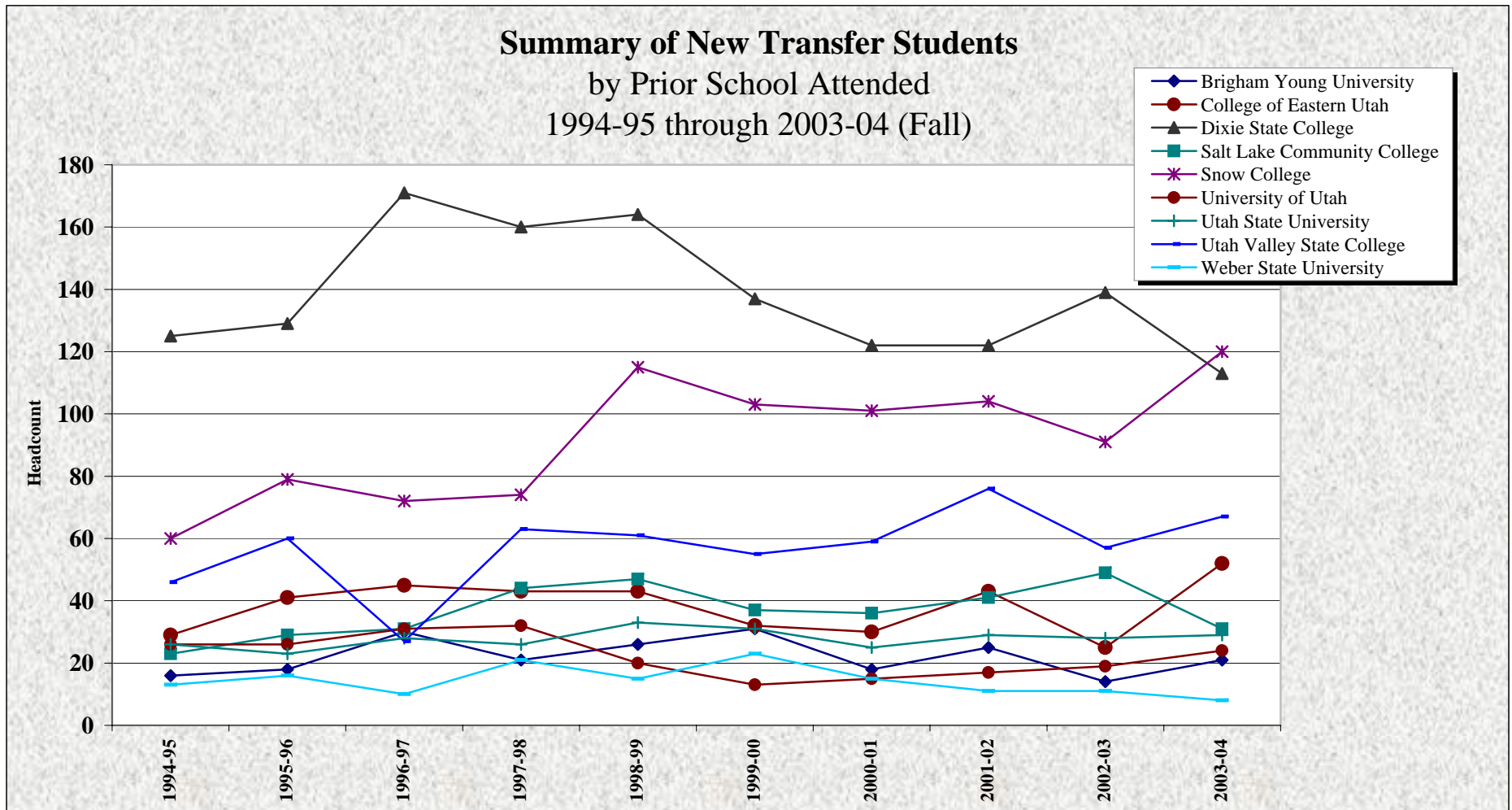
	<u>93-94</u>	<u>94-95</u>	<u>95-96</u>	<u>96-97</u>	<u>97-98</u>	<u>98-99</u>	<u>99-00</u>	<u>00-01</u>	<u>01-02</u>	<u>02-03</u>	<u>03-04</u>
New Freshmen	913	977	1,046	1,011	1,105	1,163	1,141	1,044	1,093	949	949
Other Freshmen	1,282	1,593	1,135	1,664	1,726	1,529	1,380	1,269	1,180	1,204	1,373
Sophomores	699	704	827	767	856	848	989	1,052	1,043	1,022	997
Juniors	611	662	797	714	838	745	977	956	1,067	1,050	982
Seniors	1,064	1,054	1,244	1,270	1,266	1,284	1,380	1,409	1,501	1,455	1,539
Graduates	23	36	110	214	216	156	158	233	211	201	208
Total	4,592	5,026	5,159	5,640	6,007	5,725	6,025	5,963	6,095	5,881	6,048



Southern Utah University Headcount Enrollment By Gender 1993-94 through 2003-04



Prior School	1994-95	1995-96	1996-97	1997-98	1998-99	1999-00	2000-01	2001-02	2002-03	2003-04
Brigham Young University	16	18	30	21	26	31	18	25	14	21
College of Eastern Utah	29	41	45	43	43	32	30	43	25	52
Dixie State College	125	129	171	160	164	137	122	122	139	113
Salt Lake Community College	23	29	31	44	47	37	36	41	49	31
Snow College	60	79	72	74	115	103	101	104	91	120
University of Utah	26	26	31	32	20	13	15	17	19	24
Utah State University	26	23	28	26	33	31	25	29	28	29
Utah Valley State College	46	60	27	63	61	55	59	76	57	67
Weber State University	13	16	10	21	15	23	15	11	11	8
Total	364	421	445	484	524	462	421	468	433	465



**Summary of New Freshmen
by Utah High School Attended
1999-00 to 2003-04 (Fall)**

Institution Name	Institution State	1999-00	2000-01	2001-02	2002-03	2003-04
Alpine Life & Learning Center	UT	1			0	1
Alta High School	UT	13	8	16	8	7
Altamont High School	UT	1		4	0	0
American Fork High School	UT	10	7	5	1	14
Aspen Ranch School	UT					1
Bear River High School	UT	11	5	8	6	4
Beaver High School	UT	11	15	15	12	6
Ben Lomond High School	UT		2	1	0	0
Big Water School	UT				0	0
Bingham High School	UT	25	18	11	22	7
Bonneville High School	UT	1	5	2	2	7
Bountiful High School	UT	4	3	6	3	10
Box Elder High School	UT	7	10	15	5	2
Brighton High School	UT	10	8	7	5	21
Browning Academy	UT	1			0	0
Bryce Valley High School	UT	7	11	12	5	4
Cache High School	UT	1			0	0
Canyon View High School	UT	73	55	93	64	64
Carbon High School	UT	6	2	3	2	0
Cedar City High School	UT	102	108	103	103	95
Cedar Mountain Academy	UT	0	0	0	2	0
Cedar Ridge High School	UT	1			0	0
Central High School	UT	1			0	1
Christian Heritage School	UT					2
Clearfield High School	UT	2	7	1	4	1
Copper Hills High School	UT	16	11	17	7	7
Cottonwood High School	UT	9	5	10	4	9
Cyprus High School	UT	6	1	7	2	7
Davis High School	UT	9	9	12	13	6
Delta High School	UT	28	19	34	23	26
Dixie High School	UT	4	9	1	3	6
Duchesne High School	UT	4	4	1	0	0
Dugway High School	UT	3			0	0
East Carbon High School	UT				1	0
East High School	UT	2	5	5	2	2
Emery County High School	UT	14	10	6	3	0
Enterprise High School	UT	9	7	10	11	11
Escalante High School	UT	6	6	5	2	5
Fremont High School	UT	3	6	6	5	2
Garfield School	UT					1
Grand County High School	UT	1	9	6	6	4
Granger High School	UT	16	16	8	6	5
Granite High School	UT	6	2	1	1	3
Grantsville High School	UT	2	4	6	4	0
Green River High School	UT				0	1
Gunnison Valley High School	UT	3	5	7	7	5
Highland High School	UT	5	1	4	3	7
Hillcrest High School	UT	4	2	7	8	0
Horizonte Inst & Train Center	UT		1		0	0
Hunter High School	UT	3	15	8	11	11
Hurricane High School	UT	4	15	11	25	9

**Summary of New Freshmen
by Utah High School Attended
1999-00 to 2003-04 (Fall)**

Institution Name	Institution State	1999-00	2000-01	2001-02	2002-03	2003-04
Independence High School	UT	1			0	0
Intermountain Christian Academy	UT	1			0	0
Jordan High School	UT	13	7	17	19	9
Juab High School	UT	12	4	8	2	7
Juan Diego High School	UT	0	0	0	1	2
Judge Memorial High School	UT	3			0	1
Kanab High School	UT	6	11	11	10	18
Kearns High School	UT	7	5	4	6	2
Layton High School	UT	7	12	7	4	7
Lehi High School	UT	11	8	6	7	5
Logan High School	UT	4	3	1	2	1
Lone Peak High School	UT	13	9	16	14	12
Manila High School	UT	1			1	0
Manti High School	UT	1	5		2	2
Master Academy	UT				0	0
Meridian School	UT				1	0
Milford High School	UT	13	10	2	9	6
Millard High School	UT	14	10	15	10	6
Millcreek High School	UT		1		0	0
Monticello High School	UT	4	5	4	4	3
Morgan High School	UT	1	2	1	0	1
Mountain Crest High School	UT	3	1	7	4	6
Mountain High School	UT		1		0	0
Mountain View High School	UT	9	11	7	0	4
Murray High School	UT	19	21	8	7	8
Navajo Mountain High School	UT	0	0	0	1	0
North Sanpete High School	UT	1		1	1	3
North Sevier High School	UT	10	7	3	11	2
North Summit High School	UT		1	1	6	1
Northridge High School	UT	6	6	9	3	7
Ogden High School	UT	1		1	2	0
Olympus High School	UT	9	3	4	9	7
Orem High School	UT	10	8	7	6	2
Panguitch High School	UT	14	14	7	4	9
Park City High School	UT	5	2	1	0	3
Parowan Christian School	UT		1		0	0
Parowan High School	UT	19	14	17	28	12
Payson High School	UT	7	6	11	7	6
Pine View High School	UT	5	7	11	17	10
Piute High School	UT	9	3	3	7	5
Pleasant Grove High School	UT	11	11	11	6	7
Provo High School	UT	6	4	2	3	3
Realms Of Inquiry	UT		1		0	0
Rich High School	UT	1	1	1	2	3
Richfield High School	UT	12	26	26	13	14
Riverton High School	UT		6	8	11	17
Roy High School	UT	3	4	3	1	0
Saint Josephs High School	UT			1	0	0
Salt Lake Christian Academy	UT				0	0
San Juan High School	UT	4	2	3	3	8
Shiloah Valley Christian Schools	UT	3	1	2	0	0

**Summary of New Freshmen
by Utah High School Attended
1999-00 to 2003-04 (Fall)**

Institution Name	Institution State	1999-00	2000-01	2001-02	2002-03	2003-04
Sky View High School	UT	1	3	5	2	4
Skyline High School	UT	6	5	9	3	8
Snow Canyon High School	UT	9	12	11	6	11
Sorenson's Ranch School Inc.	UT				0	1
South Sevier High School	UT	13	9	9	14	13
South Summit High School	UT	2		3	2	0
Spanish Fork High School	UT	6	11	3	9	7
Springville High School	UT	8	21	11	4	15
Tabiona High School	UT				0	0
Taylorville High School	UT	13	14	8	11	6
The Waterford School	UT	1			0	0
Timpanogas High School	UT	12	9	10	2	1
Timpview High School	UT	5	4	2	4	5
Tintic High School	UT		3		1	1
Tooele High School	UT	19	13	10	11	15
Tuacahn High School for Per Arts	UT		4	2	3	3
Uintah High School	UT	7	6	6	3	5
Union High School	UT	9	3	8	4	4
Valley High School	UT	5	4	2	4	1
Viewmont High School	UT	11	10	10	7	4
Wasatch Academy	UT	1	2	1	1	1
Wasatch High School	UT	15	4	7	18	12
Wayne High School	UT	11	2	5	6	2
Weber Basin High School	UT				0	0
Weber High School	UT	2	1	4	5	0
Wendover High School	UT	1			0	0
West Desert High School	UT				1	1
West High School	UT	2			0	1
West Jordan High School	UT	8	11	11	1	10
Woodland Hills School	UT				0	0
Woods Cross High School	UT	4	11	8	4	6
Unknown	UT			1		0
Total	UT	895	842	867	761	730
States Other Than Utah		236	233	189	217	201
General Education Diploma		23	13	13	9	18
Total		1154	1088	1069	987	949

High School Graduates
(From Previous 12 Months)
From Nine Southern Utah Counties
Going on to SUU (Fall)
2001 to 2003

County	Total Graduates			Enrolled at SUU			Percent		
	2001	2002	2003	2001	2002	2003	2001	2002	2003
Beaver									
High School(s)									
Beaver	70	67	71	15	7	6	21%	10%	8%
Milford	26	27	26	2	7	5	8%	26%	19%
Garfield									
High School(s)									
Bryce Valley	28	20	20	12	4	3	43%	20%	15%
Escalante	18	18	18	5	2	4	28%	11%	22%
Panguitch	35	39	49	7	3	5	20%	8%	10%
Iron									
High School(s)									
Canyon View	204	161	189	93	47	56	46%	29%	30%
Cedar City	220	231	173	103	78	74	47%	34%	43%
Parowan	51	64	54	17	23	9	33%	36%	17%
Kane									
High School(s)									
Kanab	56	66	61	11	8	12	20%	12%	20%
Valley	26	42	28	2	4	1	8%	10%	4%
Washington									
High School(s)									
Dixie	210	227	255	1	2	6	0%	1%	2%
Enterprise	52	50	50	10	10	10	19%	20%	20%
Hurricane	200	158	205	11	23	8	6%	15%	4%
Pine View	328	331	325	11	15	10	3%	5%	3%
Snow Canyon	300	309	341	11	5	11	4%	2%	3%
Wayne									
High School(s)									
Wayne	48	37	37	5	5	1	10%	14%	3%
Millard									
High School(s)									
Delta	180	180	152	34	17	20	19%	9%	13%
Millard	86	96	75	15	9	3	17%	9%	4%
Piute									
High School(s)									
Piute	27	39	40	3	5	5	11%	13%	13%
Sevier									
High School(s)									
North Sevier	70	75	63	3	10	2	4%	13%	3%
Richfield	155	155	143	26	13	9	17%	8%	6%
South Sevier	100	81	99	9	8	11	9%	10%	11%

Source: Third Week Enrollment Report, SUU Registrar's Office,
and High School Graduate Totals

Associate Provost's Office

"Capture" Rate of New Freshmen (Fall)

Year	Utah H.S. grads intending to go on to college	New Resident Freshmen Enrolling at SUU			Percentage
2003	18,899		787		4%
2002	19,513		808		4%
2001	19,190		911		5%
2000	18,502		886		5%
1999	16,734		895		5%
1998	16,431		904		6%
1997***	14,666		829		6%
1996	12,201		780		6%
1995**	22,719		844		4%
1994*	13,118		750		6%
1993	15,783		730		5%
1992	15,344		732		5%
1991	15,873		747		5%
1990	12,829		509		4%
1989	13,610		477		4%
1988	14,205		521		4%
1987	12,602		568		5%
1986	12,251		482		4%

Source: September Intentions of Utah High School Seniors, Utah Office of Education.

*In 1994, the Utah High School Seniors Intentions Report was changed. The number of high school graduates intending to go on to college is representative of only those students planning to attend a 2-year or 4-year institution.

**In 1995, the number of Utah H.S. graduates intending to go on to college is figured as a percentage of the total number of graduates, whereas previous years were figured as a percentage of the total number of high school graduate respondents who were surveyed by the Utah Office of Education.

***In 1997, the number of Utah H.S. graduates intending to go on to college represents only those planning to attend a 2-year or 4-year institution and is a percentage of the total number of high school graduate respondents who were surveyed by the Utah Office of Education.

Utah Counties Providing Greatest Percentage of New Freshmen Enrollment (Fall) 1999 to 2003

	1999	2000	2001	2002	2003
Iron	20%	19%	21%	24%	23%
Salt Lake	17%	16%	16%	15%	17%
Utah	10%	10%	8%	7%	9%
Washington	3%	5%	4%	7%	5%
Davis	4%	5%	5%	4%	4%
Millard	4%	3%	5%	3%	3%
Sevier	3%	4%	3%	4%	3%
Garfield	2%	3%	2%	1%	2%
Kane	1%	1%	1%	1%	2%
Tooele	2%	2%	2%	2%	2%

Source: Third-Week Enrollment Report, SUU Registrar's Office.

**Summary of New Transfer Students
by Prior School Attended
1999-00 to 2003-04 (Fall)**

Prior School	1999-00	2000-01	2001-02	2002-03	2003-04
Brigham Young University	31	18	25	14	21
Brigham Young University-Idaho	24	39	18	9	7
College of Eastern Utah	32	30	43	25	52
Dixie College	137	122	122	139	113
Salt Lake Community College	37	36	41	49	31
Snow College	103	101	104	91	120
University of Utah	13	15	17	19	24
Utah State University	31	25	29	28	29
Utah Valley State College	55	59	76	57	67
Weber State University	23	15	11	11	8
Other	117	99	132	100	125
Total	603	559	618	542	597

Source: Third-Week Enrollment Report, SUU Registrar's Office.

**Top Utah Feeder High Schools to SUU
2001 - 2003**

2001		2002		2003	
Cedar	103	Cedar	103	Cedar	95
Canyon View	93	Canyon View	64	Canyon View	64
Delta	34	Parowan	28	Delta	26
Richfield	26	Hurricane	25	Brighton	21
Copper Hills	17	Delta	23	Kanab	18
Jordan	17	Bingham	22	Riverton	17
Parowan	17	Jordan	19	Springville	15
Alta	16	Wasatch	18	Tooele	15
Lone Peak	16	Pine View	17	American Fork	14
Beaver	15	Lone Peak	14	Richfield	14
Box Elder	15	South Sevier	14	South Sevier	13
Millard	15	Richfield	13	Lone Peak	12
Bryce Valley	12	Davis	13	Parowan	12
Davis	12	Beaver	12	Wasatch	12
		Hunter	11	Enterprise	11
		North Sevier	11	Hunter	11
		Riverton	11	Snow Canyon	11
		Taylorsville	11		
		Tooele	11		
		Enterprise	11		

Source: Third-Week Enrollment Report, SUU Registrar's Office

**All Students by Class and Gender
1999-00 to 2003-04 (Fall)**

Class	1999-00	%	2000-01	%	2001-02	%	2002-03	%	2003-04	%
New Freshmen *										
Male			393		409		382		402	
Female			651		684		567		547	
Total			1,044	17.51%	1,093	17.93%	949	16.14%	949	15.69%
Other Freshmen										
Male	1,070		608		543		511		580	
Female	1,451		661		637		693		793	
Total	2,521	41.84%	1,269	21.28%	1,180	19.36%	1,204	20.47%	1,373	22.70%
Sophomores										
Male	413		444		457		434		448	
Female	576		608		586		588		549	
Total	989	16.41%	1,052	17.64%	1,043	17.11%	1,022	17.38%	997	16.48%
Juniors										
Male	447		455		471		459		467	
Female	530		501		596		591		515	
Total	977	16.22%	956	16.03%	1,067	17.51%	1,050	17.85%	982	16.24%
Seniors										
Male	635		638		721		688		726	
Female	745		771		780		767		813	
Total	1,380	22.90%	1,409	23.63%	1,501	24.63%	1,455	24.74%	1,539	25.45%
Graduate										
Male	69		96		113		115		108	
Female	89		137		98		86		100	
Total	158	2.62%	233	3.91%	211	3.46%	201	3.42%	208	3.44%
Total										
Male/Female	6,025	100.00%	5,963	100.00%	6,095	100.00%	5,881	100.00%	6,048	100.00%
Total										
Male	2,634		2,634		2,714		2,589	44.02%	2,731	45.16%
Female	3,391		3,329		3,381		3,292	55.98%	3,317	54.84%

Source: Third-Week Enrollment Report, SUU Registrar's Office.

* Prior to FY 2000-01, New Freshmen and Other Freshmen figures were reported together as a Freshmen total.

**All Students by Age and Gender
1999-00 to 2003-04 (Fall)**

Age Group		1999-00	%	2000-01	%	2001-02	%	2002-03	%	2003-04	%
18 and under	Male	417		438		434		416		426	
	Female	714		781		835		728		710	
	Total	1,131	18.77%	1,219	20.44%	1,269	20.82%	1,144	19.45%	1,136	18.78%
19 - 20	Male	295		261		260		254		282	
	Female	1,008		969		973		957		877	
	Total	1,303	21.63%	1,230	20.63%	1,233	20.23%	1,211	20.59%	1,159	19.16%
21 - 22	Male	689		627		630		581		585	
	Female	606		666		689		653		618	
	Total	1,295	21.49%	1,293	21.68%	1,319	21.64%	1,234	20.98%	1,203	19.89%
23 - 24	Male	549		618		662		602		616	
	Female	267		224		263		268		283	
	Total	816	13.54%	842	14.12%	925	15.18%	870	14.79%	899	14.86%
25 - 29	Male	415		429		466		436		493	
	Female	226		220		202		212		243	
	Total	641	10.64%	649	10.88%	668	10.96%	648	11.02%	736	12.17%
30 - 34	Male	112		104		111		118		128	
	Female	118		102		100		110		131	
	Total	230	3.82%	206	3.45%	211	3.46%	228	3.88%	259	4.28%
35 - 39	Male	43		60		55		63		63	
	Female	107		88		72		75		90	
	Total	150	2.49%	148	2.48%	127	2.08%	138	2.35%	153	2.53%
Over 39	Male	114		97		96		119		138	
	Female	345		279		247		289		365	
	Total	459	7.62%	376	6.31%	343	5.63%	408	6.94%	503	8.32%
Total	Male	2,634		2,634		2,714		2,589		2,731	
	Female	3,391		3,329		3,381		3,292		3,317	
	Total	6,025	100.00%	5,963	100.00%	6,095	100.00%	5,881	100.00%	6,048	100.00%

Source: Third-Week Enrollment Report, SUU Registrar's Office.

Entering Freshmen by Age and Gender
1999-99 to 2003-04 (Fall)

Age Group		1999-00	%	2000-01	%	2001-02	%	2002-03	%	2003-04	%
18 and under	Male	313		279		268		253		259	
	Female	572		570		599		488		451	
	Total	885	77.56%	849	81.32%	867	79.32%	741	78.08%	710	74.82%
19 - 20	Male	67		48		64		58		55	
	Female	86		67		68		63		64	
	Total	153	13.41%	115	11.02%	132	12.08%	121	12.75%	119	12.54%
21 - 22	Male	61		54		65		59		64	
	Female	9		11		8		9		8	
	Total	70	6.13%	65	6.23%	73	6.68%	68	7.17%	72	7.59%
23 - 24	Male	6		6		11		10		10	
	Female	4		2		2		3		5	
	Total	10	0.88%	8	0.77%	13	1.19%	13	1.37%	15	1.58%
25 - 29	Male	2		4		1		1		9	
	Female	9				5		1		10	
	Total	11	0.96%	4	0.38%	6	0.55%	2	0.21%	19	2.00%
30 - 34	Male	3						0		3	
	Female	1		1		1		1		3	
	Total	4	0.35%	1	0.10%	1	0.09%	1	0.11%	6	0.63%
35 - 39	Male	1		1				0		0	
	Female	3						0		1	
	Total	4	0.35%	1	0.10%	0	0.00%	0	0.00%	1	0.11%
Over 39	Male			1				1		2	
	Female	4				1		2		5	
	Total	4	0.35%	1	0.10%	1	0.09%	3	0.32%	7	0.74%
Total	Male	453		393		409		382		402	
	Female	688		651		684		567		547	
	Total	1,141	100.00%	1,044	100.00%	1,093	100.00%	949	100.00%	949	100.00%

All Students by County of Origin
1999-00 to 2003-04 (Fall)

County	1999-00	2000-01	2001-02	2002-03	2003-04
Beaver	167	163	173	162	146
Box Elder	34	41	51	54	40
Cache	48	47	41	42	36
Carbon	65	49	44	41	47
Daggett	1	1	1	2	1
Davis	133	147	144	127	117
Duchesne	51	36	46	38	23
Emery	82	60	66	58	75
Garfield	138	172	139	115	119
Grand	16	41	31	27	41
Iron	1,559	1,520	1,622	1,681	1,698
Juab	54	39	39	33	39
Kane	89	106	109	97	115
Millard	185	180	193	146	145
Morgan	8	12	7	8	3
Piute	36	33	29	19	23
Rich	34	2	4	4	6
Salt Lake	687	636	635	603	595
San Juan	83	78	62	69	57
Sanpete	107	134	129	121	128
Sevier	229	266	229	248	240
Summit	24	15	14	18	15
Tooele	68	77	73	58	64
Uintah	32	26	30	24	27
Utah	402	386	422	365	438
Wasatch	36	27	19	33	32
Washington	603	569	519	517	547
Wayne	39	60	49	40	49
Weber	38	51	64	58	55
Out of State - Resident	391	481	585	552	576
Total Utah Residents	5,439	5,455	5,569	5,360	5,497
Total Nonresidents	586	508	526	521	551
Total Students	6,025	5,963	6,095	5,881	6,048

Entering Freshmen by County of Origin
1999-00 to 2003-04 (Fall)

County	1999-00	2000-01	2001-02	2002-03	2003-04
Beaver	22	26	21	22	13
Box Elder	17	15	22	9	6
Cache	14	7	12	8	10
Carbon	6	2	3	4	0
Daggett	1	0	0	1	0
Davis	41	50	51	37	37
Duchesne	14	7	13	4	4
Emery	15	10	6	2	1
Garfield	25	31	20	11	20
Grand	1	9	6	6	4
Iron	223	199	229	228	221
Juab	12	7	7	3	8
Kane	12	14	14	14	19
Millard	45	30	51	31	28
Morgan	1	2	1	0	1
Piute	8	2	8	3	5
Rich	1	1	1	2	3
Salt Lake County	191	171	172	142	159
San Juan	8	7	7	6	11
Sanpete	5	11	10	11	12
Sevier	32	42	36	38	25
Summit	7	3	5	9	3
Tooele	26	18	18	15	16
Uintah	6	6	6	3	5
Utah County	114	108	88	70	82
Wasatch	16	5	6	18	12
Washington	30	48	44	62	47
Wayne	11	5	6	7	3
Weber	11	24	19	15	11
Out of State - Resident	28	26	29	27	21
Total Utah Residents	943	886	911	808	787
Total Non-Resident	198	158	182	141	162
Total	1,141	1,044	1,093	949	949

All Students by State of Origin
1999-00 to 2003-04 (Fall)

State	1999-00	2000-01	2001-02	2002-03	2003-04
Alabama	1	0	0	0	0
Alaska	6	5	6	7	7
American Samoa	0	1	1	1	0
Arizona	67	72	97	78	77
Arkansas	0	1	0	0	0
California	108	120	143	132	114
Colorado	24	31	38	33	34
Connecticut	2	3	4	3	1
Delaware	0	0	0	1	0
Florida	3	5	9	11	12
Georgia	0	0	2	2	2
Hawaii	4	6	9	7	7
Idaho	38	58	51	42	39
Illinois	5	6	5	9	8
Indiana	6	5	3	2	3
Iowa	3	3	2	3	2
Kansas	4	2	3	2	2
Kentucky	2	2	1	1	2
Louisiana	2	3	2	6	3
Maine	1	2	4	3	2
Maryland	5	6	7	4	2
Massachusetts	3	1	2	0	2
Michigan	8	6	5	6	5
Minnesota	8	12	9	10	13
Mississippi	1	1	2	2	2
Missouri	7	4	5	6	5
Montana	7	4	6	6	7
Nebraska	4	6	6	5	3
Nevada	361	354	362	372	422
New Hampshire	2	2	3	2	1
New Jersey	1	2	3	4	4
New Mexico	16	16	20	19	23
New York	4	9	11	10	11
North Carolina	4	2	5	9	10
North Dakota	3	5	5	5	3
Ohio	2	4	6	5	6
Oklahoma	0	3	2	2	3
Oregon	7	9	14	12	12
Pennsylvania	5	5	6	7	6
Rhode Island	1	2	2	1	1
South Carolina	1	1	0	1	0
South Dakota	1	2	3	3	1
Tennessee	0	0	3	3	1
Texas	15	14	17	20	24
Vermont	1	0	0	1	1

All Students by State of Origin
1999-00 to 2003-04 (Fall)

State	1999-00	2000-01	2001-02	2002-03	2003-04
Virgin Islands				1	1
Virginia	11	17	25	13	16
Washington	10	13	16	13	12
West Virginia	0	2	1	3	1
Wisconsin	1	4	8	8	12
Wyoming	16	17	27	26	34
Foreign	172	140	104	82	83
Not Specified				1	1
Total States Other Than Utah	953	988	1,065	1,005	1,043
Utah	5,072	4,975	5,030	4,876	5,005
Total	6,025	5,963	6,095	5,881	6,048

**Entering Freshmen by State of Origin
1999-00 to 2003-04 (Fall)**

State	1999-00	2000-01	2001-02	2002-03	2003-04
Alaska	2	0	1	0	3
American Samoa	0	1	0	0	0
Arizona	22	17	22	17	12
Arkansas	0	1	0	0	0
California	24	17	25	22	17
Colorado	10	5	7	6	9
Connecticut	1	1	0	1	0
Florida	0	2	2	1	2
Georgia	0	0	1	0	1
Hawaii	0	2	5	0	1
Idaho	7	9	4	2	8
Illinois	0	2	1	0	3
Indiana	0	0	1	0	1
Iowa	2	1	0	0	0
Kansas	2	0	0	0	0
Kentucky	0	0	0	0	1
Louisiana	0	1	0	1	0
Maine	0	1	0	0	0
Maryland	2	3	3	1	0
Massachusetts	0	0	0	0	2
Michigan	2	1	1	0	1
Minnesota	3	3	3	2	4
Mississippi	0	0	0	0	0
Missouri	2	1	2	1	0
Montana	2	0	0	0	1
Nebraska	0	1	0	2	0
Nevada	109	76	85	71	71
New Hampshire	1	1	1	1	0
New Jersey	0	0	0	2	0
New Mexico	4	1	4	3	5
New York	0	0	0	2	1
North Carolina	1	1	1	2	2
North Dakota	0	0	0	1	1
Ohio	0	0	1	1	0
Oklahoma	0	2	0	1	0
Oregon	1	2	5	0	0
Pennsylvania	2	0	2	1	2
Rhode Island	0	2	0	0	0
South Carolina	1	0	0	0	0
South Dakota	0	0	0	1	0
Tennessee	0	0	0	0	0
Texas	1	1	2	7	2
Vermont	1	0	0	0	0
Virginia	2	8	3	1	2
Washington	1	4	3	0	1
West Virginia	0	0	0	1	0
Wisconsin	0	1	2	1	3
Wyoming	5	5	9	3	8
Foreign	8	10	9	4	11
Not Specified				1	0
Total States Other Than Utah	218	183	205	160	175
Utah	923	861	888	789	774
Total	1,141	1,044	1,093	949	949

**All Students by Country of Citizenship
1999-00 to 2003-04 (Fall)**

Country	1999-00	2000-01	2001-02	2002-03	2003-04
Alberta, Canada	0	0	1	0	3
Argentina	0	0	1	1	
Australia	0	1	0	1	
Bermany					1
Brazil	0	0	0	1	
Br. Columbia, Canada	0	1	0	0	
Canada	3	1	0	1	
China					2
Columbia	6	4	2	2	1
Czechoslovakia				2	
Ecuador	0	1	2	0	
Egypt	0	0	2	3	
El Salvador	0	0	1	1	1
England	2	1	0	1	1
Fiji					1
Germany	0	0	1	1	
Ghana	0	1	1	1	1
India	0	0	1	0	1
Indonesia	0	0	1	0	
Iran				1	1
Japan	90	66	57	46	51
Kenya	0	1	1	0	
Korea	25	19	13	7	
Laos	0	0	1	0	
Liberia				1	1
Slovakia					1
Malaysia	0	1	1	0	
Mexico	1	2	5	5	6
Netherlands	0	0	1	0	1
Northern Ireland				1	1
Norway	0	0	1	1	
Ontario, Canada	0	1	1	0	1
People's Rep. of China	0	2	2	2	
Peru	0	0	3	1	2
Philippines	1	1	3	0	1
Portugal	0	1	0	0	
Russia					2
Saskatchewan, Canada	0	0	1	0	
Saudi Arabia	0	1	2	0	
South Africa	0	0	0	1	1
South Korea					3
Soviet Union	1	2	5	5	
Spain	1	0	0	0	
Switzerland	2	1	1	1	
Taiwan	12	7	10	11	11
Tonga	0	0	2	0	2
Turkey	0	1	1	1	
Ukraine					1
Venezuela	0	1	0	1	1
Yemen (Sanaa)	0	1	2	2	
Subtotal	144	118	126	102	99
Not Specified			1	1	4
United States			5,968	5,778	5,945
Total			6,095	5,881	6,048

Entering Freshmen by Country of Citizenship
1999-00 to 2003-04 (Fall)

Country	1999-00	2000-01	2001-02	2002-03	2003-04
Alberta, Canada					1
Brazil				1	
Canada	1	0	0	1	
Czechoslovakia	0	0	0	1	
Columbia	0	0	1	0	
El Salvador	0	0	1	0	
Ghana	0	1	0	0	
Indonesia	0	0	1	0	
Japan	5	4	0	0	6
Korea	0	1	3	1	
Mexico					2
Ontario, Canada					1
Peru					1
Saudi Arabia	0	0	0	0	
South Africa	0	0	0	1	
Soviet Union	0	0	1	0	
Taiwan	0	0	2	1	2
Tonga	0	0	1	0	
Turkey	0	0	1	0	
Venezuela	0	0	0	1	
Yemen (Sanaa)	0	1	1	0	
Subtotal	6	7	12	7	13
Not Specified					2
United States			1,081	942	934
Total			1,093	949	949

Source: Third-Week Enrollment Report, SUU Registrar's Office.

Veterans Enrolled
1999-00 to 2003-04 (Fall)

Veterans Enrolled	1999-00	2000-01	2001-02	2002-03	2003-04
Nonvocational or Technical	24	25	16	19	28
Pre-Professional or Vocational	1	5	4	7	7
TOTAL	25	30	20	26	35
All Other Students	6,000	5,933	6,075	5,855	6,013
TOTAL	6,025	5,963	6,095	5,881	6,048
Percent Veterans	0.4%	0.5%	0.3%	0.4%	0.6%

Source: Third-Week Enrollment Report, SUU Registrar's Office.

**All Students by Ethnic Background and Gender
1999-00 to 2003-04 (Fall)**

Ethnic Background		1999-00	2000-01	2001-02	2002-03	2003-04
American Indian or Alaskan Native	Male	23	22	24	25	26
	Female	47	35	39	43	38
	Total	70	57	63	68	64
Asian	Male	96	77	68	49	56
	Female	86	68	58	54	62
	Total	182	145	126	103	118
Black	Male	24	24	20	21	25
	Female	11	11	12	13	19
	Total	35	35	32	34	44
Hispanic	Male	43	47	51	46	45
	Female	62	59	55	56	61
	Total	105	106	106	102	106
Native Hawaiian or Pacific Islander*	Male	17	22	19	15	17
	Female	12	7	7	10	7
	Total	29	29	26	25	24
Other	Male	1	7	8	11	9
	Female	5	3	10	8	10
	Total	6	10	18	19	19
White (Non-hispanic)	Male	2,430	2,435	2,470	2,361	2,454
	Female	3,168	3,146	3,172	3,058	3,010
	Total	5,598	5,581	5,642	5,419	5,464
Not Specified	Male			54	61	98
	Female			28	50	110
	Total			82	111	208
Asian or Pacific Islander	Male					1
	Female					0
	Total					1
Total Students	Male	2,634	2,634	2,714	2,589	2,731
	Female	3,391	3,329	3,381	3,292	3,317
	Total	6,025	5,963	6,095	5,881	6,048

*Prior to 1999-00 included in Asian or Pacific Islander total.

Source: Report to National Center for Education Statistics, SUU Registrar's Office.

Total Headcount Enrollment by Major & CIP Code
Fall 2000-01 to 2003-04

Proposed CIP Code	Major	2000-01	2001-02	2002-03	2003-04
52.0301	Accounting	113	104	107	123
2.0101	Agriculture Science and Industries	28	31	43	
01.0000	Agriculture, General		1		42
50.0701	Art	76	99	61	42
50.0701	Art Composite			46	40
13.1302	Art Education				1
13.1302	Art Teacher Education	14			3
50.0704	Arts Administration		8	11	4
51.0913	Athletic Training		7	40	48
47.0604	Automotive Mechanics Technology	17	16	26	20
26.0101	Biology	257	285	278	277
13.1322	Biology Teacher Education	9	16	18	25
14.0501	Biomedical Engineering				
52.0201	Business Administration & Management	18	34	19	24
13.1303	Business Education Composite	32	36	12	2
48.0703	Cabinet Making and Millwork	2	3	5	4
14.0701	Chemical Engineering	1	2	2	
40.0501	Chemistry			5	32
13.1323	Chemistry Teacher Education		2		4
40.0501	Chemistry-Professional		42	10	
40.0501	Chemistry-Professional Health Care	45			
19.0706	Child Development				17
15.1304	Civil Design		2	1	1
14.0801	Civil Engineering	6	5	8	5
52.0408	Clerical Technology	8	5	1	
13.1331	Communication Education	5	4	2	2
9.0101	Communications	300	293	279	249
14.0901	Computer Engineering	1	3		1
11.0401	Computer Information Systems	124	135	19	4
52.1204	Computer Information Systems		12		
11.0701	Computer Science	99	91	76	54
13.1321	Computer Teacher Education				
46.0201	Construction Technology	33	25	27	13
46.0403	Construction Management	5	14	19	36
43.0104	Criminal Justice	200	205	238	239
50.0301	Dance	56	51	36	34
13.1324	Dance Teacher Education				7
15.1302	Design Technology (CAD/CAM)	12	15	11	8
20.0102	Early Childhood Development	18	24	21	
13.121	Early Childhood Education				
40.0703	Earth Systems	1			
45.0601	Economics	1	1	3	9
13.0101	Education		145	146	155
13.1004	Education of the Gifted and Talented*				
14.1001	Electrical, Electronics & Communications Engineering	2	1	1	3
46.0302	Electrician	26	27	2	22
47.0105	Electronic Technology	8	7	10	7
13.0401	Elementary & Secondary Principal				
13.1202	Elementary Education & Teaching	765	665	607	536
14.1301	Engineering Science (Integrated)				
15.1319	Engineering Technology	74	73	52	73
23.0101	English Language and Literature	130	136	129	102
13.1305	English Teacher Education				21
14.1401	Environmental Engineering	1			
13.1308	Family & Consumer Science Teacher Education	20	22	23	29
19.0101	Family & Consumer Sciences	101	105	115	114
52.0801	Finance	31	27	26	27

Total Headcount Enrollment by Major & CIP Code
Fall 2000-01 to 2003-04

Proposed CIP Code	Major	2000-01	2001-02	2002-03	2003-04
16.0901	French Language and Literature	4	3	2	2
13.1325	French Teacher Education				
45.0799	Geographic Information Systems				
40.0601	Geology	24	16	17	23
40.0601	Geology and Earth Science		1	3	2
16.0501	German Language and Literature	9	11	16	12
13.1326	German Teacher Education				
50.0402	Graphic Design			3	29
45.9999	Graphic Information Systems				1
54.0101	History	95	98	97	78
13.1328	History Teacher Education				16
11.0301	Information / Office Systems				1
11.0401	Information Systems			115	102
11.0401	Information Systems Applications			16	8
13.0501	Instructional Media Design (Library Media)				
13.0501	Instructional Media Design*				
14.1301	Integrated Engineering		18	44	38
50.0408	Interior Design	22	18	16	7
	International Business				
45.0901	International Relations				
1.0302	Livestock Farm Management	17	19	9	9
48.0501	Machine Tool Technology (CNC)	4	12	12	1
52.0201	Management	45	37	34	56
52.1201	Management Information Systems	11	10	2	
52.0601	Managerial Economics	5	3	1	
52.1401	Marketing	7	13	27	44
	Marketing Teacher Education				
14.1801	Materials Engineering				
27.0101	Mathematics	39	49	38	32
13.1311	Mathematics Teacher Education	16	25	28	23
14.1901	Mechanical Engineering	4	4	4	6
52.0404	Medical Secretary	4	7	10	9
51.0708	Medical Transcription	14	14	11	11
29.0101	Military Science				
50.0901	Music	110	104	95	78
13.1312	Music Teacher Education				16
51.1601	Nursing (through WSU)	76	75	120	193
51.1614	Nursing Assistant Training	10	14	8	1
52.0204	Office Management Technology	5	4	1	
22.0302	Paralegal	18	12	12	13
13.1314	Physical Education Teaching and Coaching	139	164	168	153
40.0101	Physical Science Education Composite		6	2	
13.1316	Physical Science Teacher Education	18	10	10	11
	Physics				
	Physics Teacher Education				
46.0501	Plumbing Apprenticeship			9	
46.0503	Plumbing Technology	15	11		
45.1001	Political Science	52	63	74	78
13.1317	Political Science Education				
51.0899	Pre-Allied Health	5	4	6	10
52.0101	Pre-Business	541	524	446	360
40.0501	Pre-Chemistry			39	38
51.1101	Pre-Dentistry Studies	34	44	48	49
14.0101	Pre-Engineering, General	22	22	11	30
3.0501	Pre-Forestry	15	7	11	5
22.0001	Pre-Law	17	22	16	21
51.1199	Pre-Medical Technology	1			5

Total Headcount Enrollment by Major & CIP Code
Fall 2000-01 to 2003-04

Proposed CIP Code	Major	2000-01	2001-02	2002-03	2003-04
51.1102	Pre-Medicine Studies	96	86	70	70
51.1103	Pre-Pharmacy Studies	17	21	17	20
51.1199	Pre-Physical Therapy	48	29	21	16
51.1104	Pre-Veterinary Studies	17	24	12	10
42.0101	Psychology	238	238	220	254
13.1205	Secondary Education and Teaching	71			
52.0401	Secretarial Technology	22	19	4	
52.0299	Small Business Management Technology	6	10		
45.0101	Social Sciences		20	21	
13.1317	Social Sciences Teacher Education	24		82	30
45.1101	Sociology	85	89		88
13.1317	Sociology Education				
16.0905	Spanish Language and Literature	39	35	30	23
13.1330	Spanish Language Teacher Education				9
13.1001	Special Education Teaching (mild/moderate)	9	7	3	2
13.1309	Technology Teacher Education	35	37	32	28
50.0501	Theatre Arts	133	140	144	123
13.1324	Theatre Arts/Drama Teacher Education				6
	Subtotal	4,877	4,978	4,772	4,709
	Continuing Education	615	612	653	800
24.0102	General Education	402	496	444	435
30.9999	Multi/interdisciplinary Studies	3	9	4	10
	Undecided	66			86
	Utah Electronic College			8	8
	Total	5,963	6,095	5,881	6,048

ENROLLMENT STATISTICS
SCHOOL OF CONTINUING AND PROFESSIONAL STUDIES

	1997~98		1998~99		1999~00		2000~01		2001~02		2002~03	
	CREDIT	NON	CREDIT	NON	CREDIT	NON	CREDIT	NON	CREDIT	NON	CREDIT	NON
EVENING/ENRICHMENT PROGRAMS	1,133	243	1,212	116	888	367	893	380	1,167	654	741	67
<i>Summer School</i>	4,224		4,428		4,029		4,525		4,737		Change of Responsibility	
CONFERENCE SERVICES	158	28,696	149	30,066	314	39,024	357	43,006	351	48,677	381	40,640
<i>Concurrent</i>	271		235		198		264	397	255	396	257	
<i>CEU's</i>		290		245		150		3.2		2.4		2.4
DISTANCE LEARNING												
<i>Independent Study</i>					342		417		627		396	
<i>At-Site</i>	3,477	4	3,934		5,074		6,393		6,730		9,722	
<i>Internet</i>			173		236		463		449		583	
CONCURRENT			222		328							
<i>Internet</i>			110		143		197		124		226	
<i>Adjunct</i>	414		286		580		620		411		761	
<i>Summer School Concurrent</i>					51		108		92		111	
EDNET												
<i>Concurrent</i>			217		320		389		344		201	
<i>Undergraduate</i>	330		339		710		617		307		230	
<i>Graduate</i>					104		197		286		338	
SNOW COLLEGE SOUTH CENTER	360		509		293		287		189		160	
ST. GEORGE UNIVERSITY CENTER	1681		1277		873		436		567		173	
TOTALS	12,048	29,233	13,091	30,427	14,483	39,541	16,163	43,786	16,636	49,729	14,280	40,709