

# 1998 Fall Factbook

SUU Enrollment History and Projections 1989-90 to 2008-09

Analysis of Student Mix

Academic Year SCH Produced Per FTE Faculty by Department

Department Status and Productivity, 1998

Degrees Conferred, 1990-1998

SUU Career Services Survey, 1997

Average Faculty Loads Per Headcount

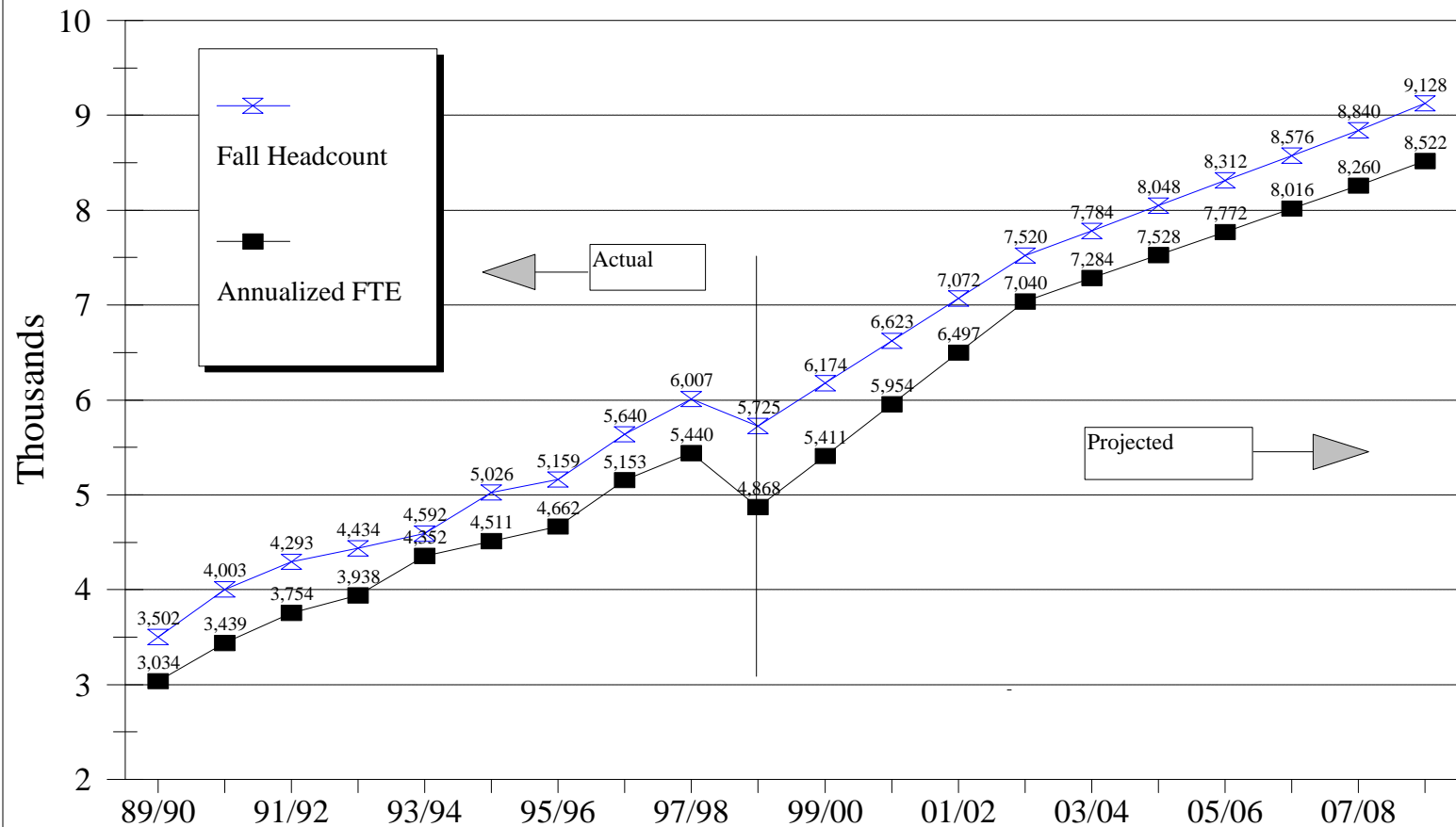
SUU Building Inventory

# Southern Utah University

## Enrollment History and Projections

from 1989-90 to 2008-09

### Budget-Related and Self-Supporting Enrollments



Source: Utah System of Higher Education Enrollment Projections. Five-year forecast extrapolated on an annual basis.

# ANALYSIS OF STUDENT MIX

## Fall 1996 to 1998

	1996 Number	1996 Percent	1997 Number	1997 Percent	1998 Number	1998 Percent
<b>AGE</b>						
18 and under	936	16.6%	1,169	19.5%	1,046	18.3%
19-20	1,241	22.0%	1,309	21.8%	1,348	23.5%
21-22	1,115	19.7%	1,158	19.3%	1,240	21.7%
23-24	713	12.6%	795	13.2%	747	13.0%
25-29	602	10.7%	604	10.1%	582	10.2%
30-34	236	4.2%	232	3.9%	204	3.6%
35-39	207	3.7%	202	3.4%	124	2.2%
Over 39	590	10.5%	538	9.0%	434	7.6%
<b>TOTALS</b>	<b>5,640</b>	<b>100.0%</b>	<b>6,007</b>	<b>100.0%</b>	<b>5,725</b>	<b>100.0%</b>
<b>SEX</b>						
Male	2,408	42.7%	2,616	43.5%	2,495	43.6%
Female	3,232	57.3%	3,391	56.5%	3,230	56.4%
<b>ETHNIC BACKGROUND</b>						
American Indian/Alaskan Native	56	1.0%	56	0.9%	68	1.2%
Asian or Pacific Islander	146	2.6%	176	2.9%	171	3.0%
Black	40	0.7%	44	0.7%	33	0.6%
Hispanic	75	1.3%	68	1.1%	85	1.5%
White (Non-hispanic)	5,323	94.4%	5,663	94.3%	5,368	93.8%
<b>TOTALS</b>	<b>5,640</b>	<b>100.0%</b>	<b>6,007</b>	<b>100.0%</b>	<b>5,725</b>	<b>100.0%</b>
<b>MARITAL STATUS</b>						
Married	1,470	26.1%	1,509	25.1%	1,219	21.3%
Single	4,168	73.9%	4,497	74.9%	4,505	78.7%
Widowed	2	--	1		1	0.0%
<b>RESIDENCY</b>						
Non-Resident	581	10.3%	648	10.8%	554	9.7%
Resident	5,059	89.7%	5,359	89.2%	5,171	90.3%
<b>LEVEL</b>						
Undergraduate					5,569	97.3%
Graduate					156	2.7%
<b>ENROLLMENT STATUS</b>						
Part Time	1,550	27.4%	1,601	26.7%	1,306	22.8%
Full Time	4,090	72.6%	4,406	73.3%	4,419	77.2%
<b>TOTALS</b>	<b>5,640</b>	<b>100.0%</b>	<b>6,007</b>	<b>100.0%</b>	<b>5,725</b>	<b>100.0%</b>

Source: Third-Week Enrollment Report, SUU Registrar's Office.

Note: Percentages may not total due to rounding.

**ACADEMIC YEAR SCH PRODUCED  
PER FTE FACULTY BY DEPARTMENT  
FALL 1994-95 TO 1997-98**

DEPARTMENT	SCH	1994-95 FTE	SCH/FTE	SCH	1995-96 FTE	SCH/FTE	SCH	1996-97 FTE	SCH/FTE	SCH	1997-98 FTE	SCH/FTE	SCH/TEACHING FTE 4-YR. AVG.
Arts & Letters	1,885	1.5	1,256.7	--	1.2	--	--	0.7	0.0	--	0.7	0.0	--
Beh./Soc. Sciences	--	--	--	--	--	--	--	--	--	--	--	--	--
Language and Literature	19,898	20.5	970.6	21,257	24.5	867.6	23,799	22.2	1,072.0	26,571	23.5	1,130.7	1,010.2
Psychology	5,960	6.7	889.6	8,589	6.0	1,431.6	8,979	7.4	1,213.4	10,199	7.7	1,324.5	1,619.7
Social Sciences	8,904	11.5	774.3	16,099	13.9	1,158.2	16,872	12.8	1,318.1	18,771	13.8	1,360.2	1,536.9
<b>HUMANITIES &amp; SOCIAL SCIENCE</b>	<b>36,647</b>	<b>40.2</b>	<b>911.6</b>	<b>45,945</b>	<b>45.6</b>	<b>983.4</b>	<b>49,650</b>	<b>43.1</b>	<b>1,152.0</b>	<b>55,541</b>	<b>45.7</b>	<b>1,215.3</b>	<b>1,065.6</b>
Art	3,851	5.2	740.6	4,135	4.7	879.8	4,678	4.9	954.7	4,876	5.0	975.2	887.6
Music	6,133	7.5	817.7	6,685	7.3	915.8	6,435	8.2	784.8	6,925	10.0	692.5	802.7
Theatre	8,904	9.1	978.5	8,235	8.5	968.8	8,228	9.3	884.7	9,660	11.0	878.2	927.5
<b>PERFORMING &amp; VISUAL ARTS</b>	<b>18,888</b>	<b>21.8</b>	<b>866.4</b>	<b>19,055</b>	<b>20.5</b>	<b>929.5</b>	<b>19,341</b>	<b>22.4</b>	<b>863.4</b>	<b>21,461</b>	<b>26.0</b>	<b>825.4</b>	<b>871.2</b>
Business	17,122	18.6	920.5	23,010	23.3	987.6	26,031	26.6	978.6	26,538	25.6	1,036.6	980.8
Business Education/CIS*	7,347	10.9	674.0	4,459	6.0	743.2	4,600	6.8	676.5	5,334	8.3	642.7	659.6
Business, Tech., Comm.	50	--	--	--	--	--	--	--	--	--	--	--	--
Communication	9,834	11.3	870.3	10,228	10.9	938.4	10,697	10.8	990.5	12,398	11.0	1,127.1	981.5
STIT	1,013	2.0	506.5	--	--	--	--	2.4	0.0	--	3.0	0.0	--
Technology	7,756	12.4	625.5	8,357	12.5	668.6	9,888	11.4	867.4	11,063	10.3	1,074.1	808.9
<b>BUS/TECH/COMM</b>	<b>43,122</b>	<b>55.2</b>	<b>781.2</b>	<b>46,054</b>	<b>52.7</b>	<b>873.9</b>	<b>51,216</b>	<b>58.0</b>	<b>883.0</b>	<b>55,333</b>	<b>58.2</b>	<b>950.7</b>	<b>872.2</b>
Physical Education	10,230	8.3	1,232.5	10,687	8.0	1,335.9	10,036	8.3	1,209.2	10,651	8.3	1,283.3	1,265.2
Teacher Education	18,145	20.9	868.2	26,285	27.8	963.7	28,500	32.4	879.6	30,212	32.4	932.5	911.0
<b>EDUCATION</b>	<b>28,375</b>	<b>29.2</b>	<b>971.7</b>	<b>36,972</b>	<b>35.8</b>	<b>1,032.7</b>	<b>38,536</b>	<b>40.7</b>	<b>946.8</b>	<b>40,863</b>	<b>40.7</b>	<b>1,004.0</b>	<b>988.8</b>
Biology	13,331	11.2	1,190.3	12,999	9.9	1,313.0	13,532	12.2	1,109.2	15,023	13.3	1,129.5	1,185.5
Family & Consumer Science	8,003	6.9	1,159.9	8,439	7.2	1,172.1	8,862	8.2	1,080.7	10,229	7.8	1,311.4	1,181.0
Mathematics/Comp. Sci.	19,049	15.5	1,229.0	14,630	15.3	956.2	14,918	14.2	1,050.6	16,643	14.2	1,172.0	1,101.9
Physical Science	12,780	12.5	1,022.4	14,809	16.0	925.6	14,825	19.0	780.3	16,359	18.9	865.6	898.4
<b>SCIENCE</b>	<b>53,163</b>	<b>46.1</b>	<b>1,153.2</b>	<b>50,877</b>	<b>48.4</b>	<b>1,051.2</b>	<b>52,137</b>	<b>53.6</b>	<b>972.7</b>	<b>58,254</b>	<b>54.2</b>	<b>1,074.8</b>	<b>1,063.0</b>
<b>CONTINUING EDUCATION</b>	<b>827</b>	<b>0.4</b>	<b>2,067.5</b>	<b>612</b>									
<b>HONORS</b>	<b>114</b>	<b>0.1</b>	<b>1,140.0</b>	<b>105</b>									
<b>SUU</b>	<b>188,689</b>	<b>193.0</b>	<b>977.7</b>	<b>199,620</b>	<b>203.0</b>	<b>983.4</b>	<b>210,880</b>	<b>217.8</b>	<b>968.2</b>	<b>231,452</b>	<b>224.8</b>	<b>1,029.6</b>	<b>989.7</b>

\*In 1993, the Business Department was divided into two departments: Business and Business Education/CIS. (Business Education/CIS SCH/Teaching FTE average is for 2 years)

Source: SUU Cost Study

# DEPARTMENT STATUS AND PRODUCTIVITY, 1998

Costs Are E&G Actuals

Department	Fall 1997 SCH Produced	Fall 1998 SCH Produced	SCH Change	Fall 1998 FTE * Faculty	Fall 1998 FTE Students	FTEs to FTEF Ratio	Percent of SUU Faculty	Percent of SUU Students	% FTEs to %FTEF Difference	1997-98 Cost/SCH \$	Fall 1998 Majors	Majors Per FTEF
<b>ARLE</b>	<b>60.0</b>		<b>(60.0)</b>	<b>0.7</b>		<b>0.00</b>	<b>0.3%</b>	<b>0.00%</b>	<b>-0.31%</b>		--	--
<b>Language &amp; Literature</b>	<b>8,355.0</b>	<b>7,834.0</b>	<b>(521.0)</b>	<b>23.5</b>	<b>503.74</b>	<b>21.44</b>	<b>10.5%</b>	<b>10.35%</b>	<b>-0.11%</b>	<b>\$48.73</b>	<b>220</b>	<b>9.36</b>
English	4,175.0	3,744.0	(431.0)	15.0	240.27	16.02	6.7%	4.94%	-1.74%			
French	1,001.0	823.0	(178.0)	2.0	52.74	26.37	0.9%	1.08%	0.19%			
German	513.0	519.0	6.0	1.3	33.80	26.00	0.6%	0.69%	0.12%			
Humanities	792.0	867.0	75.0	1.6	56.00	35.00	0.7%	1.15%	0.44%			
Languages	36.0	46.0	10.0	0.1	2.80	28.00	0.0%	0.06%	0.01%			
Russian	165.0	145.0	(20.0)	0.5	9.40	18.80	0.2%	0.19%	-0.03%			
Spanish	1,673.0	1,690.0	17.0	3.0	108.73	36.24	1.3%	2.23%	0.90%			
<b>Psychology</b>	<b>3,219.0</b>	<b>2,887.0</b>	<b>(332.0)</b>	<b>7.7</b>	<b>184.87</b>	<b>24.01</b>	<b>3.4%</b>	<b>3.80%</b>	<b>0.37%</b>	<b>\$48.19</b>	<b>246</b>	<b>31.95</b>
<b>Social Sciences</b>	<b>6,171.0</b>	<b>5,525.0</b>	<b>(646.0)</b>	<b>13.8</b>	<b>360.47</b>	<b>26.12</b>	<b>6.1%</b>	<b>7.40%</b>	<b>1.27%</b>	<b>\$42.12</b>	<b>283</b>	<b>20.51</b>
Geography		3.0			0.20							
History	2,156.0	1,974.0	(182.0)	5.1	128.20	25.14	2.3%	2.63%	0.36%			
Political Science	1,322.0	1,317.0	(5.0)	3.2	85.40	26.69	1.4%	1.75%	0.33%			
Social Science	223.0	257.0	34.0	0.6	16.87	28.12	0.3%	0.35%	0.08%			
Sociology	2,470.0	1,974.0	(496.0)	4.9	129.80	26.49	2.2%	2.67%	0.49%			
<b>HUMANITIES &amp; SOCIAL SCIENCES</b>	<b>25,793.0</b>	<b>24,875.0</b>	<b>(918.0)</b>	<b>45.7</b>	<b>1,607.01</b>	<b>35.16</b>	<b>20.3%</b>	<b>33.01%</b>	<b>12.68%</b>		<b>749</b>	<b>16.39</b>
<b>Art</b>	<b>1,715.0</b>	<b>1,768.5</b>	<b>53.5</b>	<b>5.0</b>	<b>114.03</b>	<b>22.81</b>	<b>2.2%</b>	<b>2.34%</b>	<b>0.12%</b>	<b>\$58.17</b>	<b>102</b>	<b>20.40</b>
<b>Music</b>	<b>2,623.0</b>	<b>2,999.0</b>	<b>376.0</b>	<b>10.0</b>	<b>193.47</b>	<b>19.35</b>	<b>4.4%</b>	<b>3.97%</b>	<b>-0.47%</b>	<b>\$67.12</b>	<b>122</b>	<b>12.20</b>
<b>Theatre Arts &amp; Dance</b>	<b>3,650.0</b>	<b>3,861.5</b>	<b>211.5</b>	<b>11.0</b>	<b>250.43</b>	<b>22.77</b>	<b>4.9%</b>	<b>5.14%</b>	<b>0.25%</b>	<b>\$57.25</b>	<b>164</b>	<b>14.91</b>
Theatre Arts	1,734.0	2,005.0	271.0	5.3	129.26	24.39	2.4%	2.66%	0.30%			
Theatre Arts Dance	1,916.0	1,856.5	(59.5)	5.7	121.17	21.26	2.5%	2.49%	-0.05%			
<b>PERFORMING &amp; VISUAL ARTS</b>	<b>7,988.0</b>	<b>8,629.0</b>	<b>641.0</b>	<b>26.0</b>	<b>557.9</b>	<b>64.9</b>	<b>0.1</b>	<b>0.1</b>	<b>(0.0)</b>		<b>388</b>	<b>47.5</b>
<b>Business</b>	<b>8,228.0</b>	<b>6,997.0</b>	<b>(1,231.0)</b>	<b>25.6</b>	<b>462.30</b>	<b>18.06</b>	<b>11.4%</b>	<b>9.50%</b>	<b>-1.89%</b>	<b>\$58.22</b>	<b>788</b>	<b>30.78</b>
Accounting	2,327.0	2,122.0	(205.0)	6.3	146.10	23.19	2.8%	3.00%	0.20%			
Business Admin.	1,942.0	639.0	170.9	6.7	40.40	6.03	3.0%	0.83%	-2.15%			
Economics	1,478.0	1,453.0	(25.0)	3.9	95.27	24.43	1.7%	1.96%	0.22%			
Finance	906.0	528.0	(378.0)	2.9	33.00	11.38	1.3%	0.68%	-0.61%			
Hotel, Resort, & Hospitality	44.0	1,064.0	1,020.0	--	69.53							
Mgt. Information Systems	1,042.0	417.0	(625.0)	3.9	27.20	6.97	1.7%	0.56%	-1.18%			
Marketing	489.0	774.0	285.0	1.9	50.80	26.74	0.8%	1.04%	0.20%			
<b>Business Education/CIS</b>	<b>1,910.0</b>	<b>2,358.0</b>	<b>448.0</b>	<b>8.3</b>	<b>152.93</b>	<b>18.43</b>	<b>3.7%</b>	<b>3.14%</b>	<b>-0.55%</b>	<b>\$81.81</b>	<b>165</b>	<b>19.88</b>
Business Admin.	20.0		(20.0)	4.4		--	2.0%	0.00%	-1.96%			
Business Education/Computer In	1,753.0	2,131.0	378.0	3.3	138.46	41.96	1.5%	2.84%	1.38%			
Paralegal	137.0	227.0	90.0	0.6	14.47	--	0.3%	0.30%	0.03%			
<b>Business, Tech. and Comm</b>	<b>16.0</b>	<b>20.0</b>	<b>4.0</b>	<b>--</b>	<b>1.33</b>	<b>--</b>	<b>0.0%</b>	<b>0.03%</b>	<b>0.03%</b>		<b>1</b>	
<b>Communication</b>	<b>3,805.0</b>	<b>5,141.0</b>	<b>1,336.0</b>	<b>11.0</b>	<b>336.67</b>	<b>30.61</b>	<b>4.9%</b>	<b>6.92%</b>	<b>2.02%</b>	<b>\$57.95</b>	<b>274</b>	<b>24.91</b>
<b>Short Term Intensive Training</b>	<b>341.0</b>	<b>612.0</b>	<b>271.0</b>	<b>3.0</b>	<b>40.67</b>	<b>13.56</b>	<b>1.3%</b>	<b>0.84%</b>	<b>-0.50%</b>			<b>--</b>
Medical Transcription	140.0	294.0	154.0	1.0	19.60	19.60	0.4%	0.40%	-0.04%			
STIT	201.0	318.0	117.0	2.0	21.07	10.54	0.9%	0.43%	-0.46%			
<b>Technology</b>	<b>3,297.0</b>	<b>3,043.0</b>	<b>(254.0)</b>	<b>10.3</b>	<b>199.13</b>	<b>19.33</b>	<b>4.6%</b>	<b>4.09%</b>	<b>-0.49%</b>	<b>\$84.19</b>	<b>378</b>	<b>36.70</b>
CAD-CAM Engineering Tech.	174.0	137.0	(37.0)	0.7	9.13	13.04	0.3%	0.19%	-0.12%			
Criminal Justice	1,086.0	1,393.0	307.0	2.5	91.06	36.42	1.1%	1.87%	0.76%			
Design Technology	195.0	239.0	44.0	0.9	15.27	16.97	0.4%	0.31%	-0.09%			
Electronics Engineering Tech.	330.0	159.0	(171.0)	1.5	10.60	7.07	0.7%	0.22%	-0.45%			
Technology Education	1,512.0	1,115.0	(397.0)	4.7	73.07	15.55	2.1%	1.50%	-0.59%			
<b>BUSINESS</b>	<b>17,597.0</b>	<b>18,171.0</b>	<b>574.0</b>	<b>58.2</b>	<b>1,193.03</b>	<b>20.50</b>	<b>25.9%</b>	<b>24.50%</b>	<b>-1.38%</b>		<b>1,606</b>	<b>27.59</b>
<b>CONTINUING EDUCATION</b>	<b>87.0</b>	<b>32.5</b>	<b>(54.5)</b>		<b>2.07</b>						<b>323</b>	

**DEPARTMENT STATUS AND PRODUCTIVITY, 1998**  
Costs Are E&G Actuals

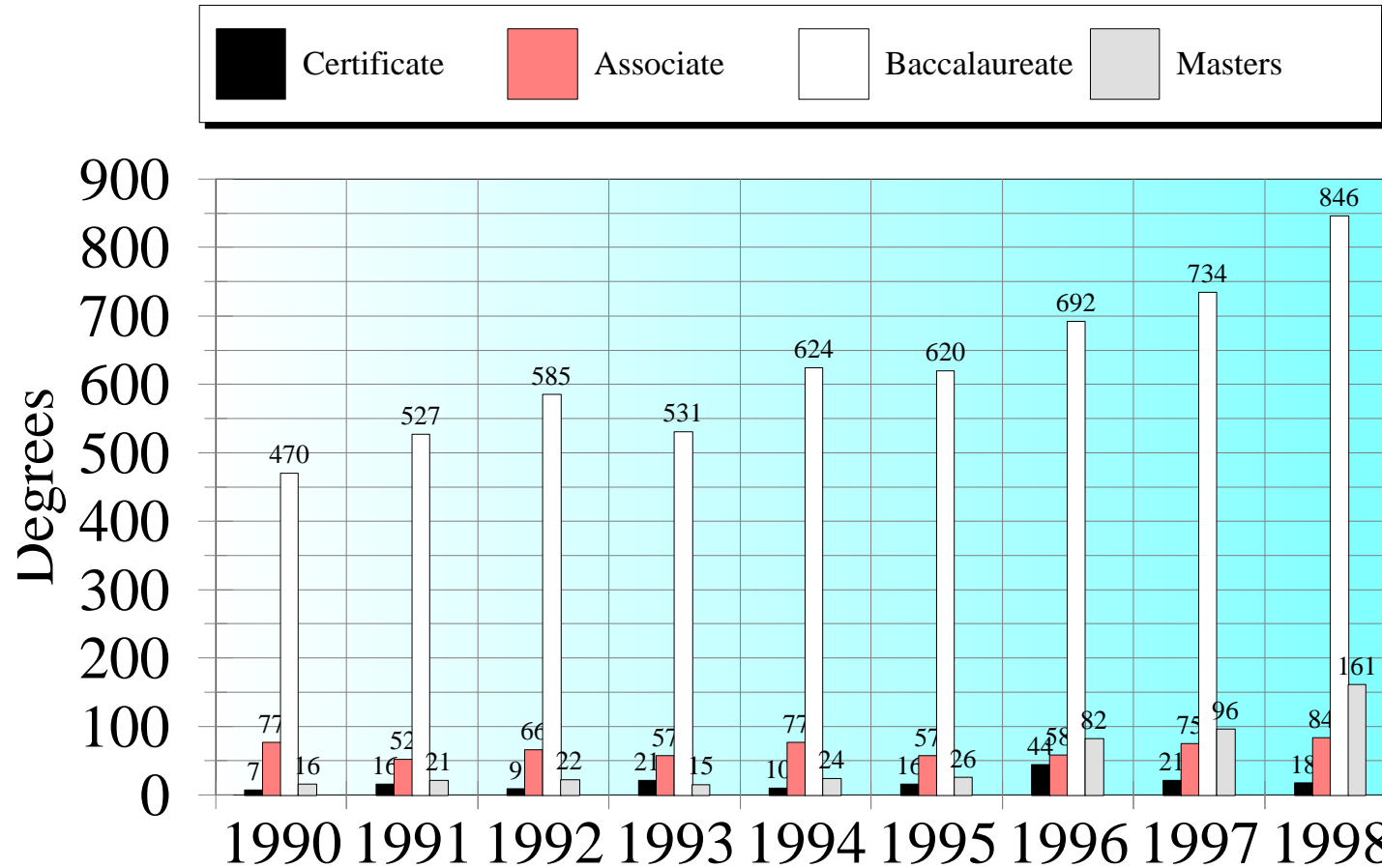
Department	Fall 1997 SCH Produced	Fall 1998 SCH Produced	SCH Change	Fall 1998 FTE * Faculty	Fall 1998 FTE Students	FTEs to FTEF Ratio	Percent of SUU Faculty	Percent of SUU Students	% FTEs to %FTEF Difference	1997-98 Cost/SCH \$	Fall 1998 Majors	Majors Per FTEF
<b>Physical Education</b>	<b>3,502.0</b>	<b>2,559.5</b>	<b>(942.5)</b>	<b>8.3</b>	<b>164.80</b>	<b>19.86</b>	<b>3.7%</b>	<b>3.39%</b>	<b>-0.31%</b>	<b>\$65.01</b>	<b>140</b>	<b>16.87</b>
<b>Teacher Education</b>	<b>8,337.0</b>	<b>8,042.5</b>	<b>(294.5)</b>	<b>32.4</b>	<b>550.90</b>	<b>17.00</b>	<b>14.4%</b>	<b>11.32%</b>	<b>-3.10%</b>	<b>\$67.15</b>	<b>846</b>	<b>26.11</b>
Education	6,094.0	2,202.5	(3,891.5)	22.3	164.17	7.36	9.9%	3.37%	-6.55%			
Educational Psychology	78.0		(78.0)	0.1		--	0.0%	0.00%	-0.04%			
Elementary Education	453.0	3,196.0	2,743.0	2.0	211.20	--	0.9%	4.34%	3.45%			
Instructional Media	220.0	134.0	(86.0)	3.0	8.93	2.98	1.3%	0.18%	-1.15%			
Secondary Education	495.0	1,496.0	1,001.0	1.5	99.13	--	0.7%	2.04%	1.37%			
Special Education	997.0	1,014.0	17.0	3.5	67.47	19.28	1.6%	1.39%	-0.17%			
<b>EDUCATION</b>	<b>11,839.0</b>	<b>10,602.0</b>	<b>(1,237.0)</b>	<b>40.7</b>	<b>715.70</b>	<b>17.58</b>	<b>18.1%</b>	<b>14.70%</b>	<b>-3.40%</b>		<b>986</b>	<b>24.23</b>
<b>HONORS</b>	<b>27.0</b>		<b>N/A</b>	<b>--</b>		<b>0.00</b>	<b>0.0%</b>	<b>0.00%</b>	<b>0.00%</b>			<b>--</b>
<b>Biology</b>	<b>4,794.0</b>	<b>3,751.0</b>	<b>(1,043.0)</b>	<b>13.3</b>	<b>244.33</b>	<b>18.37</b>	<b>5.9%</b>	<b>5.02%</b>	<b>-0.90%</b>	<b>\$60.36</b>	<b>613</b>	<b>46.09</b>
Agricultural Science	916.0	751.0	(165.0)	2.4	49.27							
Biology	3,635.0	2,821.0	(814.0)	10.3	183.53	17.82	4.6%	3.77%	-0.81%			
Natural Resources	108.0	75.0	(33.0)	0.3	4.60				0.00%			
Range Management	135.0	104.0	(31.0)	0.3	6.93	23.10	0.1%	0.14%	0.01%			
<b>Family and Consumer Science</b>	<b>3,380.0</b>	<b>3,195.0</b>	<b>(185.0)</b>	<b>7.8</b>	<b>209.73</b>	<b>26.89</b>	<b>3.5%</b>	<b>4.31%</b>	<b>0.84%</b>	<b>\$49.48</b>	<b>150</b>	<b>19.23</b>
Child Development	1,399.0	1,184.0	(215.0)	3.5	77.93	22.27	1.6%	1.60%	0.04%			
Clothing, Textiles and Ar	120.0	202.0	82.0	0.5	13.40	26.80	0.2%	0.28%	0.05%			
Food and Nutrition	1,325.0	1,194.0	(131.0)	2.5	77.80	31.12	1.1%	1.60%	0.49%			
Family & Consumer Science	536.0	421.0	(115.0)	0.3	27.87	92.90	0.1%	0.57%	0.44%			
Interior Design		194.0	194.0	1.0	12.73	12.73	0.4%	0.26%	-0.18%			
<b>Mathematics/Computer Sci.</b>	<b>6,002.0</b>	<b>6,271.0</b>	<b>269.0</b>	<b>14.2</b>	<b>401.53</b>	<b>28.28</b>	<b>6.3%</b>	<b>8.25%</b>	<b>1.93%</b>	<b>\$56.60</b>	<b>179</b>	<b>12.61</b>
Computer Science	1,389.0	1,425.0	36.0	3.6	92.67	25.74	1.6%	1.90%	0.30%			
Mathematics	4,586.0	4,816.0	230.0	10.5	306.86	29.22	4.7%	6.30%	1.63%			
Mathematics/Computer Sci.	27.0	30.0	3.0	0.1	2.00	20.00	0.0%	0.04%	-0.00%			
<b>Physical Science</b>	<b>5,729.0</b>	<b>5,302.0</b>	<b>(427.0)</b>	<b>18.9</b>	<b>342.33</b>	<b>18.11</b>	<b>8.4%</b>	<b>7.03%</b>	<b>-1.38%</b>	<b>\$71.09</b>	<b>139</b>	<b>7.35</b>
Chemistry	2,855.0	2,635.0	(220.0)	6.9	170.81	24.76	3.1%	3.51%	0.44%			
Civil Engineering	101.0	131.0		1.0	8.33	8.33	0.4%	0.17%	-0.27%			
Pre-Engineering	118.0	100.0	(18.0)	--	6.13				0.00%			
Geography	219.0	225.0	6.0	2.0	15.00	7.50	0.9%	0.31%	-0.58%			
Geology	1,344.0	899.0	(445.0)	4.0	58.80	14.70	1.8%	1.21%	-0.57%			
Mechanical Eng.				1.0		0.00	0.4%	0.00%	-0.44%			
Physical Science	2.0	50.0	48.0	1.0	3.33	3.33	0.4%	0.07%	-0.38%			
Physics	1,090.0	1,262.0	172.0	3.0	79.93	26.64	1.3%	1.64%	0.31%			
<b>SCIENCE</b>	<b>19,905.0</b>	<b>18,519.0</b>	<b>(1,386.0)</b>	<b>54.2</b>	<b>1,197.92</b>	<b>22.10</b>	<b>24.1%</b>	<b>24.61%</b>	<b>0.50%</b>		<b>1,081</b>	<b>19.94</b>
<b>UNIV. STUDIES &amp; GEN. EDUC.</b>	<b>2,111.0</b>	<b>2,330.0</b>	<b>219.0</b>	<b>--</b>	<b>152.80</b>	<b>--</b>	<b>--</b>	<b>--</b>	<b>0.00%</b>		<b>592</b>	<b>--</b>
<b>NURSING</b>									<b>0.00%</b>			
<b>UNKNOWN MAJORS</b>									<b>0.00%</b>			
<b>SUU</b>	<b>77,359.0</b>	<b>74,529.5</b>	<b>(2,829.5)</b>	<b>224.8</b>	<b>4,868.53</b>	<b>21.66</b>	<b>100.0%</b>	<b>100.00%</b>		<b>\$59.40</b>	<b>5,725</b>	<b>25.47</b>

\*Estimates based on budgeted faculty. Distributions to individual disciplines within larger departments are imputed estimates.

Note: Totals of overload classes are included in the SCH.

# Degrees Conferred

1990-1998



Source: Higher Education General Information Survey (HEGIS), Integrated Postsecondary Education Data System (IPEDS)

SUU CAREER SERVICES SURVEY -- 1997 GRADUATES WITH BACHELOR DEGREES

SUU CAREER SERVICES SURVEY – 1997 GRADUATES WITH BACHELOR DEGREES

GRADUATE MAJORS	WITH CERTIFICATE	WITHOUT CERTIFICATE	TOTAL GRADUATES	TOTAL RESPONSES	SEEKING EMPLOYMENT	HOMEMAKING OR MISSIONS	CONTINUING EDUCATION	NUMBER EMPLOYED	EMPLOYED IN REL. FIELD	EMPLOYED IN UNREL. FIELD
ACCOUNTING		61	61	56		2	24	30	26	4
AGRICULTURE INDUSTRY		6	6	6				6	6	
ART		11	11	9			1	8	5	3
ART WITH CERTIFICATE	4		4	4				4	4	
BIOLOGY		57	57	50	1	2	26	21	16	5
BIOLOGY WITH CERTIFICATE	6		6	6			1	5	5	
BUSINESS ADMINISTRATION		46	46	42		4	6	32	28	4
BUSINESS ED/CIS		9	9	9				9	9	
BUSINESS ED/CIS WITH CERTIFICATE	10		10	10		1		9	9	
CHEMISTRY		10	10	7			2	5	3	2
COMMUNICATIONS		44	44	39		1	5	33	26	7
COMMUNICATIONS WITH CERTIFICATE	1		1	1				1	1	
CRIMINAL JUSTICE		18	18	13			3	10	9	1
ELEMENTARY ED WITH CERTIFICATE	152		152	144		19	5	120	109	11
ENGINEERING TECHNOLOGY		12	12	8			1	7	6	1
ENGLISH		11	11	10			7	3	2	1
ENGLISH WITH CERTIFICATE	5		5	5				5	5	
HISTORY		9	9	7			3	4	2	2
HISTORY WITH CERTIFICATE	10		10	10		1		9	9	
FAMILY & CONSUMER SCIENCE		10	10	8	1	2		5	2	3
FAMILY & CONSUMER SCI WITH CERTIF.	8		8	8			5	3	3	
LANGUAGES		10	10	7			3	4	4	
LANGUAGES WITH CERTIFICATE	14		14	14			3	11	9	2
MATH SCI/COMPUTER SCIENCE		4	4	4				4	4	
MATH SCI/MATH		5	5	5			4	1	1	
MATH SCI/MATH WITH CERTIFICATE	7		7	7		1		6	5	1
MUSIC		5	5	2				2	2	
MUSIC WITH CERTIFICATE	4		4	4				4	4	
POLITICAL SCIENCE		10	10	9			5	4	2	2
PHYSICAL EDUCATION		19	19	16		1	9	6	3	3
PHYSICAL EDUCATION WITH CERTIFICATE	20		20	19			1	18	17	1
PHYSICAL SCIENCE		1	1	1		1				
PSYCHOLOGY		50	50	48		4	12	32	21	11
PSYCHOLOGY WITH CERTIFICATE	3		3	3		1		2	2	
SOCIAL SCIENCE		5	5	4			1	3	3	
SOCIAL SCIENCE WITH CERTIFICATE	7		7	6			1	5	4	1
SOCIOLOGY		23	23	14			5	9	4	5
SOCIOLOGY WITH CERTIFICATE	2		2	2			1	1		1
TECHNOLOGY ED		2	2	2			1	1	1	
TECHNOLOGY ED WITH CERTIFICATE	4		4	4			1	3	2	1
THEATRE ARTS & DANCE		12	12	5			1	4	3	1
THEATRE ARTS & DANCE WITH CERTIFICATE	5		5	5			1	4	4	
UNIVERSITY STUDIES		3	3	2			1	1	1	
TOTALS	262	453	715	635	2	40	139	454	381	73
PERCENTAGES	36.64%	63.36%	100.00%	88.81%	0.31%	6.30%	21.89%	71.50%	83.92%	16.08%
YEARLY AVERAGE 1988-1997	216	330	545	524	23	32	95	374	302	72
PERCENTAGES	39.63%	60.55%	100.00%	96.15%	4.39%	6.11%	18.13%	71.37%	80.75%	19.25%
With Certificate = Teaching Certificate										



**AVERAGE FACULTY LOADS PER HEADCOUNT FACULTY\***  
**1995-96 to 1998-99**

Note: These data are derived from course information and should not be confused with faculty workload studies or budgeted FTE information.

	AVERAGE NUMBER OF SECTIONS PER HEADCOUNT FACULTY*			AVERAGE NUMBER OF CREDIT HOURS TAUGHT PER HEADCOUNT FACULTY*			AVERAGE NUMBER OF DIFFERENT PREPARATIONS PER HEADCOUNT FACULTY*		
	1996-97	1997-98	1998-99	1996-97	1997-98	1998-99	1996-97	1997-98	1998-99
ARLE	4.3	2.0		7.8	6.0		1.3	2.0	
Language and Literature	3.3	3.6	3.5	13.3	14.4	11.4	2.3	2.4	2.4
Psychology	3.6	2.8	3.6	13.9	11.4	10.6	2.7	2.2	2.5
Social Sciences	3.9	4.1	3.6	12.2	14.1	10.9	3.2	3.2	3.1
<b>HUMANITIES &amp; SOCIAL SCIENCE</b>	<b>3.8</b>	<b>3.2</b>	<b>3.6</b>	<b>11.8</b>	<b>11.5</b>	<b>11.0</b>	<b>2.4</b>	<b>2.5</b>	<b>2.7</b>
Art	3.3	3.0	4.0	12.1	11.3	11.4	2.7	2.5	3.3
Music	4.0	4.4	5.3	7.9	9.2	10.7	3.7	4.2	4.5
Theatre Arts	3.5	3.6	3.4	8.6	8.1	7.7	3.0	2.8	2.7
<b>PERFORMING &amp; VISUAL ARTS</b>	<b>3.6</b>	<b>3.7</b>	<b>4.3</b>	<b>9.6</b>	<b>9.6</b>	<b>10.0</b>	<b>3.2</b>	<b>3.2</b>	<b>3.5</b>
Business	2.9	3.2	4.0	10	11.4	11.9	2.5	2.7	2.9
Business Education/CIS	4.1	2.9	4.0	11.9	8.7	11.0	3.9	2.7	3.1
Bus., Tech., & Comm.	2.0	2.0	2.0	12.0	12.0	10.0	1.0	1.0	1.0
Communications	3.4	4.2	4.3	12	14.9	12.3	2.4	2.6	2.6
STIT	1.2	1.3	1.0	5.2	4.4	3.8	1.2	1.1	1.0
Technology	3.2	3.5	4.0	11.1	12.3	11.9	2.9	2.9	3.5
<b>BUSINESS</b>	<b>3.0</b>	<b>3.2</b>	<b>3.6</b>	<b>10.5</b>	<b>11.2</b>	<b>10.7</b>	<b>2.5</b>	<b>2.6</b>	<b>2.7</b>
Physical Education	3.3	3.1	3.2	6.1	5.5	4.3	2.4	2.3	2.5
Teacher Education	4.5	4.4	3.9	17.3	16.5	11.3	3.1	2.8	2.6
<b>EDUCATION</b>	<b>4.0</b>	<b>3.9</b>	<b>3.6</b>	<b>12.4</b>	<b>12.2</b>	<b>8.5</b>	<b>2.8</b>	<b>2.6</b>	<b>2.6</b>
Biology	4.5	5.6	5.9	10.2	13.8	12.3	2.4	2.8	4.3
Family & Consumer Science	4.4	4.2	7.3	10.4	10.0	14.5	2.9	2.5	3.8
Mathematics/Computer Science	3	3.1	3.2	11.3	12.1	11.1	2.5	2.7	2.6
Physical Science	7	7.3	6.4	14.1	14.6	12.3	3.3	3.4	4.8
<b>SCIENCE</b>	<b>4.6</b>	<b>5</b>	<b>5.4</b>	<b>11.5</b>	<b>12.7</b>	<b>12.3</b>	<b>2.7</b>	<b>2.9</b>	<b>3.8</b>
<b>CONTINUING EDUCATION</b>	<b>3</b>	<b>3</b>	<b>3.0</b>	<b>3.2</b>	<b>4.0</b>	<b>2.0</b>	<b>2.2</b>	<b>1.0</b>	<b>1.0</b>
<b>GENERAL EDUCATION</b>	<b>1.8</b>	<b>2.1</b>	<b>1.5</b>	<b>4.3</b>	<b>4.5</b>	<b>4.2</b>	<b>1.11</b>	<b>1.2</b>	<b>1.1</b>
<b>HONORS</b>	<b>2.0</b>	<b>1.0</b>		<b>6.0</b>	<b>3.0</b>		<b>2.0</b>	<b>1.0</b>	
<b>UNIVERSITY</b>	<b>3.7</b>	<b>3.8</b>	<b>3.9</b>	<b>10.9</b>	<b>11.4</b>	<b>10.1</b>	<b>2.7</b>	<b>2.6</b>	<b>2.9</b>

Source: Third-Week Enrollment Report, SUU Registrar's Office.

\*All data are for headcount faculty, not FTE faculty. Hence, even part-time faculty are treated as full-time faculty. Thus, numbers of sections, credit hours, and preparations taught are lower than calculations per FTE faculty.

# SOUTHERN UTAH UNIVERSTIY BUILDING INVENTORY

REVISED 22 APRIL 99

STATE BUILDING NUMBER	SUU BLD #	BUILDINGS FUNDED BY EDUCATION AND GENERAL	LOCATION	YEAR PURCHASED CONST. OR REMODELED	GROSS SQ. FT.	ORIGINAL COST PLUS REMODELING	CONST CLASS	QTY.	INSURED REPLACEMENT BUILDING VALUE 98-99	INSURED REPLACEMENT CONTENT VALUE 99-00
06675-01	126	Adams Memorial Theater	Campus	1971-79	14,497	\$635,594	D	G	\$913,311	\$4,547
00211-01	128	Administration Building	Campus	1973-83	26,068	\$2,218,278	B	G	\$2,059,372	\$517,140
8622		<b>*Alder (Steve) Home, Shakespeare storage</b>	142 W. College Ave. Cedar City	1996-pur.	2,323	\$55,000	D	G	\$55,000	\$40,000
08271-01	3	Alumni House	Campus	1995-pur.	5,143	\$75,000	C	G	\$293,151	\$37,328
01404-01	16	<b>*Art Studio</b>	Campus	1923	2,214	\$26,510	D	P	\$139,482	\$11,359
01425-06	701	Ashcroft Observatory	Valley Farm Cedar City	1980	705	\$32,265	D	G	\$38,001	\$31,984
00184-01	1	Auditorium	Campus	1955-80	34,646	\$1,175,956	B	G	\$4,226,812	\$271,501
8621		<b>*Baker (Revena) Home Shakespeare</b>	172 W. College Ave. Cedar City	1997-pur. cons. 1945	2,196	\$55,000	D	G	\$55,000	\$33,000
07968-05	704	<b>*Berry (John) Home (Child care ctr.)</b>	43 S. 200 W. Cedar City	1995-pur.	2,488	\$94,577	D	G	\$94,577	\$5,000
08283-05	705	Brown Clinic (Medical) (Costume Shop)	161 W. Center Cedar City	1996-pur.	5,532	\$340,085	D	G	\$298,728	\$28,000
8620	711	<b>*Bryant ( Garth) Home Shakespeare Staff Offices</b>	246 W. Center Street CedarCity	1998-pur. const. 1945	2,456	\$85,000	D	G	\$85,000	\$15,000
8414	706	<b>*Burch Mann Home</b>	90 S. 200 W. Cedar City	1996-pur.	2,949	\$95,000	D	G	\$95,000	\$0
8415	707	<b>*Burch Mann Costume Bld.</b>	90 S. 200 W. Cedar City	1996-pur.	1,458	\$50,000	D	G	\$50,000	\$0
04895-01	132	Centrum\Special Events	Campus	1985	104,614	\$7,857,368	B	G	\$12,721,916	\$1,264,763
06676-01	120	Child Development Lab (pre-shool)	Campus	1973	3,504	\$40,000	D	G	\$280,320	\$2,979
05817-05	136	<b>*Dalley Home (Shakespeare Office)</b>	26S. 200 W. Cedar City	1989 Pur.	1,605	\$57,528	D	G	\$60,000	\$15,000
00213-01	131	Dixie Leavitt Business Bld.	Campus	1980-83	26,123	\$2,040,390	B	G	\$2,742,915	\$464,313
00204-01	70	Electronic Learning Center	Campus	1968-97	54,214	\$2,658,121	B	G	\$5,692,470	\$2,133,114
		<b>*Ford Home (Beverely) (Storage)</b>	152 W. College Avenue Cedar City	1998 -Pur. 1964-Const	2,456	\$78,819	D	P	\$78,819	\$15,000
00185-01	2	General Classroom	Campus	1962-93	52,912	\$2,844,858	B	G	\$5,555,760	\$575,448
08273-01	71	Gerald R. Sherratt Library	Campus	1996	82,418	\$10,255,284	A	G	\$10,357,215	\$4,088,880
07048-05	703	Gower Building (Storage)	800 W. 400 N. Cedar City	1992	4,000	\$184,400	S	G	\$212,000	\$42,891
00206-01	80	Heat Plant	Campus	1970-76-85	8,716	\$3,132,128	C	G	\$3,627,552	\$12,000
08272-01	160	Institutional Residence	Campus 302 S. 1100 W.	1996	11,314	\$739,000	D	E	\$769,352	\$62,366
05829-01	138	J. D. & Alice C. Harris Center	Campus	1989	7,809	\$486,240	D	G	\$510,552	\$15,609

\* Indicates Bld Insured For Actual Cash Value Only

07969-01	138E	<b>*J. D. &amp; Alice C. Harris Center East Wing</b>	Campus (approx 50% complete)	1995-96	7,117	\$311,078	D	G	\$311,078	\$0
07970-01	138W	J. D. & Alice C. Harris Center West Wing	Campus	1994	7,054	\$540,000	D	G	\$380,916	\$83,403
		<b>*Jones (Doug) (Apts)</b>	53 S. 200 W. Cedar City	1999-Pur	4,320	\$260,000	D	G	\$260,000	\$25,000
01402-01	4	Life Science	Campus	1977	9,403	\$489,816	B	G	\$1,485,674	\$202,174
06668-01	151	Motorpool	Campus	1991	5,133	\$318,246	C	G	\$292,581	\$60,268
01406-04	712	Mountain Center	11 Miles up Cedar Canyon	1950-91	5,938	\$267,210	D	G	\$318,106	\$21,488
00191-01	14	Music Building	Campus	1967	21,003	\$1,260,913	C	G	\$1,848,264	\$382,308
00188-01	11	Old Main (Replicate)	Campus	1898-1950-79	17,016	\$1,229,295	D	G	\$2,269,083	\$228,110
00202-01	33	Physical Education	Campus	1965-77	50,819	\$960,603	C	G	\$4,776,986	\$116,622
07045-01	152	Plant Operations (Construction)	West Campus	1991-1998	6,453	\$260,000	C	G	\$367,821	\$132,000
	156	Plant Operations (Custodial)	West Campus	1998-1999	3,750	\$99,995	C	G	\$99,995	\$150,000
06667-01	154	Plant Operations (Grounds)	West Campus	1993-1999	6,108	\$261,118	C	G	\$292,581	\$172,231
07046-01	153	Plant Operations (Utilities)	West Campus	1993	5,133	\$245,000	C	G	\$292,581	\$126,212
00205-01	75	Plant Operations (Office, Tel., Auto)	Campus	1968	10,169	\$378,570	C	G	\$579,633	\$292,000
07971-05	39	<b>*Platt Home (Office)</b>	40 S. 200 W. Cedar City	1994 pur.	1,240	\$77,413	D	G	\$79,000	\$12,000
00189-01	12	R. C. Braithwaite lib. Arts. Ctr. (Replicate)	Campus	1907-78	19,091	\$1,359,608	D	G	\$2,343,600	\$476,313
01403-01	10	R Haze Hunter Conference Center	Campus	1928-62-92	37,024	\$4,618,530	C	G	\$3,480,256	\$411,704
05825-01	802	Radio Building	Campus	1984	120	\$10,200	D	G	\$9,000	\$10,153
05816-01	134	Randall Jones Theater	Campus	1989	35,894	\$4,201,641	B	G	\$4,379,068	\$439,220
06783-05	140	<b>*Rice Home (Shakespeare Office)</b>	271 W. Center Cedar City	1951	1,401	\$70,050	D	G	\$70,050	\$10,000
05833-01	5	Science Building	Campus	1992	65,082	\$8,327,922	B	G	\$10,613,492	\$1,815,509
05819-01	133	Sharwan Smith Center (35% of Bld. value only-remaining 65% is listed under Auxiliary Funded Blds, in this report)	Campus	1988-97	60,769	\$6,918,566	B	G	\$6,633,485	\$567,841
00190-01	13	South Hall	Campus	1930-88	10,656	\$355,946	C	P	\$415,584	\$85,035
06677-01	115	Stadium (Coliseum)	Campus (new add. \$1,525,962 )	1968-87-97	22,409	\$1,525,962	C	G	\$2,257,650	\$49,646

\* Indicates Bld Insured For Actual Cash Value Only

06666-01	137	Stadium Concession Services	Campus	1991	1,258	\$61,642	C	G	\$71,706	\$12,173
05824-01	139	Stadium Services Bld. (Rest Rooms)	Campus	1989	2,221	\$159,912	C	G	\$126,597	\$0
00212-01	130	Technology Building	Campus	1975	42,110	\$1,929,803	C	G	\$5,516,410	\$1,217,622
07395-05	38	<b>*Thompson Home (Duplex Costume Shop)</b>	227 & 231 W Center Cedar City	1993 pur.	1,242	\$58,201	D	P	\$58,201	\$12,000
00187-01	7	<b>*University Hosting Center</b>	Campus	1947-61	6,164	\$59,610	D	P	\$203,412	\$24,092
06673-06	603	Valley Farm Agriculture Classroom	Valley Farm Cedar City	1961-91	1,685	\$146,114	C	P	\$111,210	\$2,195
01422-06	604	<b>*Valley Farm Bunk House</b>	Valley Farm Cedar City	1950	1,038	\$7,266	S	P	\$9,342	\$0
01421-06	602	<b>*Valley Farm Helper Home</b>	Valley Farm Cedar City	1964	2,052	\$18,468	D	G	\$60,000	\$965
01424-06	606	Valley Farm Maintenance Shed	Valley Farm Cedar City	1971	2,880	\$26,681	S	G	\$34,560	\$3,500
06672-06	601	<b>*Valley Farm Supervisors Home</b>	Valley Farm Cedar City	1963	2,492	\$16,980	D	G	\$80,000	\$760
07394-06	711	Valley Farm Storage Building (Custodial Storage )	Valley Farm Cedar City	1972-95	4,000	\$14,000	S	G	\$48,000	\$154,000
05818-05	142	<b>*Whitmore Home (Costume Shop)</b>	251 W. Center, Cedar City	1991 pur.	2,333	\$81,655	D	P	\$81,655	\$16,153
<b>Total: 61</b>		<b>* Indicates Bld Insured For Actual</b>			<b>944,937</b>	<b>\$72,240,415</b>			<b>\$101,269,882</b>	<b>\$16,999,919</b>

**NOTE: The Student Center has been combined with the new Sharwan Smith Center and as of 1997 is considered to be one building. The original cost for the Student center before the two were combined was \$2,233,174 with a total sq. footage of 38,503 and a content value of \$807,236 . The building cost of the Sharwan Smith Center before combining the two, as of March 30, 1997, was \$16,650,000. Square Footage, 142,000 and content value,\$1,500,000.**

## MISCELLANEOUS STRUCTURES WHICH DO NOT MEET REQUIREMENTS FOR BUILDINGS

STATE BUILDING NUMBER	SUU BLD #	BUILDINGS FUNDED BY EDUCATION AND GENERAL	LOCATION	YEAR PURCHASED CONST. OR REMODLED	GROSS SQ. FT.	ORIGINAL COST PLUS REMODELING	CONST CLASS	QTY .	INSURED REPLACEMENT BUILDING VALUE 98-99	INSURED REPLACEMENT CONTENT VALUE 99-00
05827-01	800	Campus Mall	Campus	1980	1,800	\$76,000	D	G	\$154,224	\$0
08274-01	801	Centurium (Pavilion)	Campus	1996	1,300	\$153,999	B	G	\$146,000	\$321,000
06659-04	713	Mountain Pavilion (1)	11 Miles up Cedar Canyon	1992	1,200	\$14,400	D	G	\$14,400	\$0
06660-04	714	Mountain Pavilion (2)	11 Miles up Cedar Canyon	1992	1,750	\$15,750	D	G	\$21,000	\$0
08282-01	155	<b>*Plant Operations (Greenhouse)</b>	Campus	1995	4,608	\$7,000	D	G	\$10,000	\$2,000
05828-01	807	Tanner Fountain	Campus	1982	700	\$107,724	O	G	\$111,210	\$0
06671-06	609	Valley Farm Animal Shed (1) (Loafing Sheds)	Valley Farm Cedar City	1992	1,200	\$10,800	D	G	\$14,400	\$0
06773-06	610	Valley Farm Animal Shed (2) (Loafing Sheds)	Valley Farm Cedar City	1992	1,200	\$10,800	D	G	\$14,400	\$0
06669-06	611	Valley Farm Animal Shed (3) (Loafing Sheds)	Valley Farm Cedar City	1992	1,200	\$10,800	D	G	\$14,400	\$0
05831-06	608	Valley Farm Animal Sheds (Sheep & Cattle Sheds Various)	Valley Farm Cedar City	1943-1985	10,261	\$49,615	D	P	\$177,132	\$2,892
06665-06	607	Valley Farm Beef Management	Valley Farm Cedar City	1991	4,680	\$397,800	S	G	\$56,160	\$3,844
01423-06	605	<b>*Valley Farm Granary</b>	Valley Farm Cedar City	1967	346	\$3,114	S	G	\$4,152	\$0
08284-06	612	Valley Farm Hay Storage	Valley Farm Cedar City	1950	2,400	\$10,000	D	P	\$10,000	\$20,000
<b>Total: 13</b>					<b>\$32,645</b>	<b>\$867,802</b>			<b>\$747,478</b>	<b>\$349,736</b>

\* Indicates bld insured for Actual Cash Value

### AUXILARY FUNDED BUILDINGS

STATE BUILDING NUMBER	SUU BLD #	AUXILARY FUNDED BUILDINGS	LOCATION	YEAR PURCHASED CONST. OR REMODLED	GROSS SQ. FT.	ORIGINAL COST PLUS REMODELING	CONST CLASS	QTY .	INSURED REPLACEMENT BUILDING VALUE 98-99	INSURED REPLACEMENT CONTENT VALUE 99-00
05819-01	133	Sharwan Smith ( 65% of Total bld. is Aux. Funded)	Campus	1988-97	112,856	\$12,979,916	B	G	\$12,319,329	\$1,054,562
<b>Total (Includ</b>					<b>112,856</b>	<b>\$12,979,916</b>	<b>B</b>	<b>G</b>	<b>\$12,319,329</b>	<b>\$1,054,562</b>

### UNIVERSITY OWNED BUILDINGS ASSIGNED TO HOUSING ( Auxilary Funded )

STATE BUILDING NUMBER	SUU BLD #	AUXILARY FUNDED BUILDINGS	LOCATION	YEAR PURCHASED CONST. OR REMODLED	GROSS SQ. FT.	ORIGINAL COST PLUS REMODELING	CONST CLASS	QTY .	INSURED REPLACEMENT BUILDING VALUE 98-99	INSURED REPLACEMENT CONTENT VALUE 99-00
07047-03	37	Bushnell Home	185 S. 300 W. Cedar City	1993 pur.	2,210	\$82,585	D	G	\$163,540	\$0
05820-03	32	Housing Maintence Shop	Campus *DOES NOT INCLUDE COST FOR NEW ADDITION	1992-98-99	4,840	\$110,114	C	G	\$85,500	\$13,117
00194-03	26	Juniper Hall (Aux)	Campus	1964-66-75	49,692	\$1,445,051	C	G	\$2,931,828	\$144,954
00196-03	40-41	Manzanita Hall A B (Aux)	Campus	1962	11,720	\$1,020,471	B	G	\$867,280	\$24,596
00197-03	42	Manzanita Hall C (Aux)	Campus	1962	7,436	\$0	B	G	\$550,264	\$12,298
00199-03	43-44 45	Manzanita Hall DEF (Aux)	Campus	1964	17,580	\$0	B	G	\$1,300,920	\$36,894
05823-03	36	Sigma Nu Home	197 S. 300 W. Cedar City	1947	1,140	\$37,057	D	G	\$62,700	\$2,000
07517-03	62	Turnbaugh Home	171 S. 300 W. Cedar City	1994	1,361	\$74,425	D	G	\$74,855	\$0
<b>Total: 8</b>					<b>95,979</b>	<b>\$2,769,703</b>			<b>\$6,036,887</b>	<b>\$233,859</b>

NOTE: The original cost of \$1,020,471 is for all Manzanita blds. A thru F

### UNIVERSITY OWNED BUILDINGS ASSIGNED TO HEAD START ( Federally Funded )

STATE BUILDING NUMBER	SUU BLD #	AUXILARY FUNDED BUILDINGS	LOCATION	YEAR PURCHASED CONST. OR REMODLED	GROSS SQ. FT.	ORIGINAL COST PLUS REMODELING	CONST CLASS	QTY .	INSURED REPLACEMENT BUILDING VALUE 98-99	INSURED REPLACEMENT CONTENT VALUE 99-00
08275-02	708	Head Start (Univ.Owned)	4701 N. Wagonwheel, Enoch	1995	1,152	\$49,741	D	G	\$92,160	\$2,500
07401-02	709	Head Start (Univ.Owned)	680 W. 300 S. Milford	1993	1,008	\$46,500	D	G	\$80,640	\$2,500
08276-02	710	Head Start (Univ.Owned)	55 N. 1st. W. Escalante	1995	1,152	\$49,741	D	G	\$92,160	\$2,500
	711	Head Start (Univ.Owned)	55 S. 300 E. Parowan	1998	1,200	\$49,625	D	G	\$70,000	\$2,500
<b>Total: 4</b>					<b>4,512</b>	<b>\$195,607</b>			<b>\$334,960</b>	<b>\$10,000</b>

NOTE: The Parowan H.S. Bld. is now Complete and will be added to the 1999 list, finished sept 1998 1,200 sq ft cost 59,000 con. class D

## UNIVERSITY BUILDINGS ASSIGNED TO HEAD START ( Federally Funded - Leased Buildings )

( Federally Funded - Leased Buildings )

STATE BUILDING NUMBER	SUU BLD #	AUXILARY FUNDED BUILDINGS	LOCATION		GROSS SQ. FT.		CONST CLASS	QTY .		INSURED REPLACEMENT CONTENT VALUE 99-00
06774-02	905	Head Start (Leased)	2390 W. Hwy. 56 Cedar City		11,438		0	G		\$115,185
08277-02	906	Head Start (Leased)	217 E. Telegraph Washington		1,928		0	G		\$6,517
08278-02	907	Head Start (Leased)	188 E. 300 S. St George		5,600		0	G		\$2,500
08279-02	908	Head Start (Leased)	55 W. Center Beaver		1,044		0	G		\$2,500
<b>PG.5</b>										
08280-02	909	Head Start (leased)	174 S. 100 W Fillmore		1,500		0	G		\$5,702
05095-02	910	Head Start (Leased)	190 E Center Kanab		1,500		0	G		\$2,500
08281-02	911	Head Start (Leased)	705 N. 195 W. La Verkin		5,500		0	G		\$6,892
<b>Total: 7</b>					<b>28,510</b>					<b>\$141,796</b>

### **INSURED - CONTENTS (Not in University Owned Buildings)**

[illegible]

## STATUES

STATE BUILDING NUMBER	SUU BLD #	STATUES	LOCATION	YEAR PURCHASED CONST. OR REMODOLED	GROSS SQ. FT.	ORIGINAL COST PLUS REMODELING	CONST CLASS	QTY .	INSURED REPLACEMENT BUILDING VALUE 98-99	INSURED REPLACEMENT CONTENT VALUE 99-00
		Aristotle	Centurian - Campus	1994		\$5,500	O	G	\$25,000	
		Centurium Center Piece	Centurian - Campus	1997		\$21,596	O	G	\$21,596	
		Devinci	Centurian - Campus	1994		\$10,500	O	G	\$25,000	
		Einstein	Centurian - Campus	1994		\$9,000	O	G	\$25,000	
		Galileo	Centurian - Campus	1995		\$10,100	O	G	\$25,000	
		Jefferson	Centurian - Campus	1992		\$12,100	O	G	\$25,000	
		Madame Currie	Centurian - Campus	1995		\$7,550	O	G	\$25,000	
		Madame Distael	Centurian - Campus	1994		\$10,150	O	G	\$25,000	
		John Stewart Mill	Centurian - Campus	1996		\$10,000	O	G	\$25,000	
08285-01	804	Nellie Unthank	Upper-Campus	1985		\$20,000	O	G	\$35,385	
		Newton	Centurian - Campus	1994		\$9,000	O	G	\$25,000	
05826-01	805	Founders Monument	Lower-Campus	1986		\$183,116	O	G	\$202,200	
		Plato	Centurian - Campus	1996		\$10,000	O	G	\$25,000	
		Shakespeare	Centurian - Campus	1994		\$8,750	O	G	\$25,000	
		Sharwan Smith	Sharwan Smith Ctr. Campus	1997		\$28,052	O	G	\$28,052	
		Socrates	Centurian - Campus	1995		\$8,798	O	G	\$25,000	
O8417	806	Star Maker	Upper-Campus	1994		\$30,000	O	G	\$33,363	
<b>TOTAL: 17</b>						<b>\$394,212</b>			<b>\$620,596</b>	

**NOTE: Statues located in the Centurium are insured as Cebturium contents.**

## TOTALS:

TOTAL NUMBER OF UNIVERSITY OWNED BUILDINGS	73
TOTAL NUMBER MISCELLANEOUS STRUCTURES WHICH DO NOT MEET REQUIREMENTS FOR BUILDINGS	13
TOTAL NUMBER OF UNIVERSITY FEDERALLY FUNDED LEASED BUILDINGS	7
TOTAL ORIGIONAL COST PLUS REMODELING - UNIVERSITY OWNED BUILDINGS	\$88,185,641
TOTAL ORIGIONAL COST PLUS REMODELING - UNIVERSITY STRUCTURES	\$867,802
TOTAL GROSS SQ. FT. OF UNIVERSITY OWNED BUILDINGS	1,158,284
TOTAL GROSS SQ. FT. OF UNIVERSITY STRUCTURES	32,645
TOTAL GROSS SQ. FT. OF UNIVERSITY FEDERALLY FUNDED LEASED BUILDINGS	28,510
TOTAL INSURED REPLACEMENT VALUE OF UNIVERSITY OWNED BUILDINGS	\$119,961,058
TOTAL INSURED REPLACEMENT VALUE OF UNIVERSITY OWNED STRUCTURES	\$747,478
<u>TOTAL INSURED REPLACEMENT</u> CONTENT VALUE IN UNIVERSITY OWNED BUILDINGS,STRUCTURES & LEASED BLDs.	\$18,789,872



**OTHER INSURED BUT NOT INCLUDED AS BUILDINGS**

A. ORIGINAL COST PLUS REMODELING FOR STATUES	\$394,212
B. TOTAL INSURED STATUES	\$620,596
C. INSURED VALUE OF CONTENTS IN STORAGE ( Summer Games, Shakespeare) & CONTENTS IN THE ST GEORGE CENTER	\$862,486

**TOTAL UNIVERSITY ACERAGE:**

AREA OF MAIN CAMPUS	116.82
AREA OF FARM LABORATORY	1,032
AREA OF MOUNTAIN PROPERTY	2,502
AREA OF OTHER PROPERTY	177
<b>TOTAL:</b>	<b>3828.48 ACRES</b>

**CONSTRUNCTION CLASS:**

- A Class "A" buildings have fireproof structural steel frames with reinforced concrete masonry floors and roofs
- B Class "B" buildings have reinforced concrete frames and concrete or masonry floors and roofs
- C Class "C" buildings have masonry or concrete walls, and wood or steel roofs and floor structures, except for slabs on grade
- D Class "D" buildings have wood frame, floor, and roof structures. They may have a concrete floor and grade and other substitute materials but are considered combustible construction
- S Class "S" buildings have frames, roofs, and walls of incombustible metal. This includes the pre-engineered metal buildings
- O Class "O" indicates insured items identified as other than A,B,C,D, or S,

**QUALITY**

G-GOOD	P-POOR	E-EXCELLENT
--------	--------	-------------