

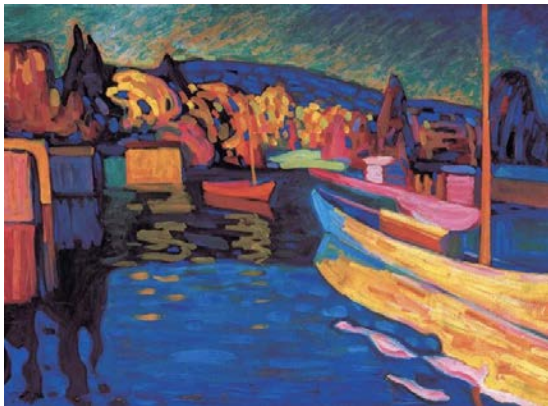
SUMA Family Day

September 12: Stylized Landscapes with Jim Jones and Wassily Kandinsky

Today we will be inspired by the stylized landscapes created by Wassily Kandinsky and realistic landscapes of Southern Utah by Jim Jones. You will create your own landscape painting using bold lines and beautiful colors. Many **realistic** landscapes of Jim Jones are on display in SUMA now. The **stylized** landscape above was created by the Russian painter Wassily Kandinsky.

Materials Needed

- Heavy Paper
- Crayons
- Paint Brush
- Paint
- Water in a Cup
- Paper Towel
- Image of a Southern Utah Landscape



Instructions

STEP ONE Select a reference image of a Southern Utah landscape to use for your drawing. You can use one of Jim Jones's paintings, or a photograph.

STEP TWO Draw the landscape on your paper using a dark crayon. Simplify what you see. Instead of drawing every detail, turn the landforms, plants, sky, and other details into simple shapes. Draw in the shapes in the **foreground**, then the **middle ground**, then the **background**.



STEP THREE When your drawing is complete, choose a bright crayon and trace over your lines to add more interest to the drawing.

STEP FOUR Paint your picture. Since your project is stylized, you don't need to match the colors in your reference image. Instead, try to match the **values**. Make light areas light and dark areas dark.

STEP FIVE Finish your painting by double checking everything. Do you need to make any areas darker? Are you satisfied with your color choices? Sign your work when you are finished.

Definitions

Realistic: artwork that represents something real, and the artist tried to make it look real

Stylized: artwork that represents something real, but does not look realistic, the artist has changed the lines, shape, color or other features

Value: how light or dark something is

Foreground the part of the view that is nearest to the observer

Middle Ground the part of the view in the middle distance

Background the part of the view that is in the back

Make Your Own Paint

Materials

- ½ c baking soda
- ¼ c white vinegar
- 1 tsp sugar
- ¼ c corn starch
- Mixing bowl
- Whisk
- Toothpicks
- Food coloring
- Palette or ice cube tray

STEP ONE Mix the ingredients in this order, stirring between each addition: baking soda, vinegar, sugar, corn starch

STEP TWO Measure the white paint into your paint palette or ice cube tray. One teaspoon per color is plenty.

STEP THREE Add color to your paint. 2 to 4 drops of color is good, the more drops, the darker or more vibrant your paint will be. Experiment with mixing colors to create your own paint colors.



MORE ACTIVITIES
go.suu.edu/sumaathome

STEP FOUR Allow your paint to completely dry. This may mean leaving it overnight.

STEP FIVE Use the paints like watercolor. Wet your brush with water and gently swirl it onto the dry paint to pick up color onto your brush.

STEP FIVE Have fun painting!

Share!

Now that you have created a stylized landscape painting, share a photo of your masterpiece with SUMA so we can share it with the community. Tag us on Instagram @suma_museum, use #SUMAatHome or email us your photo at experiencesuma@suu.edu

SUU SOUTHERN
UTAH
UNIVERSITY

artsFUSION



SUMA
SOUTHERN UTAH MUSEUM of ART



the
BEVERLEY
Taylor Sorenson Center for the Arts