

SCHOLARSHIP
SPOTLIGHTUtah Education
Disadvantaged Fund Grant

These grants are allocated to provide supplemental financial assistance for economically disadvantaged students at Southern Utah University. Priority will be given to full-time, undergraduate, first degree seeking students. Depending on eligibility, the maximum award is \$600. Review of applications will begin one (1) month prior to the commencement of each semester. Awards will be given on a semester basis. You will need to re-apply each semester. Incomplete applications will not be considered.

Requirements:

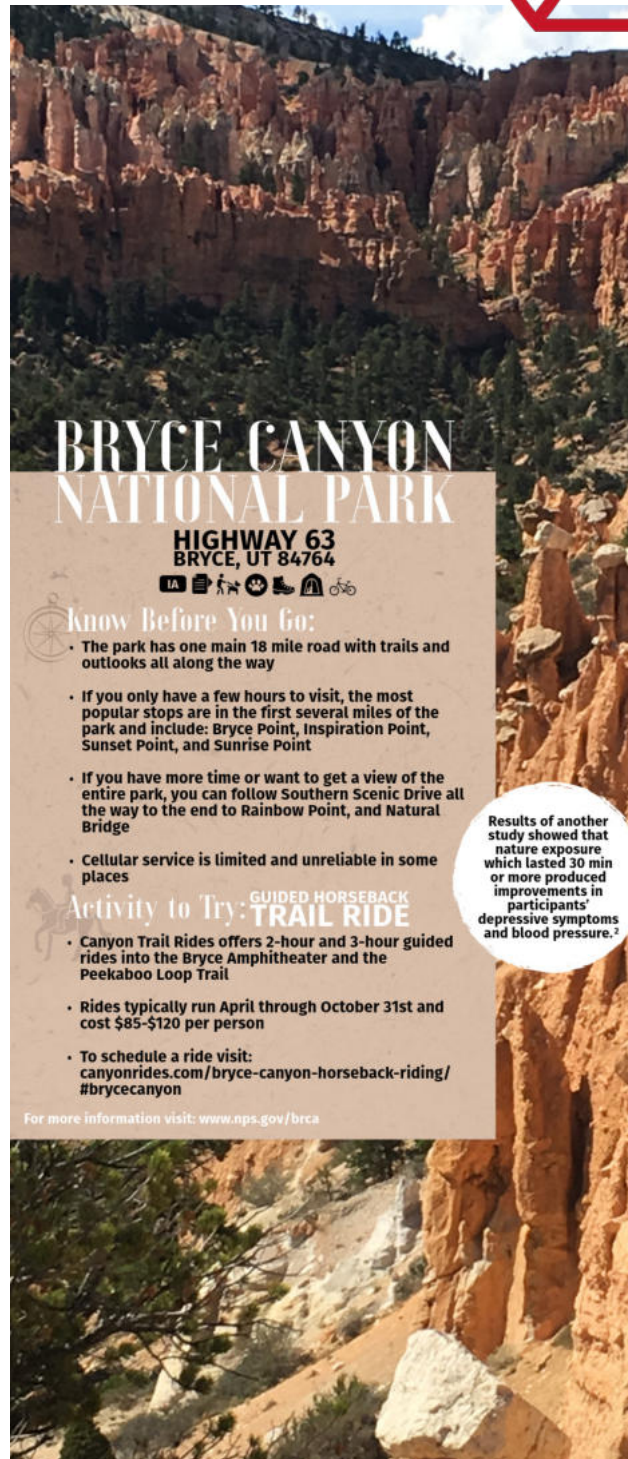
- Must be a Utah resident and a U.S. or naturalized citizen.
- Must be enrolled in courses during the semester you are requesting funds for.
- You cannot be on academic or financial aid probation. Academic and financial aid transcripts will be verified. Preference will be given to full-time students with financial need.
- You must maintain a 2.5 GPA or greater.
- You must have completed the 2024-2025 FAFSA application.
- Undocumented/DACA students may complete the Federal Student Aid Estimator in place of the FAFSA application. If this applies to you, you must include a screenshot of your estimated SAI as part of your application.
- Submit a Personal Statement describing the following **(One page, Double-spaced)**: your academic and/or vocational achievements, personal goals, and any barriers you have overcome to achieve your goals. Please be specific with any financial barriers you have or are currently experiencing. See a template of how to best write your Personal Statement. [See an example of how to best write your Personal Statement.](#)
- Submit a one page thank you letter addressed to the Utah State Legislators **(One page, Double-spaced)**. [See an example of how to best write your Thank You Letter.](#)

FILL OUT THE
APPLICATION
HERE

OR

SCAN FOR
MORE
INFORMATION

GET OUTDOORS

BRYCE CANYON
NATIONAL PARKHIGHWAY 63
BRYCE, UT 84764

Know Before You Go:

- The park has one main 18 mile road with trails and outlooks all along the way
- If you only have a few hours to visit, the most popular stops are in the first several miles of the park and include: Bryce Point, Inspiration Point, Sunset Point, and Sunrise Point
- If you have more time or want to get a view of the entire park, you can follow Southern Scenic Drive all the way to the end to Rainbow Point, and Natural Bridge

- Cellular service is limited and unreliable in some places

Activity to Try: GUIDED HORSEBACK
TRAIL RIDE

- Canyon Trail Rides offers 2-hour and 3-hour guided rides into the Bryce Amphitheater and the Peekaboo Loop Trail
- Rides typically run April through October 31st and cost \$85-\$120 per person
- To schedule a ride visit: canyonrides.com/bryce-canyon-horseback-riding/ #brycecanyon

For more information visit: www.nps.gov/bryce

Results of another study showed that nature exposure which lasted 30 min or more produced improvements in participants' depressive symptoms and blood pressure.²

TRIVIA

What room number is the Veterans Lounge?

The first 5 students to email the correct answer to veterans@suu.edu will be placed in a drawing for a Veterans Center trucker hat!

